

Figure 1: Forest plot of analysis of LTF rs1126478 polymorphism in high dental caries group compared to control group

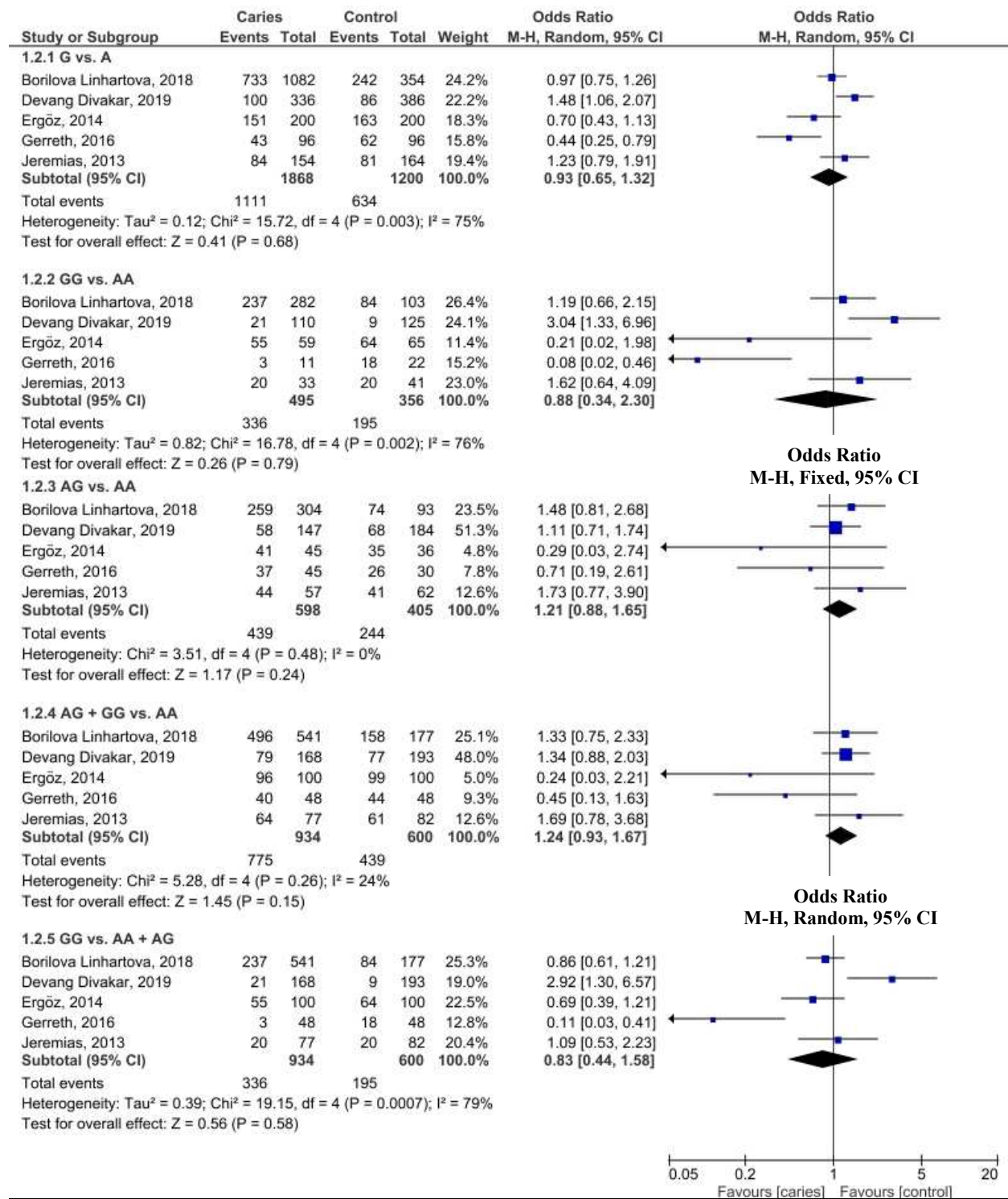


Figure 2: Forest plot of analysis of ENAM rs1264848 polymorphism in high dental caries group compared to control group

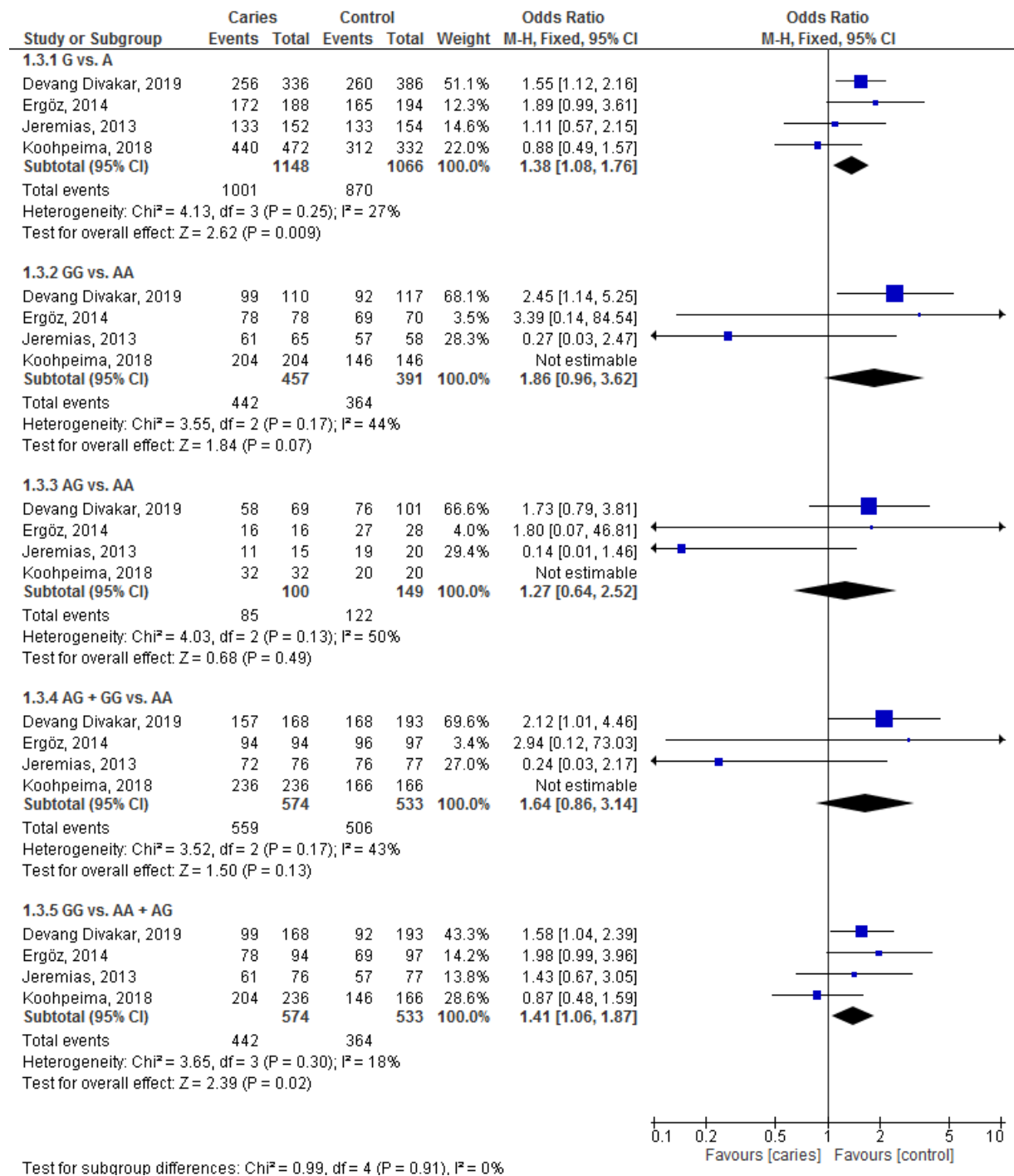


Figure 3: Forest plot of analysis of ENAM rs3796704 polymorphism in high dental caries group compared to control group

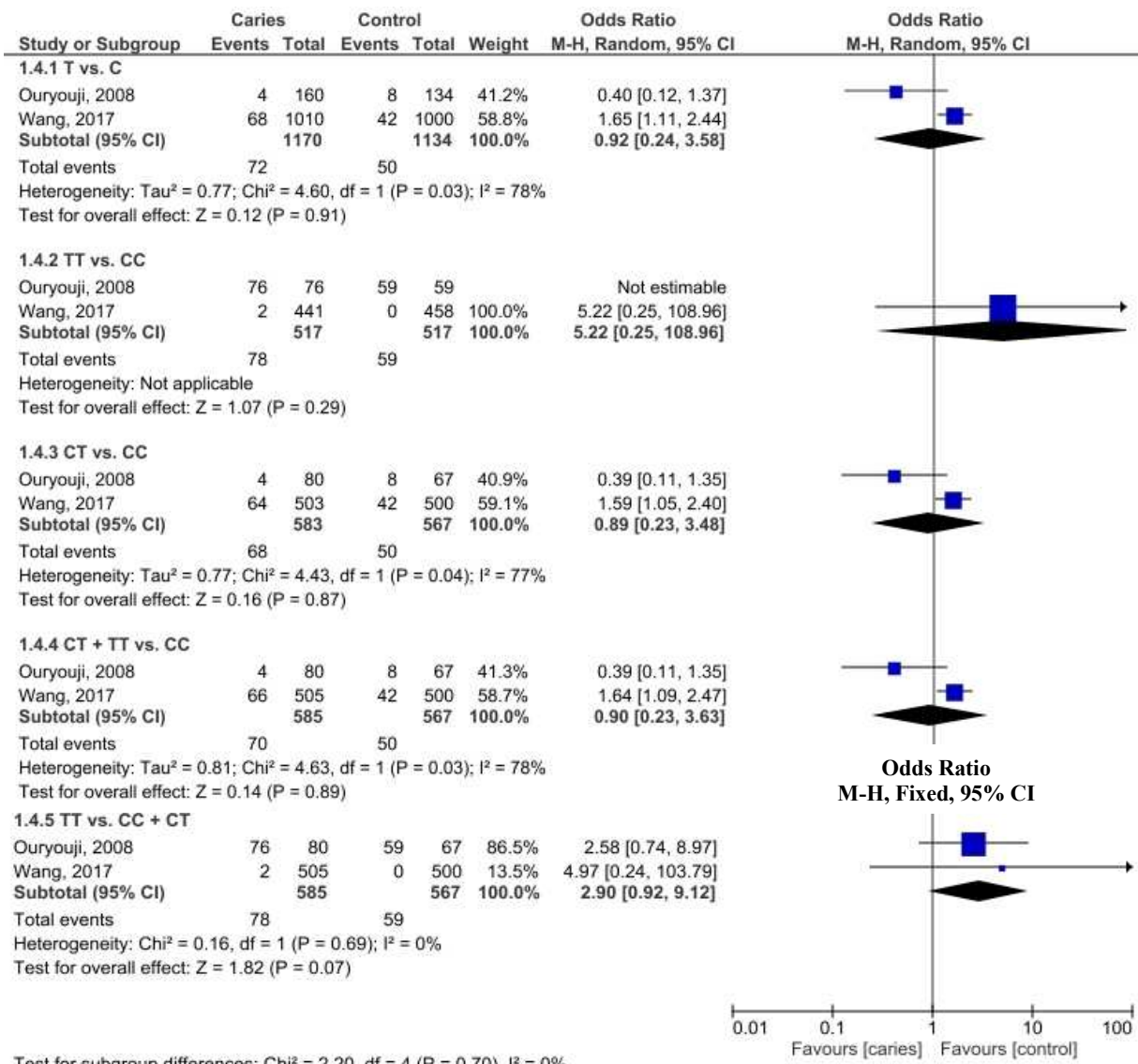


Figure 4: Forest plot of analysis of ENAM rs3796703 polymorphism in high dental caries group compared to control group

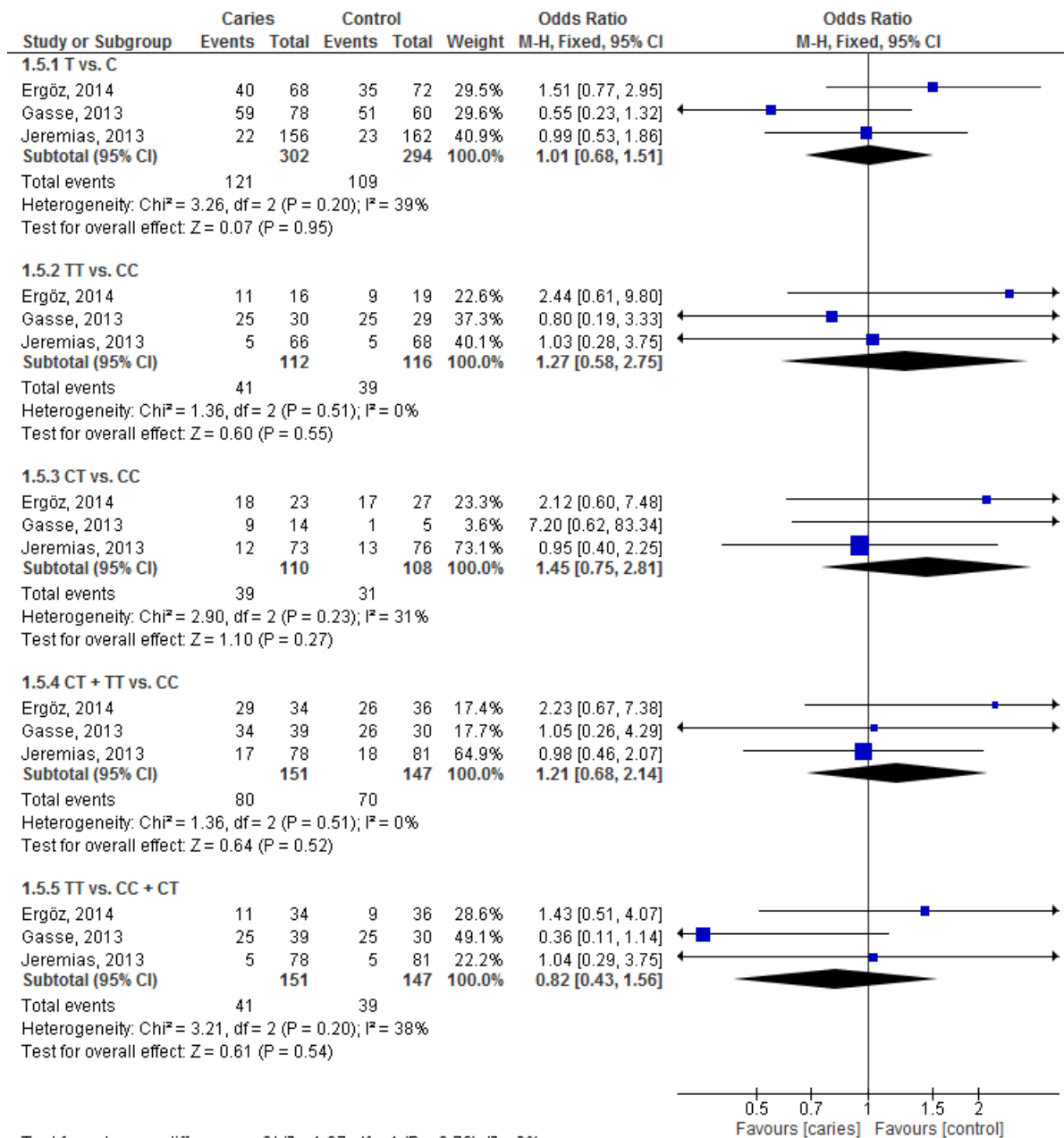


Figure 5: Forest plot of analysis of AMELX rs946252 polymorphism in high dental caries group compared to control group

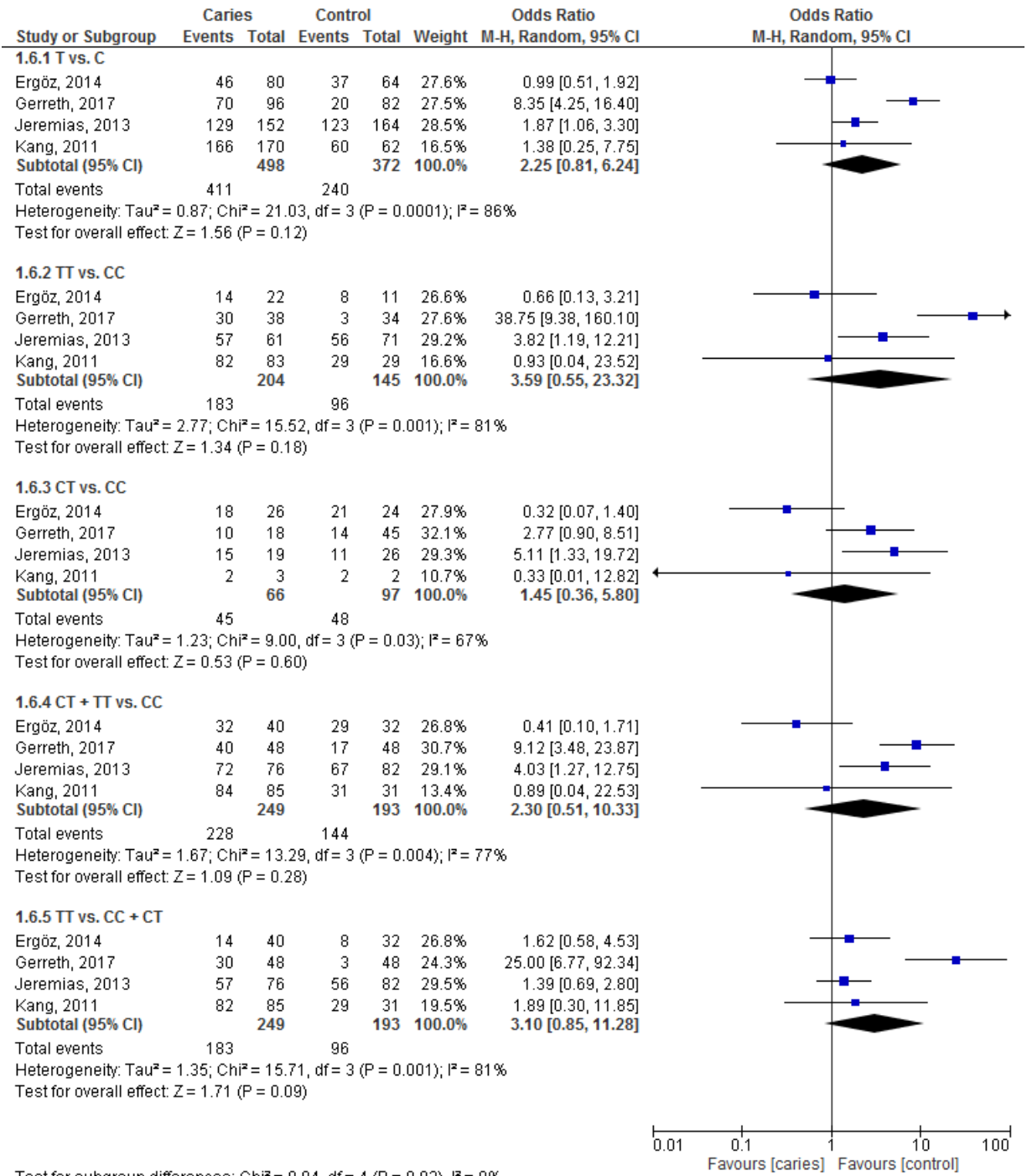


Figure 6: Forest plot of analysis of AMELX rs17878486 polymorphism in high dental caries group compared to control group

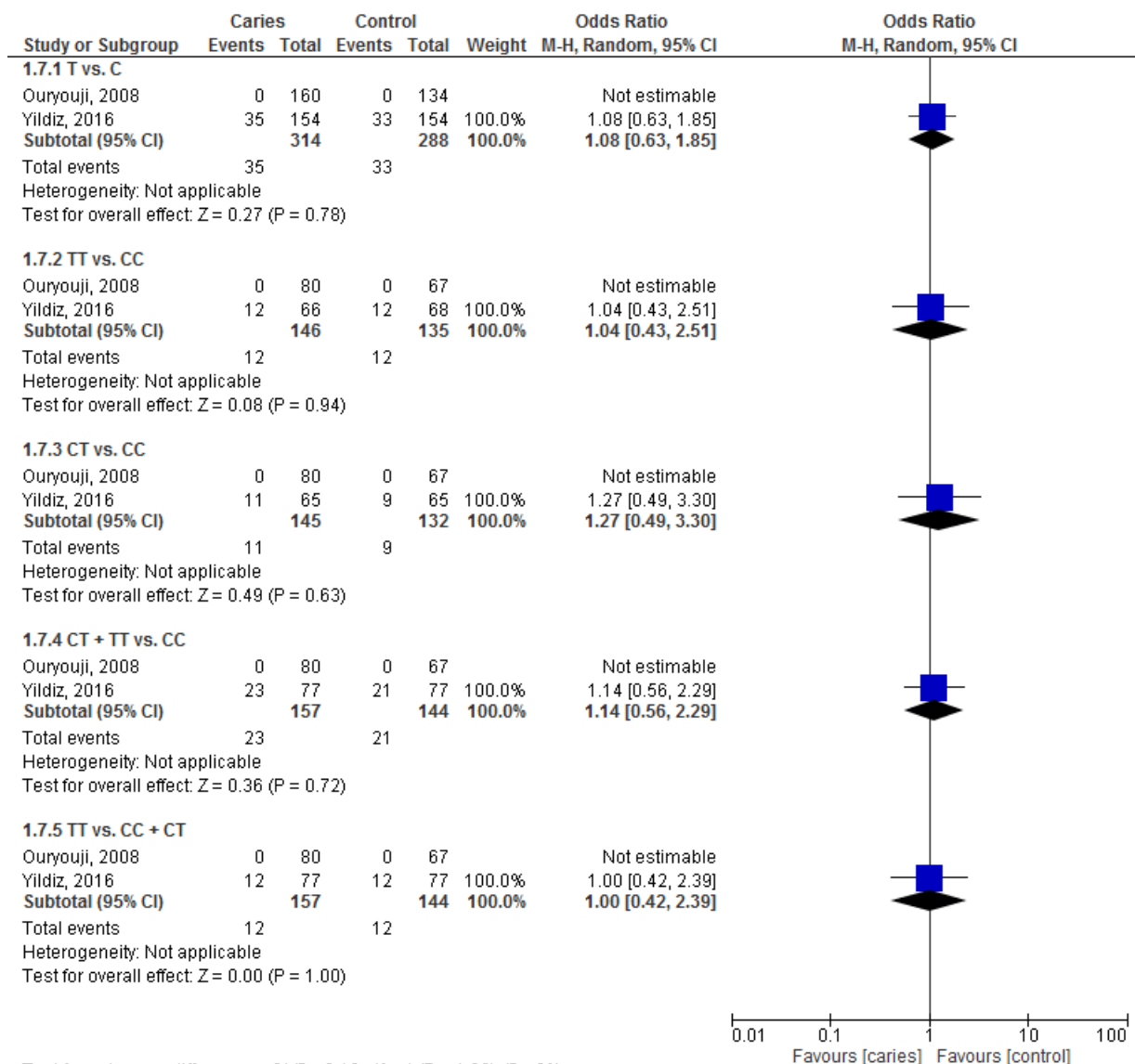


Figure 7: Forest plot of analysis of AMELX rs6639060 polymorphism in high dental caries group compared to control group

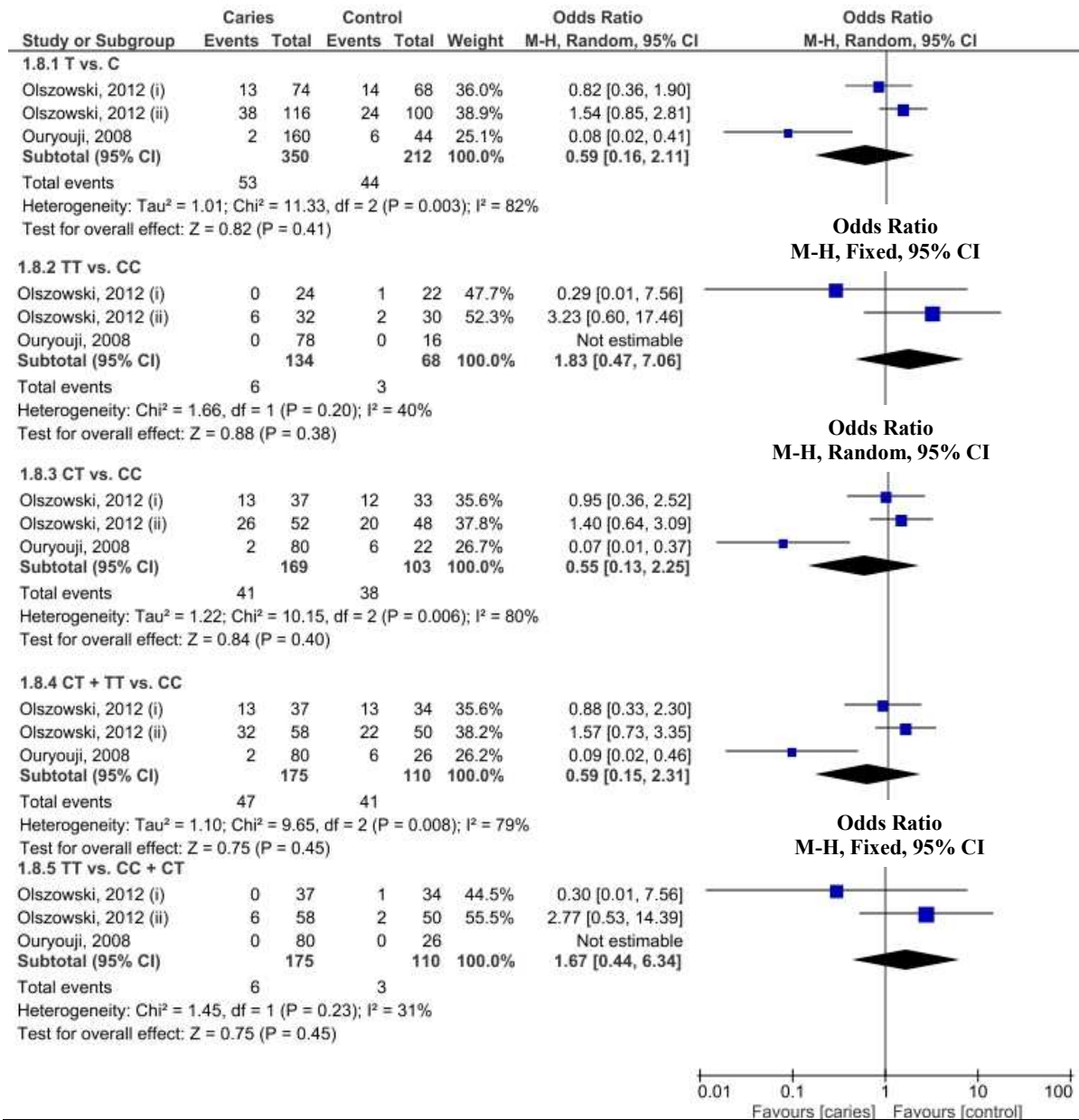


Figure 8: Forest plot of analysis of AMELX rs2106416 polymorphism in high dental caries group compared to control group