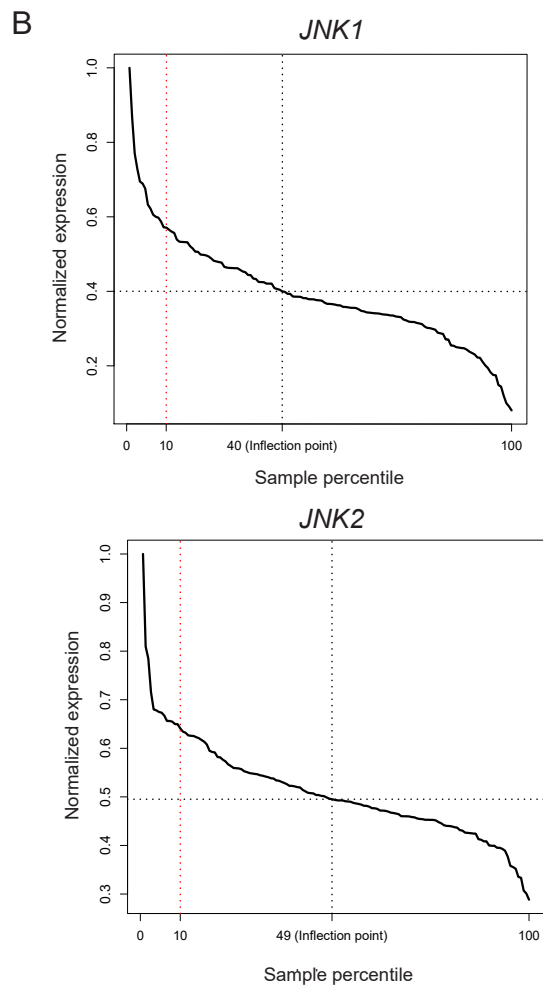
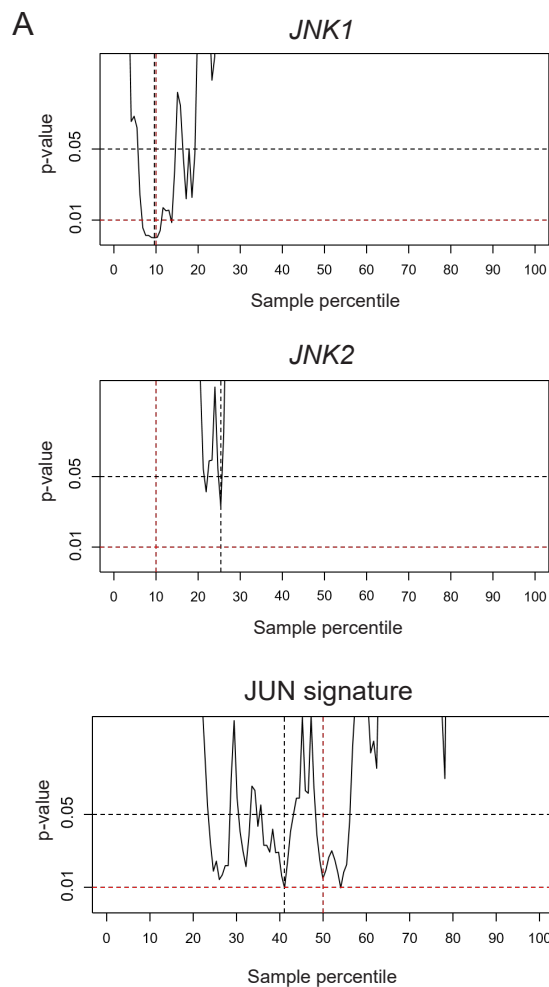
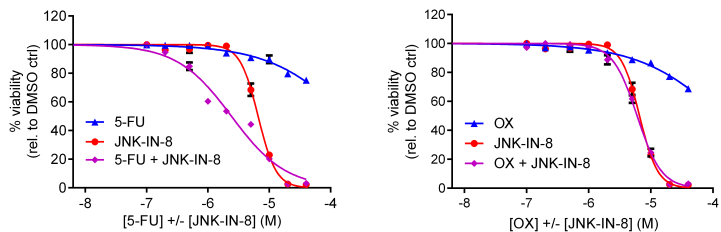


**Supplemental Table 1.** Calculated IC<sub>50</sub> doses and combination index (CI) values for constant ratio dose combinations of FOLFOX and JNK-IN-8 in four PDAC cell lines as determined by CompuSyn software (45) (n=3).

Cell line	Drug/Combo	Calculated IC50 (µM)	CI at 1 µM	CI at 10 µM
P411-T1	JNK-IN-8	58.9	-	-
	FOLFOX	61.9	-	-
	COMBO 10:1:5	5.79	0.41	0.070
	COMBO 10:1:10	5.25	0.13	0.074
CFPAC-1	JNK-IN-8	47.7	-	-
	FOLFOX	13.7	-	-
	COMBO 10:1:5	2.30	0.077	0.043
	COMBO 10:1:10	2.25	0.038	0.031
P422-T1	JNK-IN-8	111	-	-
	FOLFOX	31800	-	-
	COMBO 10:1:5	17.4	0.037	0.085
	COMBO 10:1:10	16.2	0.046	0.15
MIA PaCa-2	JNK-IN-8	8.06	-	-
	FOLFOX	10.7	-	-
	COMBO 10:1:5	18.0	7.9	0.47
	COMBO 10:1:10	7.42	6.2	0.12

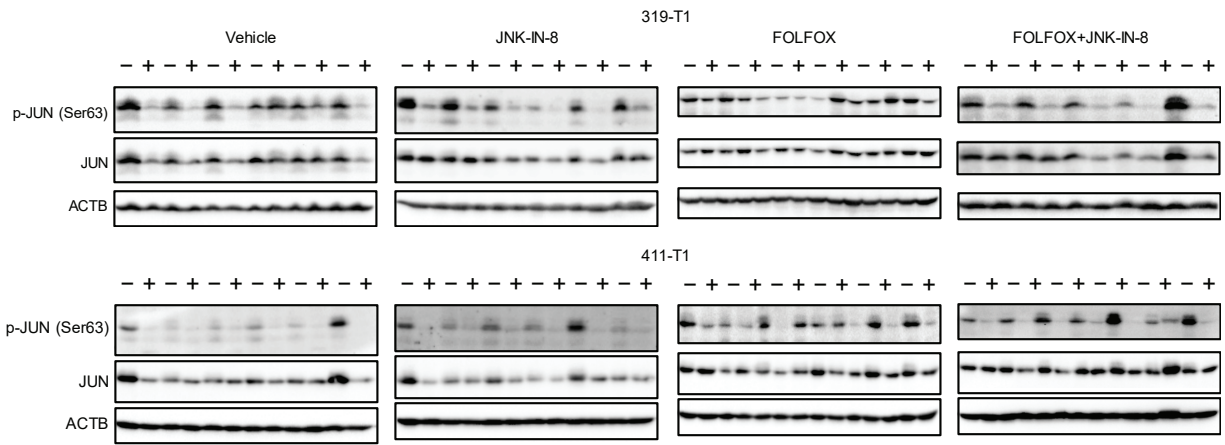


**Supplemental Figure 1. p-value profiles and expression distributions for survival analyses.** (A) p-value profiles for survival analyses for *JNK1* (top), *JNK2* (middle), and the JUN signature (bottom) as described for Figure 2. Samples were ordered by expression (*JNK1* or *JNK2*) or by mean ranked expression (JUN signature). Survival analysis for each possible binary classification of samples into high and low expressing groups and associated p-values were plotted. Horizontal dashed lines show p-values of 0.01 and 0.05. Vertical dashed lines show the minimum p-value sample cut-off as well as the top 10% (*JNK1* and *JNK2*) or median expression (JUN signature). (B) Normalized expression distribution for *JNK1* (top) and *JNK2* (bottom). Dotted vertical lines show potential cut-offs at the 10th percentile and at the geometric inflection point for each expression curve.



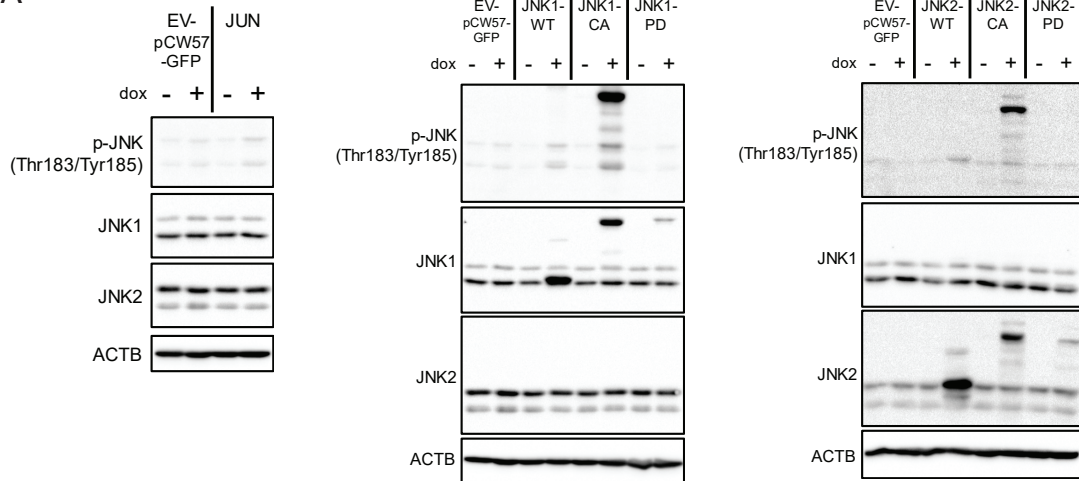
**Supplemental Figure 2. Dose-response data for JNK-IN-8 with 5-FU (left) or OX (right) in P411-T1 PDX-CL.** Dose-response curves for JNK-IN-8 (red), 5-FU or OX alone (blue), and constant ratio combinations (purple), shown as mean $\pm$ SEM normalized % viability (n=2).



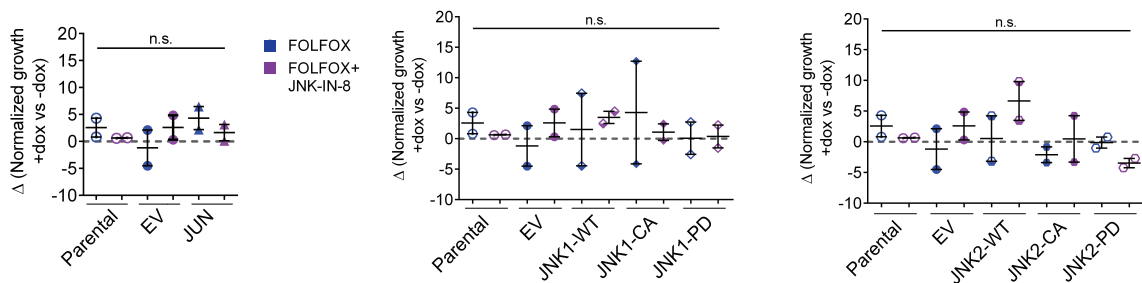


**Supplemental Figure 4. Immunoblot images from in vivo tumor studies.** (A) Immunoblots in matched 319-T1 (top) and 411-T1 (bottom) PDX tumors before (-) and after (+) respective 28 d treatments. All tumors were harvested 4 h after final treatment. ACTB used as loading control.

A



B



**Supplemental Figure 5. Additional data for cell lines with dox inducible expression of JUN, JNK1, and JNK2.** (A) Immunoblots after inducible expression of JUN (left), JNK1 (middle), and JNK2 (right) in lentiviral-infected CFPAC-1 cells. ACTB used as loading control. (B) Effects of overexpression on sensitivity to FOLFOX and FOLFOX+JNK-IN-8 in MIA PaCa-2 cells overexpressing JUN (left), JNK1 (middle), and JNK2 (right) transgenes (n=2).