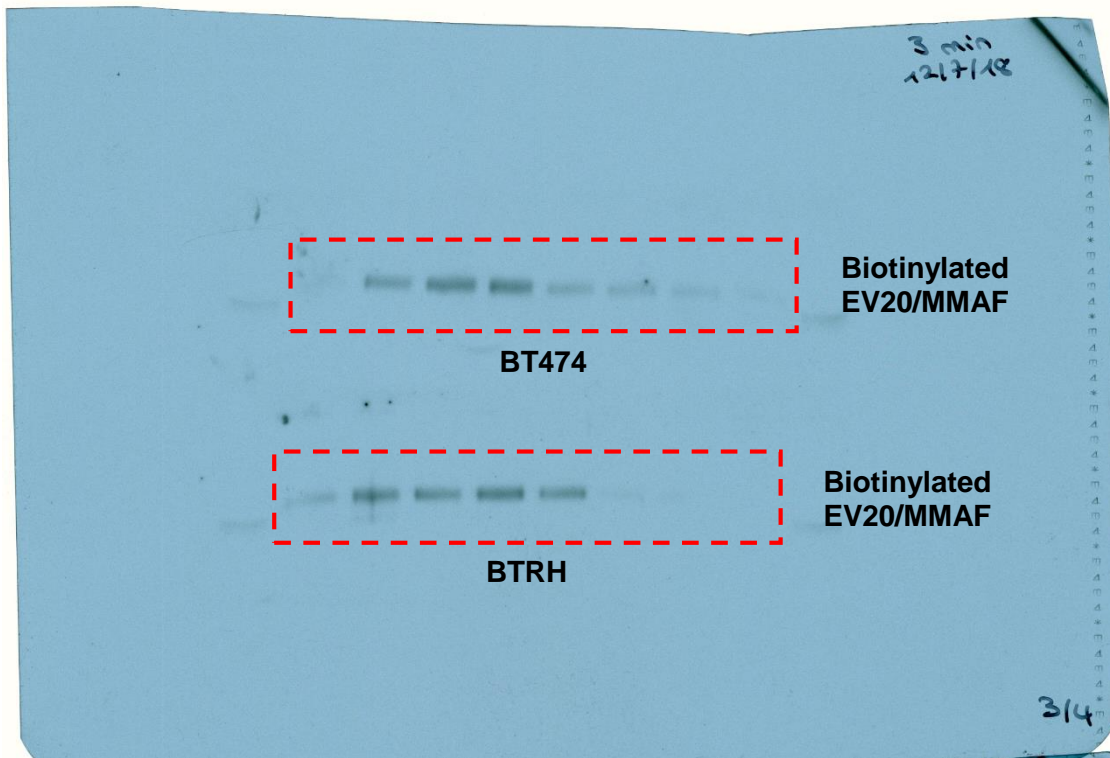


Figure 3B



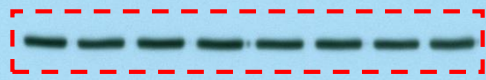
131718

C 15' 30' 1h 3h 6h 9h 24h

Calnexina

1. Bacterias BSA.
2. Acido clorídrico 1:10.000 (pH 4.08)
3. De 20 µl de extracto 5 µl 1:10.000

80 kDa

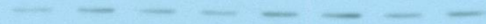


BT474

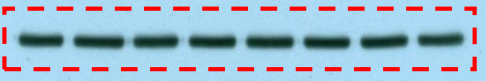
BT

Calnexin

GAPDH



Calnexin

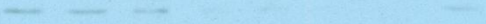


BTRH

RH

Calnexin

GAPDH

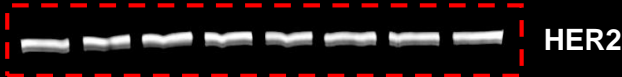


- Cel 8% , 14 pelillos
- Tto 1h a 40C con EUCALMATAF 10mM ba tñilado.
- 25 µg de extracto

Figure 3E



StartBright 520 channel → HER2

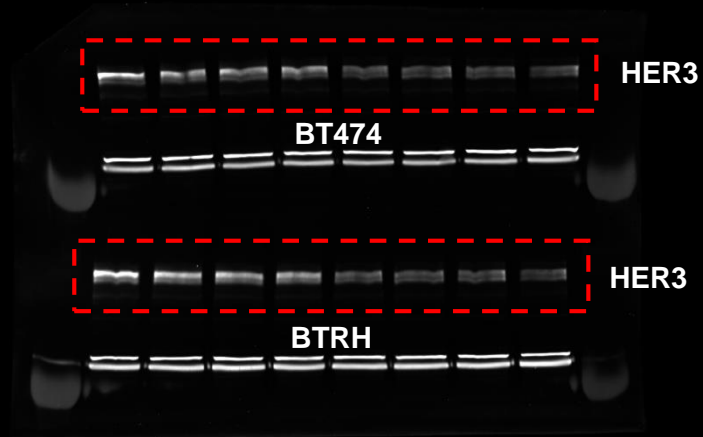


BT474



BTRH

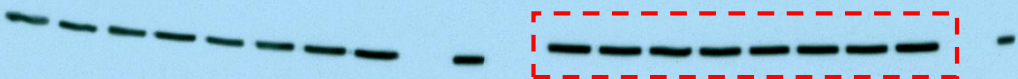
StartBright 700 channel → HER3



H2 BT

H3 BT

5/15/19



BT474

Calnexin

H2 RH

H3 RH



BTRH

Calnexin

Calnexin

(de los genes indicados arriba)