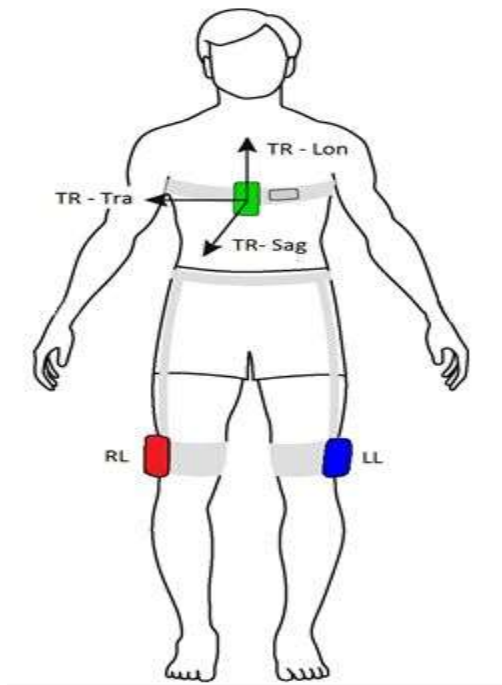


**Supplementary Figure 1.** Negative circle of physical deconditioning. Disease can lead to impaired functional outcome and low physical activity, with subsequent low physical fitness. In turn, physical deconditioning can lead to further inactivity and increase the potential for disability. a-SAH: aneurysmal subarachnoid haemorrhage.



**Supplementary Figure 2.** Placement of the VitaMove activity monitor. Abbreviations: TR= Trunk sensor; RL= Right leg sensor; LL= Left leg sensor; Lon= longitudinal axis; Sag= sagittal axis; Tra= transversal axis.