

OMTO, Volume 17

Supplemental Information

**LunX-CAR T Cells as a Targeted Therapy
for Non-Small Cell Lung Cancer**

Ziming Hu, Xiaohu Zheng, Defeng Jiao, Yonggang Zhou, Rui Sun, Baolong Wang, Zhigang Tian, and Haiming Wei

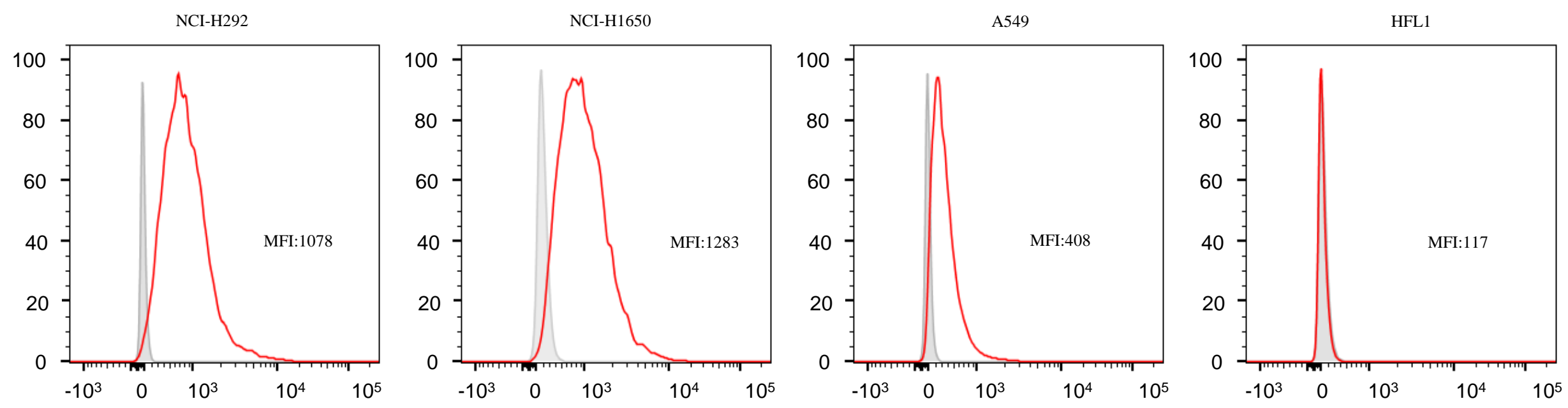


Figure S1. Flow cytometric staining for LUNX (anti-LUNX, S-35-8) on cell membranes of NCI-H292, NCI-H1650, A549, and HFL1 cells (no perforation).

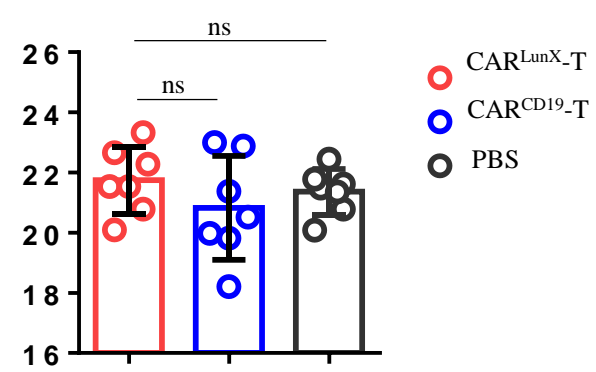


Figure S2. Statistical analyses of the body weight of mice from CAR^{LunX} T cell, CAR^{CD19} T cell, and PBS treatment groups. *P* values were obtained using one-way ANOVA followed by Tukey's multiple-comparisons test.

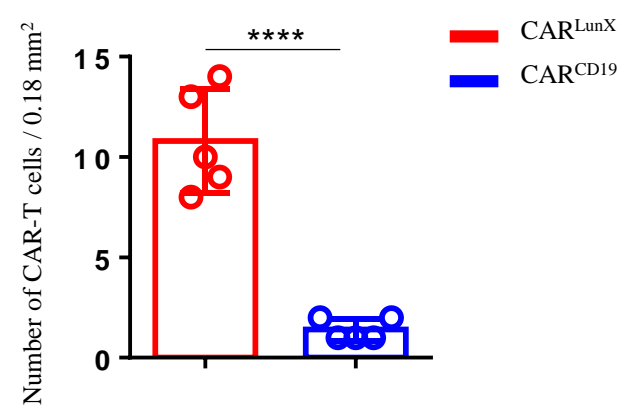


Figure S3. Statistical analysis of numbers of infiltrating CAR-T cells in immunofluorescence images of A549 metastasis xenografted mice model. Each dot represents the 0.18mm² area of sample.

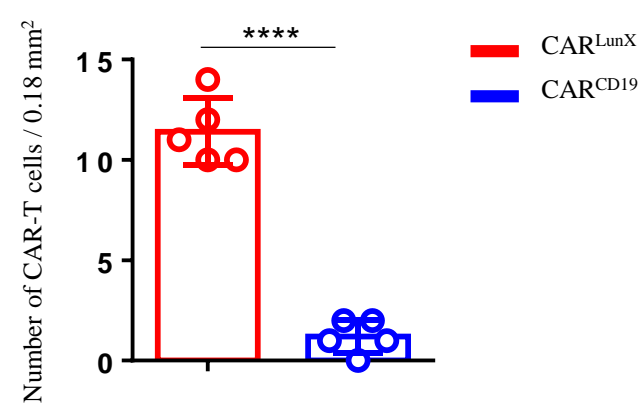


Figure S4. Statistical analysis of numbers of infiltrating CAR-T cells in immunofluorescence images of PDX mice model. Each dot represents the 0.18mm² area of sample.