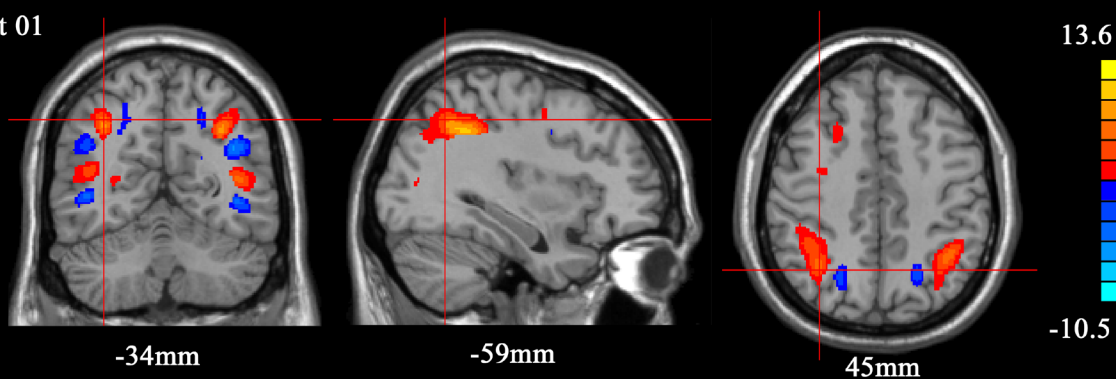
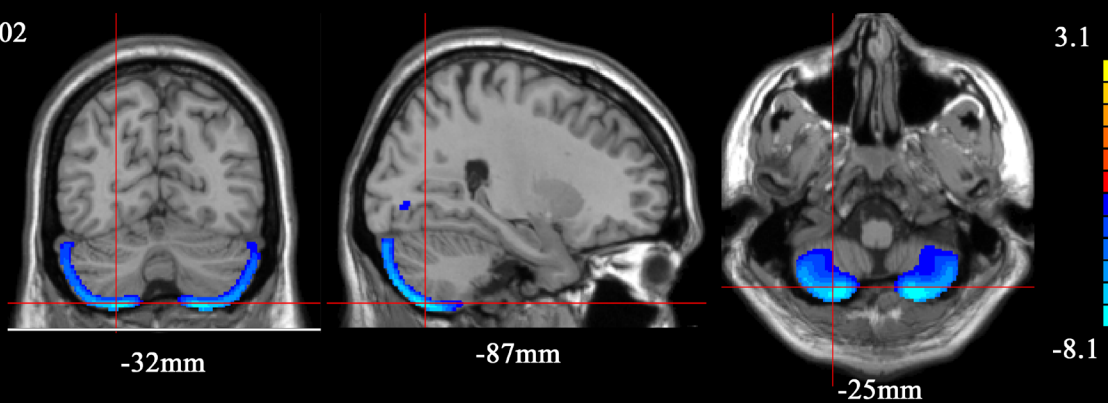


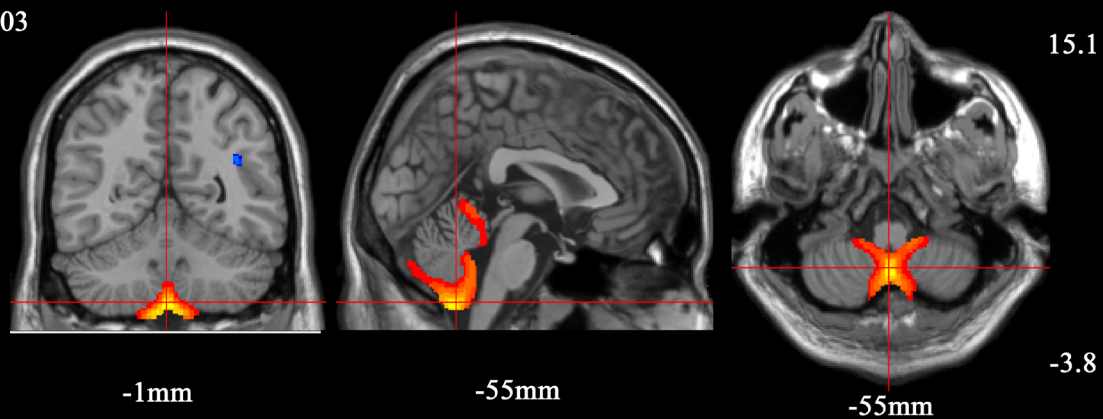
Component 01



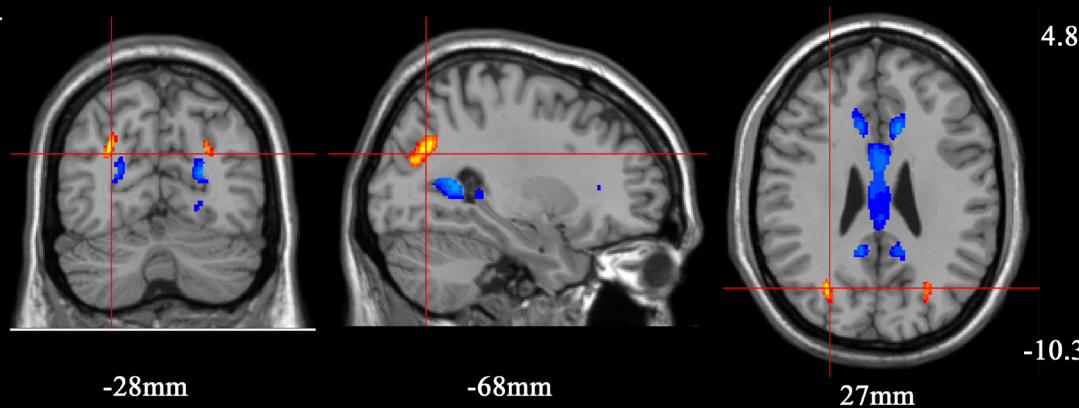
Component 02



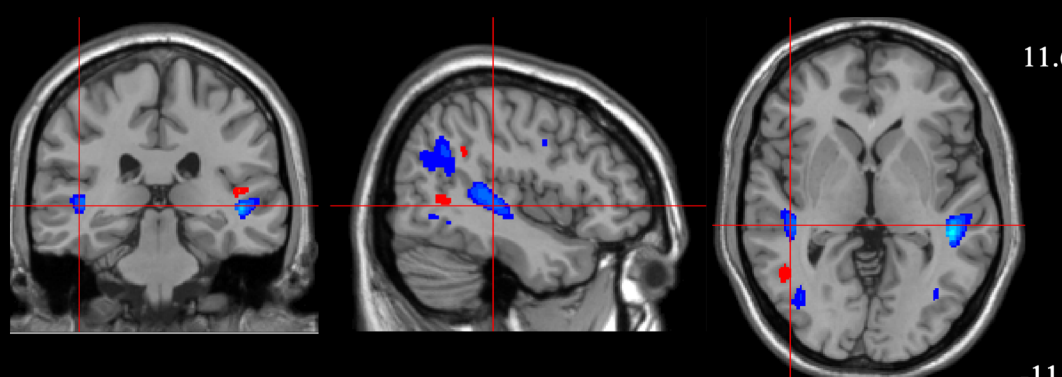
Component 03



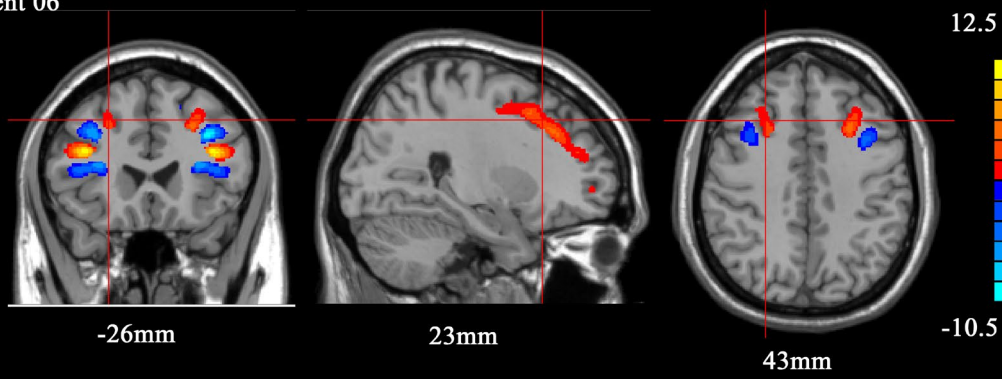
Component 04



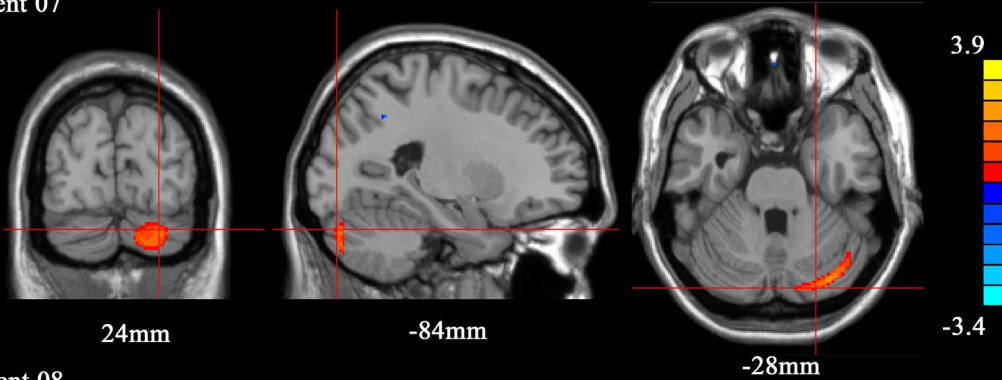
Component 05



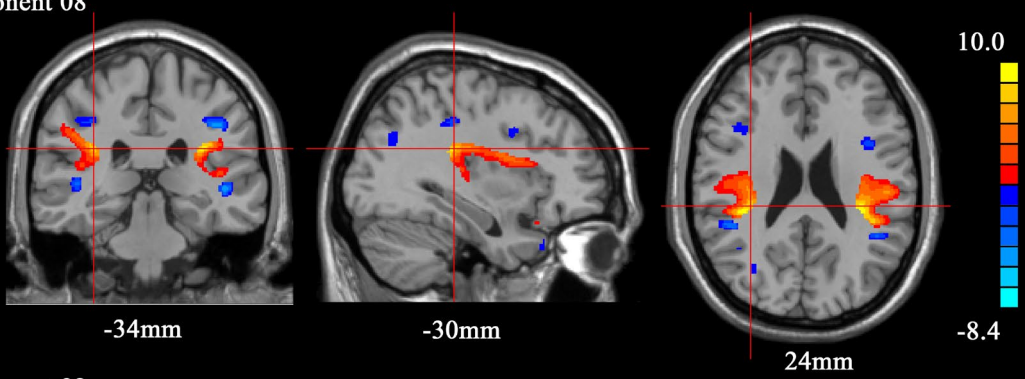
Component 06



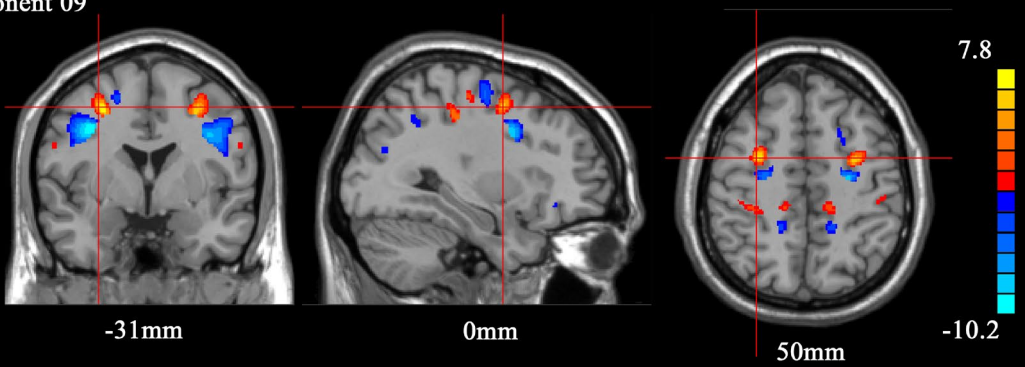
Component 07



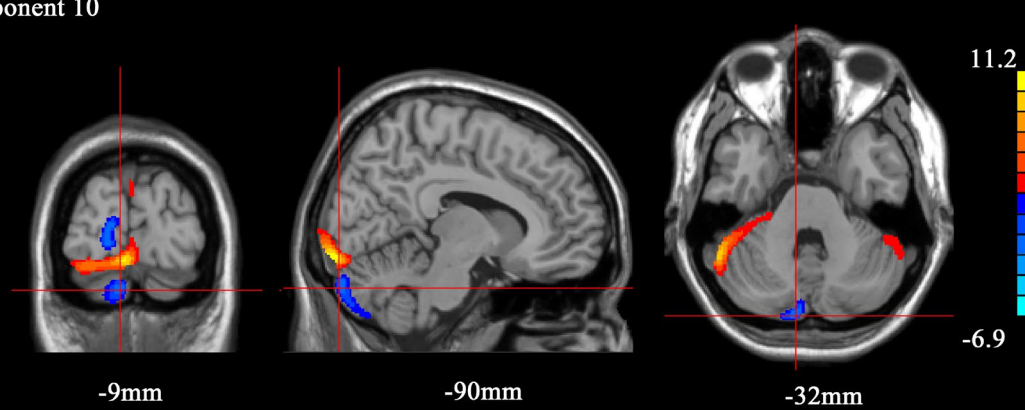
Component 08

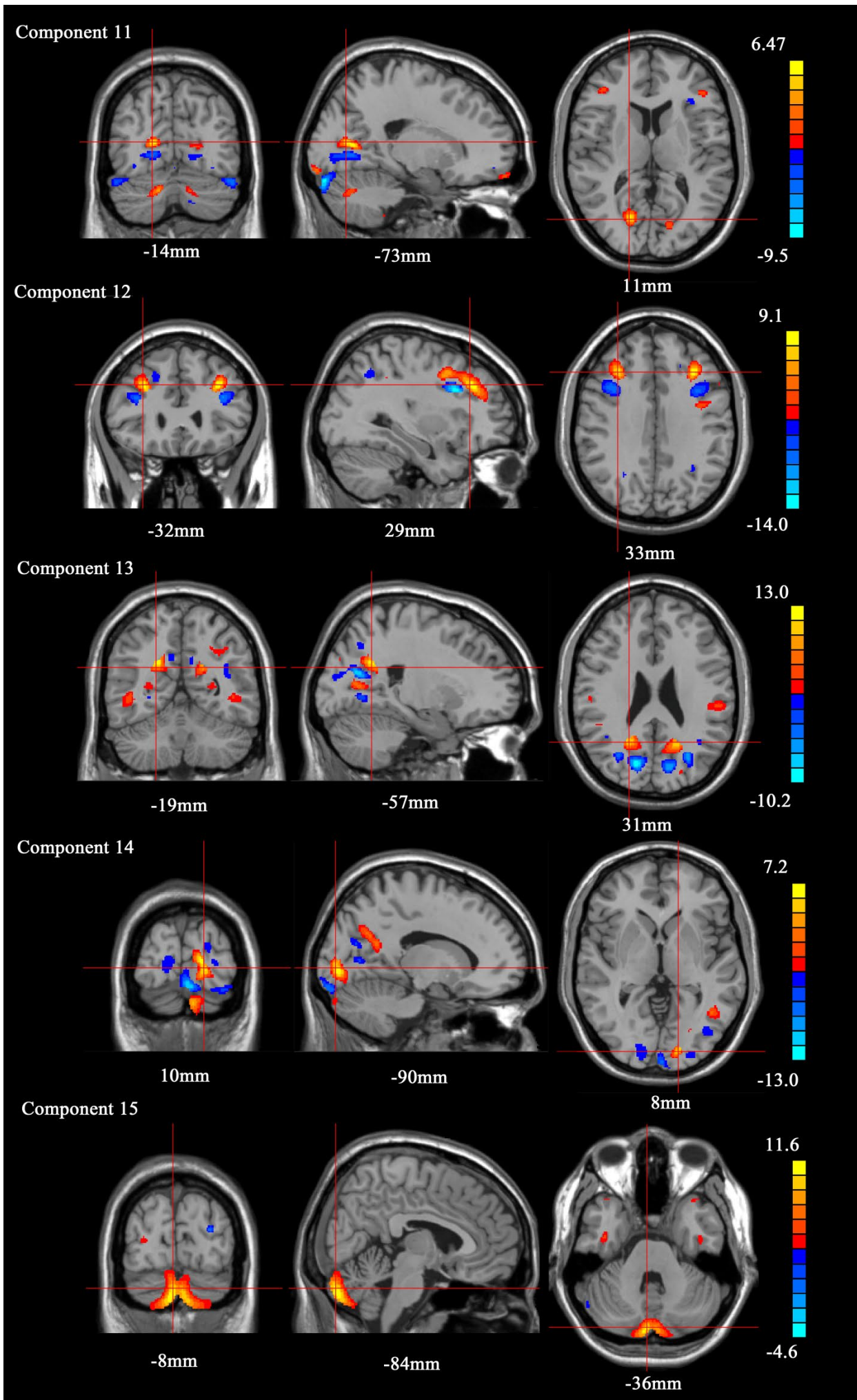


Component 09

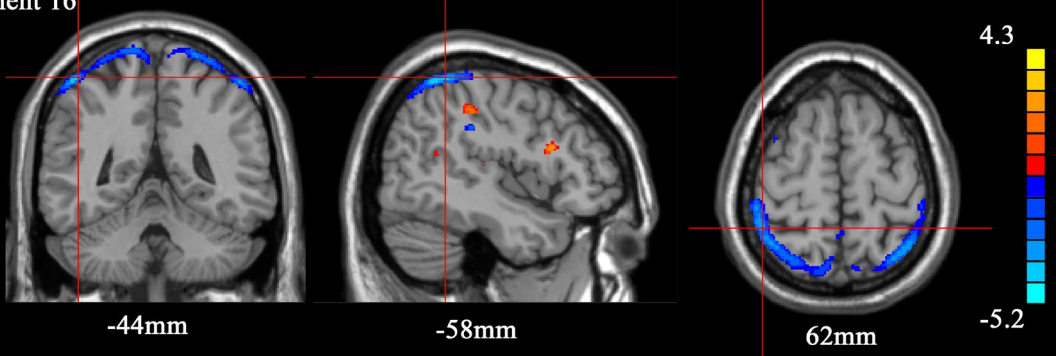


Component 10

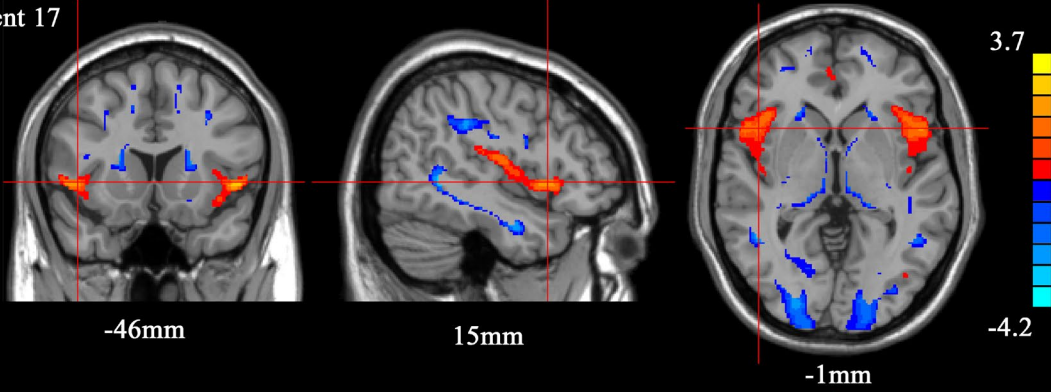




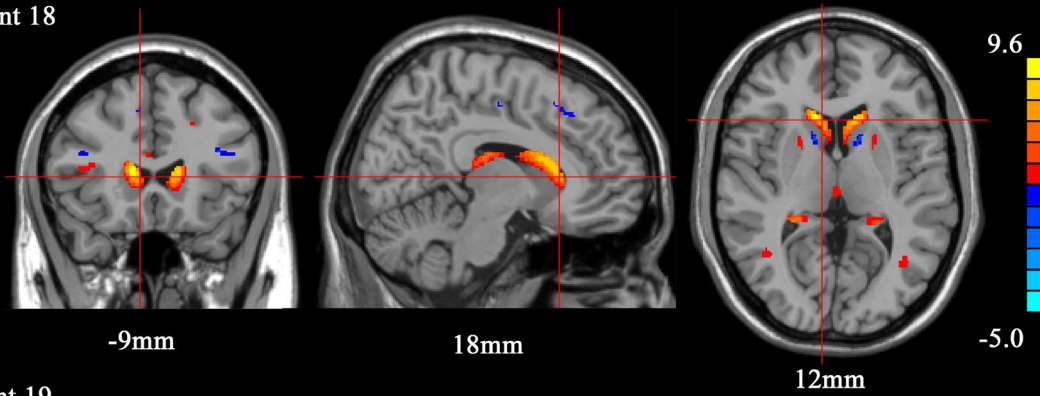
Component 16



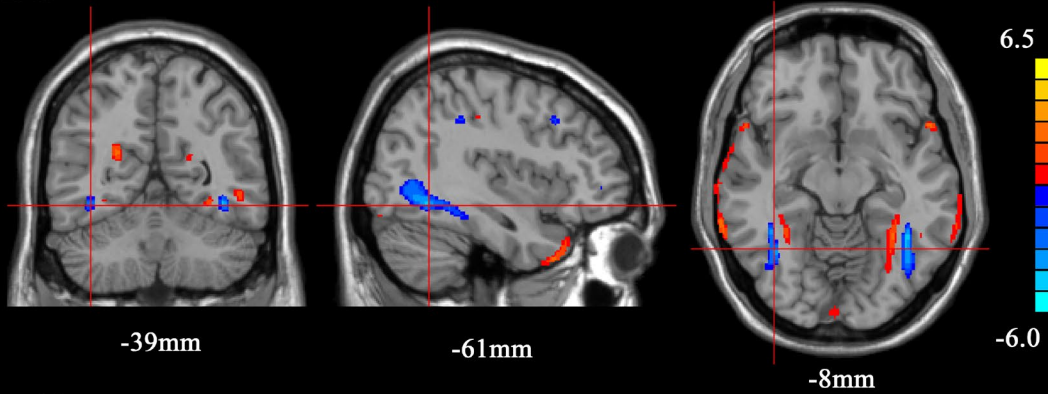
Component 17



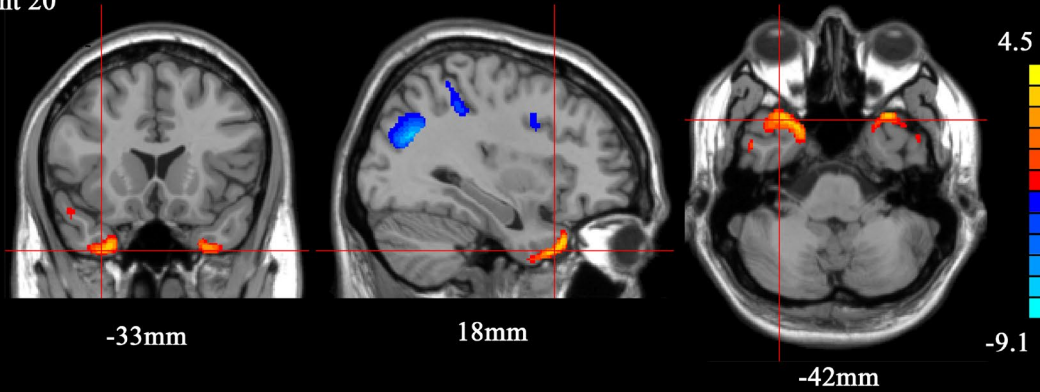
Component 18



Component 19



Component 20



Supplemental figure 1. The T1 images were decomposed into 20 stable components (all set to Z score > 2), and in the main text component A was component 10 while component B was component 17.