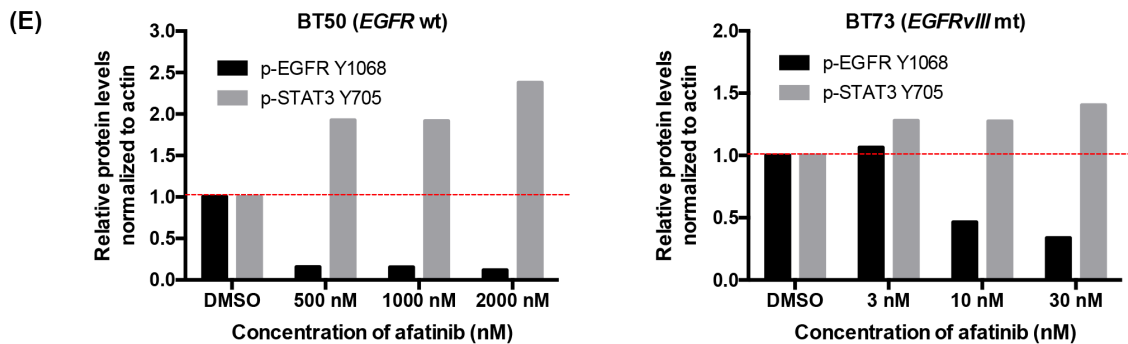
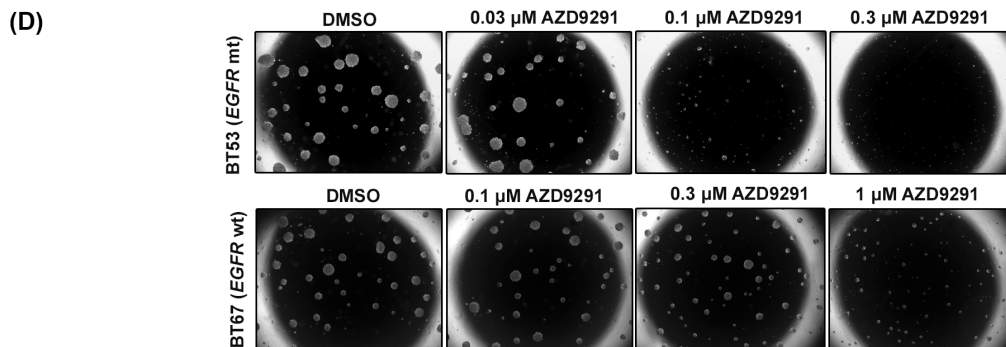
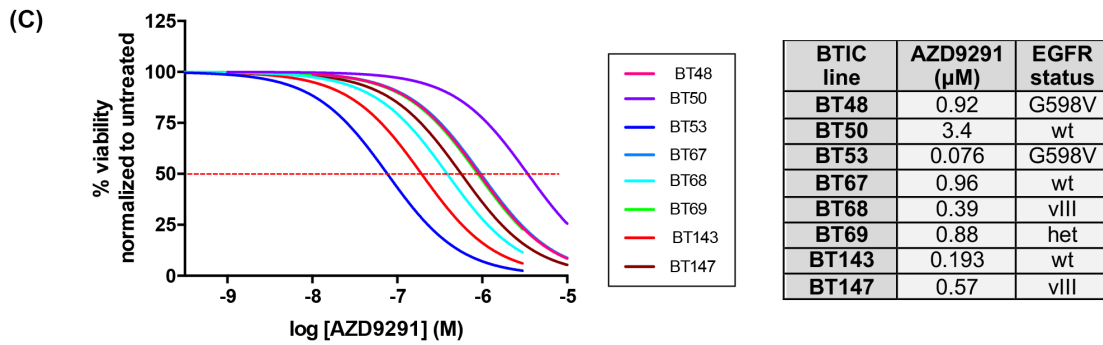
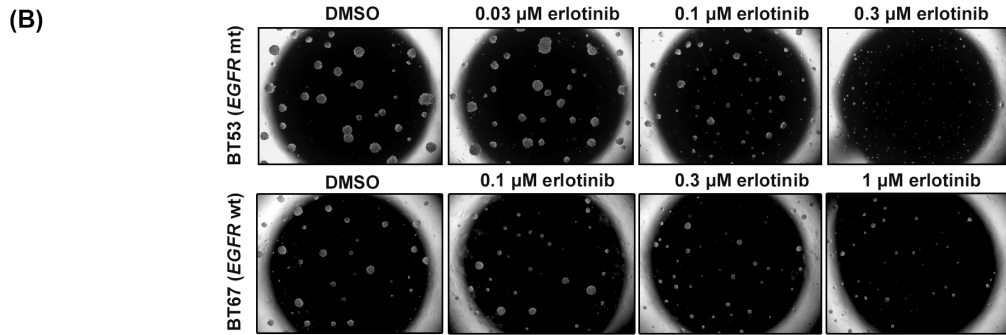
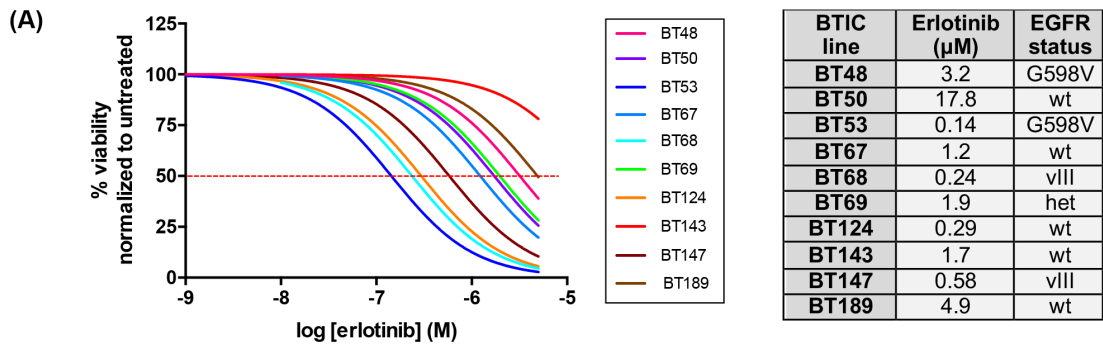
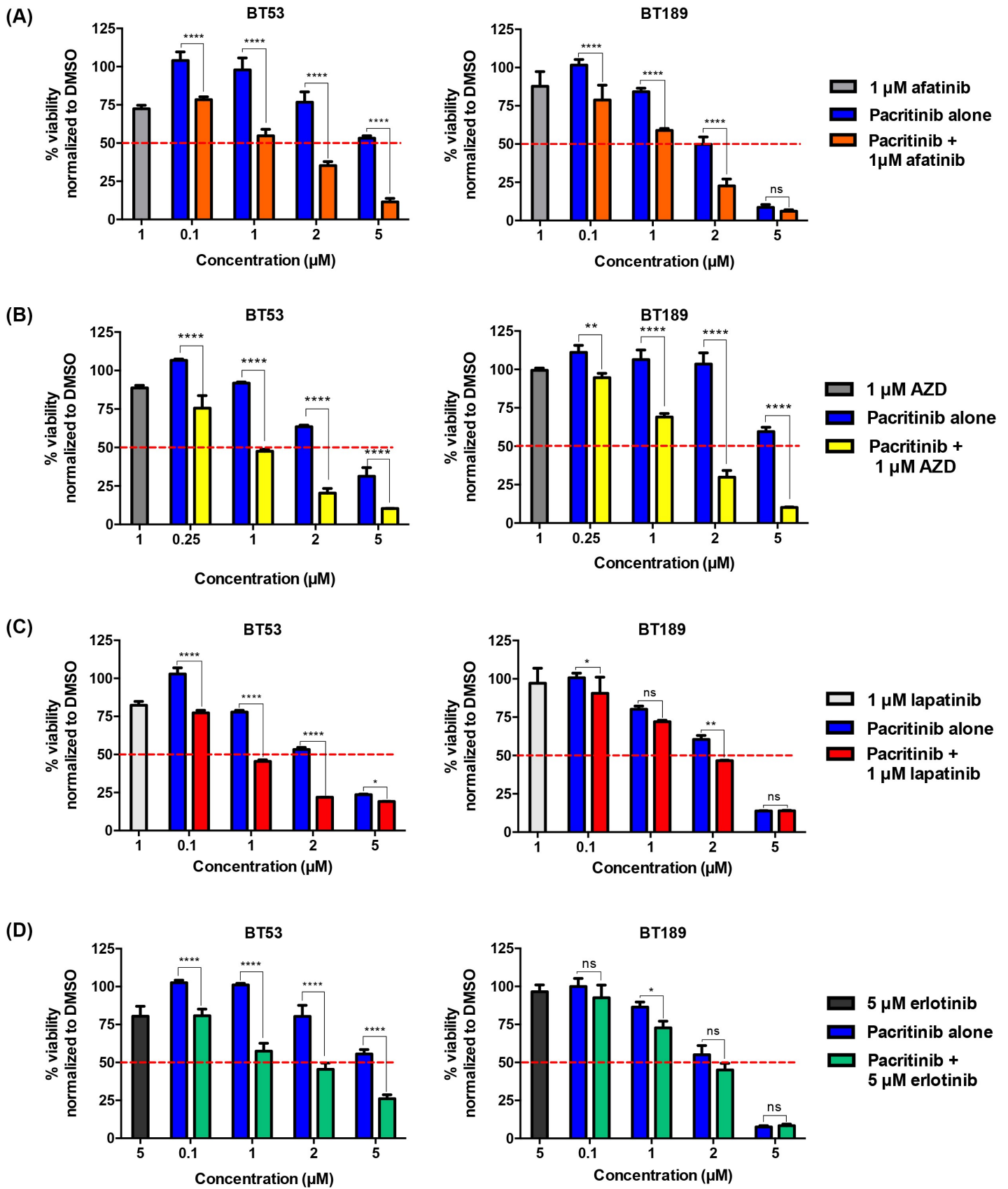


**Supplemental Table 1:** Identification of a diverse panel of GBM BTICs representative of the different mutational statuses of GBM patients.

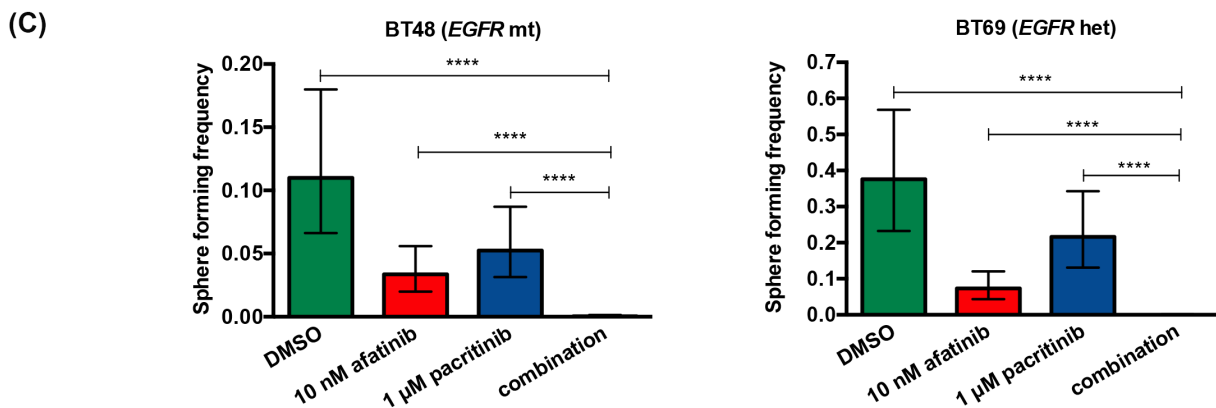
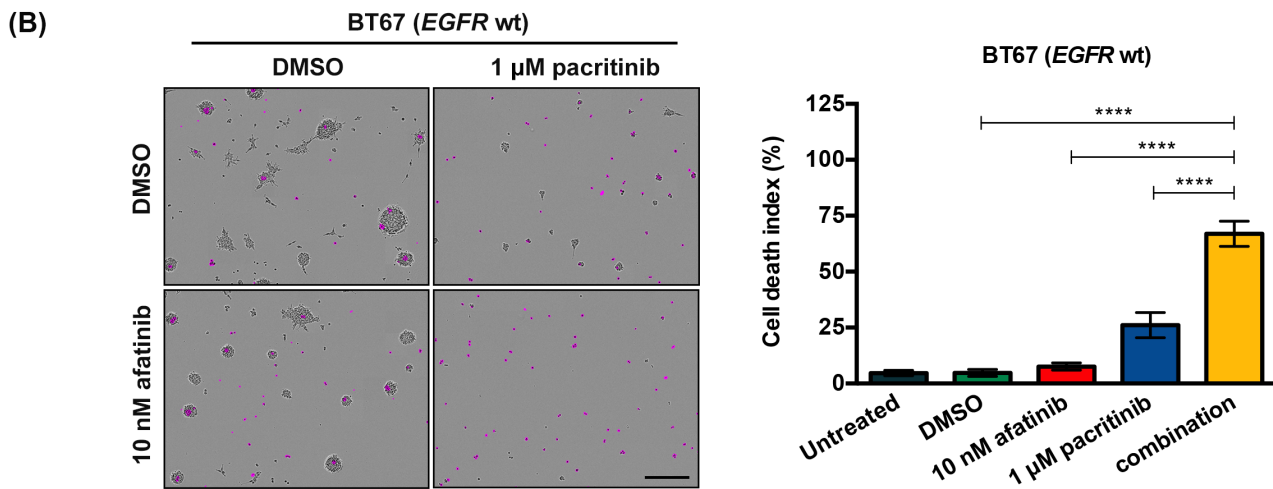
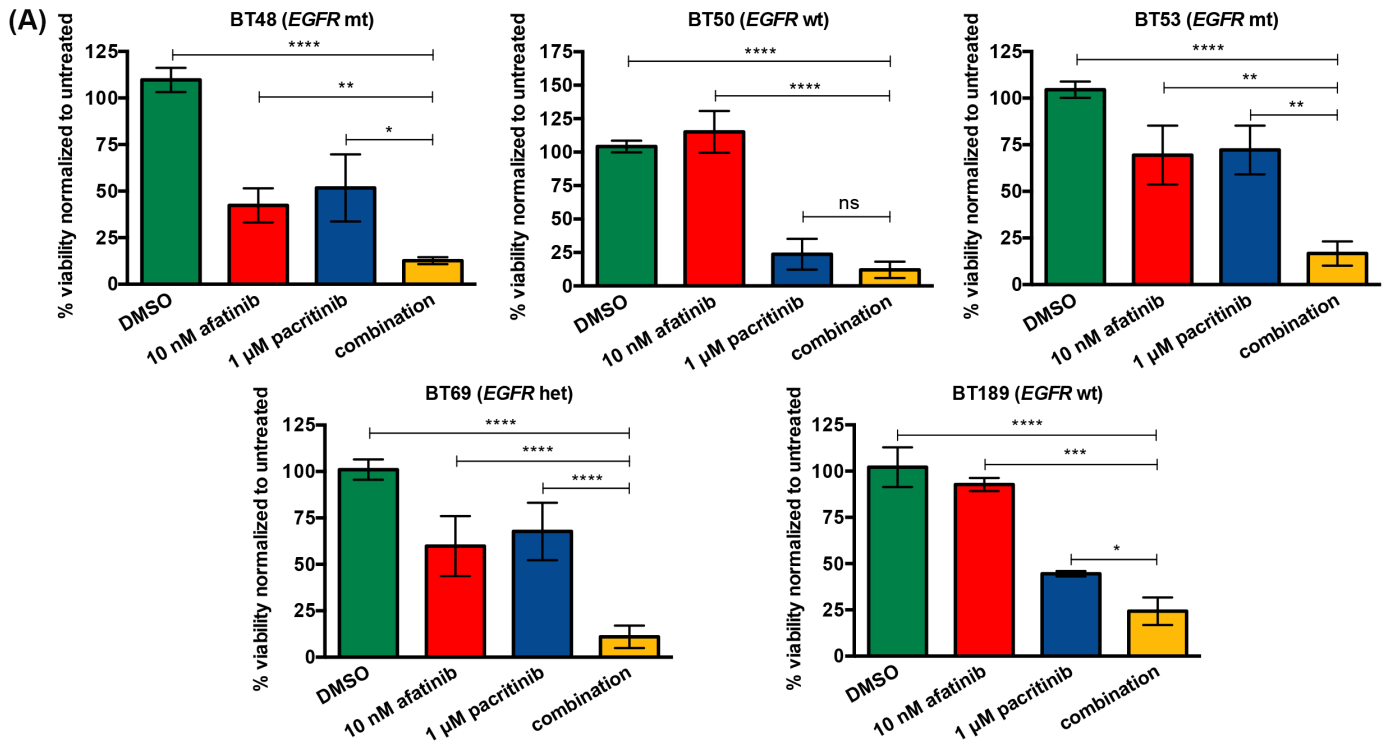
<b>BTIC Line</b>	<b>Diagnosis</b>	<b>Age</b>	<b>Sex</b>	<b>MGMT status</b>	<b>EGFR status</b>	<b>P53 status</b>	<b>PTEN status</b>	<b>IDH1 status</b>	<b>NF1 status</b>	<b>CDKN2A status</b>
<b>BT12</b>	GBM-r	59	M	U	wt	wt	mut	wt	N/A	N/A
<b>BT48</b>	GBM	68	M	M	mut	wt	mut	wt	wt	homo del
<b>BT50</b>	GBM	61	M	M	wt	wt	mut	wt	wt	homo del
<b>BT53</b>	GBM	59	M	M	mut	mut	wt	wt	wt	homo del
<b>BT67</b>	GBM	44	M	M	wt	wt	mut	wt	mut/het del	homo del
<b>BT68</b>	GBM	59	M	U	vIII	wt	wt	wt	N/A	N/A
<b>BT69</b>	GBM	50	M	U/M	het	mut	mut	wt	N/A	homo del
<b>BT73</b>	GBM	52	M	M	vIII	mut	mut	wt	N/A	homo del
<b>BT124</b>	GBM	N/A	N/A	U	wt	mut	mut	wt	N/A	N/A
<b>BT143</b>	GBM-r	46	F	M	wt	mut	mut	wt	mut	homo del
<b>BT147</b>	GBM-r	56	M	U	vIII	mut	mut	wt	wt	homo del
<b>BT189</b>	GBM	55	F	U	wt	mut	mut	wt	wt	wt

Common GBM molecular alterations including *MGMT* promoter methylation, *EGFR*, *PTEN*, *TP53*, *NF1*, *IDH1*, and *CDKN2A* mutation statuses for the 11 BTIC lines used in this study. Mut indicates mutant and wt indicates wild-type. U indicates unmethylated and M indicated methylated. U/M indicates hemimethylation. vIII indicates *EGFR* variant III, an activating deletion characteristic of GBM, het del indicates a heterozygous deletion, homo del indicates a homozygous deletion, N/A indicates not available.

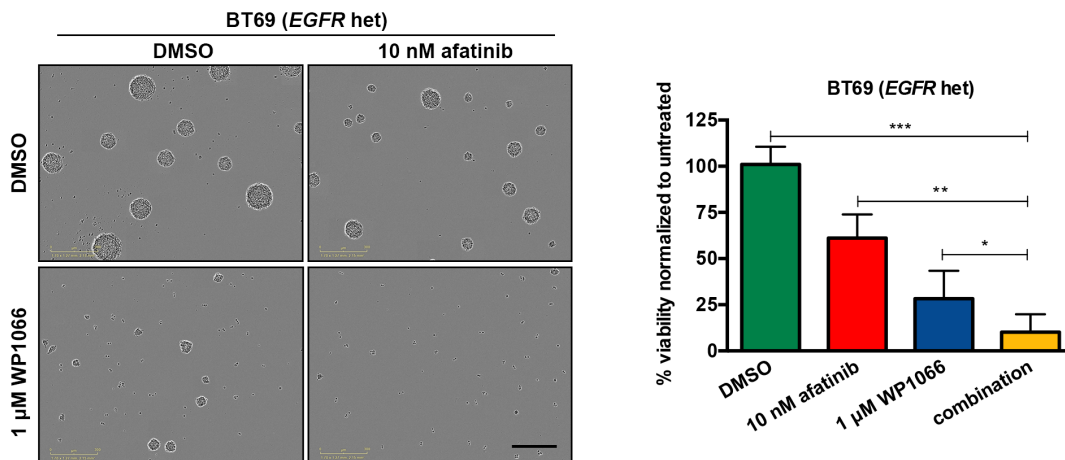
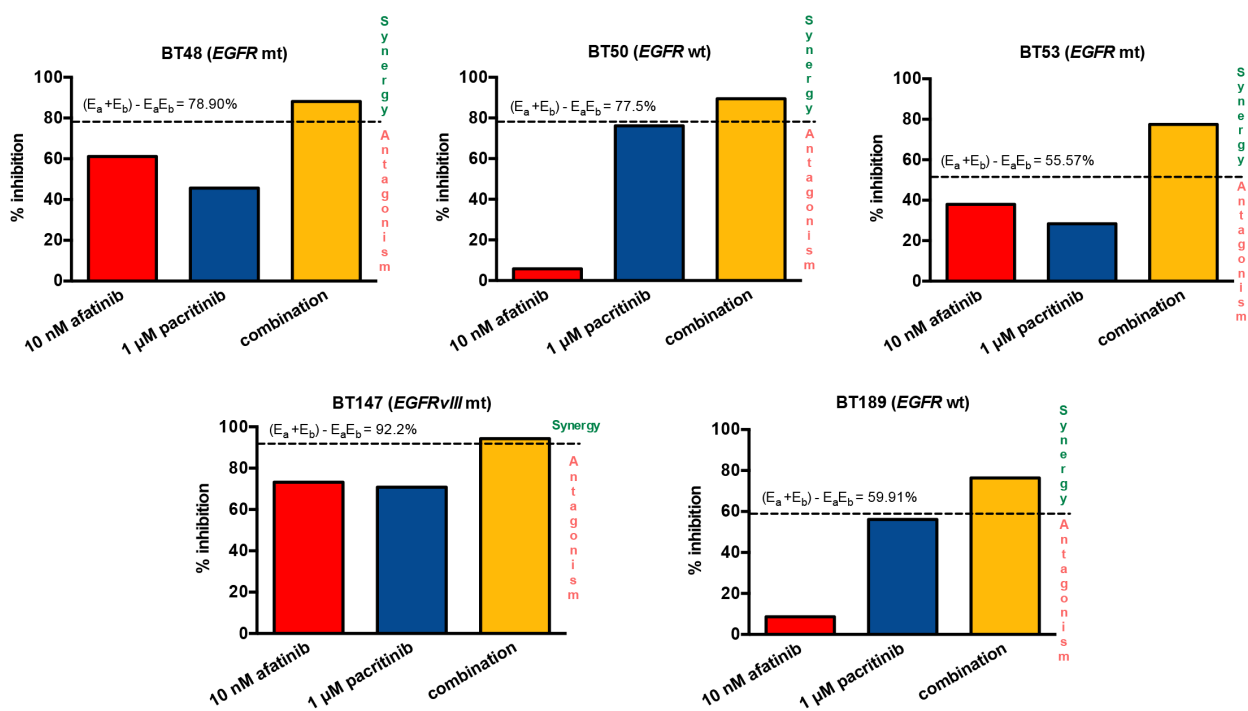




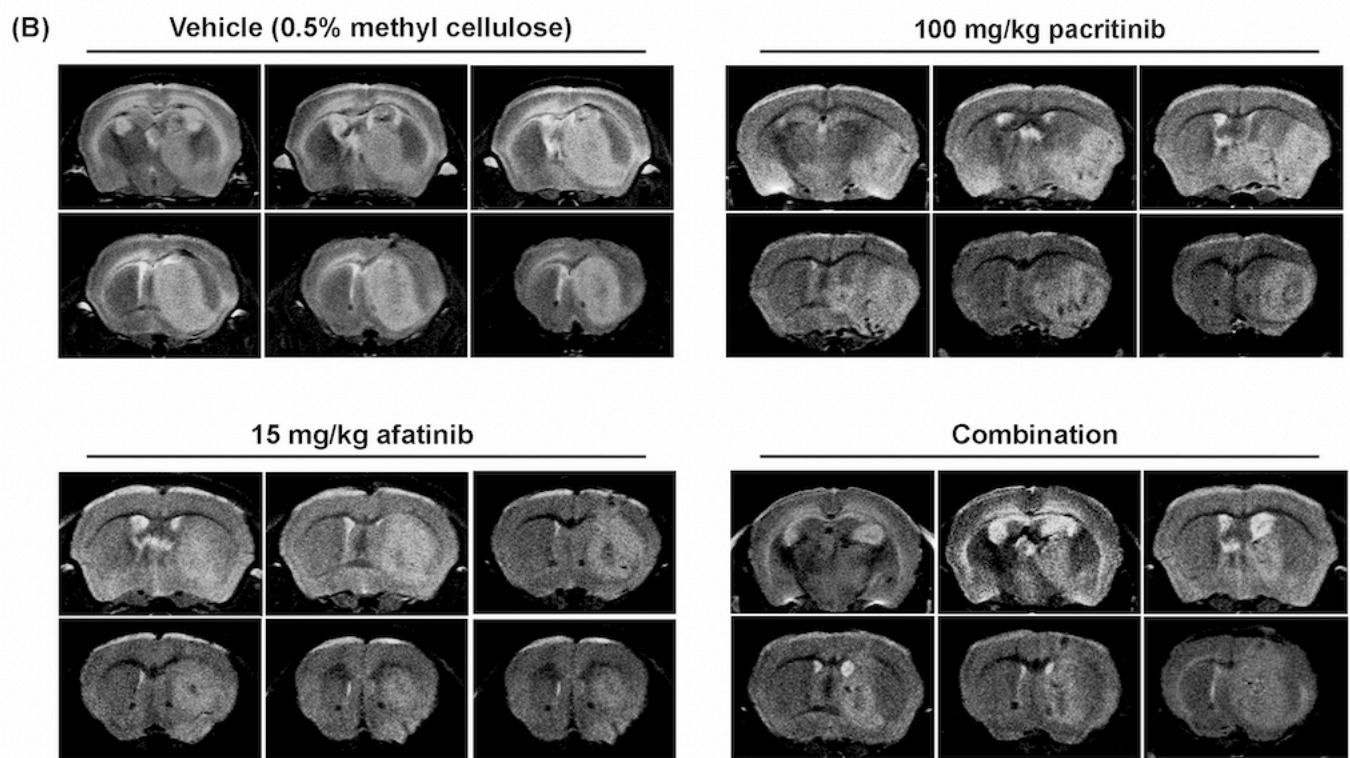
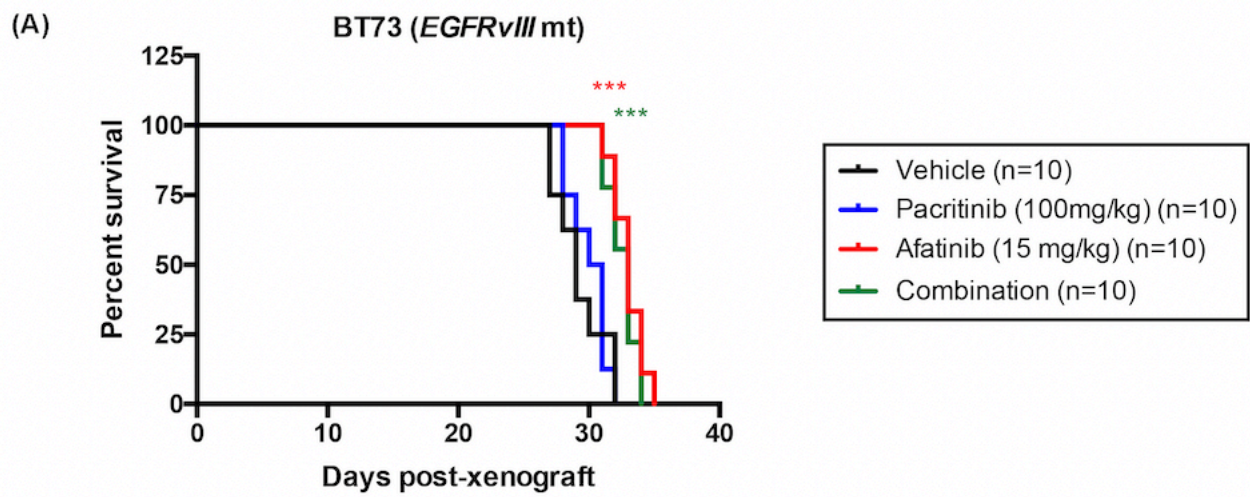
Supplemental Fig. 2



Supplemental Fig. 3

**(A)****(B)****(C)**

		<b>BT69 (EGFR het)</b> erlotinib (μM)					<b>BT147 (EGFRvIII mt)</b> erlotinib (μM)				
		10	5	3	1	0	10	5	3	1	0
% inhibition pacritinib (μM)	1	85.0022841	80.3849223	78.2738674	70.8339955	-5.1306994	87.0287556	85.5860001	84.8352194	84.9468128	38.5645045
	0.3	77.5243282	65.4335772	59.6033463	51.4351889	-14.877944	76.7758572	74.9831207	70.8651323	67.2372072	-11.39176
	0.1	76.5056222	59.7428594	54.6965544	42.1872791	-8.7372337	76.7923093	71.3976478	67.3668418	61.2299209	-5.7182979
	0	68.7835636	58.7946963	50.6916304	38.5794293	0	76.0670927	75.2702882	66.7276967	64.7736307	0
Excess over bliss pacritinib (μM)		erlotinib (μM)					erlotinib (μM)				
		10	5	3	1	0	10	5	3	1	0
	1	17.820342	23.7043463	30.1121012	35.4058712	0	1.73205579	0.77882109	5.27622379	6.58830734	0
	0.3	13.3851286	12.7693831	16.2477875	21.9938779	0	3.43514385	2.52998203	7.92773668	6.4764801	0
0.1	10.4495115	4.54836681	8.3131114	8.9743086	0	2.09377154	-2.4585218	2.54175454	-1.529361	0	
0	0	0	0	0	0	0	0	0	0	0	



Supplemental Fig. 5