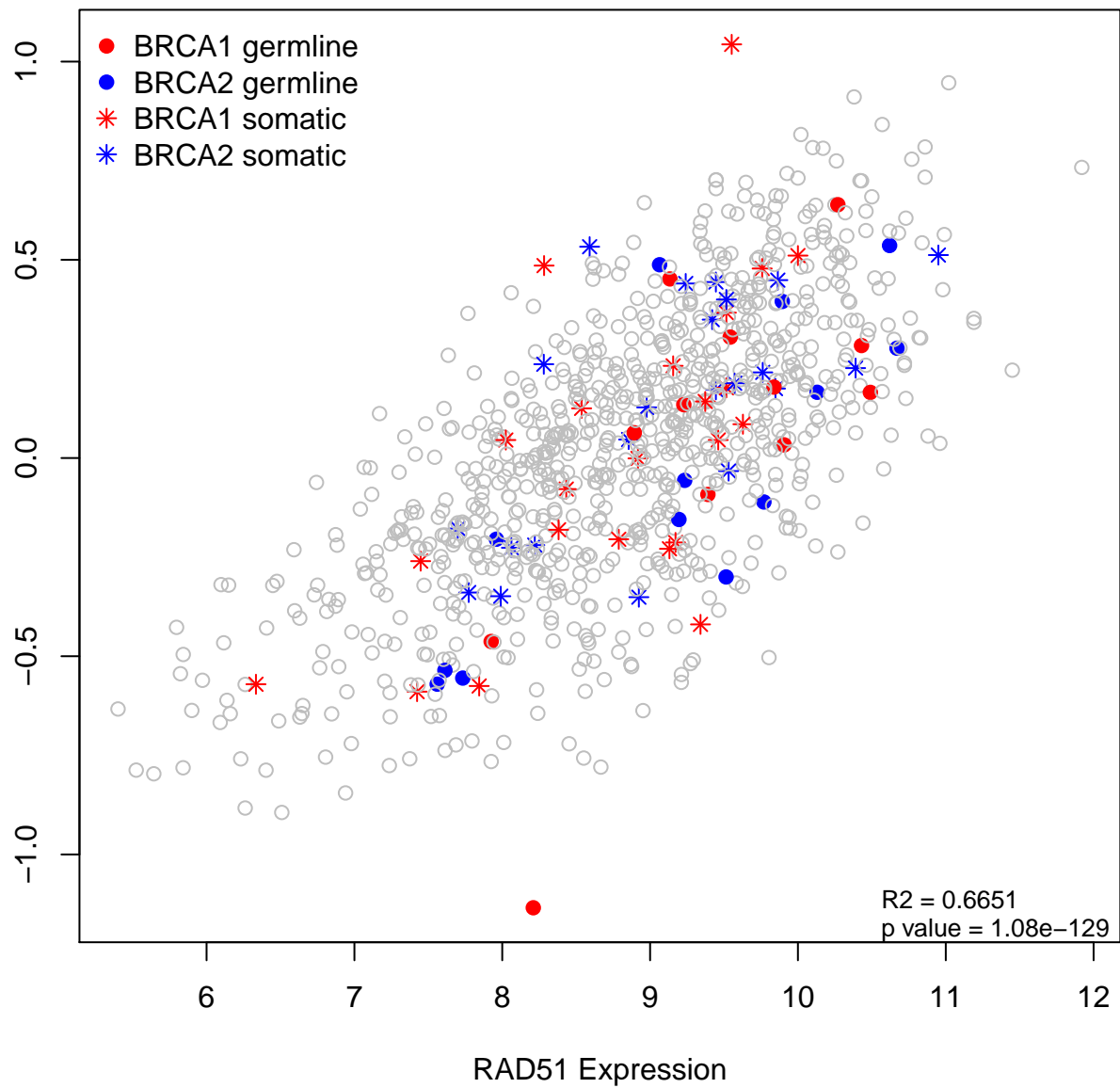
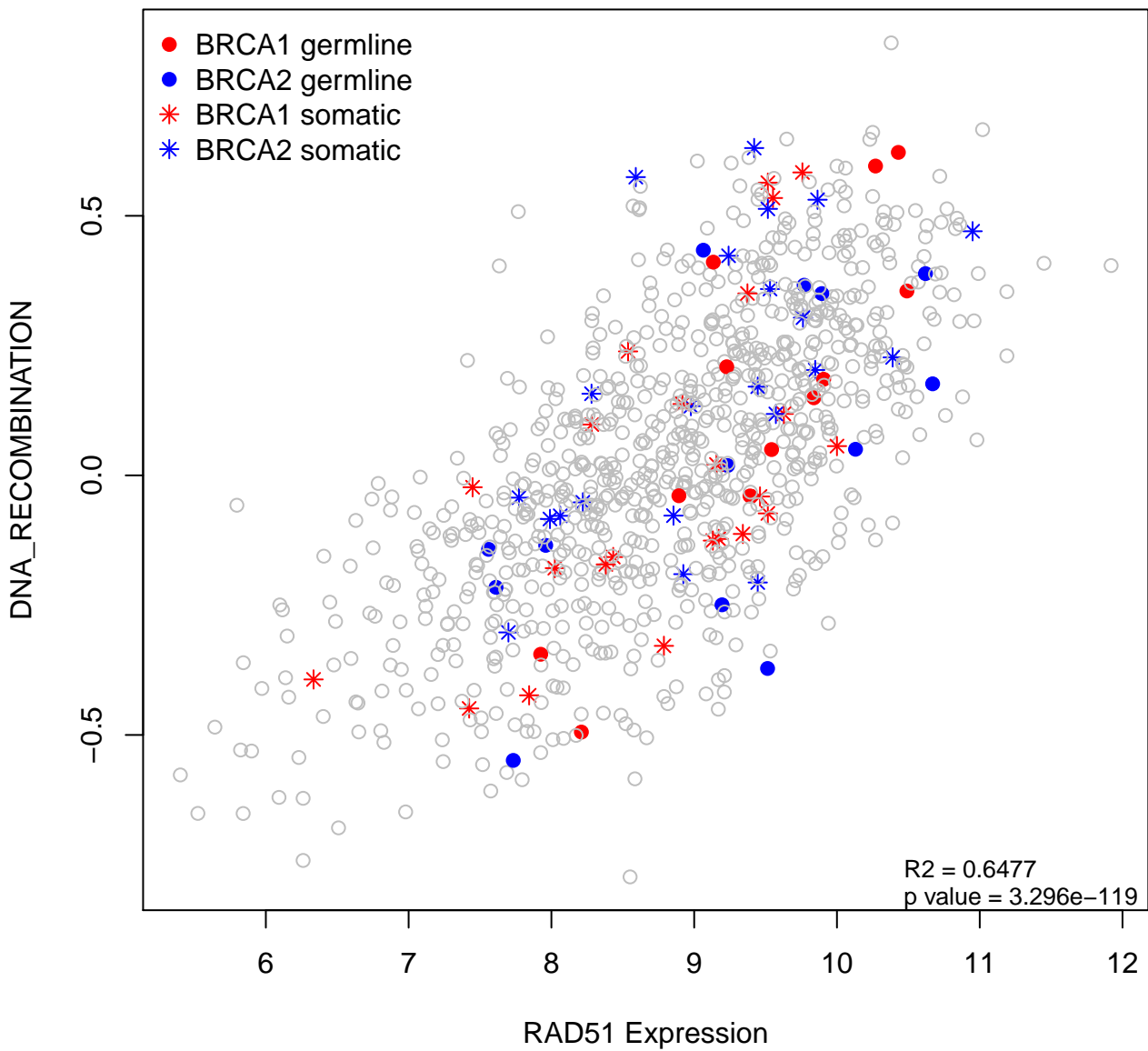
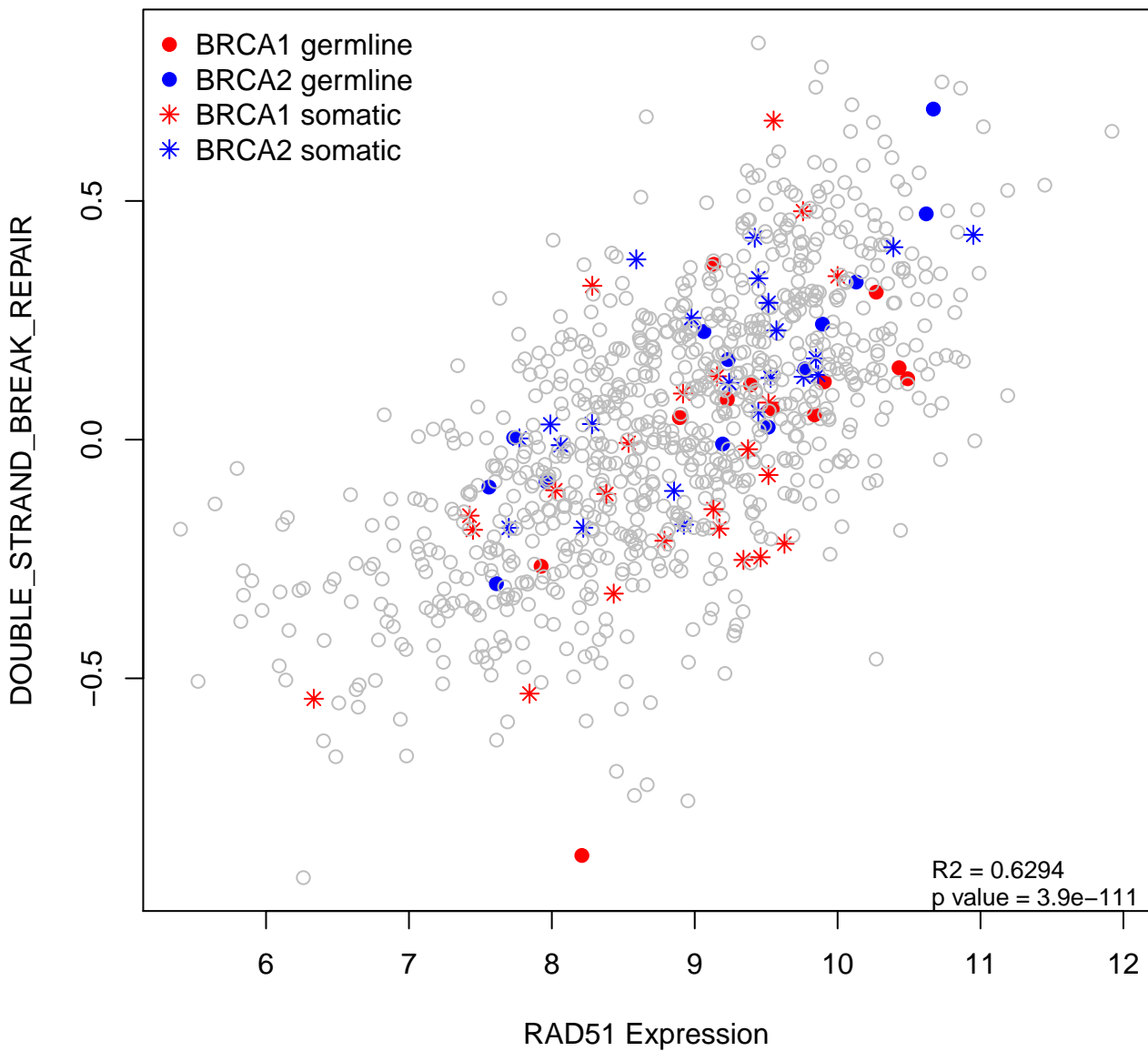


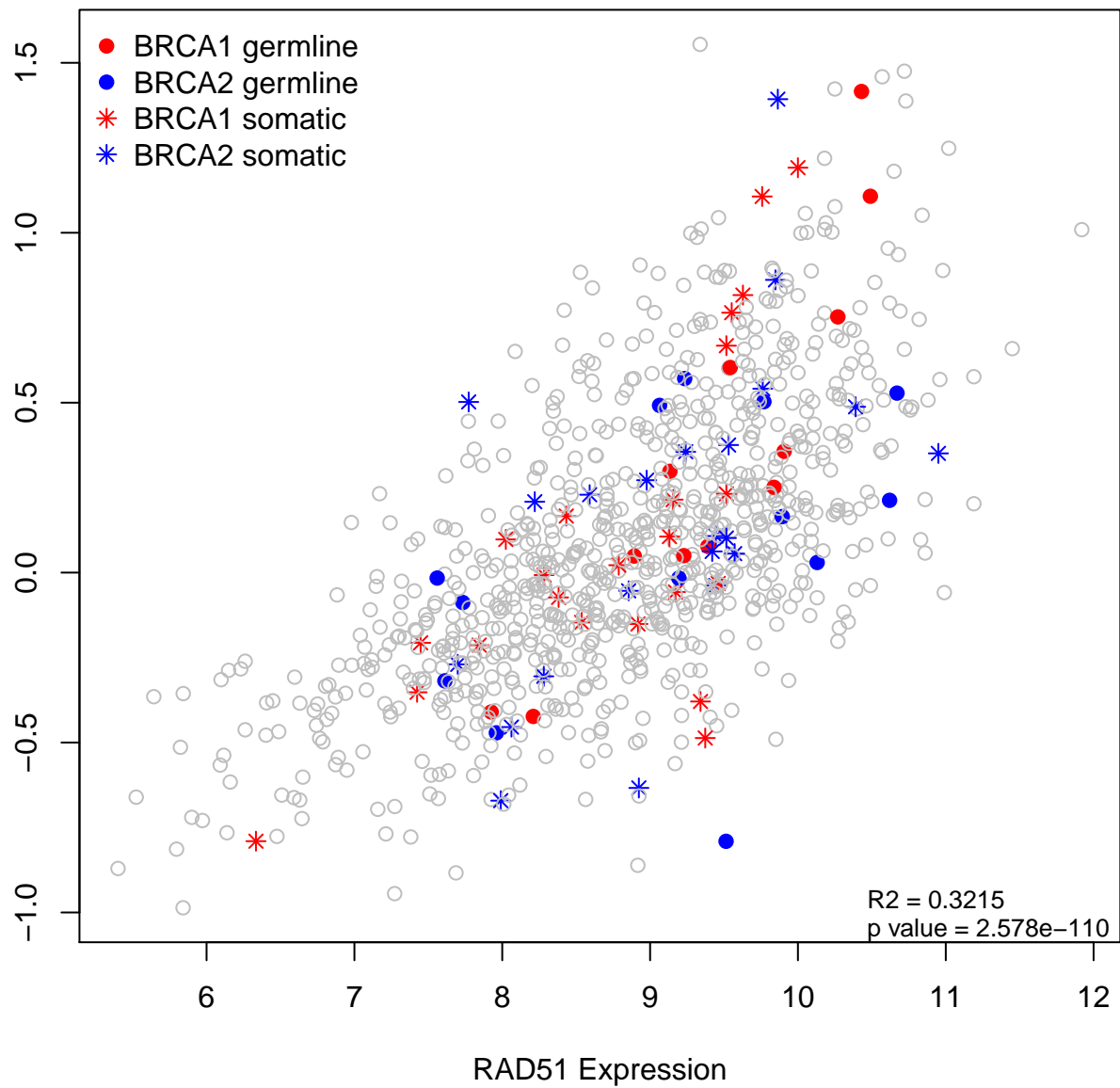
OMOLOGOUS_RECOMBINATION_REPAIR_OF_REPLICATION_INDEPENDENT_DOUBLE_

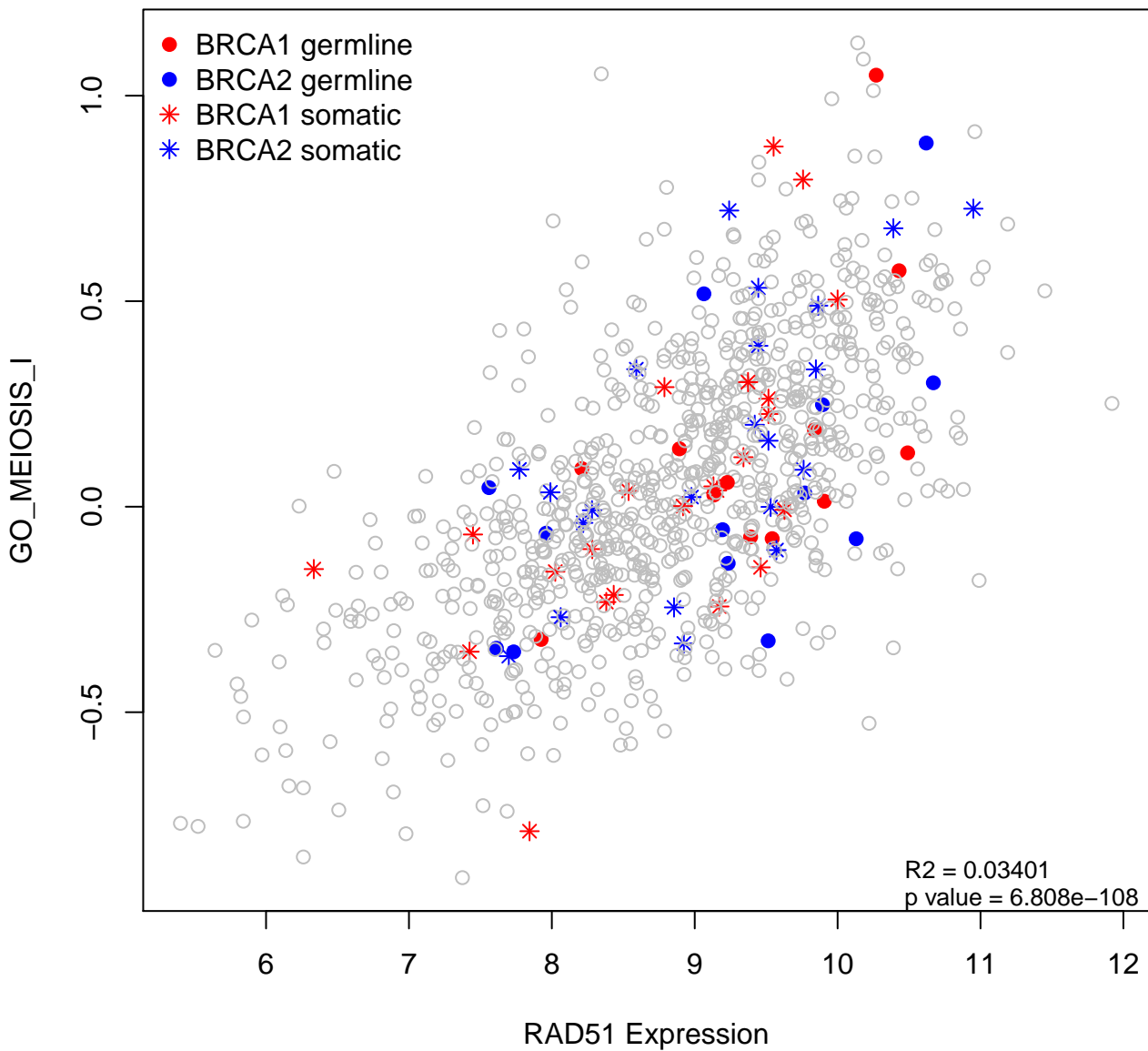


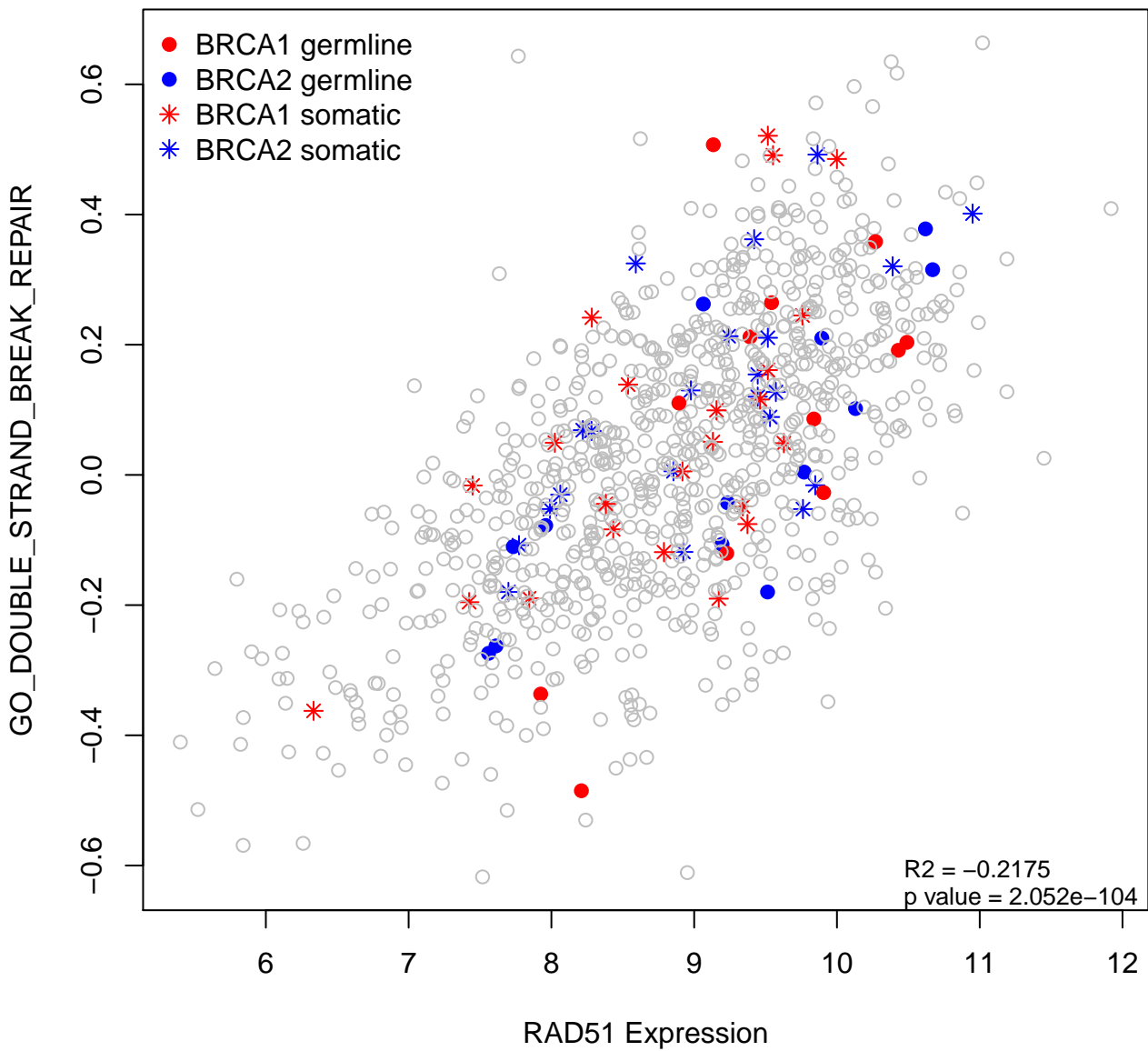




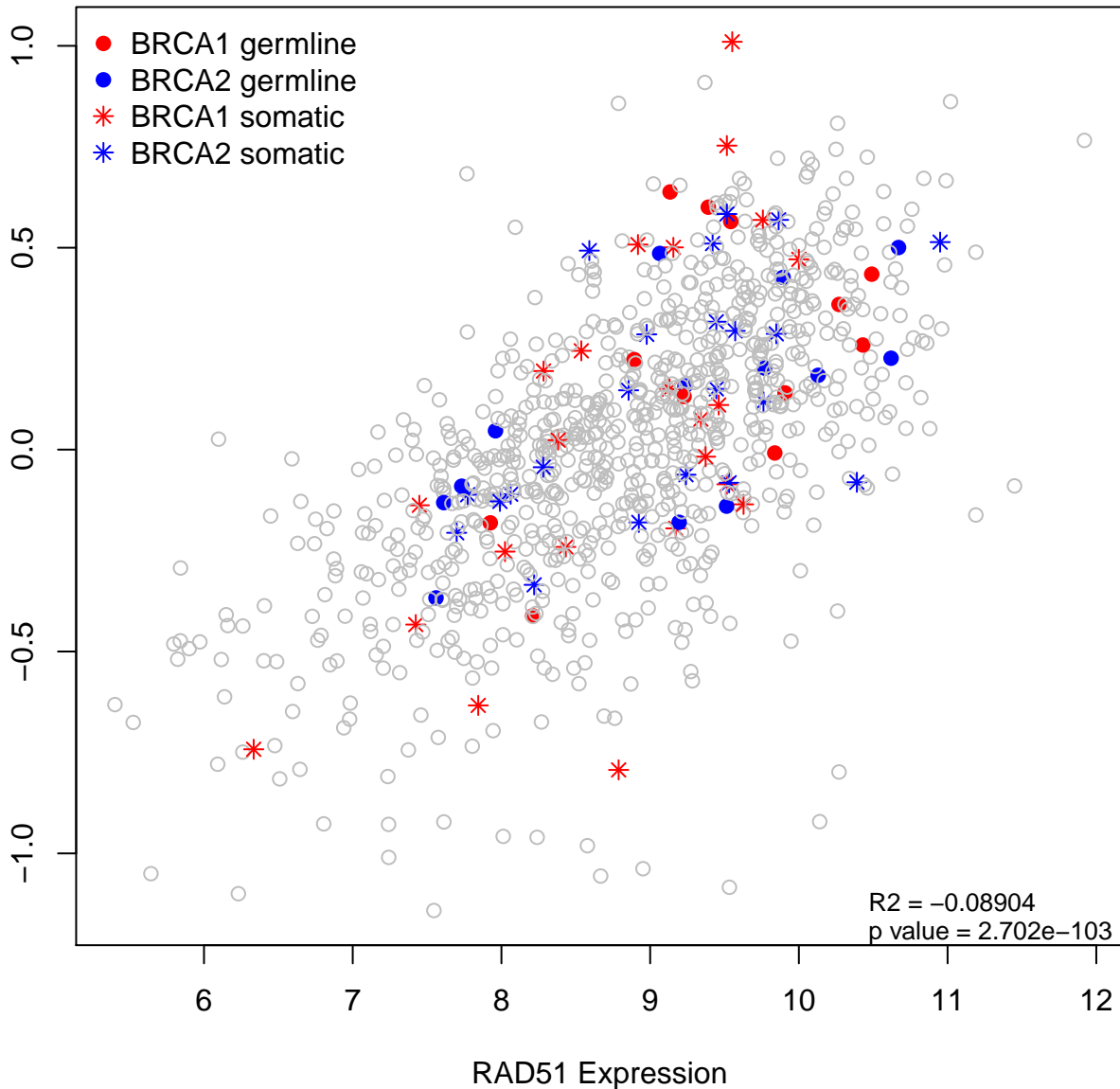
_REGULATION_OF_DOUBLE_STRAND_BREAK_REPAIR_VIA_HOMOLOGOUS_RECOMBIN

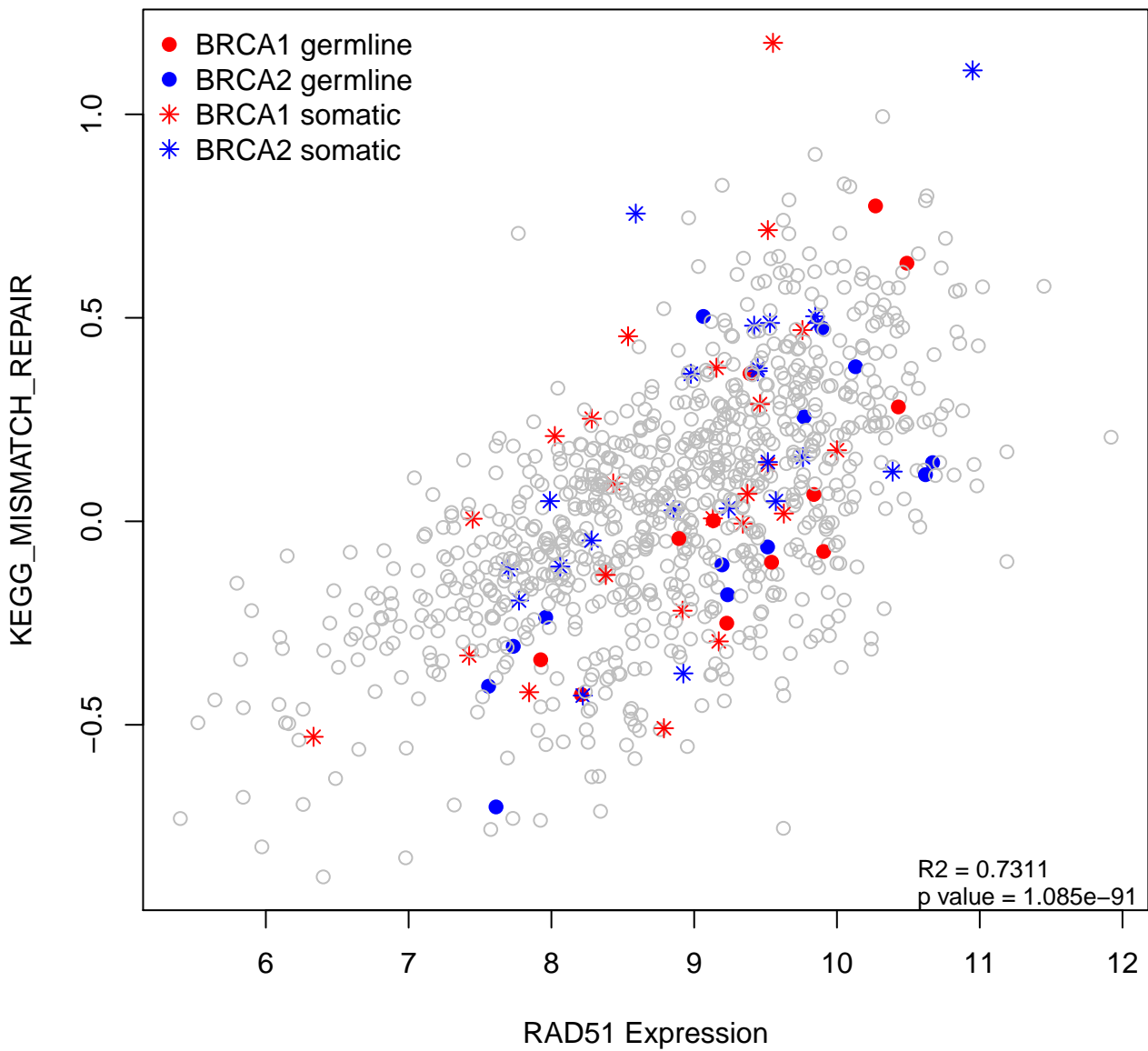


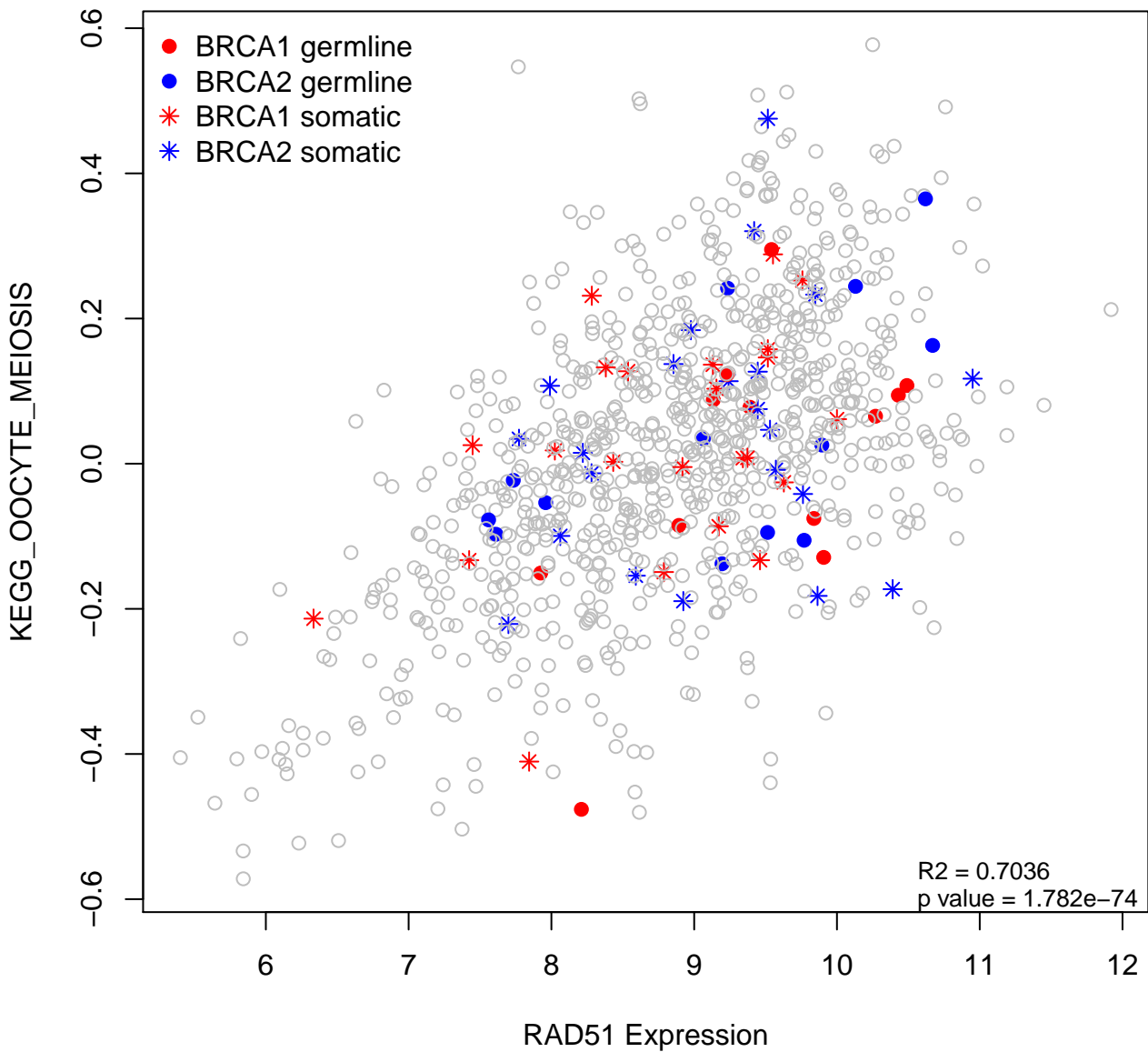


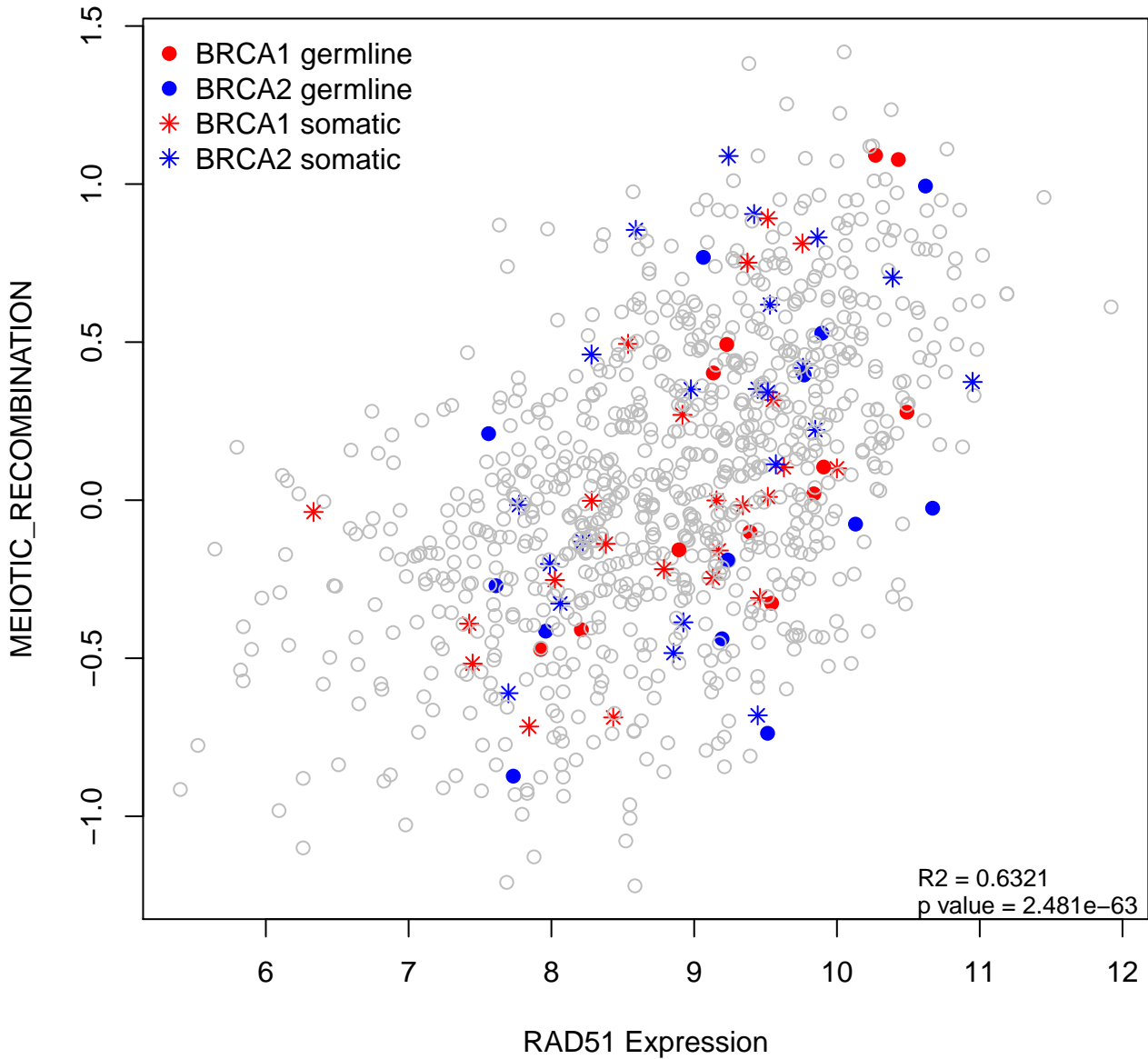


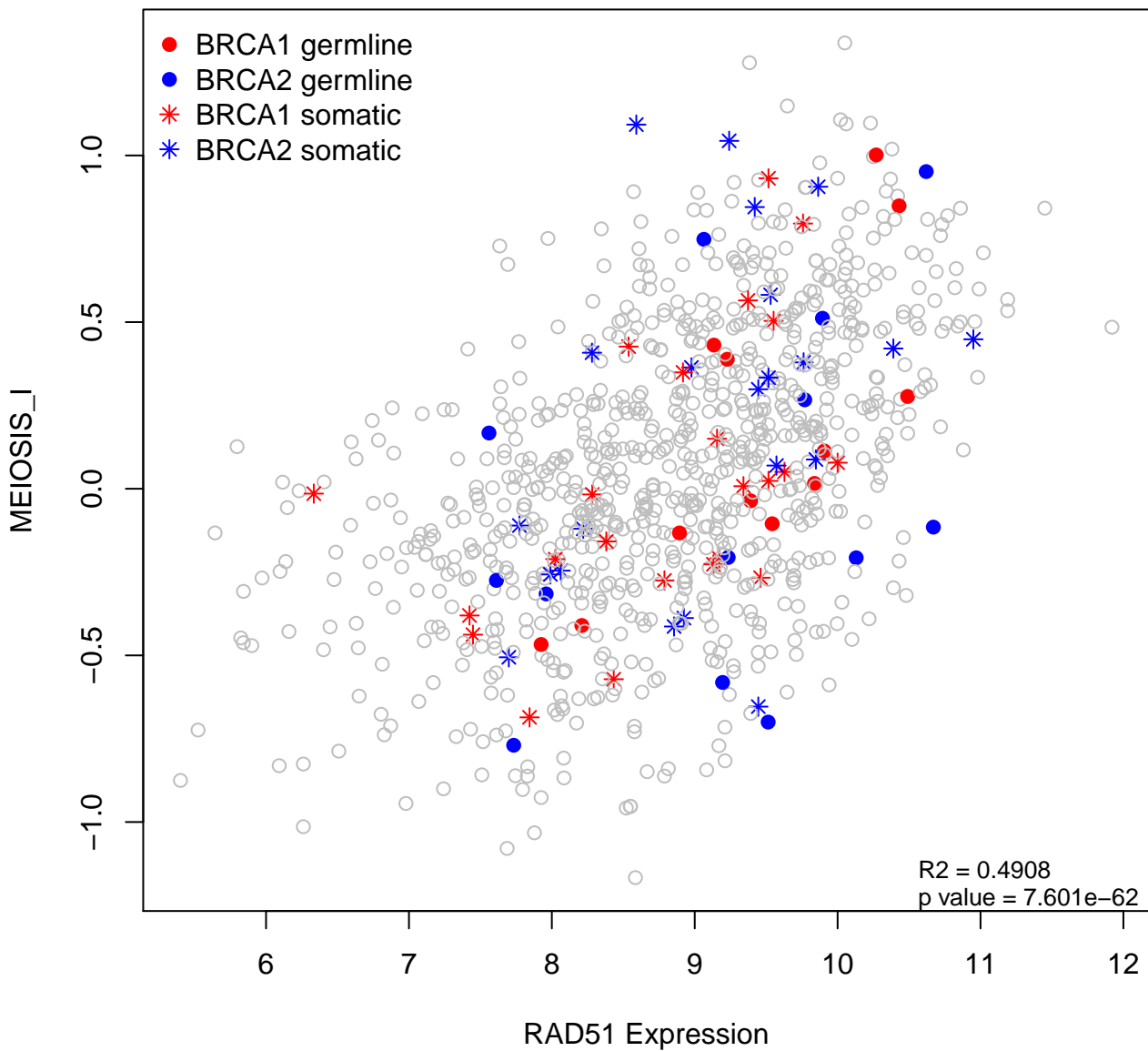
GEORGES_CELL_CYCLE_MIR192_TARGETS

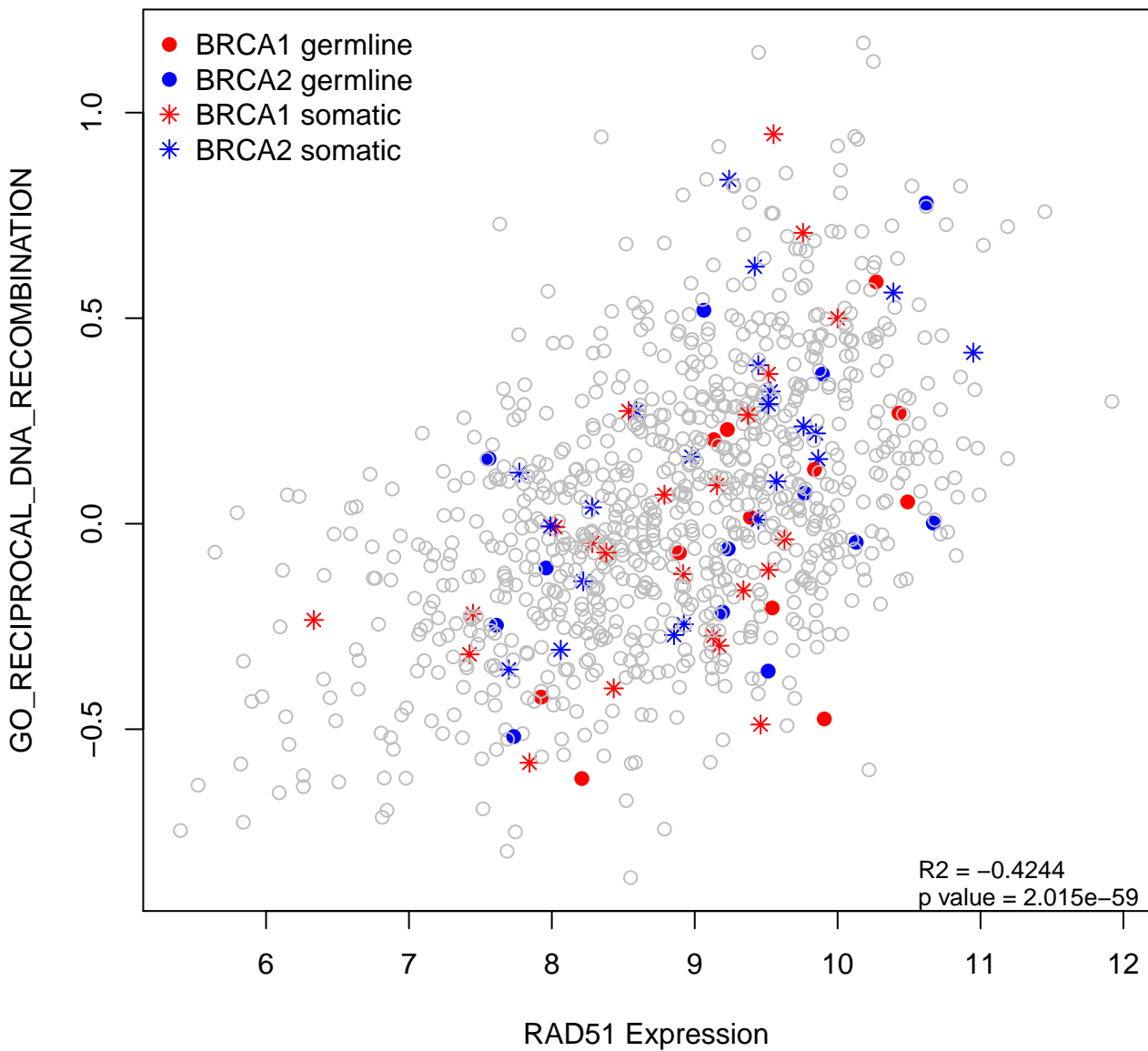


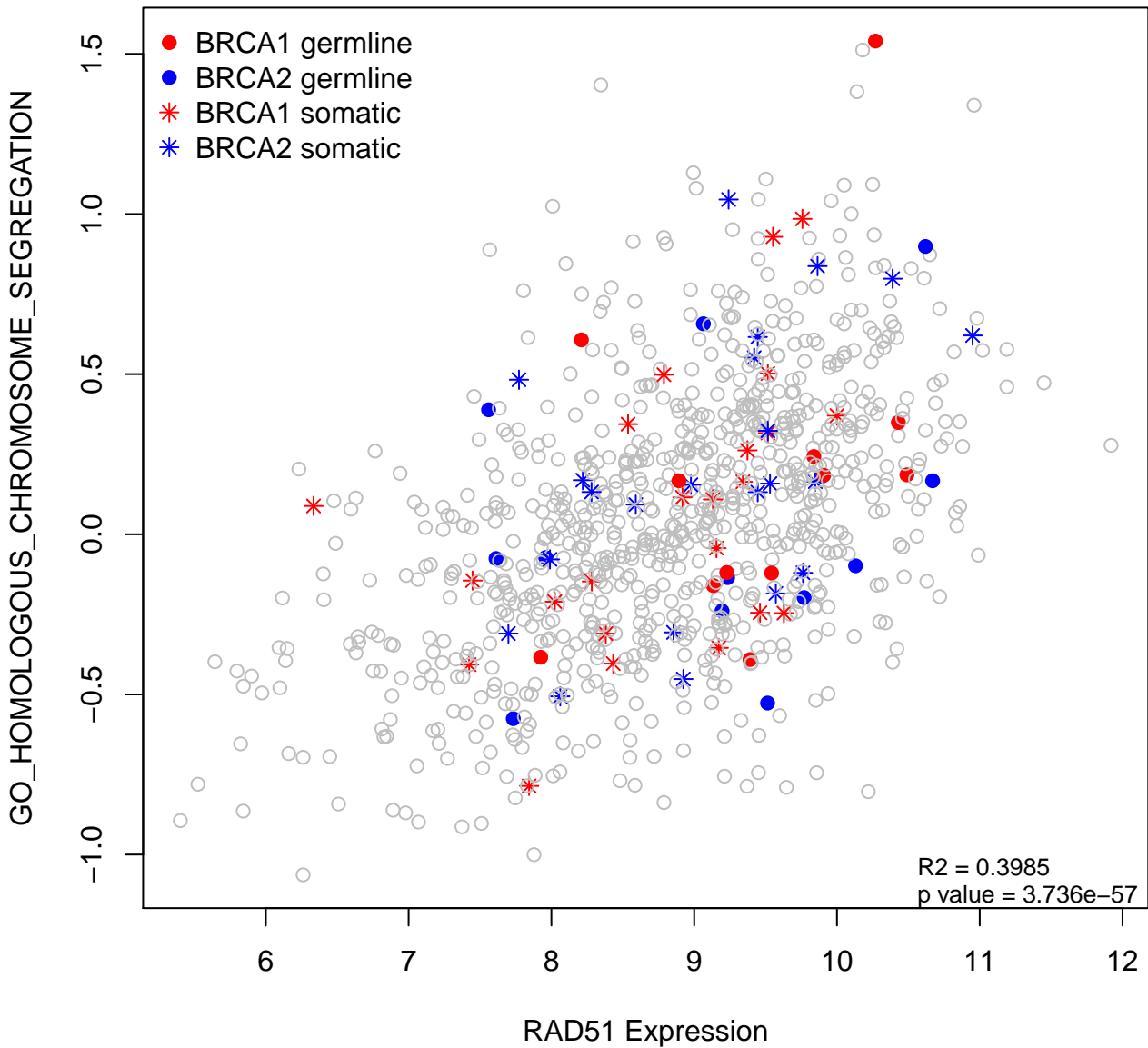


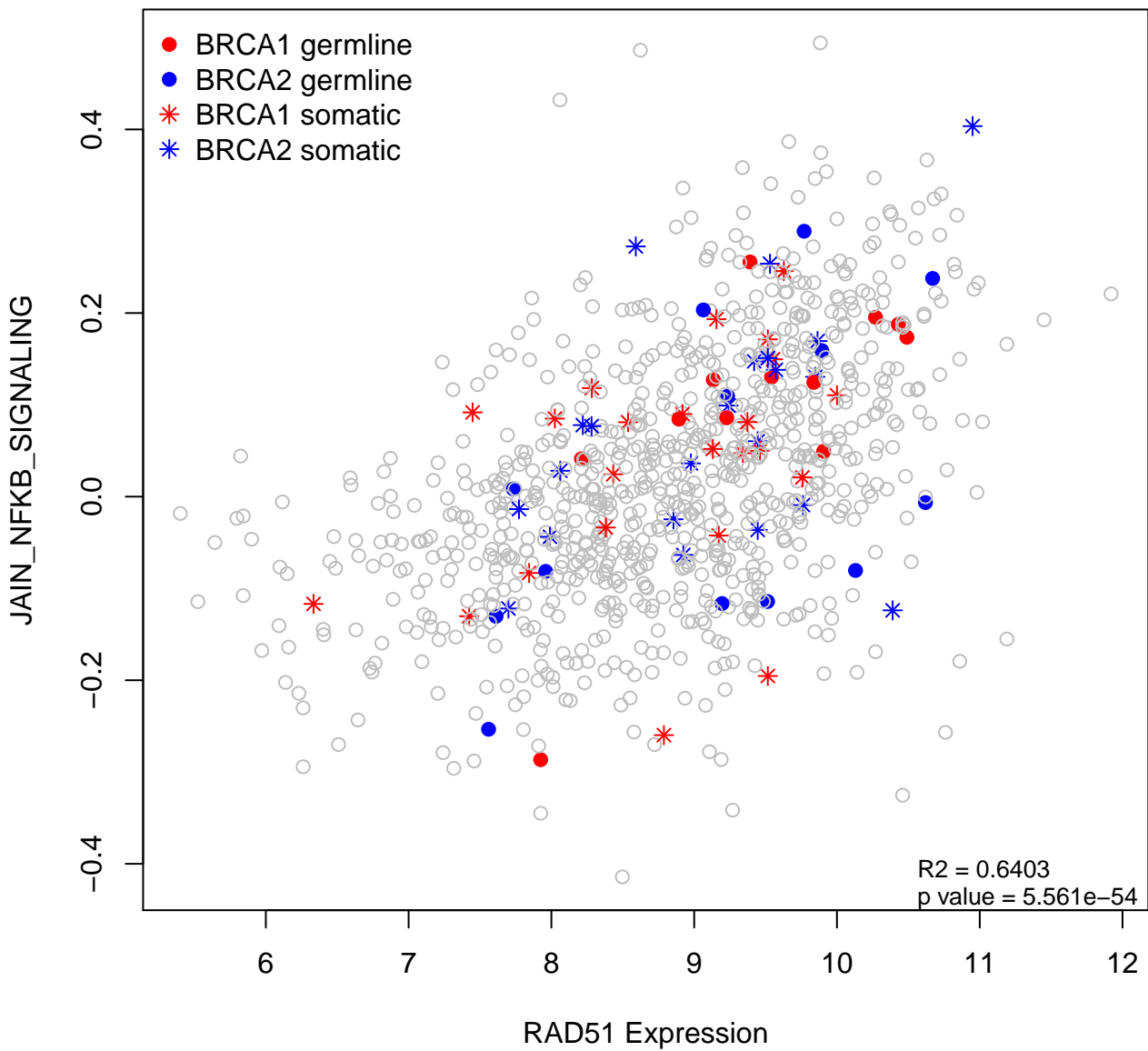


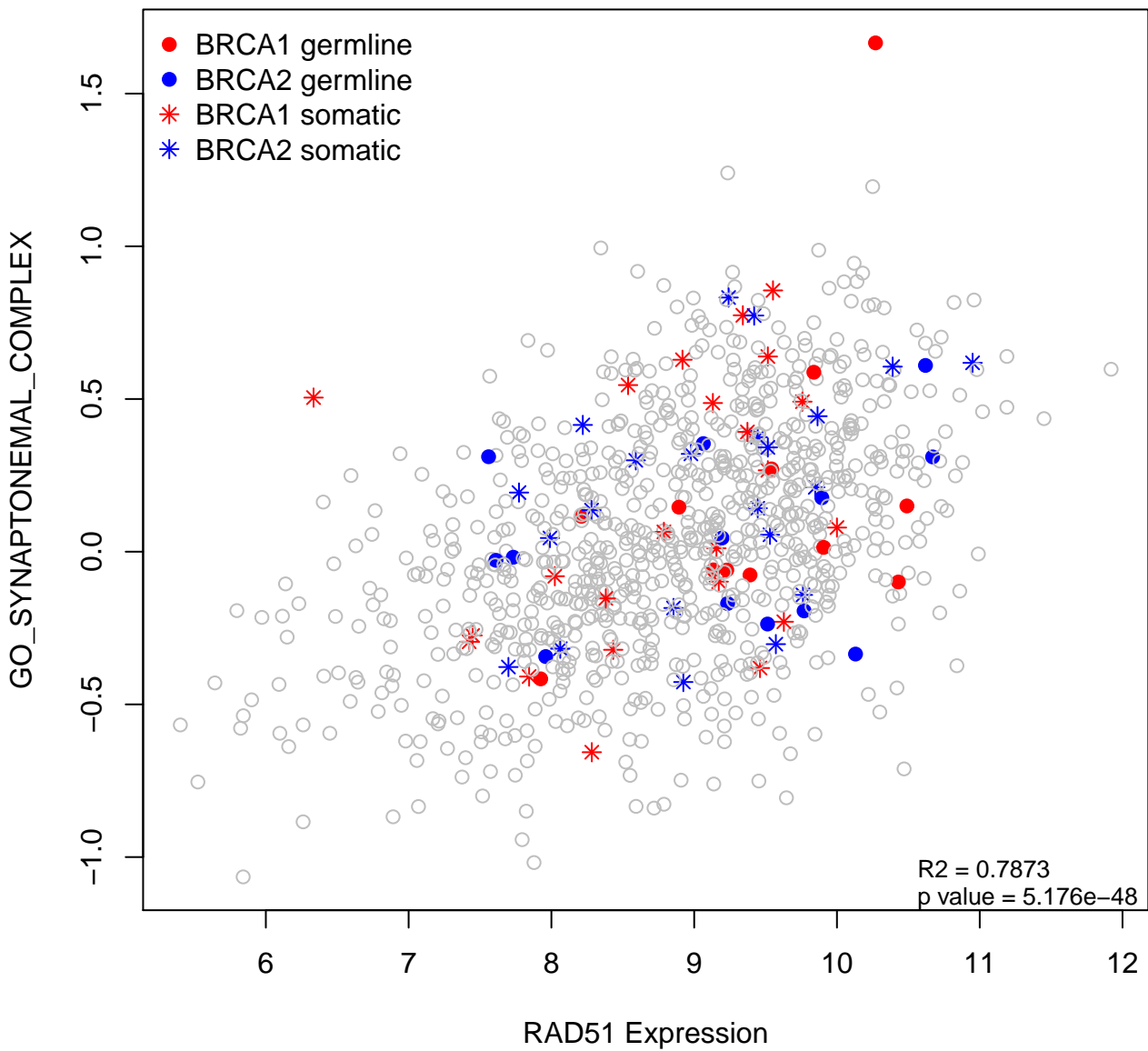




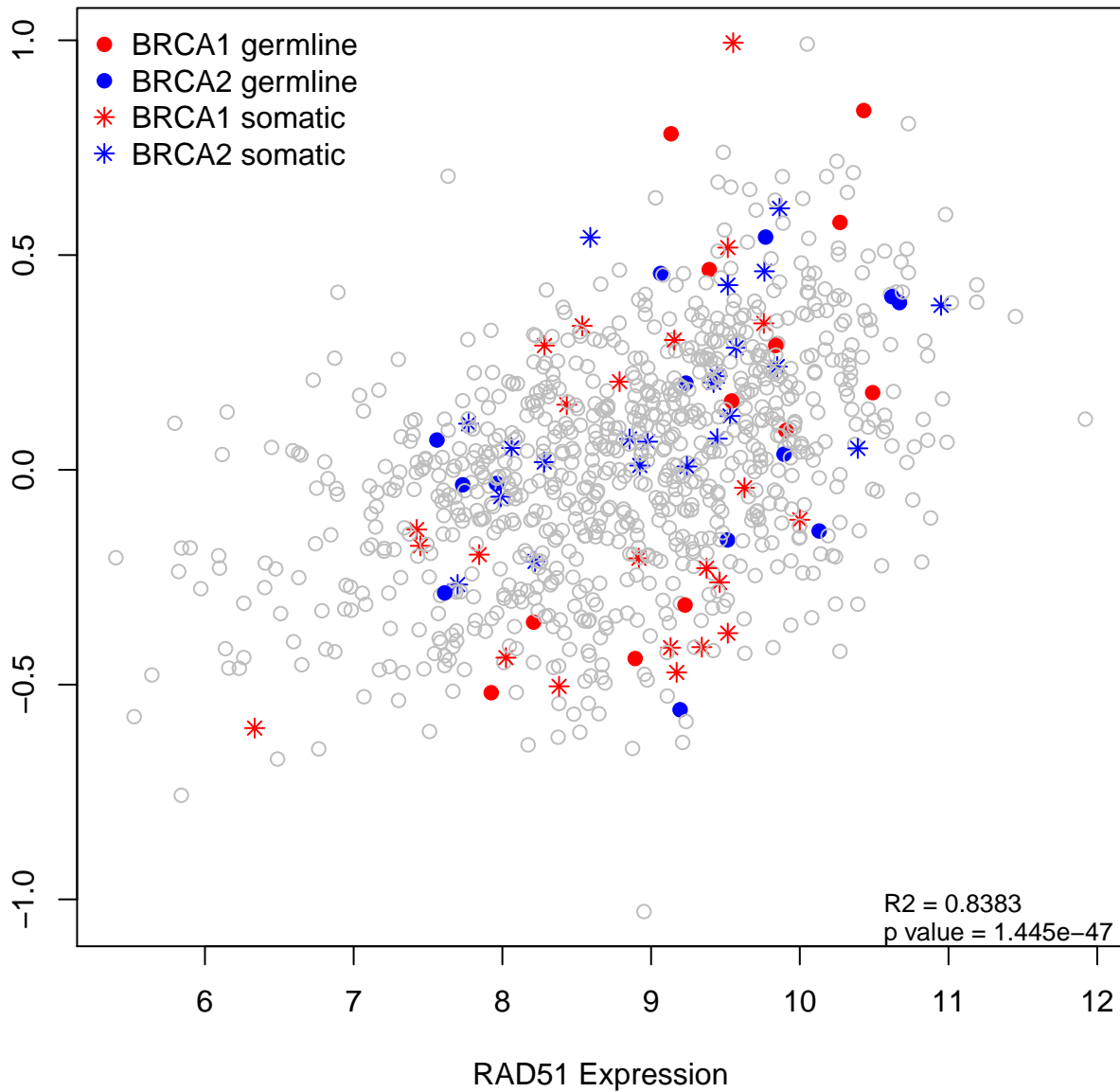


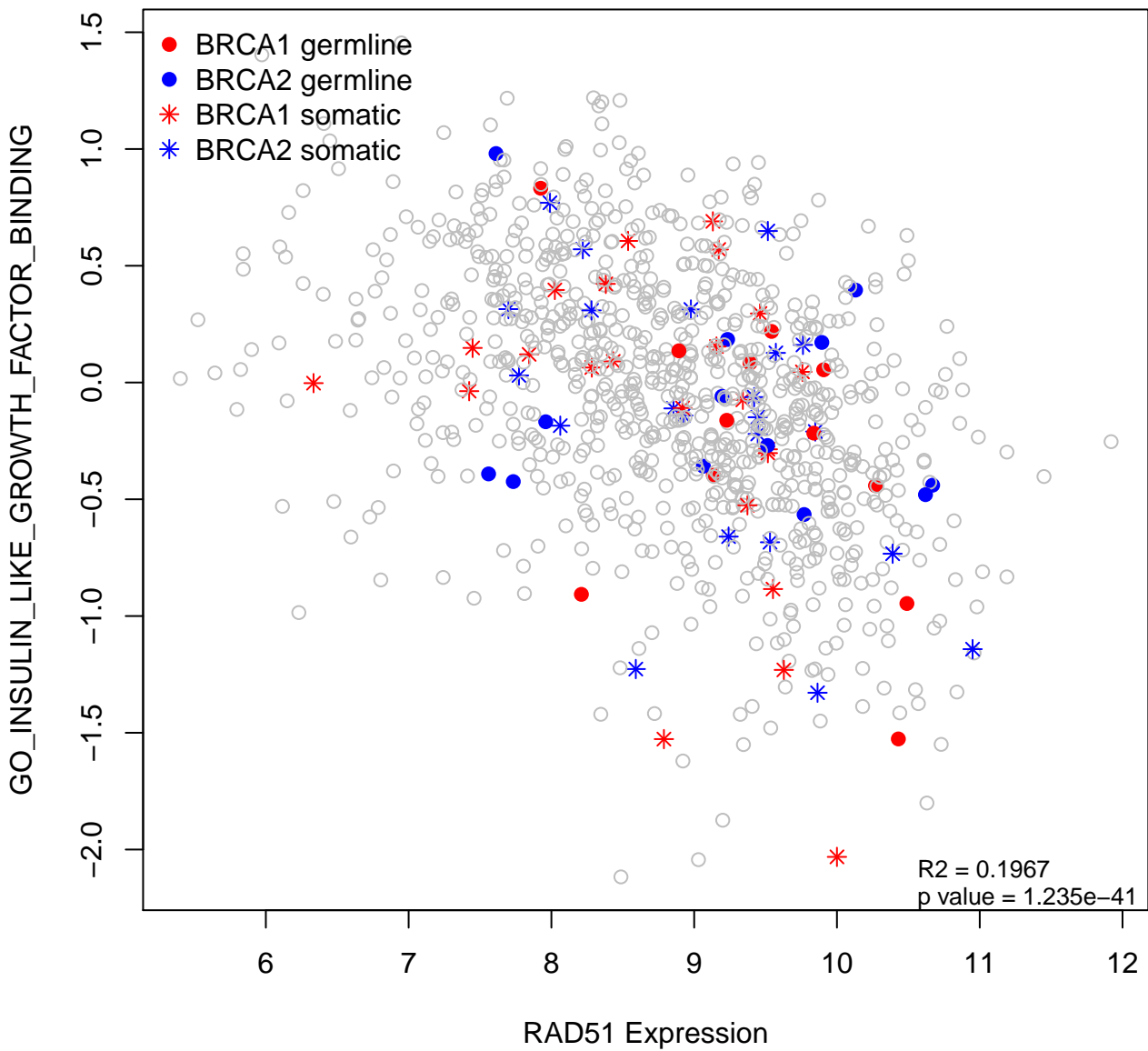


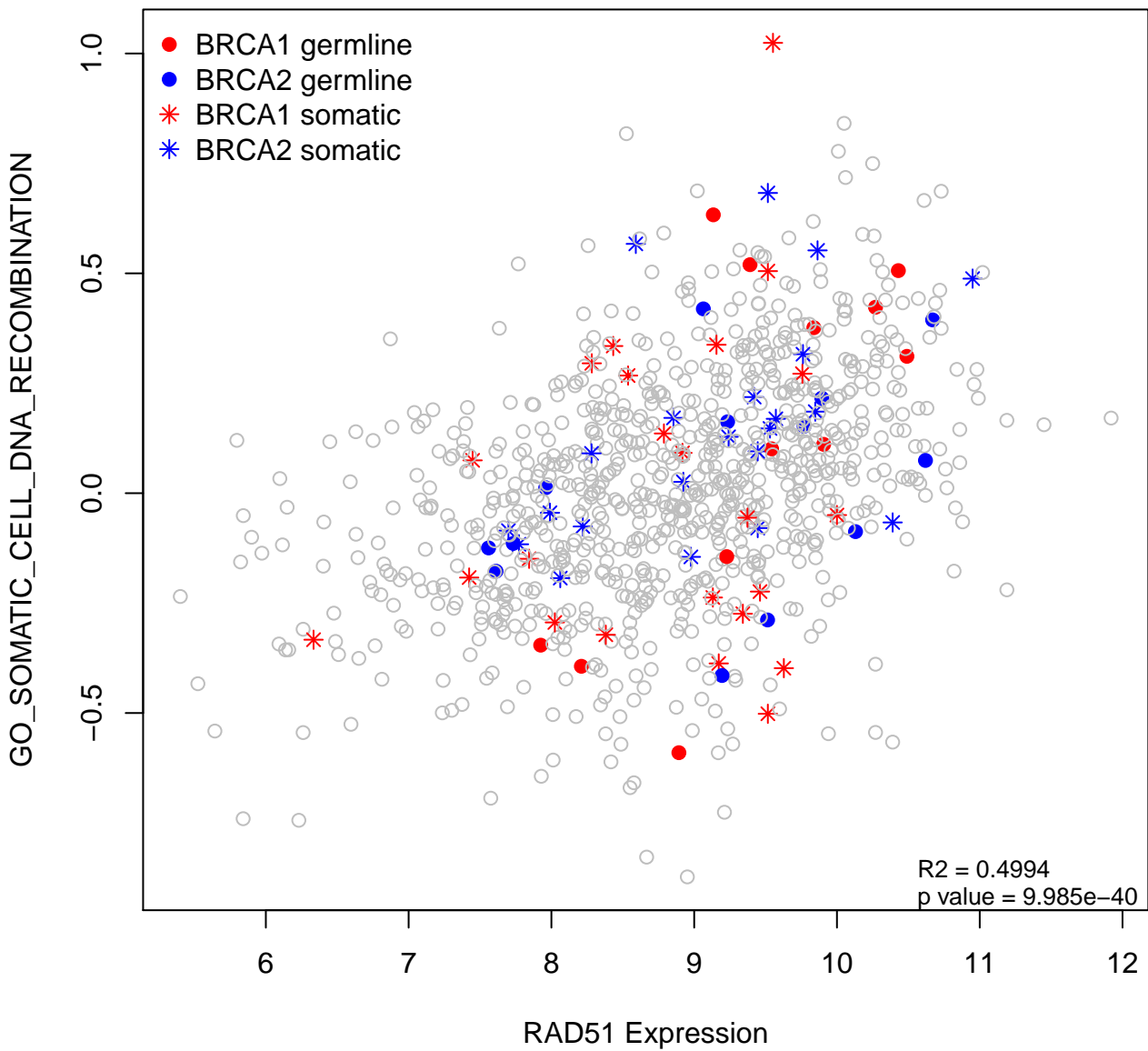


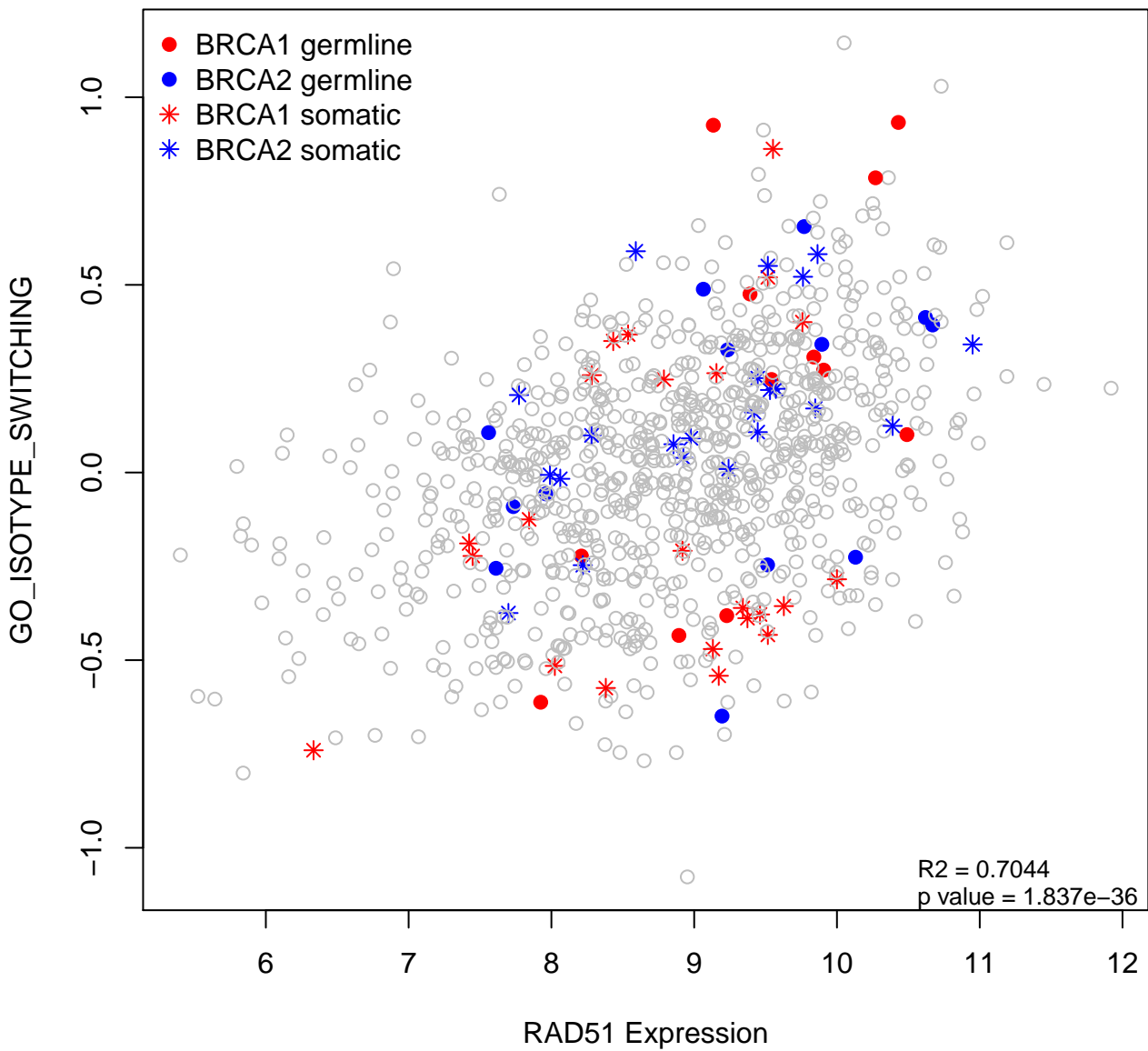


GO_SOMATIC_RECOMBINATION_OF_IMMUNOGLOBULIN_GENE_SEGMENTS

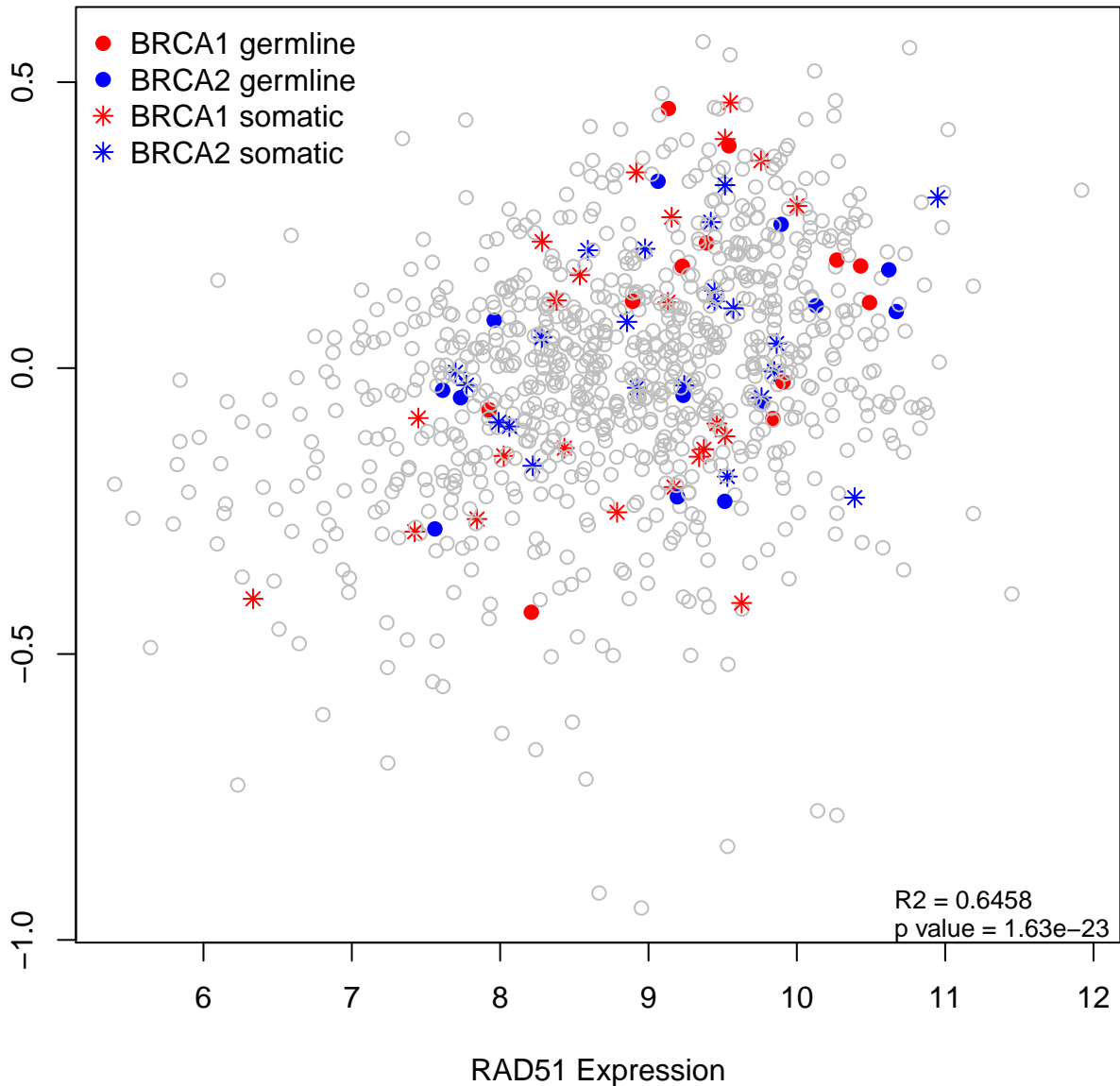


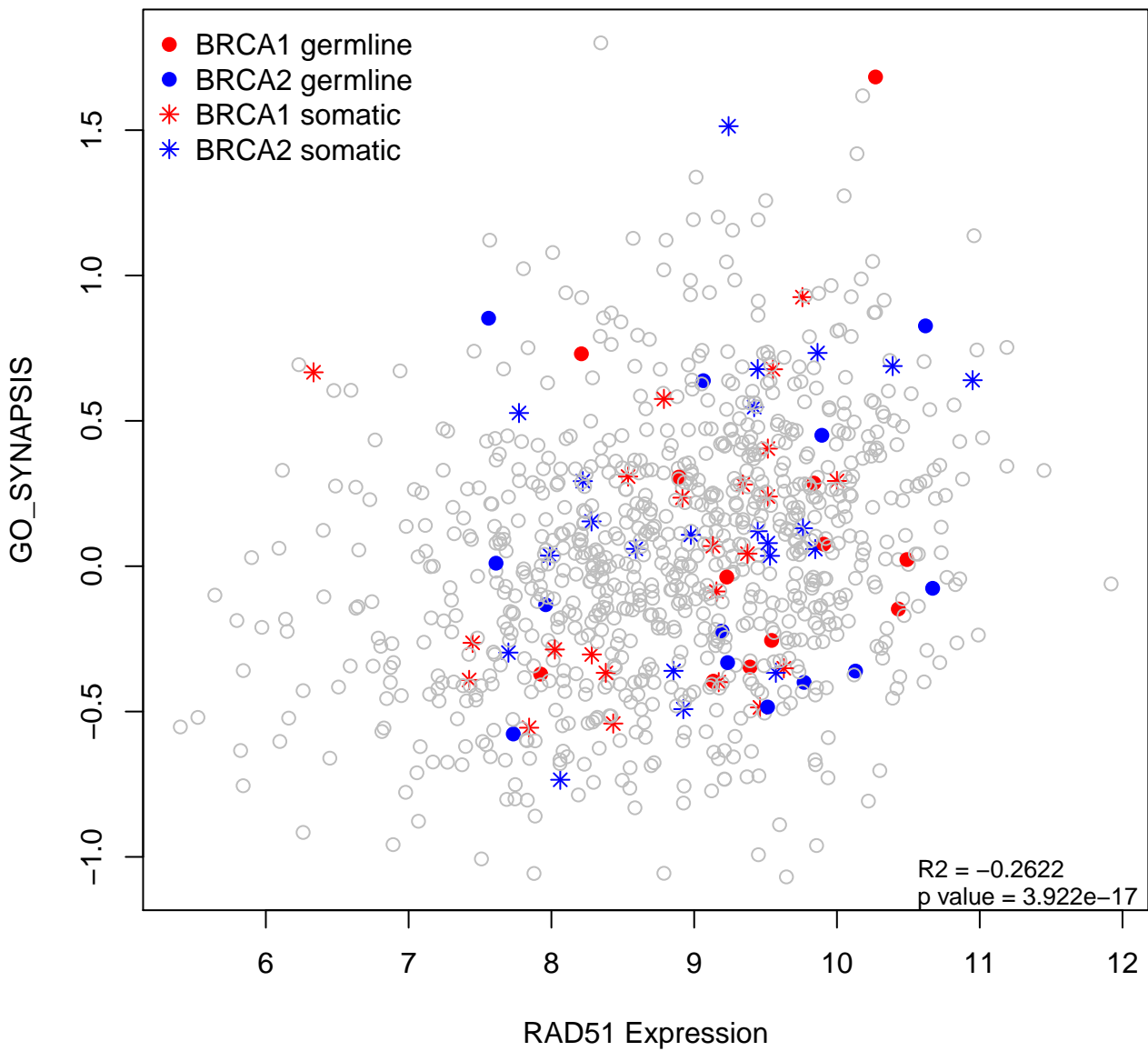




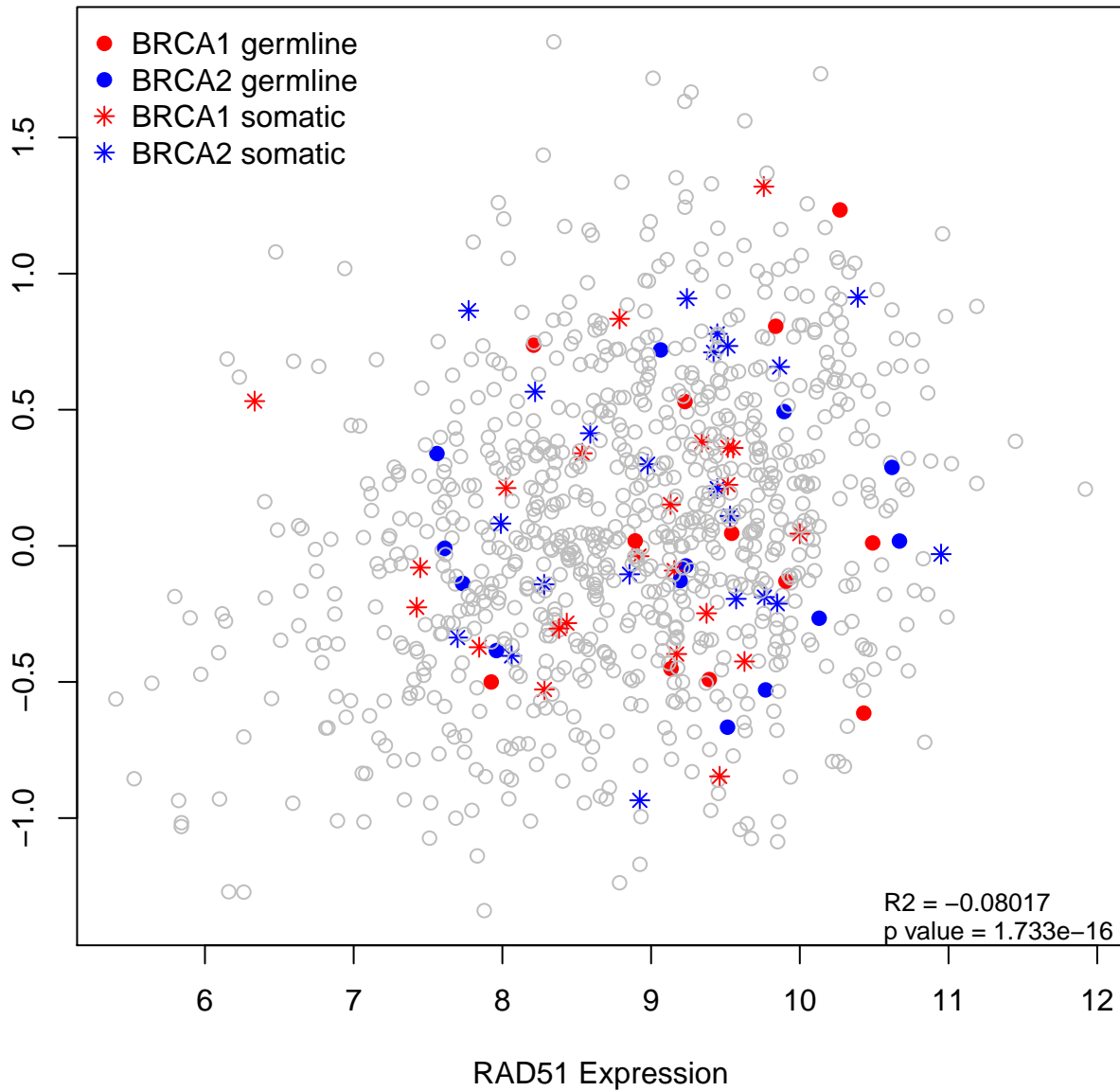


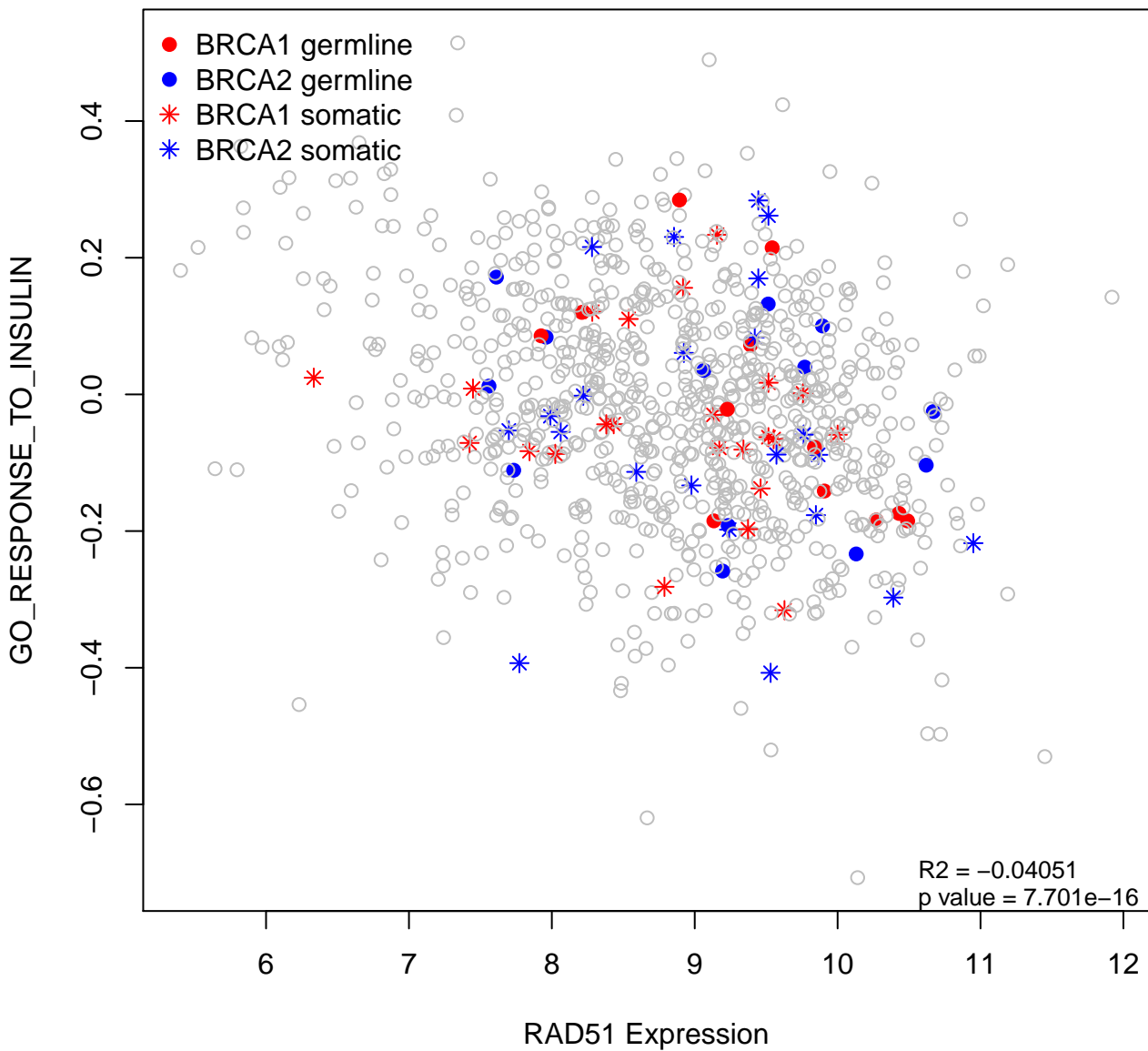
GEORGES_TARGETS_OF_MIR192_AND_MIR215



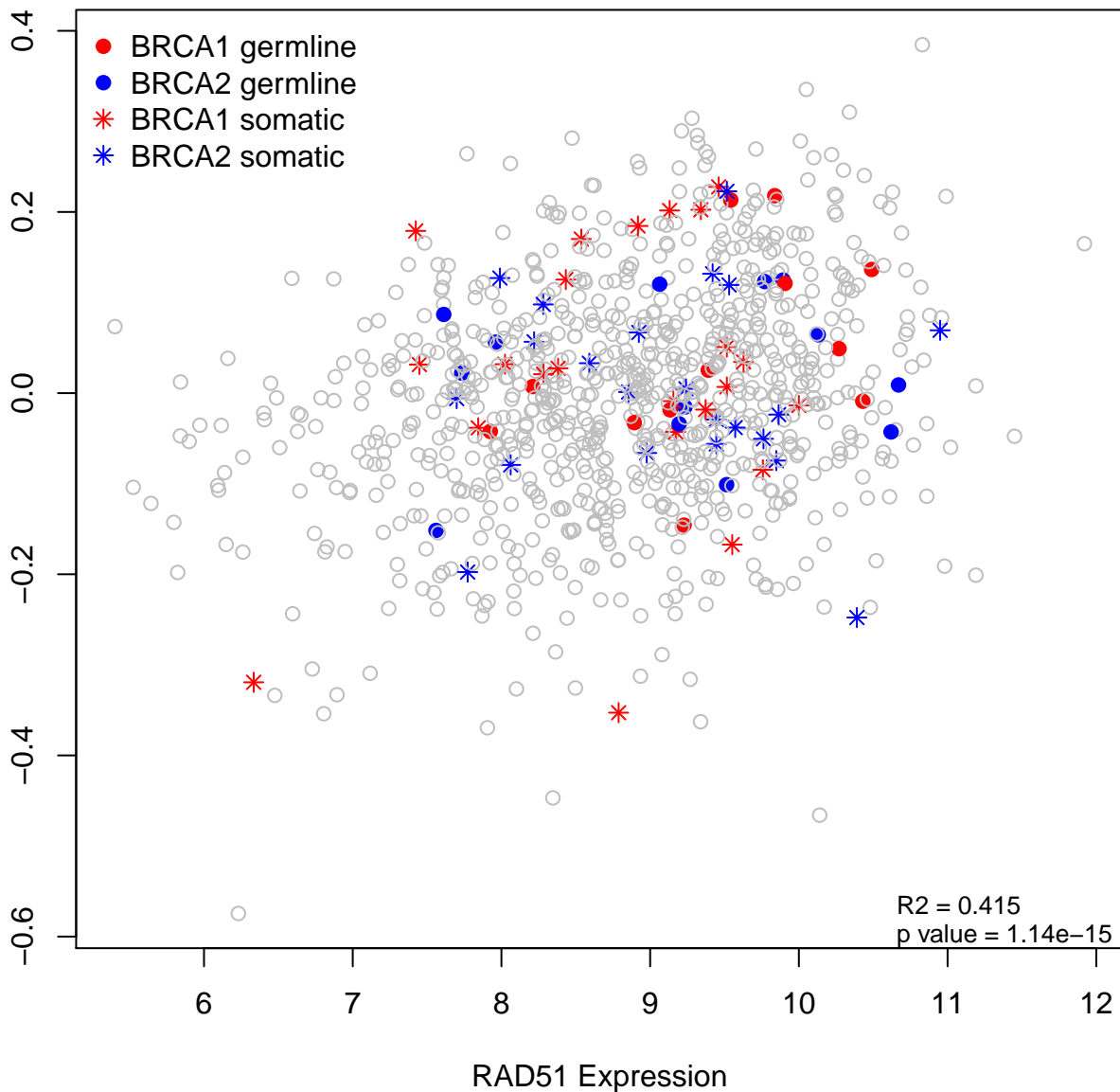


GO_SYNAPTONEMAL_COMPLEX_ORGANIZATION

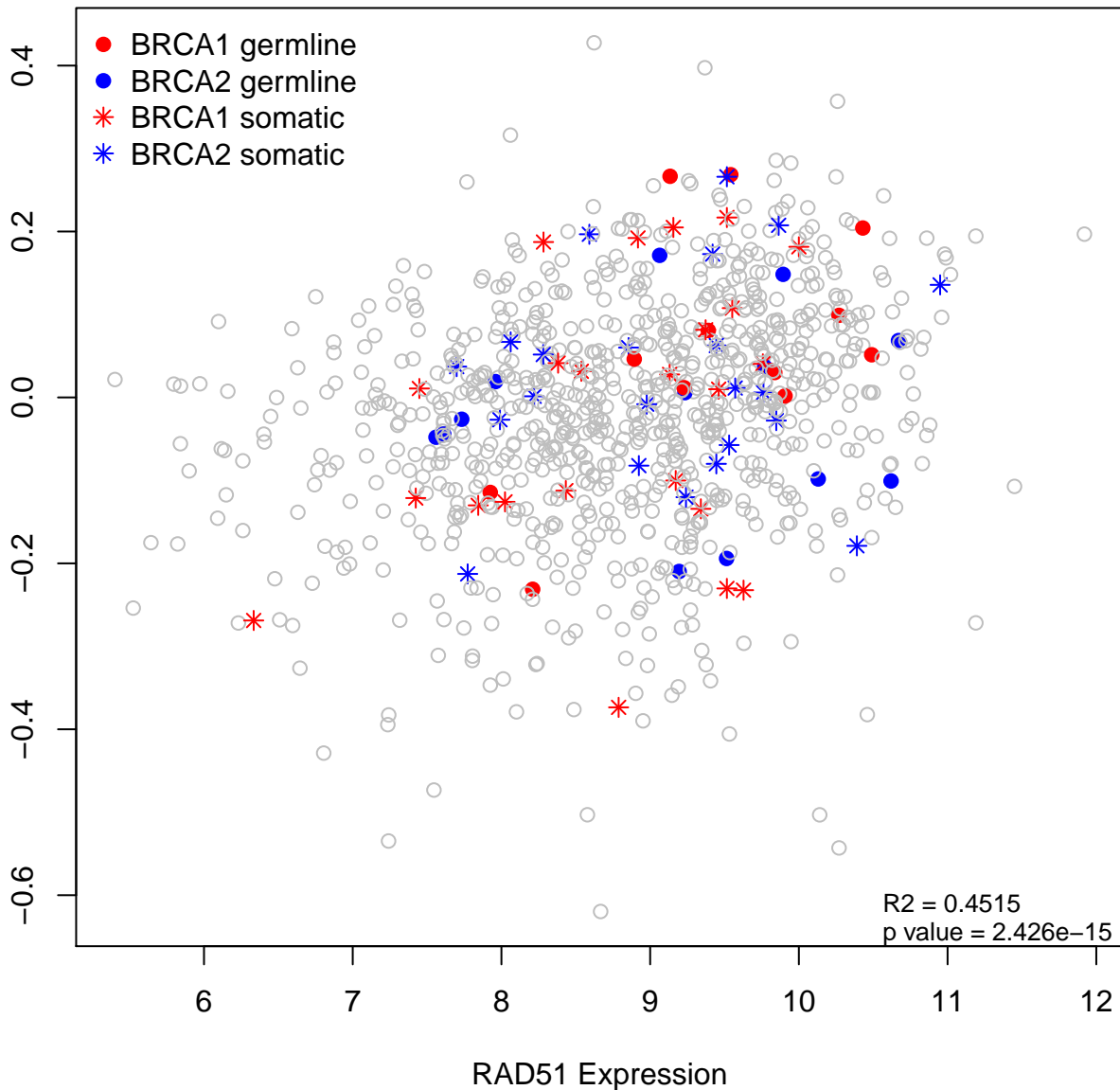


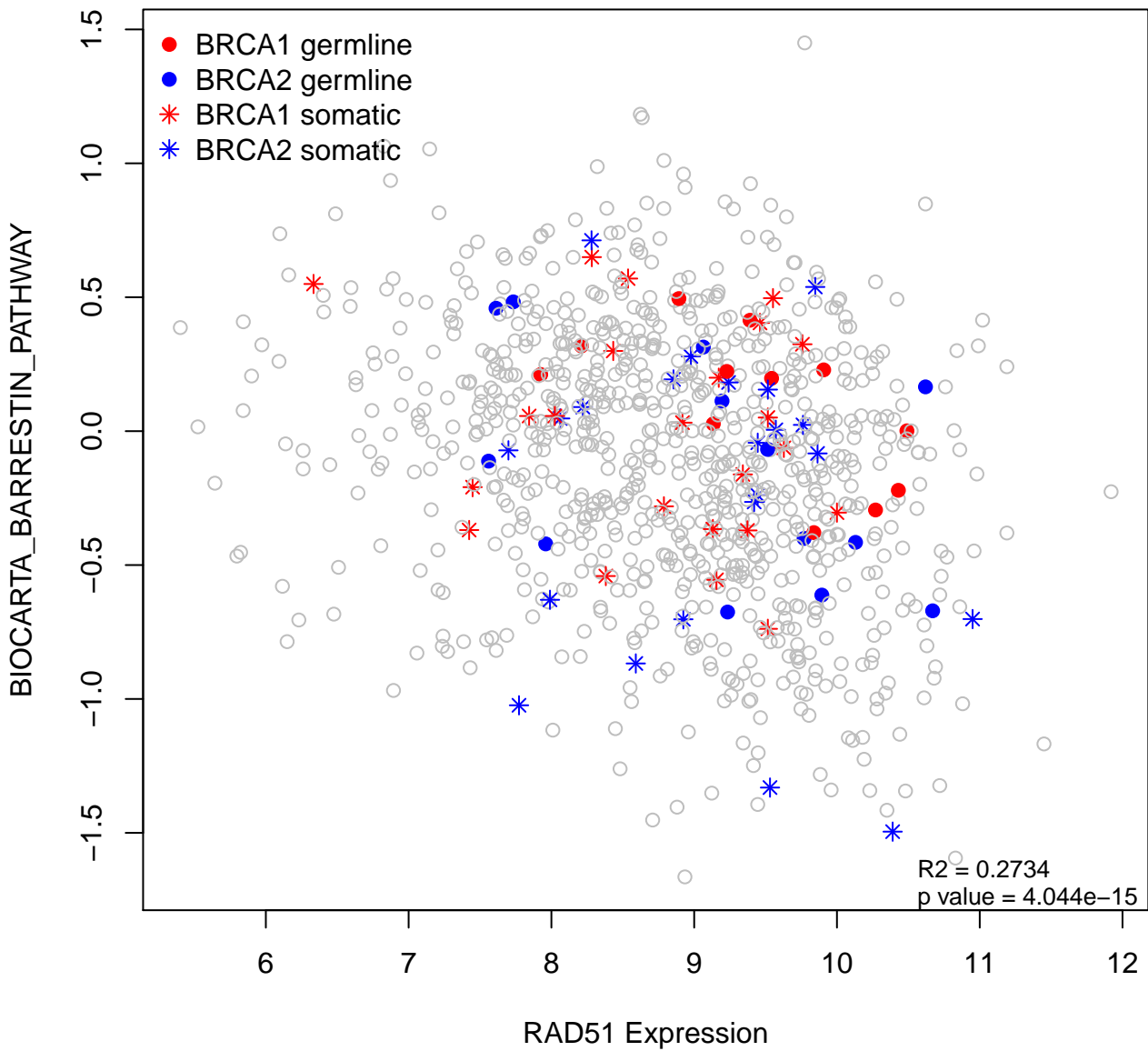


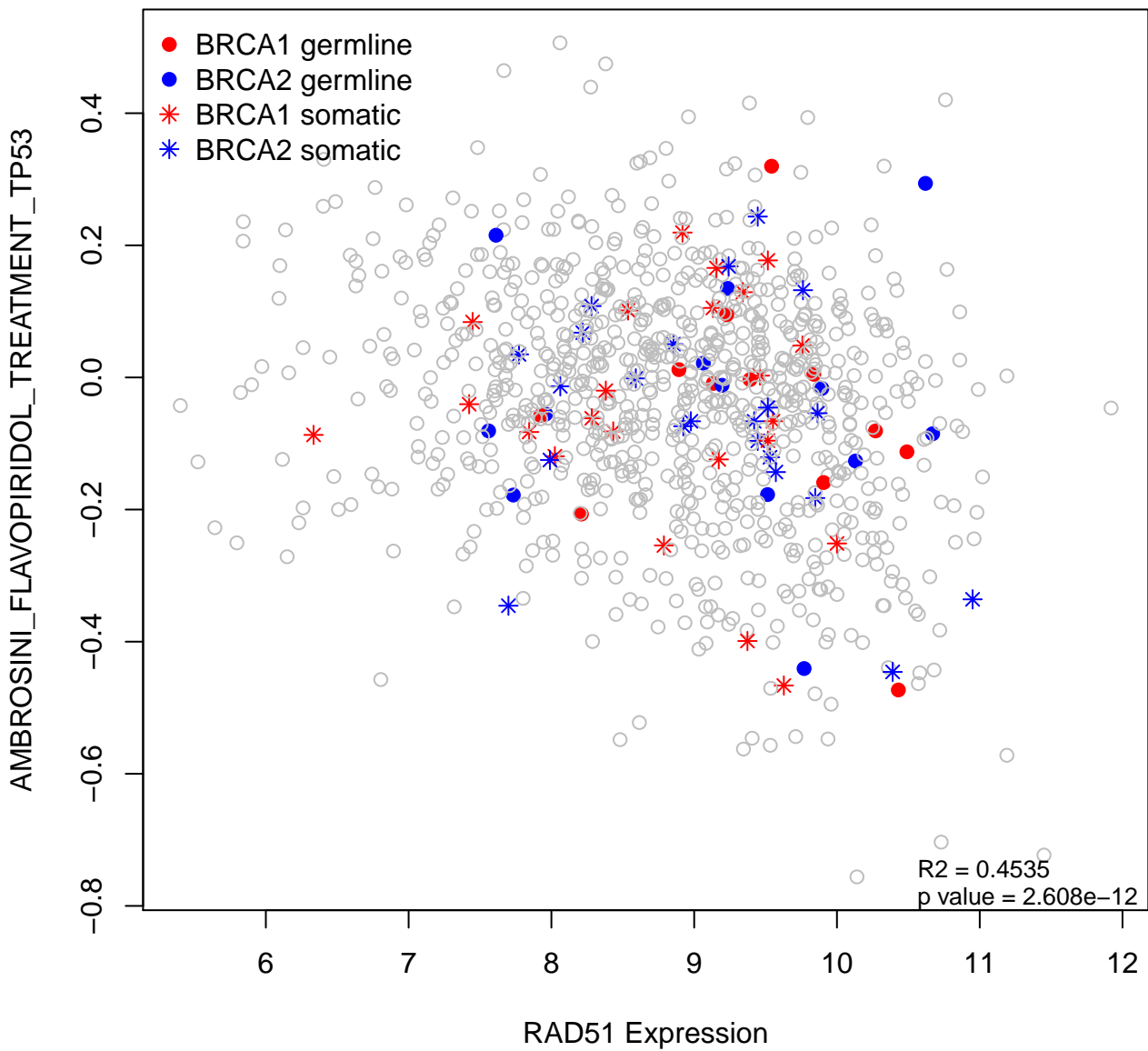
GSE15139_GMCSF_TREATED_VS_UNTREATED_NEUTROPHILS_UP



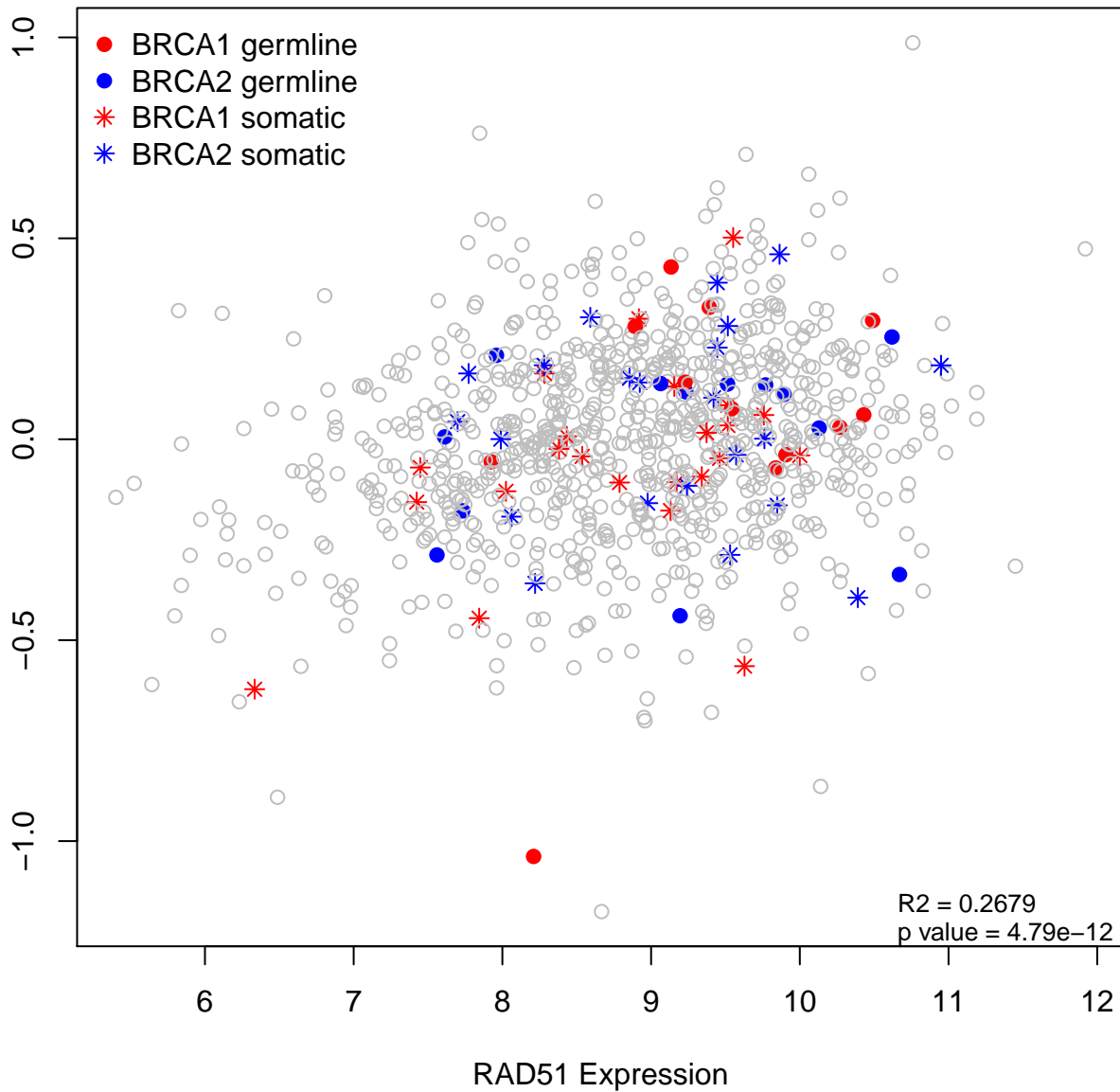
GSE15139_GMCSF_TREATED_VS_UNTREATED_NEUTROPHILS_DN

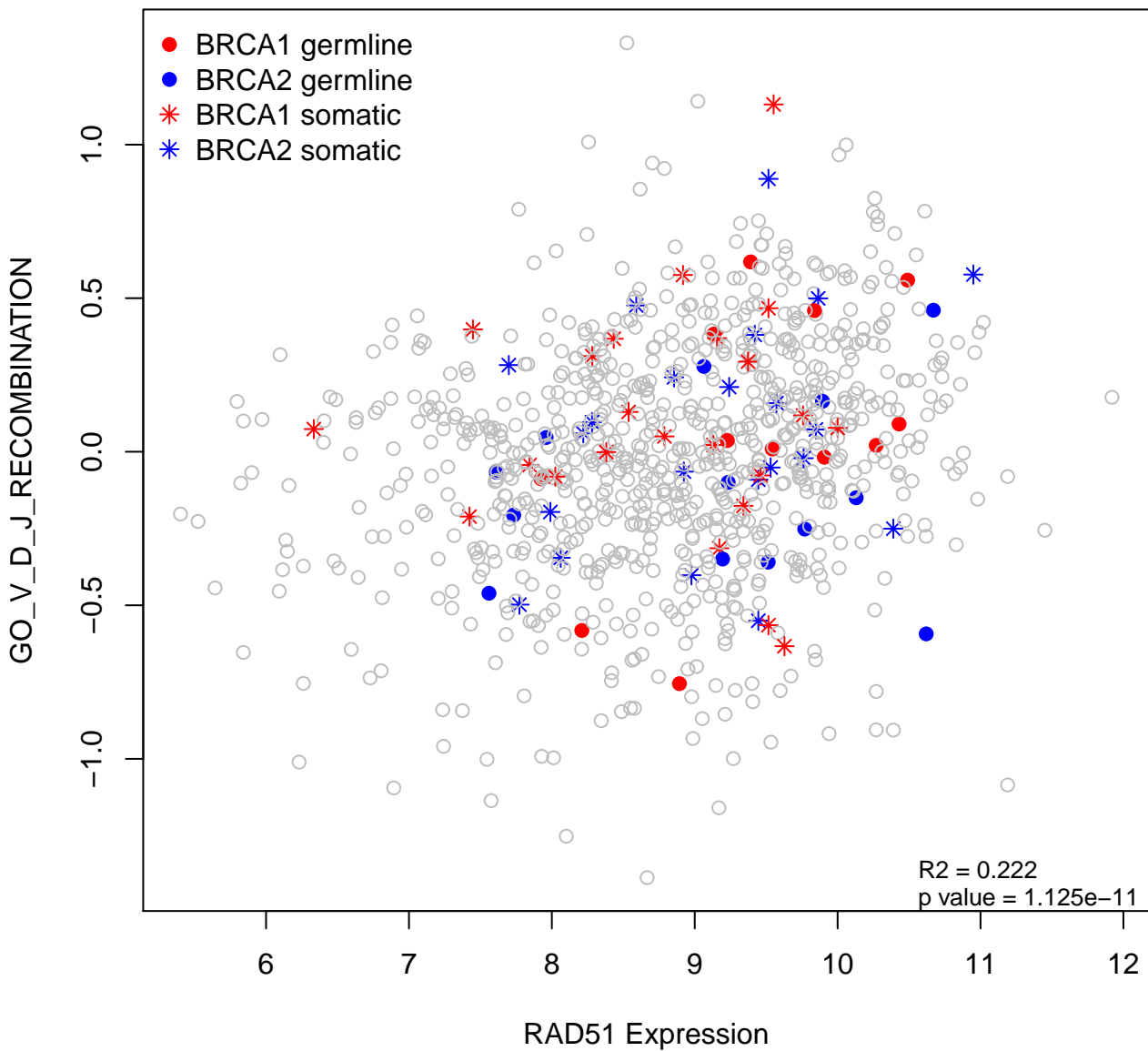




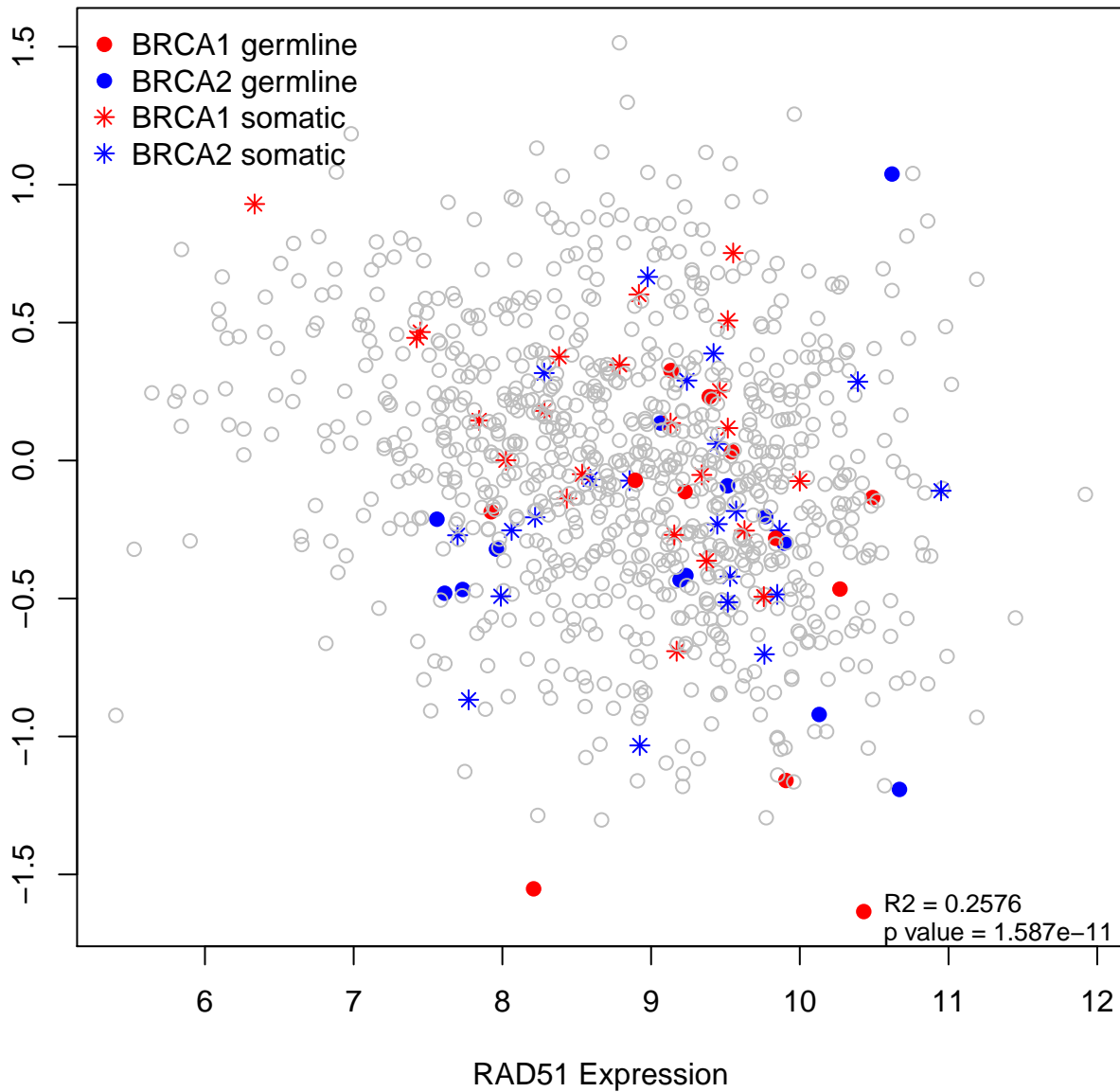


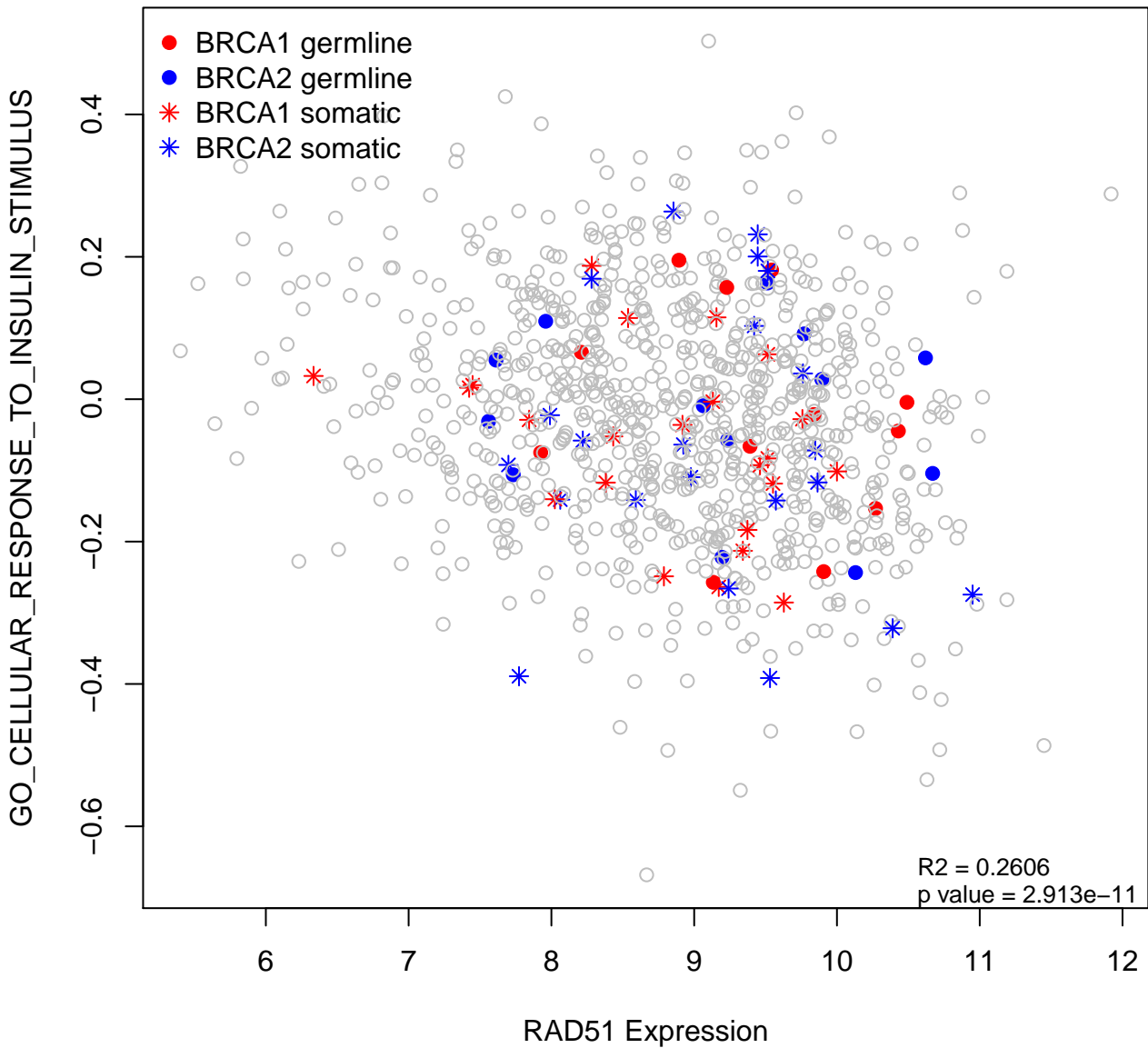
BIOCARTA_AKAPCENTROSOME_PATHWAY

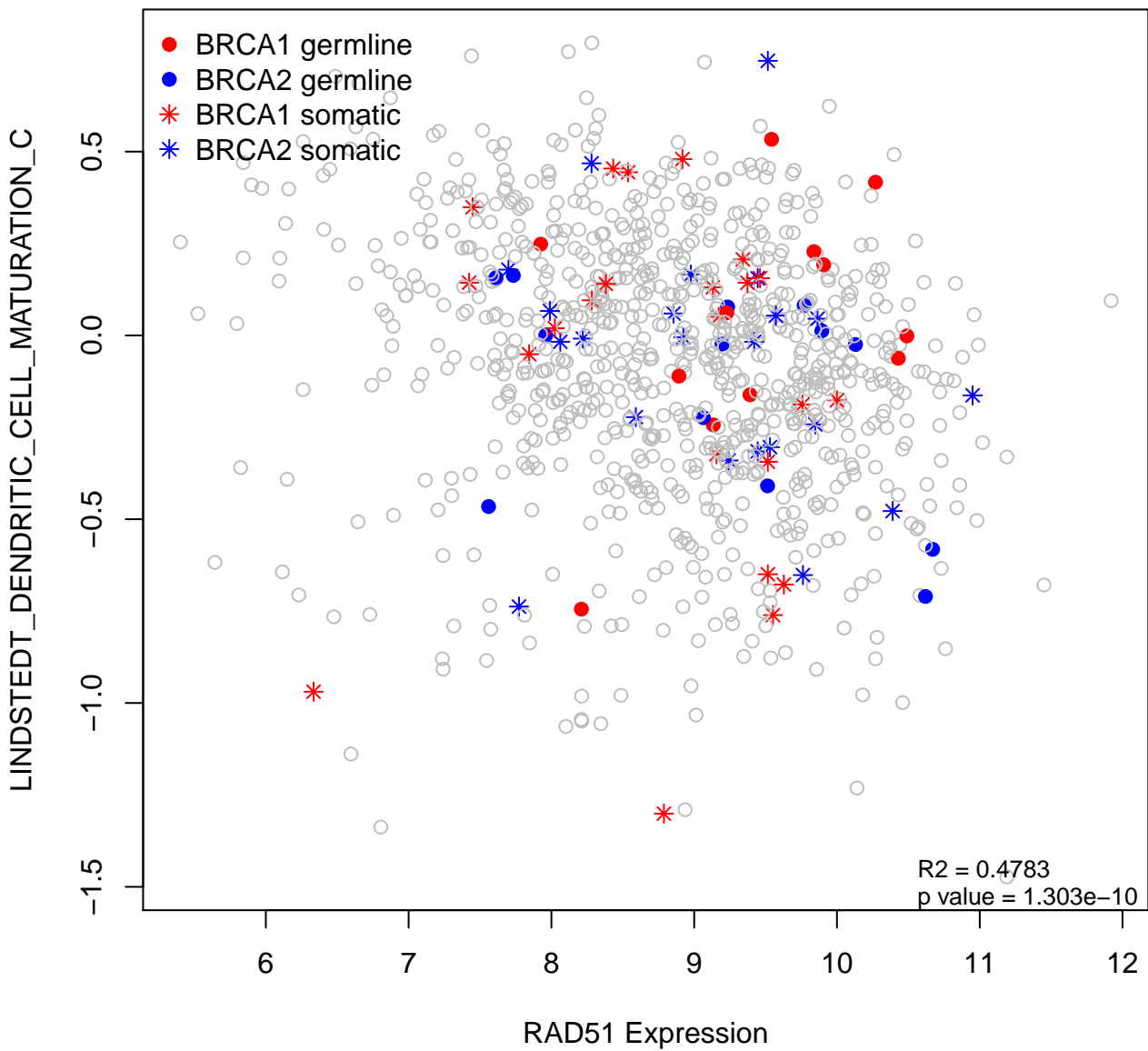


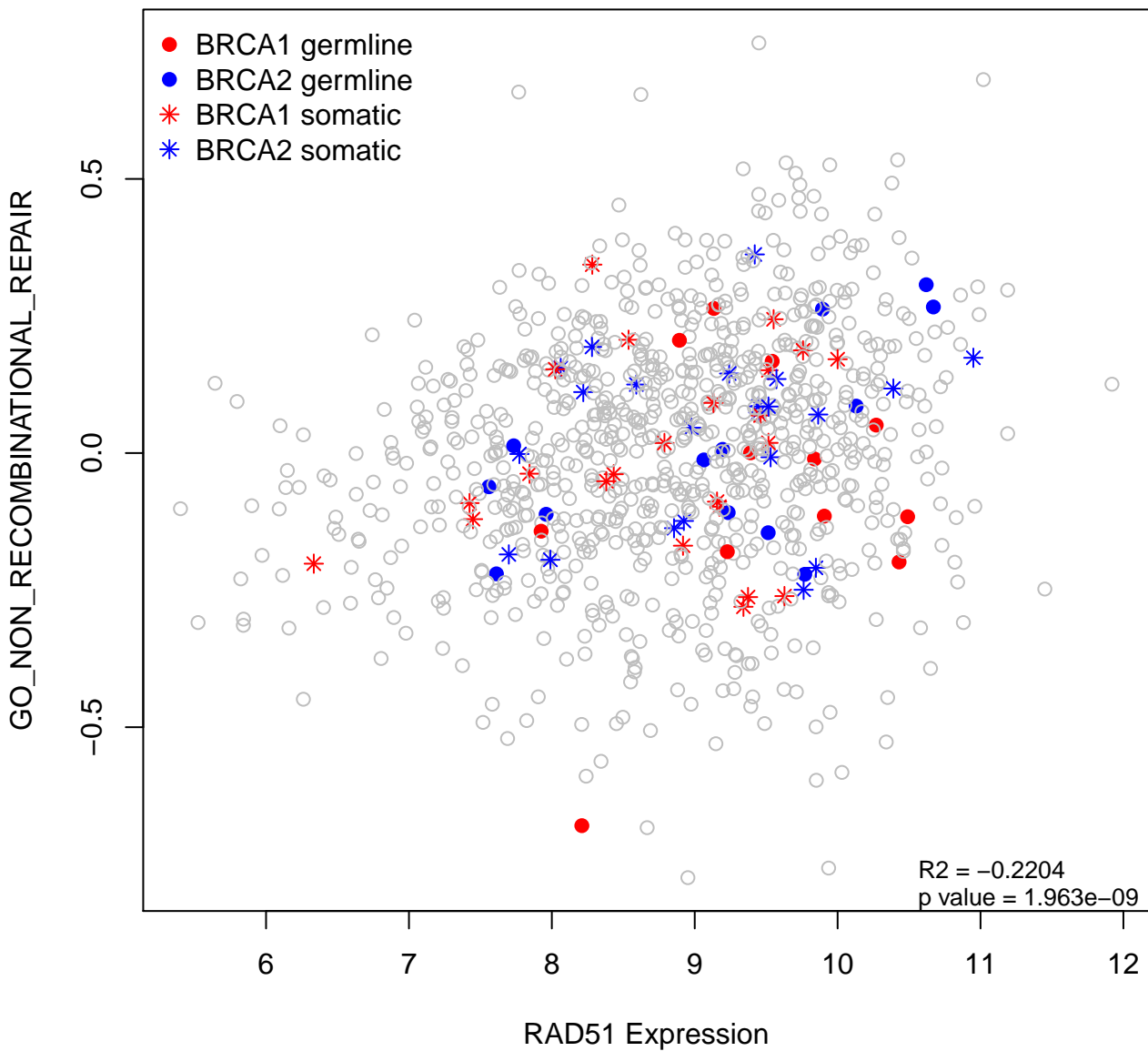


JIANG_CORE_DUPLICATION_GENES









LINDSTEDT_DENDRITIC_CELL_MATURATION_A

- BRCA1 germline
- BRCA2 germline
- * BRCA1 somatic
- * BRCA2 somatic

1

0

-1

6

7

8

9

10

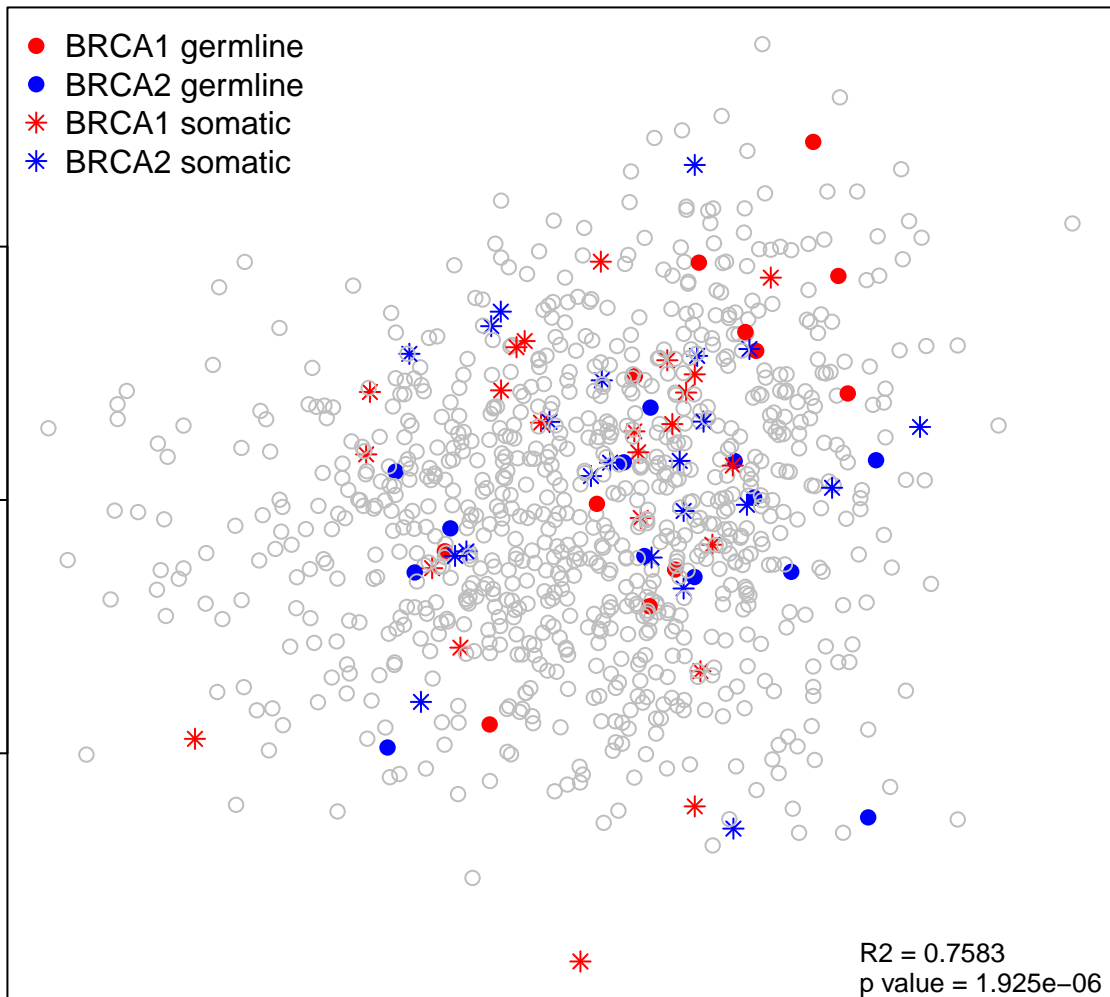
11

12

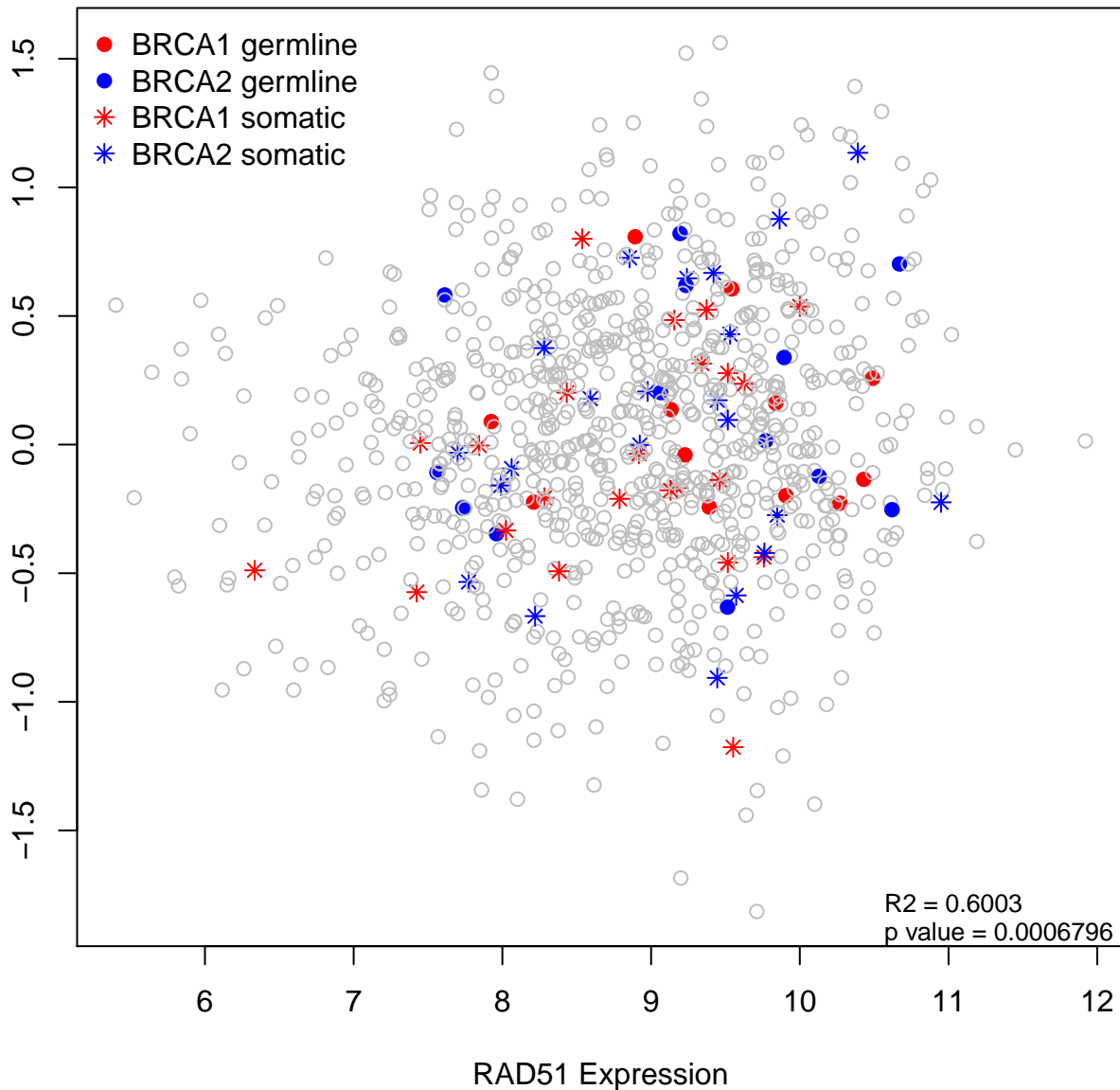
RAD51 Expression

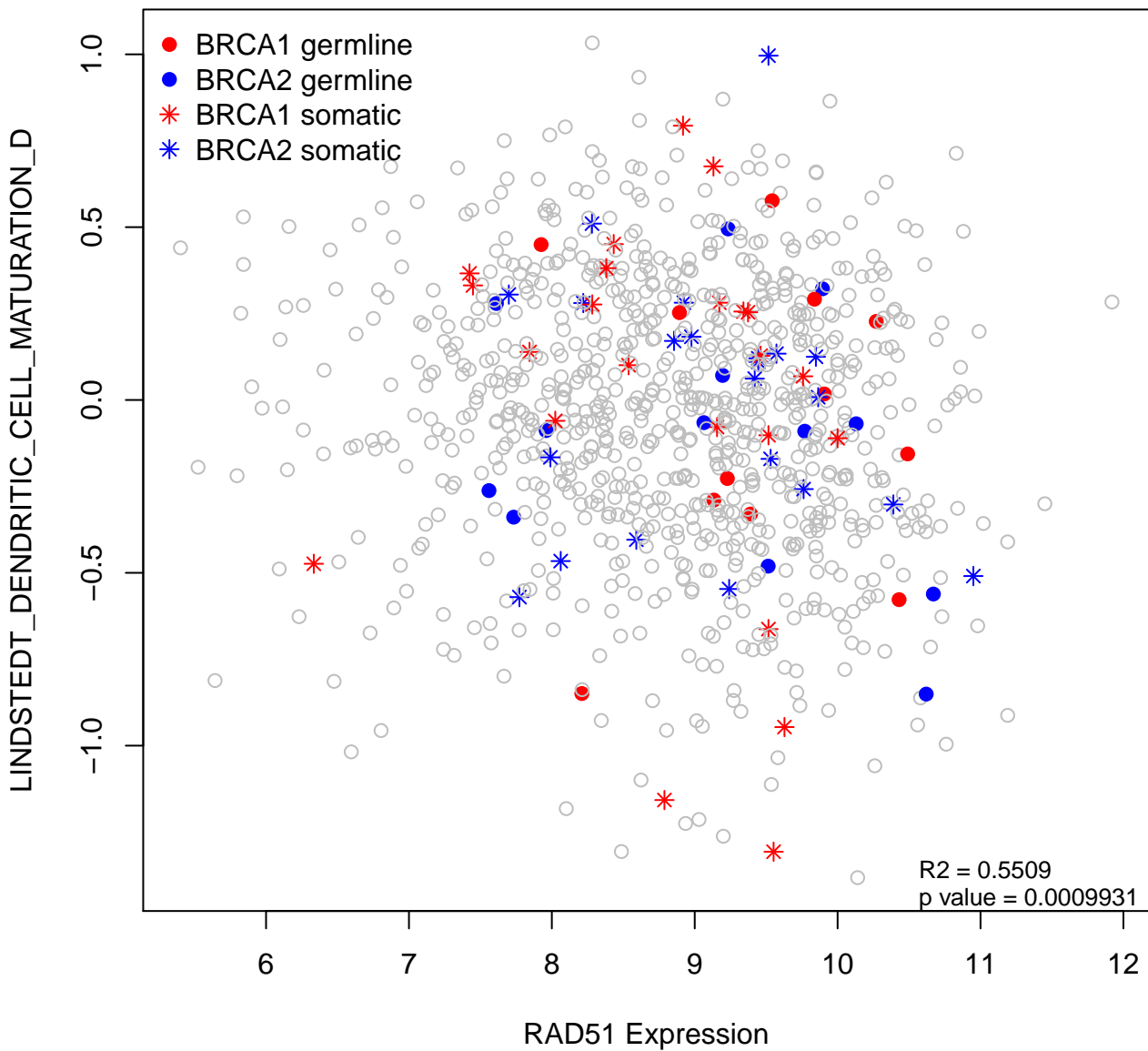
$R^2 = 0.7583$

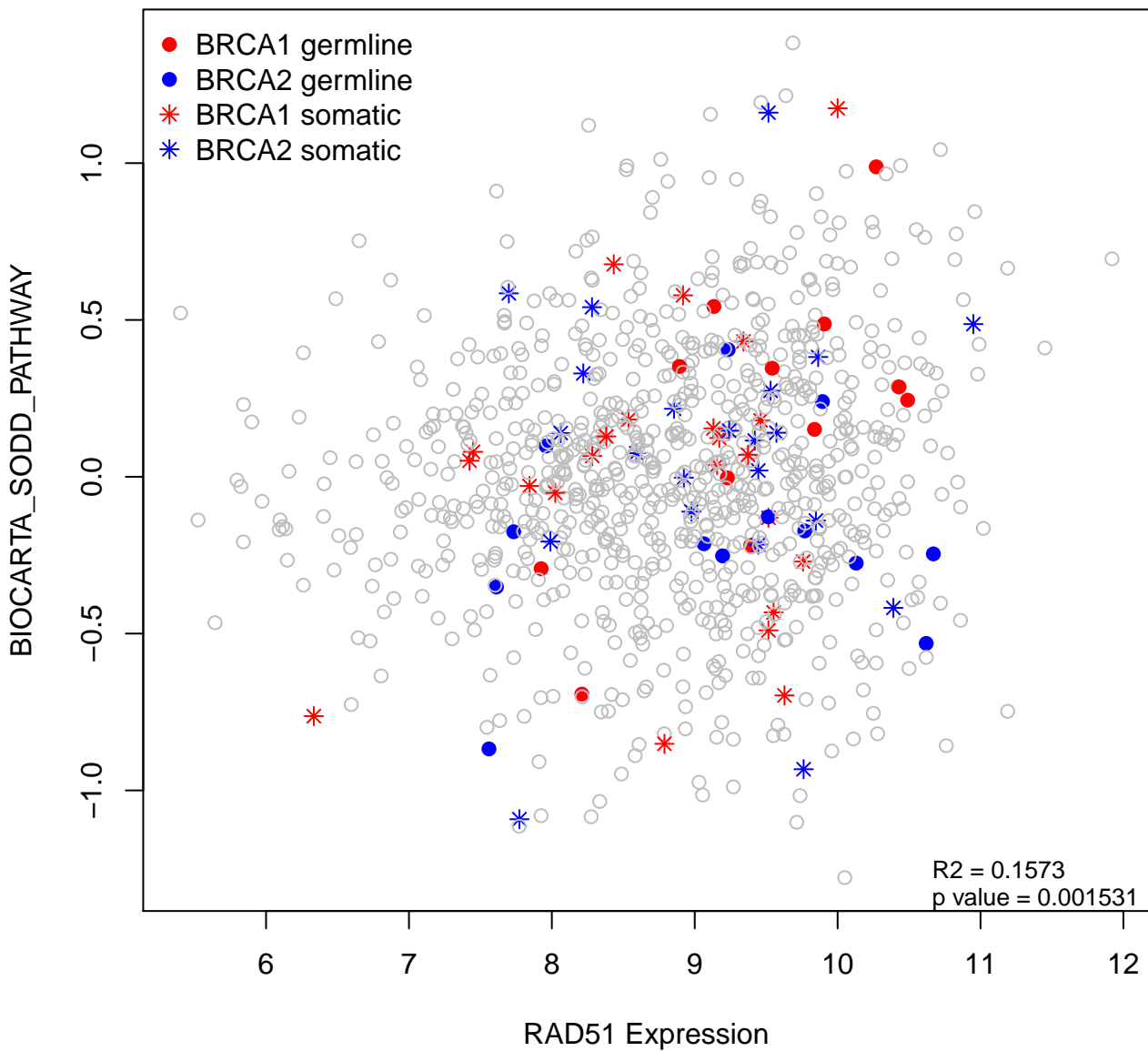
$p \text{ value} = 1.925e-06$

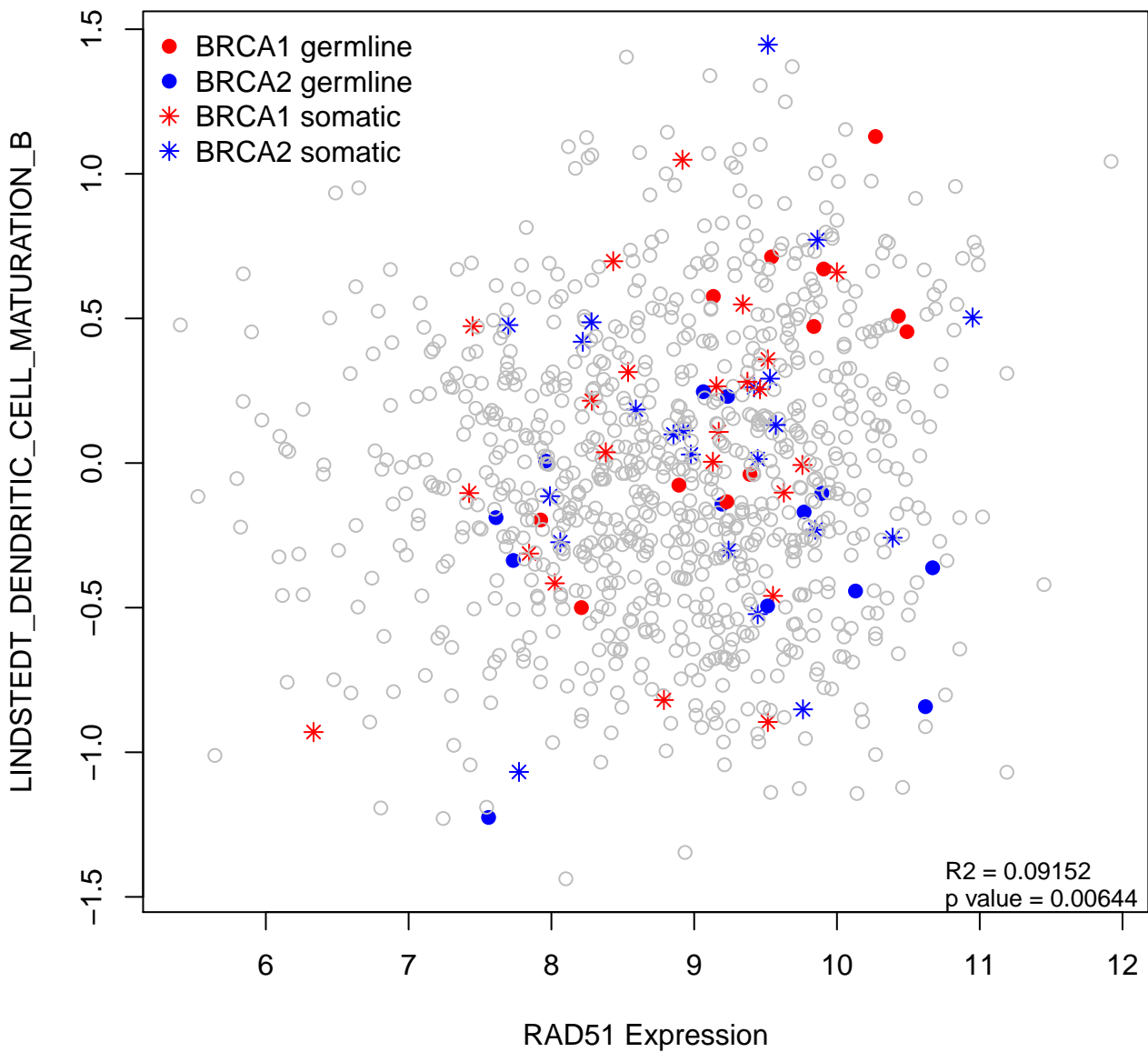


BALLIF_DEVELOPMENTAL_DISABILITY_P16_P12_DELETION

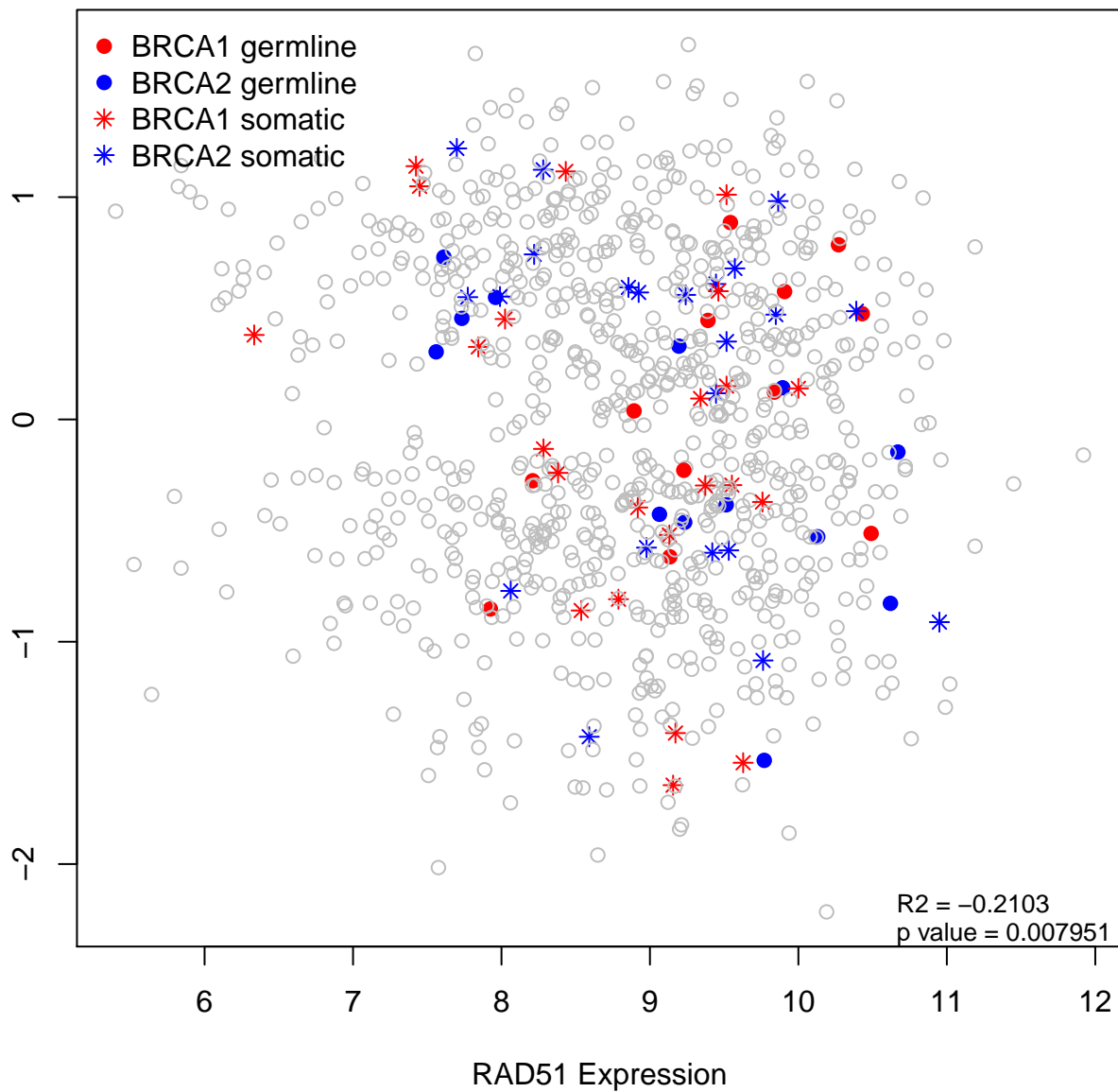


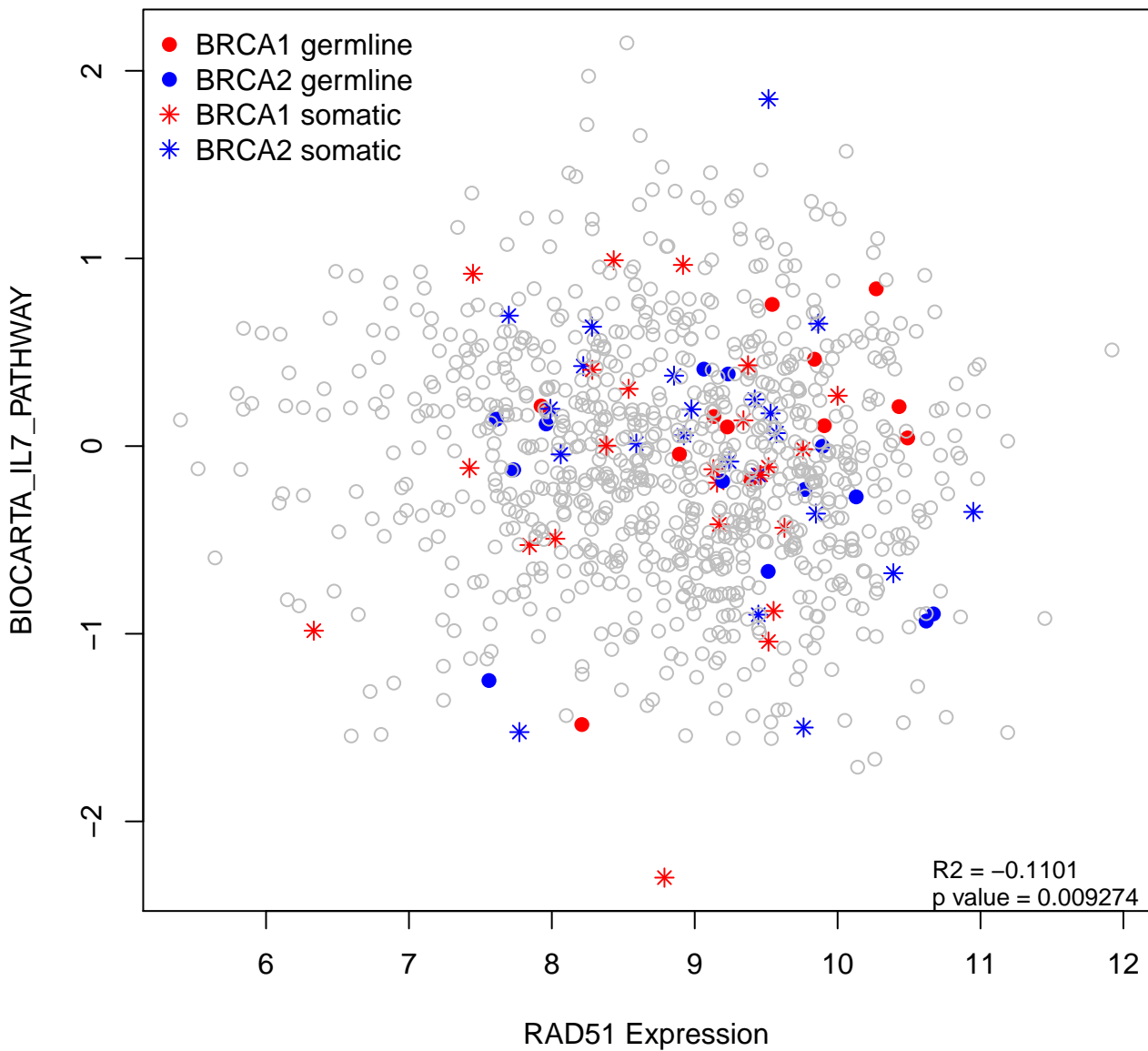


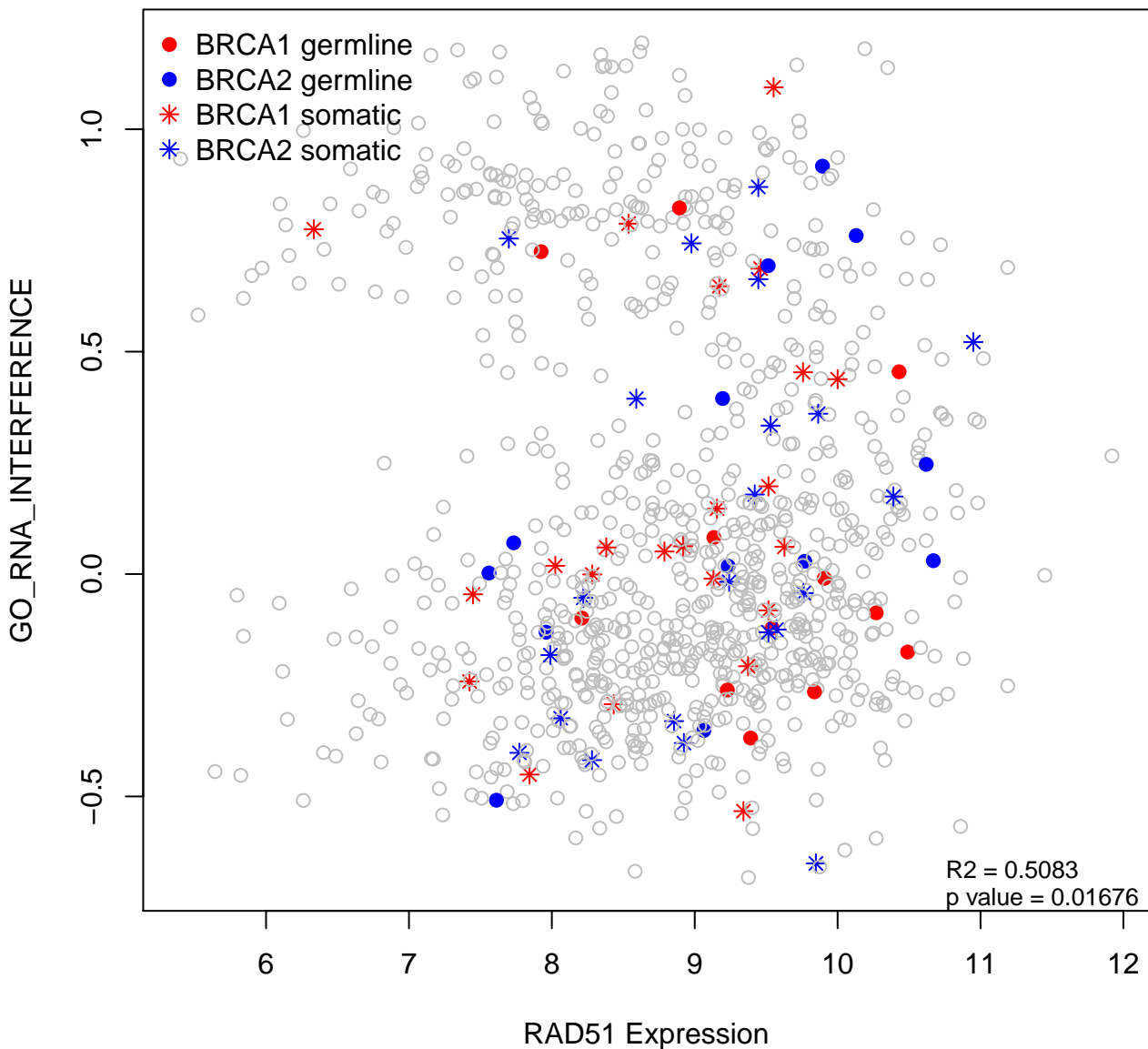




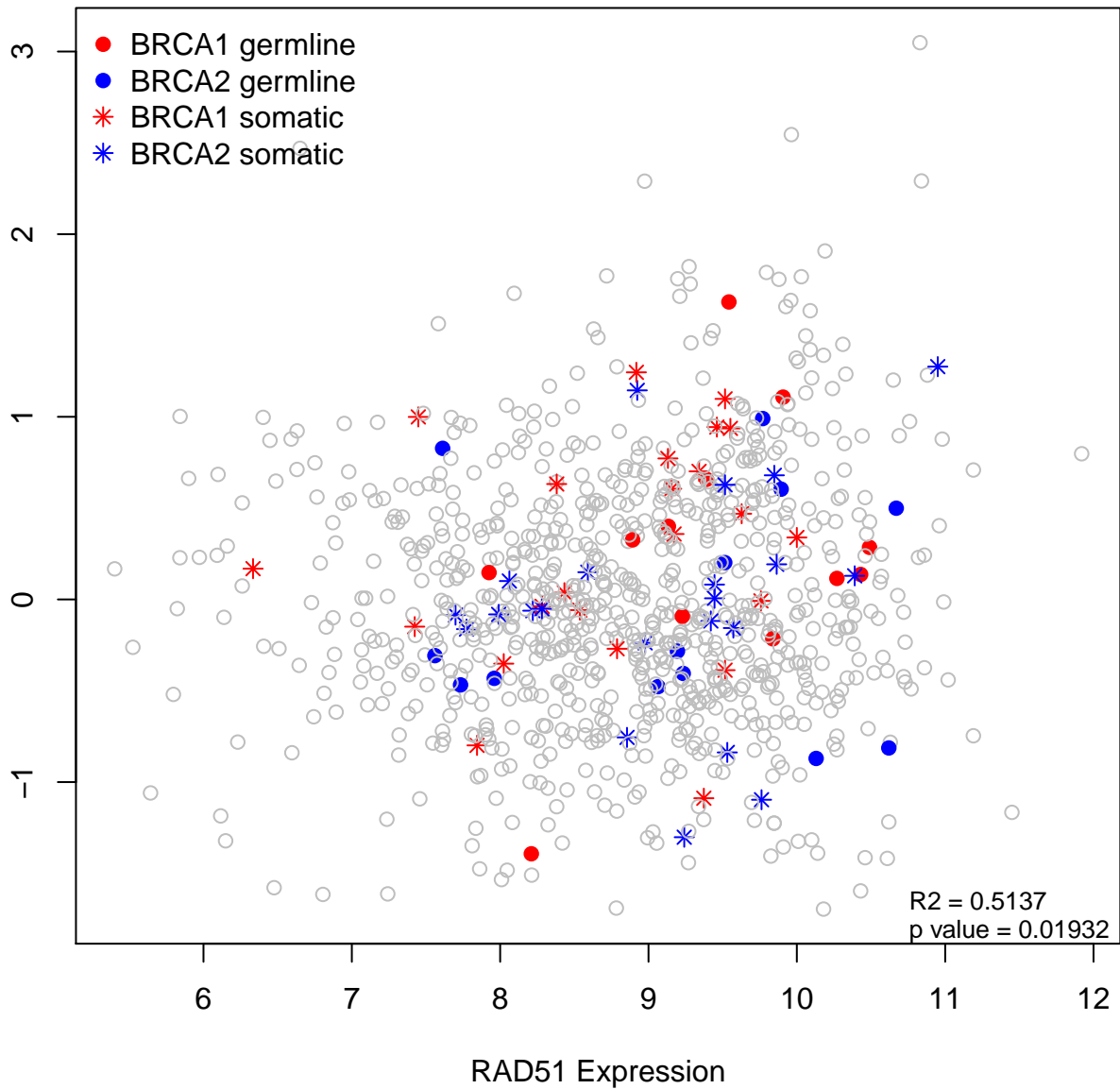
E_LOCALIZATION_TO_NUCLEAR_ENVELOPE_INVOLVED_IN_HOMOLOGOUS_CHROMOS



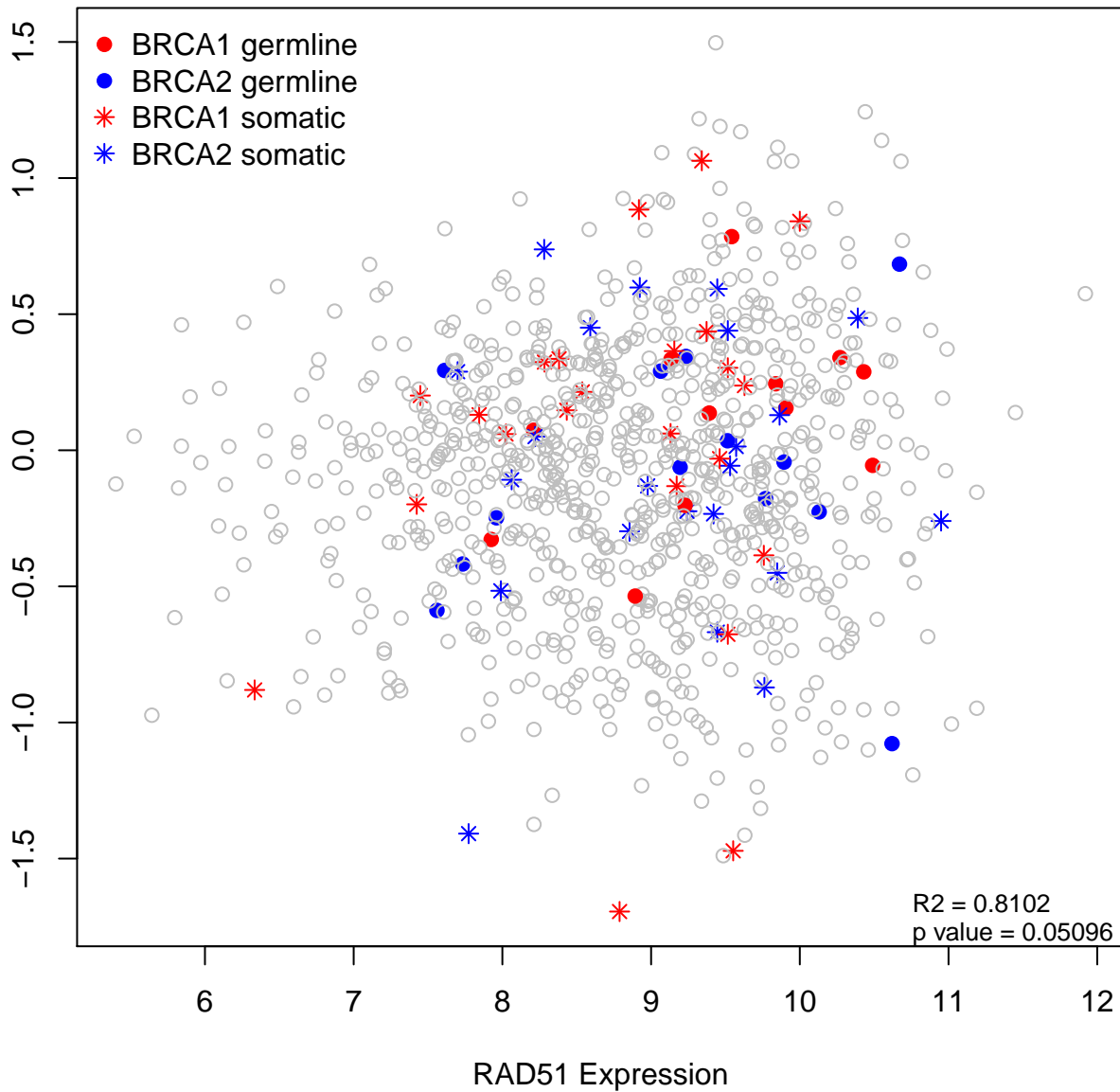


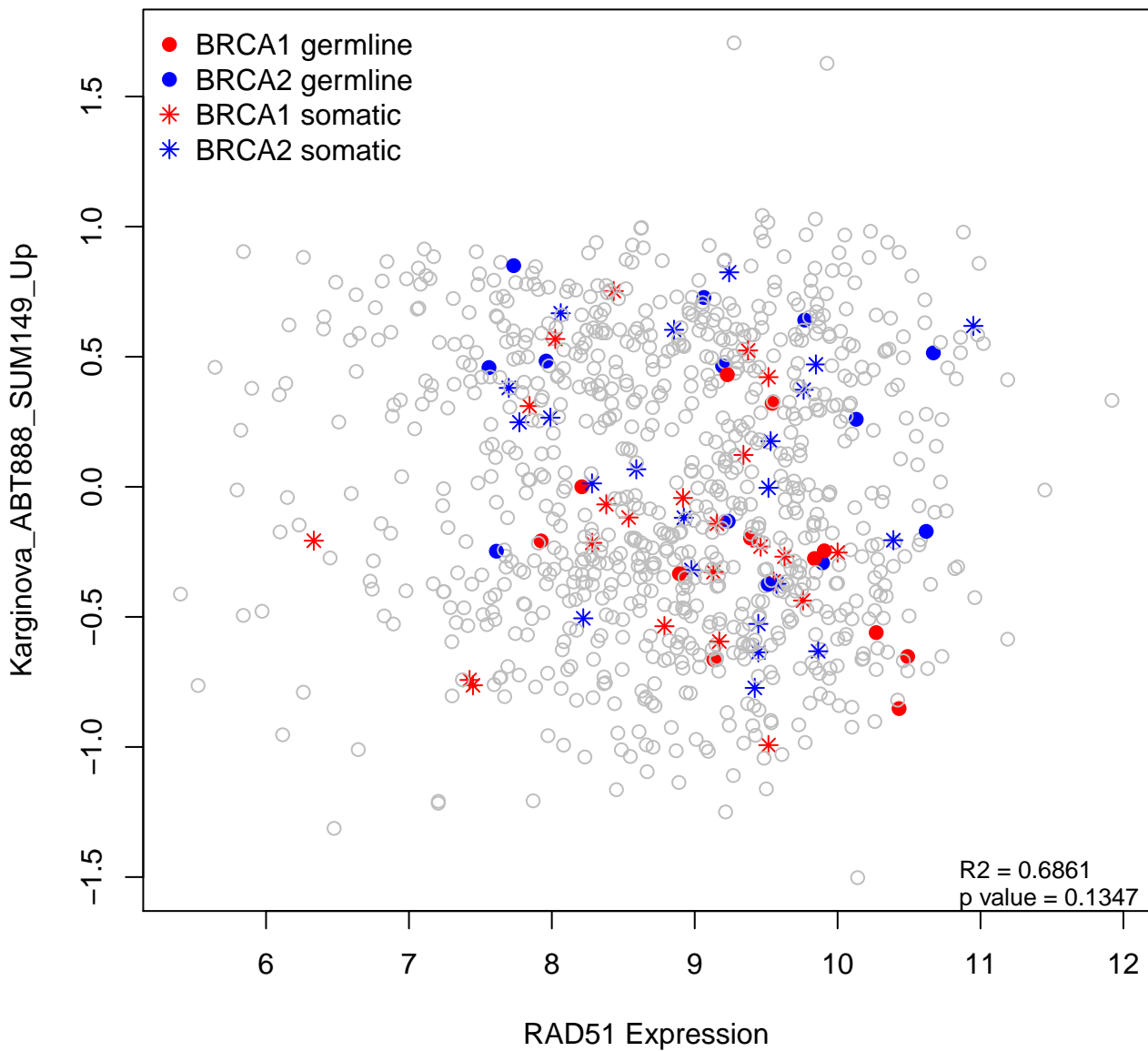


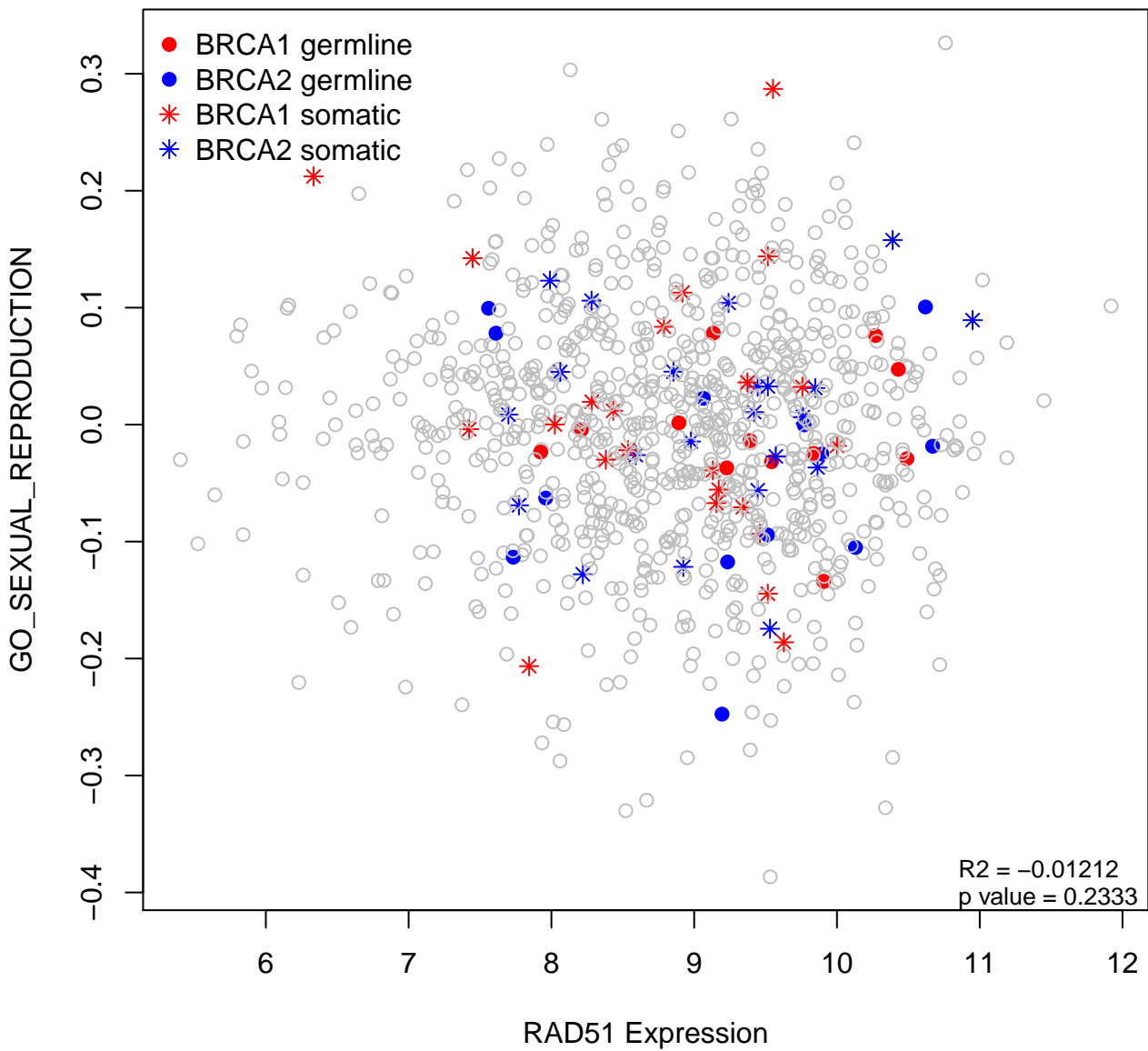
Karginova_ABT888_MDAMB436_Down



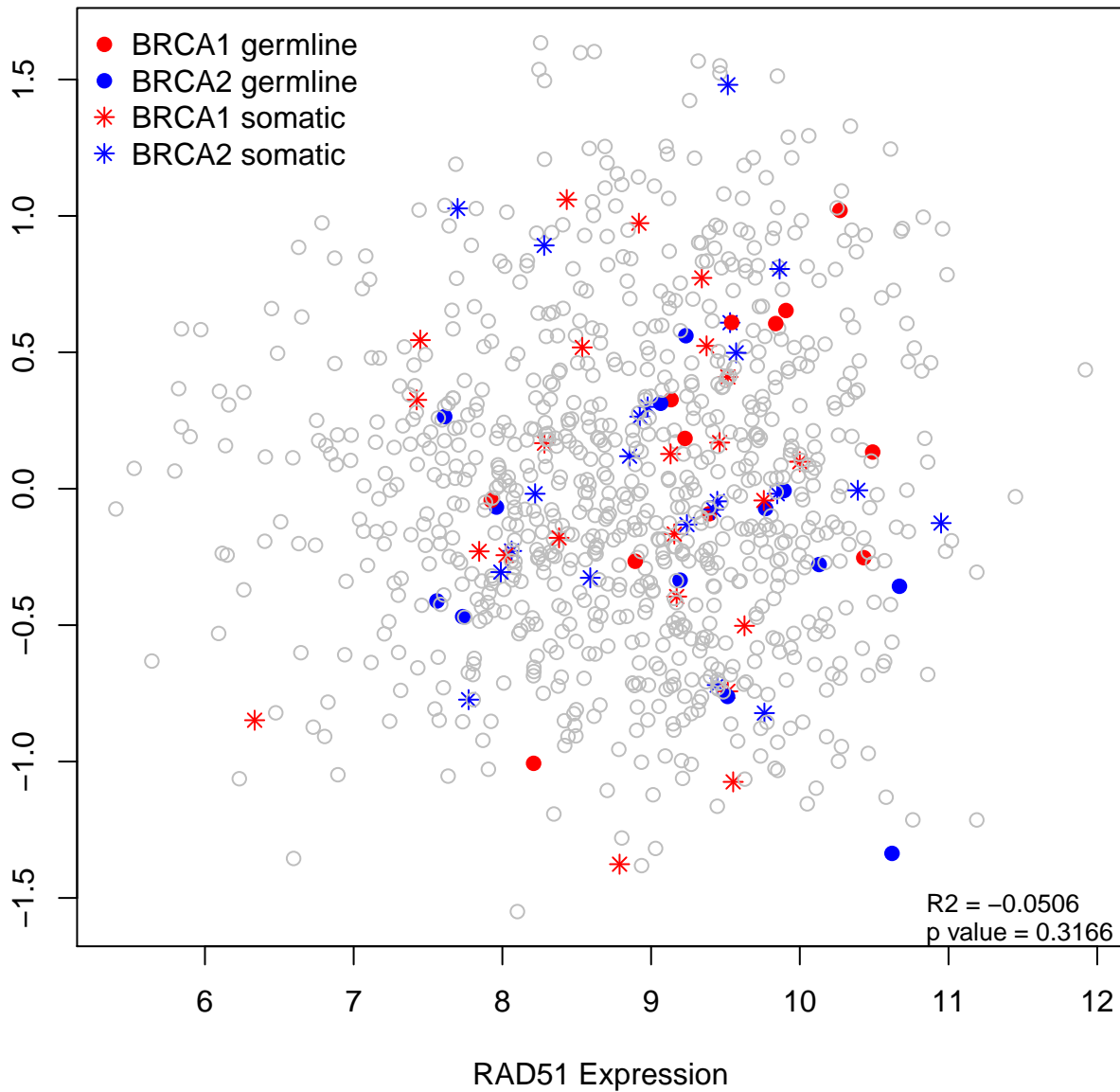
Karginova_ABT888_MDAMB436_Up

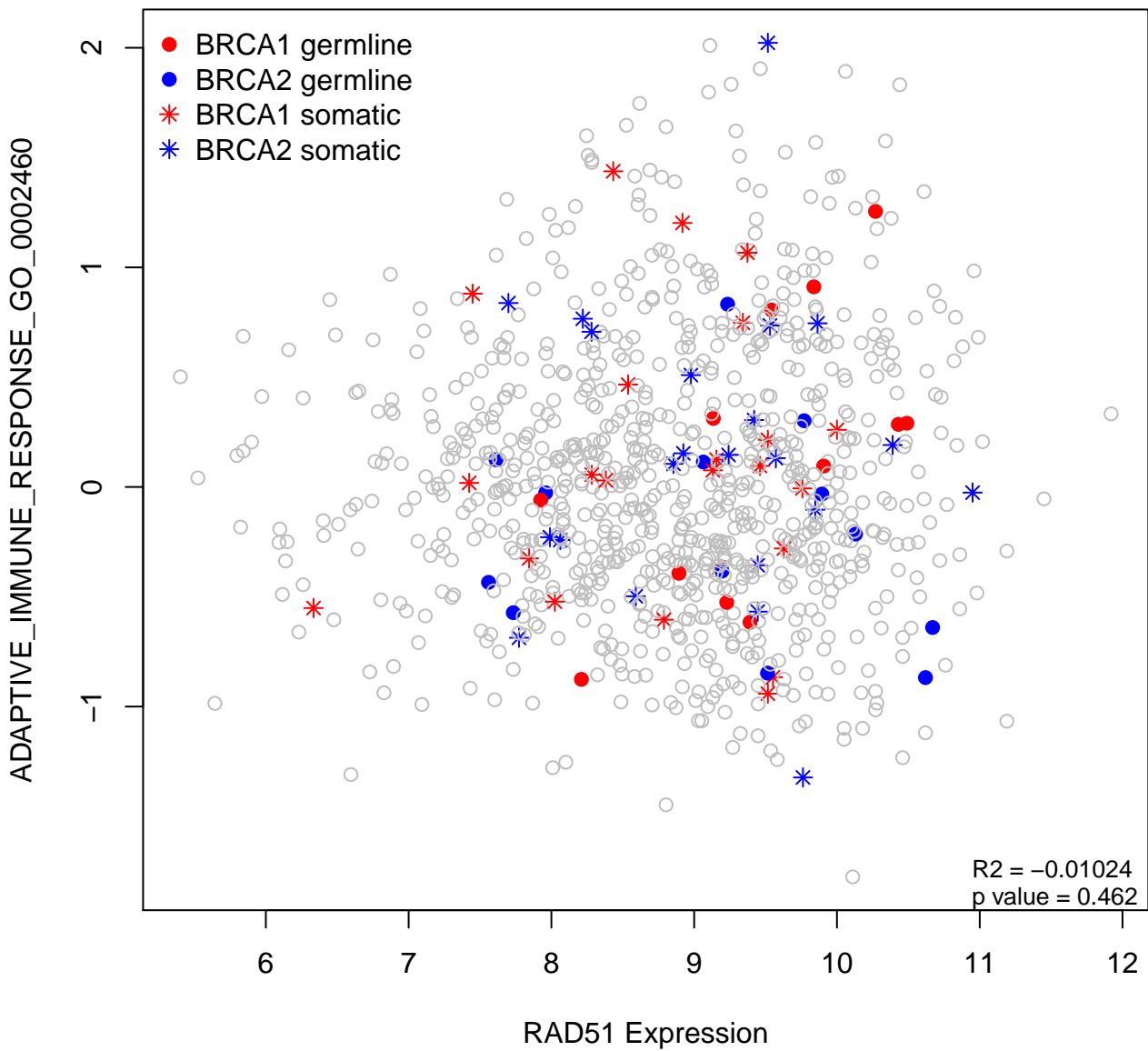


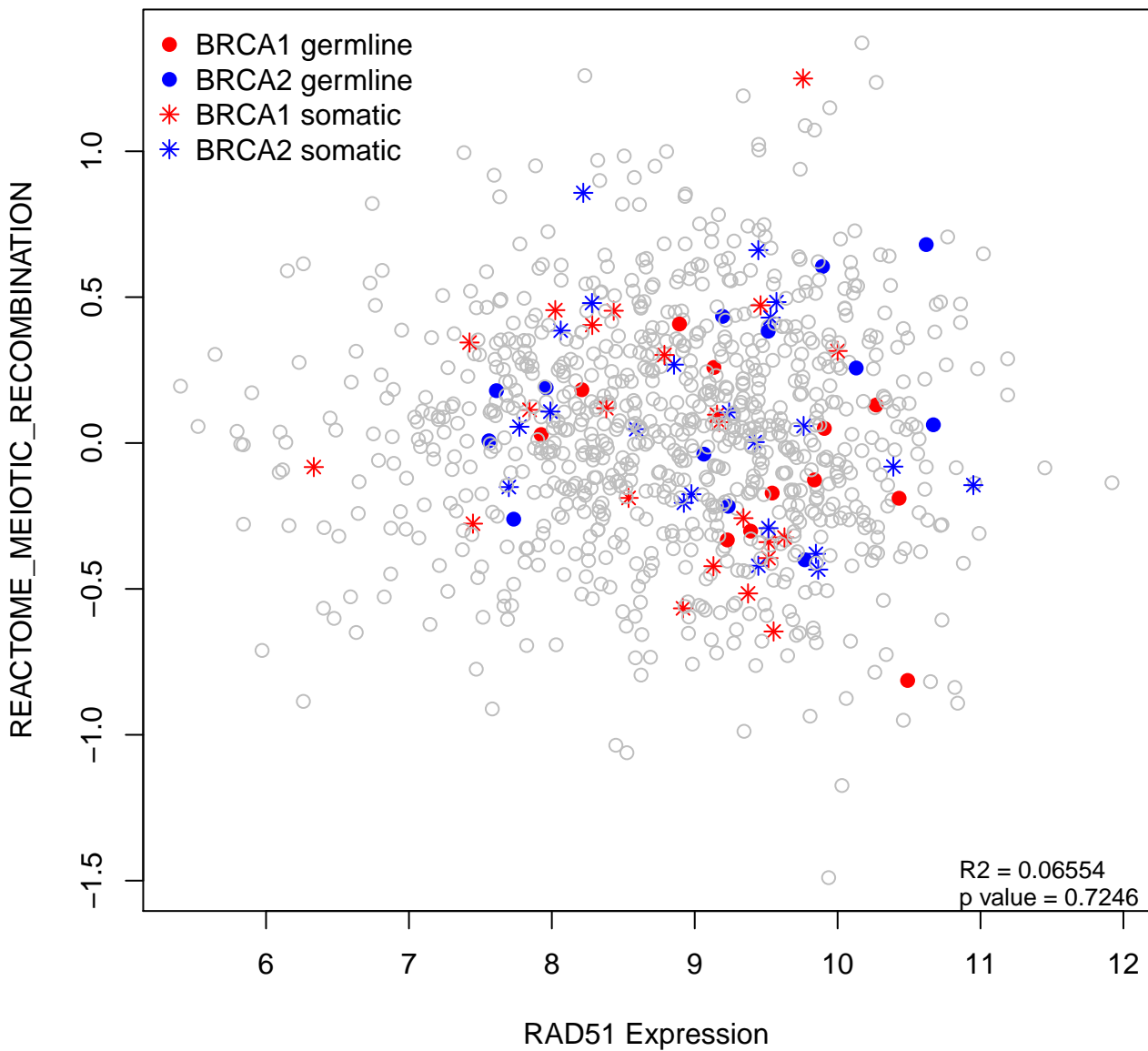




BASED_ON_SOMATIC_RECOMBINATION_OF_IMMUNE_RECEPTORS_BUILT_FROM_IMM







Karginova_ABT888_SUM149_Down

