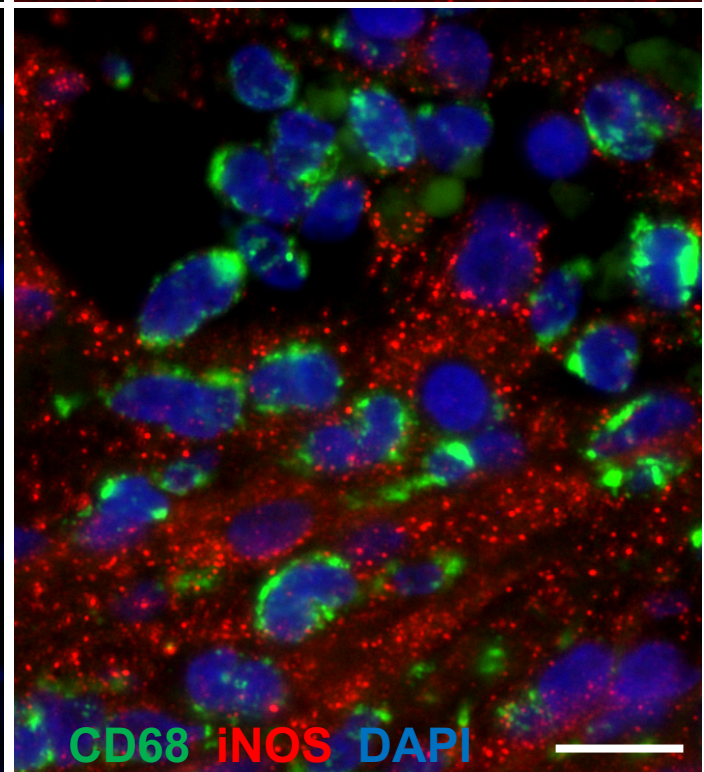
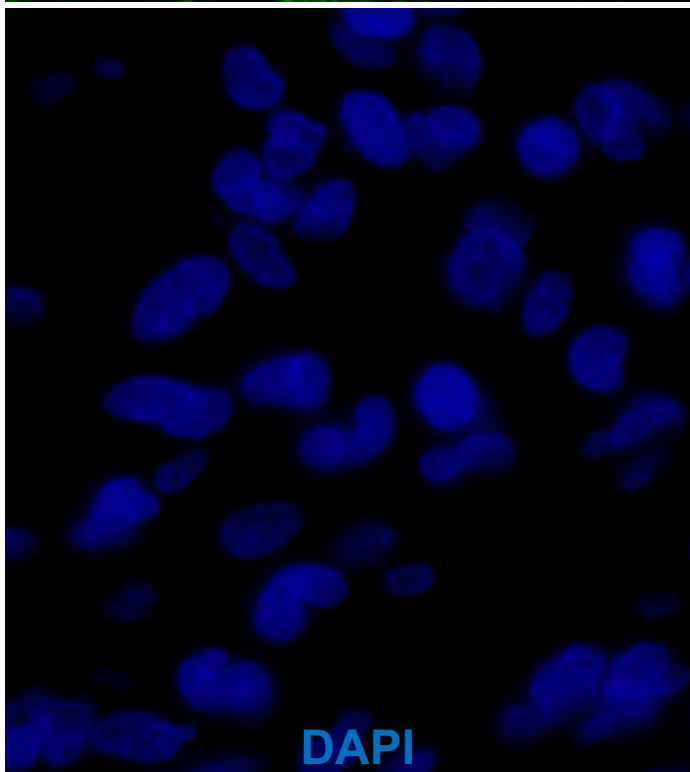
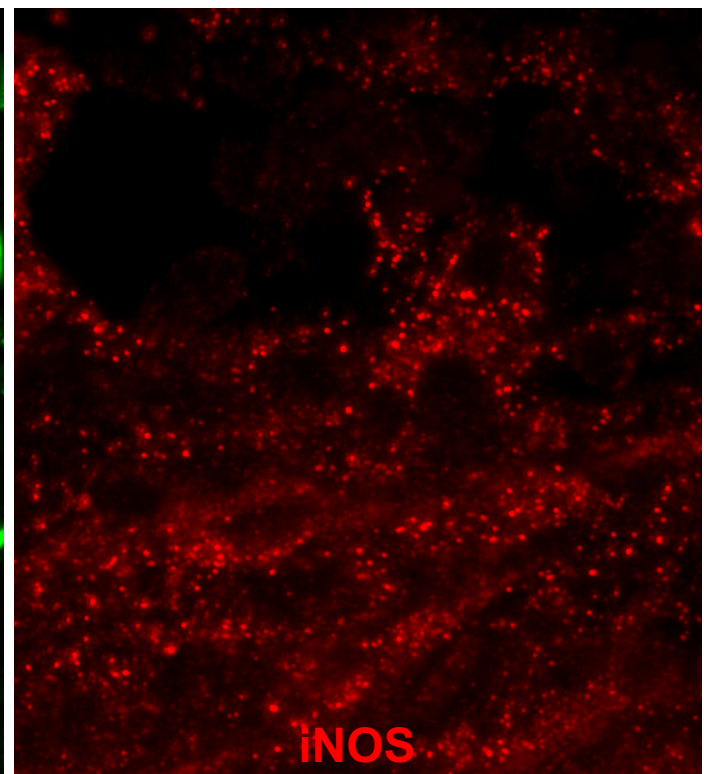
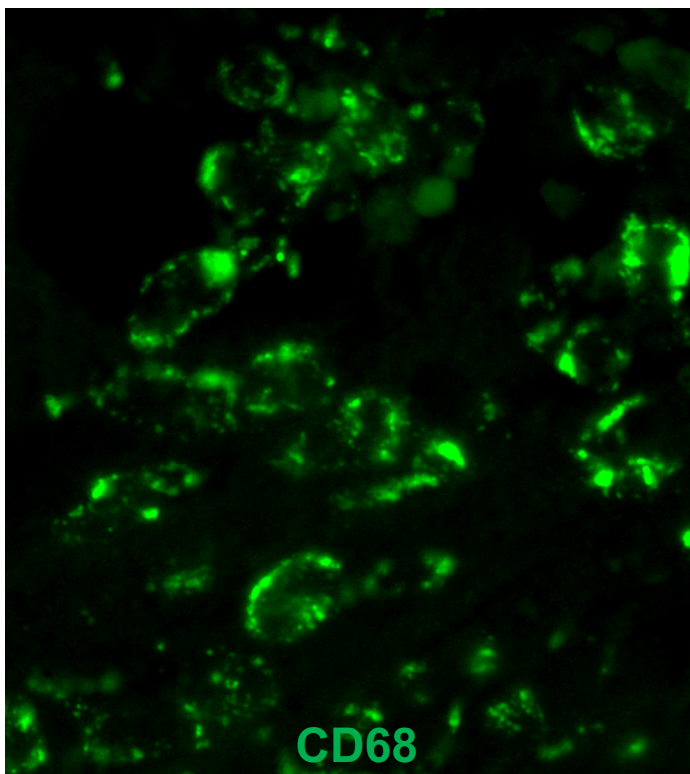
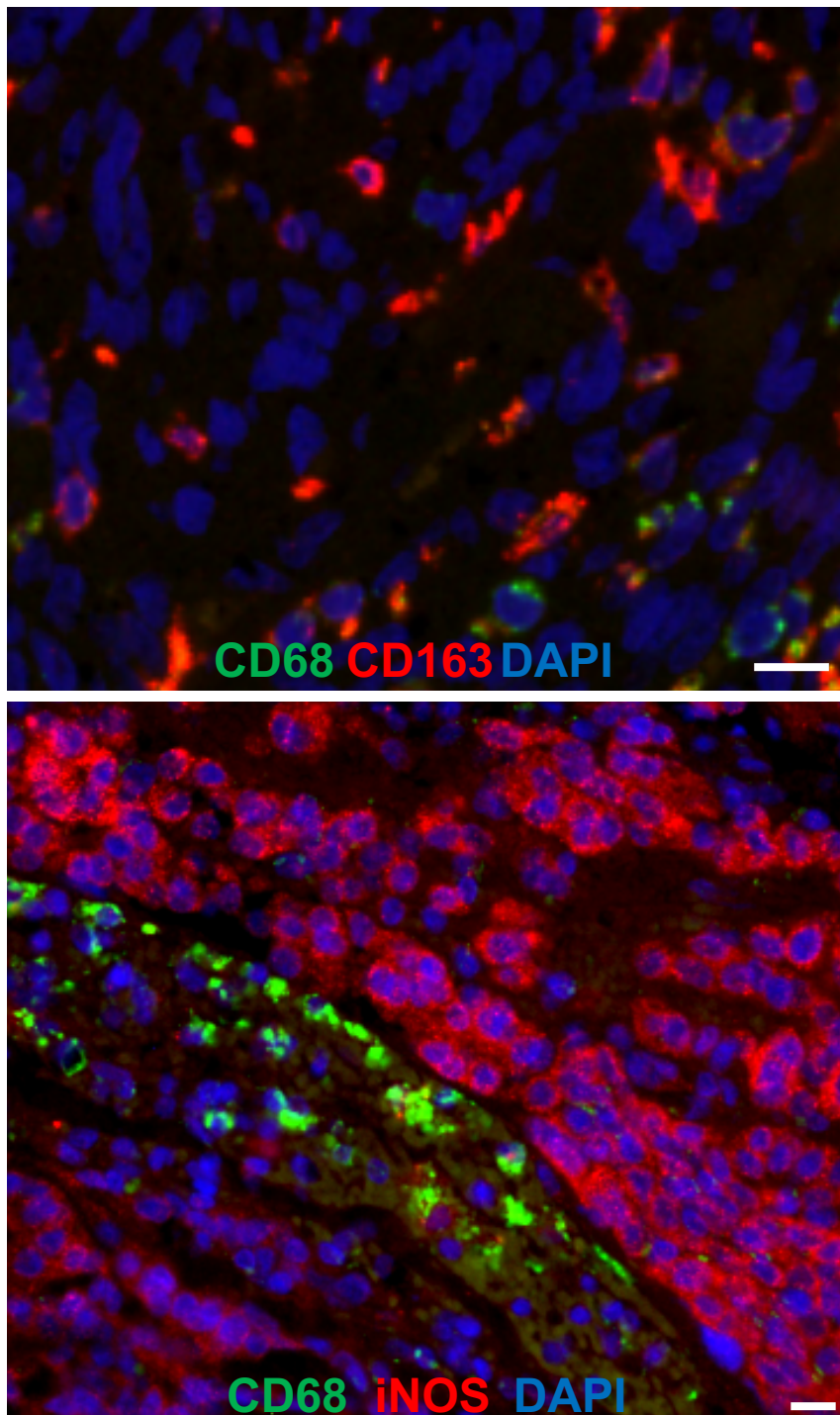


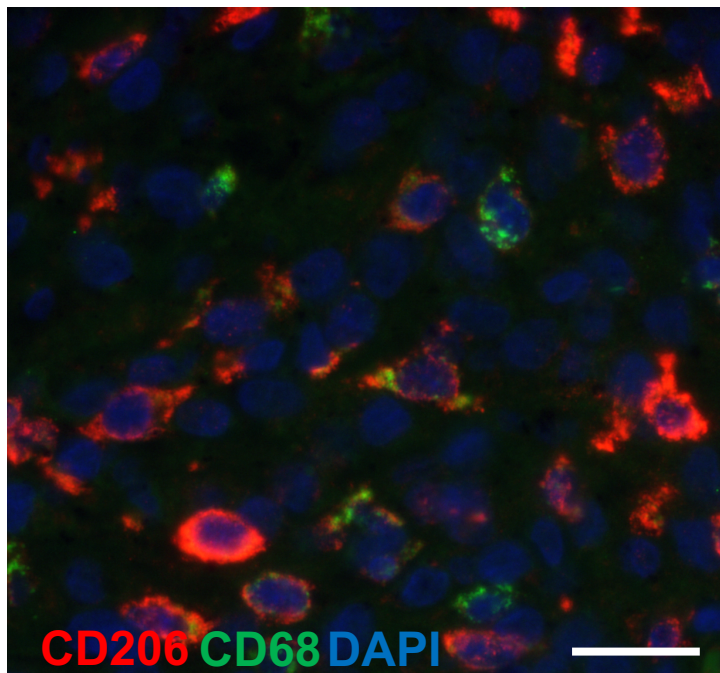
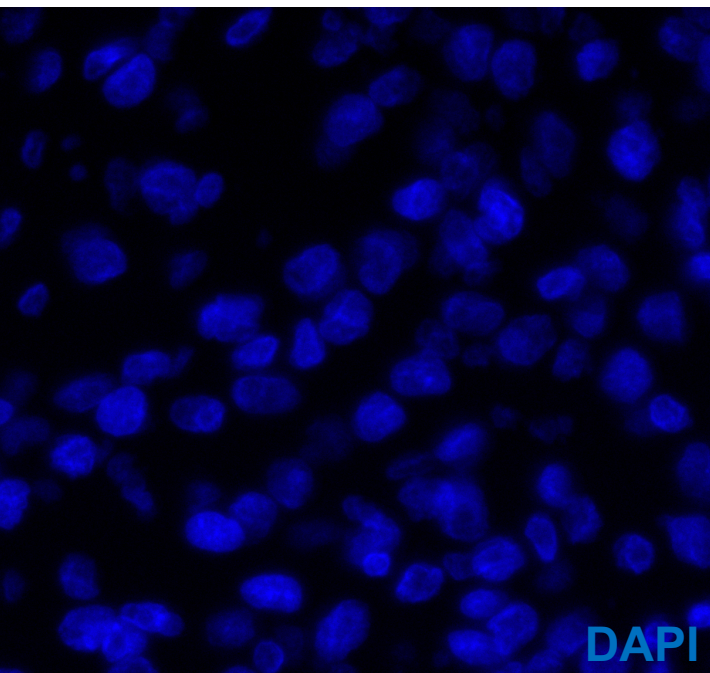
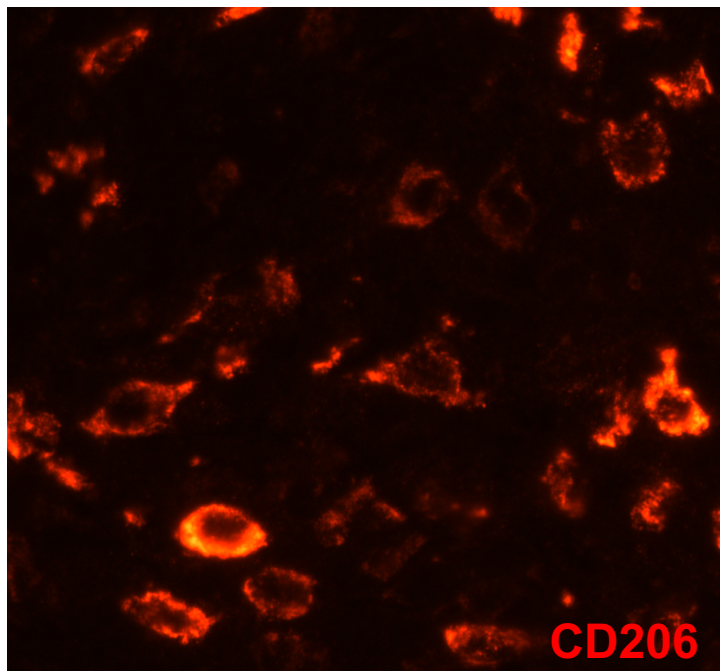
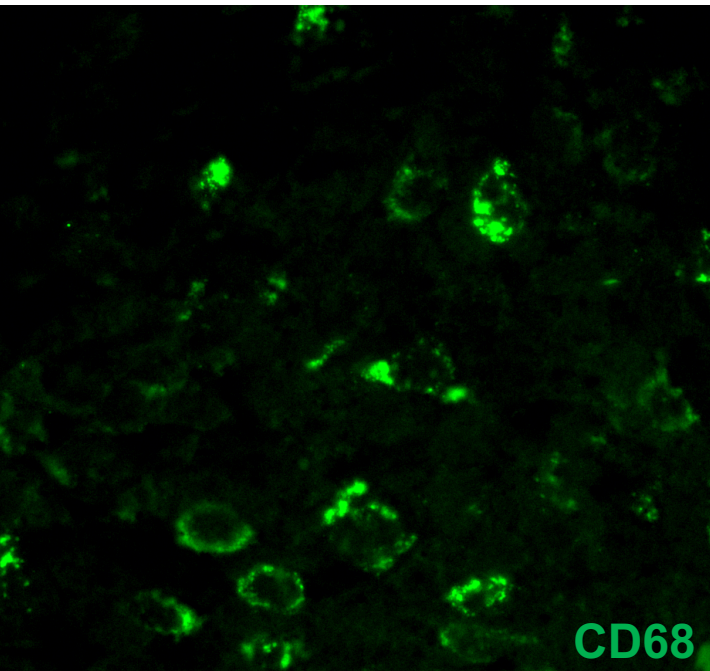
S1: Representative CD68 (green), CD163 (red) and DAPI (blue) staining in meningioma tissue sections. CD68⁺/CD163⁺ cells are characterized as M2 TAMs. CD68⁺/CD163⁻ cells are characterized as M1 TAMs. Scale bars represent 15 μ m.



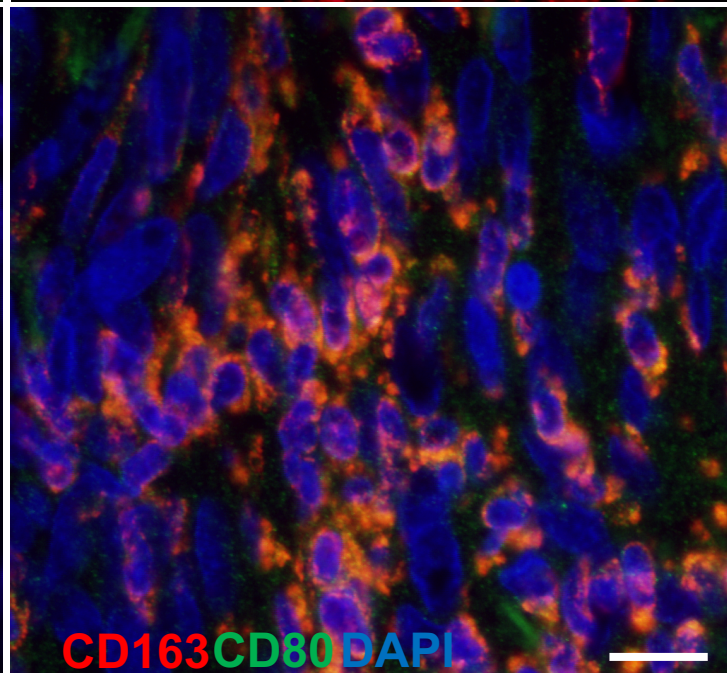
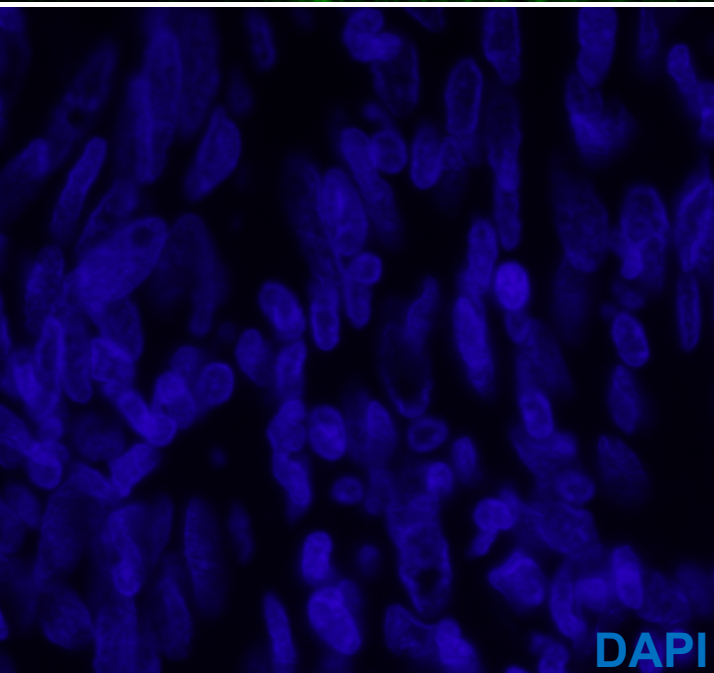
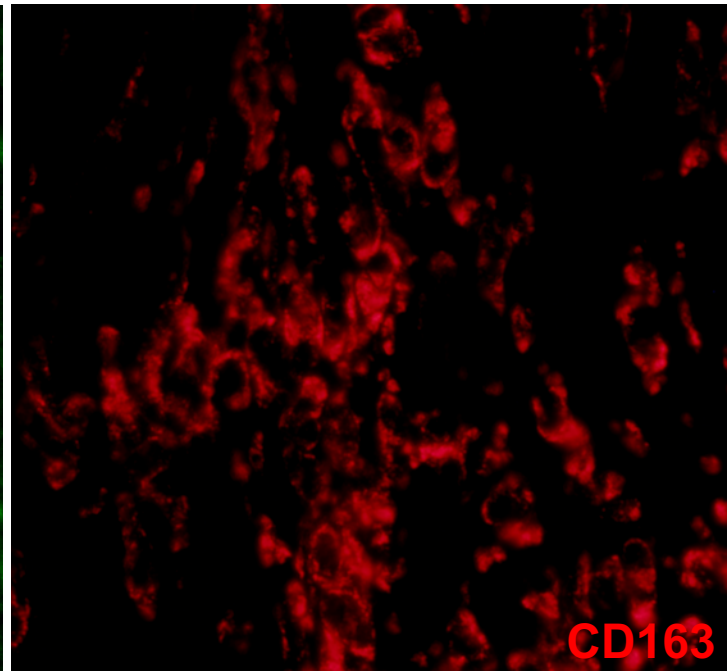
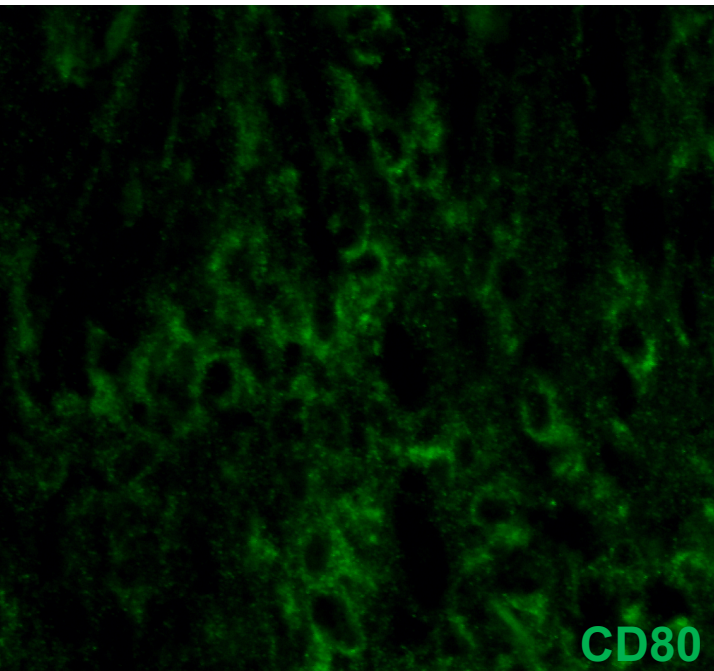
S2: Representative CD68 (green), iNOS (red) and DAPI (blue) staining in meningeoma tissue sections. CD68⁺/iNOS⁺ cells are characterized as M1 TAMs. CD68⁺/iNOS⁻ cells are characterized as M2 TAMs. CD68⁻/iNOS⁺ tumour cells are also present. Scale bars represent 15 μ m.



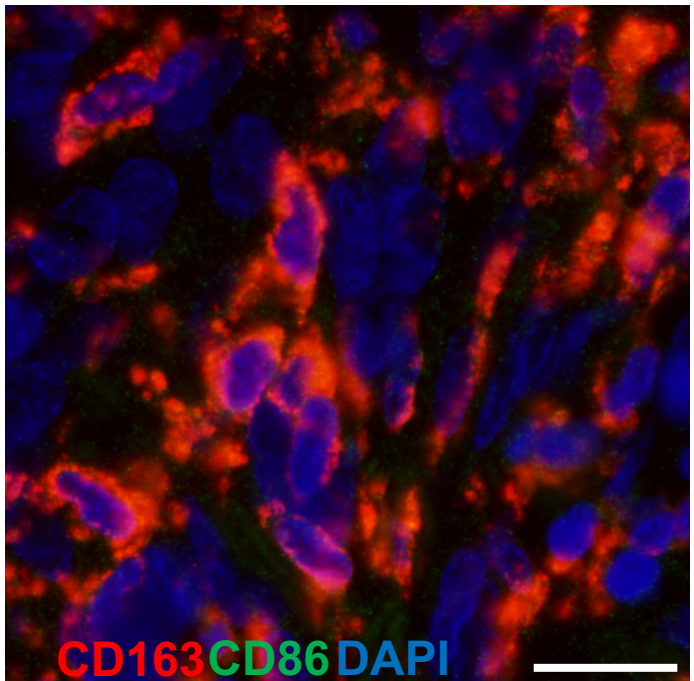
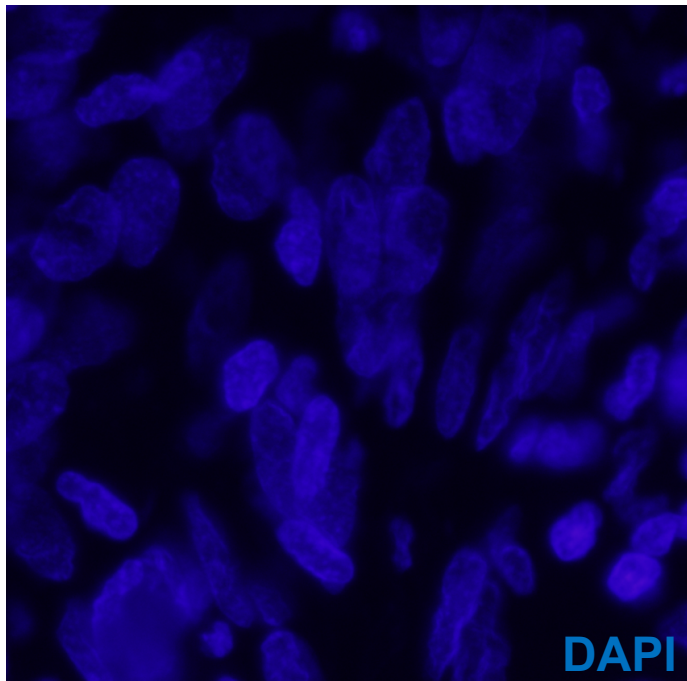
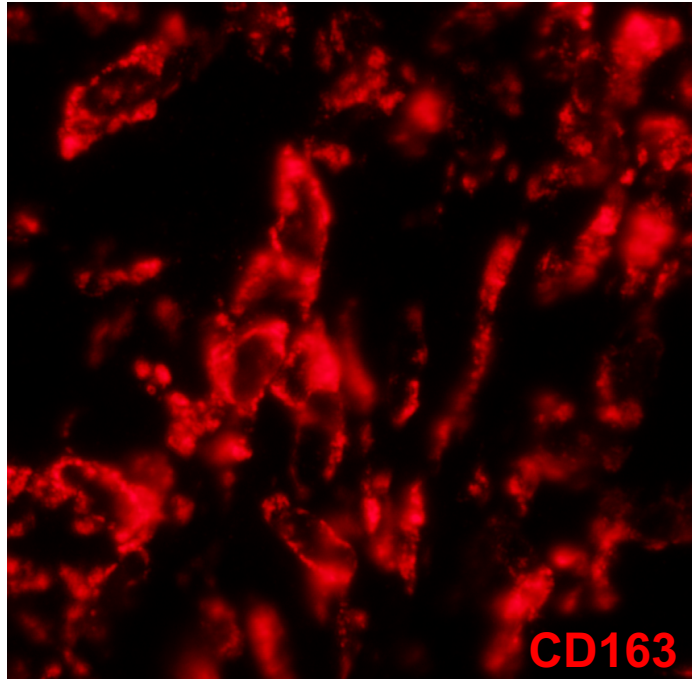
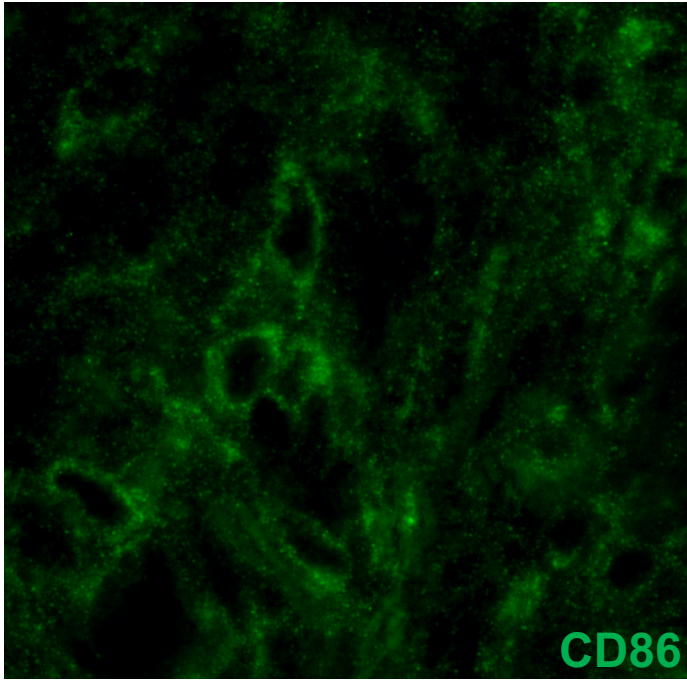
S3: Representative meningeoma tissues with CD163 and iNOS (red) staining in tumour cells. CD68⁻/CD163⁺ tumours cells in meningeoma tissues as represented in top panel. The bottom panel shows many tumour cells (CD68⁻ cells) stain positive for the M1 marker, iNOS. Scale bars represent 15 μ m.



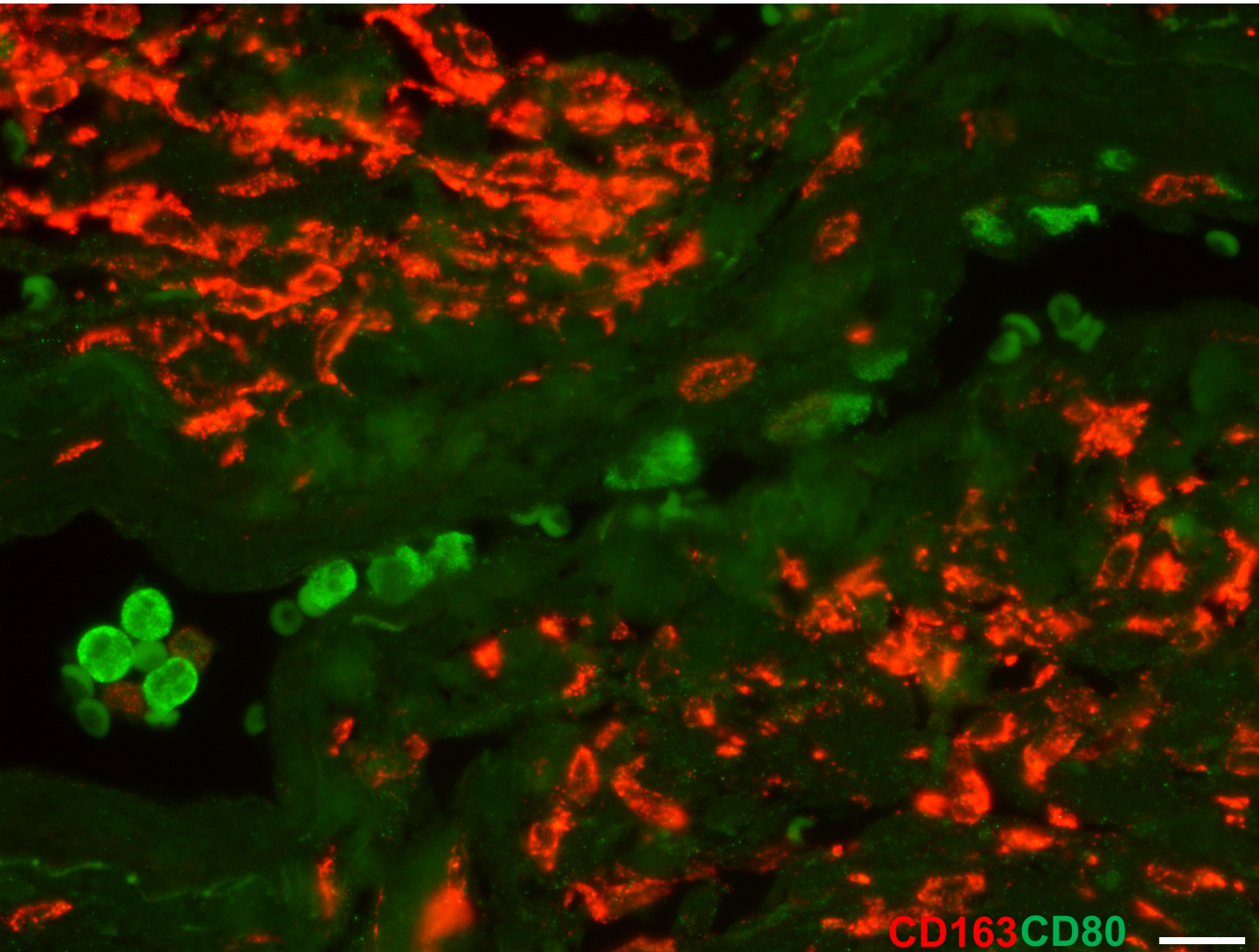
S4: Representative CD68 (green), CD206 (red), DAPI (blue) staining in meningeoma tissue sections. CD68⁺/CD206⁺ cells are characterized as M2 TAMs. CD68⁺/CD206⁻ cells are characterized as M1 TAMs. Scale bars represent 15 μm .



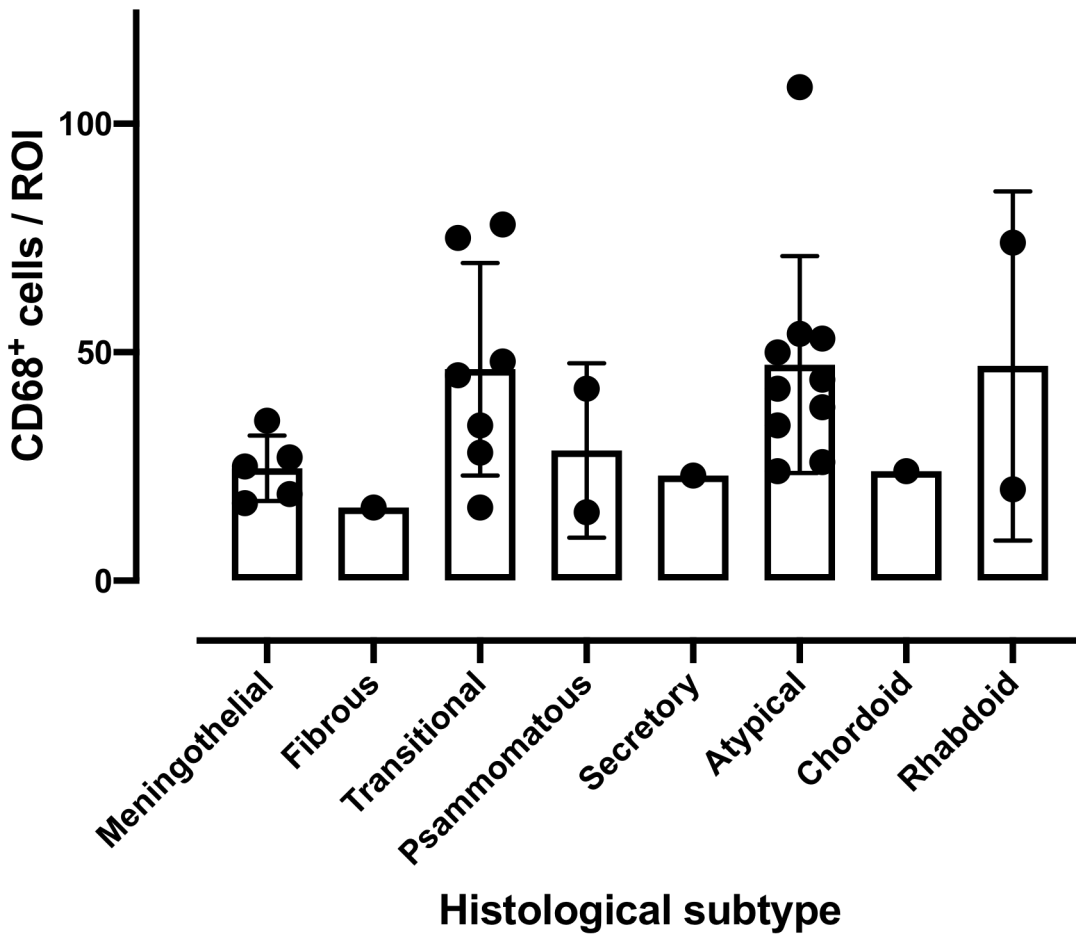
S5: Representative CD80 (green), CD163 (red) and DAPI (blue) staining in meningioma tissue sections. CD163⁺ cells have very low expression of M1 marker CD80. CD163⁺/CD80^{low} cells are characterized as M2 TAMs. Scale bars represent 15 μ m.



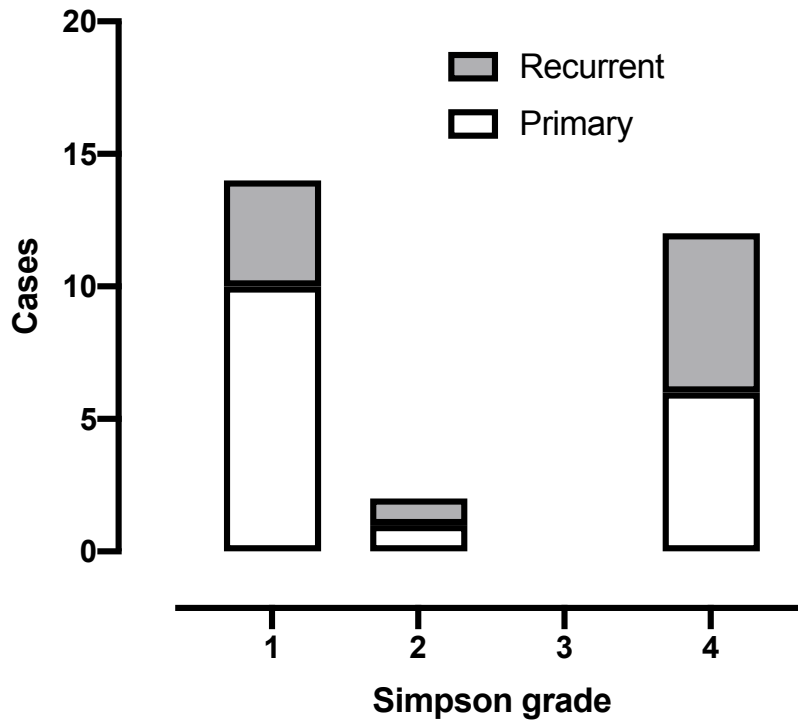
S6: Representative CD86 (green), CD163 (red) and DAPI (blue) staining in meningioma tissue sections. CD163⁺ cells have very low expression of M1 marker CD86. CD163⁺/CD86^{low} cells are characterized as M2 TAMs. Scale bars represent 15 μ m.



S7: CD80 (green) and CD163 (red) staining relative to tumour vasculature. Most monocytes in blood vessels stain for M1 marker, CD80. Infiltrating monocytes are CD80 positive with very low CD163 staining but perivascular TAMs show high expression for CD163 and nil to low CD80. Scale bars represent 15 μm .



S8: Total TAMs according to histological subtype: Mean TAM cell counts (CD68⁺ cells) for each case are plotted according to histological subtype. Bar represent mean TAM cells per 40x ROI. Error bars in each graph represent \pm SEM.



S9: Recurrence rates according to Simpson grade: The number of primary and recurrent cases for each Simpson grade (extent of resection) group for all cases in the study are plotted in bars.