

Supplementary information S2

to: Phylogenetic relationships in the southern African genus *Drosanthemum* (Ruschioideae, Aizoaceae)

by Liede-Schumann, Grimm, Nürk, Potts, Meve & Hartmann

Examples of character re-coding used for intra-clade haplotype analyses:

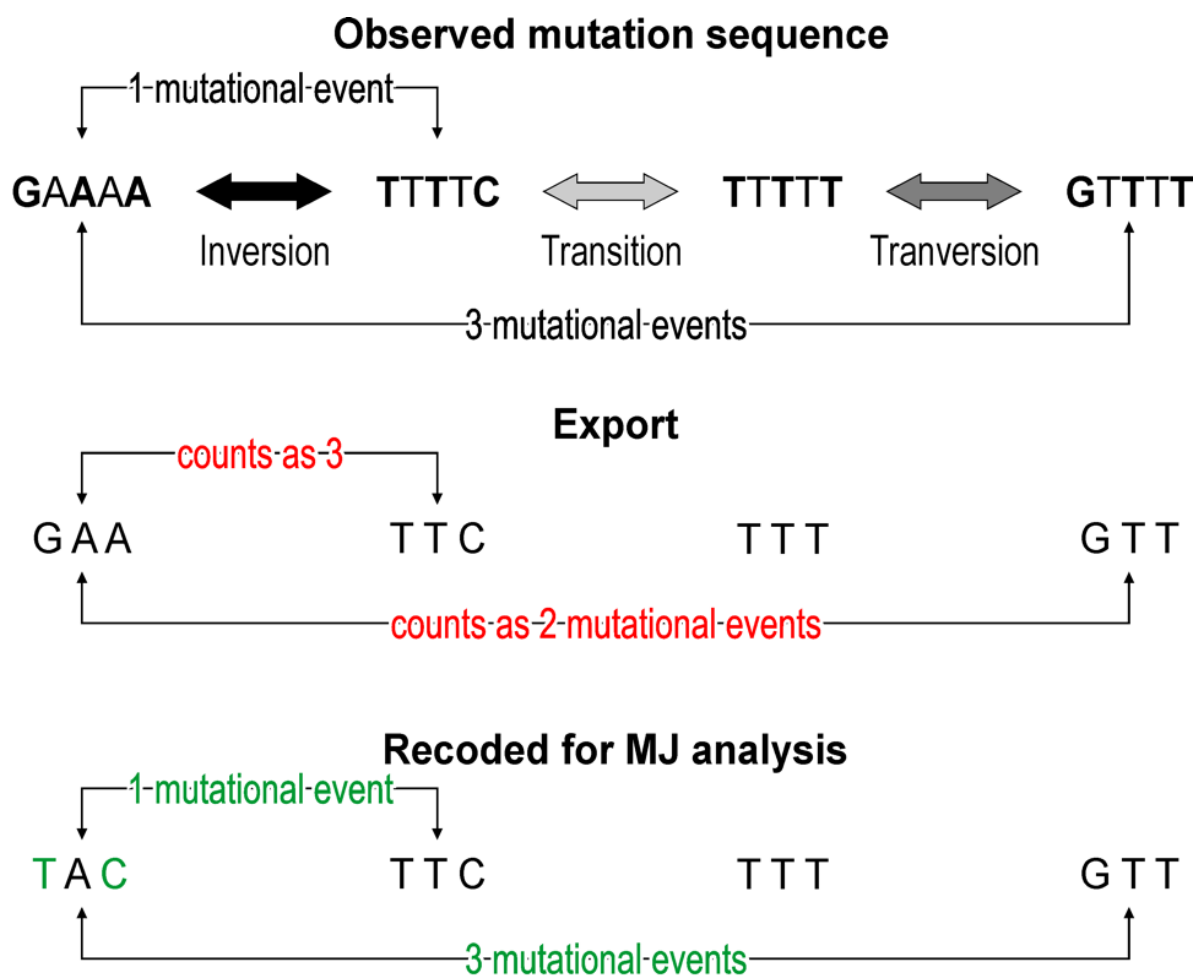


Figure S2 (A): Examples of character re-coding. Pseudo-loop motif (inversion with secondary point mutations), as found in the complementary ('pseudo-hairpin') region of the *trnK-rps16* in Clade III and IV (characters 7–9).

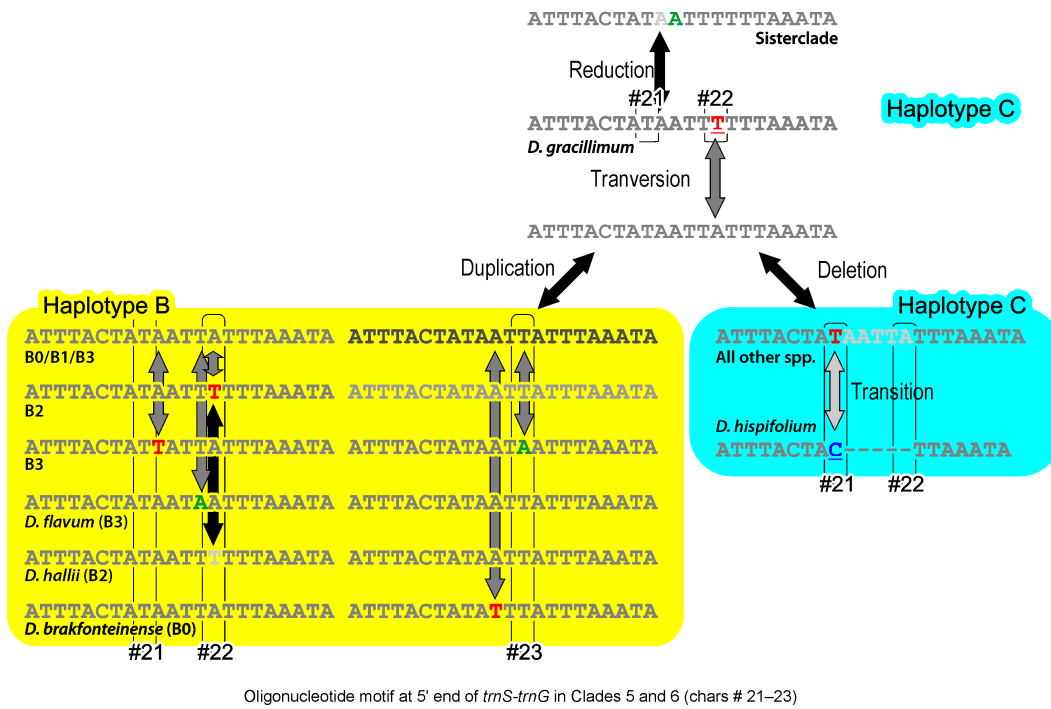


Figure S2 (B): Examples of character re-coding. Oligonucleotide motif at 5' end of *trnS-trnG* in Clades V and VI (characters 21–23).

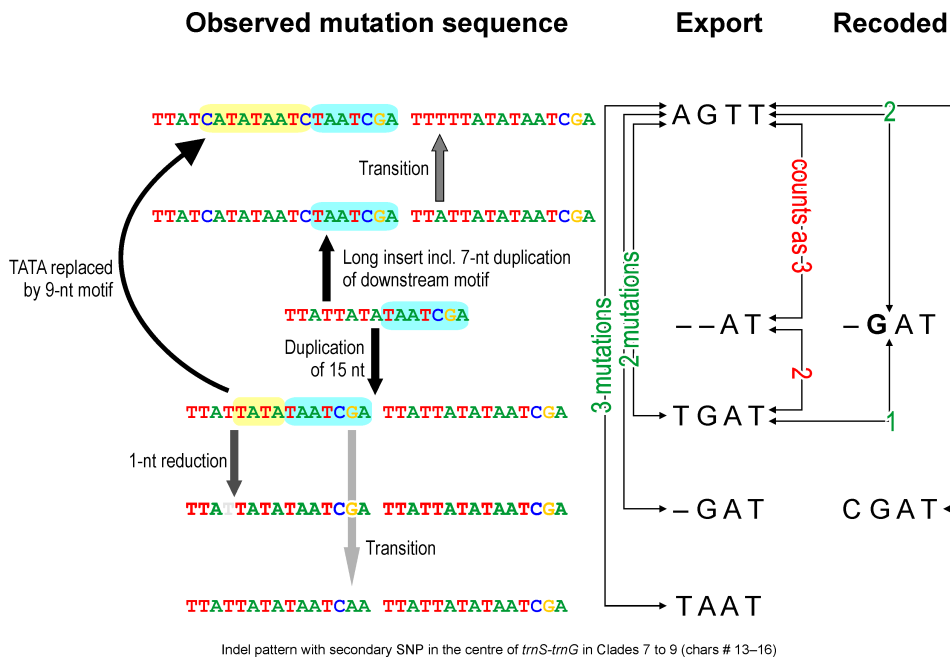


Figure S2 (C): Examples of character re-coding. Indel pattern with secondary SNP in the centre of *trnS-trnG* in Clades VII–IX (characters 13–16).