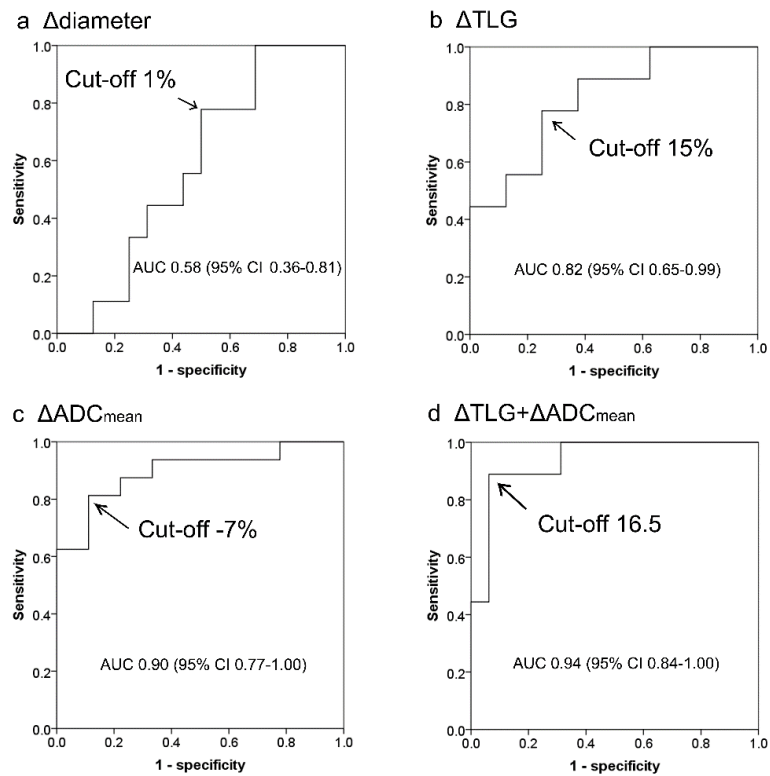


## Additional file 2

Figure S1.



**Figure S1.** ROC curve analysis of  $^{18}\text{F}$ -FDG PET/MRI parameters. Curves were constructed to determine the ability of  $\Delta$ diameter (a),  $\Delta$ TLG (b),  $\Delta$ ADC<sub>mean</sub> (c), and  $\Delta$ TLG+ $\Delta$ ADC<sub>mean</sub> (d) to predict disease progression after nivolumab therapy. The optimal cut-off values were estimated to be (a) 1%, (b) 15%, (c) -7%, and (d) 16.5.