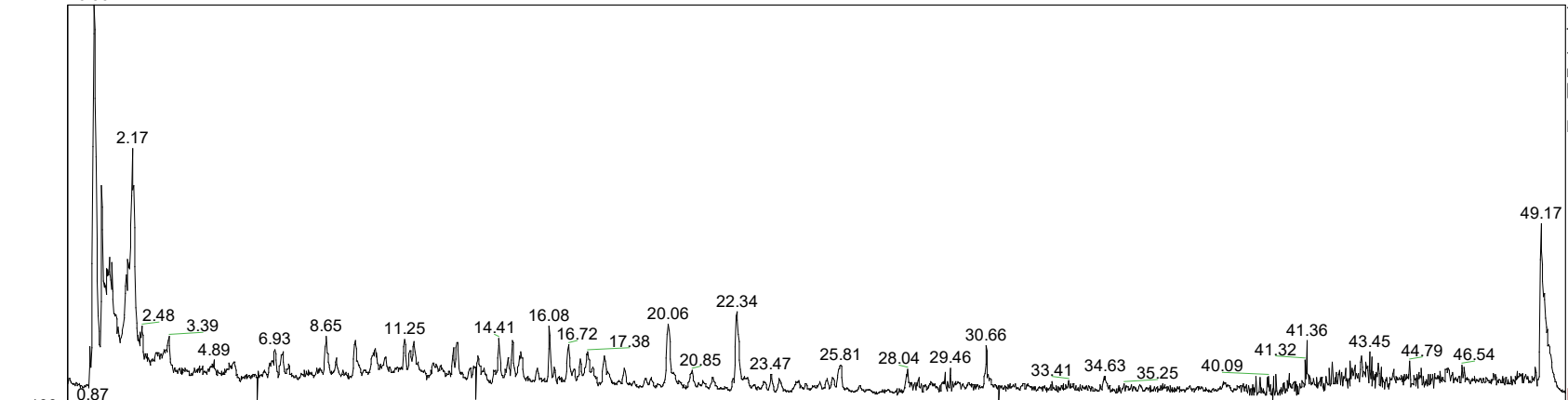
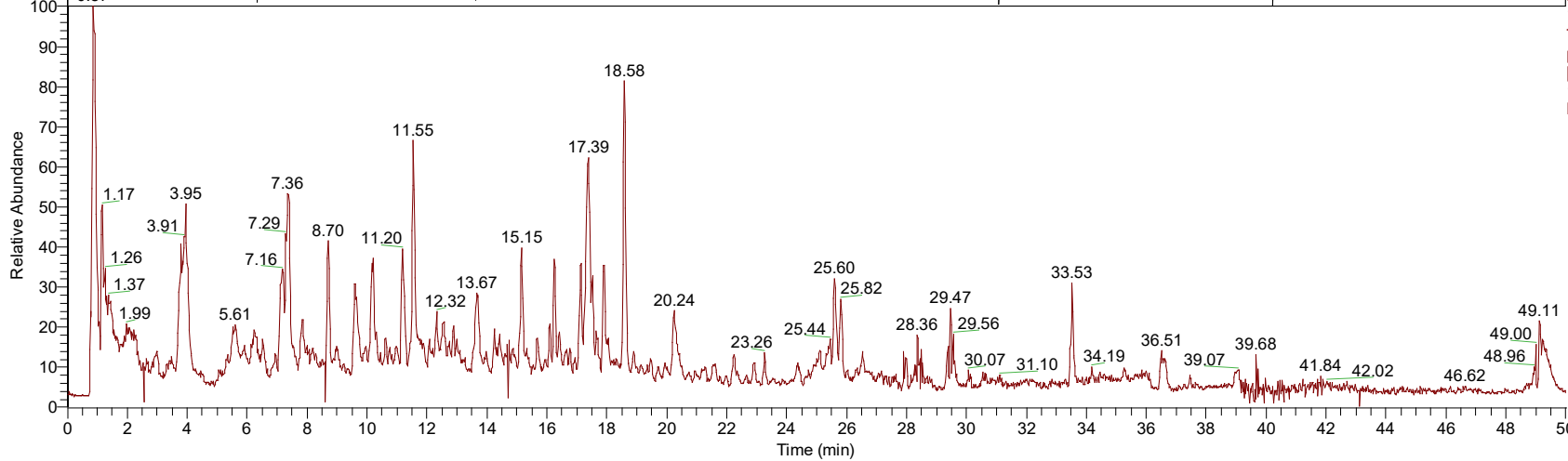


RT: 0.00 - 50.01
0.90

NL:
7.37E9
TIC F: FTMS
+ p ESI Full
ms
[100.0000-
1500.0000]
MS CLG



NL:
1.56E9
TIC F: FTMS -
p ESI Full ms
[100.0000-
1500.0000]
MS CLG



CLG HPLC mass spectrum