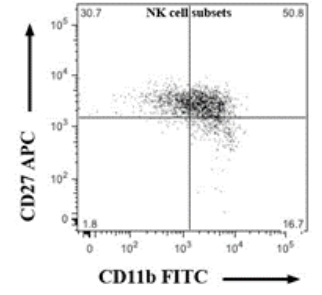
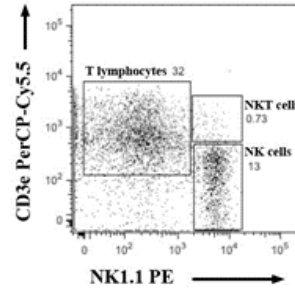
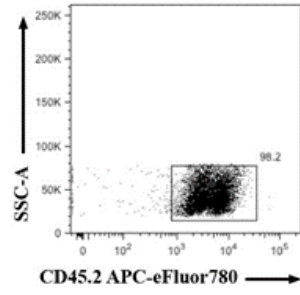
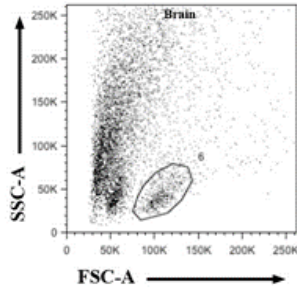
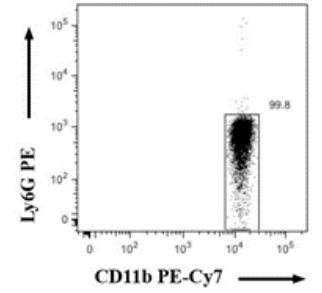
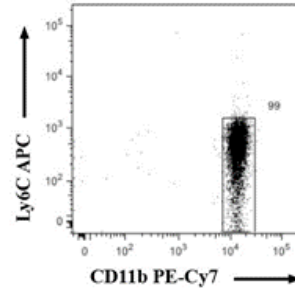
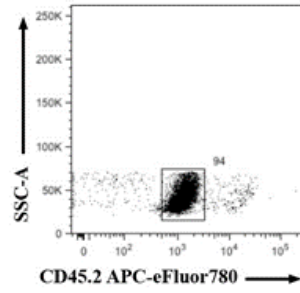
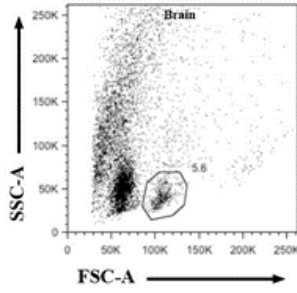


Gating strategies for flow cytometric analyses. (A) NK cells were gated as CD45⁺/CD3⁻/NK1.1⁺ lymphocytes and were divided into four subsets according to CD27 and CD11b expression. The example refers to the brain but similar analyses were performed for the bone marrow and spleen. T lymphocytes (CD45⁺/CD3⁺/NK1.1⁻ cells) and NKT lymphocytes (CD45⁺/CD3⁺/NK1.1⁺ cells) were also evaluated. (B) Microglia was identified as CD45^{low}/CD11b⁺/Ly6C⁻/Ly6G⁻ cell population. (C) Brain associated monocytes/macrophages were defined as CD45⁺/CD11b⁺/Ly6C⁺ cells. (D) NK cell analysis in the spleen of mice treated with anti-NK1.1 Ab. Evaluation of the NK cell frequency confirms the successful NK cell depletion. Numbers in the plots indicate percentage of parent cells.

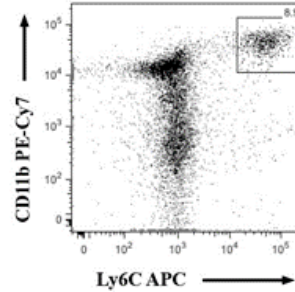
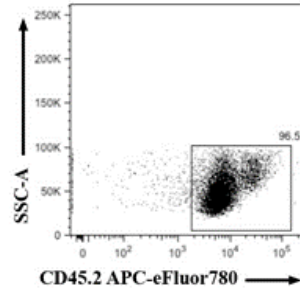
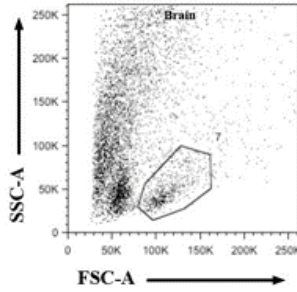
A NK cells



B Microglia



C Monocytes



D NK cells

