

huRBL titration curves

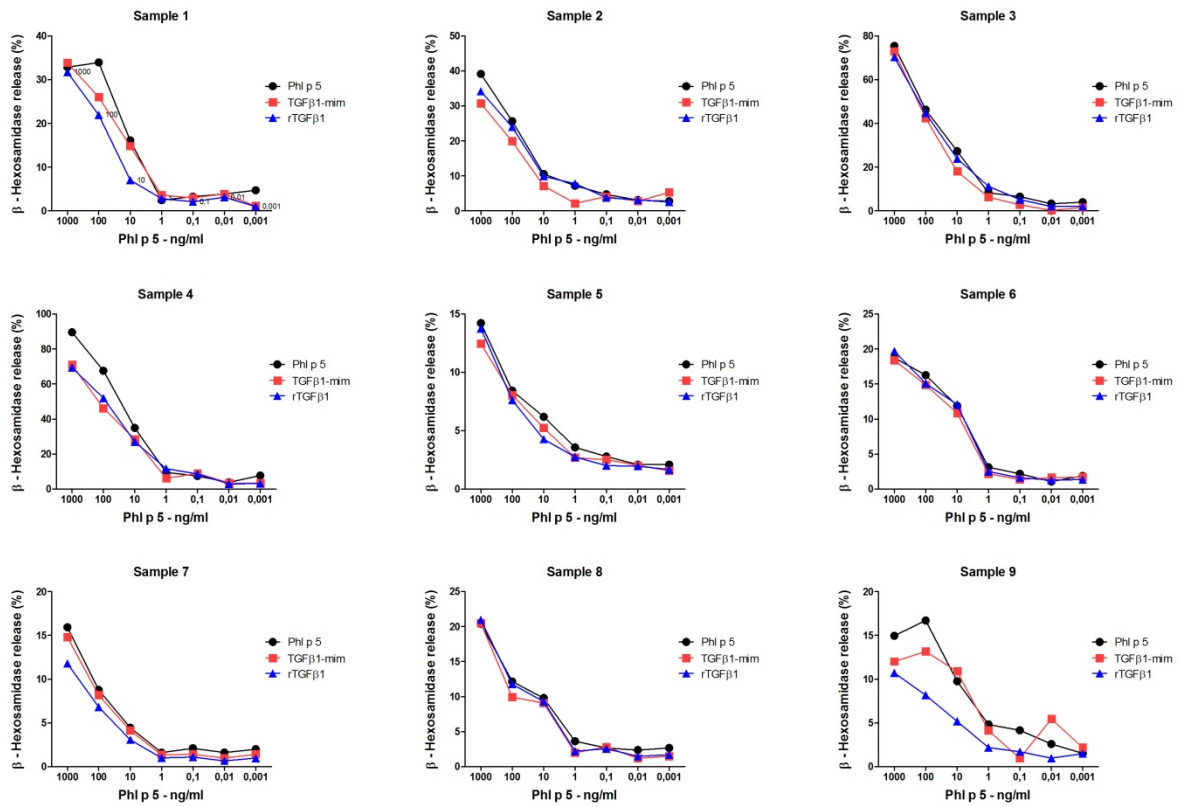


Figure E1. Titration curves of huRBL-2H3 cells encoding the human Fc ϵ RI receptor. Cells were sensitized overnight with sera from 9 different grass pollen allergic patients, treated for 24 h either with TGF β 1-mim peptide or recombinant TGF β 1, and then challenged for 1 h with the indicated concentrations of recombinant Phl p 5.