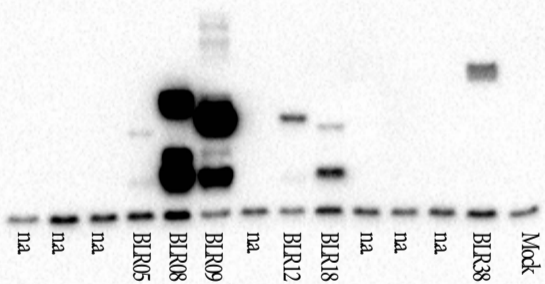
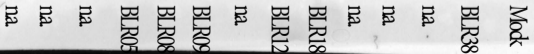


Chemiluminescence_blot_effector proteins1



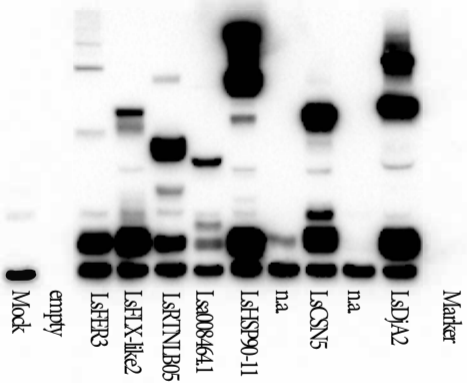
Marker_blot_effector proteins1



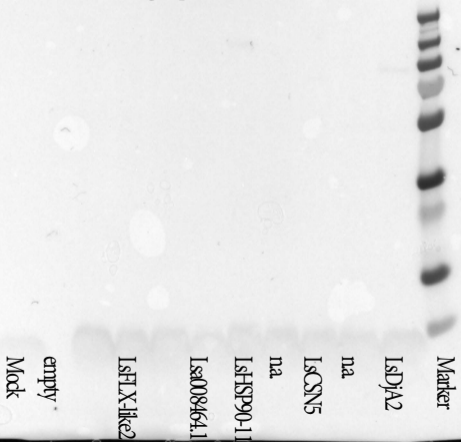
A Western blot image showing marker effector proteins. The lanes are labeled from top to bottom: Mock, BLR38, na, na, na, na, BLR18, BLR12, na, BLR09, BLR08, BLR05, na, na, na. The Mock lane shows a series of distinct bands. The other lanes show varying patterns of bands, with some lanes (na) showing no bands. A large, irregular white stain is present in the center of the blot, partially obscuring the lanes.

Lane Label	Band Pattern
Mock	Multiple distinct bands
BLR38	Multiple distinct bands
na	No bands
na	No bands
na	No bands
na	No bands
BLR18	Multiple distinct bands
BLR12	Multiple distinct bands
na	No bands
BLR09	Multiple distinct bands
BLR08	Multiple distinct bands
BLR05	Multiple distinct bands
na	No bands
na	No bands
na	No bands

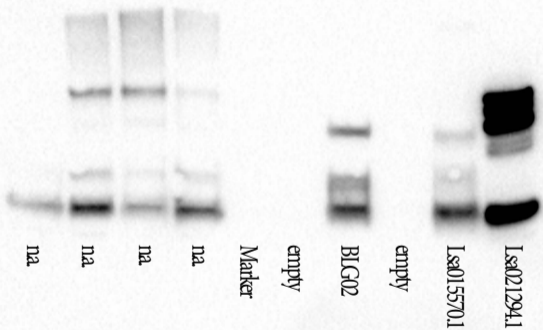
Chemiluminescence_blot_target proteins1



Marker_blot_target proteins1



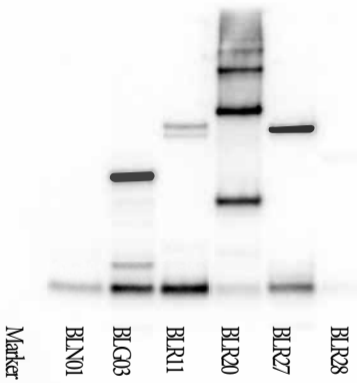
Chemiluminescence_blot_target_proteins2 and BLG02



Marker_blot_target_proteins2 and BLG02

Isa02129
Isa015
empty
BLG0
empty
Marker
na
na
na
na





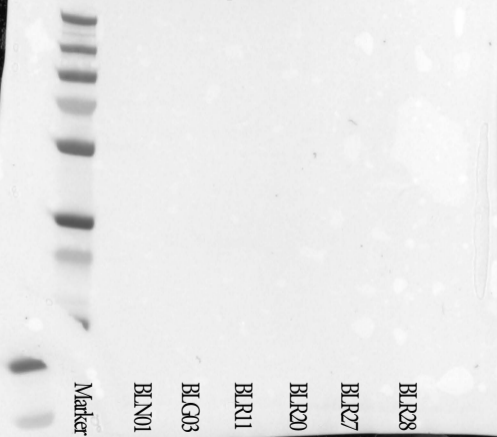
Chemiluminescence_blot_effector proteins2_detection 1 sec

Western blot analysis showing chemiluminescence detection of effector proteins. The blot displays several lanes, each labeled with a BLR strain or a marker. The lanes are: BLR28, BLR27, BLR20, BLR11, BLG03, BLN01, and Marker. The BLR28, BLR27, and BLR20 lanes show a prominent, dark band at the top, indicating a strong signal. The BLR11, BLG03, and BLN01 lanes show a similar band at the top, but it is less intense. The Marker lane shows a distinct band at the bottom, serving as a reference point.

BLR28
BLR27
BLR20
BLR11
BLG03
BLN01
Marker

Chemiluminescence_blot_effector proteins2_detection 37 sec

Marker_blot_effector proteins2



Marker

BLN01

BLG03

BLR11

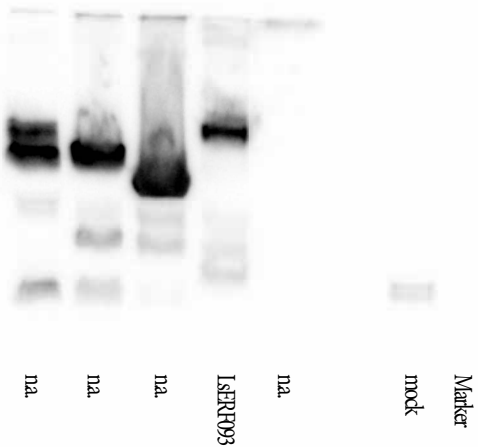
BLR20

BLR27

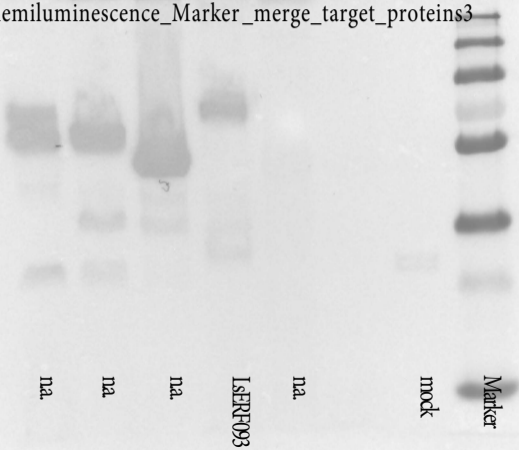
BLR28

Marker

Chemiluminescence_blot_target_proteins3



Chemiluminescence_Marker_merge_target_proteins3



Marker

modk

n.a.

ISERF093

n.a.

n.a.

n.a.