

Supplementary table 1. Patients' baseline characteristics during the time course of therapy

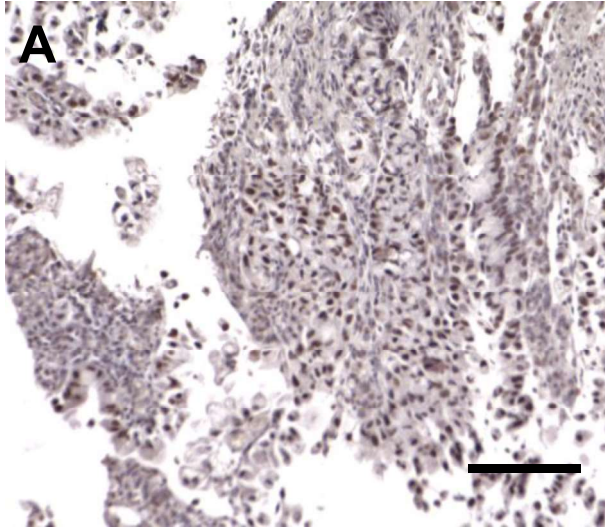
Characteristic	Before nivolumab therapy n=30	After nivolumab therapy n=23	At the time of PD n=25
Age	Median (range)		
years	69 (36 - 82)	69 (36 - 82)	68 (36 - 80)
Sex	n (%)		
Male	19 (63%)	15 (65%)	17 (63%)
Female	11 (37%)	8 (35%)	8 (37%)
ECOG PS			
0	5 (17%)	5 (22%)	4 (16%)
1	17 (57%)	17 (74%)	15 (60%)
2	8 (27%)	8 (35%)	6 (24%)
HER2 status			
positive	7 (23%)	6 (23%)	5 (23%)
negative	23 (77%)	17 (77%)	20 (77%)
Previous treatment regimens			
1	2 (6.7%)	2 (8.7%)	2 (8%)
2	21 (70%)	15 (65%)	17 (68%)
3	7 (23%)	6 (26%)	6 (24%)
Previous therapy			
Fluoropyrimidine	28 (93%)	21 (91%)	23 (92%)
Platinum	24 (80%)	18 (78%)	19 (76%)
Taxane	26 (87%)	20 (87%)	22 (88%)
Irinotecan	3 (10%)	21 (93%)	23 (92%)
Ramucirumab	22 (73%)	18 (78%)	17 (68%)
Trastuzumab	5 (17%)	4 (17%)	4 (16%)
MSI/ MMR status			
dMMR	1 (3%)	1 (5%)	0 (0%)
PD-L1 CPS			
≥1	17 (57%)	12 (52%)	14 (56%)
<1	12 (40%)	10 (43%)	10 (40%)
Unknown	1 (3%)	1 (5%)	1 (4%)

Age (median and range), ECOG PS (Eastern Cooperative Oncology Group performance status), HER2 (Human epidermal growth factor receptor 2), MSI (Microsatellite instability), MMR (DNA Mismatch repair), dMMR (deficient MMR), CPS (Combined positive score)

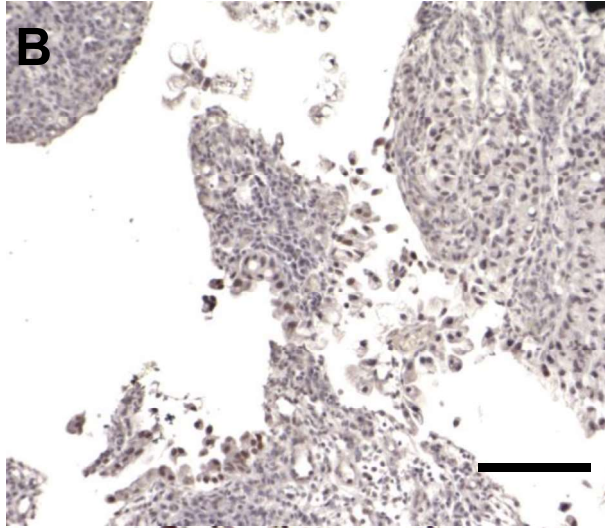
Supplementary Figure 1
Case 1

Case 15

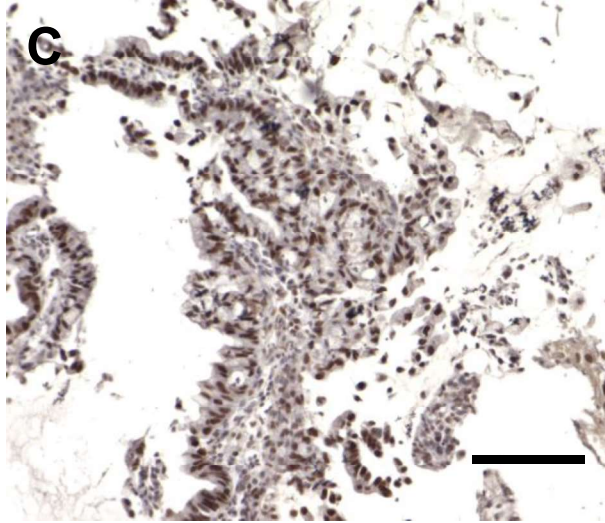
MLH1



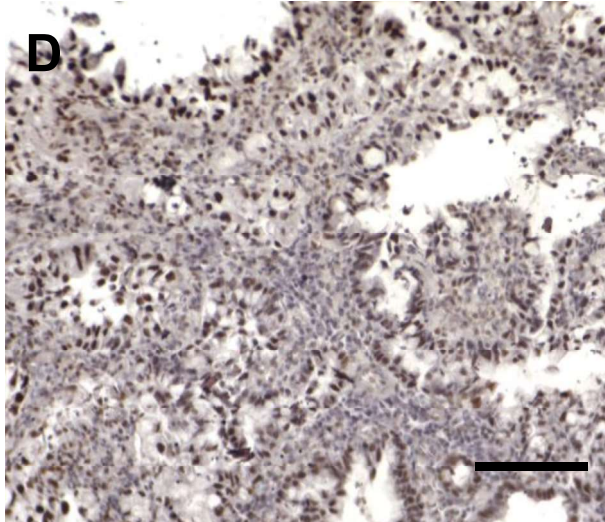
PMS2



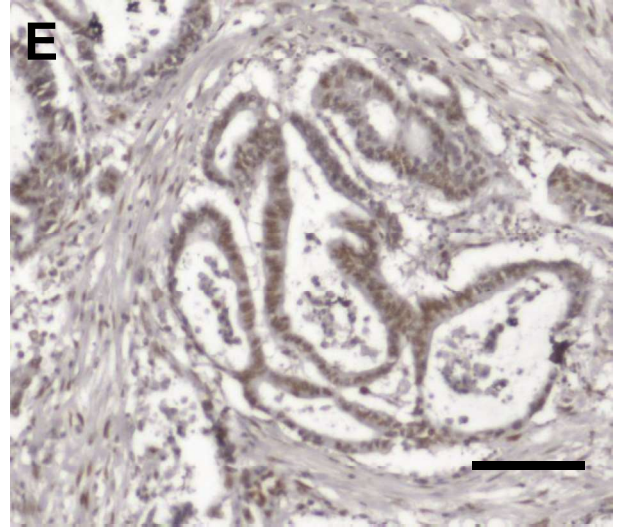
MSH2



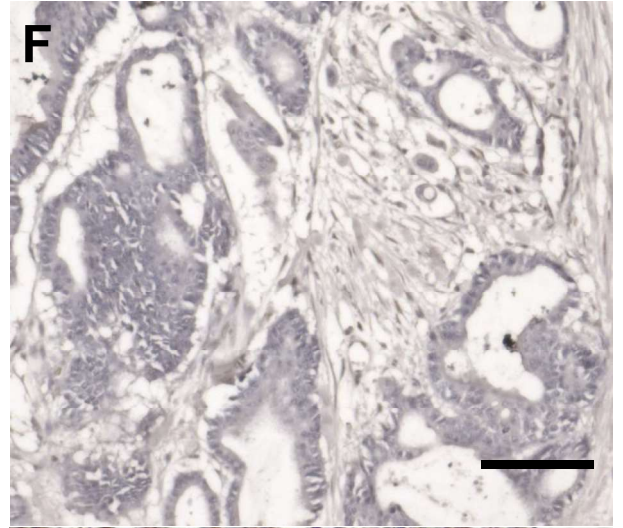
MSH6



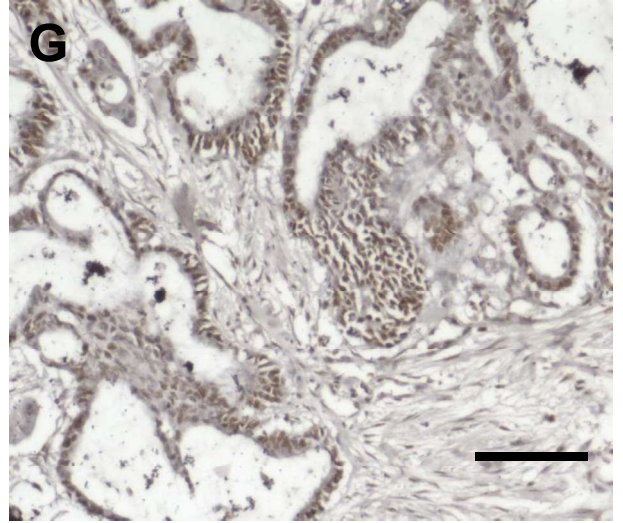
E



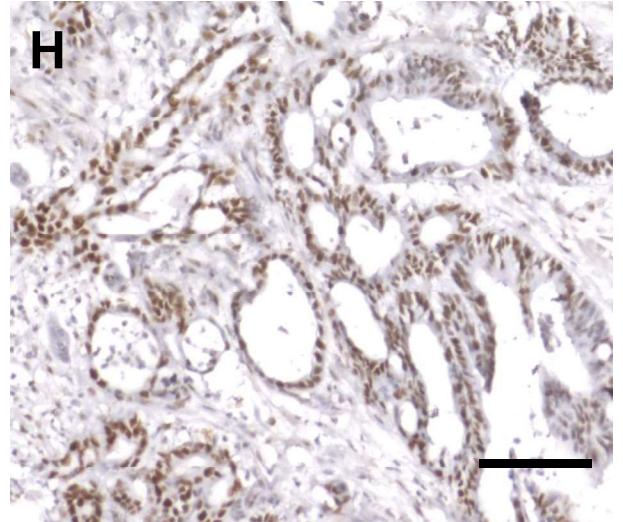
F



G



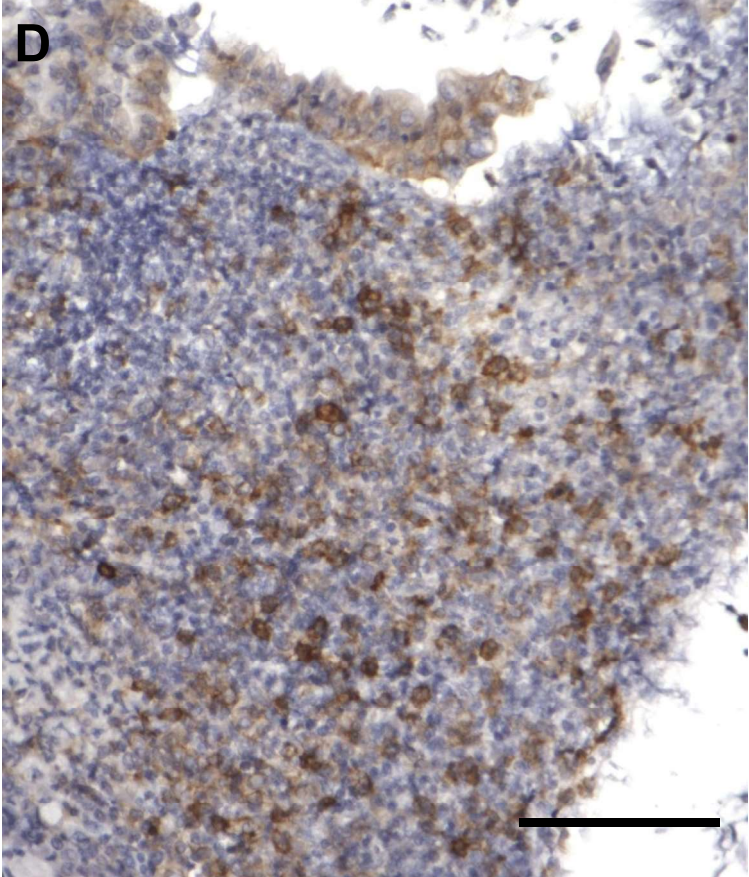
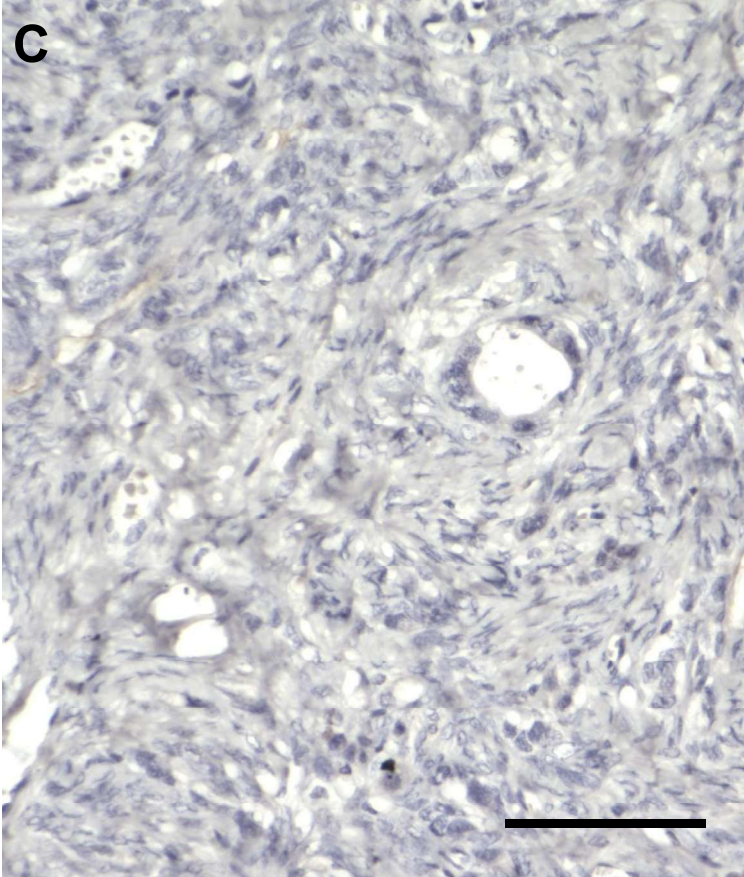
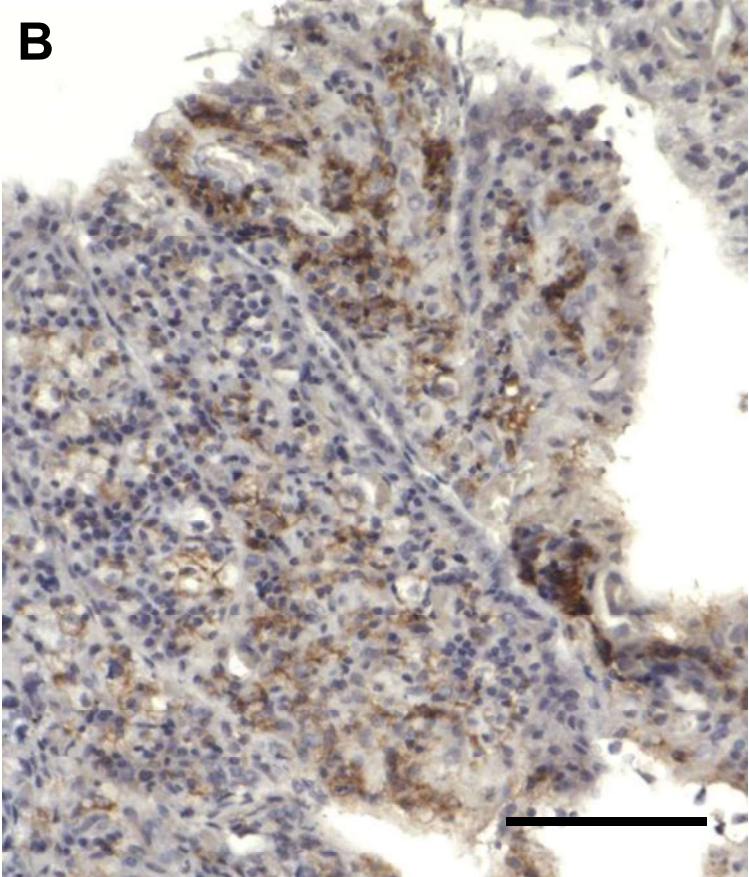
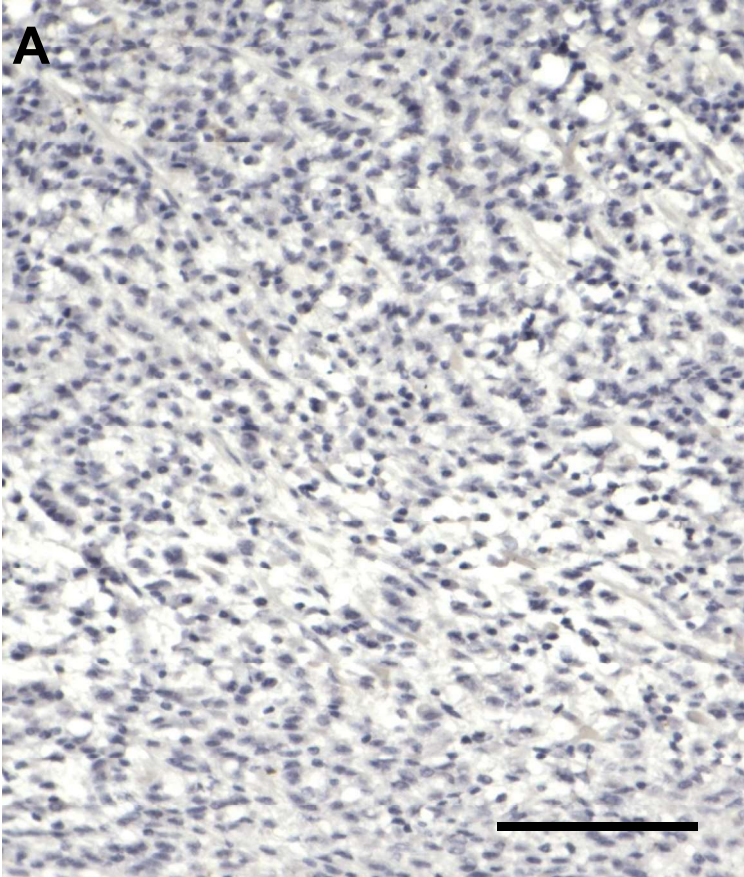
H



Supplementary Figure 2

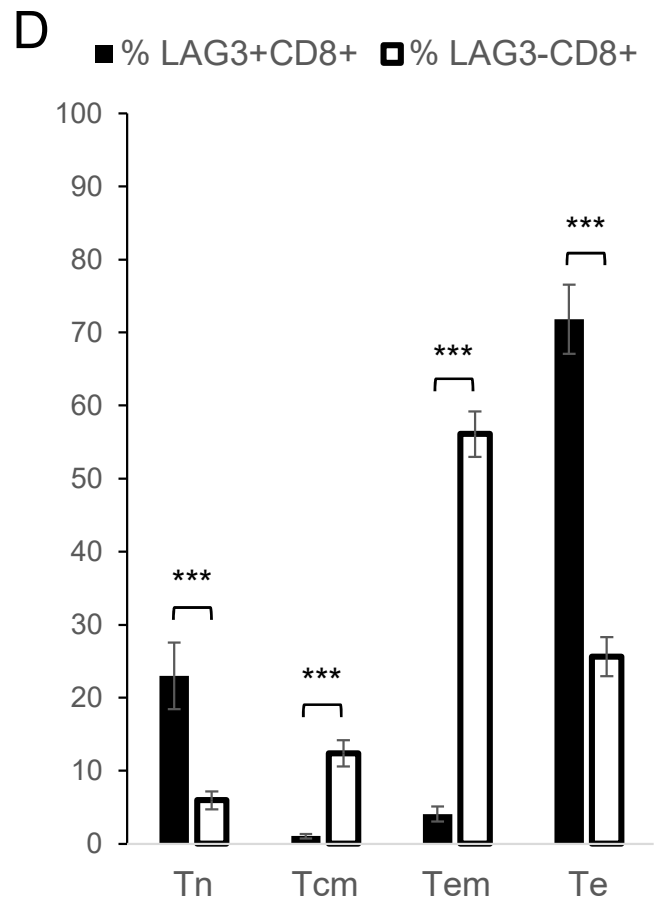
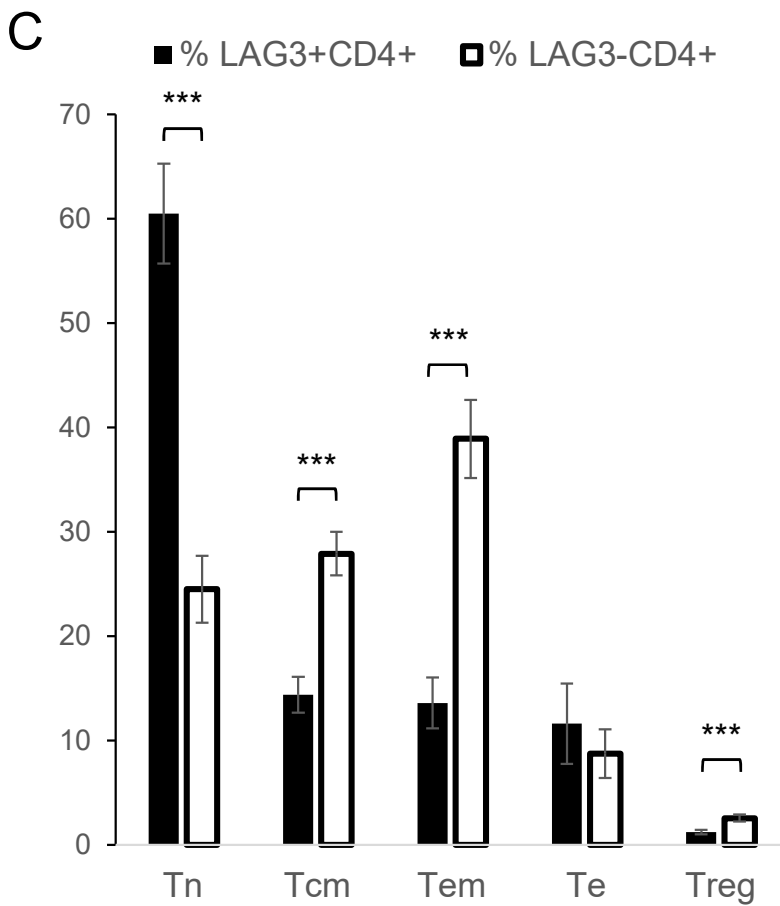
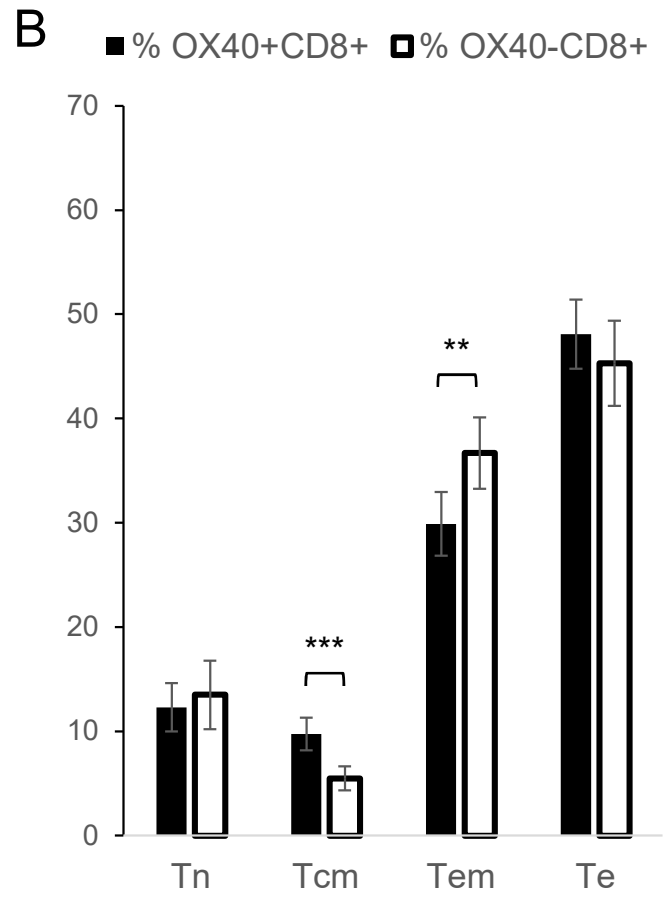
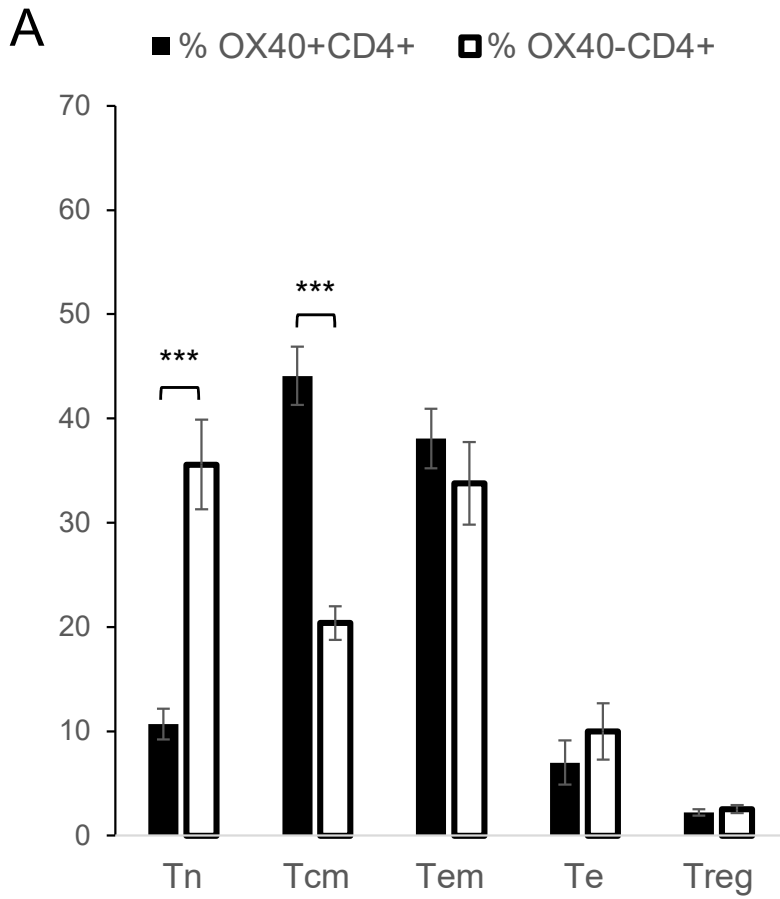
PD-L1 CPS <1

PD-L1 CPS ≥1



Supplementary Figure 3

p < 0.01, *p < 0.001



SUPPLEMENTARY FIGURE LEGENDS

Supplementary figure 1: Immunohistochemical staining of primary lesions for mismatch repair (MMR) proteins. **A-D**, A representative MMR-proficient case (case 1) shows nuclear staining of all four MMR proteins in tumor tissue (scale bar 100 μ m). **E-H**, The MMR-deficient case (case 15) shows loss of PMS2 protein in tumor cells (scale bar 100 μ m).

Supplementary figure 2: Immunohistochemical staining of primary lesions for PD-L1. **A, C, A** representative PD-L1 combined positive score (CPS) <1 case (case 10 and case 30). **B, D, A** representative PD-L1 CPS ≥ 1 case (case 11 and case 27) (scale bar 100 μ m).

Supplementary figure 3: **A**, The proportions of naïve T cells (Tn), central memory T cells (Tcm), effector memory T cells (Tem), effector T cells (Te), and regulatory T cells (Treg) in OX40+/OX40-CD4+T cells are shown. Columns, means of 23 patients; black columns mean OX40+CD4+T cells, and white columns mean OX40-CD4+T cells; bars, SEM; **p <0.01 ; ***p <0.001 . **B**, The proportions of Tn, Tcm, Tem, and Te in OX40+/OX40-CD8+T cells. **C**, The proportions of Tn, Tcm, Tem, Te, and Tregs in LAG3+/LAG3-CD4+T cells. **D**, The proportions of Tn, Tcm, Tem, and Te in LAG3+/LAG3-CD8+T cells.