

Supplementary Fig. 2

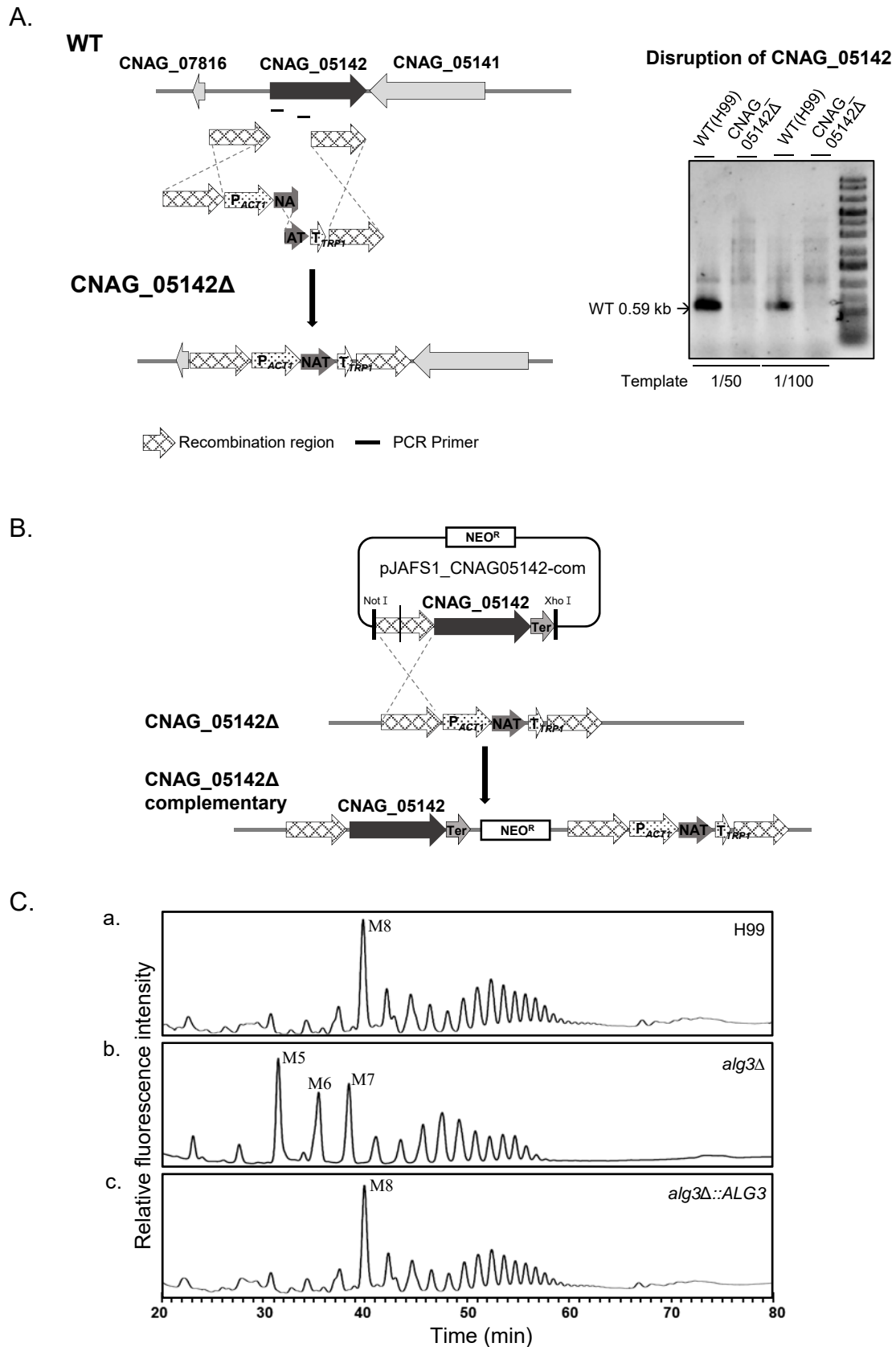


FIG S2 Disruption of *ALG3* and construction of a complementation strain. (A) Strategy for CNAG_05142 disruption using the nourseothricin acetyltransferase (NAT) split marker. Stable transformants were selected on YPD medium containing nourseothricin (100 μ g/ml) and were screened by PCR. (B) Scheme of construction of an *alg3Δ::ALG3* complementation strain. (C) HPLC-based neutral glycan profiles of WT, *alg3Δ*, and *alg3Δ::ALG3* strains.