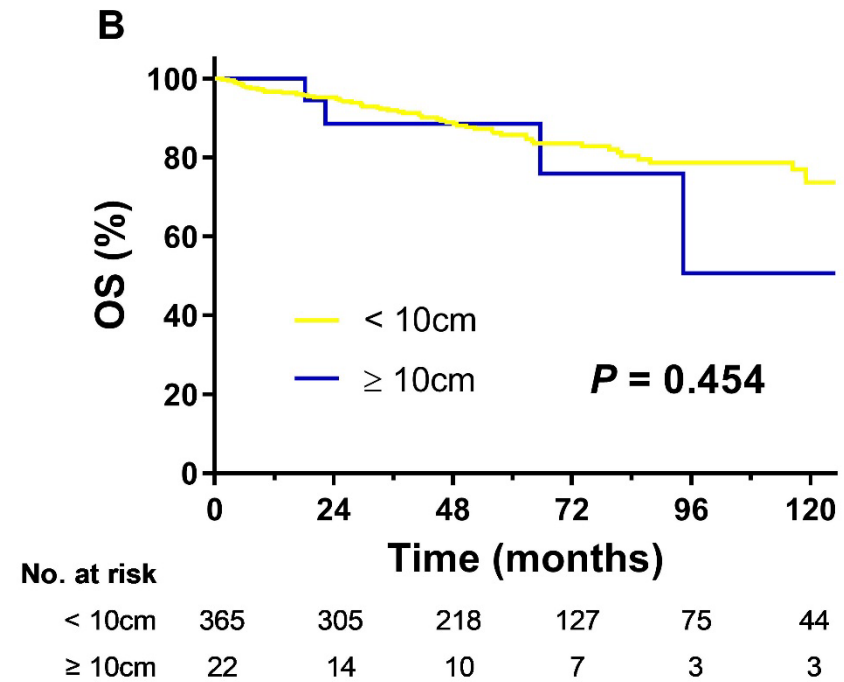
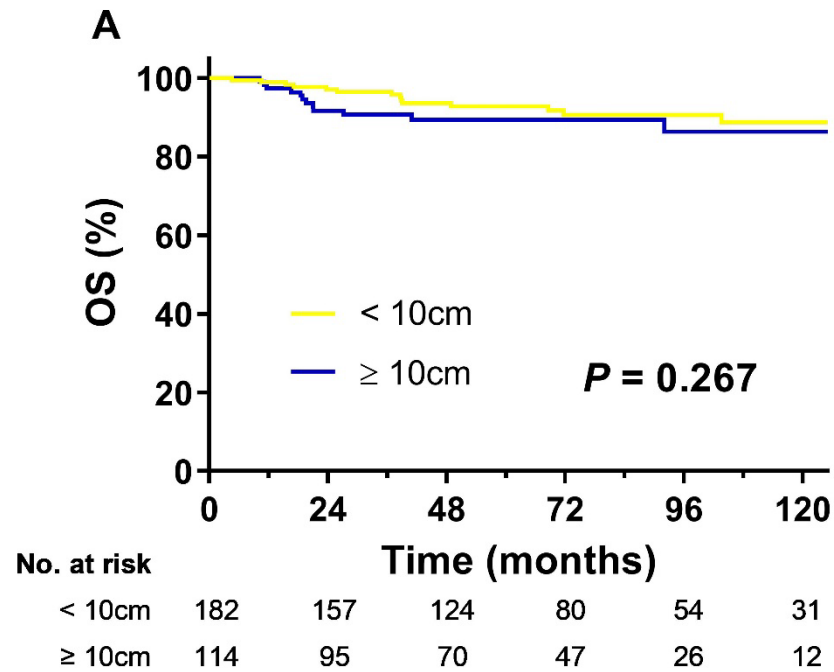


Supplemental Appendix

SUPPLEMENTAL FIGURE 1.

Overall survival comparison by size group with the cut-off value of 10 cm in (A) Mediastinal Bulk (MB)-type and in (B) Non-Bulky/Non-Mediastinal Bulk (NB/NMB)-type subgroup.



Supplemental Table 1. treatment modality percentage among different chemotherapy response groups

	Chemotherapy (%)	CMT (%)	p
Evaluated by CT			
CR/CRu	216 (82.1)	47 (17.8)	0.000
PR	147 (64.8)	80 (35.2)	
SD	31 (79.5)	8 (20.5)	
PD	56 (96.6)	2 (3.4)	
Unknown/NA	83 (86.5)	13 (13.5)	
Evaluated by PET			
CR	400 (78.6)	109 (21.4)	0.000
PR	25 (61.6)	16 (39.0)	
SD	10 (83.3)	2 (16.7)	
PD	62 (98.4)	1 (1.6)	
Unknown/NA	36 (62.1)	22 (37.9)	

Abbreviations: CR, complete remission; CRu, complete remission uncertain; PR, partial remission; SD, stable disease, PD, progressive disease; NA, information not available; CMT, combined modality treatment.

Supplemental Table 2. Disease responses and 5-year survival rates (%)

Variable	MB	NB/NMB	P value
Chemotherapy response by CT			
CR/CRu	108 (34.1)	248 (56.4)	0.000
PR	131 (41.5)	104 (23.6)	
SD	22 (7.0)	21 (4.8)	
PD	32 (10.1)	42 (9.5)	
Unknown	8(2.5)	25 (5.7)	
Chemotherapy response by PET			
CR	217 (72.1)	298 (76.6)	0.126
PR	26 (8.6)	15 (3.9)	
SD	5 (1.7)	7 (1.8)	
PD	26 (8.6)	37 (9.5)	
No PET	27 (9.0)	32 (8.2)	
Relapse	33 (14.6)	51 (16.3)	0.593
5-year OS	91.9%	85.8%	0.006
5-year PFS	73.7%	73.6%	0.547

Abbreviations: MB, mediastinal bulk-type; NB/NMB, Non-bulky/non-mediastinal bulk-type; CR, complete remission; PR, partial remission; SD, stable disease, PD, progressive disease; OS, overall survival; PFS, progression free survival.

Supplemental Table 3. Univariable Analysis of PFS and OS at 5 Years

Variable	PFS		OS	
	HR (95% CI)	p	HR (95% CI)	p
Dmax	1.00 (0.96-1.05)	0.832	0.97 (0.91-1.03)	0.347
Dmax (<5 vs. ≥5)	1.02 (0.75-1.38)	0.908	0.64 (0.42-0.97)	0.038
Dmax in Mediastinum	1.00 (0.96-1.03)	0.892	0.96 (0.90-1.01)	0.101
Type (MB vs. NB/NMB)	0.91 (0.67-1.23)	0.547	0.53 (0.34-0.84)	0.007
Age	1.01 (1.00-1.02)	0.084	1.03 (1.02-1.04)	0.000
Age (<45 vs. ≥45)	1.23 (0.90-1.68)	0.191	2.19 (1.44-3.33)	0.000
Age (<60 vs. ≥60)	1.50 (1.01-2.23)	0.043	3.83 (2.46-5.96)	0.000
Gender	1.11 (0.83-1.50)	0.483	1.13 (0.74-1.72)	0.563
Pathology	0.93 (0.83-1.05)	0.243	1.06 (0.91-1.24)	0.428
BM involvement	1.02 (0.77-1.36)	0.895	1.13 (0.77-1.66)	0.537
ECOG PS	1.11 (0.90-1.38)	0.324	1.92 (1.51-2.43)	0.000
ECOG PS (0 vs. 1 vs. ≥2)	1.16 (0.92-1.47)	0.210	2.20 (1.62-2.99)	0.000
B symptom	1.22 (0.92-1.62)	0.157	1.40 (0.95-2.08)	0.091
Stage (III vs. IV)	0.90 (0.67-1.22)	0.500	0.81 (0.53-1.23)	0.322
IPS	1.14 (1.02-1.26)	0.017	1.21 (1.04-1.40)	0.011
IPS (0-1 vs. 2-3 vs. 4-6)	1.34 (1.08-1.67)	0.009	1.35 (0.99-1.83)	0.059

Abbreviations: Dmax, maximal diameter; MB, mediastinal bulk-type; NB/NMB, non-bulky/ non-mediastinal bulk-type; BM, bone marrow; ECOG, Eastern Cooperative Oncology Group; PS, performance status; IPS, International Prognostic Score.