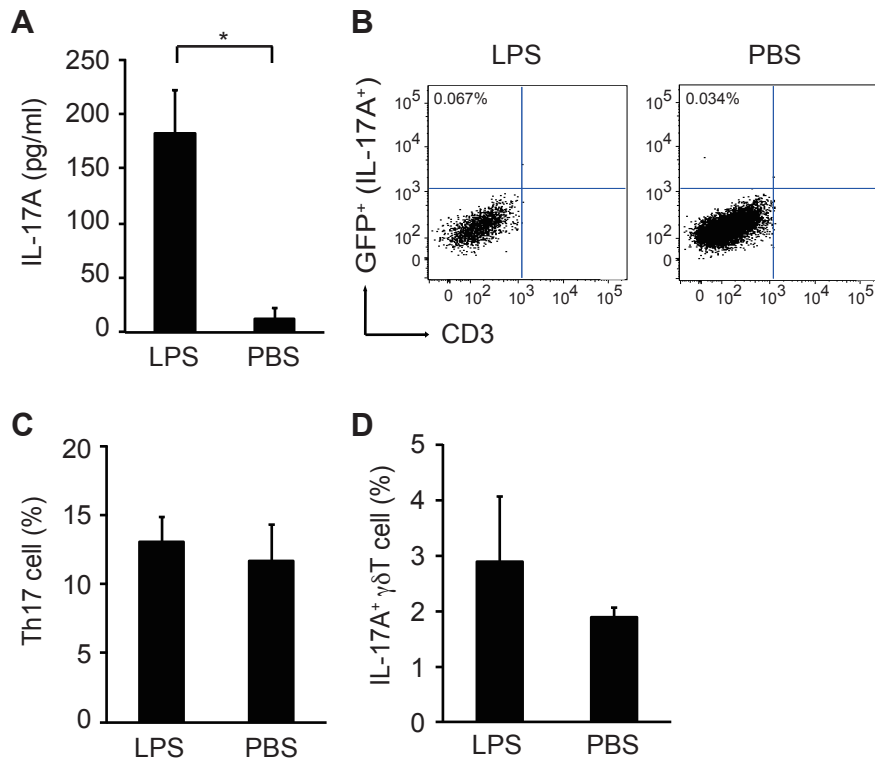


Supplementary Fig. S1. (A) Schematic diagram of the experiment design of LPS-induced MIA model. (B) Serum concentrations of IL-17A after LPS- or PBS- injection on E14.0 was measured by ELISA (n = 3 for all groups except n = 5 for 12 h). Error bars represent SEM.



Supplementary Fig. S2. (A) Serum concentrations of IL-17A of IL-17A-GFP reporter mice at 3 h post-injection of LPS or PBS on E14.0 was measured by ELISA [n = 6 (LPS), n = 3 (PBS)]. (B) Flow cytometric analysis of GFP⁺ (IL-17A⁺) cells including ILC3 cells (Gated as CD45⁺, CD3⁻, CD4⁻, TCRγδ⁻). Proportion of IL-17A⁺ cells are shown. (C) proportion of Th17 cells among CD4⁺ T cells in the small intestine lamina propria at 3 h post-injection of LPS or PBS. (D) proportion of IL-17A⁺ γδ T cells (Gated as CD45⁺, CD3⁺, CD4⁻, TCRγδ⁺) in the small intestine lamina propria at 3 h post-injection of LPS or PBS. Error bars represent SEM. Statistical significance was assessed using Student's *t*-test (**p* < 0.05).