

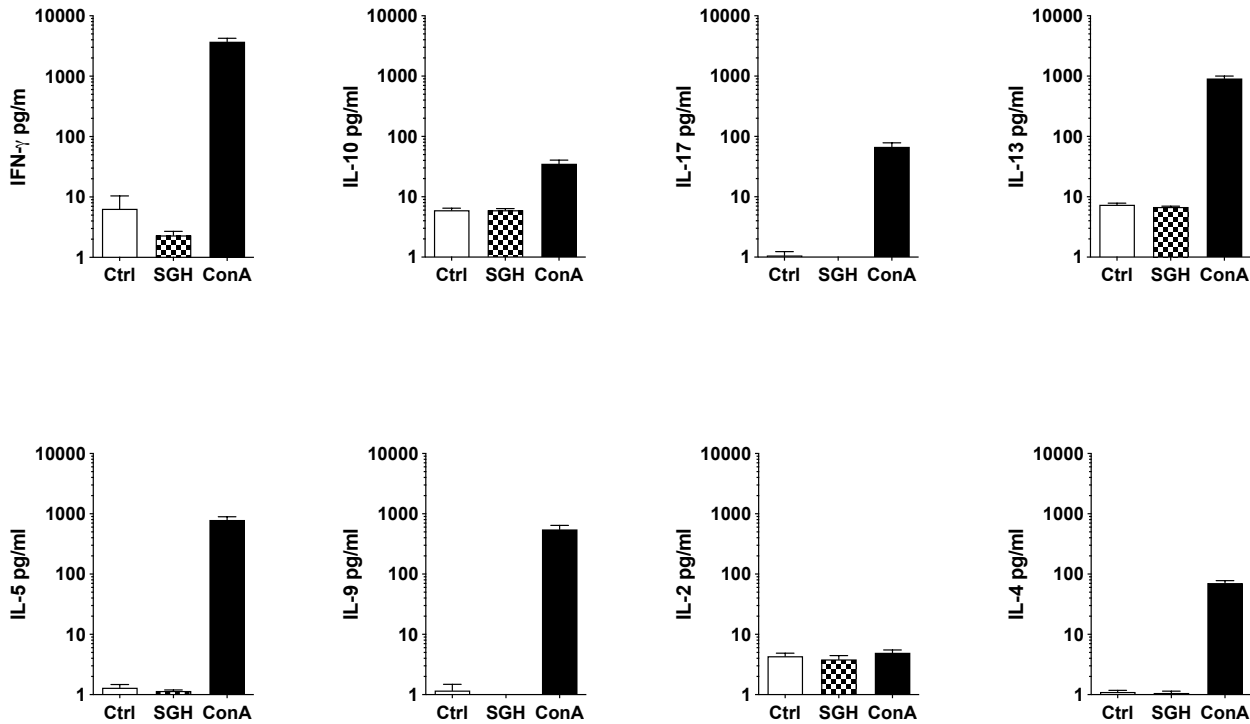
Immunity to vector saliva is compromised by short sand fly seasons in endemic regions with temperate climates

Fabiano Oliveira¹, Ekaterina Giorgobiani^{1,2}, Anderson B. Guimarães-Costa¹, Maha Abdeladhim¹, James Oristian¹, Lamzira Tskhvaradze², Nikoloz Tsertsvadze², Mariam Zakalashvili², Jesus G. Valenzuela^{1*}, and Shaden Kamhawi^{1*}

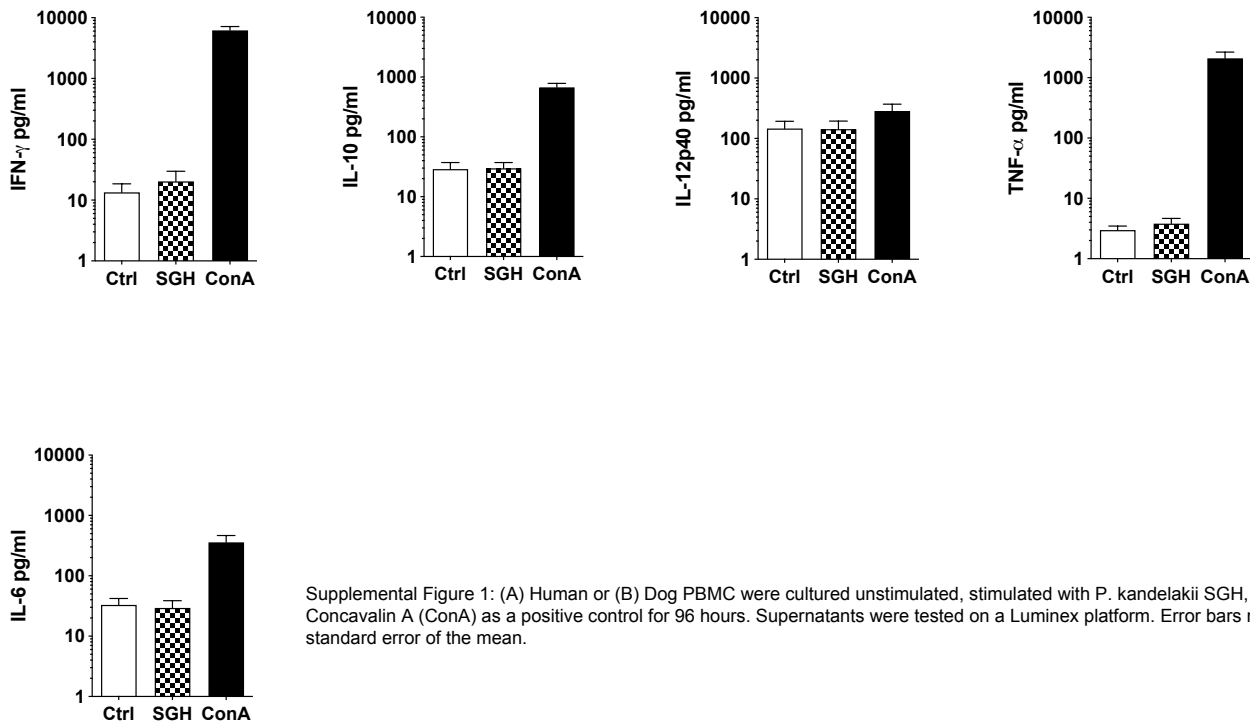
¹Vector Molecular Biology Section, Laboratory of Malaria and Vector Research, National Institute of Allergy and Infectious Diseases, National Institutes of Health, Rockville, Maryland 20852, USA.

²R. G. Lugar Center for Public Health Research, National Center for Disease Control and Public Health (NCDC), Kakheti Highway 99, 0198, Tbilisi, Georgia.

A



B



Supplemental Figure 1: (A) Human or (B) Dog PBMC were cultured unstimulated, stimulated with *P. kandelakii* SGH, or stimulated with Concanavalin A (ConA) as a positive control for 96 hours. Supernatants were tested on a Luminex platform. Error bars represent the standard error of the mean.

