

## SUPPLEMENTARY INFORMATION

Targeting Epigenetics non-coding RNA MALAT1/Wnt signaling axis as a therapeutic approach to suppress stemness and metastasis in hepatocellular carcinoma

**Hang-Lung Chang**<sup>1,2†</sup>, **Oluwaseun Adebayo Bamodu**<sup>3,4</sup>, **Jiann-Ruey Ong**<sup>5,6†</sup>, **Wei-Hwa Lee**<sup>7</sup>, **Chi-Tai Yeh**<sup>3,4,8</sup> and **Jo-Ting Tsai**<sup>9,10,11\*</sup>

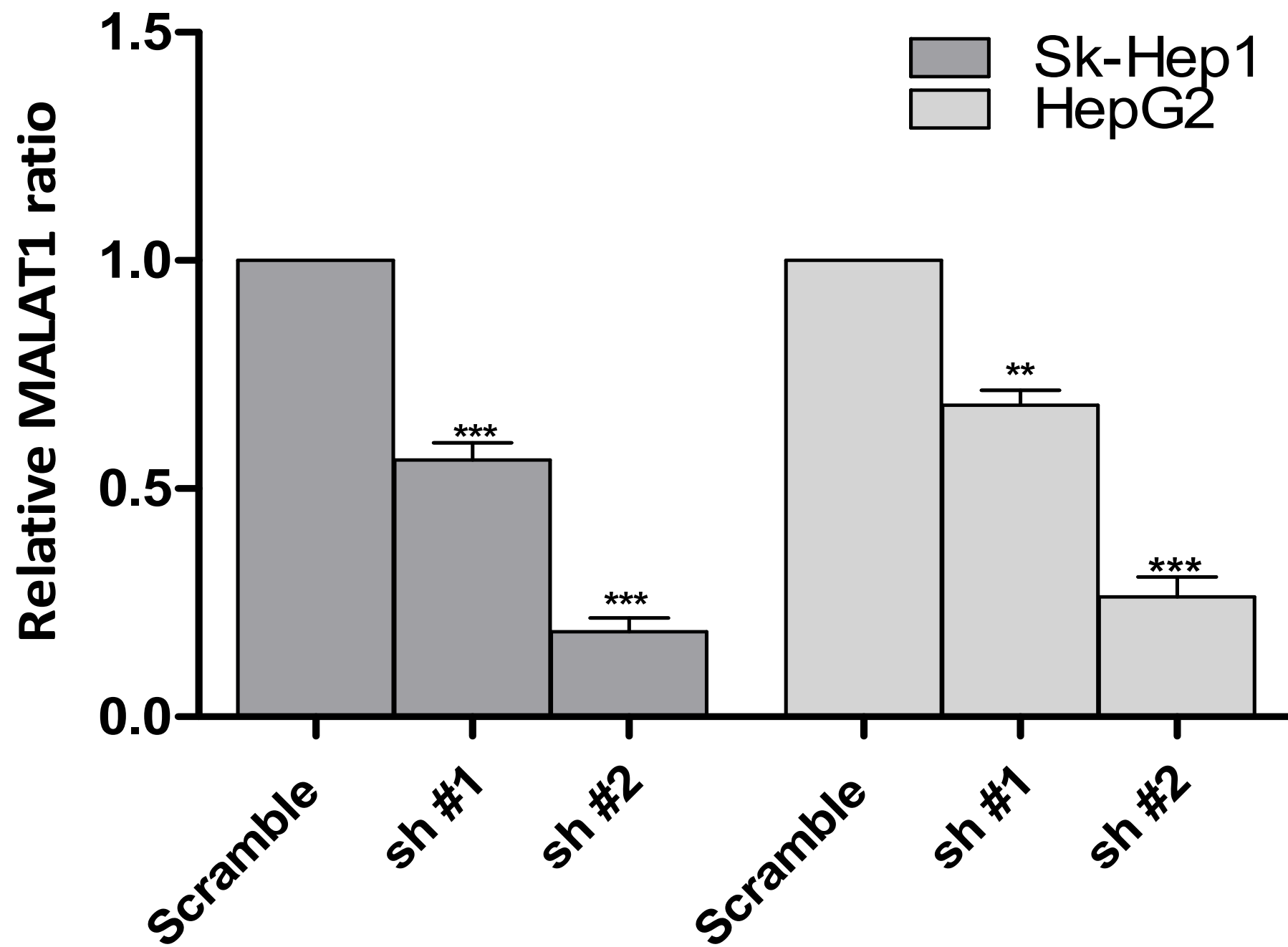
1. Department of General Surgery, En Chu Kong Hospital, New Taipei City, Taiwan;
2. Department of Health Care Management, Yuanpei University of Medical Technology, Hsinchu, Taiwan;
3. Department of Hematology and Oncology, Cancer Center, Taipei Medical University - Shuang Ho Hospital, New Taipei City, Taiwan;
4. Department of Medical Research and Education, Taipei Medical University - Shuang Ho Hospital, New Taipei City, Taiwan;
5. Department of Emergency Medicine, School of Medicine, Taipei Medical University, Taipei.
6. Department of Emergency Medicine, Shuang-Ho Hospital-Taipei Medical University, New Taipei City.
7. Department of Pathology, Taipei Medical University-Shuang Ho Hospital, New Taipei City, Taiwan.
8. Department of Medical Laboratory Science and Biotechnology, Yuanpei University of Medical Technology, Hsinchu, Taiwan;
9. Department of Radiology, School of Medicine, College of Medicine, Taipei Medical University, Taipei, Taiwan;
10. Department of Radiology, Taipei Medical University - Shuang Ho Hospital, New Taipei City, Taiwan.
11. Graduate Institute of Clinical Medicine, College of Medicine, Taipei Medical University, Taipei City, Taiwan.

† Contributed equally to this work

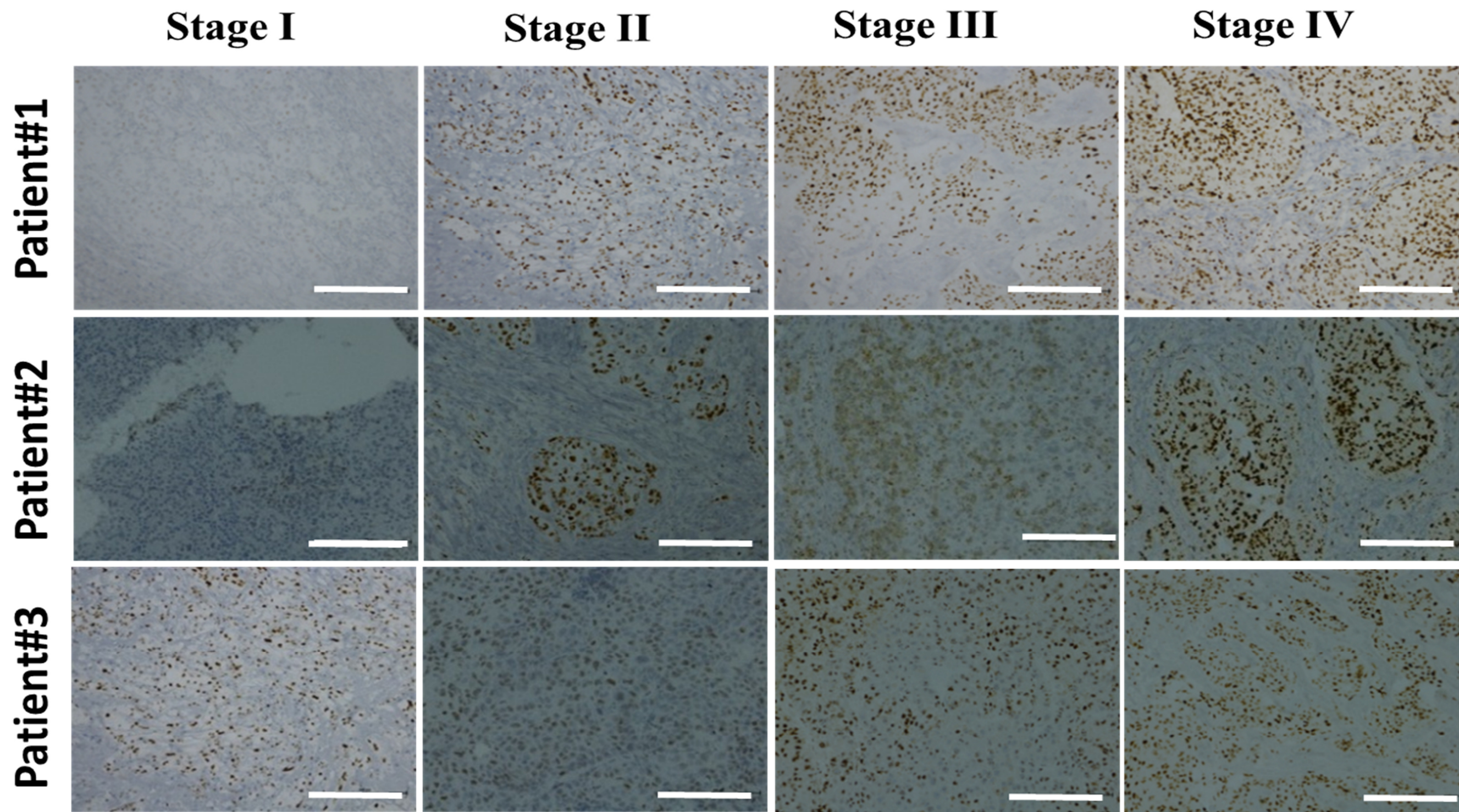
\*Correspondence: Jo-Ting Tsai, e-mail: 10576@s.tmu.edu.tw; Tel: +886-(2)-2490088 (ext. 8885); Fax: +886-2-2248-0900

**Supplementary Table S1.** Western blot antibodies sheet.

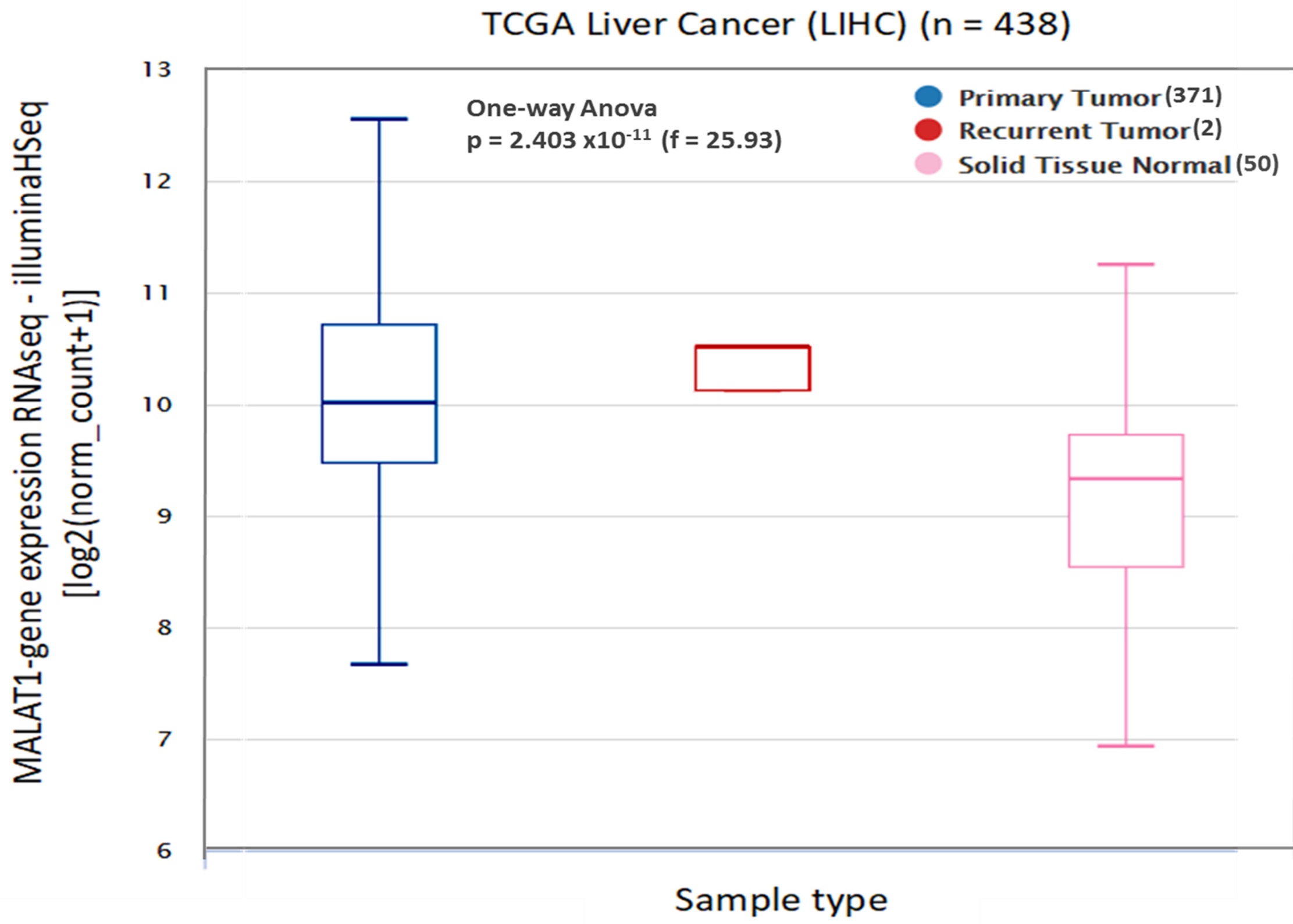
<b>No.</b>	<b>Target</b>	<b>Dilution</b>	<b>Catalog</b>	<b>kDa</b>
1	CD133	1:1000	#MAB4310	120
2	ALDH1	1:1000	ALDH1A1 (D4R9V) Rabbit mAb #12035	55
3	$\beta$ -catenin	1:1000	$\beta$ -Catenin (6B3) Rabbit mAb #9582P	92
4	GAPDH	1:1000	GAPDH Antibody (0411) (sc-47724)	37
5	P-Stat3	1:1000	Phospho-Stat3 (Tyr705) (D3A7) XP® Rabbit mAb	79,86
6	Stat3	1:1000	Stat3 (79D7) Rabbit mAb #4904	79,86
7	c-Myc	1:500	c-Myc Antibody (9E10) (sc-40)	55
8	CK19	1:1000	CK19 monoclonal antibody SAB3300019	43.9
9	Vimentin	1:1000	Anti-Vimentin antibody (ab137321)	57
10	Twist1	1:1000	Twist (Twist2C1a) Antibody sc-81417	28
11	Cyclin D1	1:1000	Cyclin D1 Antibody (A-12) (sc-8396)	38
12	Axin2	1:1000	Axin2 Antibody SAB3500619	93
13	LEF1	1:1000	LEF1 (C12A5) Rabbit mAb #2230	25~58
14	DKK1	1:1000	DKK1 Antibody #4687	30,35
15	$\beta$ -actin	1:10000	$\beta$ -Actin (8H10D10) Mouse mAb #3700	42



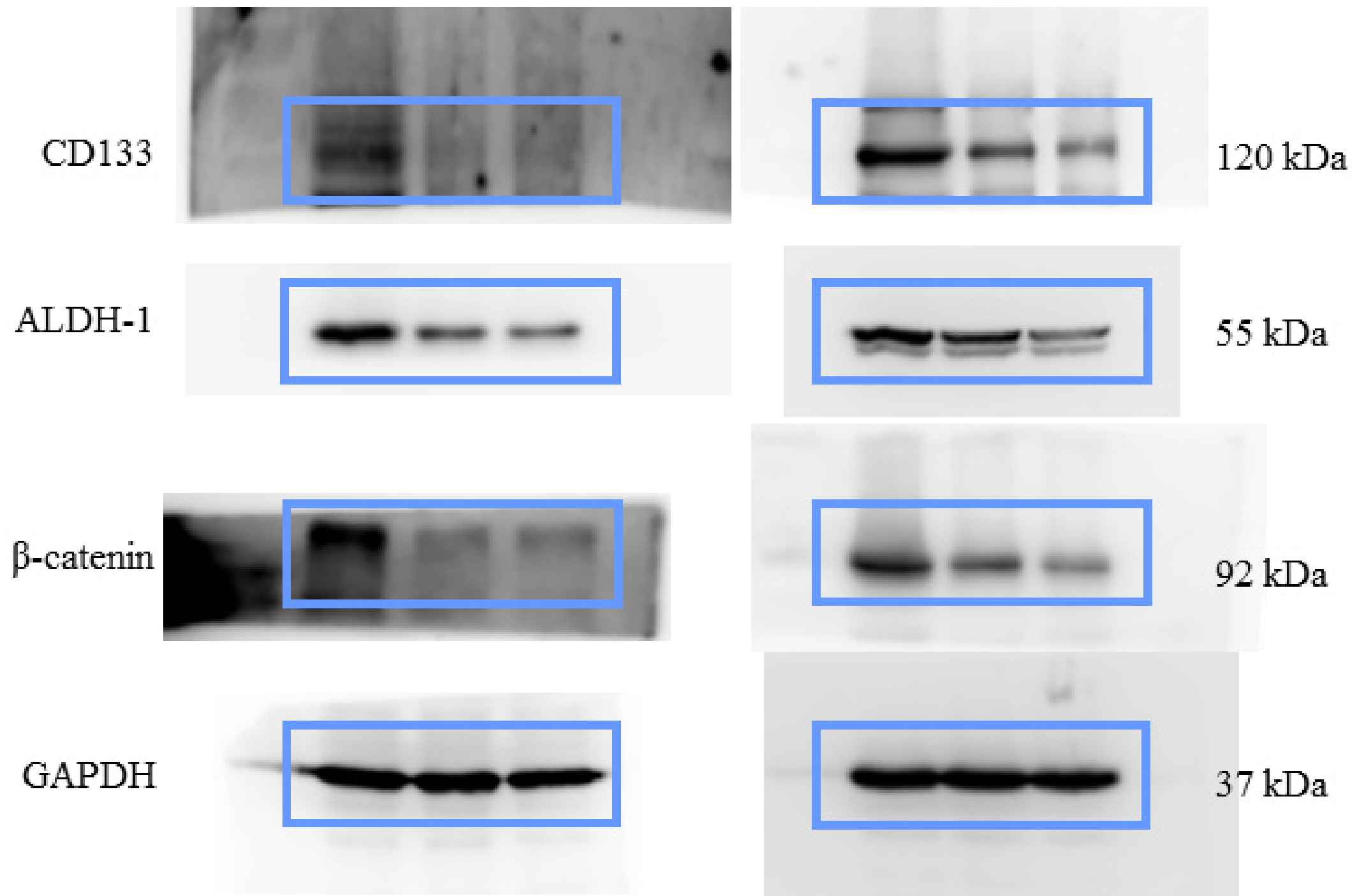
Supplementary Figure S1



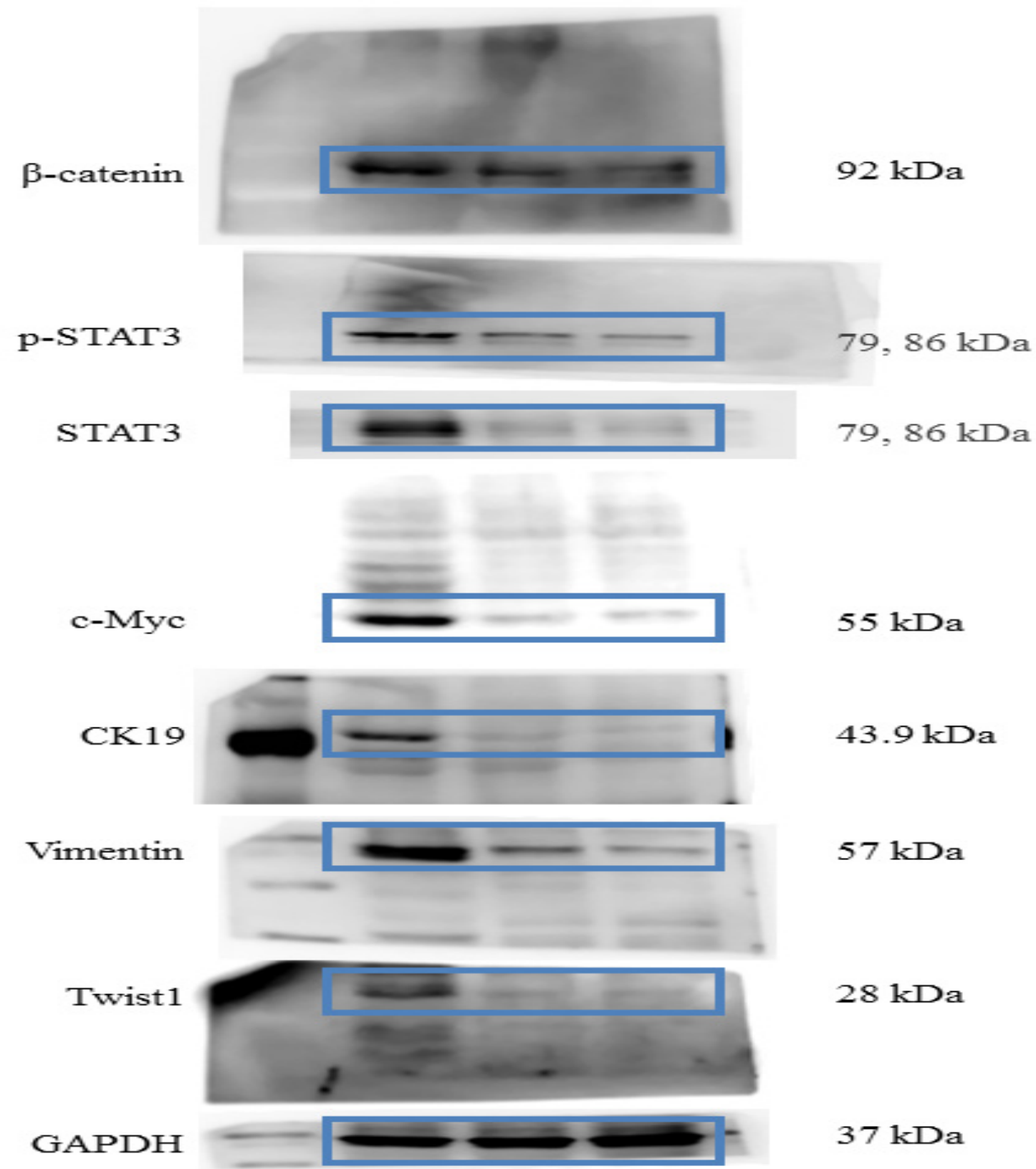
Supplementary Figure S2



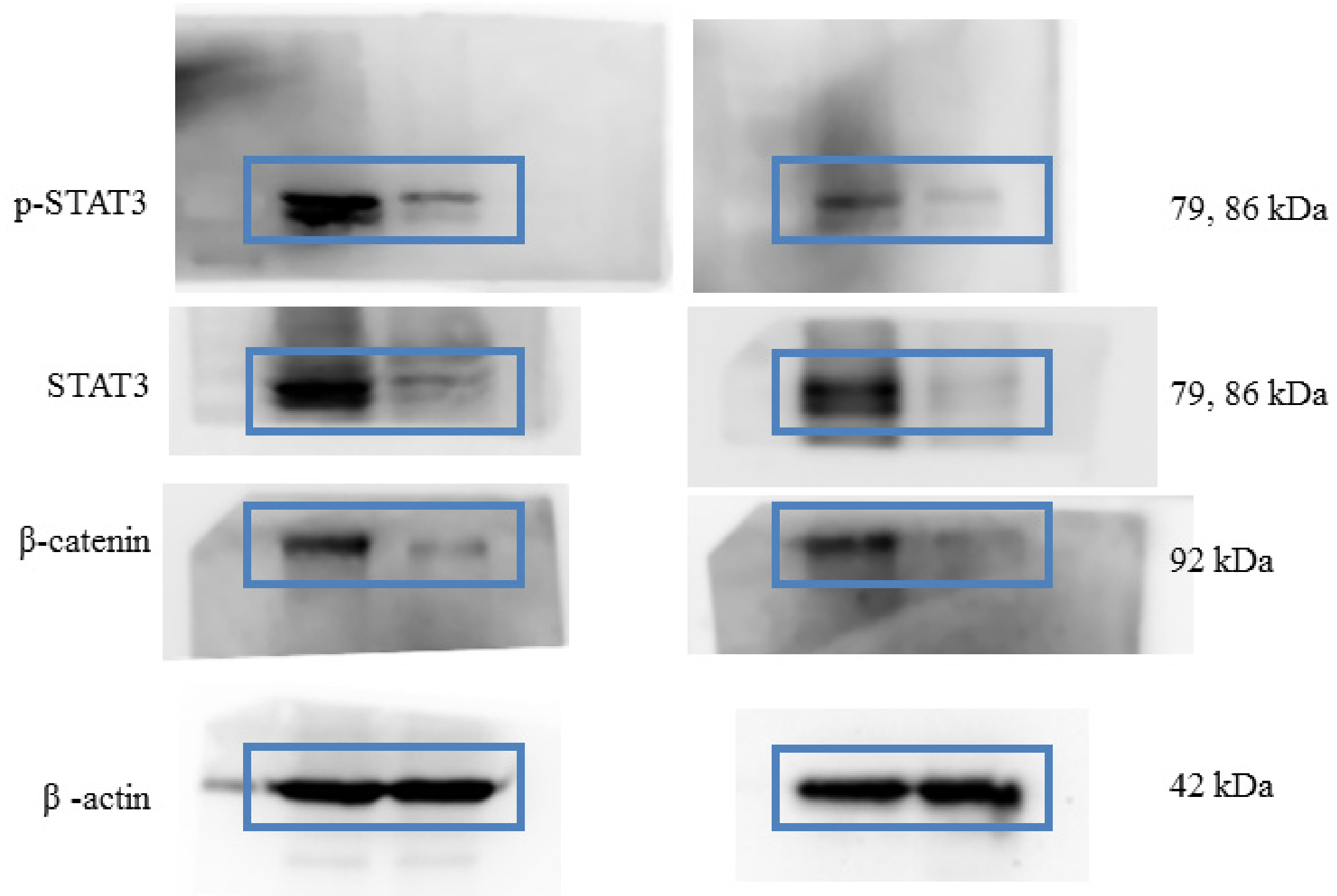
Supplementary Figure S3



**Supplementary Figure S4.** Full-size blots of Figure 3B

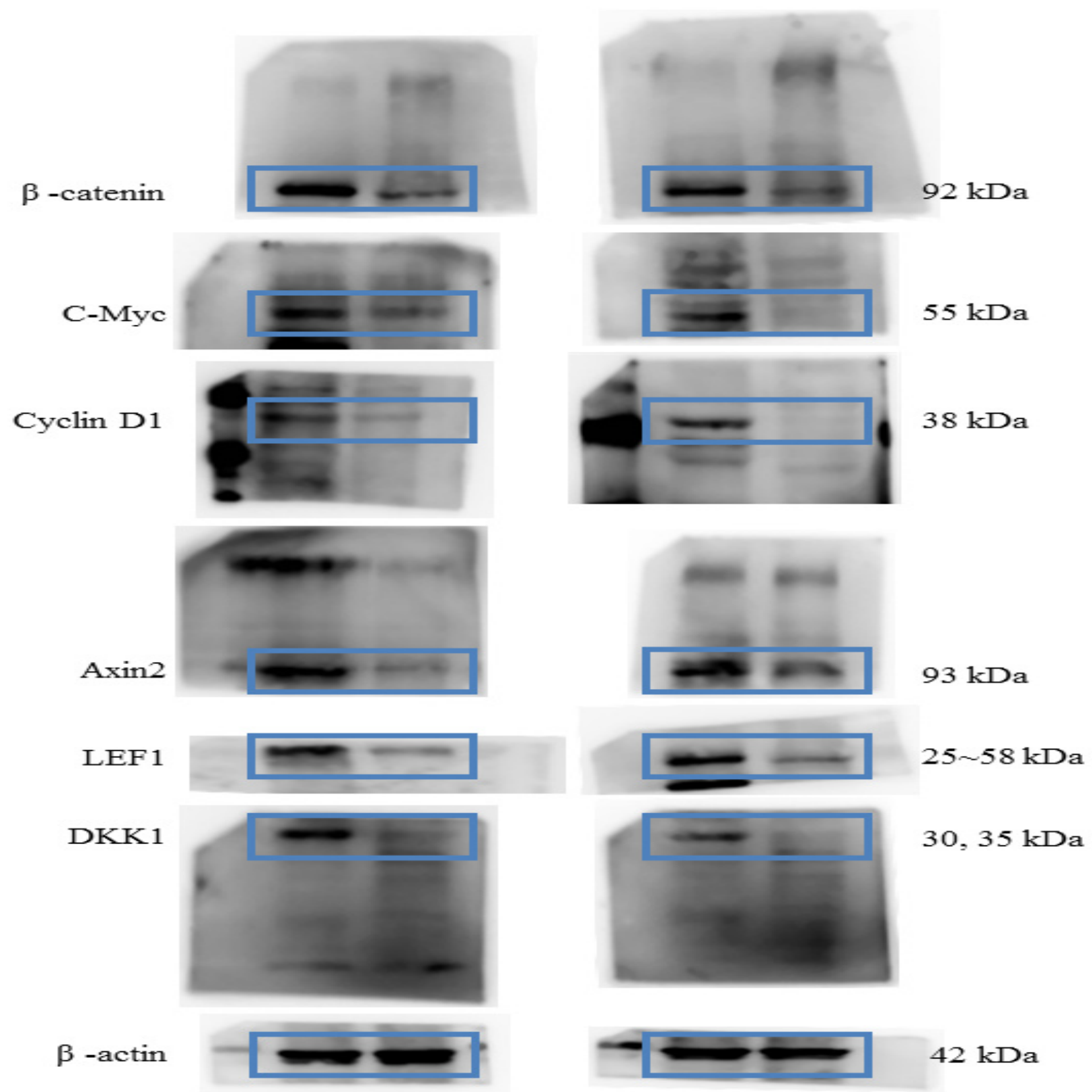


**Supplementary Figure S5.** Full-size blots of Figure 3D



**Supplementary Figure S6.** Full-size blots of Figure 4C





**Supplementary Figure S7.** Full-size blots of Figure 4D