

Supporting Information

Amphiphilic Rhenium-Oxo Corroles as a New Class of Sensitizers for Photodynamic Therapy

Rune F. Einrem,^a Abraham B. Alemayehu,^a Sergey M. Borisov,^{*,b}

Abhik Ghosh^{*,a} and Odrun A. Gederaas^{*,c}

^a Department of Chemistry, UiT – The Arctic University of Norway, N-9037 Tromsø, Norway

^b Institute of Analytical Chemistry and Food Chemistry, Graz University of Technology, Stremayrgasse 9, 8010 Graz, Austria

^c Department of Clinical and Molecular Medicine and Department of Physics, Norwegian University of Science and Technology, NTNU, N-7491 Trondheim, Norway

* Correspondence: sergey.borisov@tugraz.at (SMB), abhik.ghosh@uit.no (AG), odrun.gederaas@ntnu.no (OAG)

Content	Page
A. UV-vis spectra	2
B. Phosphorescence decays	4
C. Singlet oxygen assays	7
D. ¹ H NMR spectra	8
E. ESI mass spectra	10
F. FT-IR spectra	12

A. UV-vis spectra

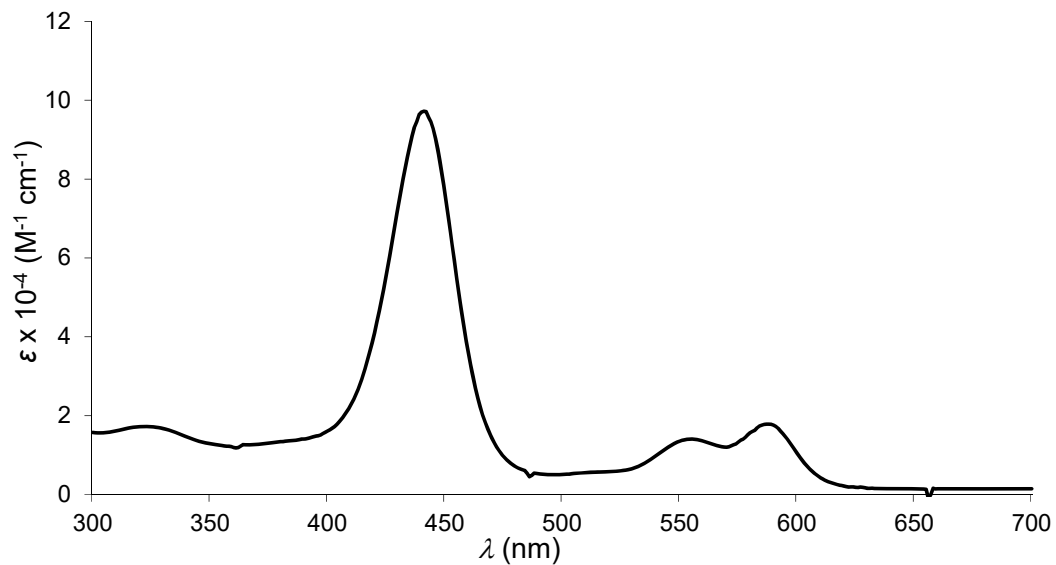


Figure S1. UV-vis spectrum in DCM of $\text{Re}[\text{TpCO}_2\text{CH}_3\text{PC}](\text{O})$.

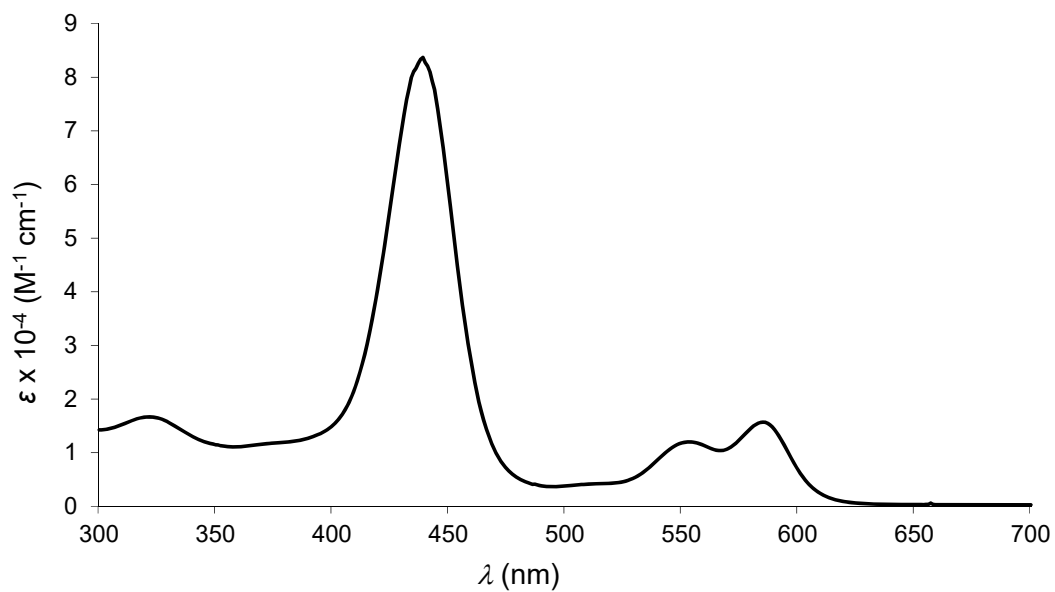


Figure S2. UV-vis spectrum in DCM of $\text{Re}[\text{TmCO}_2\text{CH}_3\text{PC}](\text{O})$.

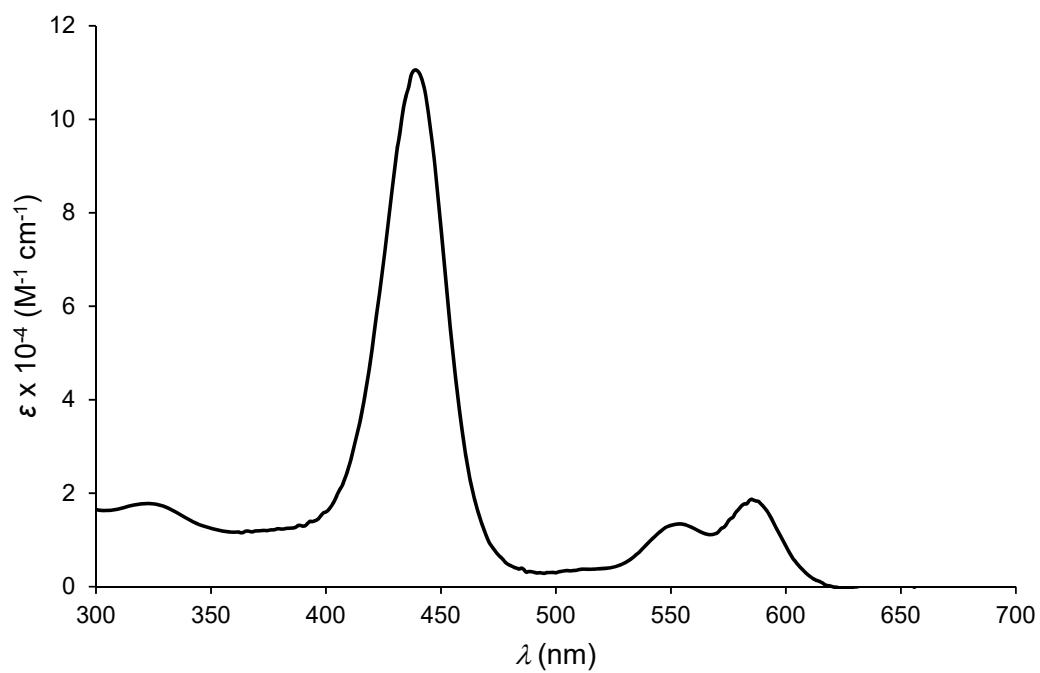


Figure S3. UV-vis spectrum in DCM of $\text{Re}[p\text{TCPC}](\text{O})$.

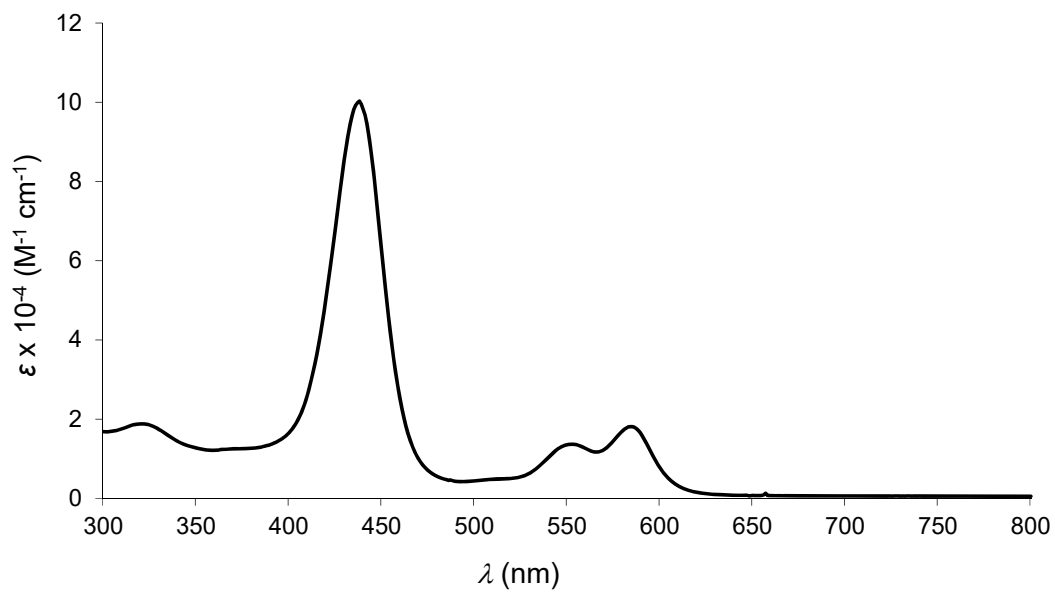


Figure S4. UV-vis spectrum in DCM of $\text{Re}[m\text{TCPC}](\text{O})$.

B. Phosphorescence decays

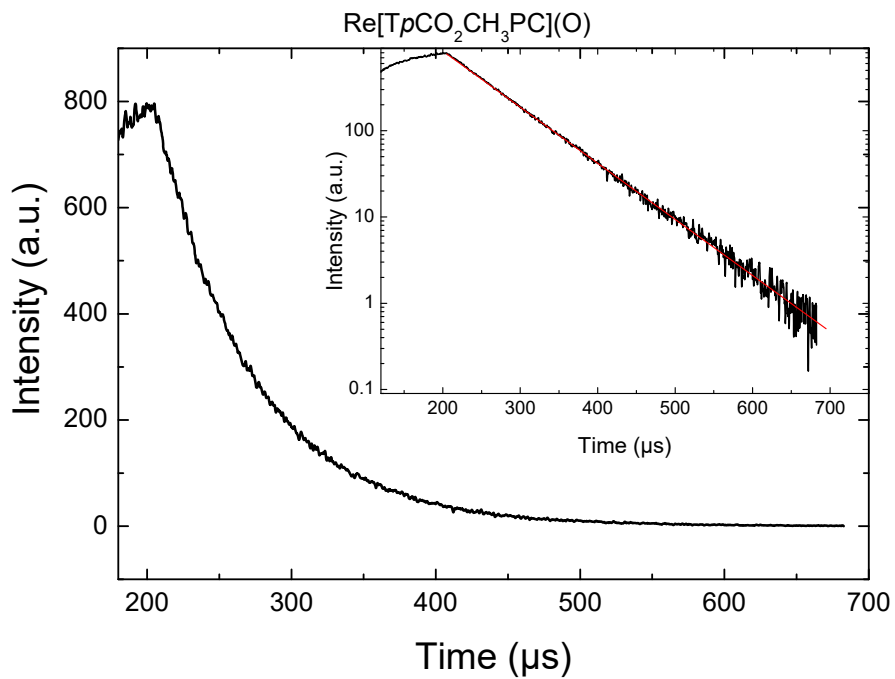


Figure S5. Phosphorescence decay of $\text{Re}[\text{TpCO}_2\text{CH}_3\text{PC}](\text{O})$ in anoxic toluene. The inset shows the logarithmic plot.

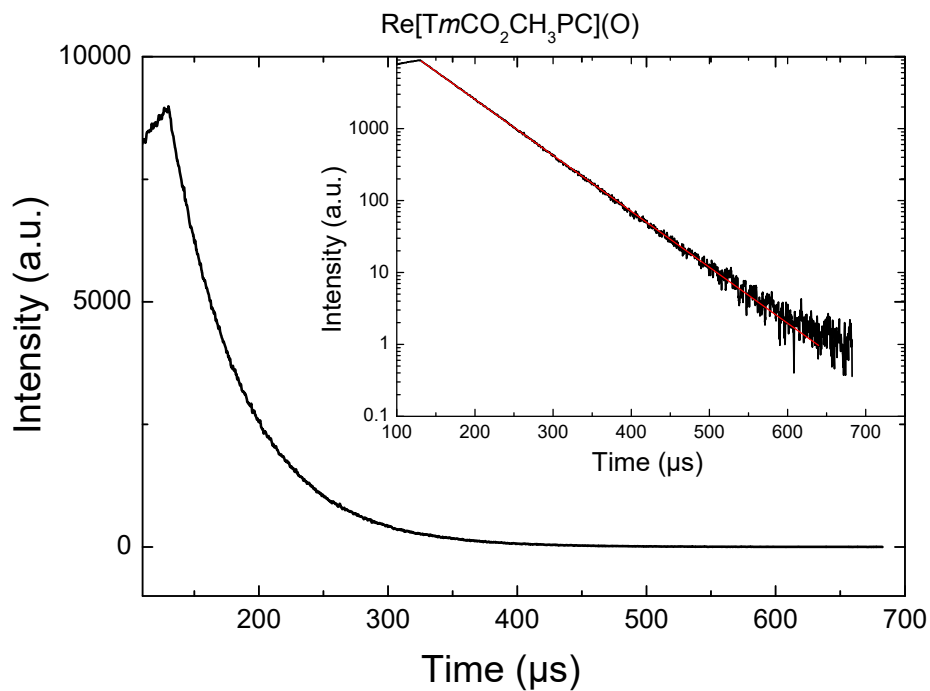


Figure S6. Phosphorescence decay of $\text{Re}[\text{TmCO}_2\text{CH}_3\text{PC}](\text{O})$ in anoxic toluene. The inset shows the logarithmic plot.

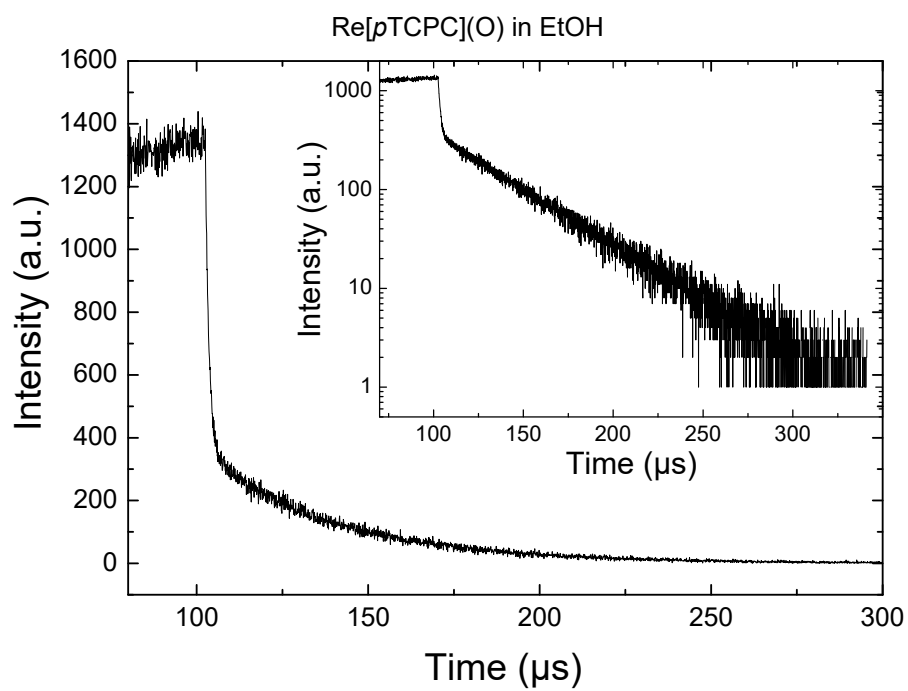


Figure S7. Phosphorescence decay of Re[pTCPC](O) in anoxic ethanol. The inset shows the logarithmic plot.

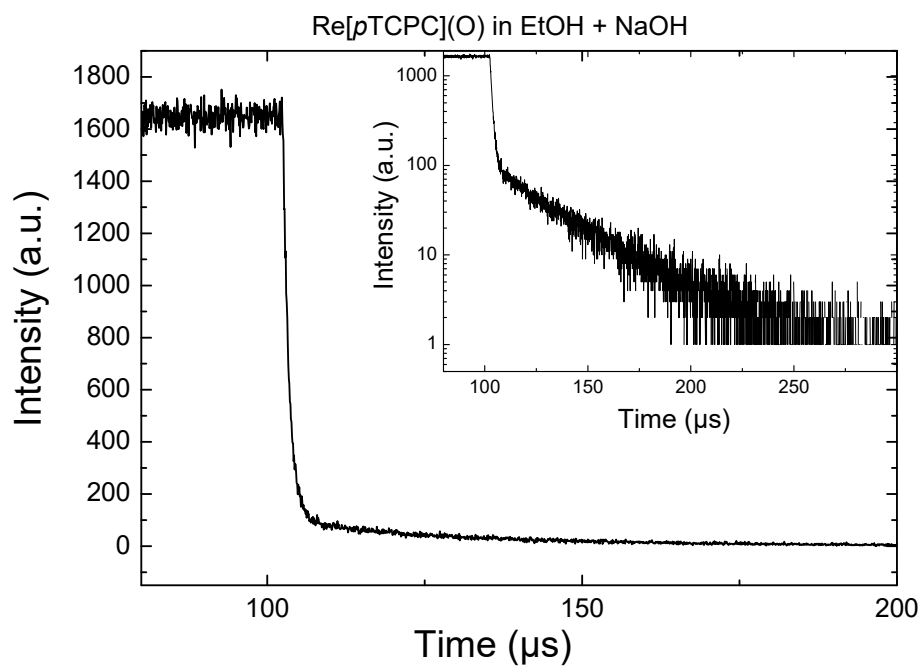


Figure S8. Phosphorescence decay of Re[pTCPC](O) in anoxic ethanol with added NaOH ($3 \cdot 10^{-3}$ M). The inset shows the logarithmic plot.

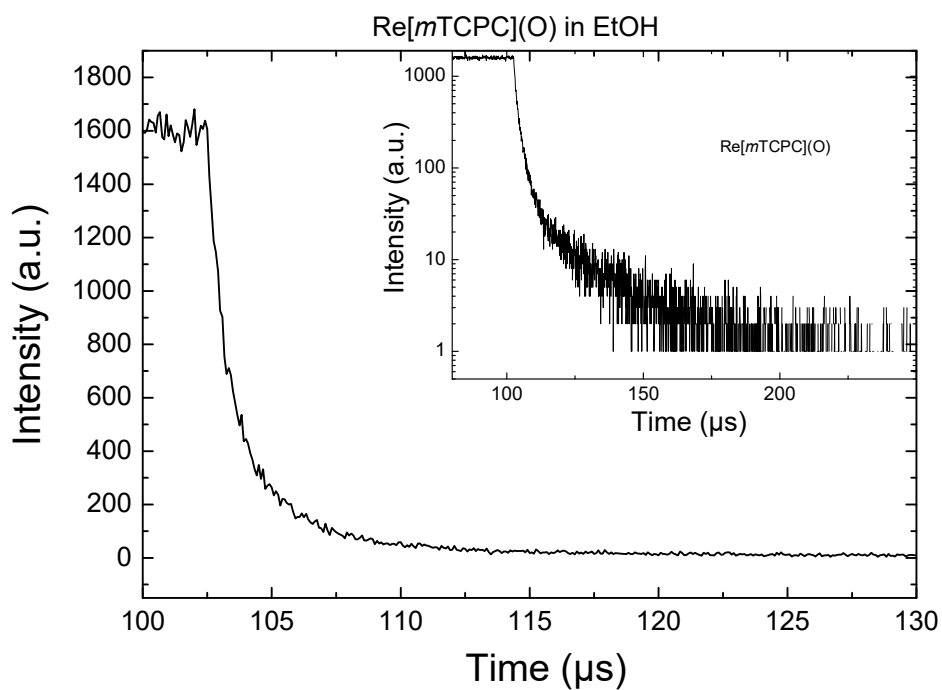


Figure S9. Phosphorescence decay of Re[mTCPC](O) in anoxic ethanol. The inset shows the logarithmic plot.

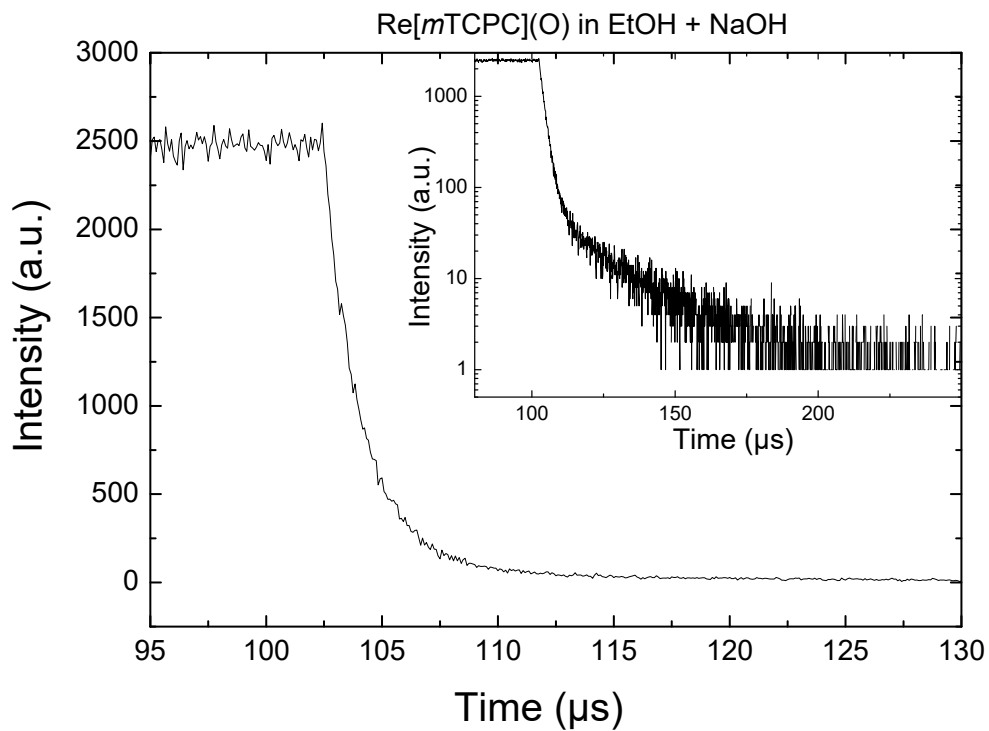


Figure S10. Phosphorescence decay of Re[mTCPC](O) in anoxic ethanol with added NaOH ($3 \cdot 10^{-3}$ M). The inset shows the logarithmic plot.

C. Singlet oxygen assay

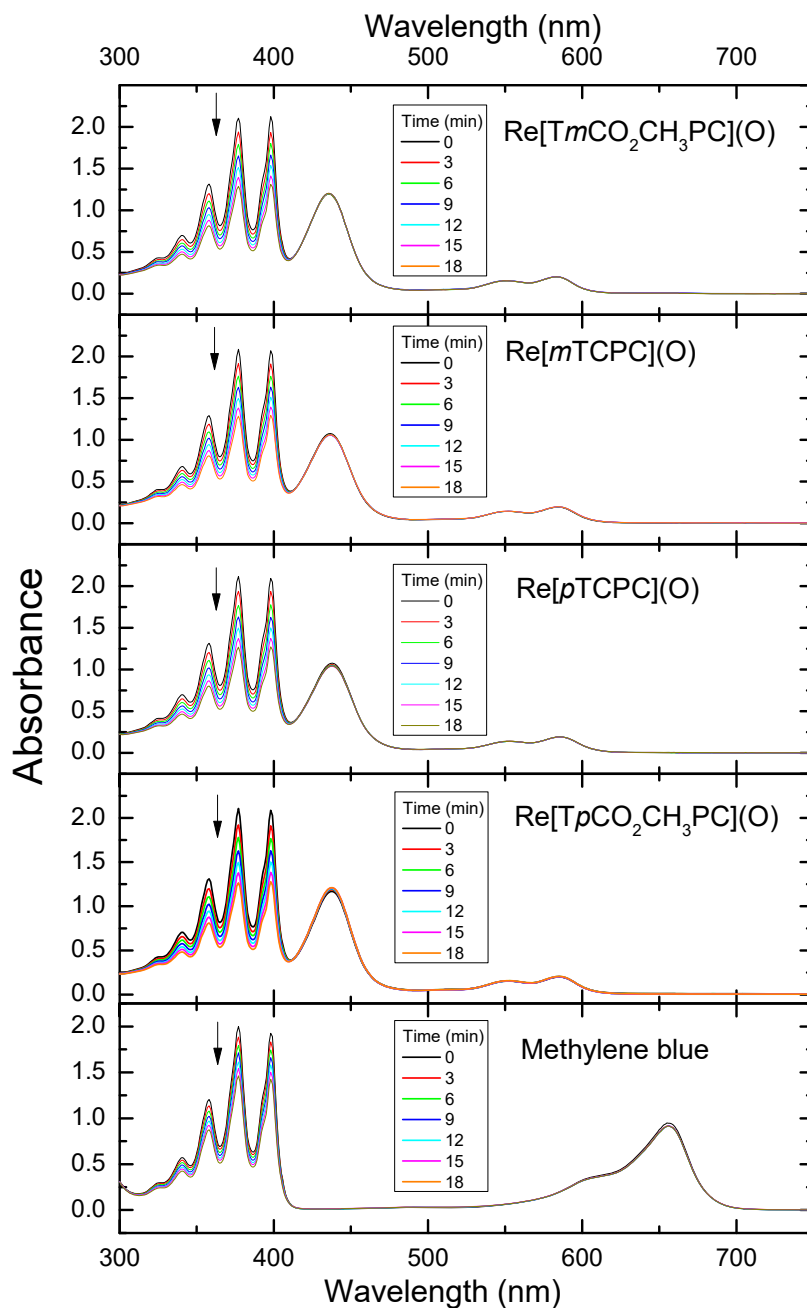


Figure S11. UV-vis spectra of air-saturated solutions containing 9,10-dimethylantracene and a sensitizer upon irradiation with 595 ± 5 nm light.

D. ^1H NMR spectra

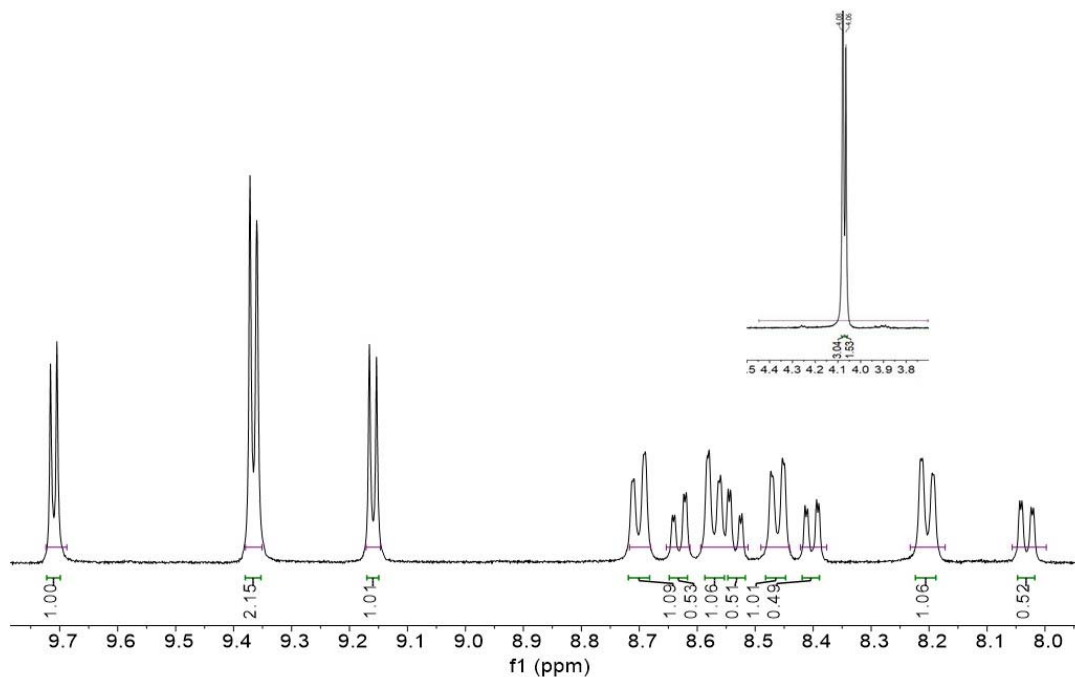


Figure S12. ^1H NMR (400 Hz, CD_2Cl_2 , -20°C) spectrum of $\text{Re}[\text{TpCO}_2\text{CH}_3\text{PC}](\text{O})$.

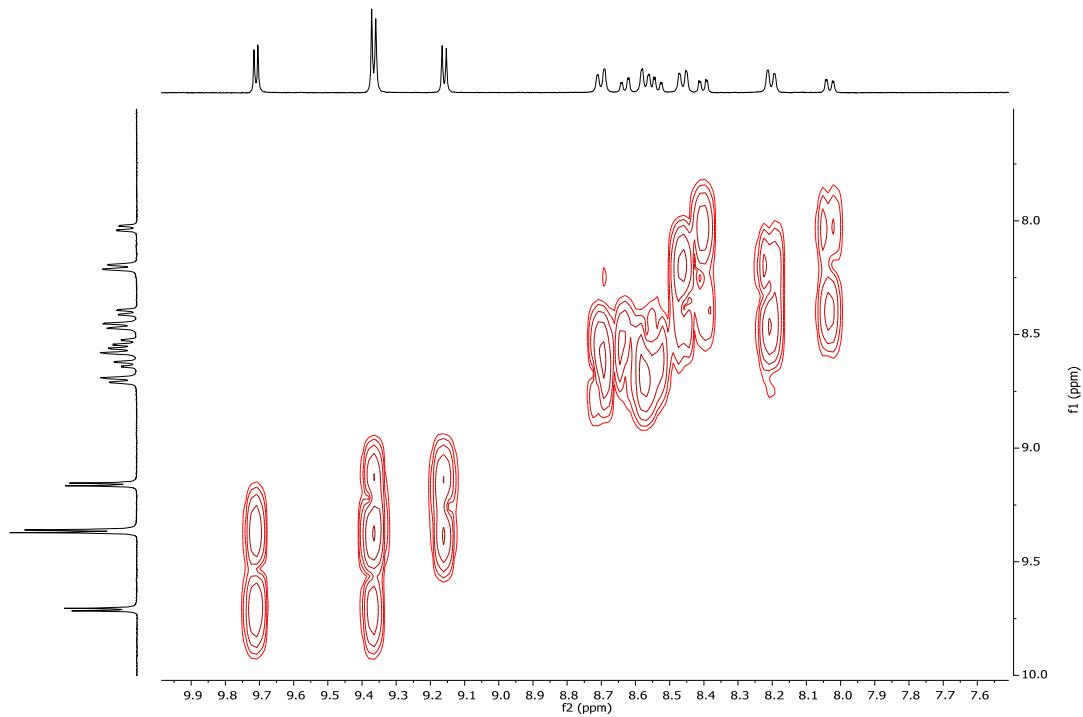


Figure S13. COSY (400Hz CD_2Cl_2 , -20°C) of $\text{Re}[\text{TpCO}_2\text{CH}_3\text{PC}](\text{O})$.

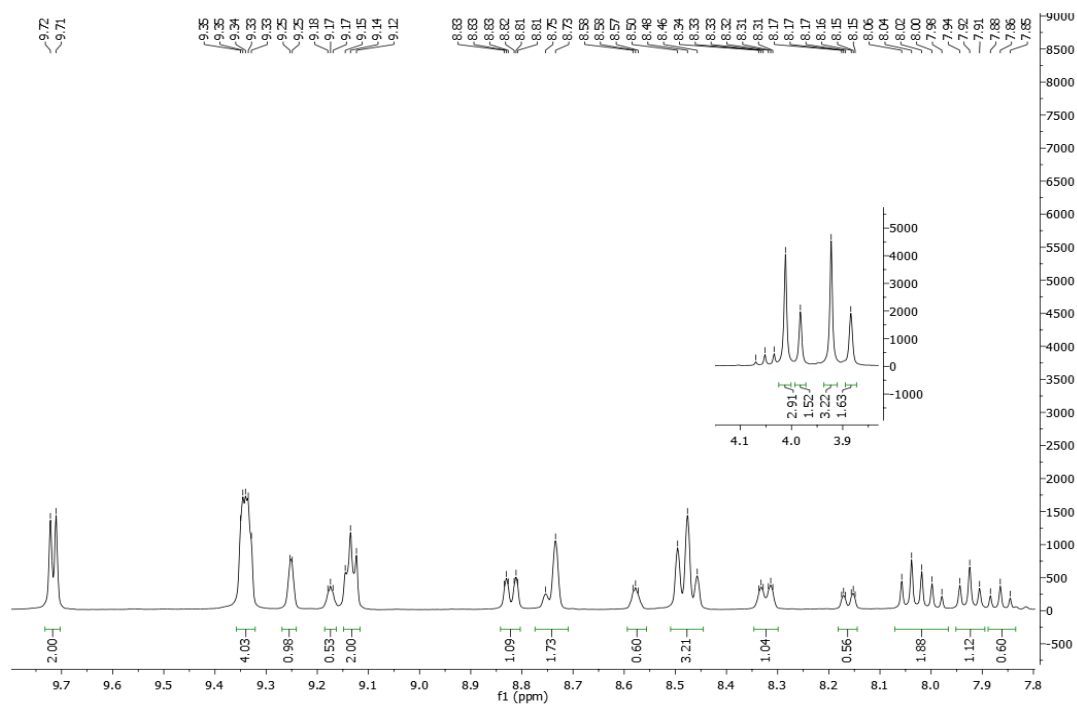


Figure S14. ^1H NMR (400 Hz, CD_2Cl_2 , -20°C) spectrum of $\text{Re}[\text{TmCO}_2\text{CH}_3\text{PC}](\text{O})$.

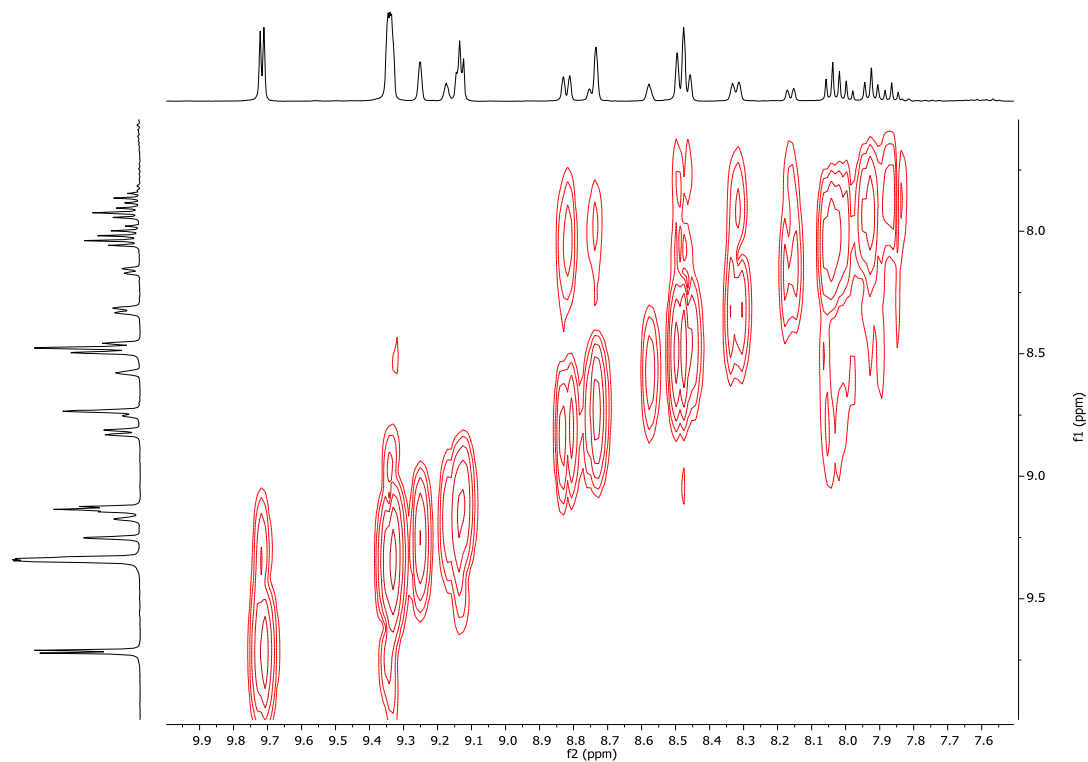


Figure S15. COSY (400Hz, CD_2Cl_2 , -20°C) of $\text{Re}[\text{TmCO}_2\text{CH}_3\text{PC}](\text{O})$.

E. ESI mass spectra

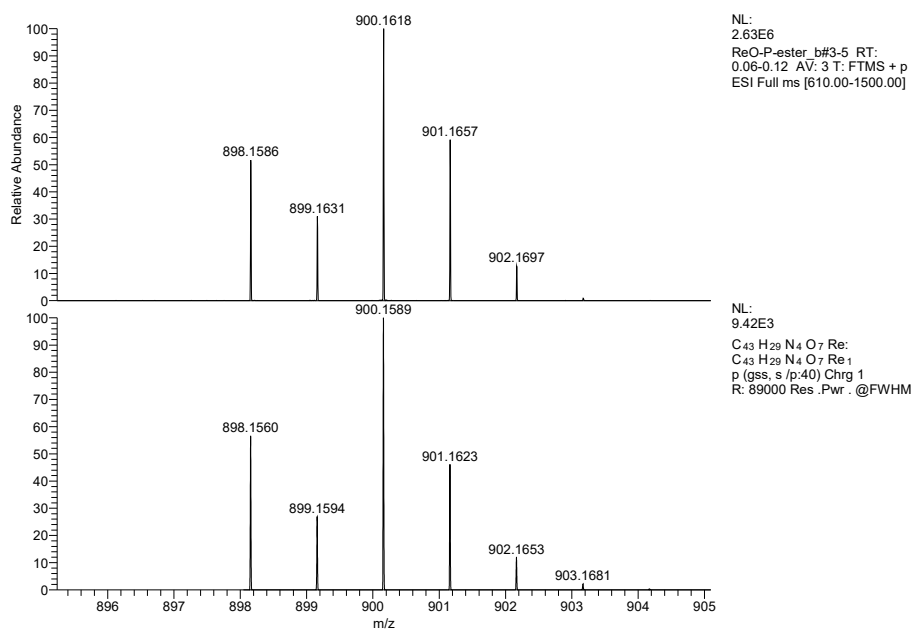


Figure S16. ESI-MS of Re[*TP*CO₂CH₃PC](O).

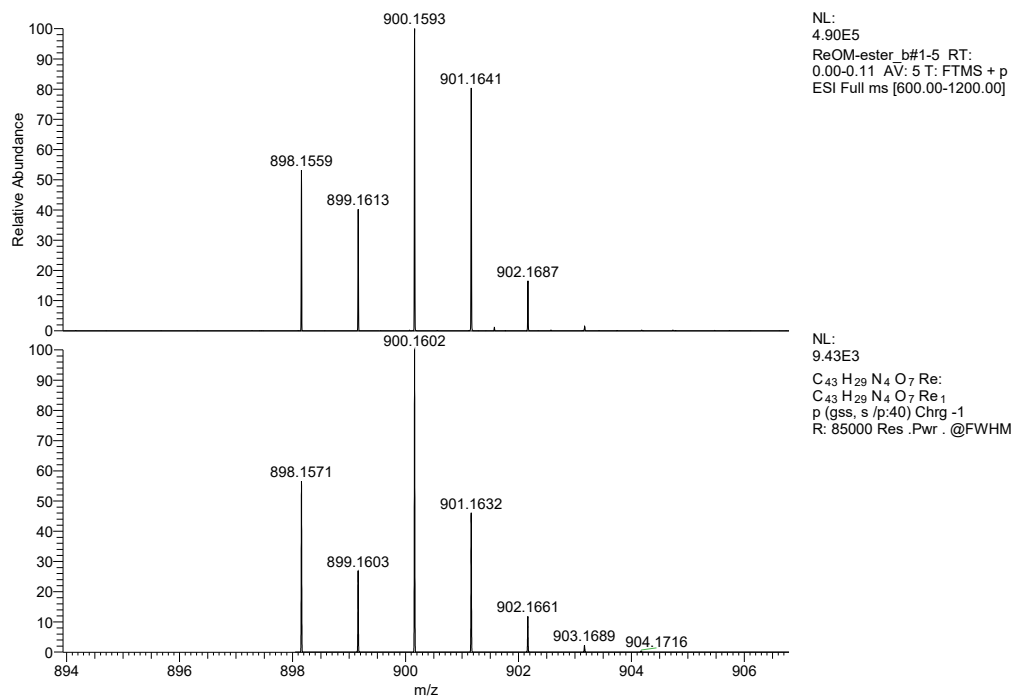


Figure 17. ESI-MS of Re[*Tm*CO₂CH₃PC](O).

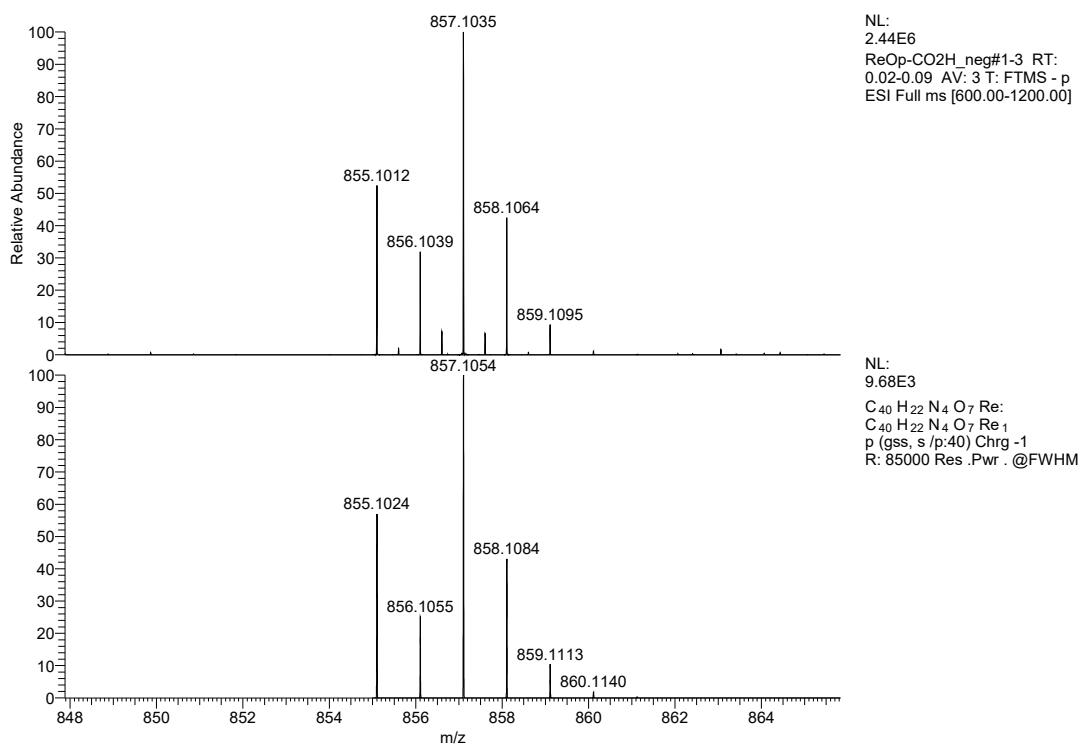


Figure S18. ESI-MS of Re[pTCPC](O).

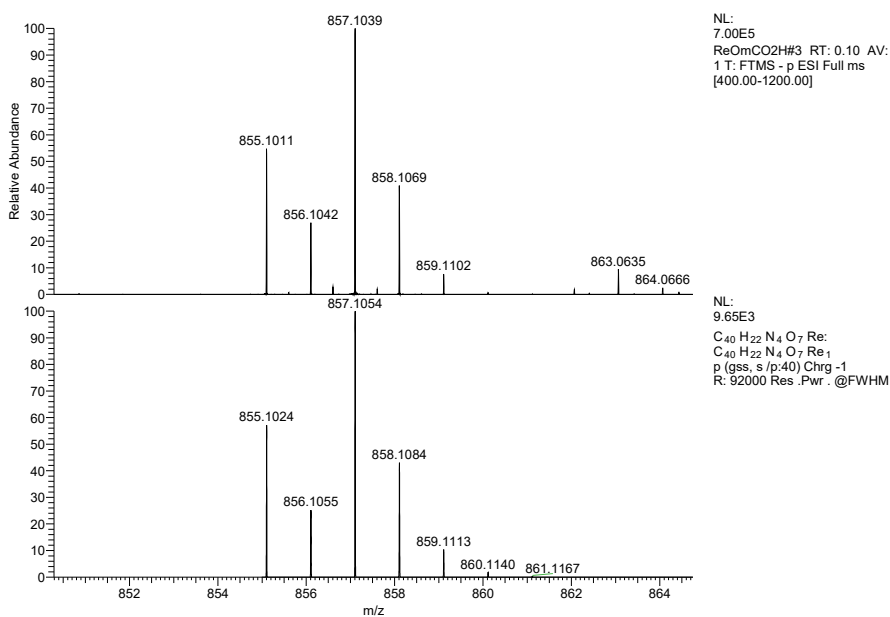


Figure S19. ESI-MS of Re[mTCPC](O).

F. FT-IR spectra

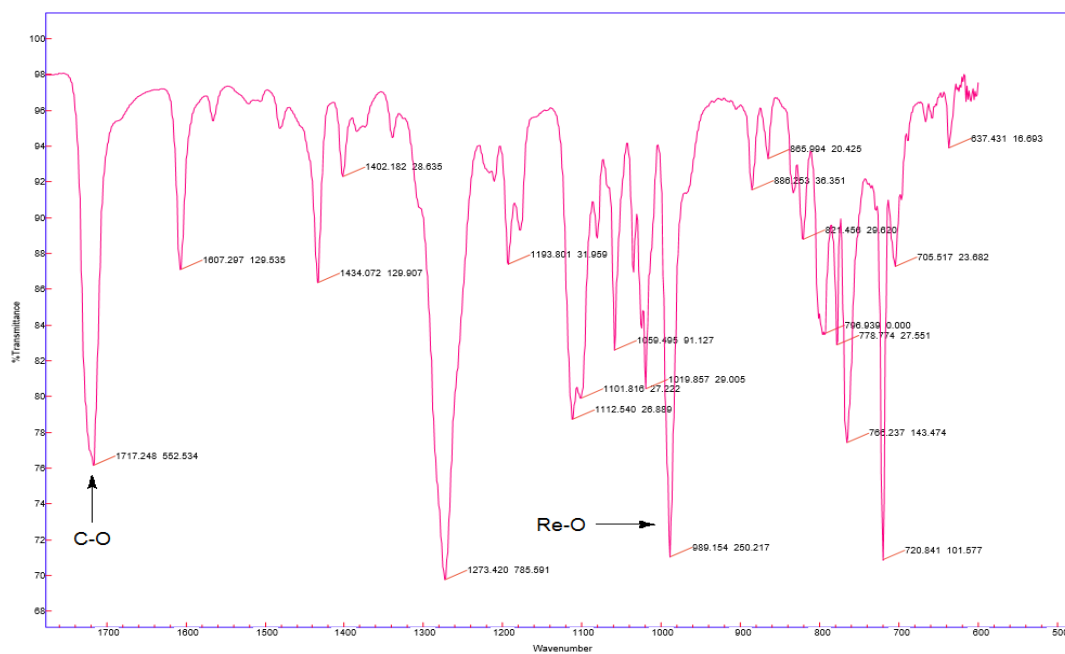


Figure S20. IR spectrum of $\text{Re}[\text{TpCO}_2\text{CH}_3\text{PC}](\text{O})$.

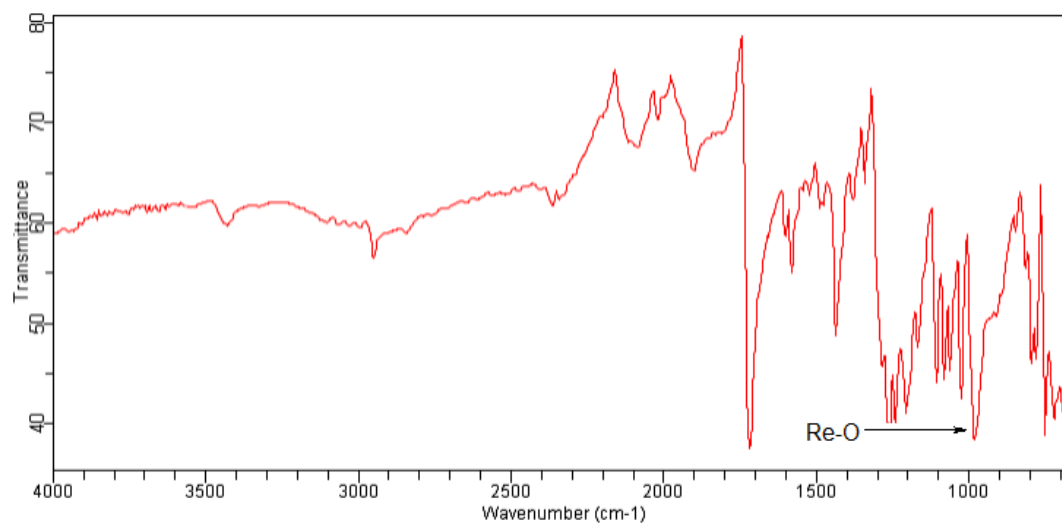


Figure S21. IR spectrum of $\text{Re}[\text{TmCO}_2\text{CH}_3\text{PC}](\text{O})$.

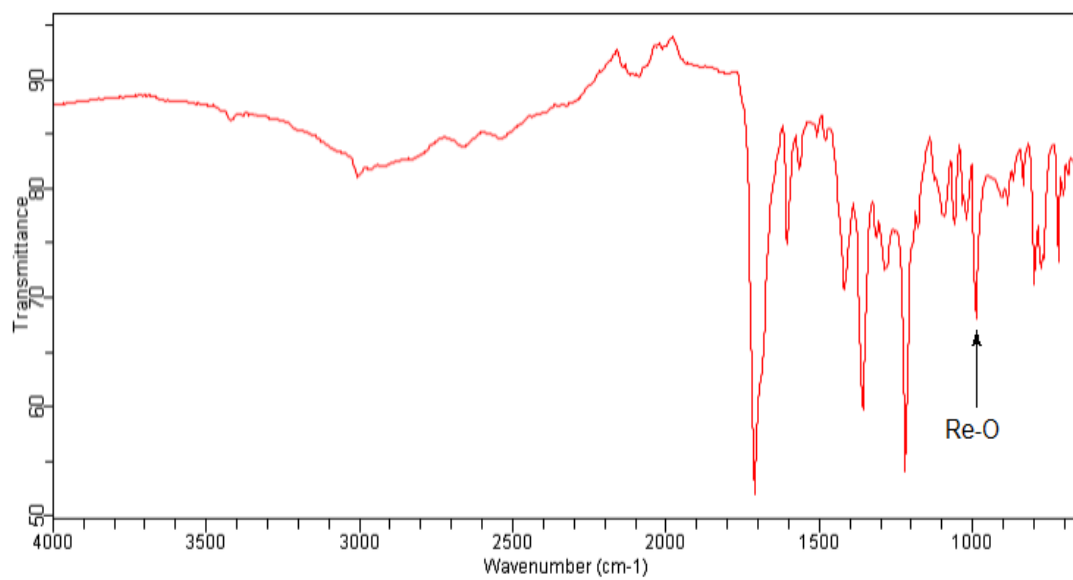


Figure S22. IR spectrum of Re[pTCPC](O).

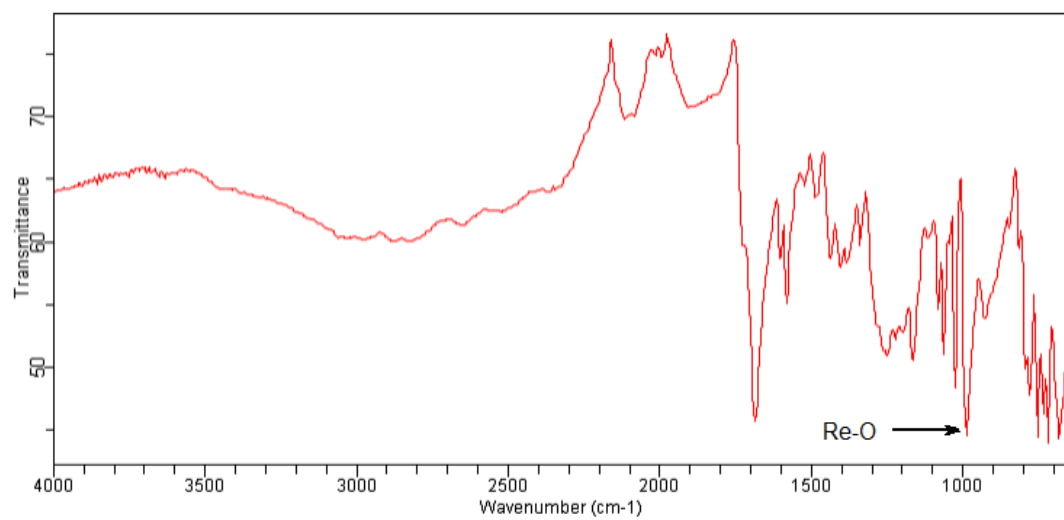


Figure S23. IR spectrum of Re[mTCPC](O).