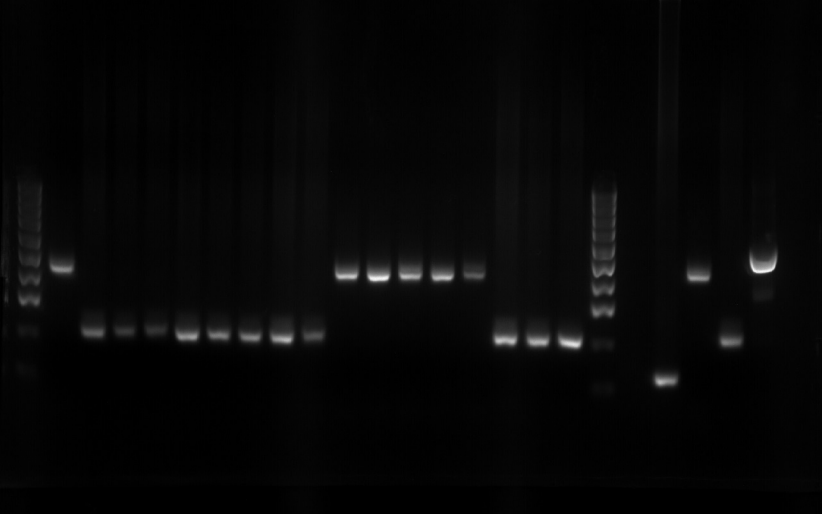


- 1. 100 Bp Ladder
- 2. 004-pk
- 3. 011-P sp.
- 4. 016-pf
- 5. 029-pv
- 6. 037-pk
- 7. 041-P sp.
- 8. 050-pf
- 9. 100 Bp Ladder
- 10. Negative Control
- 11. *P. vivax* (121 Bp)
- 12. *P. knowlesi* (450 Bp)
- 13. *P. falciparum* (206 Bp)
- 14. *Plasmodium Sp.* (600-700 Bp)
- 15. X
- 16. X
- 17. X

1 2 3 4 5 6 7 8 9 10 11 12 13 14 15 16 17 18 19 20 21 22 23 24 25

Control X



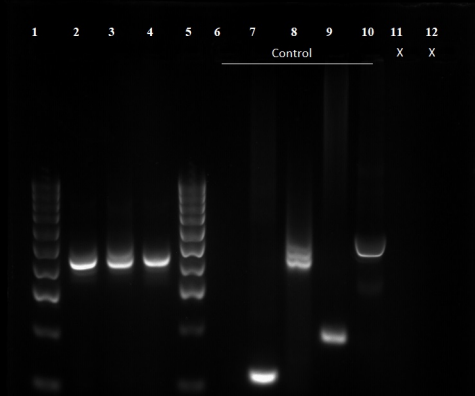
- 1. 100 Bp Ladder
- 2. 059-pk
- 3. 126-pf
- 4. 132-pf
- 5. 136-pf
- 6. 152-pf
- 7. 156-pf
- 8. 159-pf
- 9. 161-pf
- 10. 179-pf
- 11. 182-pk
- 12. 187-pk
- 13. 189-pk
- 14. 217-pk
- 15. 222-pk
- 16. 234-pf
- 17. 236-pf
- 18. 237-pf
- 19. 100 Bp Ladder
- 20. Negative Control
- 21. *P. vivax* (121 Bp)
- 22. *P. knowlesi* (450 Bp)
- 23. *P. falciparum* (206 Bp)
- 24. *Plasmodium* Sp. (600-700 Bp)
- 25. X

1 2 3 4 5 6 7 8 9 10 11 12 13 14 15 16 17 18 19 20 21 22 23 24 25

Control

X

- 1. 100 Bp Ladder
- 2. 238 -pf
- 3. 240 -pf
- 4. 241 -pk
- 5. 242 -pk
- 6. 243 -pk
- 7. 244 -pf
- 8. 245 -pf
- 9. 246 -pk
- 10. 247 -pf
- 11. 248 -pf
- 12. 249 -pk
- 13. 250 -pf
- 14. 251 -pf
- 15. 252 -pk
- 16. 253 -pf
- 17. 268 -pk
- 18. 270 -pk
- 19. 100 Bp Ladder
- 20. Negative Control
- 21. *P. vivax* (121 Bp)
- 22. *P. knowlesi* (430 Bp)
- 23. *P. falciparum* (206 Bp)
- 24. *Plasmodium* Sp. (600-700 Bp)
- 25. X



1. 100 Bp Ladder
2. 457-pk
3. 459-pk
4. 460-pk
5. 100 Bp Ladder
6. Negative Control
7. *P. vivax* (121 Bp)
8. *P. knowlesi* (450 Bp)
9. *P. falciparum* (206 Bp)
10. *Plasmodium* Sp. (600-700 Bp)
11. X
12. X