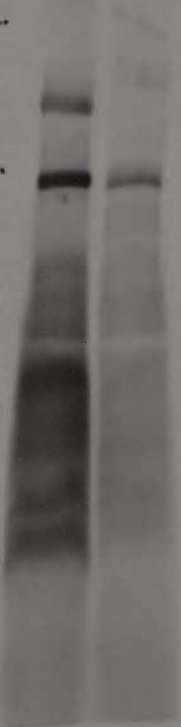


* نینینا



۱-۲-۳

۱
۱
۱
۱
۱
۱
۱



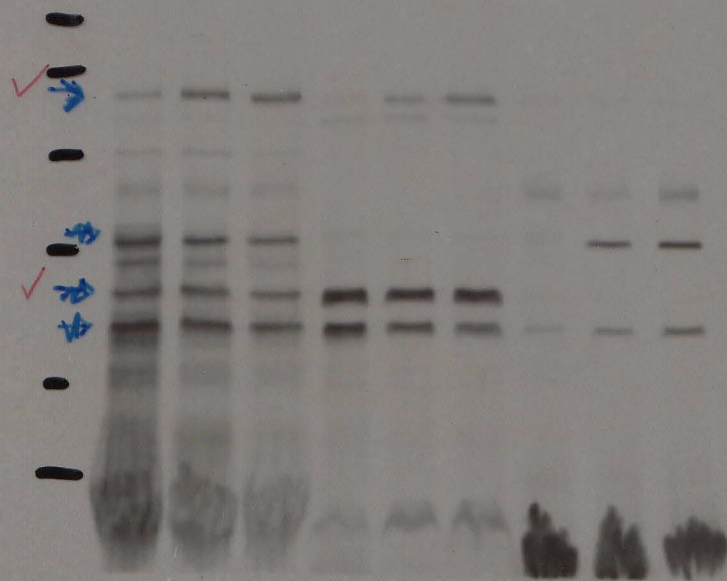
۱

۱



EX ✓
Ni ✓
EL
PC
EL

0 30 60 0 30 60 0 30 60





Ni
0' 30' 60'

PC
0' 30' 60'

T

<

<

<

L

↑

↑

↑

↑

L

06/04/2018

DIHMM4 MAR 19:02 0 052001570151000

0/N exposure



N/0



L

N 30



0/N.



L

12

Handwritten text on the right edge: *Handwritten text, possibly a date or reference number.*

3/05/2019

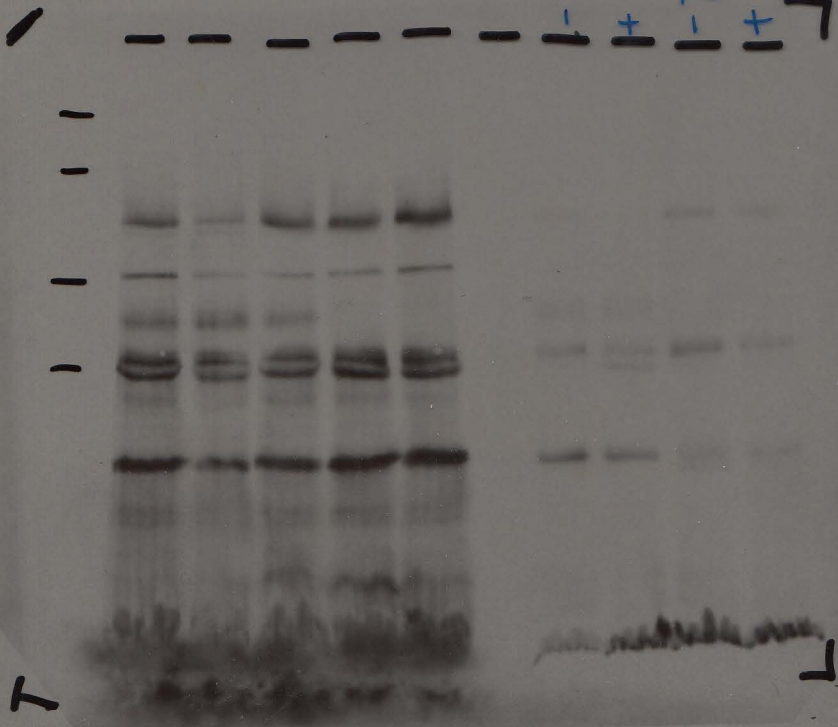
┌ + + └

┌ T T └



3 days.

(13)



10302
COX6-IIIc
- +
10302
AN5551
COX6-IIIc
- +

2 day exposure.





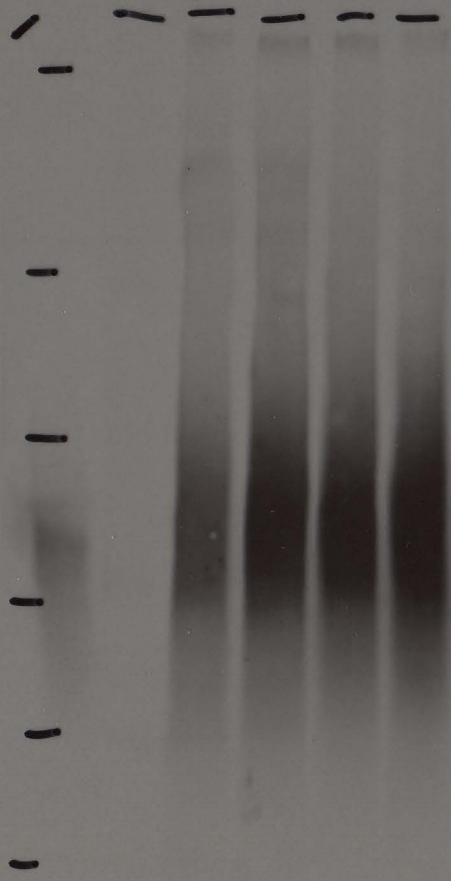
aw303

w303/cor6-fnc
-CAP

+CAP

w303 Δ msi5/
cor6-fnc
-CAP

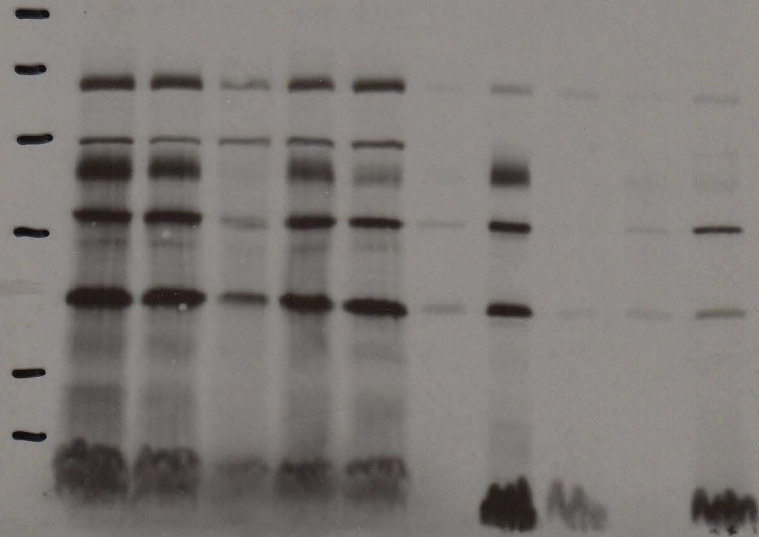
+CAP



N/A.

T

T



W303

W303 / COX6-MAZ

W303 Δ oxal / COX6-MAZ

W303 Δ oxal / STG

W303 Δ COX5 /

COX6-MAZ.

(7)



L

|

|

|

|

|

|

|

|

|

|

|

|

|

|

|

|

L

L

EOEWD

EOEWD

EOEWD

EOEWD

EOEWD

EOEWD

EOEWD

EOEWD

EOEWD

EOEWD

EOEWD



w303/COX6-HAL
+CAP

aw303Δoxa1/
COX6-HAL
+CAP

aw303ΔCOX5/
COX6-HAL
+CAP.

┐

┐┐

┐



→



ATP9
mono.

┐

┐
┐

┐┐

┐

N/O



17 w/ filter paper
08/07/18



W303

COX6-HAC

COX6-HAC
ATP9/ST21

1

1

1

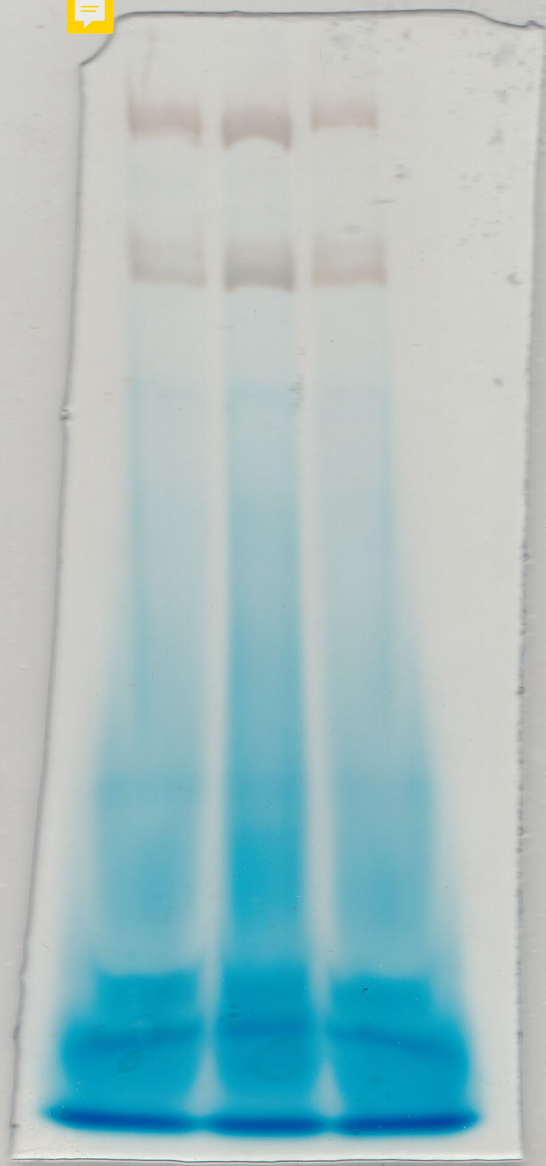
1

1

α - β subunit

4-13% BN-PAGE

①



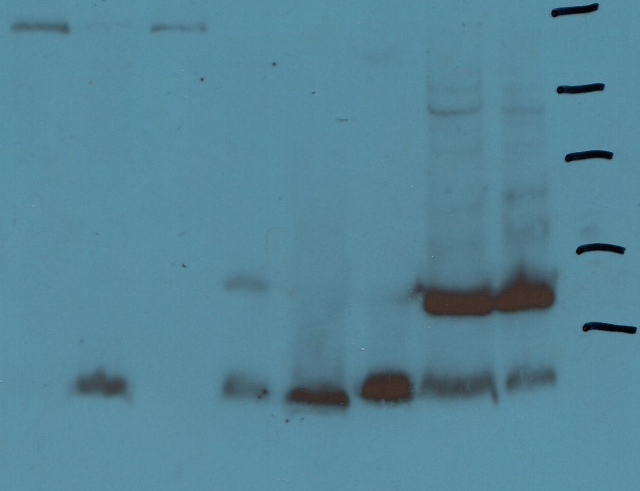
9 Oct 94

12x2D2

(7)



WT
 WT+TCA
 WT+CuP
 WT+CuP+TCA
 ATP152a1
 ATP9/152a1+TCA
 ATP9/152a1+CuP
 ATP9/152a1+CuP+TCA



6
5
4
3
2
1
0

kDa

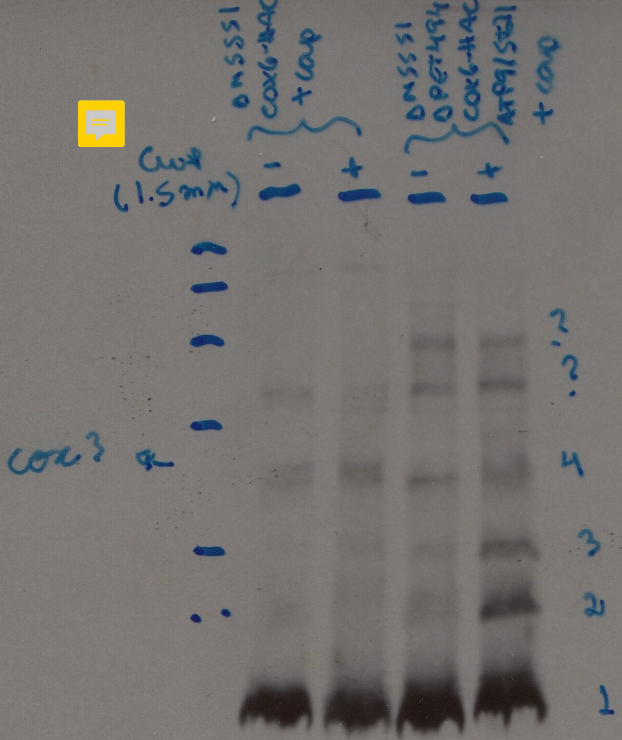
12

S-35 label in 8
pull-down P-
beads

07/18/19

2 days

6





Strain: M5551 / B26TH94 / ATP1/ST21

2 days

06/18/19
V54.SDS

labeling
zull down. P-C beads
crosslink 1h. 3m. M. Cu.P

5