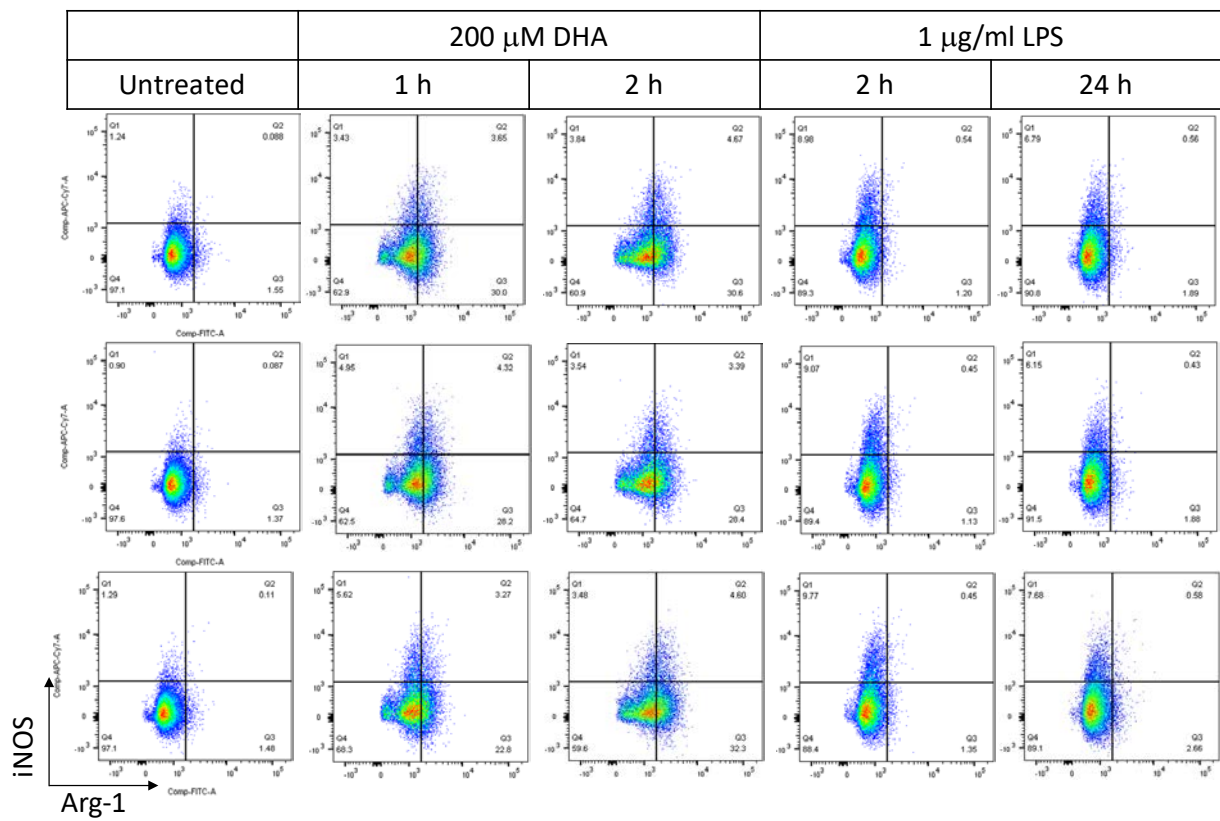
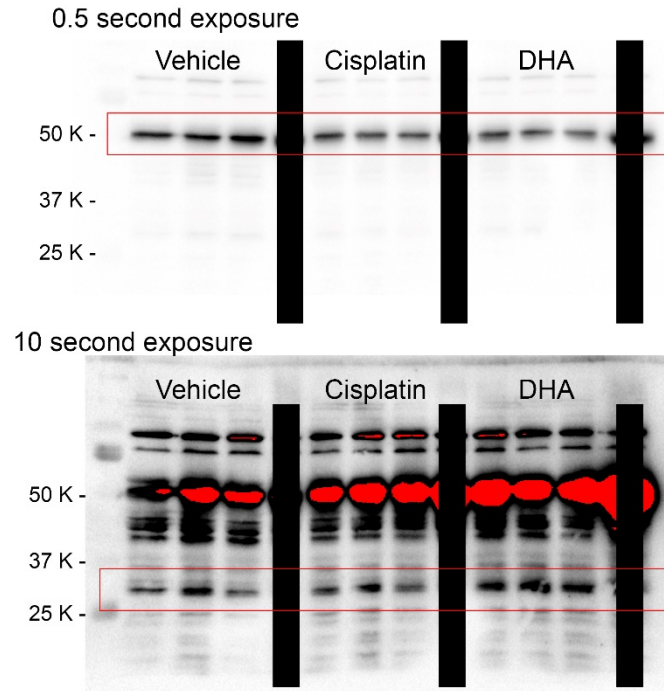


Supplementary Material



Supplemental Figure S1: Cells were treated with DHA or lipopolysaccharide (LPS) as indicated, then evaluated by flow cytometry for iNOS and ARG-1.



Supplemental Figure S2: Unmodified western blots. Cells were treated with vehicle, 200 μ M DHA, or 200 μ M cisplatin for 2 hours before collecting and evaluating for gasdermin D. Full length gasdermin D is apparent after 0.5 second exposure (upper panel, red box) while the cleaved fragment required a 10 second exposure for visualization (lower panel, red box).