

### Supplementary Material

Figure S1. – 2% agarose gel stained with ethidium bromide showing *H. pylori* PCR products (150bp) used to identify *H. pylori* in gastric biopsy samples from patients with gastritis. “Slots C+ and C-” Positive and Negative Controls, respectively. “Slot M” Ladder Marker 100 bp (Invitrogen). Water was used as negative control; as positive control, *H. pylori* DNA from culture was used. The band of approximately 1200bp is a non-specific band, not associated with *H. pylori*.

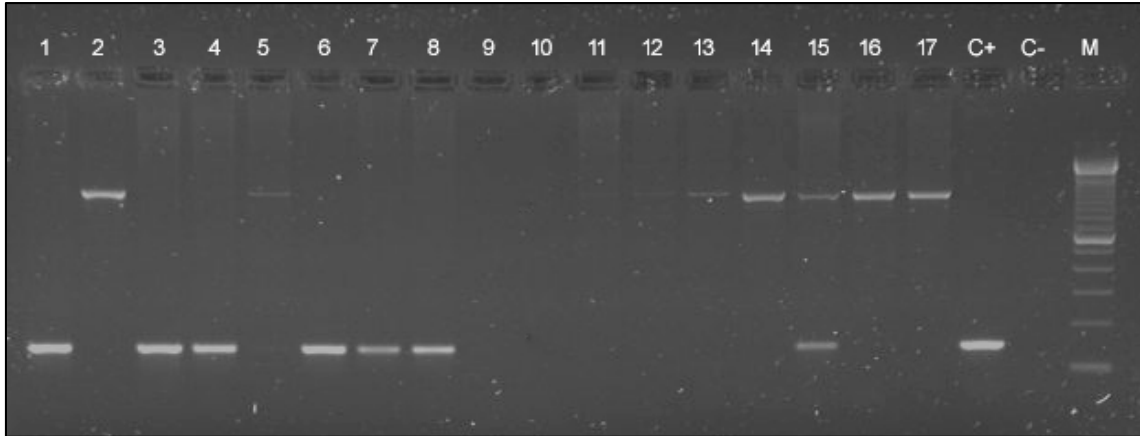


Figure S2. – 2% agarose gel stained with ethidium bromide showing *H. pylori* PCR products (150bp) used to identify *H. pylori* in gastric biopsy samples from patients with gastric cancer. “Slots C+ and C-” Positive and Negative Controls, respectively. “Slot M” Ladder Marker 100 bp (Invitrogen). Water was used as negative control; as positive control, *H. pylori* DNA from culture was used. The band of approximately 1200bp is a non-specific band, not associated with *H. pylori*.

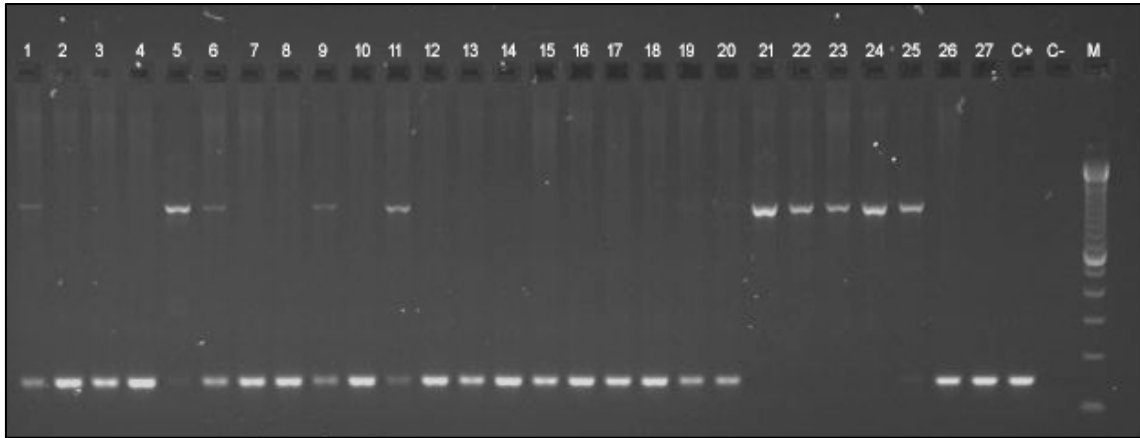


Figure S3. – 2% agarose gel stained with ethidium bromide showing *H. pylori* PCR products (150bp) used to identify *H. pylori* in gastric biopsy samples from patients with normal gastric tissue. “Slots C+ and C-” Positive and Negative Controls, respectively. “Slot M” Ladder Marker 100 bp (Invitrogen). Water was used as negative control; as positive control, *H. pylori* DNA from culture was used. The band of approximately 1200bp is a non-specific band, not associated with *H. pylori*.

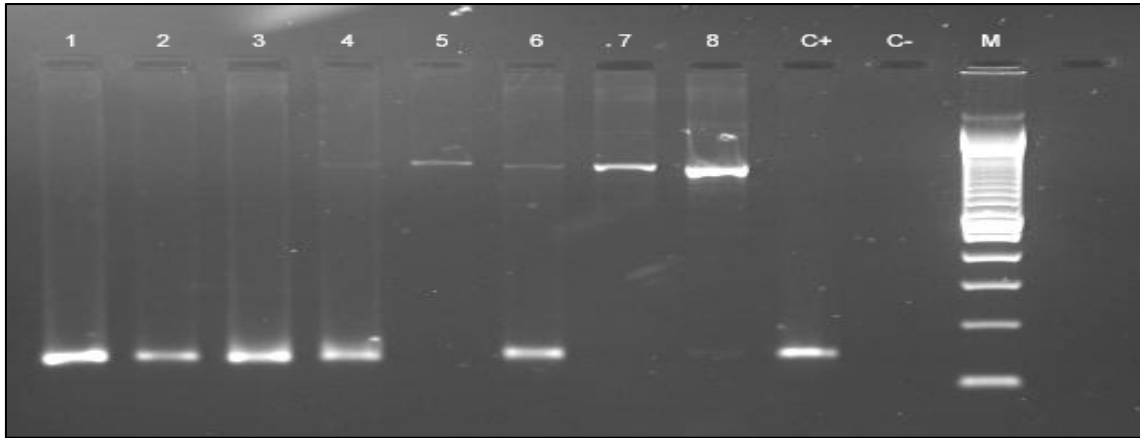


Figure S4. – 2% agarose gel stained with ethidium bromide showing *H. pylori* PCR products (150bp) used to identify *H. pylori* in gastric biopsy samples from patients with normal gastric tissue (Slots 1-8) and gastritis (Slots 9-17). “Slots C+ and C-” Positive and Negative Controls, respectively. “Slot M” Ladder Marker 100 bp (Invitrogen). Water was used as negative control; as positive control, *H. pylori* DNA from culture was used. The band of approximately 1200bp is a non-specific band, not associated with *H. pylori*.

