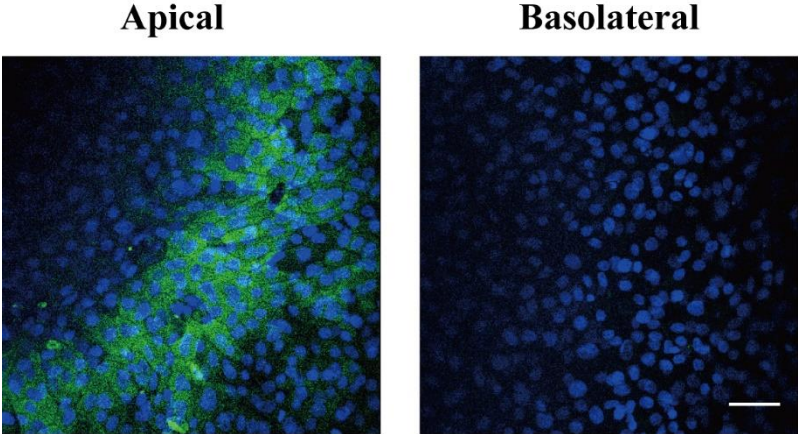
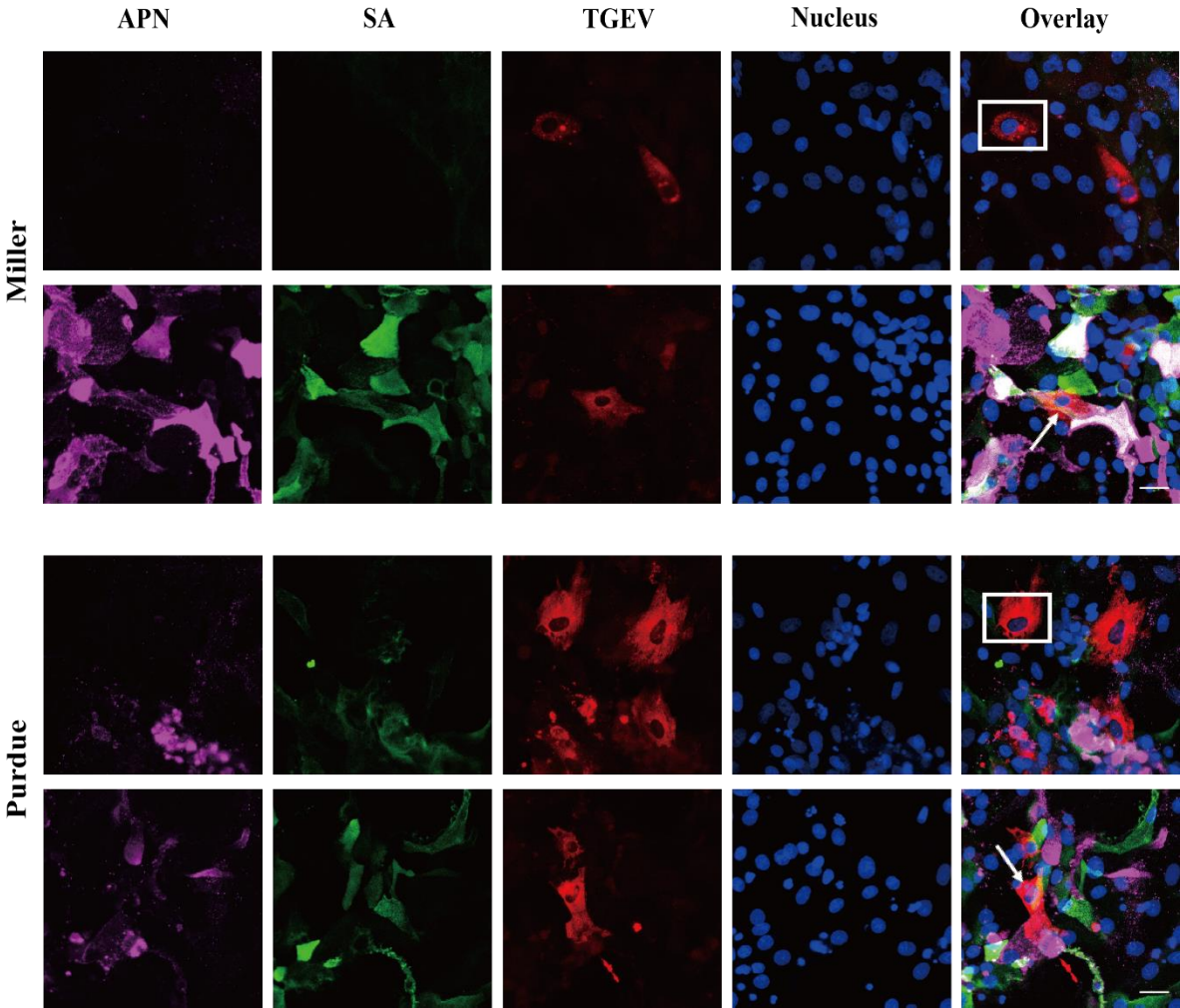


Supplementary figures



**Figure 1.** APN expression in the apical and the basolateral surfaces of enterocytes. Immunofluorescence staining of APN expression (green) in the apical and basolateral surfaces of enterocytes was performed 3 days post cultivation in the transwell system. Scale bar: 50µm.



**Figure 2.** Immunofluorescence staining of TGEV infection in both APN and SA positive/negative enterocytes. Primary enterocytes were inoculated with TGEV for 24 h. Triple immunofluorescence staining was performed to visualize the TGEV infection in APN and SA positive/negative cells. APN

and SA double negative enterocytes that were infected with TGEV were indicated with a white square. APN and SA double positive enterocytes that were infected with TGEV were indicated with a white arrow. Scale bar: 25 $\mu$ m.