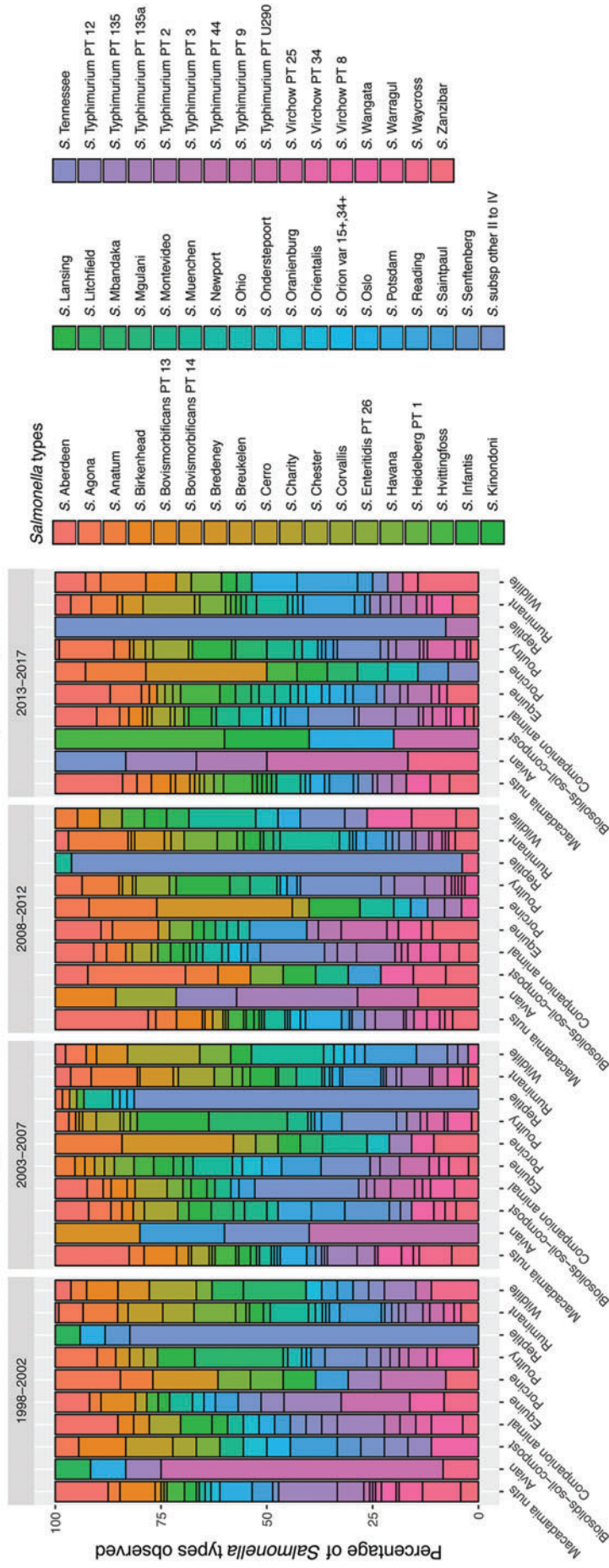


Distribution of *Salmonella* types in macadamia nuts and sources of interest per time period



Macadamia nuts, animal and environmental sources

SUPPLEMENTARY FIG. S3. The distribution pattern of *Salmonella* types in macadamia nuts and the nine sources of interest observed in the different 5-year time periods. A percentage of the 52 different *Salmonella* types are stacked along the y-axis for each source for each 5-year time period. Every *Salmonella* type is found on macadamia nuts in each 5-year time period, but not necessarily in each of the nine sources.