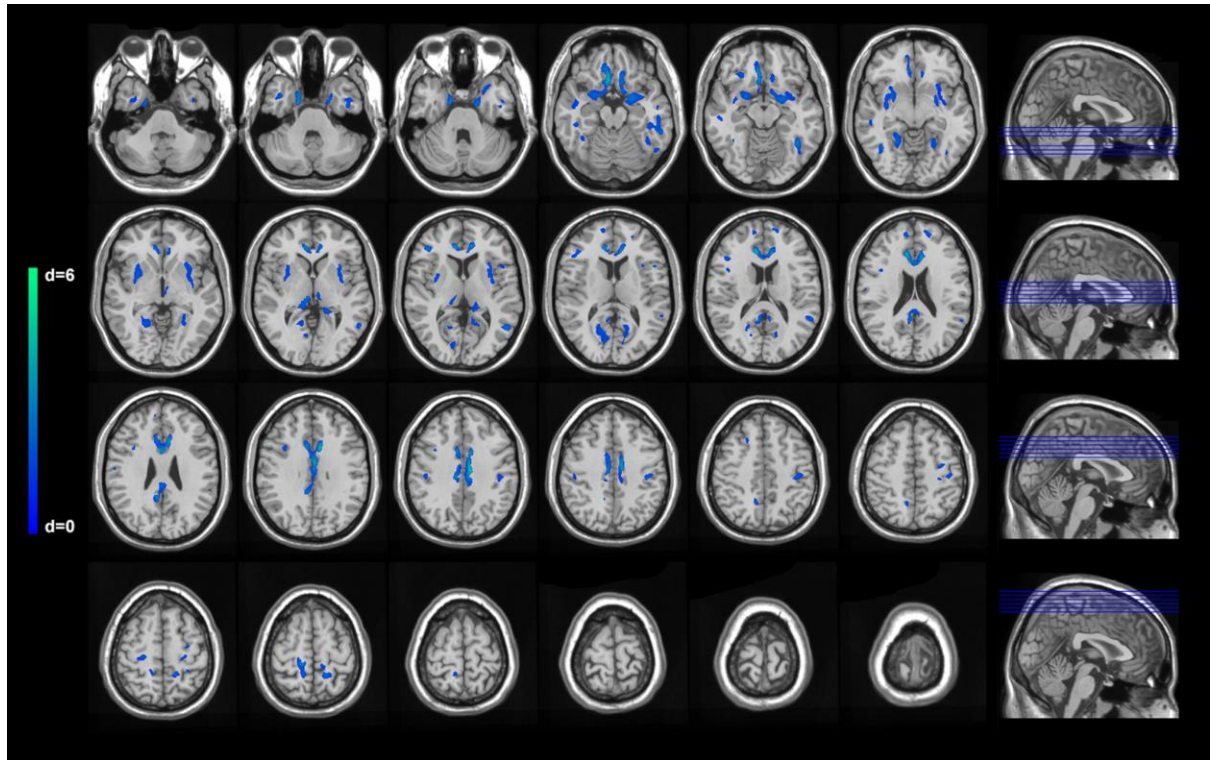


Supplemental Figure 1.

SPM (t value) axial intensity projection maps showing areas of significant decreases of gray matter concentration (color code, yellow to orange) in a cohort of patients with multiple sclerosis compared to healthy control subjects rendered on to a stereotactically normalized MRI scan in MNI space.



Supplemental Figure 2.

SPM (Cohen's d value) axial intensity projection maps showing the effect sizes of areas representing significant decreases of gray matter concentration (color code, turquoise to blue) in a cohort of patients with multiple sclerosis compared to healthy control subjects rendered on to a stereotactically normalized MRI scan in MNI space.