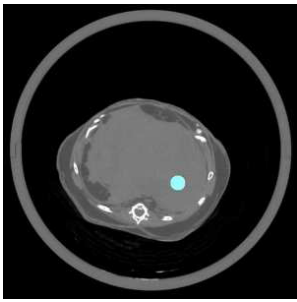
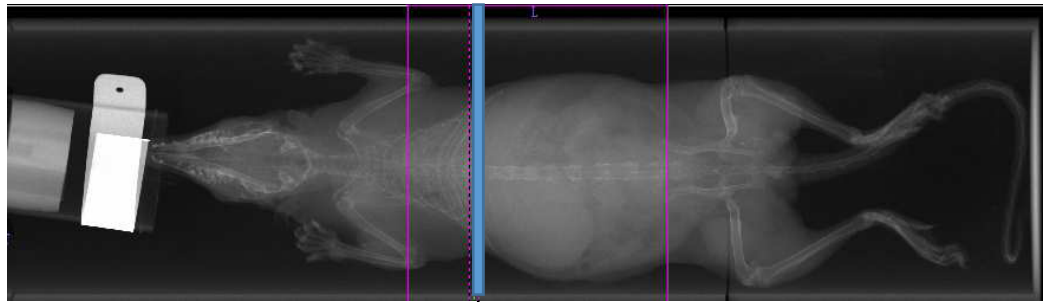


■ Measurement of fatty liver in tree shrew

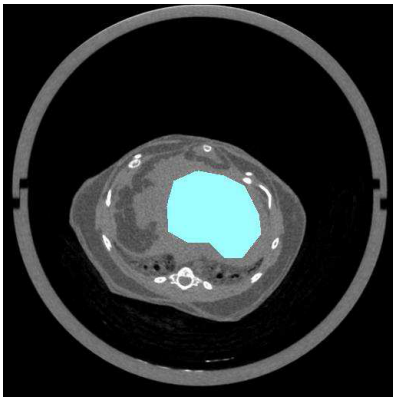


Fat content; 4.6 %

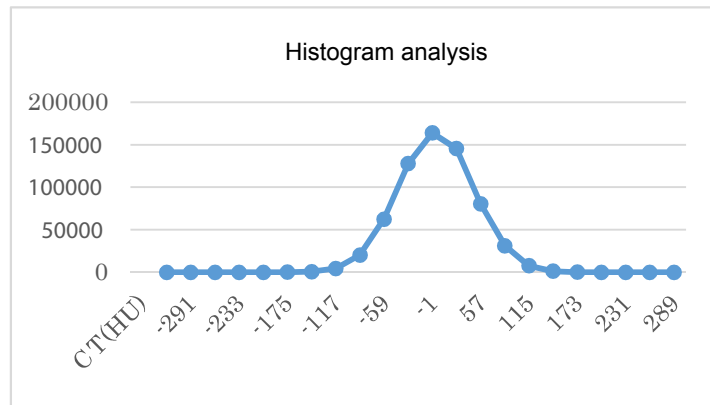


analysis area

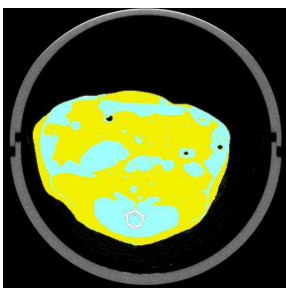
■ Measurement of liver volume in tree shrew



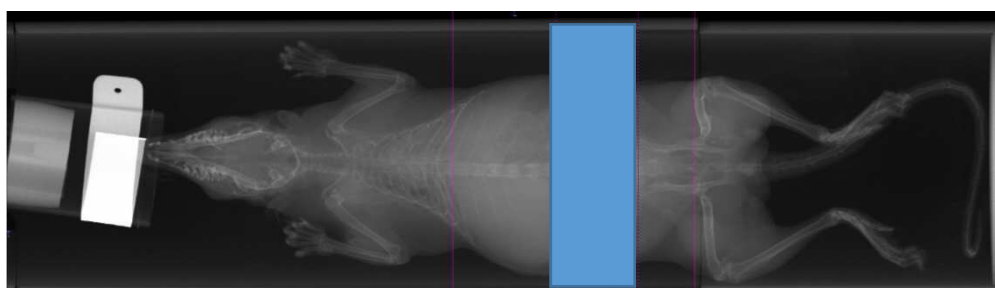
Average CT value; 18.2 (HU)



■ Measurement of fat ratio in tree shrew



Fat ratio; 55.637 %



analysis area

■ Measurement of brain volume and analysis of foreign materials (blue or red) in tree shrew

