

Impact of Cardiac Implantable Electronic Device Infection: A Clinical and Economic Analysis of the WRAP-IT Trial

Running title: *Wilkoff et al.; Impact of CIED Infection*

Bruce L. Wilkoff, MD¹; Giuseppe Boriani, MD, PhD², Suneet Mittal, MD³; Jeanne E. Poole, MD⁴; Charles Kennergren, MD, PhD⁵; Ralph Corey, MD⁶; John Love, MD⁷; Ralph Augostini, MD⁸; Svein Faerestrland, MD, PhD⁹; Sherman S. Wiggins, MD¹⁰; Jeff S. Healey, MD¹¹; Reece Holbrook, BSEE¹²; Jeffrey D. Lande, PhD¹²; Daniel R. Lexcen, PhD¹²; Sarah Willey, MPH¹²;

Khaldoun G. Tarakji, MD, MPH¹ for the WRAP-IT Investigators



¹Cleveland Clinic, Cleveland, OH; ²University of Modena and Reggio Emilia, Modena, Italy; ³Valley Health System, Ridgewood, NJ; ⁴University of Washington, Seattle, WA; ⁵Sahlgrenska University Hospital, Göteborg, Sweden; ⁶Duke Clinical Research Institute, Durham, NC; ⁷Maine Medical Center, Portland, ME; ⁸Ohio State University, Columbus, OH; ⁹University of Bergen and Haukeland University Hospital, Bergen, Norway; ¹⁰ARK-LA-TEX Cardiology, Christus Highland Hospital, Shreveport, LA; ¹¹Population Health Research Institute, McMaster University, Ontario, Canada; ¹²Medtronic, Mounds View, MN

Correspondence:

Bruce L. Wilkoff, MD

Cleveland Clinic

9500 Euclid Ave J2-2

Cleveland, OH 44195

Tel: 216-444-1904

E-mail: wilkoffb@ccf.org

Journal Subject Terms: Complications; Mortality/Survival; Quality and Outcomes; Electrophysiology; Clinical Studies

Abstract:

Background - Current understanding of the impact of cardiac implantable electronic device (CIED) infection is based on retrospective analyses from medical records or administrative claims data. The WRAP-IT trial offers an opportunity to evaluate the clinical and economic impacts of CIED infection from the hospital, payer, and patient perspectives in the US healthcare system.

Methods - This was a pre-specified, as-treated analysis evaluating outcomes related to major CIED infections: mortality, QOL, disruption of CIED therapy, HCU, and costs. Payer costs were assigned using Medicare FFS national payments, while Medicare Advantage, hospital, and patient costs were derived from similar hospital admissions in administrative datasets.

Results - Major CIED infection was associated with increased all-cause mortality (12-month risk-adjusted HR 3.41; 95% CI, 1.81 to 6.41; $P < 0.001$), an effect that sustained beyond 12 months (HR through all follow-up 2.30; 95% CI, 1.29 to 4.07; $P = 0.004$). QOL was reduced ($P = 0.004$) and did not normalize for 6 months. Disruptions in CIED therapy were experienced in 36% of infections for a median duration of 184 days. Mean costs were $\$55,547 \pm \$45,802$ for the hospital, $\$26,867 \pm \$14,893$, for Medicare FFS and $\$57,978 \pm \$29,431$ for Medicare Advantage (mean hospital margin of $-\$30,828 \pm \$39,757$ for Medicare FFS and $-\$6,055 \pm \$45,033$ for Medicare Advantage). Mean out-of-pocket costs for patients were $\$2,156 \pm \$1,999$ for Medicare FFS, and $\$1,658 \pm \$1,250$ for Medicare Advantage.

Conclusions - This large, prospective analysis corroborates and extends understanding of the impact of CIED infections as seen in real-world datasets. CIED infections severely impact mortality, QOL, HCU, and cost in the US healthcare system.

Clinical Trial Registration – clinicaltrials.org; Unique Identifier: NCT02277990

Key words: cost; pacemaker; implantable cardioverter-defibrillator; resynchronization; Medicare; CIED; Infection; economics; health outcomes

Nonstandard Abbreviations and Acronyms

CIED	Cardiac Implantable Electronic Device
CMS	Centers for Medicare & Medicaid Services
COPD	Chronic Obstructive Pulmonary Disease
CPT	Current Procedural Terminology
CRT-D	Cardiac Resynchronization Therapy Defibrillator
EQ-5D	EuroQOL-5D Questionnaire
FFS	Fee For Service
GFR	Glomerular Filtration Rate
HCU	Healthcare Utilization
HR	Hazard Ratio
ICD-10-CM	International Classification of Diseases, 10th Revision, Clinical Modification
ICD-10-PCS	International Classification of Diseases, 10th Revision, Procedure Coding System
IPG	Implantable Pulse Generator
KM	Kaplan-Meier
MS-DRG	Medicare Severity-Diagnosis Related Group
PADIT	Prevention of Arrhythmia Device Infection Trial
QOL	Quality of Life
US	United States
WRAP-IT	<u>W</u> orldwide <u>R</u> andomized <u>A</u> ntibiotic <u>E</u> nvelope <u>I</u> nfection <u>P</u> revention <u>T</u> rial



Introduction

Cardiac implantable electronic devices (CIEDs) are lifesaving and life-improving technologies for an estimated 1.5 million patients who suffer from electrical disturbances and heart failure disorders every year.¹ While these technologies have evolved over the decades, patients still experience serious complications, such as infection. Approximately 1-4% of CIED procedures are associated with an infection.²⁻⁴

Importantly, the impact of CIED infection is substantial for an individual patient, since infection management typically requires hospitalization, prolonged antibiotic therapy, and often times complete device and lead removal.⁵ CIED infections carry high short- and long-term mortality risk with an estimated 1 in 5 patient deaths occurring within 1 year, and a 50% risk of mortality at 3 years.^{6,7} These consequences have a significant financial impact on the healthcare system with prior retrospective estimates of the average cost of treating CIED infections ranging from \$45K to \$49K from the payer perspective,^{8,9} and approximately \$55K in hospital costs.¹⁰

Previous efforts to characterize the impact of infection are derived from either single-center experiences or retrospective large claims-based analyses, and do not fully explore the perspectives of mortality in infected vs. non-infected patients, quality of life (QOL), disruptions in CIED therapy, payer and hospital economics, and patient out-of-pocket costs. The WRAP-IT trial randomized the use of the absorbable antibacterial envelope (TYRX™, Medtronic, Minneapolis, MN) envelope among 6,983 patients at increased risk of infection, and envelope use resulted in a 40% reduction in major CIED infections.¹¹ The data from the WRAP-IT trial offer a unique opportunity to evaluate the clinical and economic impact of CIED infection.

Methods

This was a pre-specified, as-treated analysis of the WRAP-IT trial patients, to evaluate clinical and economic consequences related to major CIED infections. Clinical outcomes were defined as mortality, QOL, and disruption in CIED therapy. Economic outcomes were healthcare utilization (HCU) and costs from the United States (US) payer, provider, and patient perspectives. Due to the proprietary nature of the data collected for this trial, data will not be made publicly available.

Trial Design

WRAP-IT was a multicenter, randomized, controlled, prospective, single-blinded, interventional clinical trial comparing standard-of-care antibiotic prophylaxis with the adjunctive use of the TYRX envelope. It included patients undergoing CIED generator replacement or a system upgrade with or without new leads, those undergoing CIED pocket or lead revision, and those undergoing an initial cardiac resynchronization therapy defibrillator (CRT-D) procedure. Further details of the trial design have been described previously.¹² The protocol was approved by the ethics committee at each participating institution and associated national and local regulatory agencies. All patients provided written informed consent.

The primary trial endpoint for WRAP-IT was major CIED infection within 12 months of the index procedure, where major infection was defined as infection resulting in CIED system removal, an invasive CIED procedure (e.g., pocket revision without removal), treatment with long-term suppressive antibiotic therapy (if the patient was not a candidate for system removal) with infection recurrence after discontinuation of antibiotic therapy or resulting in death. Major CIED infection is a subset of all CIED infections, defined as either superficial cellulitis in the region of the CIED pocket with wound dehiscence, erosion, or purulent drainage; deep incisional

or space (pocket) surgical-site infection that met the Centers for Disease Control and Prevention criteria, independent of time from surgery; persistent bacteremia; or endocarditis.

Cohort Selection

For this analysis we evaluated the consequences of infections independently from the use of the envelope and considered all major infections for analysis. Poolability of data between the envelope and no envelope arms was confirmed by comparing hospitalization length of stay, total number of hospitalizations per infection and healthcare utilization intensity (Table S1 & S2, Figure S1 in Supplement). Healthcare utilization intensity was defined similar to a previous analysis by categorizing the consequence of the infection as no hospitalization, no system removal and at least one inpatient hospitalization, CIED system removed without replacement or CIED system removed with replacement.⁸

Poolability tests revealed significant differences in HCU between infections treated at US and non-US sites (Table 1), thus infections were stratified into two cohorts: Cohort with Major Infections inclusive of all infections at all sites, and US Cohort with Major Infections inclusive of only infections that occurred at US sites. Economic outcomes were analyzed only in the US Cohort with Major Infections. All HCU and costs associated with trial endpoints were analyzed, even if they occurred more than 12 months after the index procedure.

Mortality and Quality of Life

Clinical outcomes were analyzed in the full global dataset for primary trial endpoints. The mortality analysis compared the risk of death at 12 months and throughout all follow-up in patients experiencing a primary trial endpoint (major infection within 12 months of index procedure) to those with no primary trial endpoint, and observationally for all follow-up post infection diagnosis. QOL was collected using EuroQOL-5D (EQ-5D) at baseline, infection

diagnosis, 1, 3, 6-months after diagnosis, and at 12 months after the index procedure. EQ-5D health states were converted to utilities (single cardinal values between 0 and 1 reflecting the health-related QOL of an individual at a point in time)¹³ using weights reflecting US societal preferences.¹⁴

Cost Assignment

Costs reflect inpatient and outpatient hospital visits, clinic visits, long-term stays, home healthcare, and associated professional services. All currency reflects 2017 US dollars.

Payer Perspective

For the payer perspective, costs were assigned as if all HCUs occurred for members of Medicare fee for service (FFS), and also as if all were members of a Medicare Advantage plan. HCU reimbursement codes were retrospectively assigned by a certified medical coding professional and validated by a second. Both coding professionals were blinded to the therapy randomization but had full access to the trial adverse event and HCU data. CPT,¹⁵ ICD-10-PCS,¹⁶ and ICD-10-CM¹⁷ codes were imputed based on HCU type, diagnosis, and healthcare description. For Medicare FFS payments, codes were mapped to a Medicare Severity-Diagnosis Related Group (MS-DRG) and used to determine local reimbursement rates,¹⁸ accounting for outlier payments based on Centers for Medicare & Medicaid Services (CMS) reimbursement rules and regulations.¹⁹ For Medicare Advantage payments, codes were used to determine average standardized costs for claims in the de-identified Optum Clinformatics Data Mart®, an administrative health plan database associated with a large US healthcare organization.

Hospital Perspective

Hospital cost assignments were determined by matching each hospital visit with average costs from comparable events in the Premier Healthcare Database, with data on hospital costs and

coding histories for more than 970 health care facilities in the US.²⁰ For inpatient admissions, inpatient hospitalizations with an infection diagnosis code (Table S3 in Supplement) in any position were selected, and the match was based on year, MS-DRG and procedure type, and costs were scaled by length of stay. For hospital outpatient and observation stays, same day surgery procedures or observation hospitalizations were selected, and the match was based on year, CPT and diagnosis codes, and type of encounter. Emergency department visits were matched by year, diagnosis code, and physician specialty. A sensitivity analysis was performed to determine the impact of excluding infections that were not resolved prior to trial exit.

Hospital margin was calculated for each infection by subtracting total hospital revenue assuming physicians were not employees of the hospital (i.e., inpatient and outpatient hospital facility reimbursement only) from total hospital costs. A sensitivity analysis was performed to determine the impact of physician employment status by including professional services in the margin calculation.

Statistical Analysis

Kaplan–Meier (KM) methods were used to construct event-rate plots. Time-to-event for the major CIED infection endpoint was set to the interval from the time of the index procedure to the time of the first major CIED infection within 365 days. Patients with no major CIED infections in the first 365 days were censored at 365 days or the last follow-up visit, if it occurred prior to 365 days. Time-to-event for the all-cause mortality endpoint was calculated in a similar fashion. Hazard ratios (HR) and P-values for time-to-event analyses were derived with the use of a Cox proportional-hazards regression model and all-cause mortality was adjusted for CIED device type (pacemaker, defibrillator, CRT), age, gender, history of cardiomyopathy, coronary artery disease, myocardial infarction, chronic obstructive pulmonary disease (COPD), diabetes and

renal disease (renal failure requiring dialysis, or renal insufficiency not requiring dialysis [Glomerular Filtration Rate (GFR) < 60 ml/min/1.73 m²]). Change in QOL from baseline to the time of major infection, 1, 3, and 6 months post-infection was assessed through repeated measures modeling, assuming compound symmetry within patient. Poolability between the envelope group and the no envelope group was assessed by Student's t-test for continuous variables and Chi-squared test for the categories of HCU intensity. Descriptive and summary statistics are reported. All analyses were performed with the use of the R statistical package (R Project for Statistical Computing) or SAS software, version 9.4 (SAS Institute).

Results



There were 6903 patients from 181 centers in 25 countries within North America, Europe, Asia, and South America included in the analysis. A total of 70 major infections occurred in 67 patients (3 patients had 2 major infections each) through 12 months follow-up (Cohort with Major Infections). Infections occurred at 49 centers in 14 different countries, with no more than 3 infections at any 1 center. There were 43 major infections among 41 patients seen in the US healthcare system (US Cohort with Major Infections) (Table 2).

Mortality

In the WRAP-IT trial, 355 patients died within 12 months of the index procedure: 10 of the 67 patients in the infection group (12-month KM estimate: 16%) and 345 of the 6836 patients in the no infection group (12-month KM estimate: 5%). As compared with the no infection group, infections were associated with an increased risk of death (risk-adjusted HR, 3.41; 95% confidence interval [CI], 1.81 to 6.41; P<0.001). The effect on mortality was sustained beyond 12 months (HR through all follow-up: 2.30; 95% CI: 1.29 to 4.07; P=0.004) (Figure 1A). Of the

patients in the Cohort with Major Infections, the KM estimates of mortality after major infection onset were 16% at 12 months and 23% at 24 months (Figure 1B).

Quality of Life

EQ-5D based utilities at baseline and 12-month follow-up (presumed well states) were similar for patients in the Cohort with Major Infections across devices types. Utilities were significantly reduced at time of infection diagnosis vs. baseline (adjusted mean difference 0.09, P=0.004) and did not normalize until 6 months post-diagnosis (Figure 2, Table S4 & S5 in Supplement).

CIED Therapy Disruption

Of the 70 major infections that occurred within 12 months of the index procedure, 11 did not lead to removal of the CIED and 59 did lead to removal of the CIED. Of those with CIED removal, 5 deaths occurred prior to infection resolution and CIED re-implantation (median of 14 [range 6-55] days from system removal to death), 14 did not have the CIED re-implanted during the course of the trial (median of 164 [range 0-749] days from system removal to trial exit), 11 had the CIED explanted in one hospitalization and re-implanted in another (median of 74 [range 27-288] days from system removal to re-implant), and 29 had the CIED re-implanted during the same hospitalization (median of 6.5 [range 0-22] days from system removal to re-implant).

Disruptions in CIED therapy were experienced in 36% of infections for a median duration of 8474 days (range 0-749 days, mean duration 184 days) (Figure 3).

HCU and Costs in the US Healthcare System

The US Cohort with Major Infections experienced a mean of 3.6 ± 5.6 clinic visits and 1.7 ± 0.9 hospital admissions (total hospital days 13.5 ± 11.2 days) per infection. Mean payer costs per infection were $\$26,867 \pm \$14,893$ for Medicare FFS and $\$57,978 \pm \$29,431$ for Medicare Advantage (Figure 4A).

Mean hospital costs were $\$55,547 \pm \$45,802$ per infection (Figure 4B). Costs varied by treatment intensity ($\$16,592 \pm 11,293$ for 5 infections treated without extraction, $\$45,694 \pm 34,936$ for 12 infections treated with extraction and no replacement, $\$67,586 \pm 49,660$ for 26 infections treated with extraction and replacement). Mean hospital margins (hospital reimbursement minus cost) per infection were negative: $-\$30,828 \pm \$39,757$ assuming Medicare FFS reimbursement and $-\$6,055 \pm \$45,033$ for Medicare Advantage (Figure 4B).

Mean patient costs per infection were $\$2,156 \pm \$1,999$ assuming Medicare FFS membership and $\$1,658 \pm 1,250$ assuming Medicare Advantage (Figure S2 in Data Supplement).

Sensitivity Analyses

Among the infections in the US Cohort with Major Infections, there were 5 infections that did not involve a full course of treatment (3 died and 2 exited the trial prior to resolution). When these infections were excluded, mean payer costs were $\$28,229 \pm \$15,066$ for Medicare FFS and $\$58,797 \pm \$30,587$ for Medicare Advantage; mean hospital costs were $\$56,159 \pm \$46,698$.

Among the infections in the US Cohort with Major Infections, when including reimbursement payments for professional services, mean hospital margins were negative at $-\$29,393 \pm \$39,399$ assuming Medicare FFS reimbursement and slightly positive at $\$31 \pm \$45,999$ for Medicare Advantage.

Discussion

In this prospective evaluation of the WRAP-IT trial data, CIED infection was associated with a greater than three-fold risk of mortality at 12 months after the index procedure, with mortality after major infection onset of 16% at 12 months and 23% at 24 months. QOL was significantly reduced at time of infection diagnosis as compared to baseline and did not return to normal levels

prior to six months after diagnosis. Disruptions in CIED therapy were experienced in 36% of the infections with a mean duration of approximately six months. Average costs in the US healthcare system for an infection were $\$26,867 \pm \$14,893$ and $\$57,978 \pm \$29,431$ for Medicare FFS and Medicare Advantage payers, respectively; $\$55,547 \pm \$45,802$ for the hospital, $\$2,156 \pm \$1,999$ for the Medicare FFS member, and $\$1,658 \pm \$1,250$ for the Medicare Advantage member.

Historically, there is an expectation that CIED infection rates range from 1-4%.²⁻⁴ The recent WRAP-IT and PADIT trials reported overall control infection rates of 1.2% and 1.03% respectively, which fall within the expected range.^{11,21} For perspective, it is important to note that both trials had different inclusion/exclusion criteria, with WRAP-IT excluding *de novo* implants of IPG and ICD devices, as well as, patients on hemodialysis and immunosuppressive therapy, and PADIT excluding patients with prior infection and limiting some centers to high risk patients only.^{11,21} The rates observed in these trials may also deviate from real-world expectations, both in selection of implant sites with a high implant volume and best practice infection prevention techniques, and the potential of a “Hawthorne effect” due to a clinical trial focusing on infections as an endpoint.

Prior reports estimate that patients with CIED infection were associated with approximately twice the mortality risk after 1 year compared to patients without infection.^{22,23} We observed in this prospective evaluation that the risk of mortality associated with CIED infection was substantially higher, suggesting a greater than 3-fold risk of death through 1-year follow-up and that this effect was sustained beyond 1 year. The prospective, longitudinal nature of the data collection in this analysis is likely a more accurate representation of true mortality rates, as compared to prior retrospective claims-based analyses. It may also be reflective of the change in mortality incidence over time, since inpatient mortality was previously estimated to

increase by 1% per decade over a 16-year period.³ However, all-cause mortality in patients with major infection accounted for only about 0.3% of total deaths in the WRAP-IT trial. As such, it should be noted that while infections are expensive and increase mortality, they represent a small component of overall mortality risk to this cohort.

To date, estimates of the impact of CIED infections on QOL are based on expert opinions rather than quantifiable data.²⁴ This analysis establishes an understanding of the impact of infection on QOL, quantifying the severity and duration of this impact. At infection diagnosis, QOL is reduced by an adjusted mean difference of 0.09, which is more than twice the US-specific instrument-defined minimally important difference of 0.04.²⁵ The data from WRAP-IT implies that there is a full recovery to normal baseline QOL, and this occurs up to 6 months post-infection diagnosis for surviving patients.

The potential of an infection to disrupt CIED therapy has not been characterized previously. The experience in WRAP-IT indicates that approximately 40% of infections involved disruption in CIED therapy. This is a novel understanding of a potentially important consequence; a period (median, 166 days) where the patient not treated in a single hospitalization is living without a previously indicated device therapy. In the absence of an infection, patients would have continued receiving their indicated CIED therapy without interruption. It is important to acknowledge that there might be clinical circumstances where there was no intent to replace the device after removal, or where the patient was at low risk for adverse events without a device.

Greenspon *et al.*⁸ performed a claims-based analysis of Medicare FFS payer costs for patients with and without CIED infection with a weighted average of \$27K directly related to infection treatment, which is concordant with the WRAP-IT observation of \$27K for Medicare

FFS. Although WRAP-IT only collected HCUs directly related to infections, the prior estimate of Medicare FFS payments by Greenspon *et al.* also found that total incremental expenses (not just infection related) totaled \$47K, suggesting that the cost impact of CIED infection extends beyond direct infection-related expenses. Sohail *et al.*⁹ estimated total incremental expenses for commercial plus Medicare Supplemental patients with infection at \$46-48K while our estimate was \$58K for Medicare Advantage payers. While it is commonly expected that Medicare Advantage reimbursement is higher than Medicare FFS, the higher observed rate is at least partially impacted by higher payments to out-of-network providers.

Our study estimated the actual cost to the hospital for infection treatment at approximately \$56K. This appears to be similar to previous estimates.¹⁰ Using our estimates of Medicare FFS, Medicare Advantage, and hospital costs, we estimate that treating an infection results in an average margin of -\$31K to -\$6K, which signals a higher burden on hospitals than previously understood.

Few prior publications have attempted to quantify the out-of-pocket cost impacts that CIED infections have to the patient. Mean out-of-pocket cost for infection treatment in this study was estimated to be \$2,156 for the Medicare FFS member (Medicare Advantage members see a slightly lower but still substantial cost, \$1,658). The Medicare Part A inpatient hospital deductible for 2017 was \$1,309, and all but two of the infections in this study led to a total cost to the patient of at least this amount or higher. This level represents paying at or above worst-case expectations, which may be a significant economic and emotional burden for the average person. Achieving high value for patients is a central goal of value-based healthcare and tracking both outcomes and costs longitudinally from the patient perspective is the only way to accurately measure that value.²⁶

The burden of an infection impacts multiple stakeholders, which has not previously been evaluated comprehensively in retrospective data sets. This prospective analysis, which considers payer, hospital, and patient costs provides a comprehensive understanding of the consequences of CIED infection and warrants further evaluation of the clinical and economic benefit of technologies designed to prevent CIED infection.

Limitations

Data from the WRAP-IT trial had specific inclusion/exclusion criteria that may not represent real-world practice; however, a real-world perspective can be gained from prior observational analyses in the literature. There is a possibility of under-reporting of HCU, which was mitigated by diligent data collection by the clinical trial team. We also did not collect non-infection related HCU, yet this represents a very accurate view of direct infection-related costs and indirect costs can be estimated from other sources. Although our analysis did not consider other payer perspectives (e.g., Medicaid, Veterans, employer, private plans), the majority of CIED recipients are Medicare eligible. Payments from Medicare Advantage plans vary considerably; however, these estimates were drawn from the largest commercial payer in the US. Hospital costs estimated from charges multiplied by cost-to-charge ratios may not accurately represent true hospital costs, but this is a generally accepted method. These results are specific to the US healthcare system and cannot be extrapolated to other geographies. Finally, the clinical judgement leading to the decision to explant or re-implant devices were not always available. The results, however, provide insight into the impact of disruptions in CIED therapy.

Conclusion

This large, prospective analysis corroborates and extends understanding of the impact of CIED infections as seen in real-world datasets. Even in the selected context of a randomized trial

involving centers with high volumes of CIED implants, CIED infections result in severe impact on mortality, QOL, disruption of CIED therapy, hospitalization, and cost in the US healthcare system. This comprehensive evaluation of the consequences of infections provides a foundation for understanding the clinical and economic impact of strategies designed to address the problem of CIED infection.

Acknowledgments: We are grateful to Kelli Schuett, RHIA, Denise Griesmann, CPC, CCC and Lucas Higuera, MA from Medtronic for creating the payer, hospital and patient perspective cost assignments, and to Swathi Seshadri, PhD for assistance in the preparation of this manuscript.

Sources of Funding: This work was supported by Medtronic, Minneapolis MN



Disclosures: Bruce L. Wilkoff received honoraria/consultant fees from Abbott, Medtronic, and Philips. Giuseppe Boriani received honoraria/consultant fees from Biotronik, Boston Scientific, and Medtronic. Suneet Mittal received honoraria/consultant fees from Abbott, Boston Scientific, and Medtronic. Jeanne E. Poole received honoraria/consultant fees from Boston Scientific, EBR Solutions, Kestra, and Medtronic. Charles Kennergren received honoraria/consultant fees from Medtronic. Ralph Corey received honoraria/consultant fees from Arsanis, Basilea, Bayer, Contrafact, Medtronic, Melinta, Motif, Paratek, Pfizer, Quintiles, Tetrphase, The Medicines Company, Theravance, Bio2 Medical, Cempra, Meiji Seika Pharm Co., Novella, Regeneron, and SC Pharma. John Love has no disclosures to report. Ralph Augostini received honoraria/consulting fees from Medtronic, Philips, and Respicardia. Svein Faerstrand received honoraria/consultant fees from Medtronic. Sherman S. Wiggins has no disclosures to report. Jeff S. Healey received a research grant from Medtronic and speaker fees from Abbott, Boston Scientific, and Medtronic. Reece Holbrook, Jeff D. Lande, Daniel R. Lexcen and Sara Willey are employed at Medtronic. Khaldoun G. Tarakji received honoraria/consultant fees from AliveCor and Medtronic.

References:

1. Mond HG, Proclemer A. The 11th world survey of cardiac pacing and implantable cardioverter-defibrillators: calendar year 2009--a World Society of Arrhythmia's project. *Pacing Clin Electrophysiol*. 2011;34:1013-27.
2. Tarakji KG, Ellis CR, Defaye P, Kennergren C. Cardiac Implantable Electronic Device Infection in Patients at Risk. *Arrhythm Electrophysiol Rev*. 2016;5:65-71.
3. Greenspon AJ, Patel JD, Lau E, Ochoa JA, Frisch DR, Ho RT, Pavri BB, Kurtz SM. 16-year trends in the infection burden for pacemakers and implantable cardioverter-defibrillators in the United States 1993 to 2008. *J Am Coll Cardiol*. 2011;58:1001-6.
4. Prutkin JM, Reynolds MR, Bao H, Curtis JP, Al-Khatib SM, Aggarwal S, Uslan DZ. Rates of and factors associated with infection in 200 909 Medicare implantable cardioverter-defibrillator implants: results from the National Cardiovascular Data Registry. *Circulation*. 2014;130:1037-43.
5. Kusumoto FM, Schoenfeld MH, Wilkoff BL, Berul CI, Birgersdotter-Green UM, Carrillo R, Cha YM, Clancy J, Deharo JC, Ellenbogen KA, et al. 2017 HRS expert consensus statement on cardiovascular implantable electronic device lead management and extraction. *Heart Rhythm*. 2017;14:e503-e551.
6. Sohail MR, Henrikson CA, Jo Braid-Forbes M, Forbes KF, Lerner DJ. Increased long-term mortality in patients with cardiovascular implantable electronic device infections. *Pacing Clin Electrophysiol*. 2015;38:231-9.
7. Tarakji KG, Wazni OM, Harb S, Hsu A, Saliba W, Wilkoff BL. Risk factors for 1-year mortality among patients with cardiac implantable electronic device infection undergoing transvenous lead extraction: the impact of the infection type and the presence of vegetation on survival. *Europace*. 2014;16:1490-5.
8. Greenspon AJ, Eby EL, Petrilla AA, Sohail MR. Treatment patterns, costs, and mortality among Medicare beneficiaries with CIED infection. *Pacing Clin Electrophysiol*. 2018;41:495-503.
9. Sohail MR, Eby EL, Ryan MP, Gunnarsson C, Wright LA, Greenspon AJ. Incidence, Treatment Intensity, and Incremental Annual Expenditures for Patients Experiencing a Cardiac Implantable Electronic Device Infection: Evidence From a Large US Payer Database 1-Year Post Implantation. *Circ Arrhythm Electrophysiol*. 2016;9.
10. Shariff N, Eby E, Adelstein E, Jain S, Shalaby A, Saba S, Wang NC, Schwartzman D. Health and Economic Outcomes Associated with Use of an Antimicrobial Envelope as a Standard of Care for Cardiac Implantable Electronic Device Implantation. *J Cardiovasc Electrophysiol*. 2015;26:783-9.

11. Tarakji KG, Mittal S, Kennergren C, Corey R, Poole JE, Schloss E, Gallastegui J, Pickett RA, Evonich R, Philippon F, et al. Antibacterial Envelope to Prevent Cardiac Implantable Device Infection. *N Engl J Med*. 2019;380:1895-1905.
12. Tarakji KG, Mittal S, Kennergren C, Corey R, Poole J, Stromberg K, Lexcen DR, Wilkoff BL. Worldwide Randomized Antibiotic Envelope Infection Prevention Trial (WRAP-IT). *Am Heart J*. 2016;180:12-21.
13. Torrance GW. Utility approach to measuring health-related quality of life. *J Chronic Dis*. 1987;40:593-603.
14. Shaw JW, Johnson JA, Coons SJ. US valuation of the EQ-5D health states: development and testing of the D1 valuation model. *Med Care*. 2005;43:203-20.
15. CPT copyright 2018. American Medical Association. All rights reserved. CPT is a registered trademark of the American Medical Association. Applicable FARS/DARS restrictions apply to government use. Fee schedules, relative value units, conversion factors and/or related components are not assigned by the AMA, are not part of CPT, and the AMA is not recommending their use. The AMA does not directly or indirectly practice medicine or dispense medical services. The AMA assumes no liability for the data contained or not contained herein.
16. The ICD-10-PCS 2018 table and index are now available at <https://www.cms.gov/Medicare/Coding/ICD10/2018-ICD-10-CM-and-GEMs.html>.
17. ICD-10-CM/PCS MS-DRG v35.0 Definitions Manual at https://www.cms.gov/ICD10Manual/Version36-fullcode-cms/fullcode_cms/P0002.html.
18. ICD-9-PCS electronic files are available at <http://www.who.int/classifications/apps/icd/ClassificationDownload>.
19. Medicare costs are available at <https://www.medicare.gov>.
20. Premier Healthcare Database White Paper: Data that informs and performs, February 18, 2018. Premier Applied Sciences, Premier Inc.
21. Krahn AD, Longtin Y, Philippon F, Birnie DH, Manlucu J, Angaran P, Rinne C, Coutu B, Low RA, Essebag V, et al. Prevention of Arrhythmia Device Infection Trial: The PADIT Trial. *J Am Coll Cardiol*. 2018;72:3098-3109.
22. Sohail MR, Henrikson CA, Braid-Forbes MJ, Forbes KF, Lerner DJ. Mortality and cost associated with cardiovascular implantable electronic device infections. *Arch Intern Med*. 2011;171:1821-8.
23. Tarakji KG, Chan EJ, Cantillon DJ, Doonan AL, Hu T, Schmitt S, Fraser TG, Kim A, Gordon SM, Wilkoff BL. Cardiac implantable electronic device infections: presentation, management, and patient outcomes. *Heart Rhythm*. 2010;7:1043-7.

24. Kay G, Eby EL, Brown B, Lyon J, Eggington S, Kumar G, Fenwick E, Sohail MR, Wright DJ. Cost-effectiveness of TYRX absorbable antibacterial envelope for prevention of cardiovascular implantable electronic device infection. *J Med Econ*. 2018;21:294-300.
25. Luo N, Johnson J, Coons SJ. Using instrument-defined health state transitions to estimate minimally important differences for four preference-based health-related quality of life instruments. *Med Care*. 2010;48:365-71.
26. Porter ME. What is value in health care? *N Engl J Med*. 2010;363:2477-81.



Circulation: Arrhythmia and Electrophysiology

Table 1. Geography Poolability Analysis

Variable	Non-US Sites	US Sites	P-value
Length of hospitalization (days)*	26.0	13.5	0.0134
Number of hospitalizations*	1.6	1.7	0.8686
HCU intensity [†]			
No system removal, had at least one inpatient hospitalization	4	4	0.6414
No system removal, no inpatient hospitalization	2	1	
System removed only; no new system implanted	7	12	
System removed; new system implanted	14	26	

* T-test

[†] Chi-squared test

Abbreviations: OUS = outside US

Table 2. Baseline demographics and clinical characteristics of patients with and without major infection within 12 months

Characteristic*	Cohort with Major Infections (N = 67)	US Cohort with Major Infections (N = 41)	Cohort with no Major Infection (N = 6836)
Age			
No. of pts evaluated	67	41	6836
Mean – year	70.2 ± 12.0	71.2 ± 12.1	70.02 ± 12.5
Female Sex – n (%)	19 (28.4%)	14 (34.1%)	1930 (28.2%)
Body-mass index[†]			
No. of pts evaluated	67	41	6808
Mean	28.0 ± 6.1	28.9 ± 7.1	29.2 ± 6.2
Medical History – n (%)			
Cardiomyopathy	50 (74.6%)	32 (78.0%)	4651 (68.0%)
CAD	31 (46.3%)	23 (56.1%)	2871 (42.0%)
Myocardial Infarction	18 (26.9%)	11 (26.8%)	1886 (27.6%)
COPD	5 (7.5%)	3 (7.3%)	859 (12.6%)
Diabetes	23 (34.3%)	12 (29.3%)	2124 (31.1%)
Renal dysfunction	12 (17.9%)	6 (14.6%)	1115 (16.3%)
Cardiovascular Surgical History – n (%)			
CABG	18 (26.9%)	13 (31.7%)	1459 (21.3%)
Valve surgery	7 (10.4%)	5 (12.2%)	611 (8.9%)
Number of prior CIEDs			
No. of pts evaluated	67	41	6832
Mean	1.4 ± 1.1	1.6 ± 1.1	1.2 ± 0.9
Time since first CIED			
No. of pts evaluated	53	34	5454
Mean – year	9.2 ± 4.8	9.9 ± 5.2	9.1 ± 5.0
Previous CIED infection[‡]	4 (6.0%)	2 (4.9%)	93 (1.4%)
CIED Type Received			
Pacemaker	10 (14.9%)	8 (19.5%)	1401 (20.5%)
CRT-pacemaker	5 (7.5%)	1 (2.4%)	296 (4.3%)
ICD	11 (16.4%)	6 (14.6%)	1784 (26.1%)
CRT-D	41 (61.2%)	26 (63.4%)	3355 (49.1%)

* Plus–minus values are means ± SD.

[†] The body-mass index is the weight in kilograms divided by the square of the height in meters (kg/m²).

[‡] Shown are patients with a CIED infection more than 12 months before trial enrollment.

CABG denotes coronary-artery bypass grafting, CAD coronary artery disease, CIED cardiac implantable electronic device, COPD chronic obstructive pulmonary disease, CRT-D cardiac resynchronization therapy defibrillator, CRT-P cardiac resynchronization therapy pacemaker and ICD implantable cardioverter defibrillator.

Figure Legends:

Figure 1. Kaplan-Meier All-cause Mortality Curves. (A) Patients with (Cohort with Major Infections) and without Infections (Cohort with no Major Infections). Hazard ratios and P-values are calculated using Cox proportional regression modeling. As compared with the no infection group, infections were associated with an increased risk of death. The effect on mortality was sustained beyond 12 months. (B) KM curve and 95% CI for Patients with Major Infection from Infection Onset. Of the patients in the Cohort with Major Infections, the KM estimates of mortality after major infection onset were 16% at 12 months and 23% at 24 months. CI = confidence interval, KM = Kaplan-Meier, HR = hazard ratio



Figure 2. Quality of Life. Impact of infections on quality of life. Data were analyzed using linear mixed-effects modeling. EQ-5D utilities were significantly reduced at time of infection diagnosis vs. baseline and did not normalize until 6 months post-diagnosis. Dots represent the mean and the whiskers represent the 95% CI. CI = confidence interval, EQ-5D = EuroQOL-5D

Figure 3. CIED Therapy Disruption. Time spent without previously indicated CIED therapy. Widths of the paths are proportional to the number of patients in the Sankey Diagram indicating treatment pathway for infections with (blue) and without (orange) CIED therapy disruption. Approximately 36% of infections involved disruption of CIED therapy. CIED = cardiac implantable electronic device

Figure 4. Payer and Hospital Costs and Margins. (A) Total payer costs per infection in the US Cohort with Major Infections for Medicare FFS and Medicare Advantage. (B) Total hospital

costs and margins per infection in the US Cohort with Major Infections based on Medicare FFS and Medicare Advantage payments. Box-and-whisker plots represent distribution of data as follows: solid line = median; dashed line = mean; box = interquartile range; whiskers = minimum and maximum within 1.5 times interquartile range; dots = outliers (outside of 1.5 times interquartile range). All currency reflects 2017 US dollars. FFS = fee for service, SD = standard deviation, US = United States



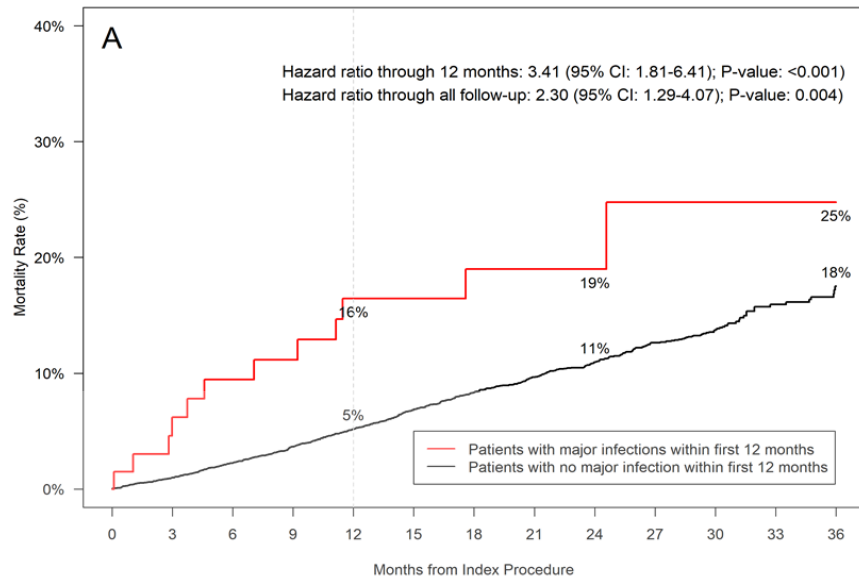
Circulation: Arrhythmia and Electrophysiology

What Is Known:

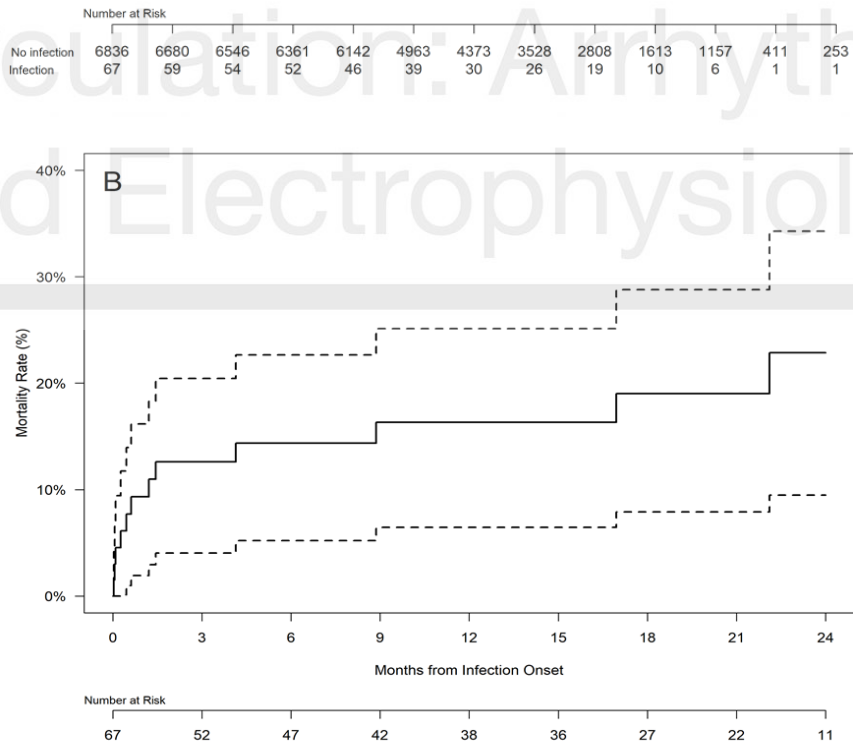
- While cardiac implantable electronic device (CIED) therapies have vastly improved over the decades, patients still experience serious complications such as infection.
- Importantly, the impact of CIED infection is substantial for the individual patient, since infection management typically requires hospitalization, prolonged antibiotic therapy, and complete device and lead removal until the infection is resolved.

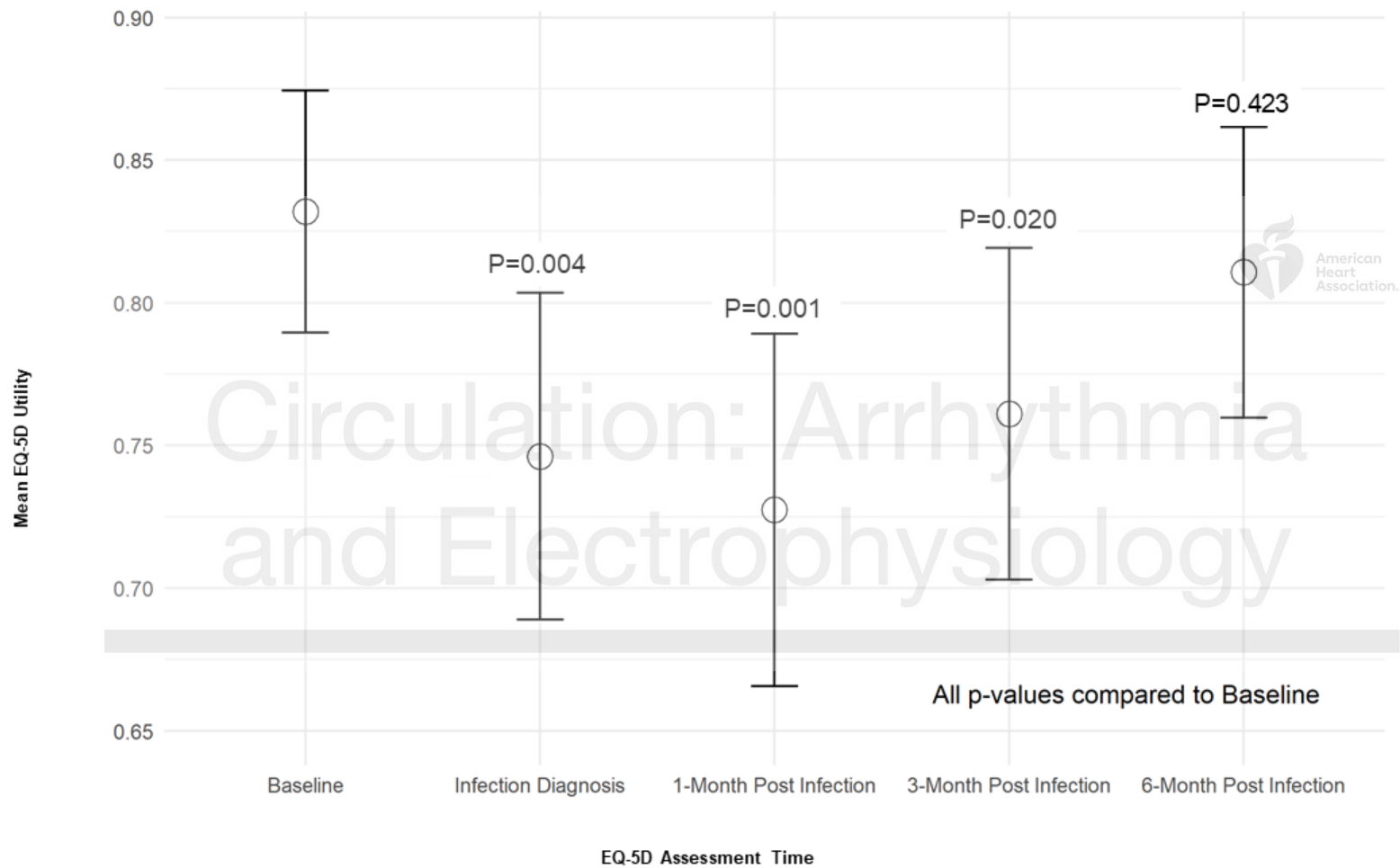
What the Study Adds:

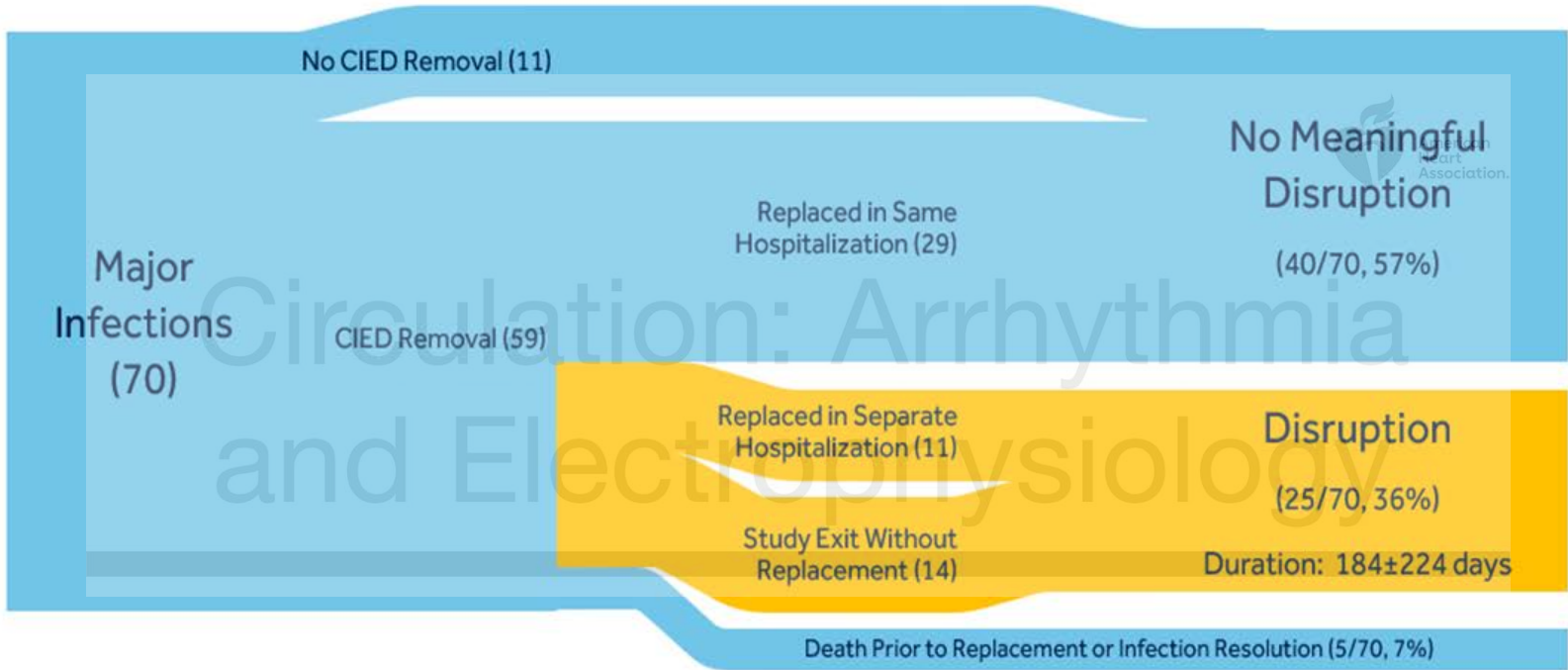
- The prospective, multicenter design of the WRAP-IT trial offers a unique opportunity to evaluate the clinical and economic impact of CIED infection in the US healthcare system from the patient, payer, and hospital perspectives, since current understanding is based on retrospective analyses of medical records or administrative claims data.
- In this prospectively collected data set, CIED infections were associated with a greater than three-fold increase in all-cause mortality, a reduction in quality of life (QOL) for 6 months, and a disruption of CIED therapy in 36% of patients. Mean costs were \$55K to the hospital, and \$26K to the payer and \$2.1K to the patient assuming Medicare fee for service (FFS) or \$57K to the payer and \$1.5K to the patient assuming Medicare Advantage.



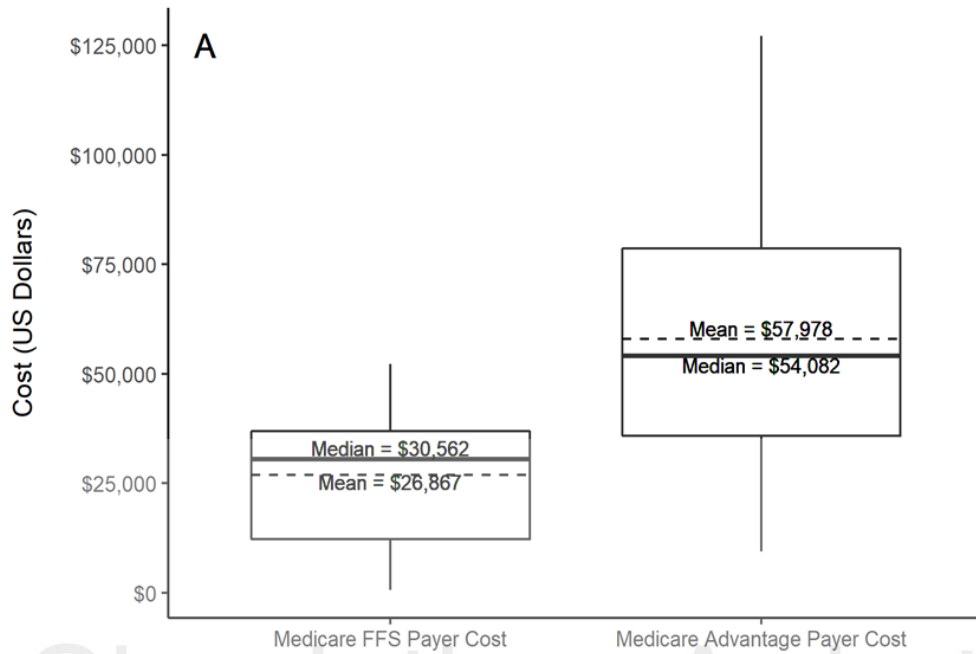
Circulation: Arrhythmia and Electrophysiology



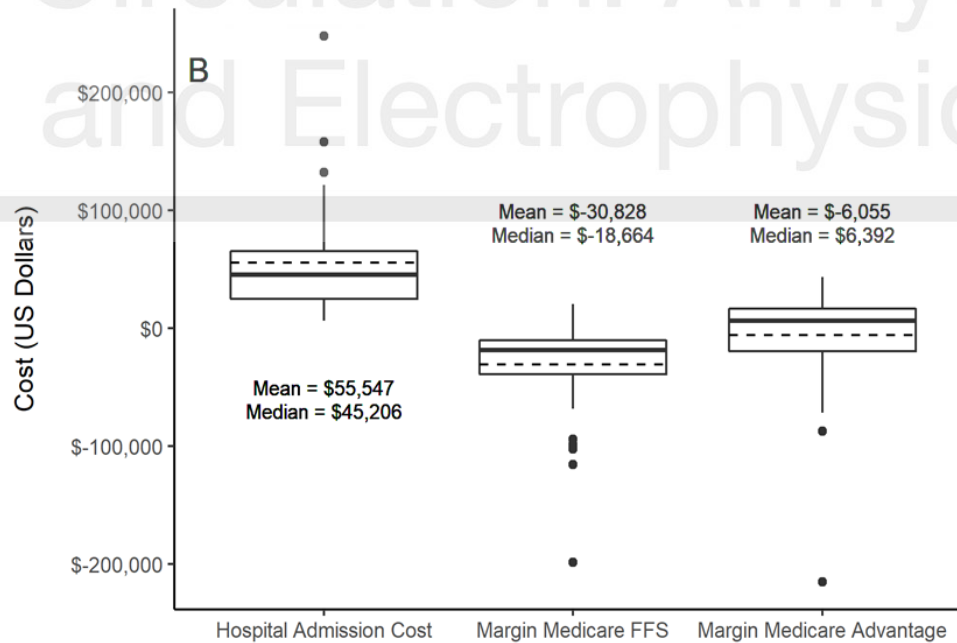




Circulation: Arrhythmia and Electrophysiology

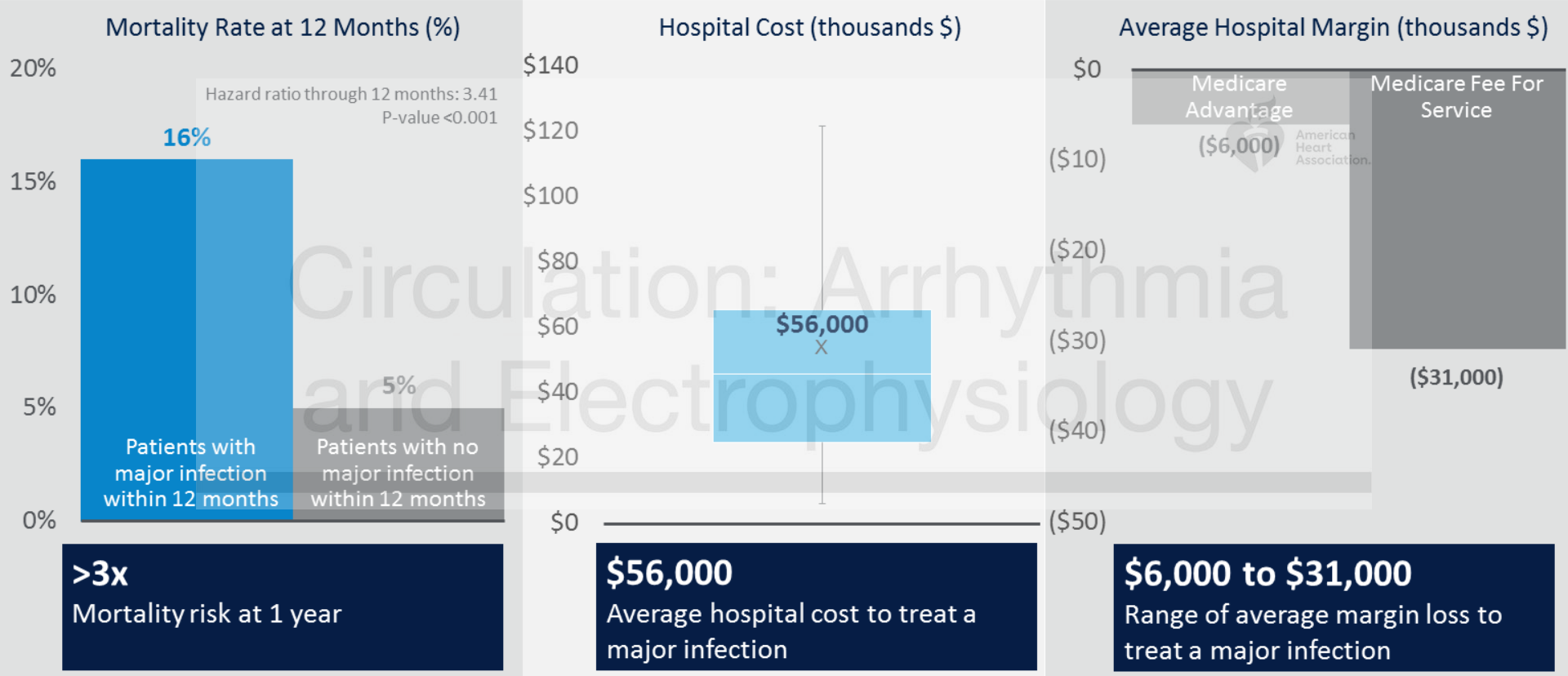


Circulation: Arrhythmia and Electrophysiology



Graphic Abstract

IMPACT OF CIED INFECTION A CLINICAL AND ECONOMIC ANALYSIS OF THE WRAP-IT STUDY



Wilkoff BL et al. *Circ Arrhythm Electrophysiol.* 2020.