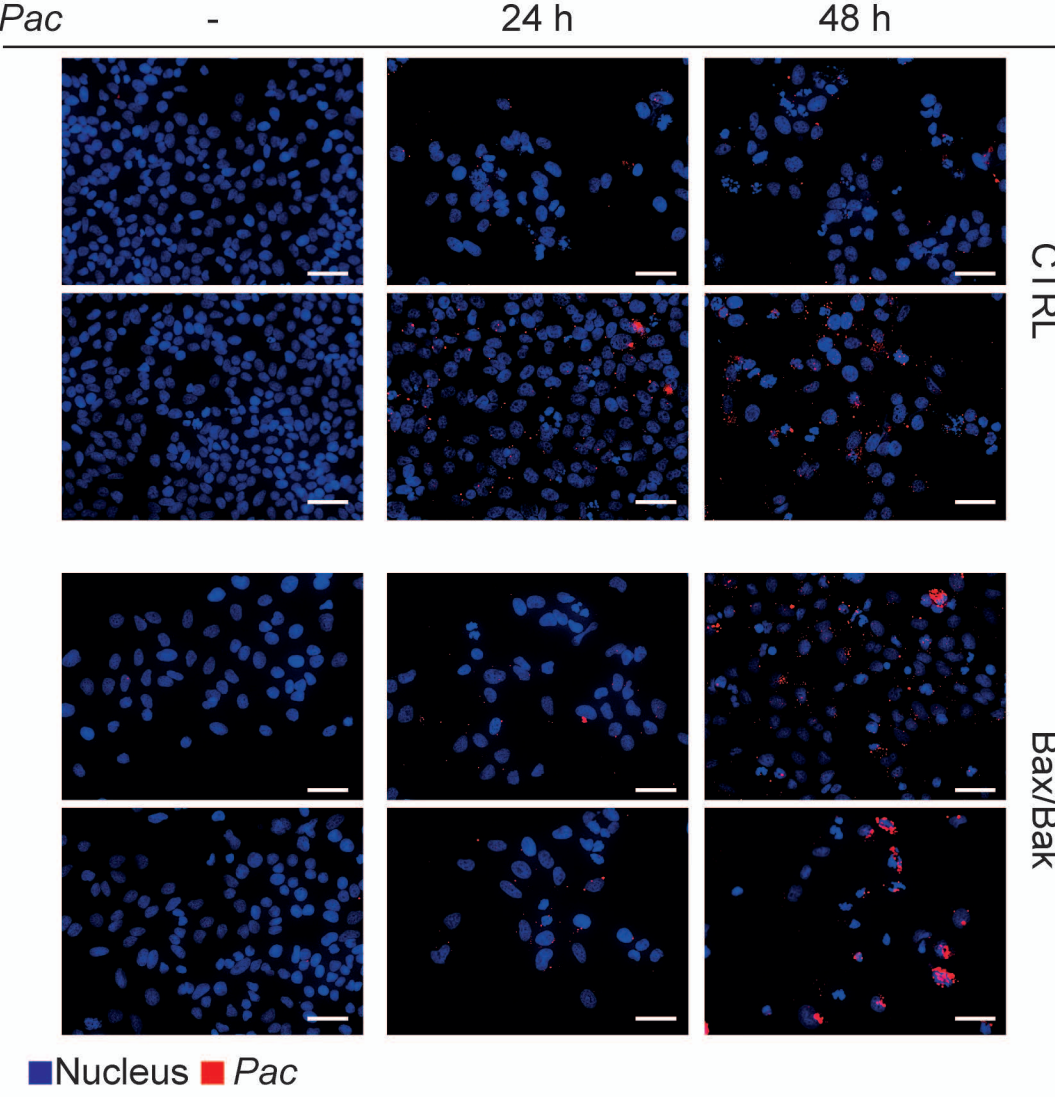


Figure S5

A



B

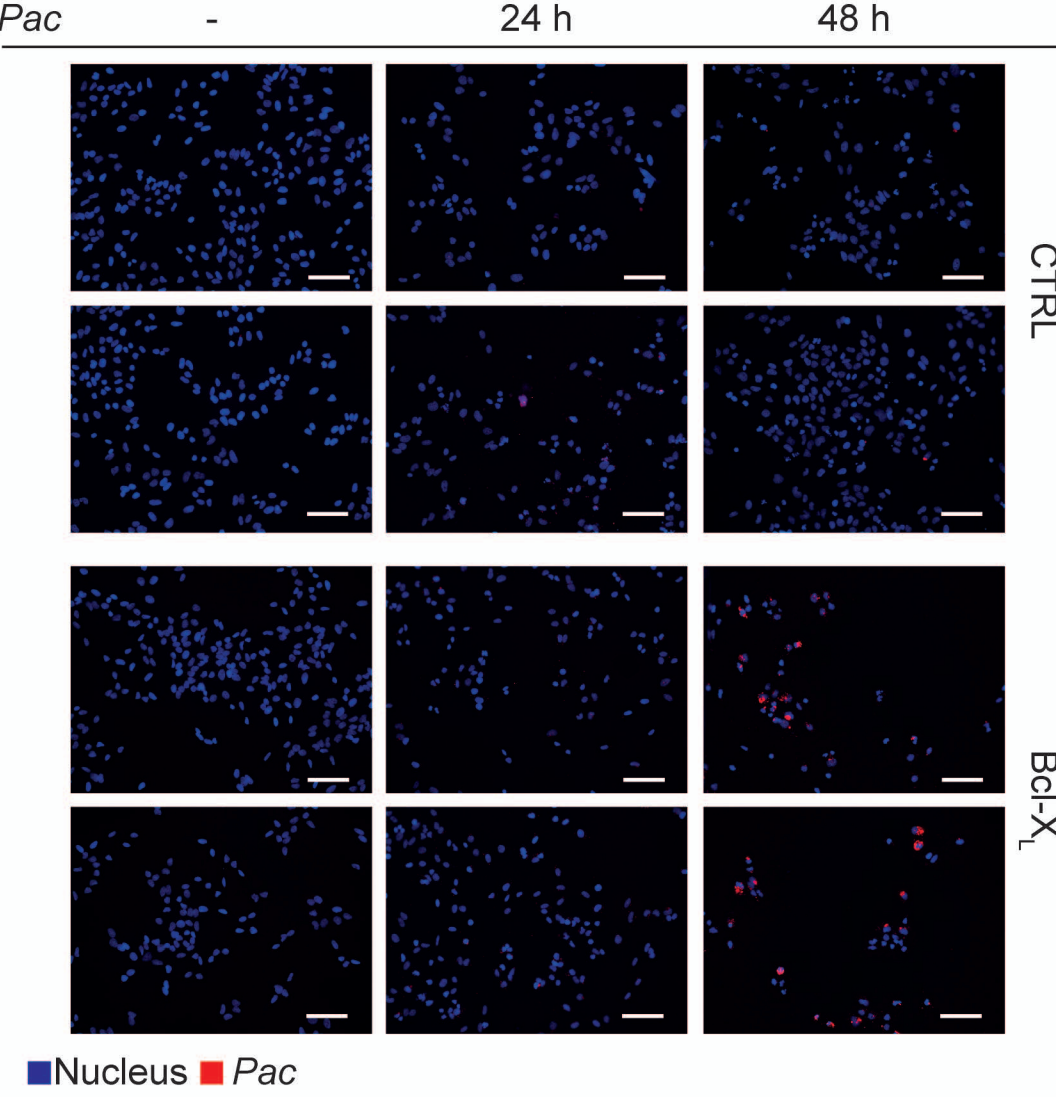
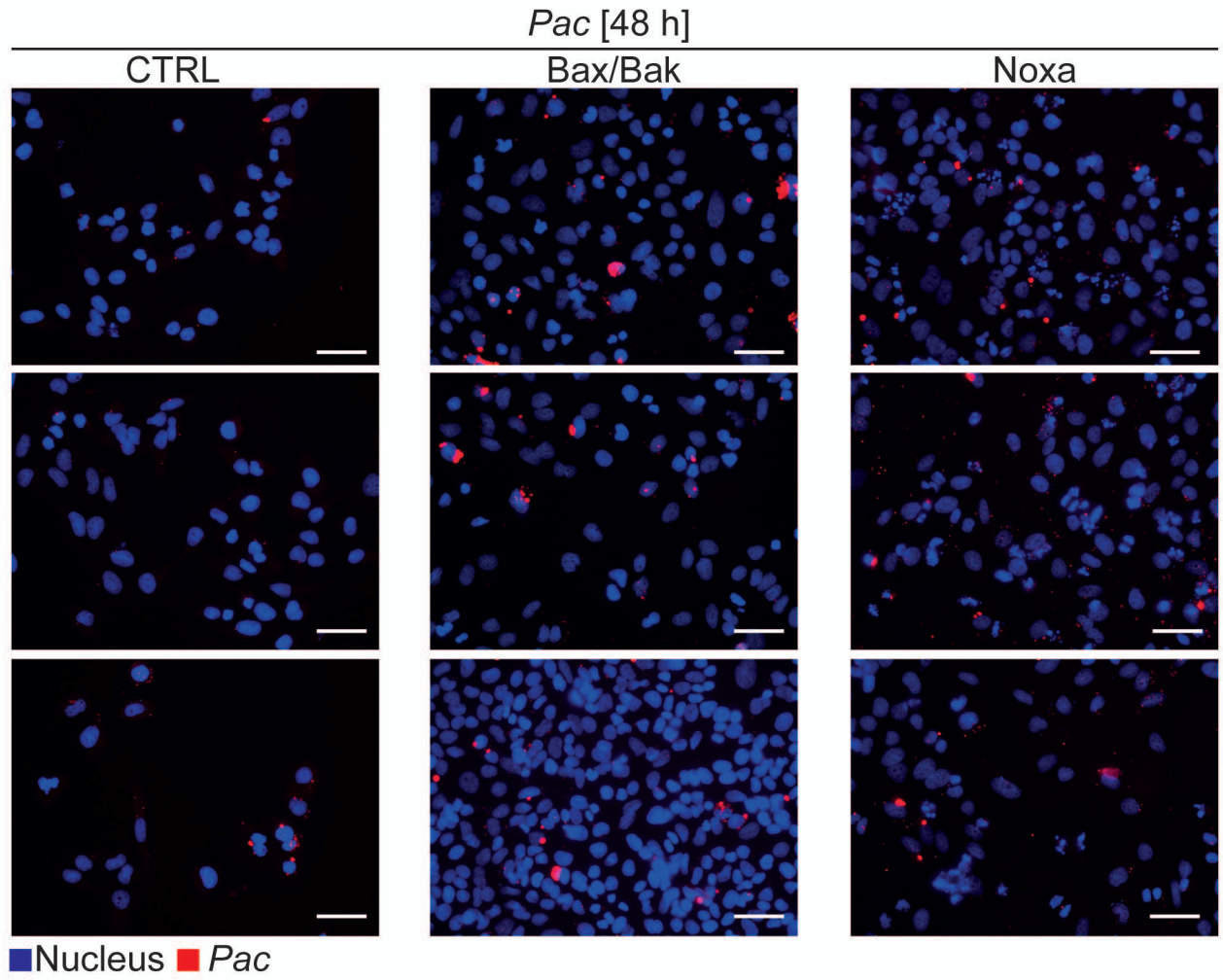


Figure S5

C



D

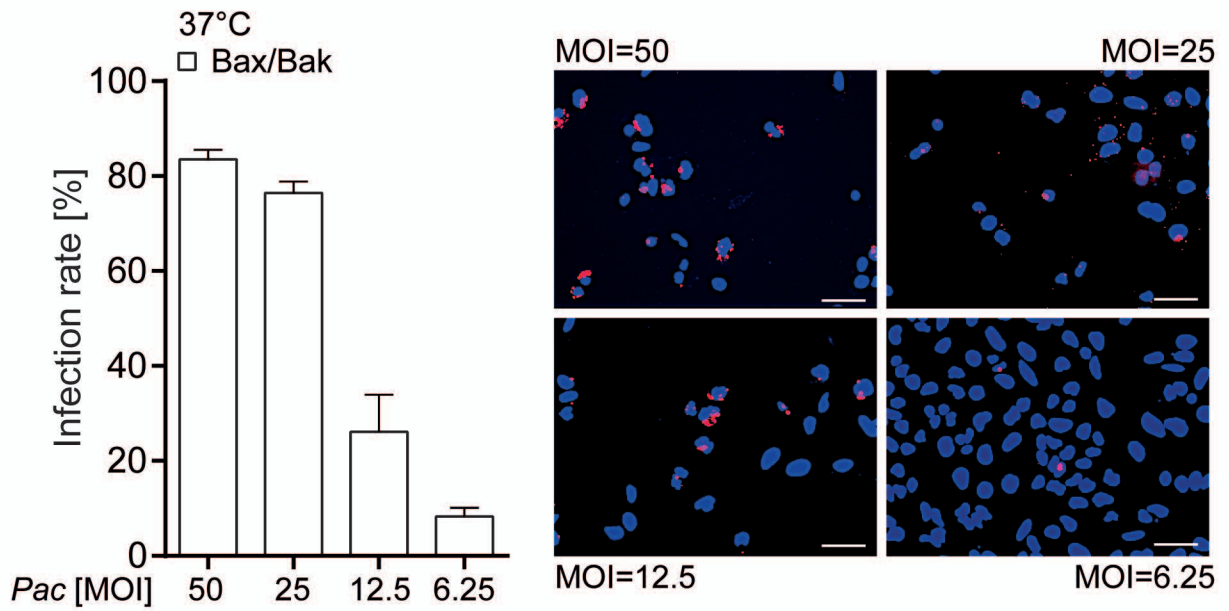


Fig. S5 *Pac* growth in epithelial cells detected by fluorescence in-situ hybridization.

HeLa cells (CTRL, Bax/Bak-deficient, Bcl-X_L-overexpressing and Noxa-deficient) were infected with *Pac* (MOI=25 (A-C) or *Pac* titration (D)). Bacterial infection was visualized by FISH and fluorescence microscopy. Nuclei of host cells are counter-stained with Hoechst-33342. Shown are two pictures per cell line representative of at least three independent experiments. **A**, uninfected and infected (24 h and 48 h) CTRL or Bax/Bak-deficient cells. **B**, uninfected and infected (24 h and 48 h) CTRL cells or Bcl-X_L-overexpressing cells. **C**, uninfected and infected (48 h) CTRL, Bax/Bak-deficient or Noxa-deficient cells. **D**, Bax/Bak-deficient cells were infected with *Pac* (48 h, MOI=6.25 to 50) and analyzed by FISH (right). Infection rate (left) was calculated as cells showing discernible bacteria. Data are means/SEM of at least three independent experiments.

A, C and D, Scale bars, 50 μ m. B, Scale bars, 100 μ m.