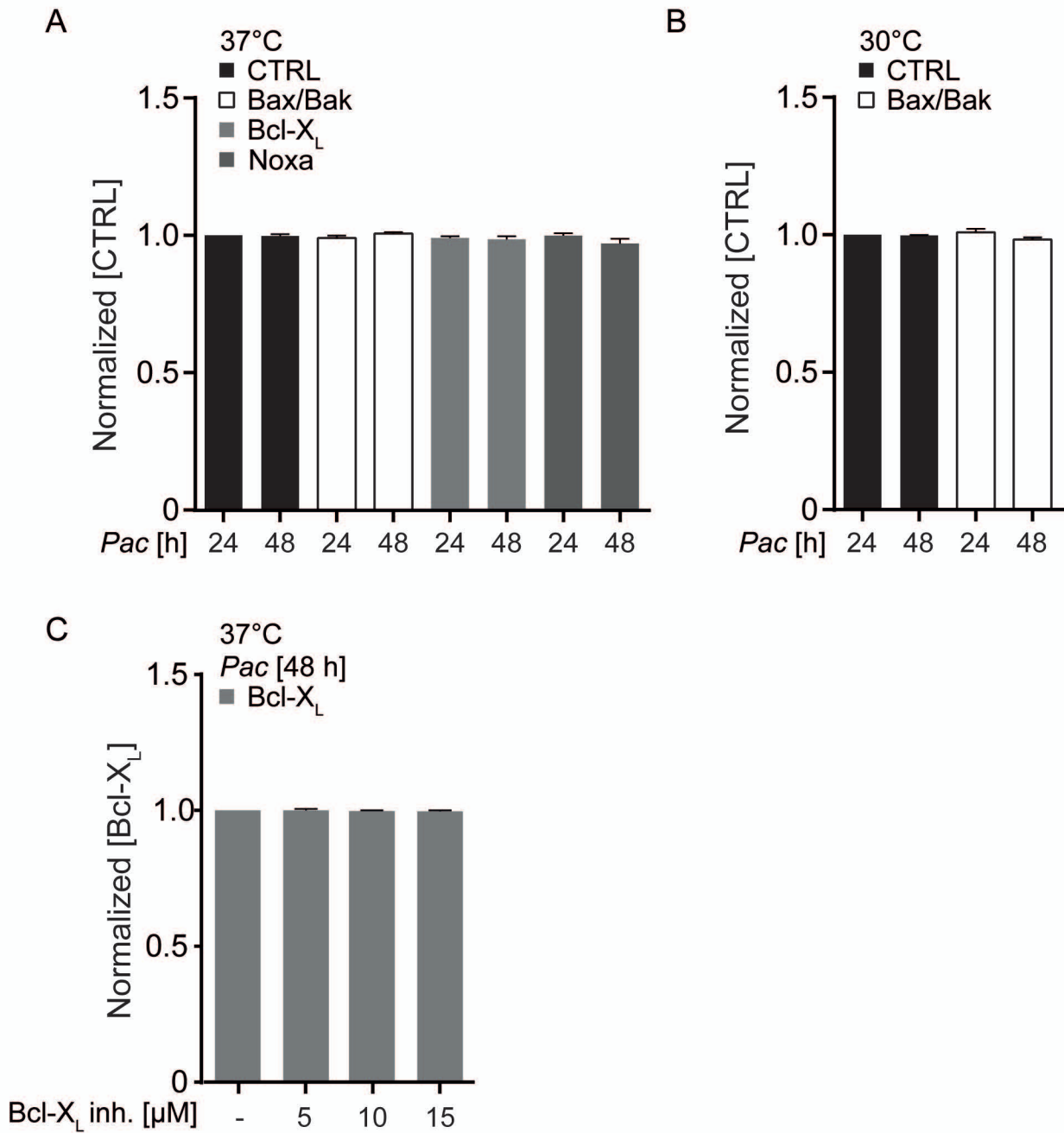


Figure S8



**Fig. S8** *HPRT* gene quantification

The isolated DNA from experiments shown in Fig. 4, A (A) and C (B) and Fig. S3,C (C) was used to quantify the host gene HPRT by qPCR. Ct-values of PCR reactions performed on 50 ng of total DNA isolated from each culture are shown, normalized to the infected CTRL samples 24 h p.i. (A and B) or to infected Bcl-X<sub>L</sub>-overexpression sample without inhibitor treatment (C). MOI was for all experiments 25. Data are means/SEM of at least three independent experiments.