

Figure S9

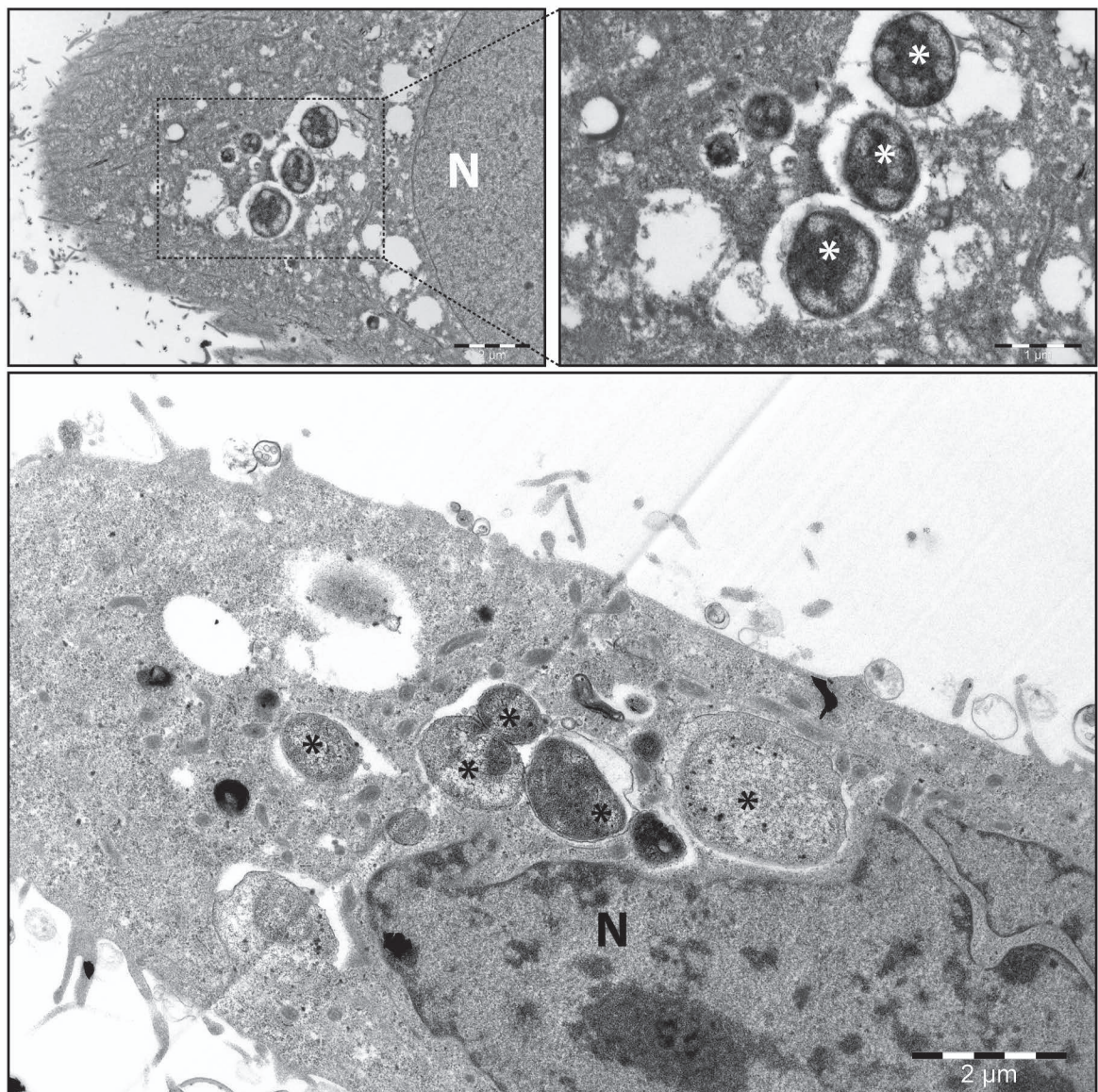


Fig. S9 *Electronic microscopy pictures to detect reticular bodies (RBs).*

Bax/Bak-deficient HeLa cells were infected with *Pac* (MOI=25) for 24 h, fixed and analyzed by electron microscopy. Asterisks indicate RBs. N=Nucleus. Scale bars, 2 μm (upper-left and below) or 1 μm (upper-right).