

Enhanced Thermoelectric Performance of Indacenodithiophene-Benzothiadiazole Copolymer Containing Polar Side Chains and Single Wall Carbon Nanotubes Composites

Zhongming Chen, Tongchao Liu, Chengjun Pan and Guiping Tan

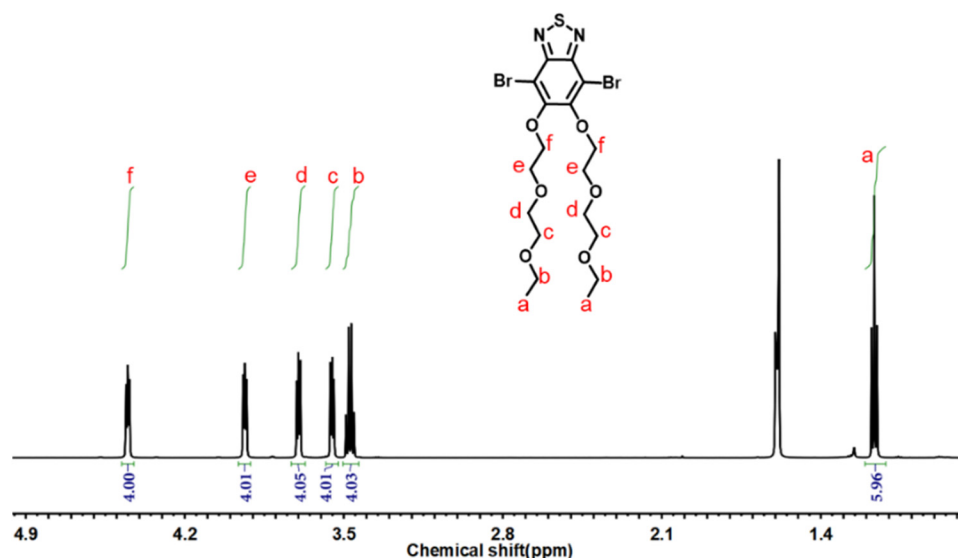


Figure S1. ¹H NMR spectrum of M1.

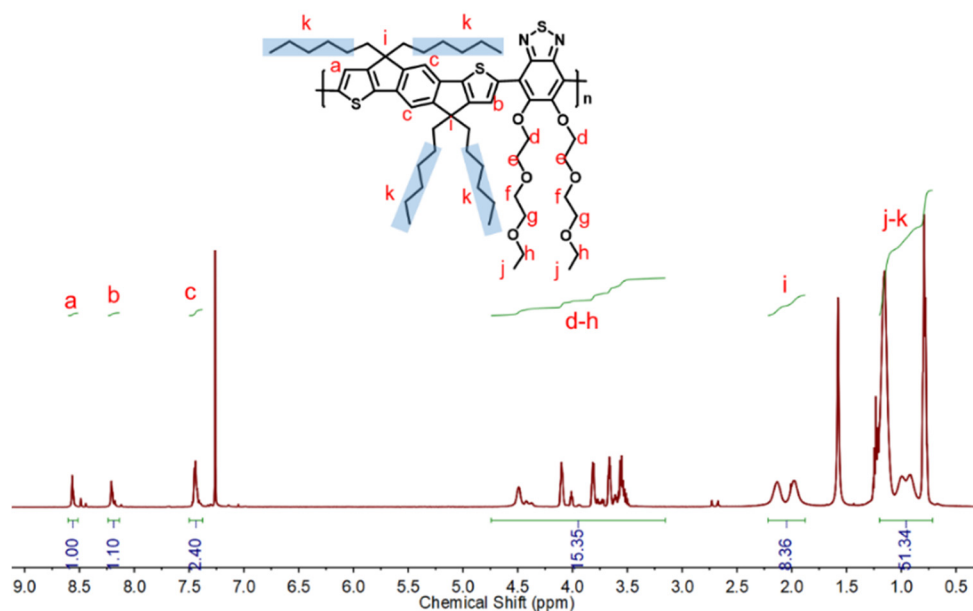


Figure S2. ¹H NMR spectrum of P1.

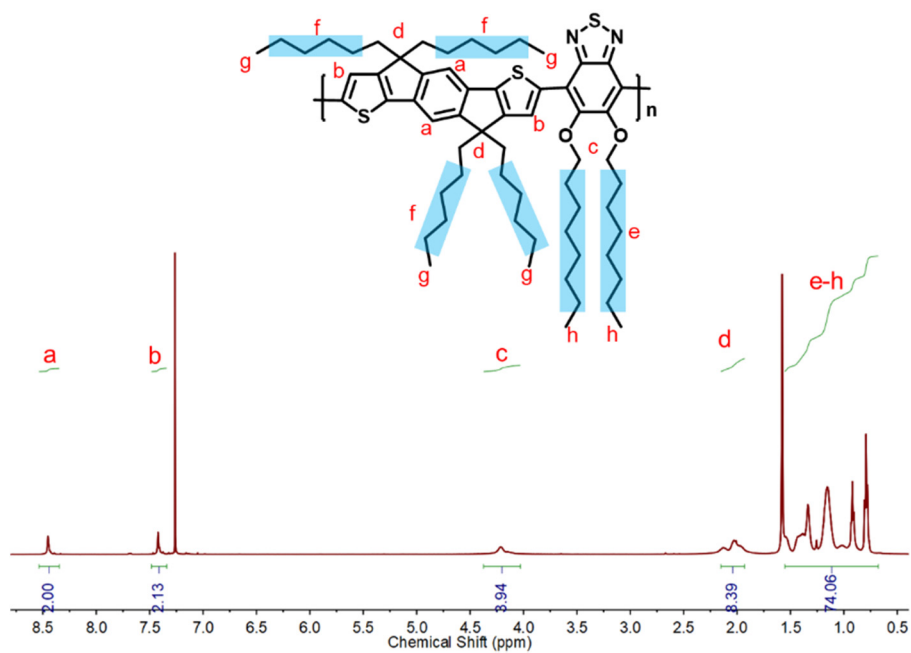


Figure S3. ¹H NMR spectrum of P2.

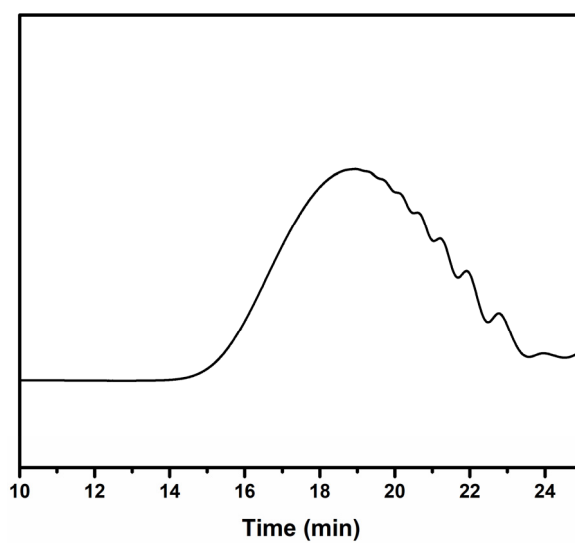


Figure S4. GPC curve of P1.

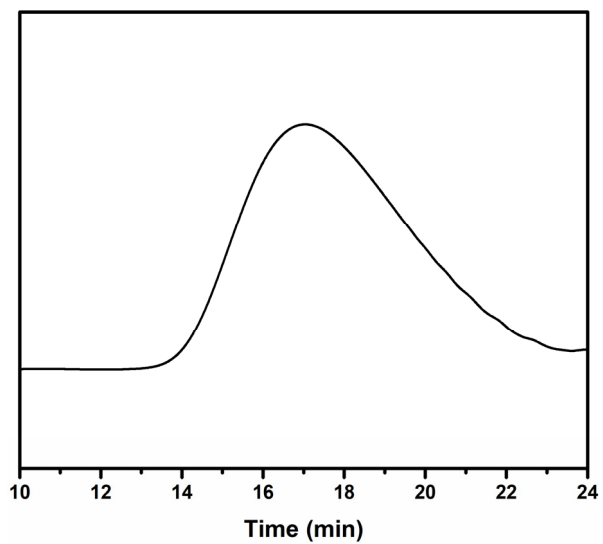


Figure S5. GPC curve of P2.

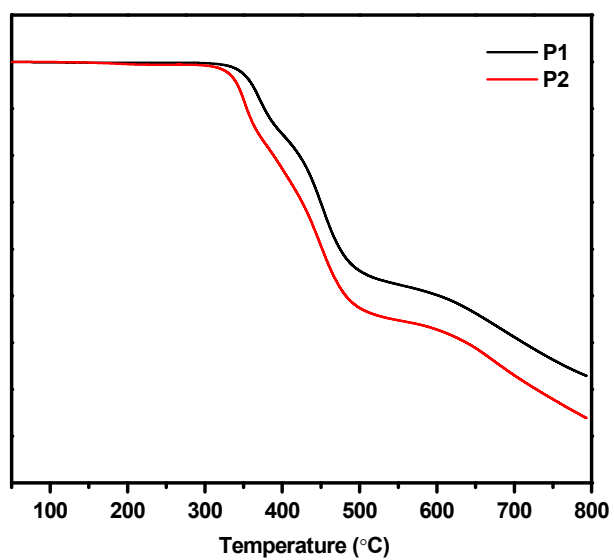


Figure S6. TGA curves of P1 and P2.

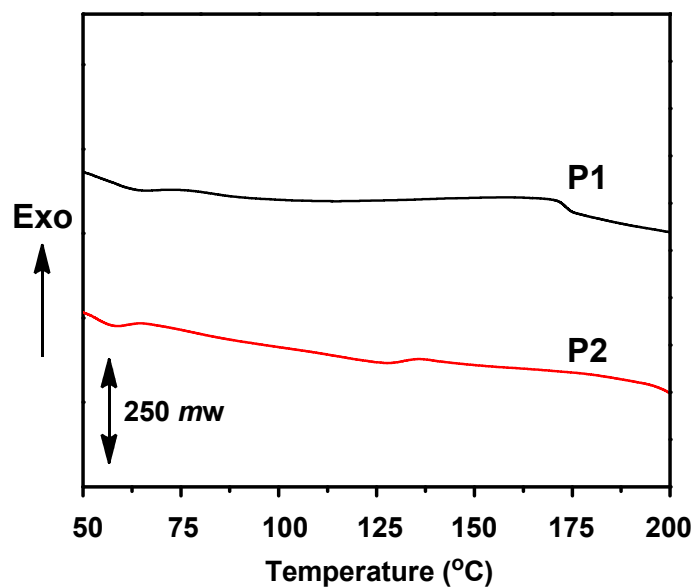


Figure S7. DSC curves of P1 and P2.

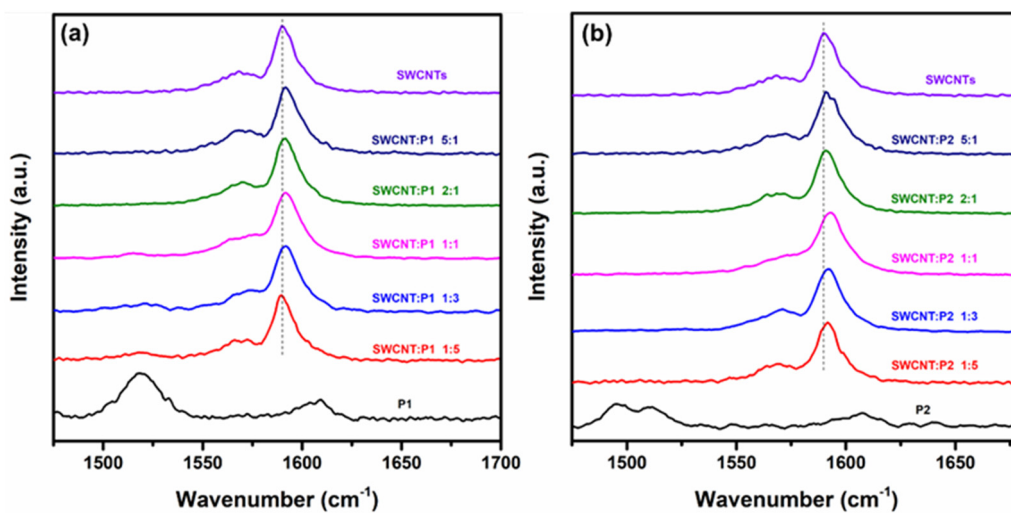


Figure S8. The G-band magnification of P1 films, SWCNTs, the P1/SWCNT composites films (a) and P2 films, SWCNTs, the P2/SWCNT composites films (b).

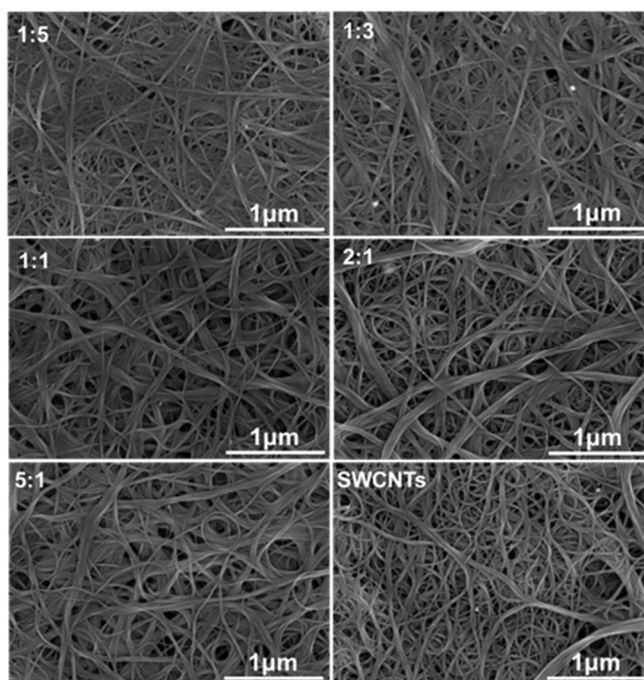
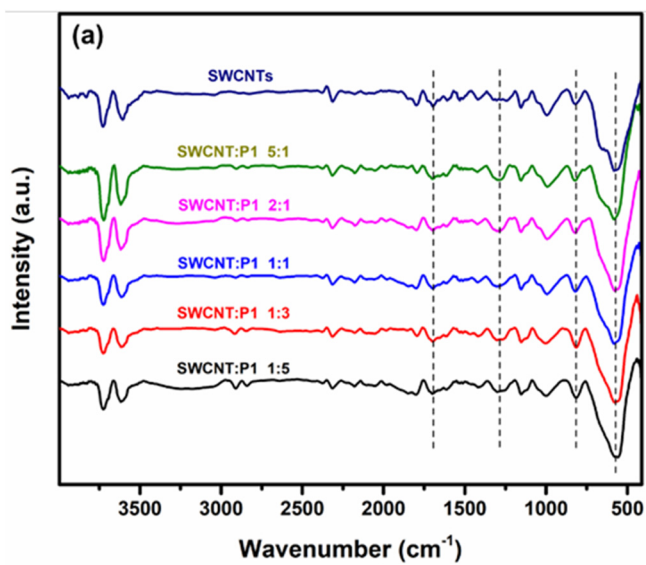


Figure S9. SEM images of P2/SWCNT composite films with different mass ratios of SWCNTs.



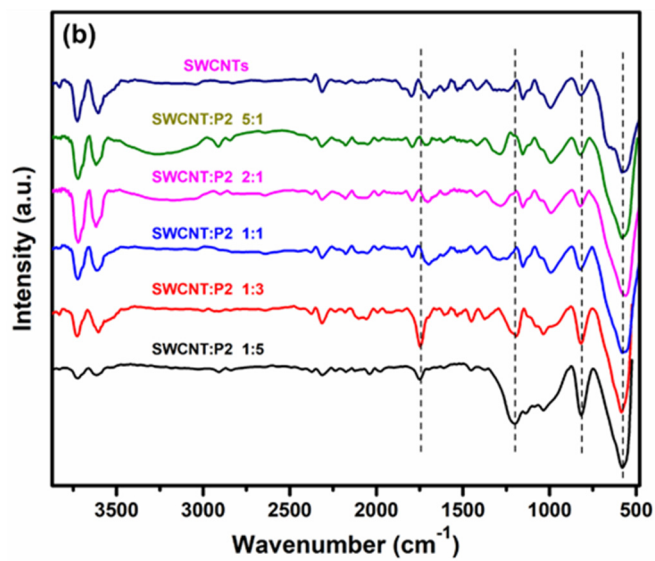


Figure S10. FT-IR spectra of **P1**/SWCNT composite films with different mass ratios of SWCNTs (a) and **P2**/SWCNT composite films with different mass ratios of SWCNTs (b).