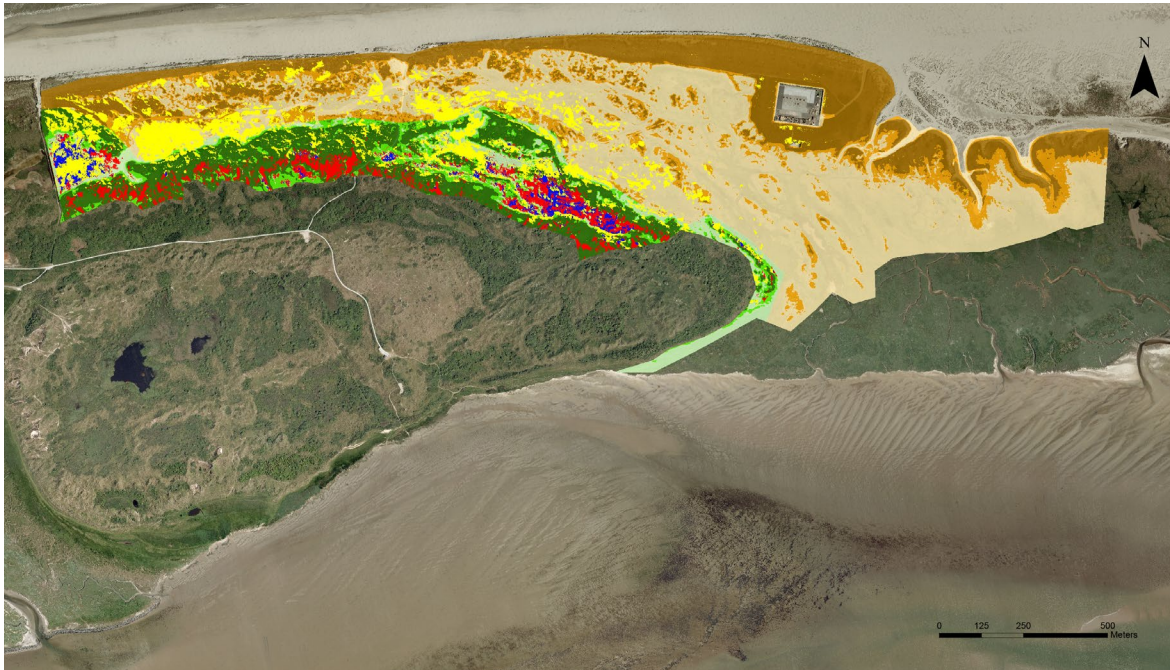


34 **S12 Fig. Sea-buckthorn cover changes between 1959 and**  
35 **1986 (red=disappeared, yellow=appeared, blue=remained).**  
36 **The other colours represent the strata as denoted in Fig 2B**  
37 **of the article. Note that the larger blue/red patches in the**  
38 **far west are sea-buckthorn mixed with willow species (*Salix***  
39 **sp.).**



40

41