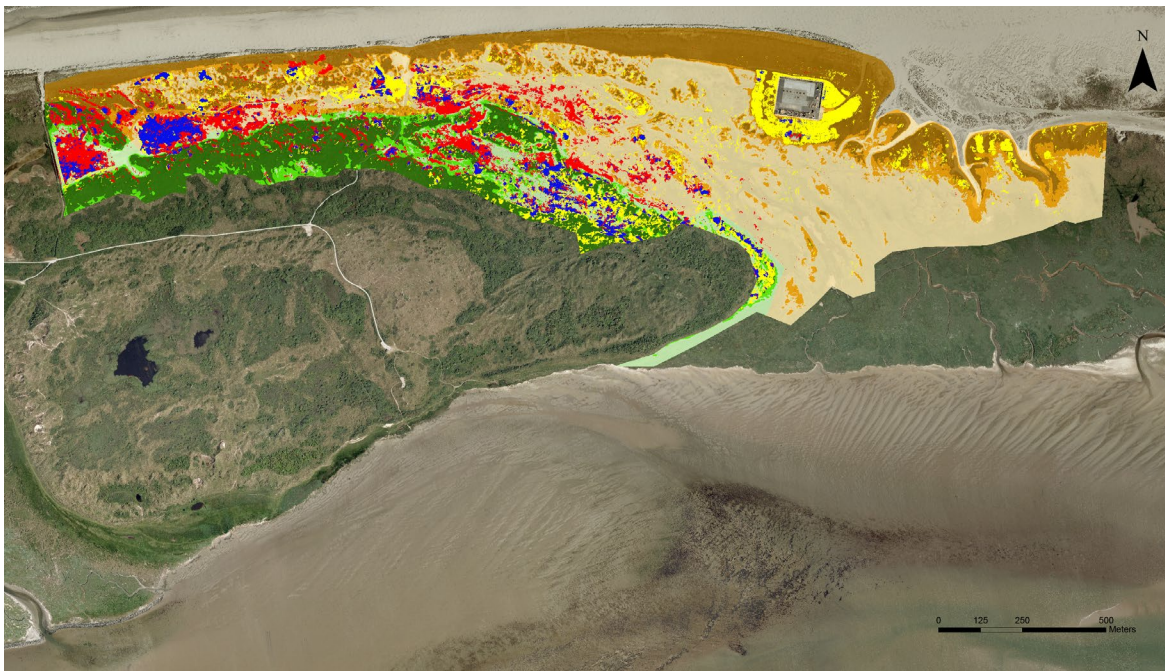


42 **S13 Fig. Sea-buckthorn cover changes between 1986 and**  
43 **2000 (red=disappeared, yellow=appeared, blue=remained).**  
44 **The other colours represent the strata as denoted in Fig 2B**  
45 **of the article. Note that the larger blue/red patches in the**  
46 **far west are sea-buckthorn mixed with willow species (*Salix***  
47 **sp.).**



48

49