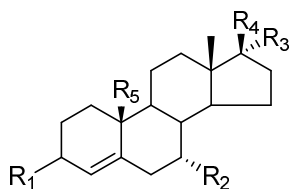


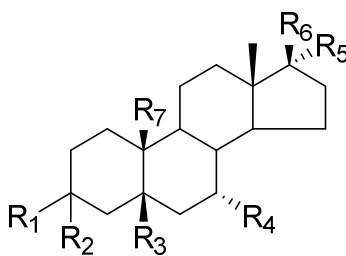
Figure S 1: Calibration curve – Stains-all method. Absorption depending on HMW HA [mg/mL].

Table S 1: Structure and inhibition values of testosterone derivatives



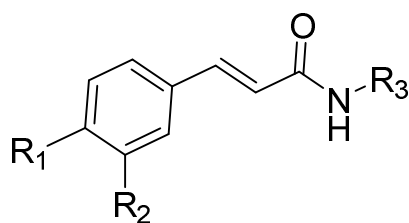
	R ₁	R ₂	R ₃	R ₄	R ₅	inhibition [%] 200 μM
YC338						8
MR241						0
MR234						0
YC208						22
EM383						6
MR123						22
3CMO-Testo						28
EM892						20
EM814						17
Testo-3CMOesterMe						17
YC141						0
MR497						0
MR405						13

Table S 2: Structure and inhibition values of dihydrotestosterone derivatives



	R ₁	R ₂	R ₃	R ₄	R ₅	R ₆	R ₇	Inhibition [%] 200 μM
3CMO-DHT		-						31
EM817								3
MR22		-						0
MR568		-						0
MR572		-						5
MR574		-						18

Table S 3: Structure and inhibition values of cinnamic acid derivatives



	R ₁	R ₂	R ₃	inhibition [%] 200 μM
SB12 + LR78				30
SB14				25
SB15				26
SB16 + SB22				27
SB25				37
SB18				19
SB21				33
SB19 + SB20 + SB23				18
SB26				20
SB27				4
LR76				11
LR 77				0
LR80				0
SB9				0