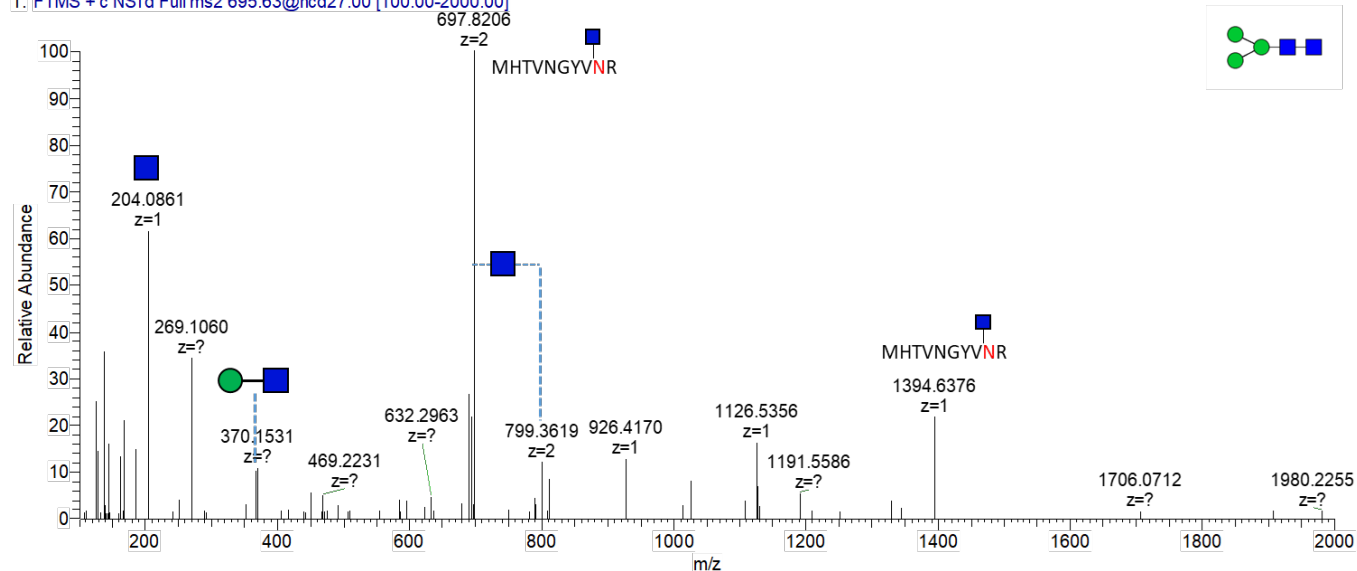


# S1 File. Spectra of identified glycoforms

## 1-N

F8\_HILIC\_JQ #2063 RT: 9.94 AV: 1 NL: 4.52E4

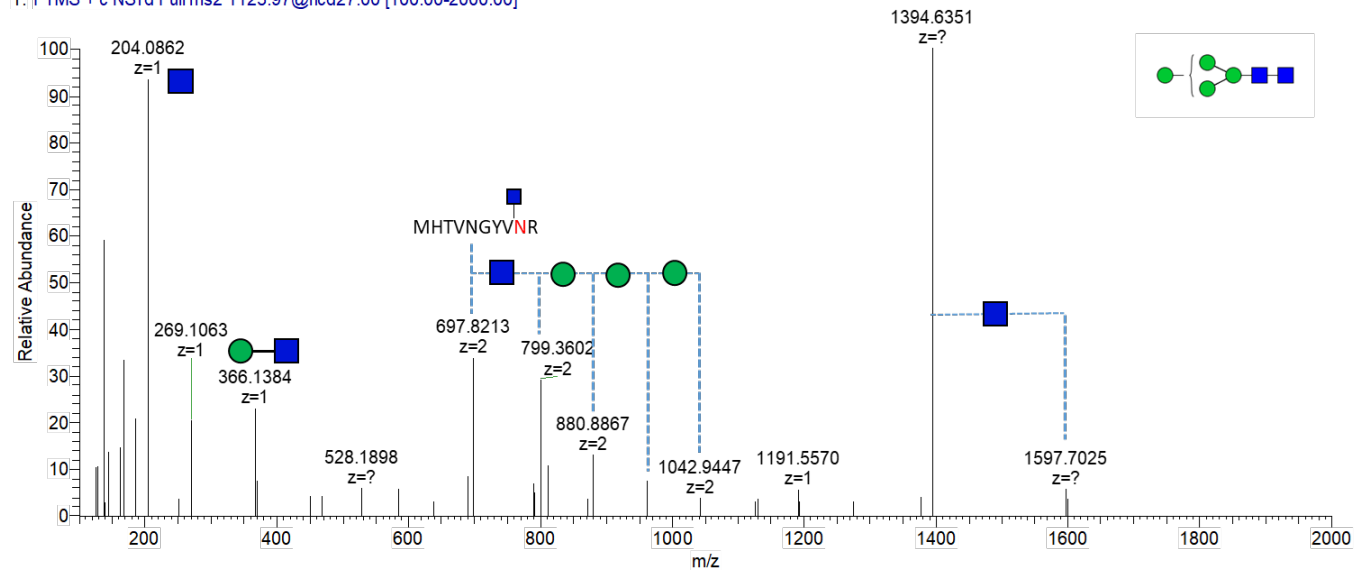
T: FTMS + c NSI d Full ms2 695.63@hcd27.00 [100.00-2000.00]



## 2-N

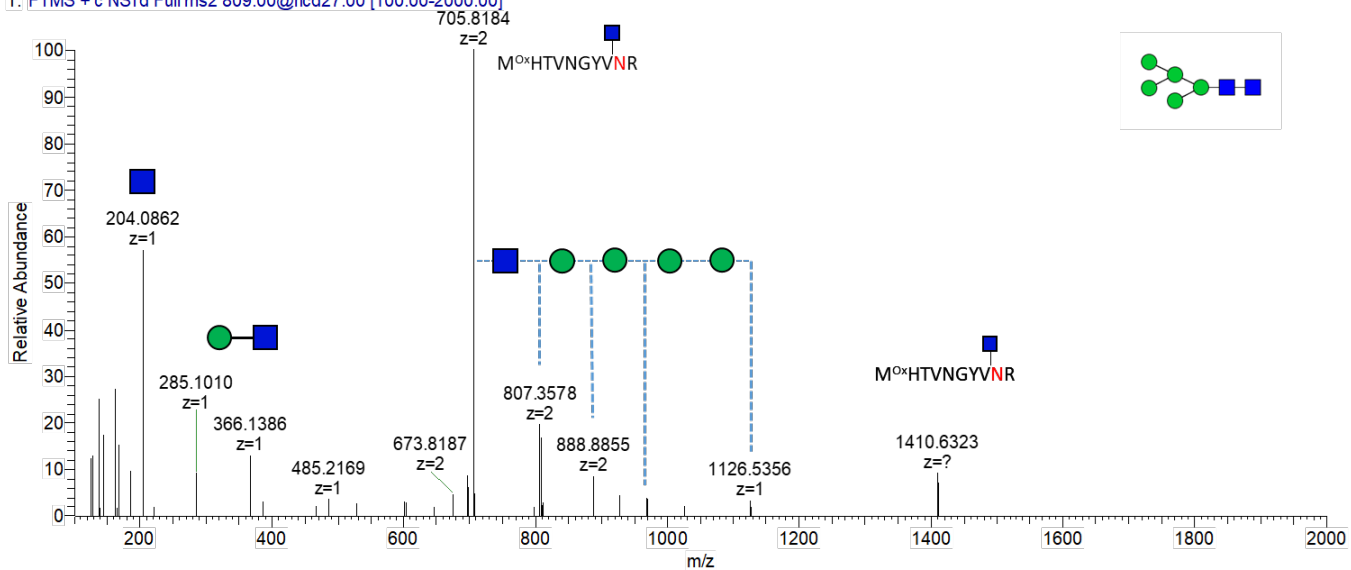
F8\_HILIC\_JQ #2013 RT: 9.79 AV: 1 NL: 7.72E4

T: FTMS + c NSI d Full ms2 1123.97@hcd27.00 [100.00-2000.00]



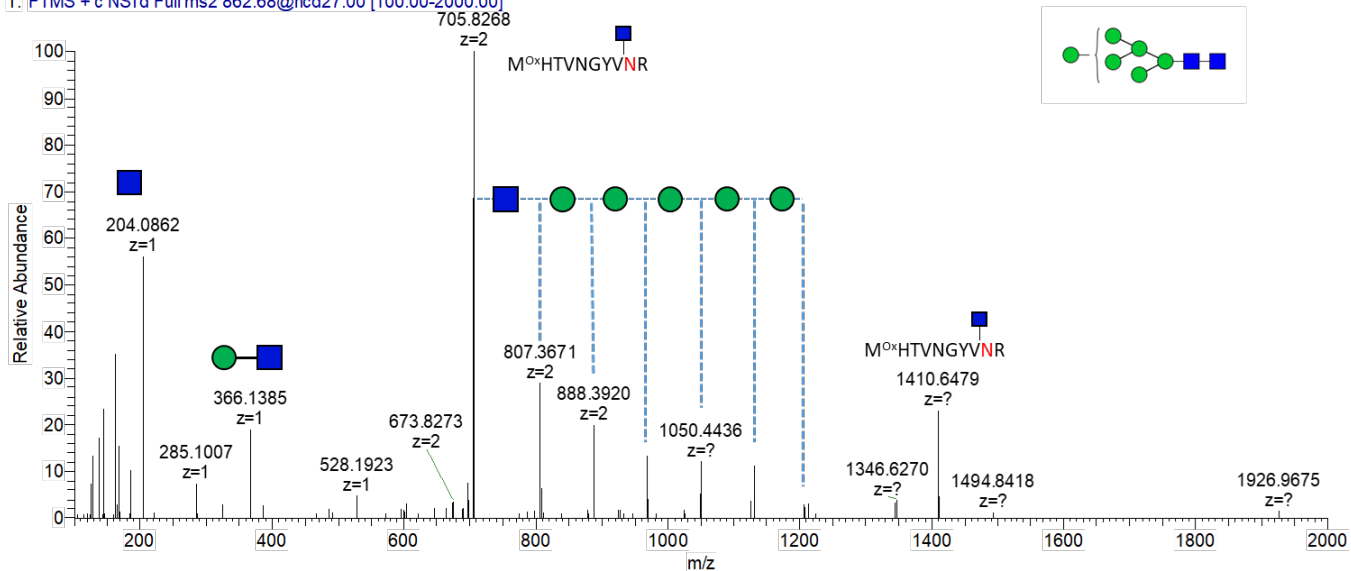
### 3-N

F8\_HILIC\_JQ#1540 RT: 8.31 AV: 1 NL: 3.37E5  
 T: FTMS + c NSI d Full ms2 809.00@hcd27.00 [100.00-2000.00]



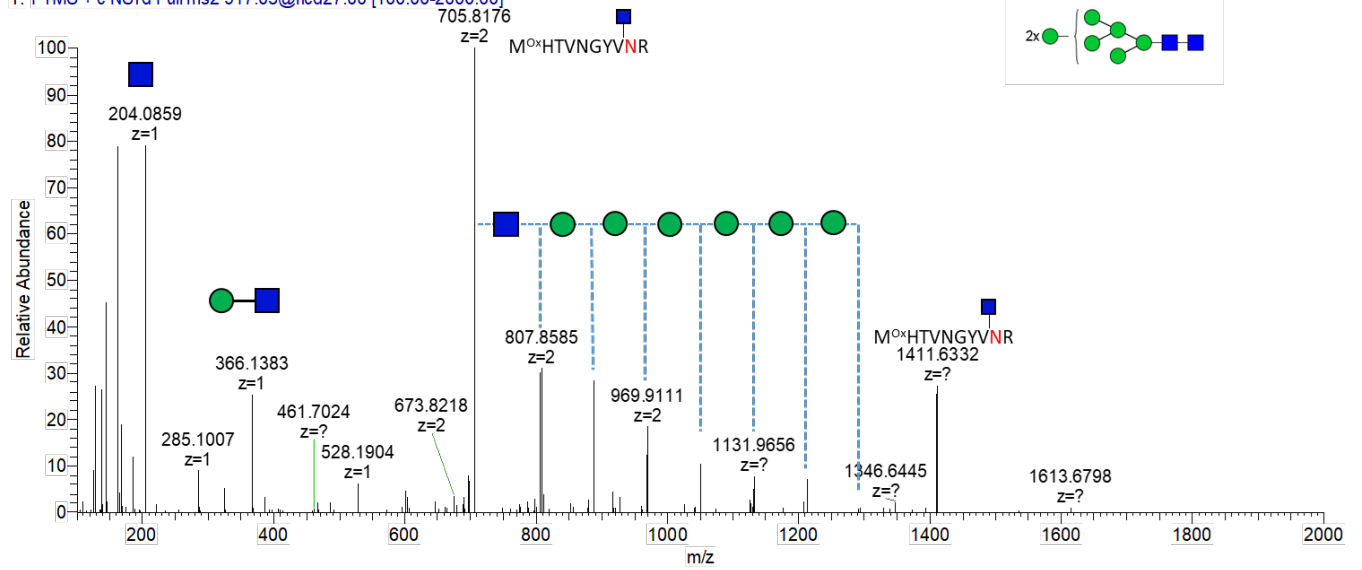
### 4-N

F8\_HILIC\_JQ#1340 RT: 7.53 AV: 1 NL: 1.73E4  
 T: FTMS + c NSI d Full ms2 862.68@hcd27.00 [100.00-2000.00]



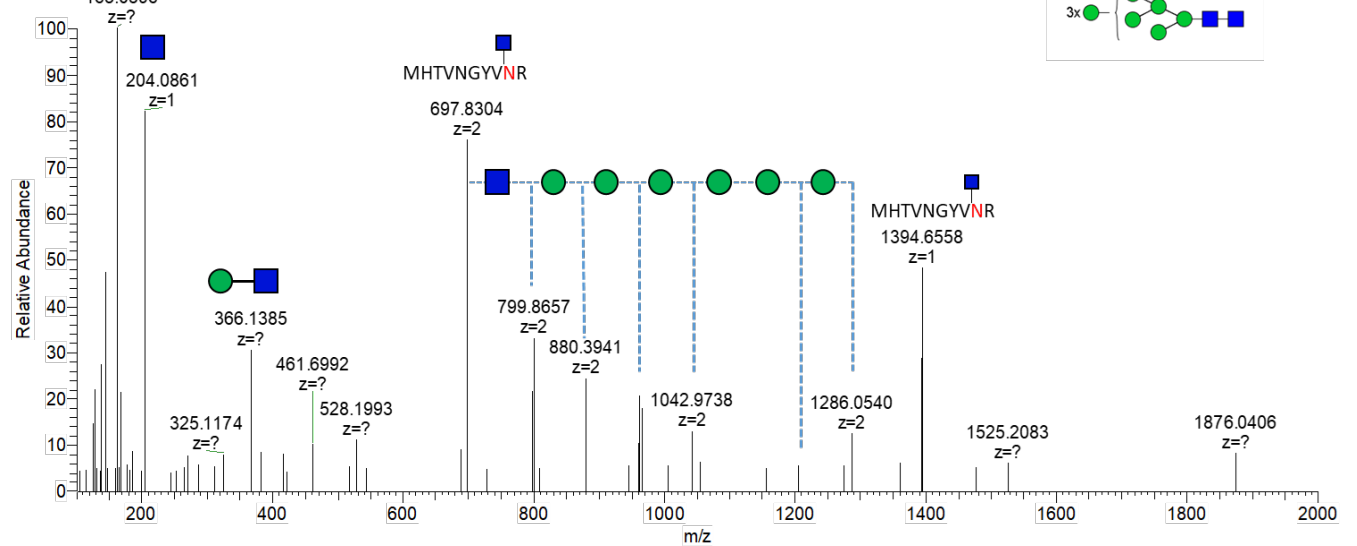
# 5-N

F8\_HILIC\_JQ#1528 RT: 8.27 AV: 1 NL: 5.18E4  
 T: FTMS + c NSI d Full ms2 917.03@hcd27.00 [100.00-2000.00]



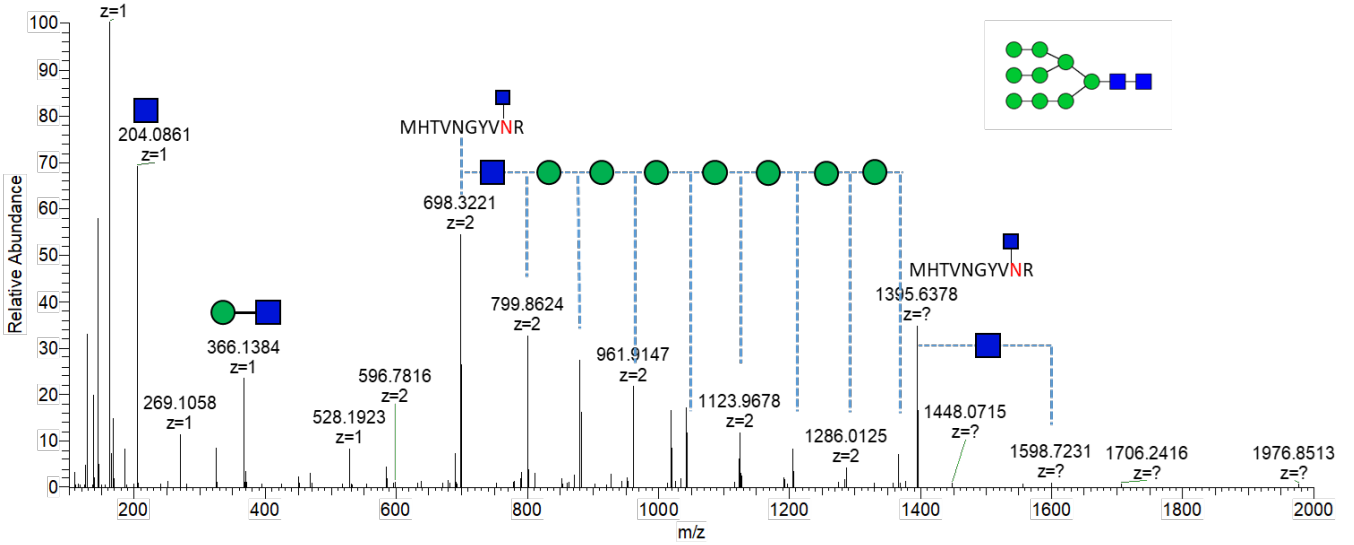
# 6-N

F8\_HILIC\_JQ#1545 RT: 8.33 AV: 1 NL: 6.44E3  
 T: FTMS + c NSI d Full ms2 965.72@hcd27.00 [100.00-2000.00]



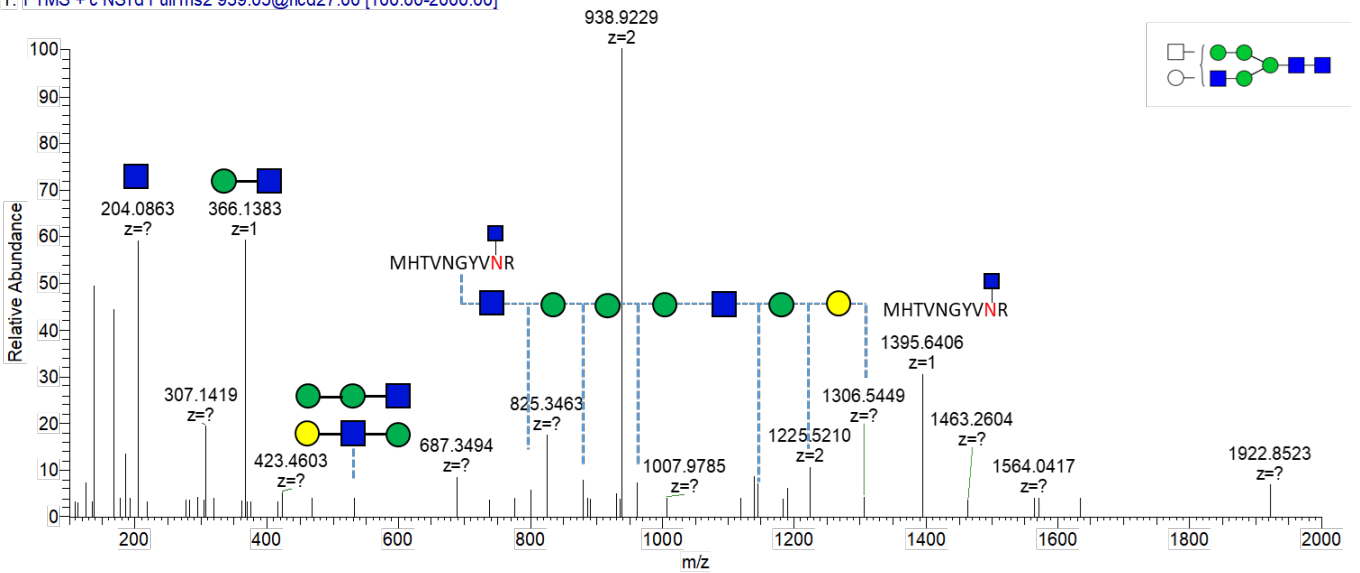
# 7-N

F8\_HILIC\_JQ#1834 RT: 9.22 AV: 1 NL: 3.65E5  
 T: FTMS + c NSI d Full ms2 1019.73@hcd27.00 [100.00-2000.00]  
 163.0597



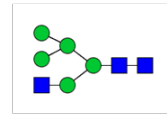
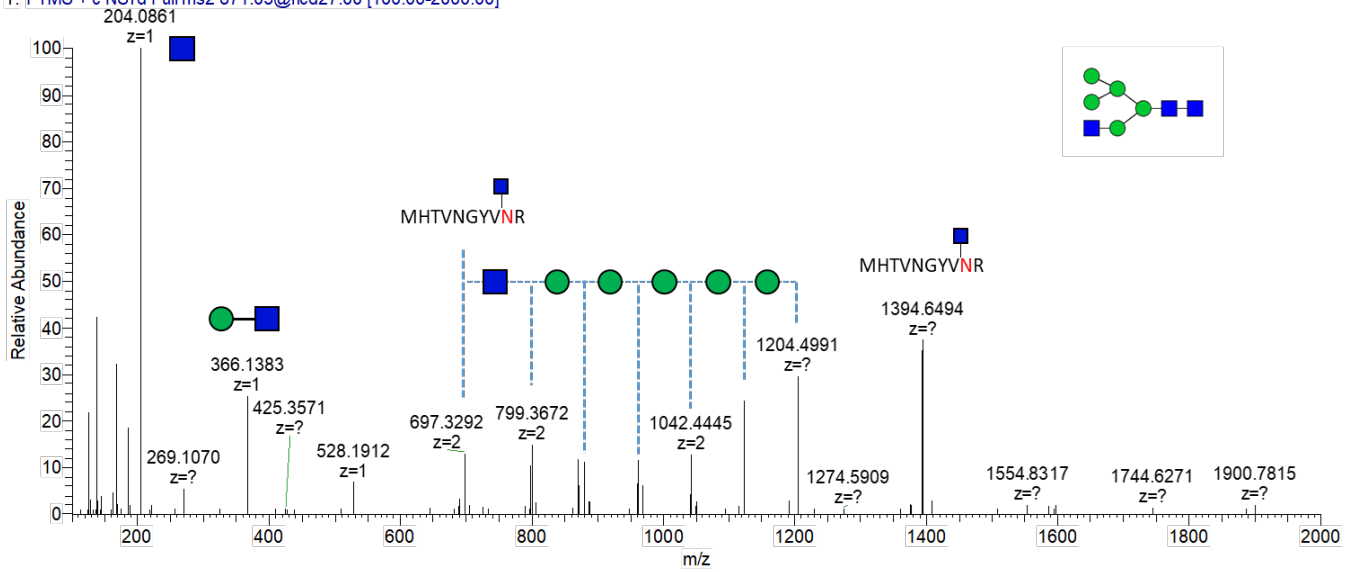
# 8-N

F8\_HILIC\_JQ#2160 RT: 10.24 AV: 1 NL: 3.22E4  
 T: FTMS + c NSI d Full ms2 939.05@hcd27.00 [100.00-2000.00]



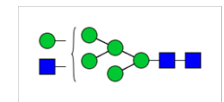
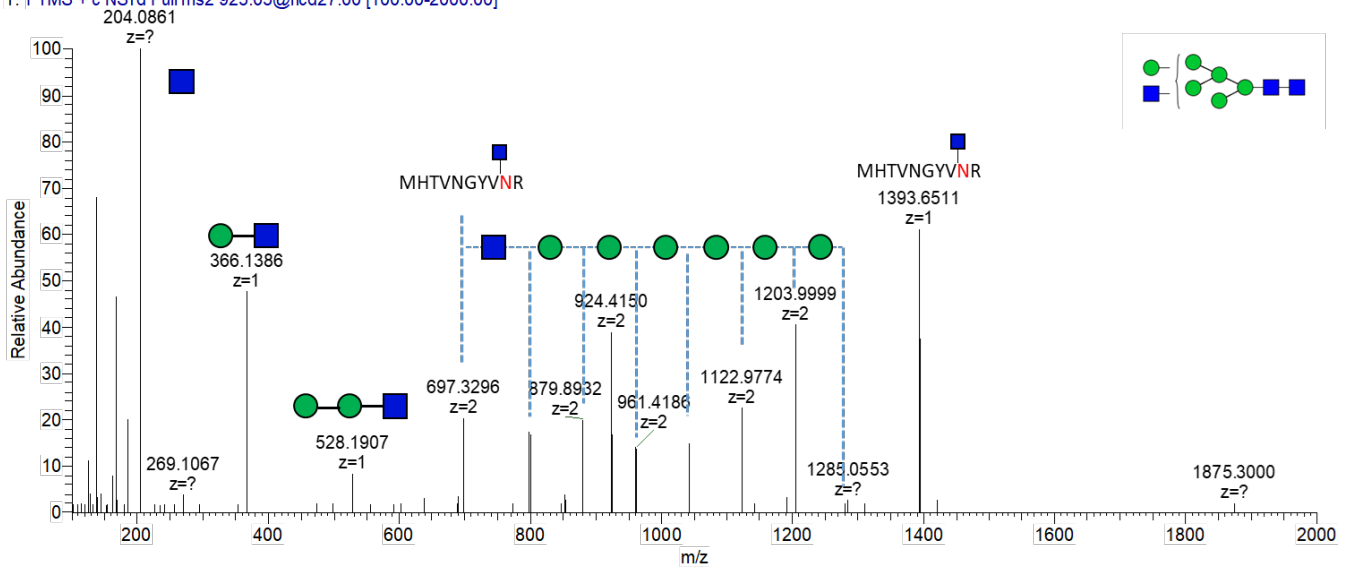
# 9-N

F8\_HILIC\_JQ#1649 RT: 8.66 AV: 1 NL: 9.44E4  
 T: FTMS + c NSI d Full ms2 871.03@hcd27.00 [100.00-2000.00]



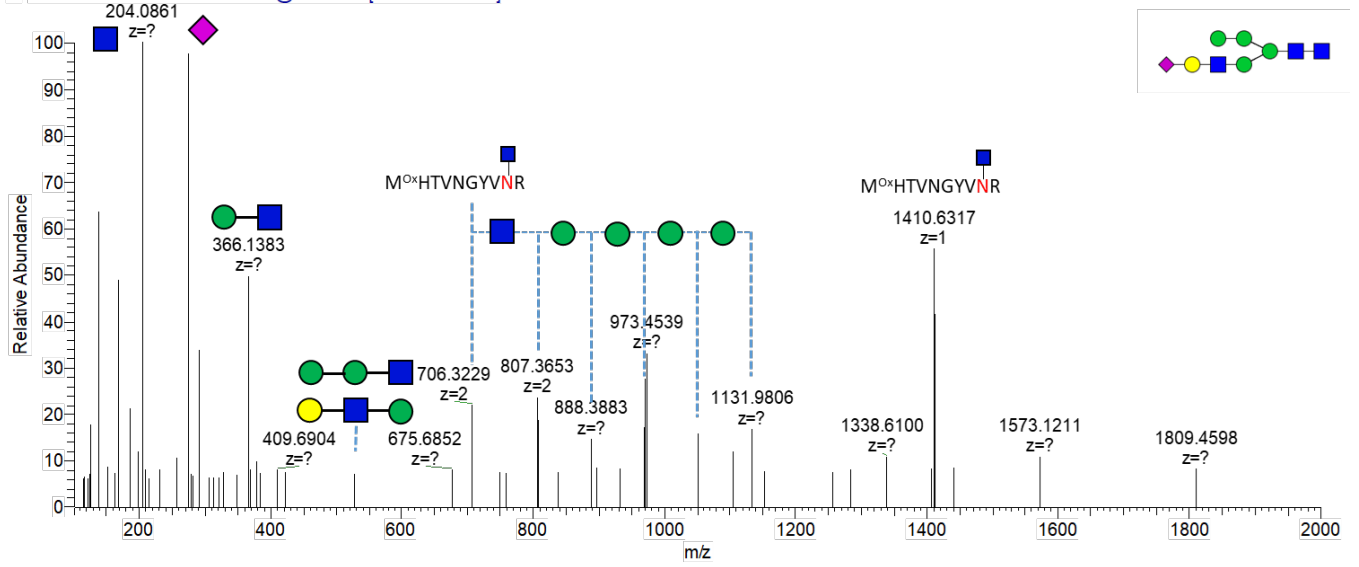
# 10-N

F8\_HILIC\_JQ#1638 RT: 8.63 AV: 1 NL: 4.98E4  
 T: FTMS + c NSI d Full ms2 925.05@hcd27.00 [100.00-2000.00]



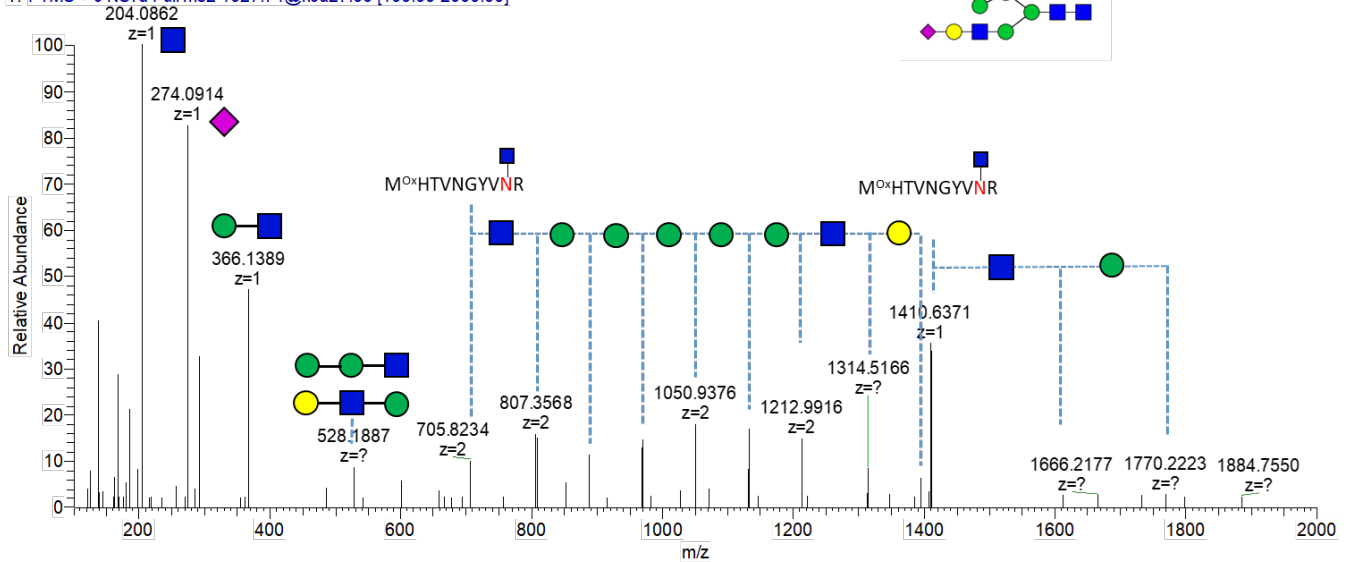
# 11-N

F8\_HILIC\_JQ#2118 RT: 10.11 AV: 1 NL: 1.76E4  
 T: FTMS + c NSI d Full ms2 973.72@hcd27.00 [100.00-2000.00]



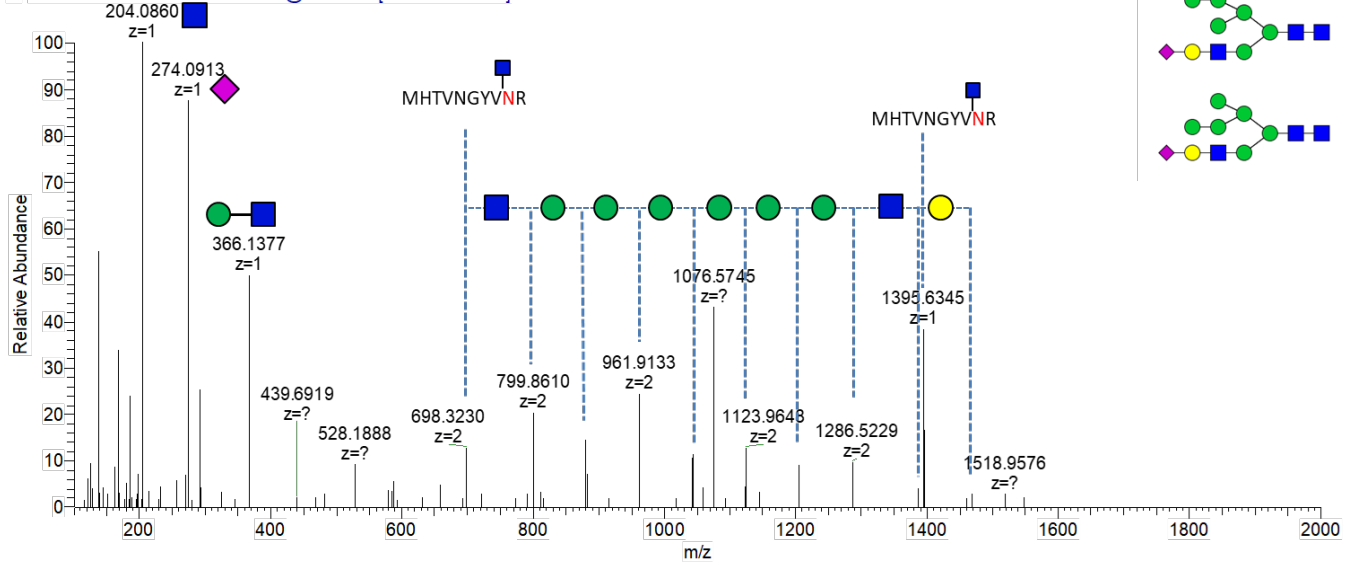
# 12-N

F8\_HILIC\_JQ#2099 RT: 10.05 AV: 1 NL: 2.93E4  
 T: FTMS + c NSI d Full ms2 1027.74@hcd27.00 [100.00-2000.00]



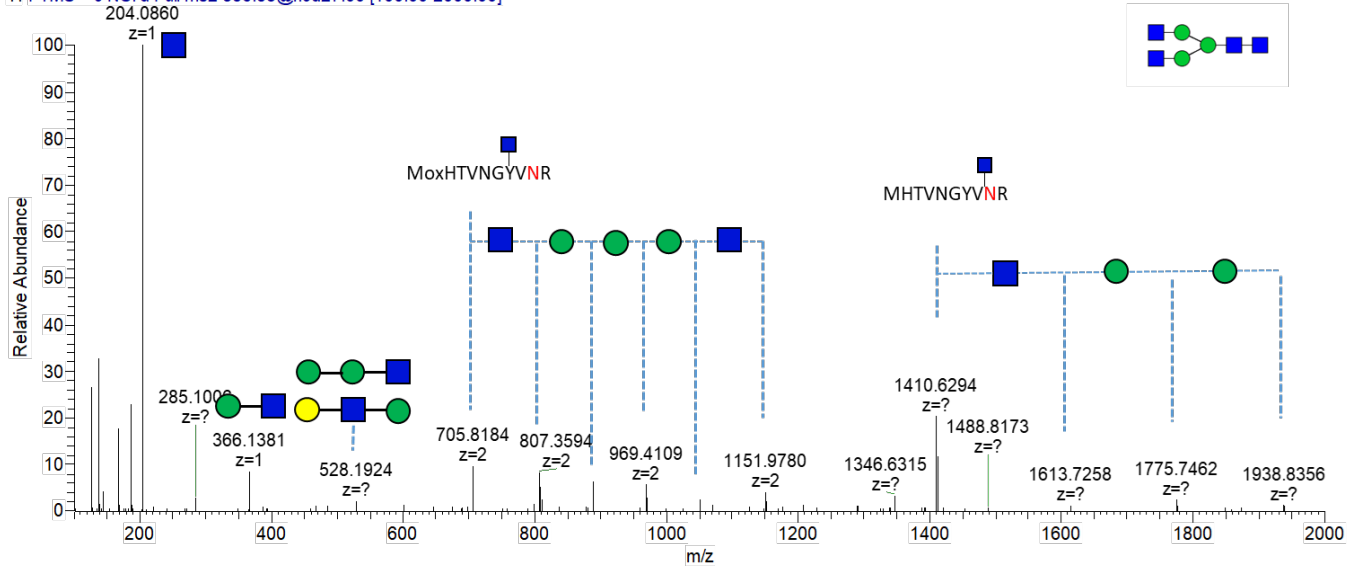
# 13-N

F8\_HILIC\_JQ#2462 RT: 11.19 AV: 1 NL: 3.98E4  
 T: FTMS + c NSI d Full ms2 1076.75@hcd27.00 [100.00-2000.00]



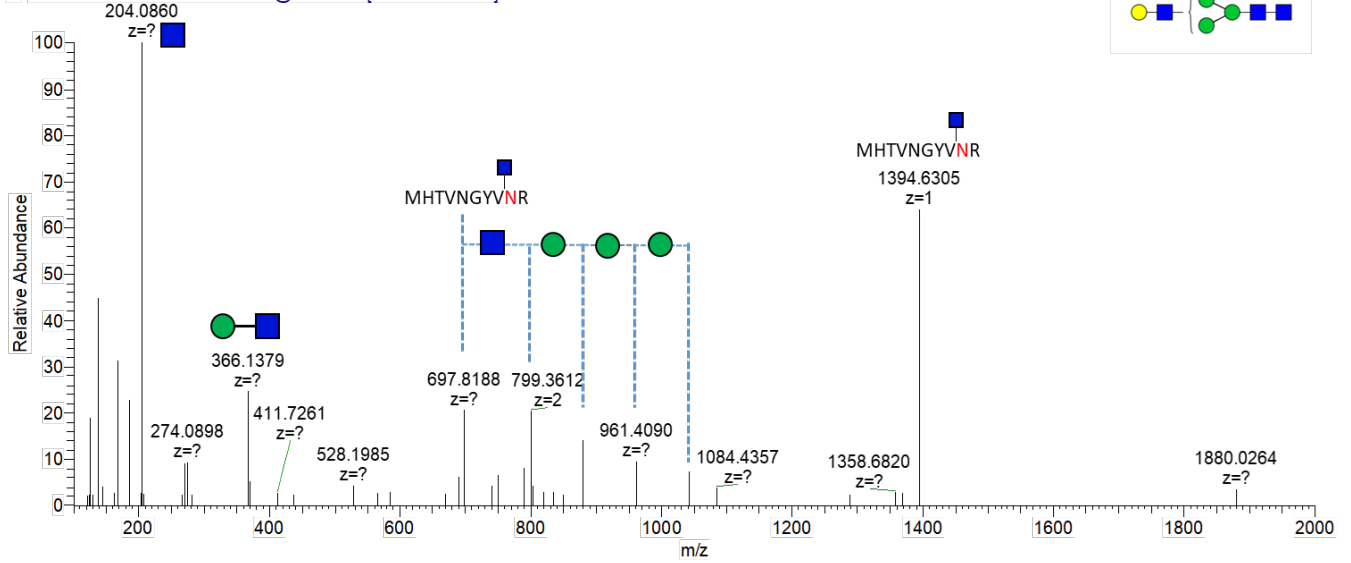
# 14-N

F8\_HILIC\_JQ#1651 RT: 8.66 AV: 1 NL: 1.69E5  
 T: FTMS + c NSI d Full ms2 836.35@hcd27.00 [100.00-2000.00]



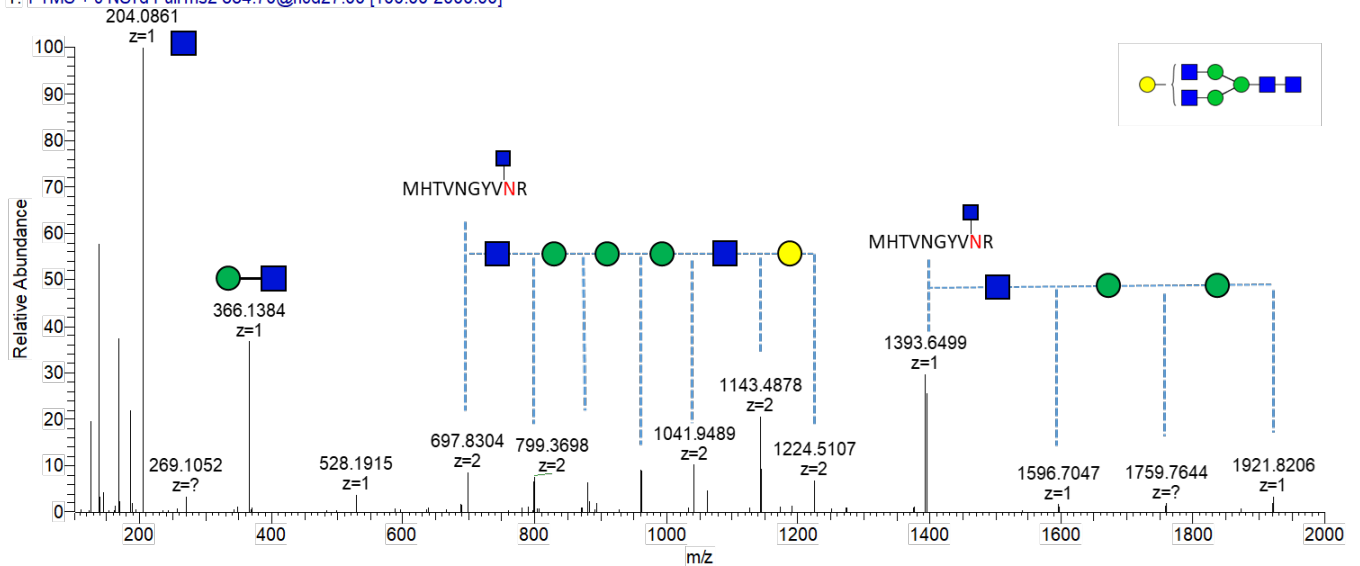
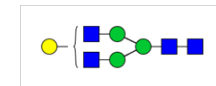
# 15-N

F8\_HILIC\_JQ#2009 RT: 9.78 AV: 1 NL: 1.38E5  
 T: FTMS + c NSI d Full ms2 817.34@hcd27.00 [100.00-2000.00]



# 16-N

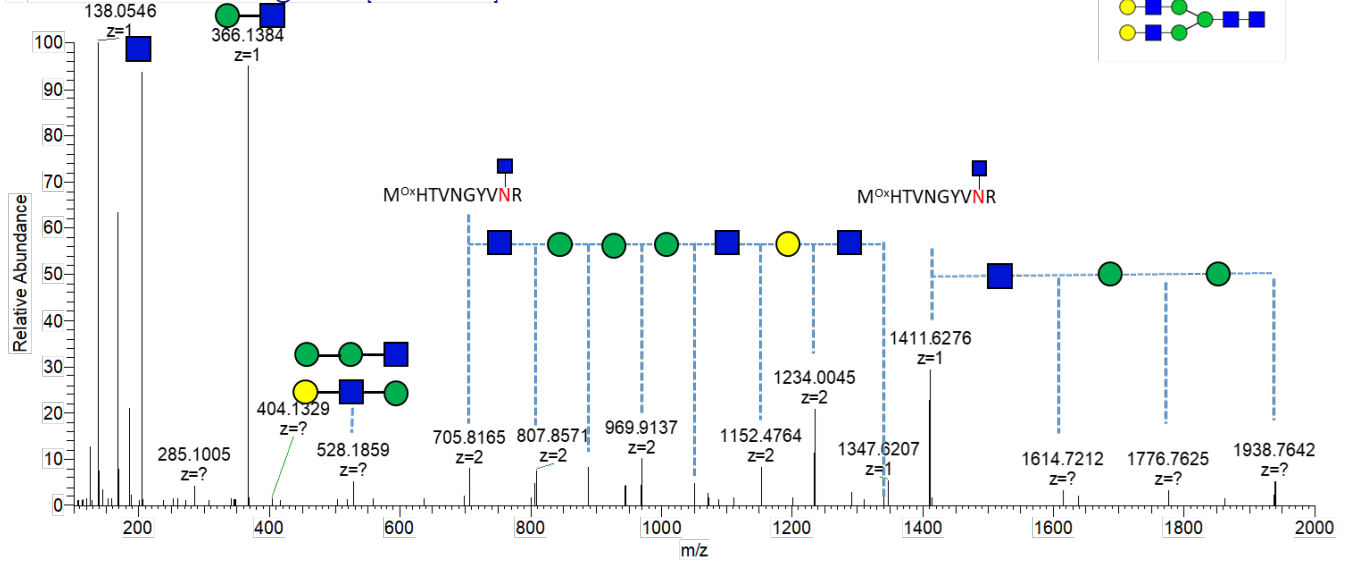
F8\_HILIC\_JQ#1731 RT: 8.91 AV: 1 NL: 2.47E5  
 T: FTMS + c NSI d Full ms2 884.70@hcd27.00 [100.00-2000.00]





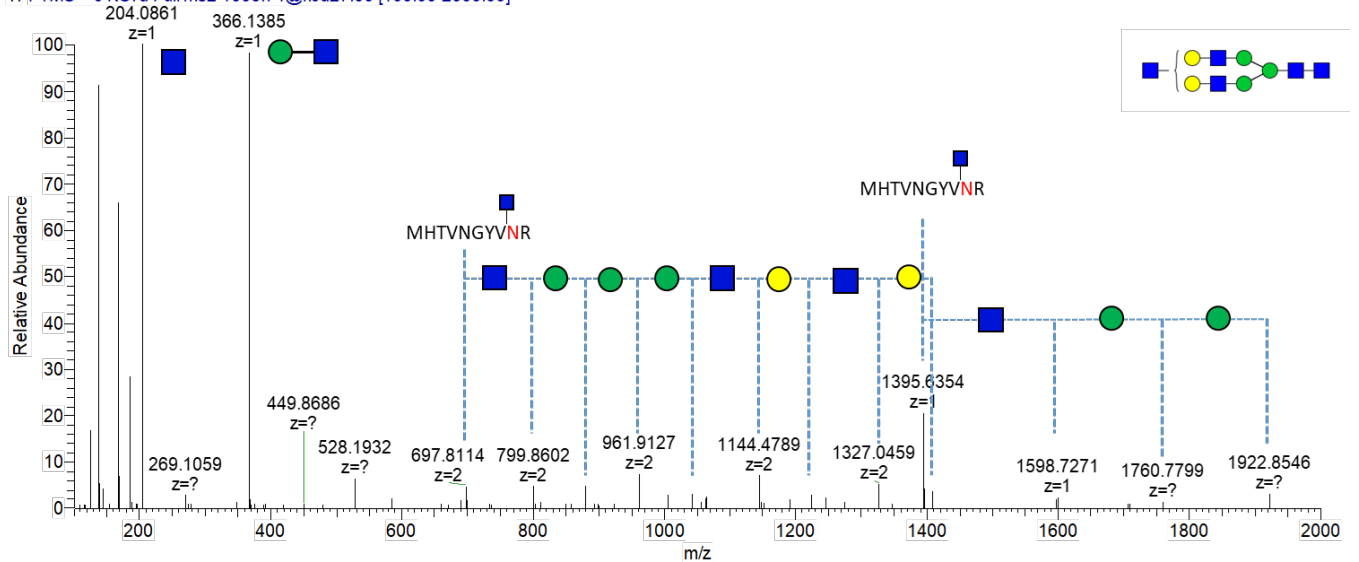
# 17-N

F8\_HILIC\_JQ#1629 RT: 8.60 AV: 1 NL: 2.37E4  
 T: FTMS + c NSI d Full ms2 944.38@hcd27.00 [100.00-2000.00]



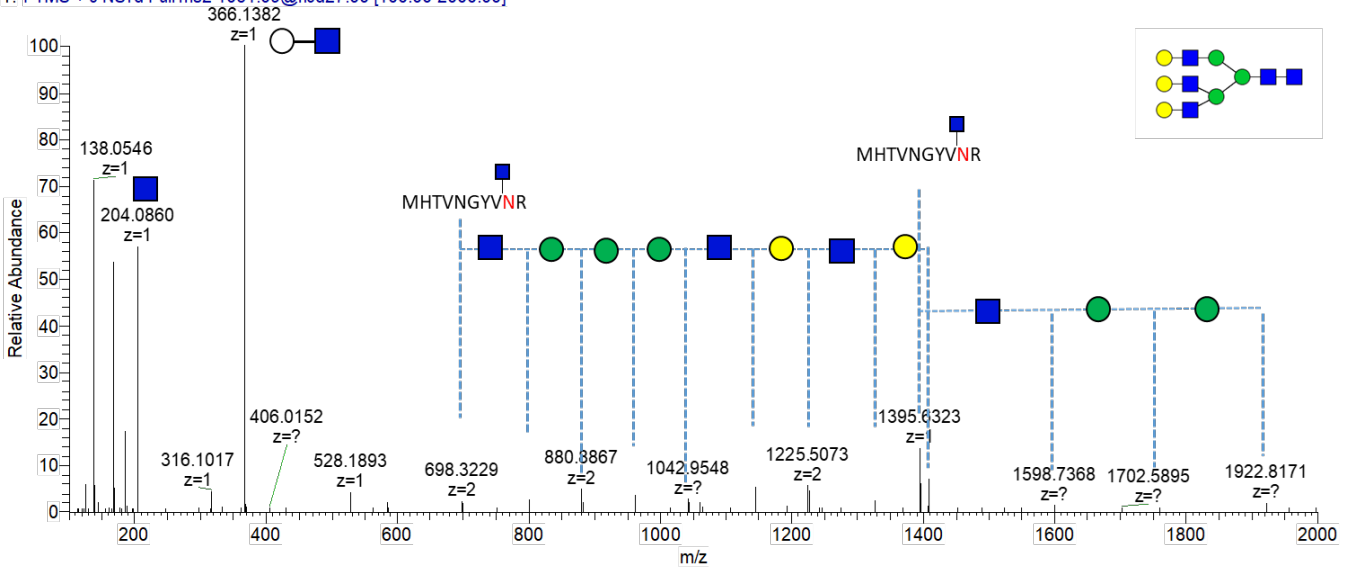
# 18-N

F8\_HILIC\_JQ#2043 RT: 9.88 AV: 1 NL: 6.80E4  
 T: FTMS + c NSI d Full ms2 1006.74@hcd27.00 [100.00-2000.00]



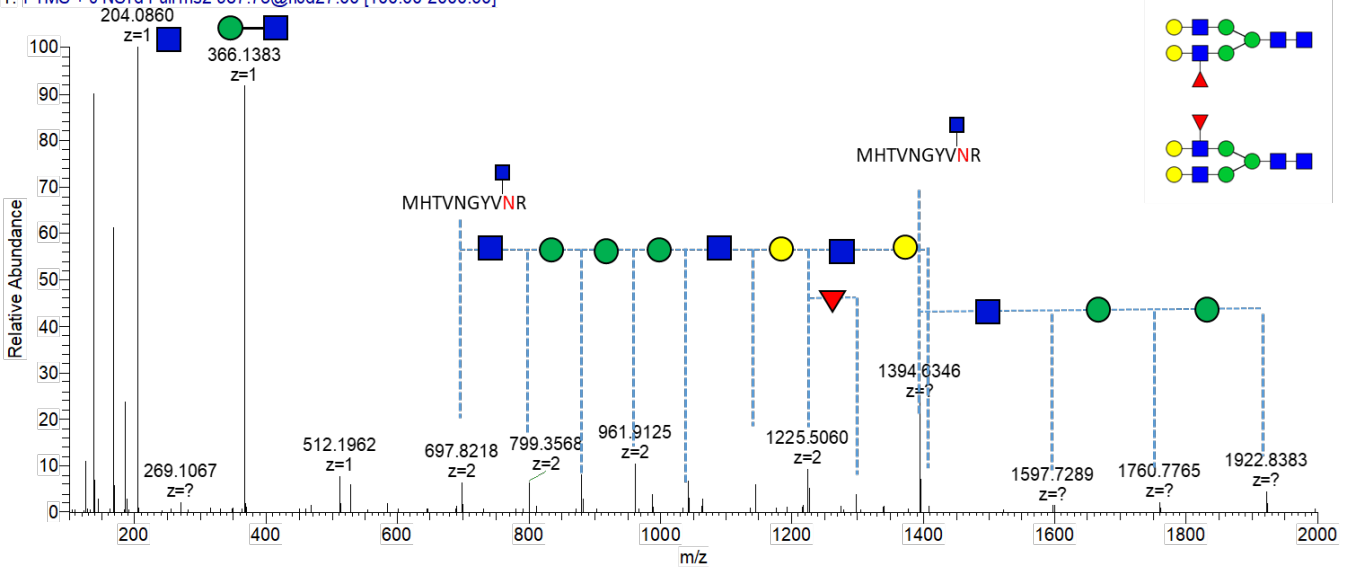
# 19-N

F8\_HILIC\_JQ#1923 RT: 9.50 AV: 1 NL: 4.90E4  
 T: FTMS + c NSI d Full ms2 1061.09@hcd27.00 [100.00-2000.00]



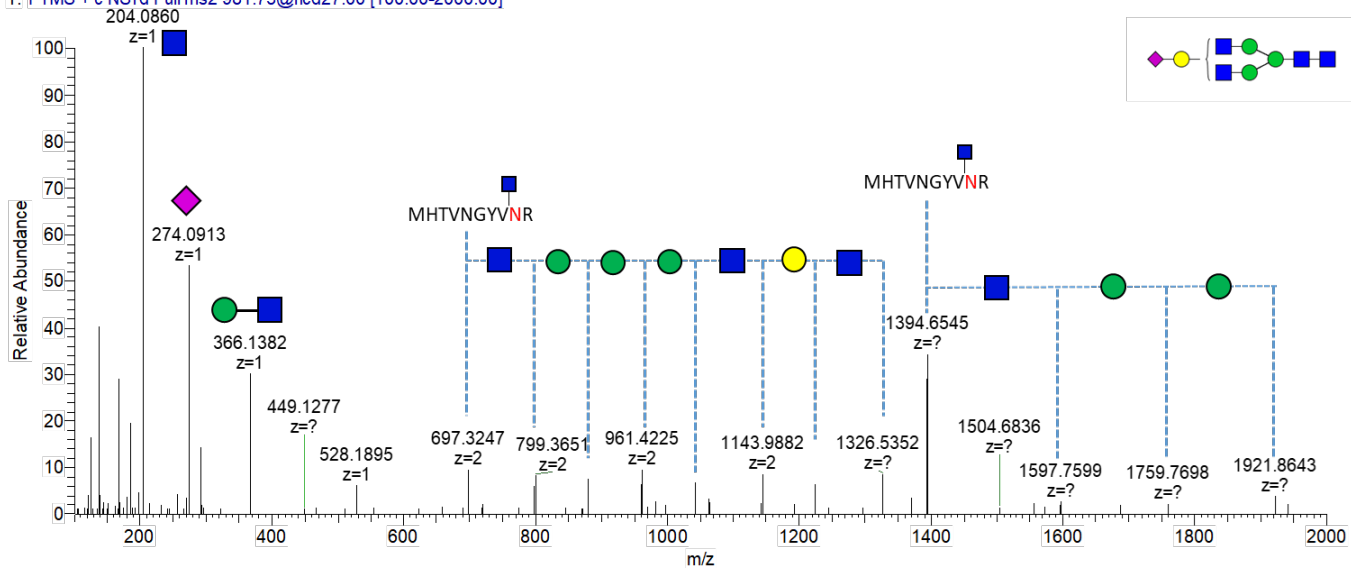
# 20-N

F8\_HILIC\_JQ#1949 RT: 9.60 AV: 1 NL: 6.82E4  
 T: FTMS + c NSI d Full ms2 987.73@hcd27.00 [100.00-2000.00]



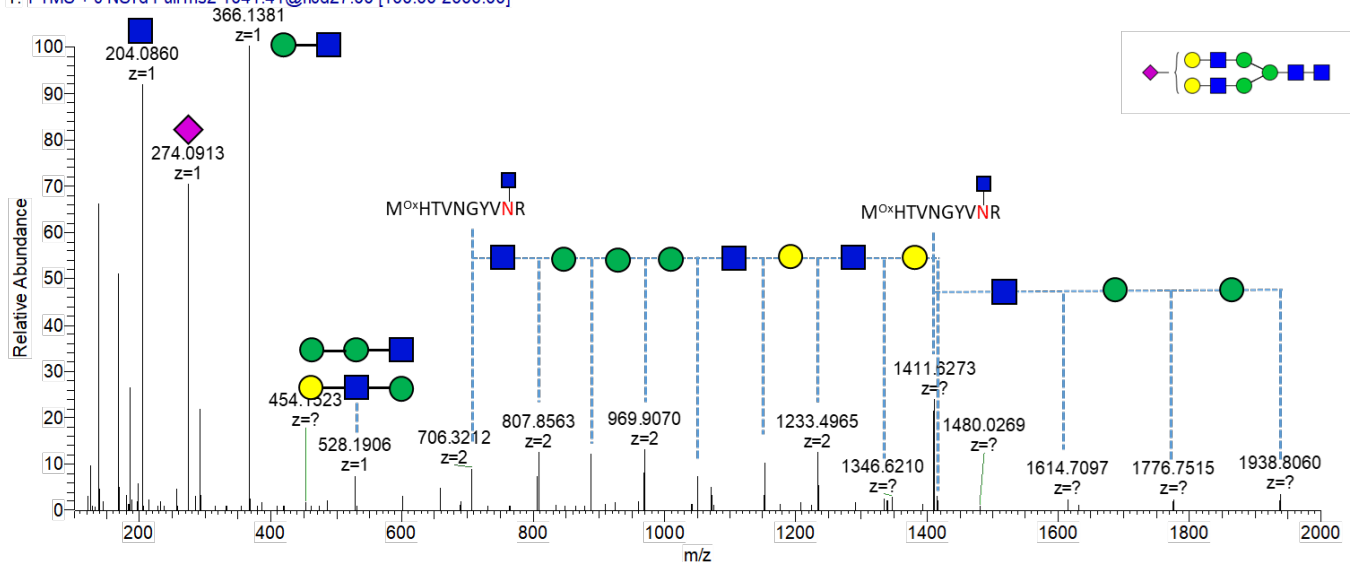
# 21-N

F8\_HILIC\_JQ#2284 RT: 10.61 AV: 1 NL: 2.99E4  
 T: FTMS + c NSI d Full ms2 981.73@hcd27.00 [100.00-2000.00]



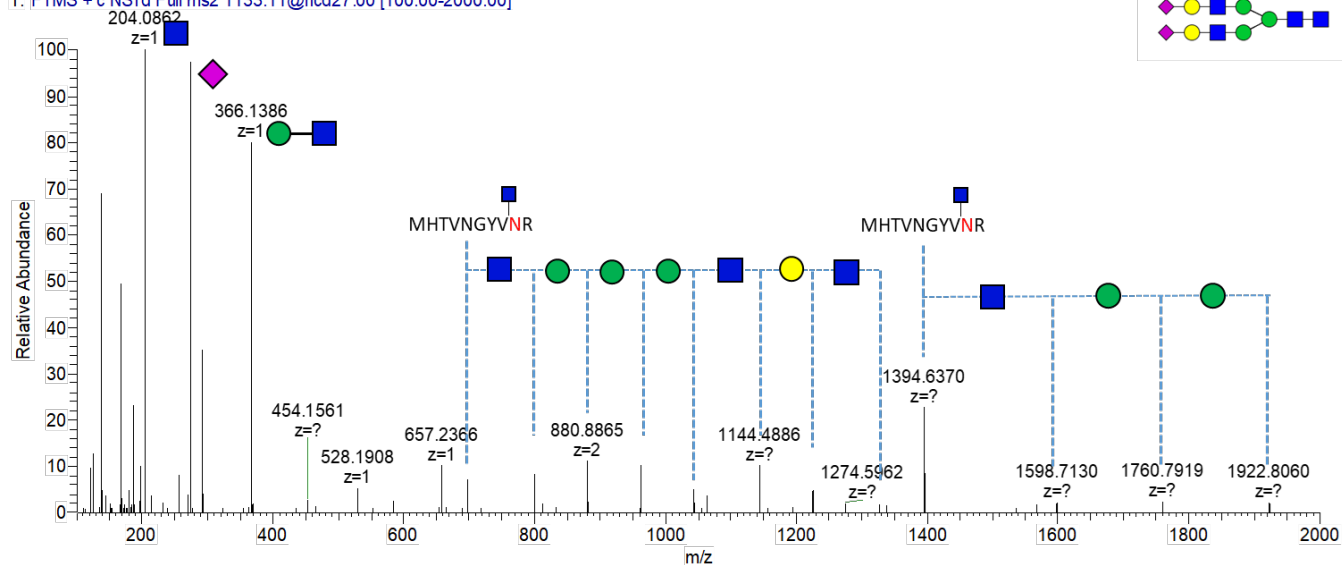
# 22-N

F8\_HILIC\_JQ#2128 RT: 10.14 AV: 1 NL: 8.95E4  
 T: FTMS + c NSI d Full ms2 1041.41@hcd27.00 [100.00-2000.00]



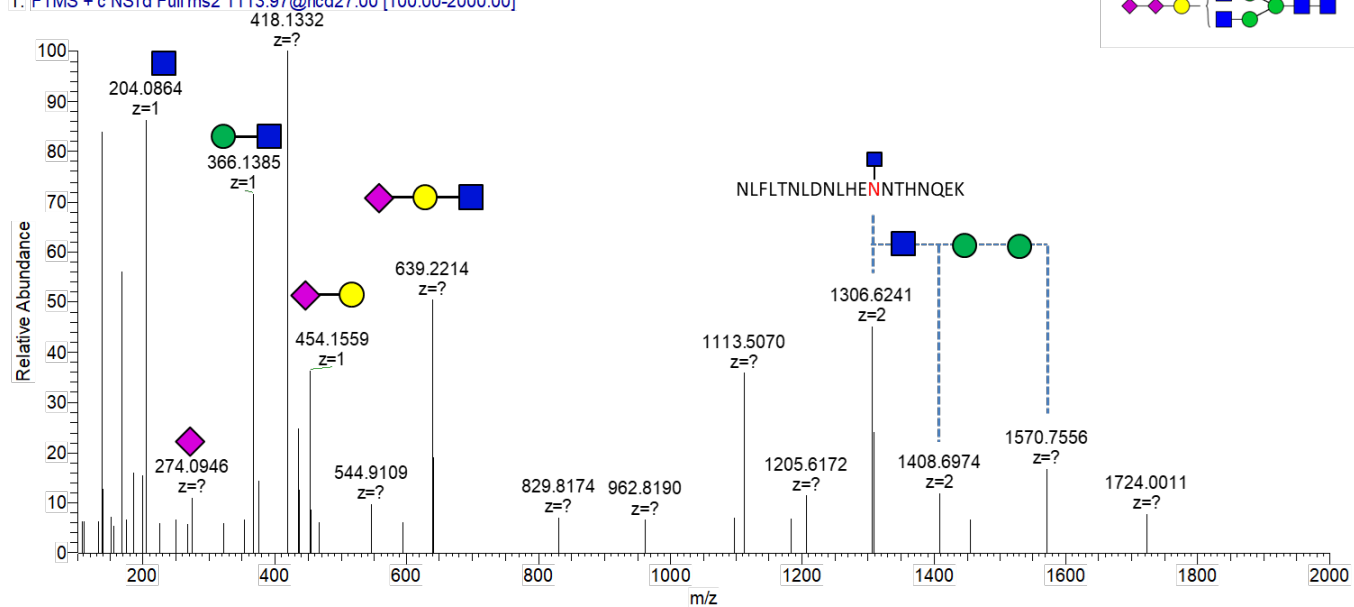
# 23-N

F8\_HILIC\_JQ#3209 RT: 13.29 AV: 1 NL: 5.08E4  
 T: FTMS + c NSI d Full ms2 1133.11@hcd27.00 [100.00-2000.00]



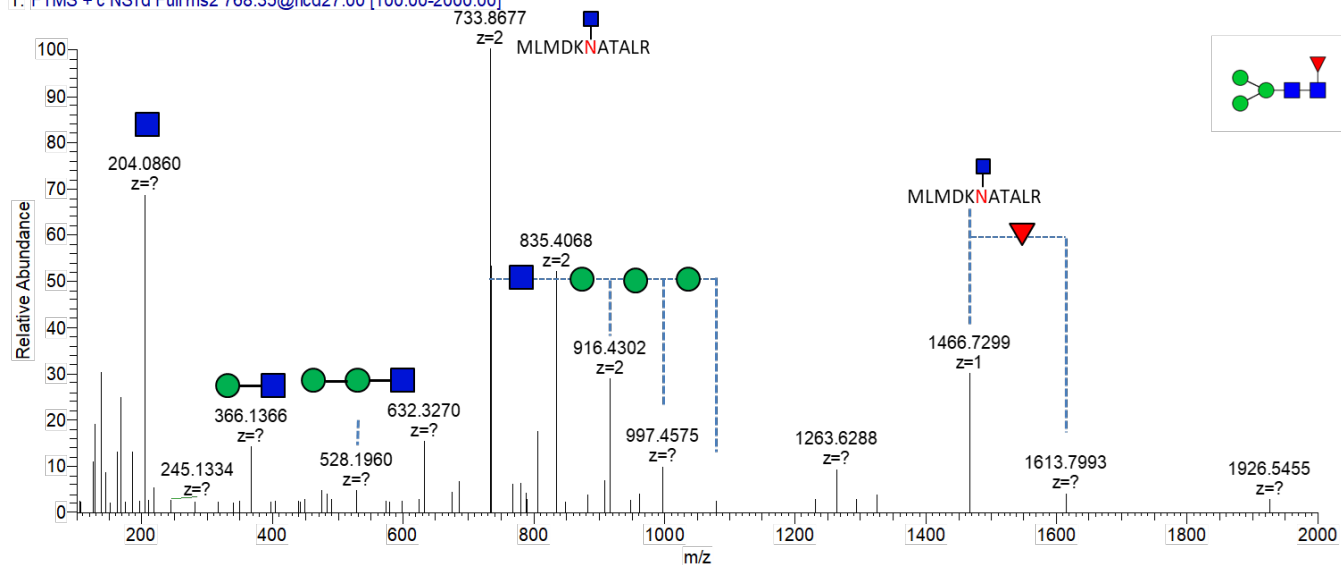
# 24-N

F8\_HILIC\_JQ#4094 RT: 15.83 AV: 1 NL: 9.50E3  
 T: FTMS + c NSI d Full ms2 1113.97@hcd27.00 [100.00-2000.00]



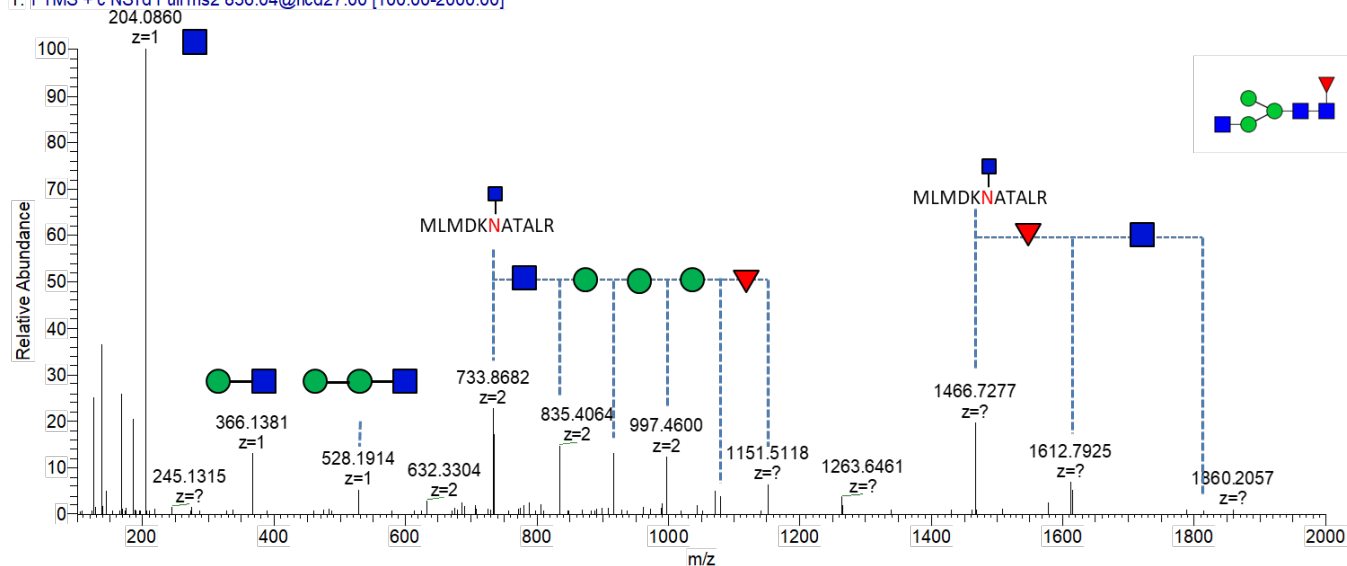
# 25-N

F8\_HILIC\_JQ#2780 RT: 12.08 AV: 1 NL: 3.82E4  
 T: FTMS + c NSI d Full ms2 768.35@hcd27.00 [100.00-2000.00]



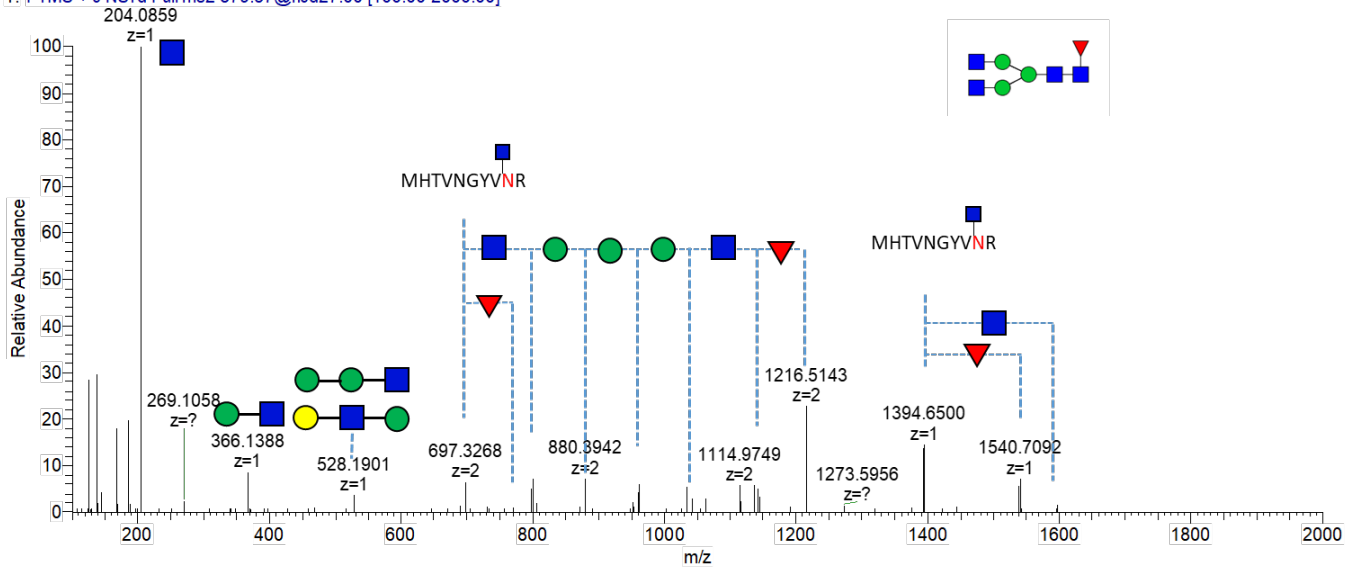
# 26-N

F8\_HILIC\_JQ#2756 RT: 12.01 AV: 1 NL: 2.61E5  
 T: FTMS + c NSI d Full ms2 836.04@hcd27.00 [100.00-2000.00]



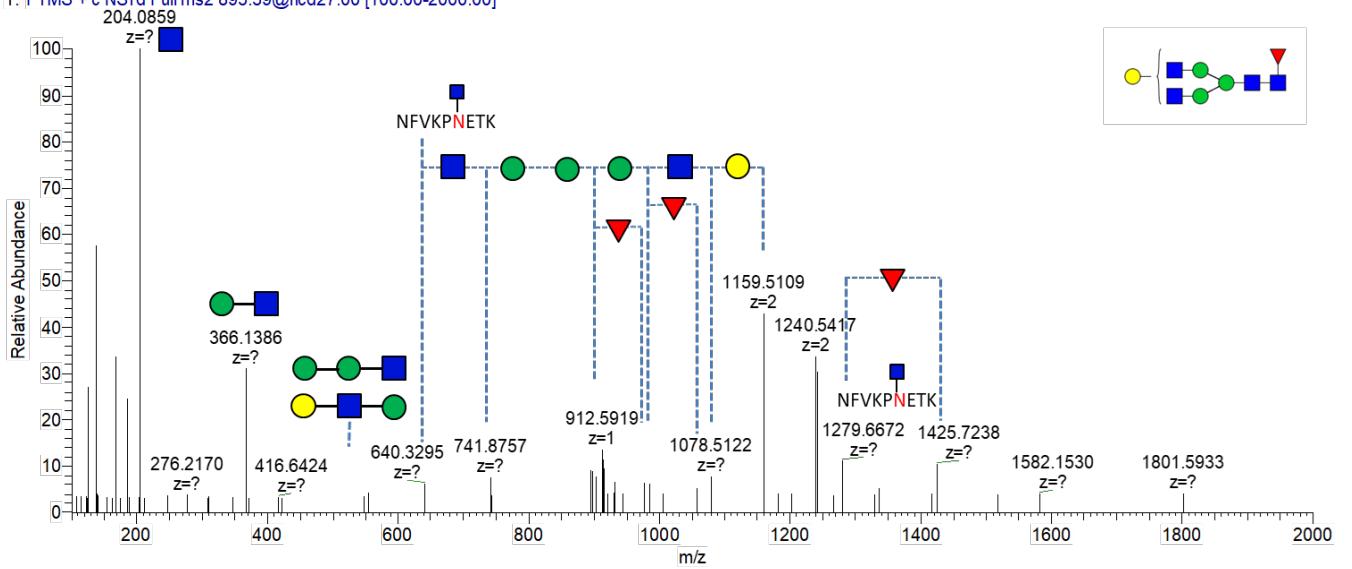
# 27-N

F8\_HILIC\_JQ#1778 RT: 9.05 AV: 1 NL: 1.14E5  
 T: FTMS + c NSI d Full ms2 879.37@hcd27.00 [100.00-2000.00]



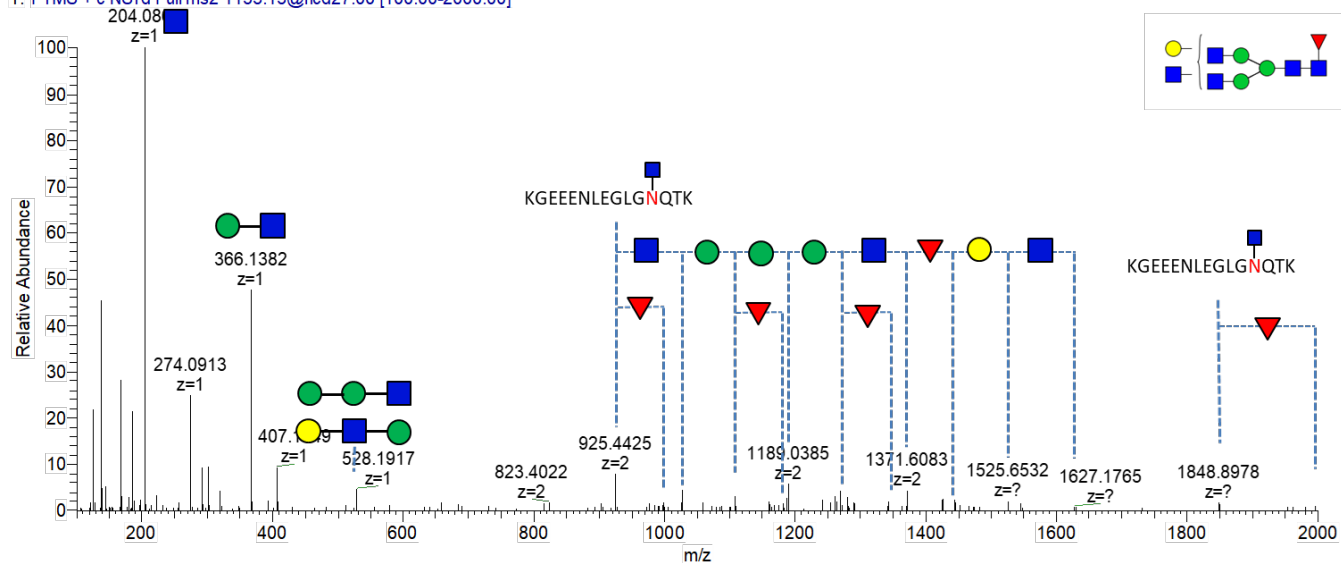
# 28-N

F8\_HILIC\_JQ#1287 RT: 7.26 AV: 1 NL: 3.56E3  
 T: FTMS + c NSI d Full ms2 895.39@hcd27.00 [100.00-2000.00]



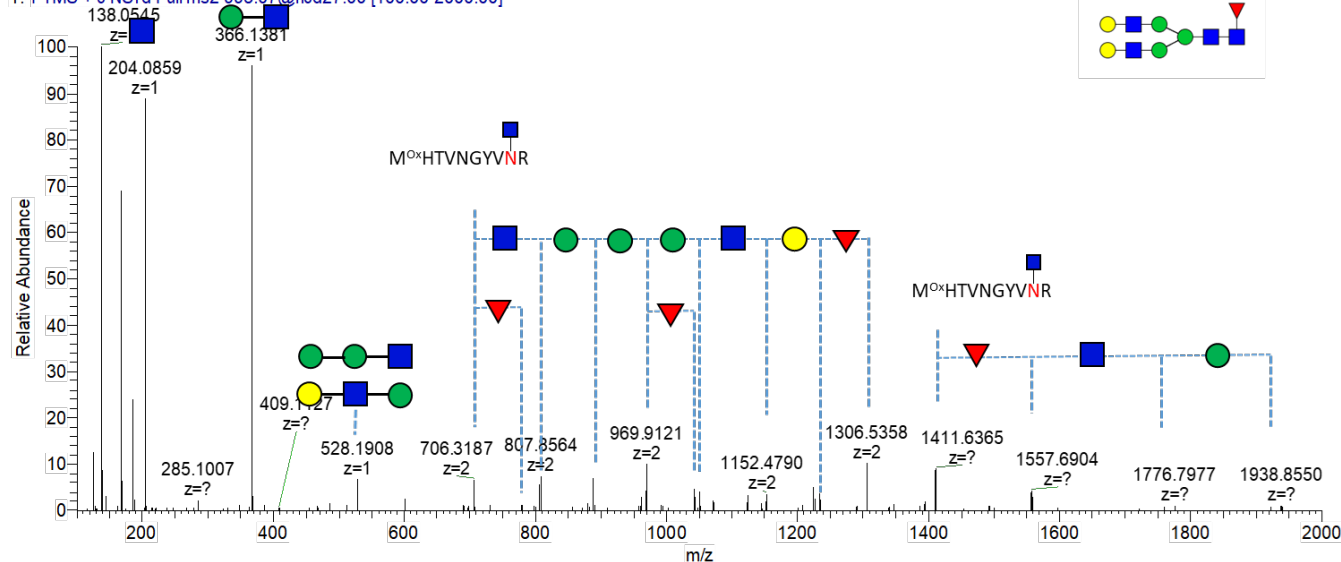
# 29-N

F8\_HILIC\_JQ#2479 RT: 11.24 AV: 1 NL: 8.87E5  
 T: FTMS + c NSI d Full ms2 1153.13@hcd27.00 [100.00-2000.00]



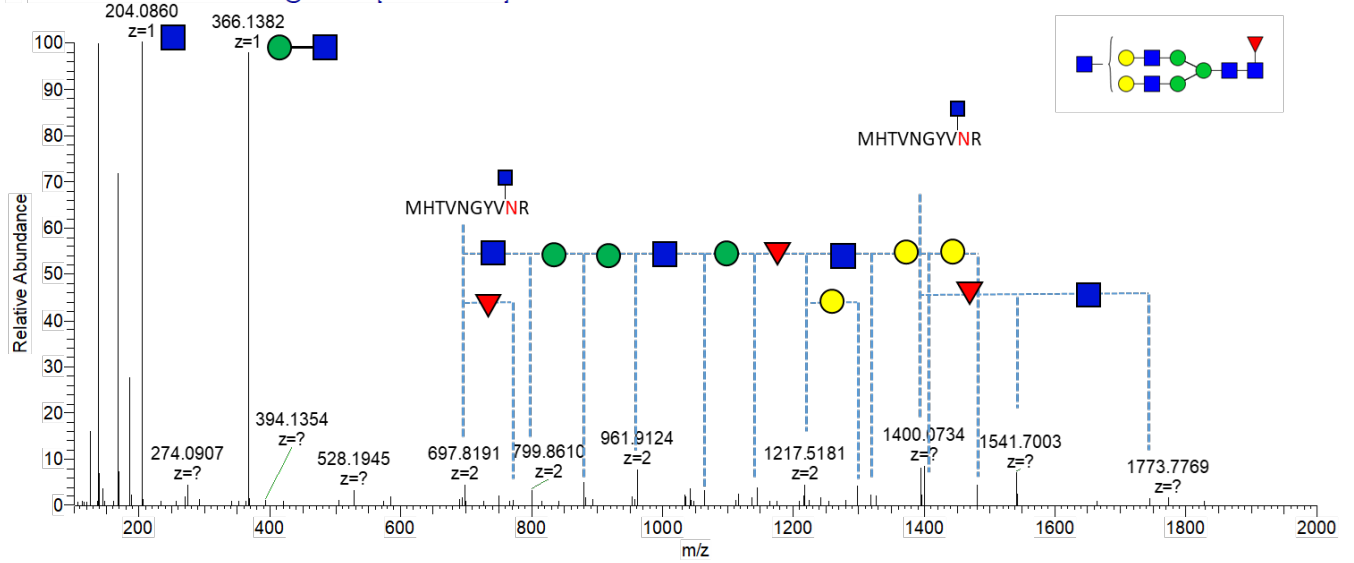
# 30-N

F8\_HILIC\_JQ#1663 RT: 8.70 AV: 1 NL: 1.36E5  
 T: FTMS + c NSI d Full ms2 993.07@hcd27.00 [100.00-2000.00]



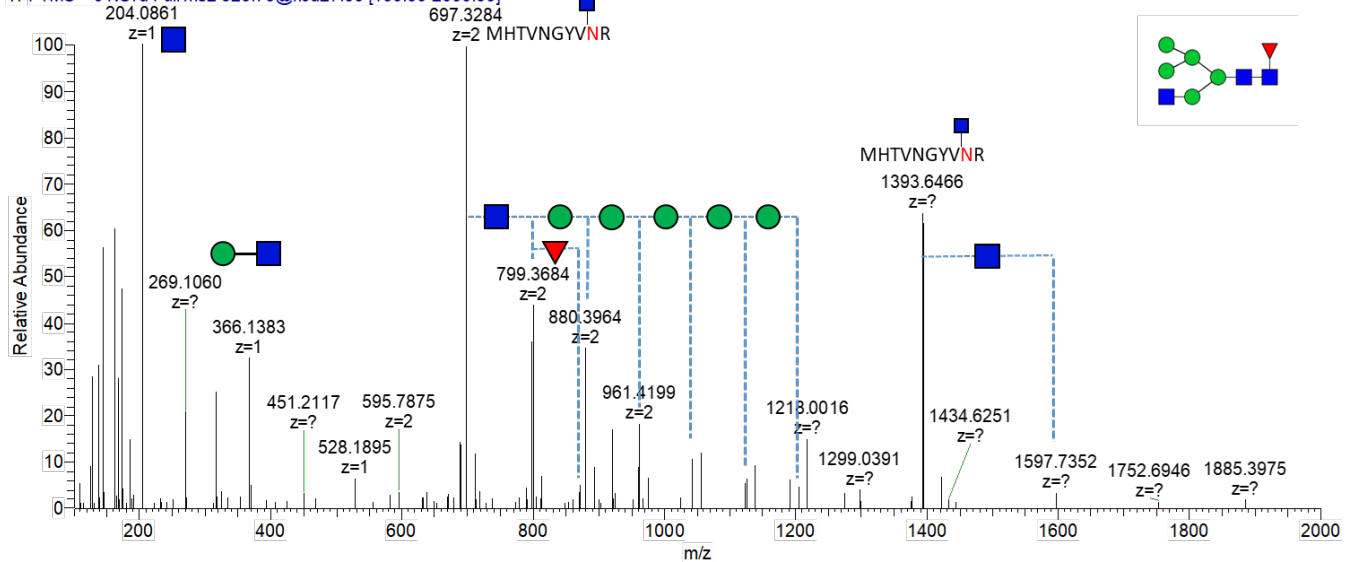
# 31-N

F8\_HILIC\_JQ#1997 RT: 9.74 AV: 1 NL: 1.19E5  
 T: FTMS + c NSI d Full ms2 1055.43@hcd27.00 [100.00-2000.00]



# 32-N

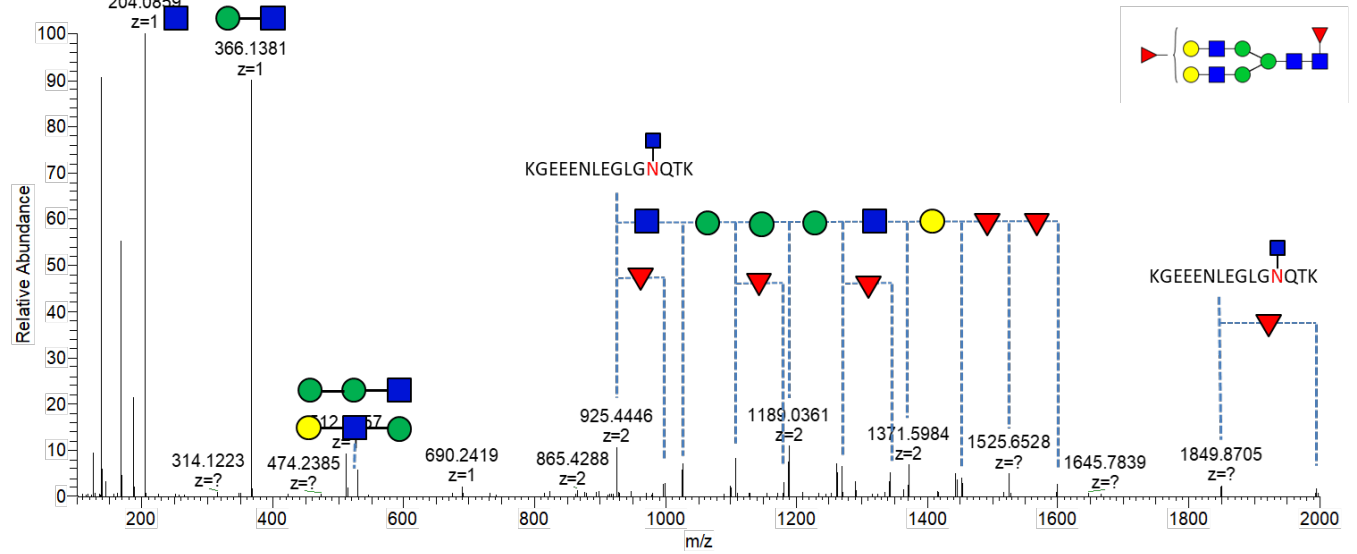
F8\_HILIC\_JQ#1660 RT: 8.69 AV: 1 NL: 5.62E4  
 T: FTMS + c NSI d Full ms2 920.70@hcd27.00 [100.00-2000.00]





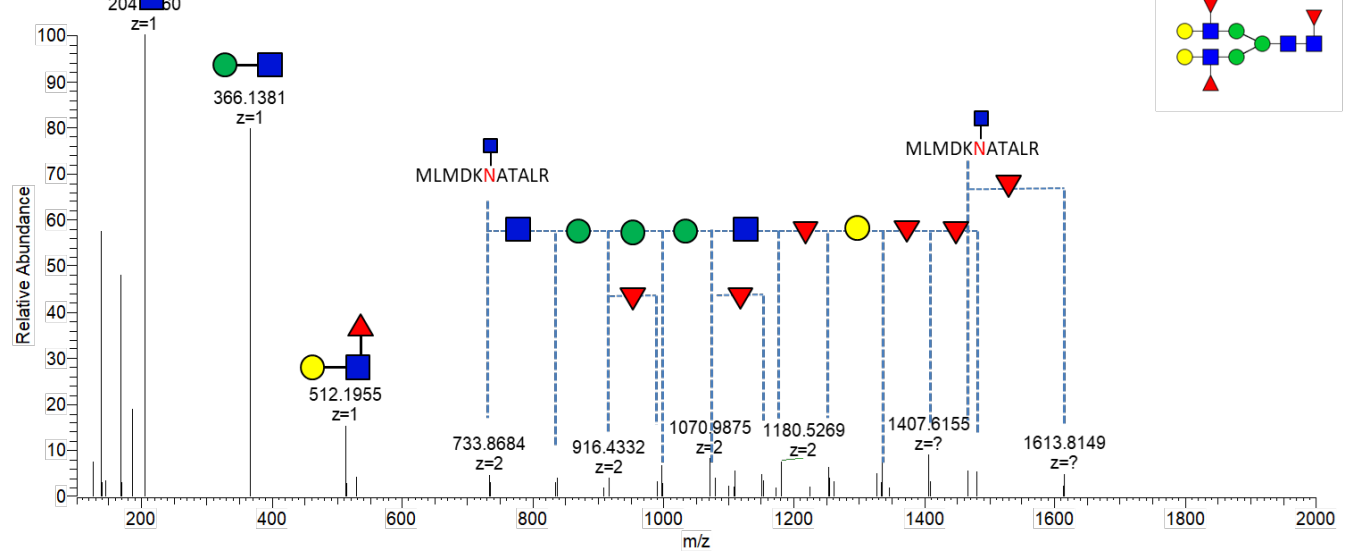
# 33-N

F8\_HILIC\_JQ#2416 RT: 11.05 AV: 1 NL: 3.23E5  
 T: FTMS + c NSI d Full ms2 1187.84@hcd27.00 [100.00-2000.00]



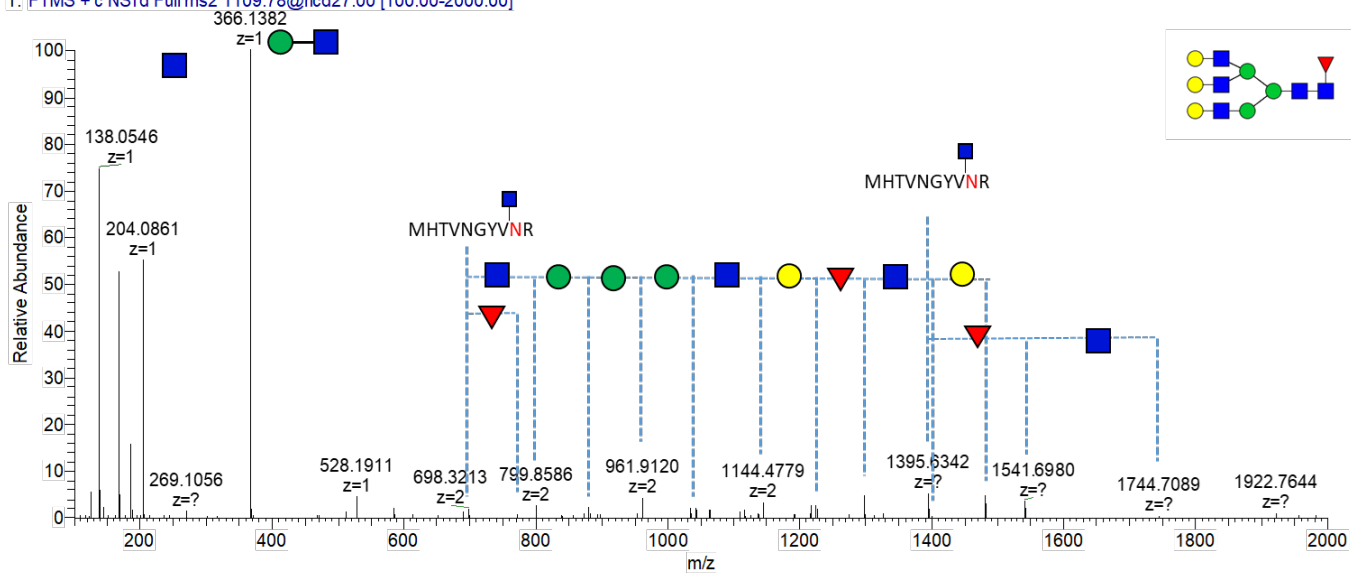
# 34-N

F8\_HILIC\_JQ#2585 RT: 11.54 AV: 1 NL: 1.13E5  
 T: FTMS + c NSI d Full ms2 1109.14@hcd27.00 [100.00-2000.00]



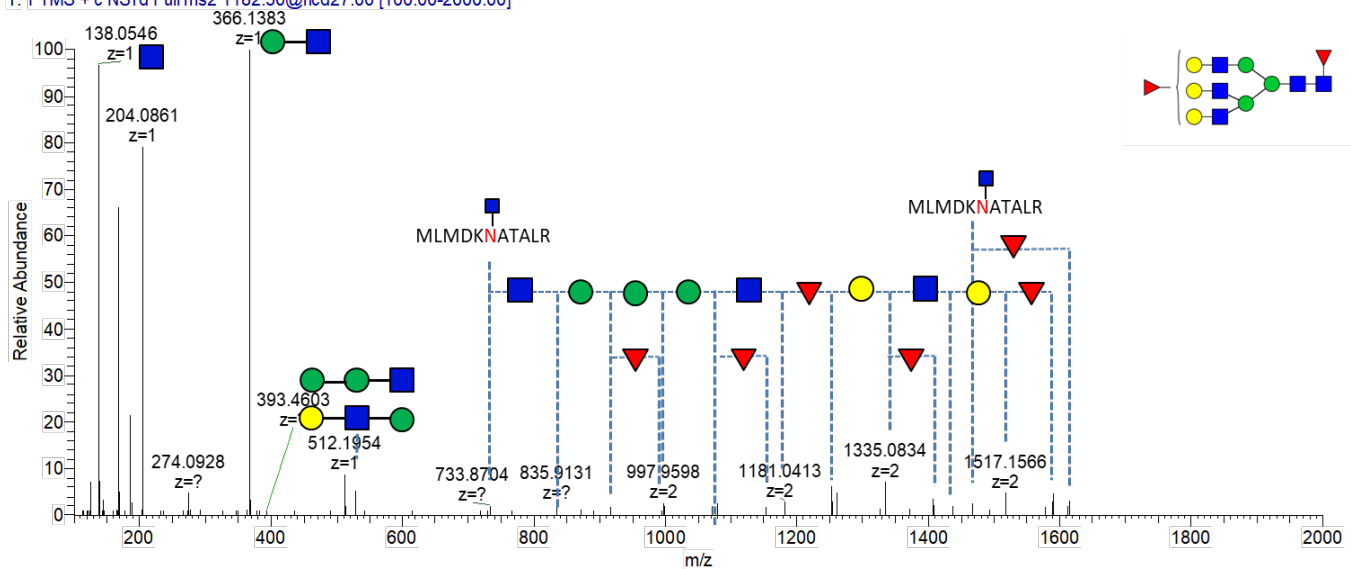
# 35-N

F8\_HILIC\_JQ#1955 RT: 9.62 AV: 1 NL: 1.92E5  
 T: FTMS + c NSId Full ms2 1109.78@hcd27.00 [100.00-2000.00]



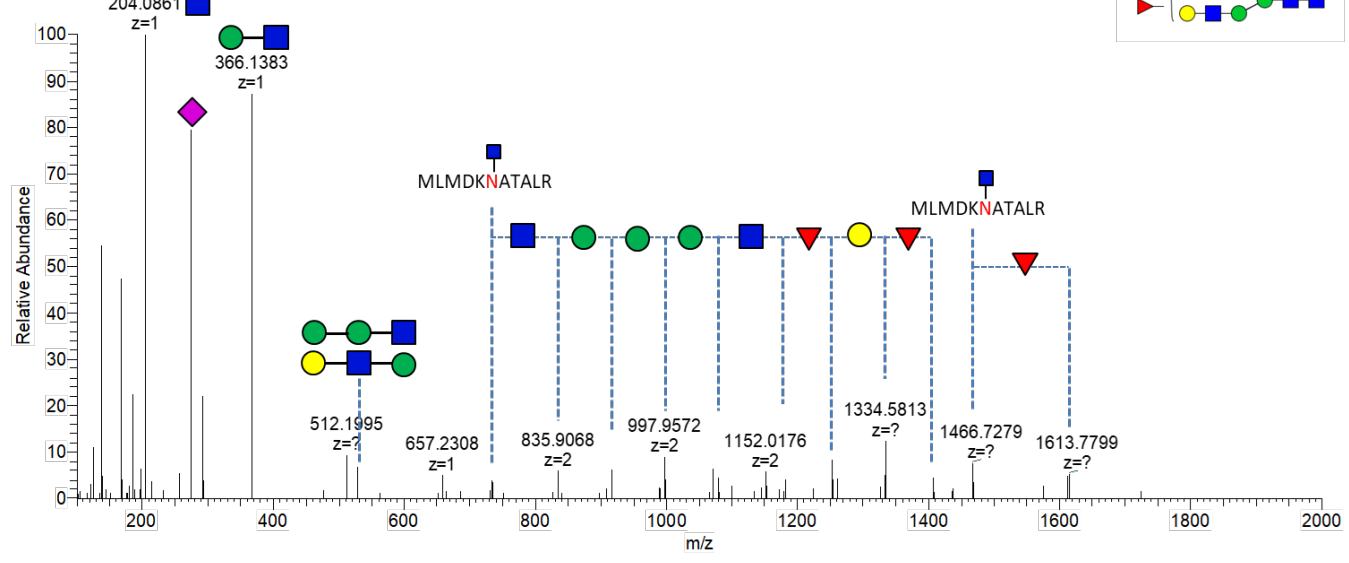
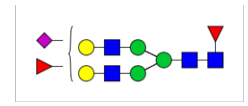
# 36-N

F8\_HILIC\_JQ#2570 RT: 11.50 AV: 1 NL: 1.11E5  
 T: FTMS + c NSId Full ms2 1182.50@hcd27.00 [100.00-2000.00]



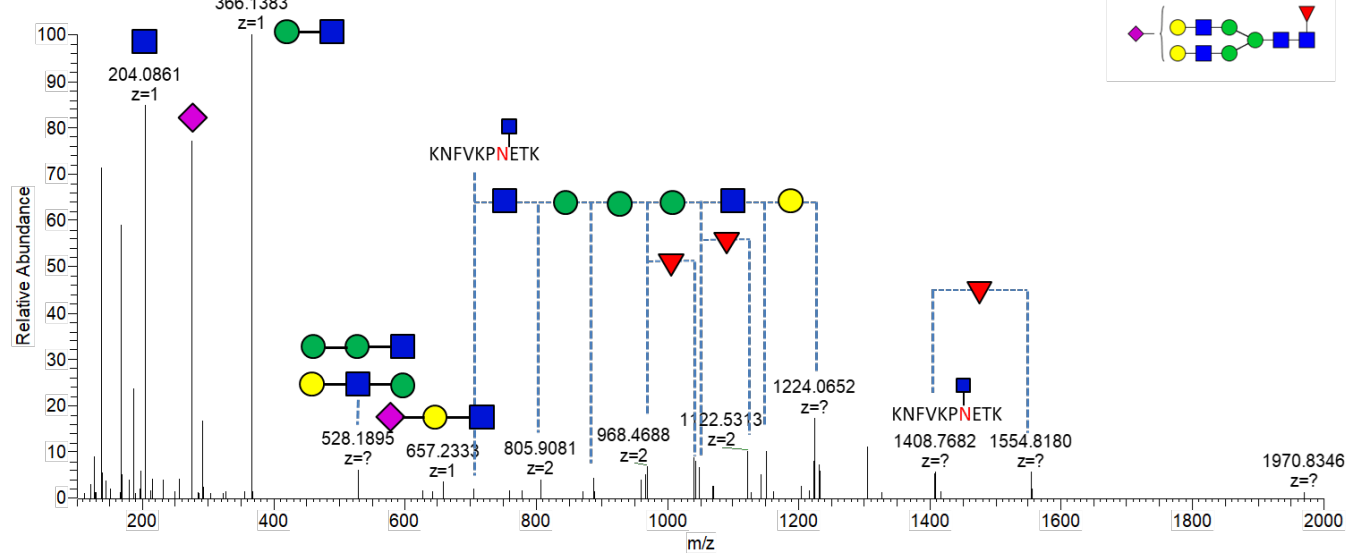
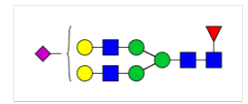
# 37-N

F8\_HILIC\_JQ #3249 RT: 13.41 | AV: 1 | NL: 3.12E5  
 T: FTMS + c NSI d Full ms2 1157.49@hcd27.00 [100.00-2000.00]



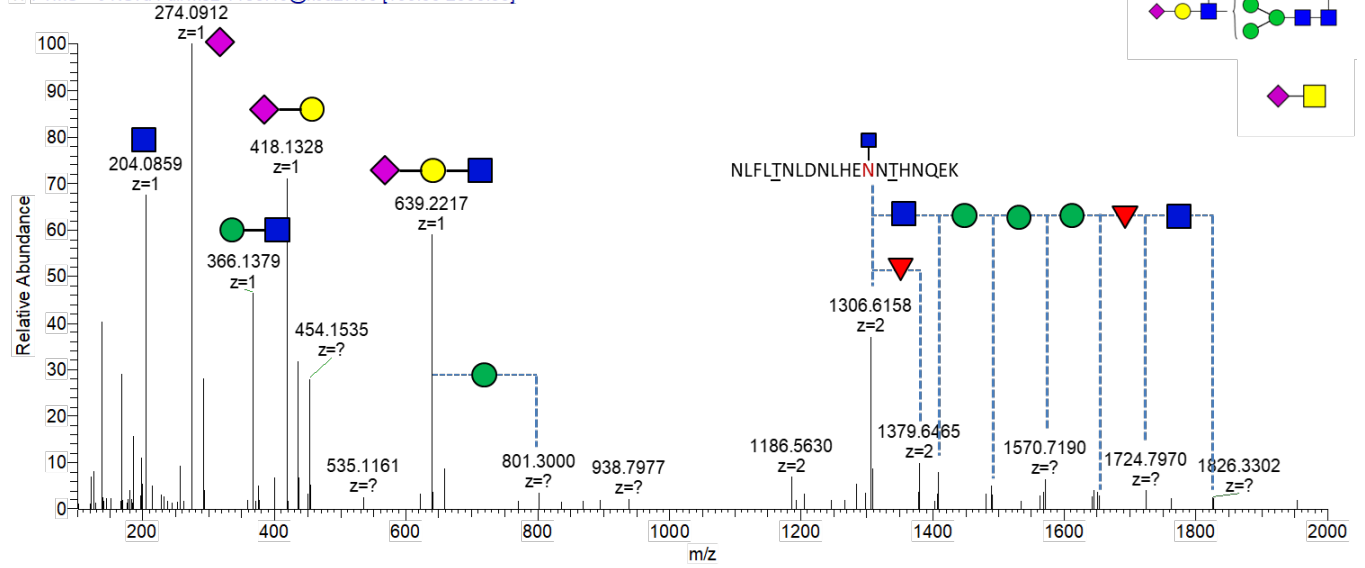
# 38-N

F8\_HILIC\_JQ #1161 RT: 6.61 | AV: 1 | NL: 9.39E3  
 T: FTMS + c NSI d Full ms2 1089.47@hcd27.00 [100.00-2000.00]



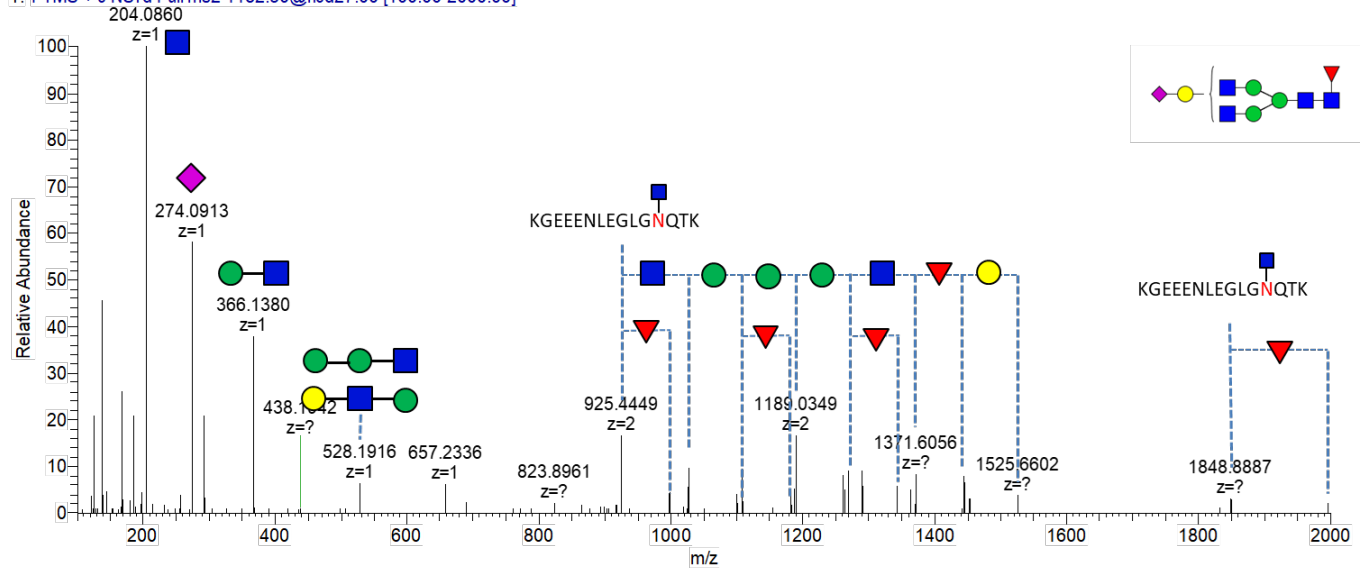
# 39-N

F8\_HILIC\_JQ #4688 RT: 17.63 AV: 1 NL: 2.42E4  
 T: FTMS + c NSI d Full ms2 1186.49@hcd27.00 [100.00-2000.00]



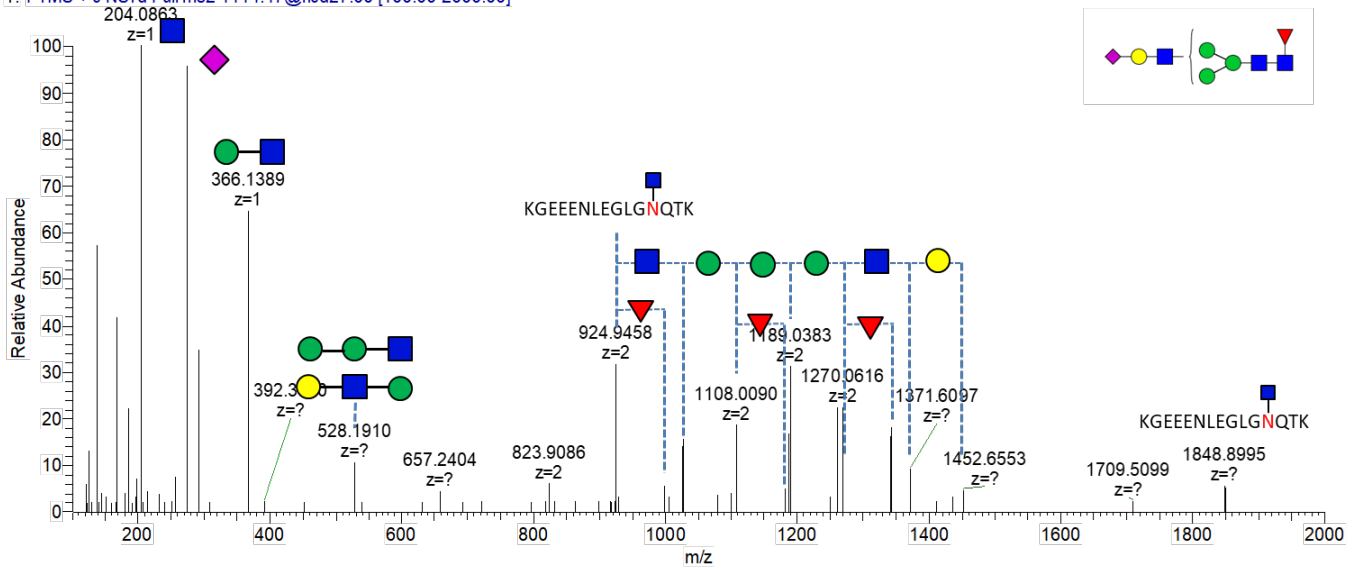
# 40-N

F8\_HILIC\_JQ #3076 RT: 12.91 AV: 1 NL: 8.87E4  
 T: FTMS + c NSI d Full ms2 1182.50@hcd27.00 [100.00-2000.00]



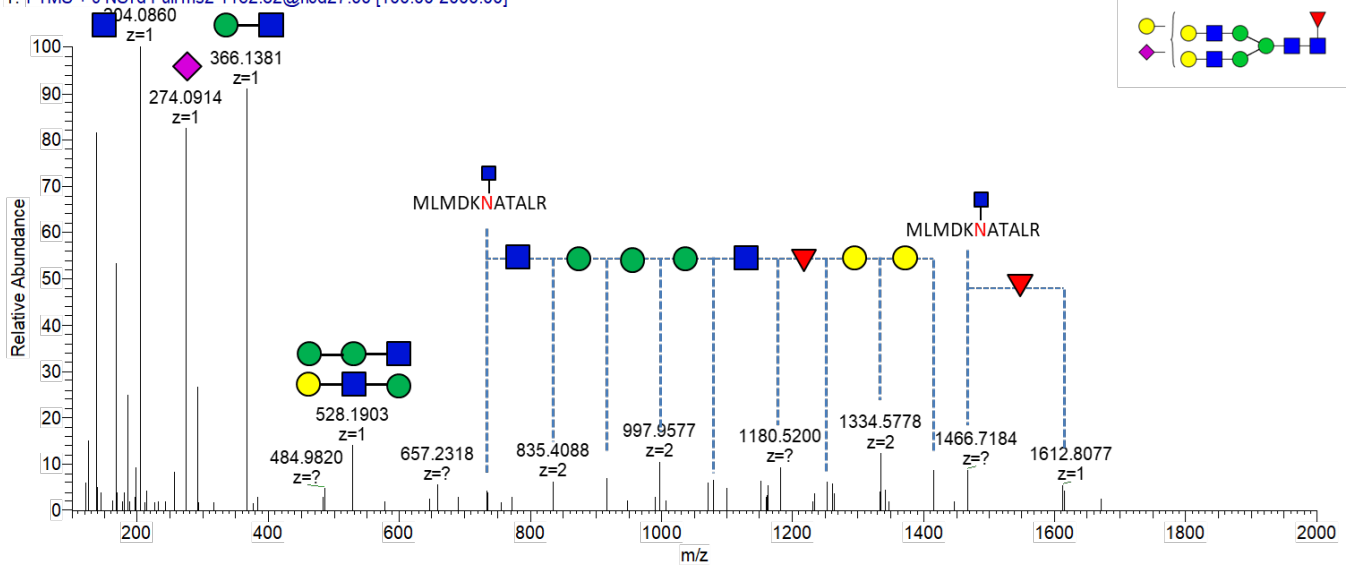
# 41-N

F8\_HILIC\_JQ#3125 RT: 13.05 AV: 1 NL: 3.34E4  
 T: FTMS + c NSI d Full ms2 1114.47@hcd27.00 [100.00-2000.00]



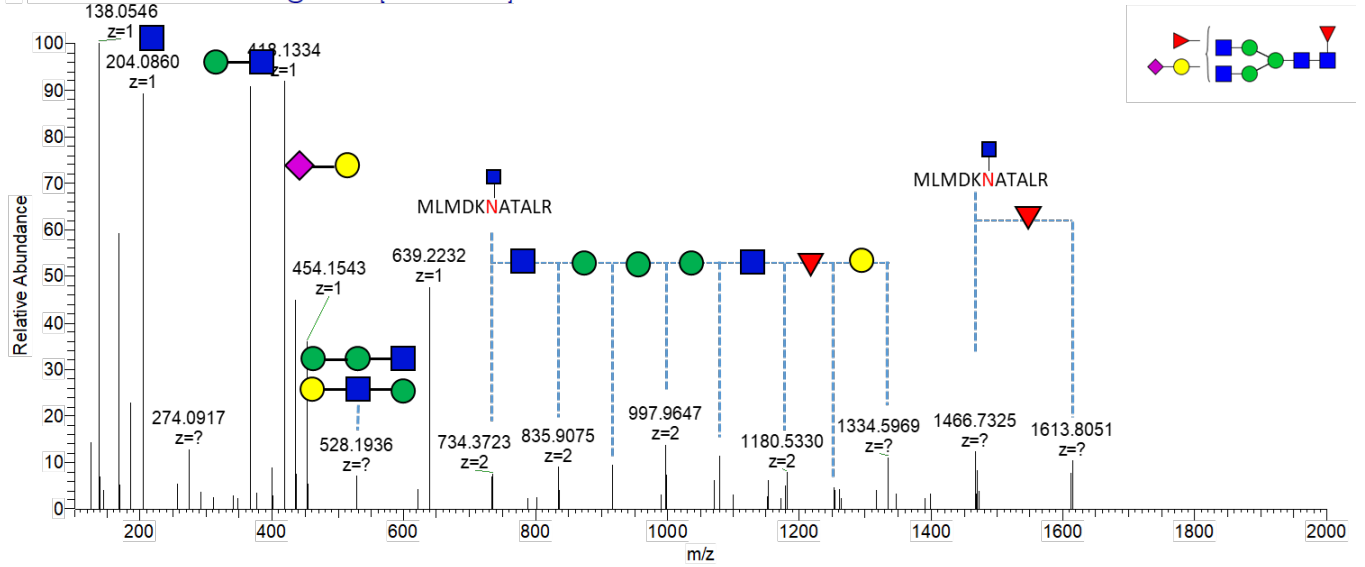
# 42-N

F8\_HILIC\_JQ#3264 RT: 13.45 AV: 1 NL: 5.19E4  
 T: FTMS + c NSI d Full ms2 1162.82@hcd27.00 [100.00-2000.00]



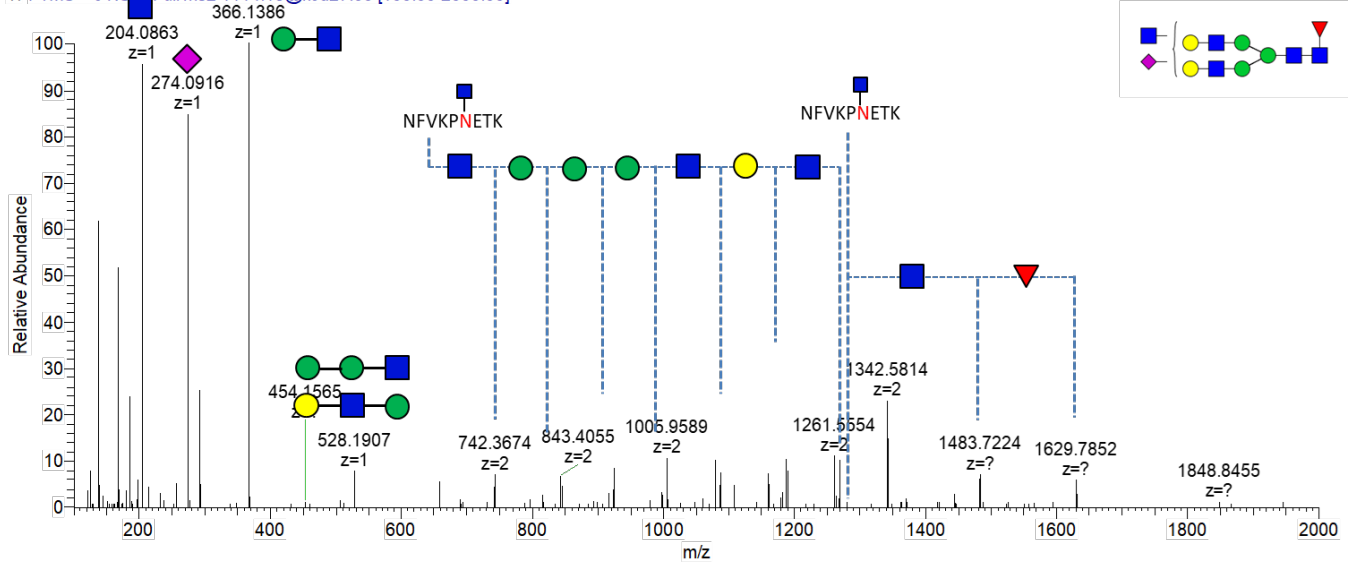
# 43-N

F8\_HILIC\_JQ#2772 RT: 12.05 AV: 1 NL: 9.77E4  
 T: FTMS + c NSI.d Full ms2 1102.80@hcd27.00 [100.00-2000.00]



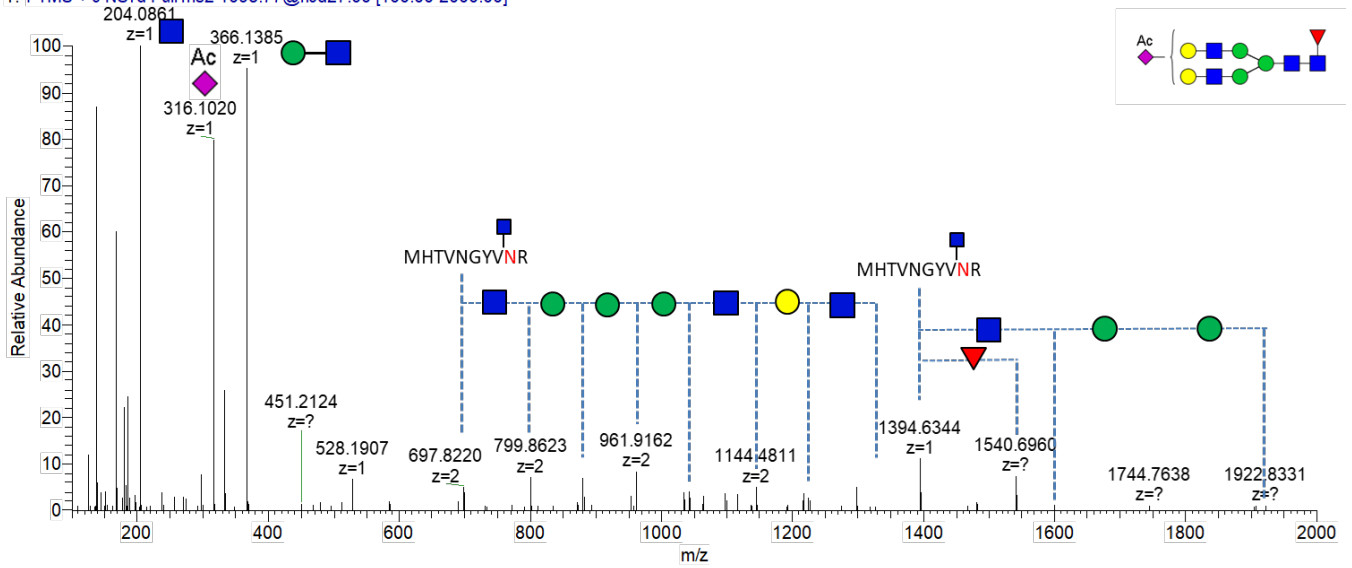
# 44-N

F8\_HILIC\_JQ#2795 RT: 12.12 AV: 1 NL: 1.23E5  
 T: FTMS + c NSI.d Full ms2 1114.13@hcd27.00 [100.00-2000.00]



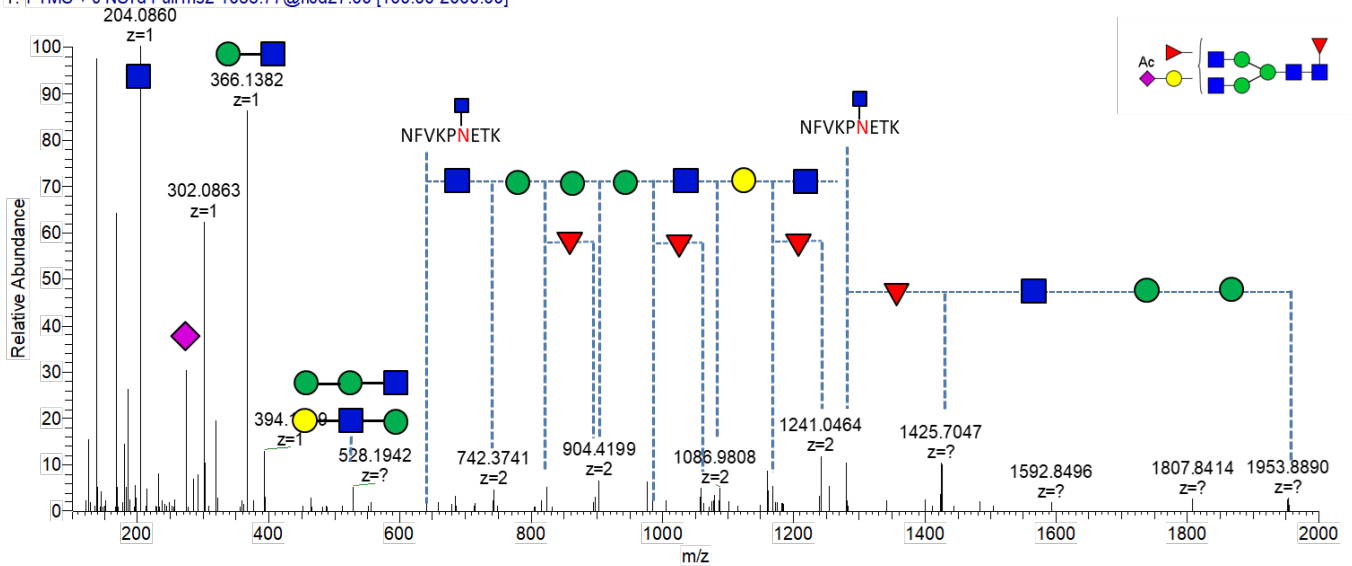
# 45-N

F8\_HILIC\_JQ#2740 RT: 11.97 AV: 1 NL: 8.76E4  
 T: FTMS + c NSI d Full ms2 1098.77@hcd27.00 [100.00-2000.00]



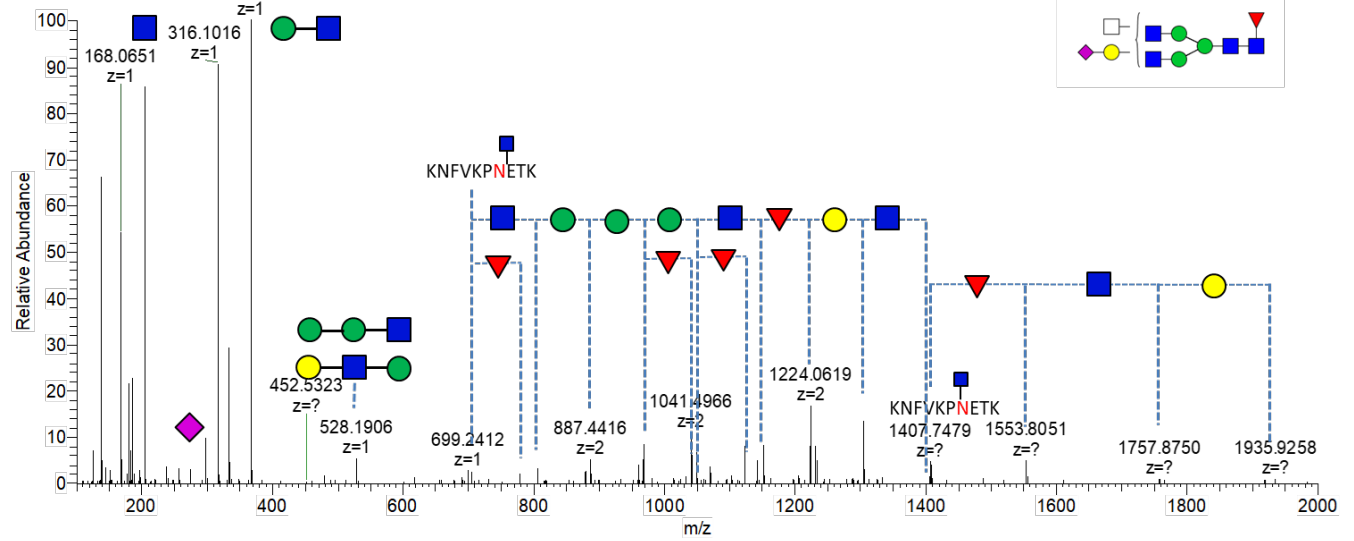
# 46-N

F8\_HILIC\_JQ#1812 RT: 9.15 AV: 1 NL: 1.05E5  
 T: FTMS + c NSI d Full ms2 1055.77@hcd27.00 [100.00-2000.00]



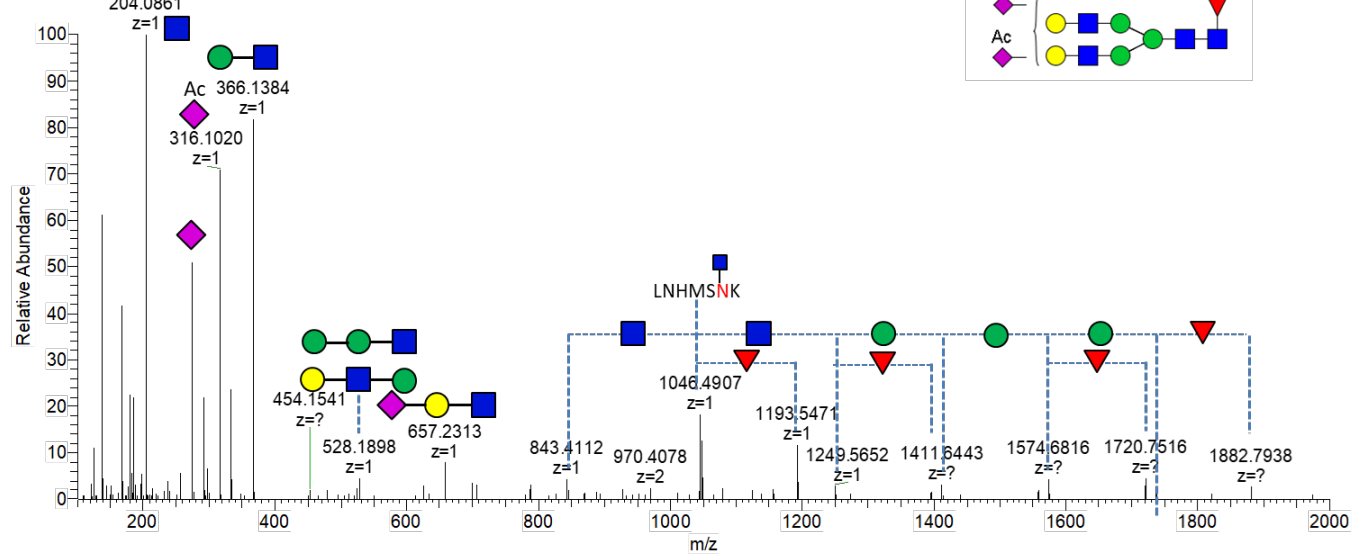
# 47-N

F8\_HILIC\_JQ#1361 RT: 7.62 AV: 1 NL: 4.22E4  
 T: FTMS + c NSI d Full ms2 1103.47@hcd27.00 [100.00-2000.00]



# 48-N

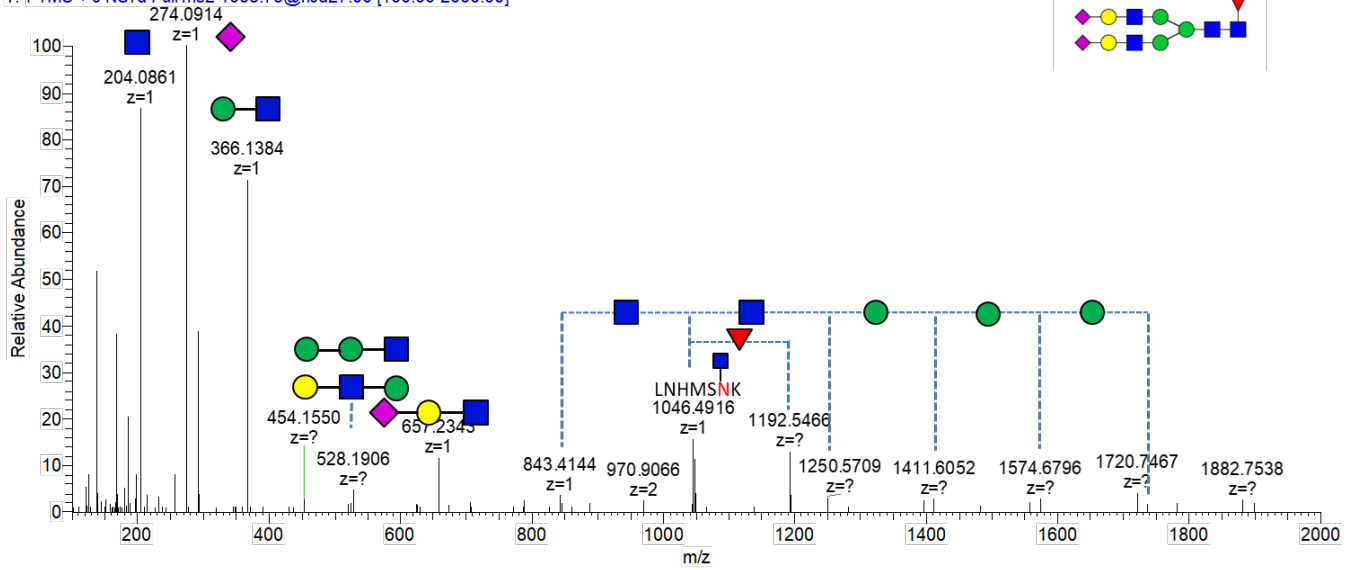
F8\_HILIC\_JQ#1520 RT: 8.25 AV: 1 NL: 2.89E4  
 T: FTMS + c NSI d Full ms2 1079.75@hcd27.00 [100.00-2000.00]





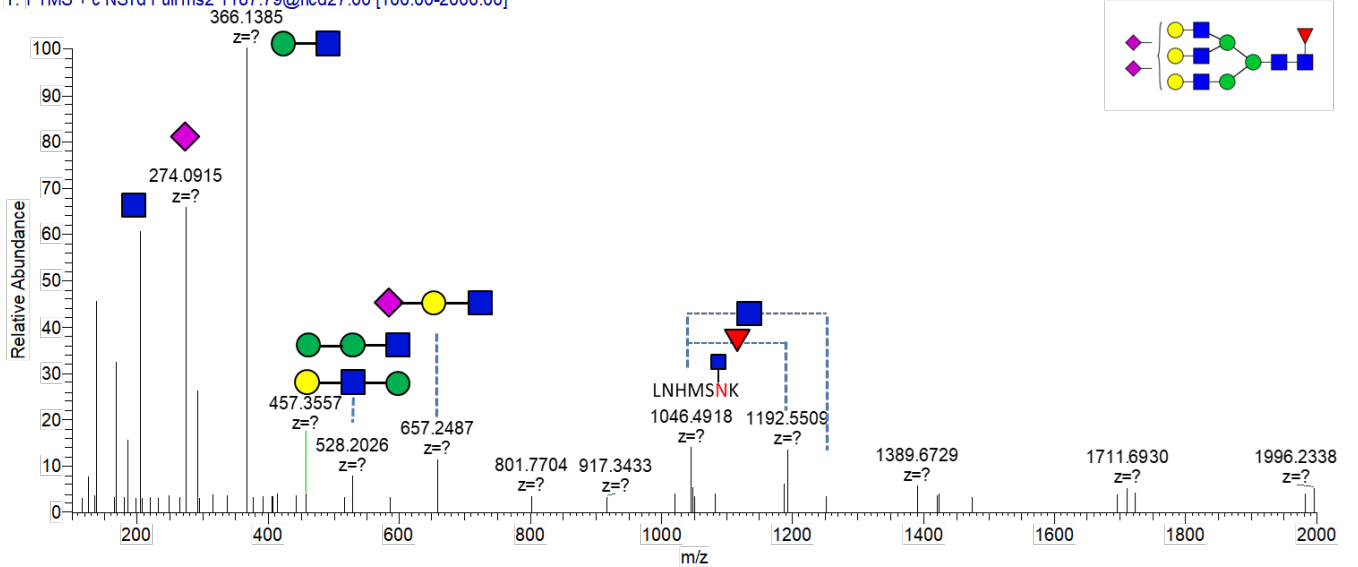
# 49-N

F8\_HILIC\_JQ#1181 RT: 6.72 AV: 1 NL: 2.15E4  
T: FTMS + c NSI d Full ms2 1065.75@hcd27.00 [100.00-2000.00]



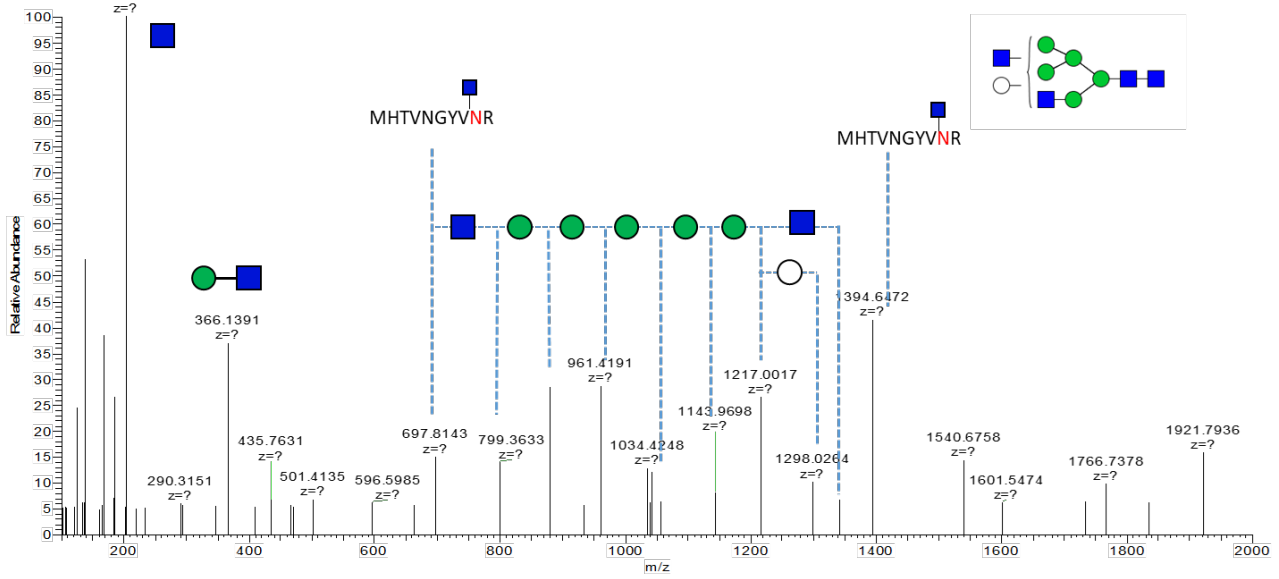
# 50-N

F8\_HILIC\_JQ#1308 RT: 7.38 AV: 1 NL: 3.62E3  
T: FTMS + c NSI d Full ms2 1187.79@hcd27.00 [100.00-2000.00]



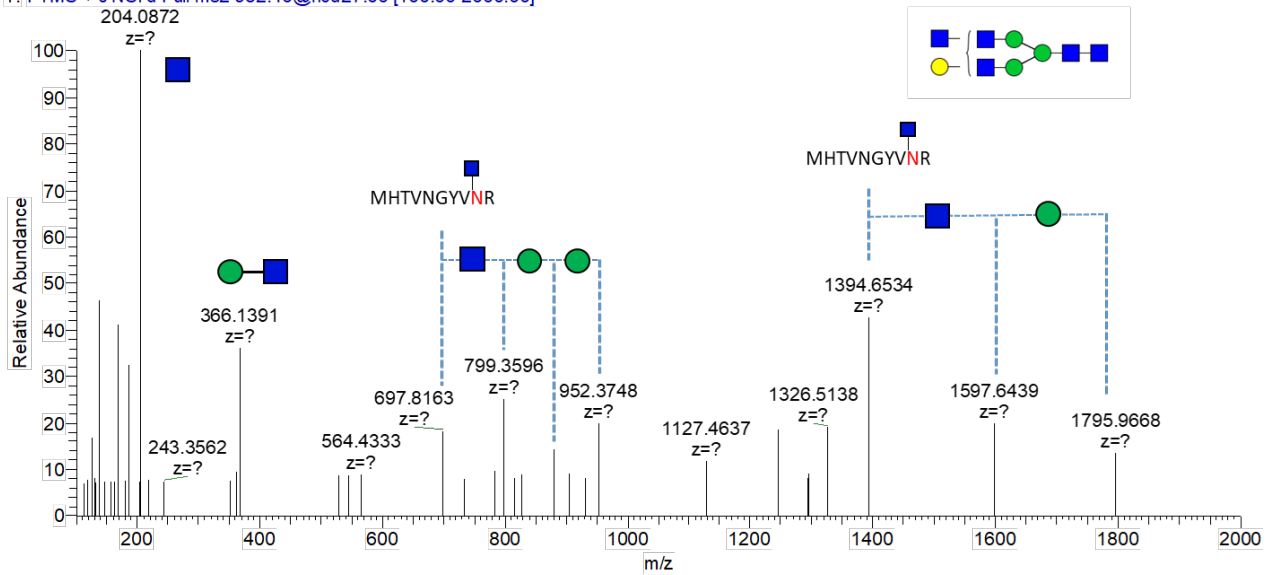
# 51-N

FVIII\_HILIC1 #1081 RT: 9.18 AV: 1 NL: 2.50E3  
 T: FTMS + c NSI d Full ms2 933.39@hcd27.00 [100.00-2000.00]  
 204.0869



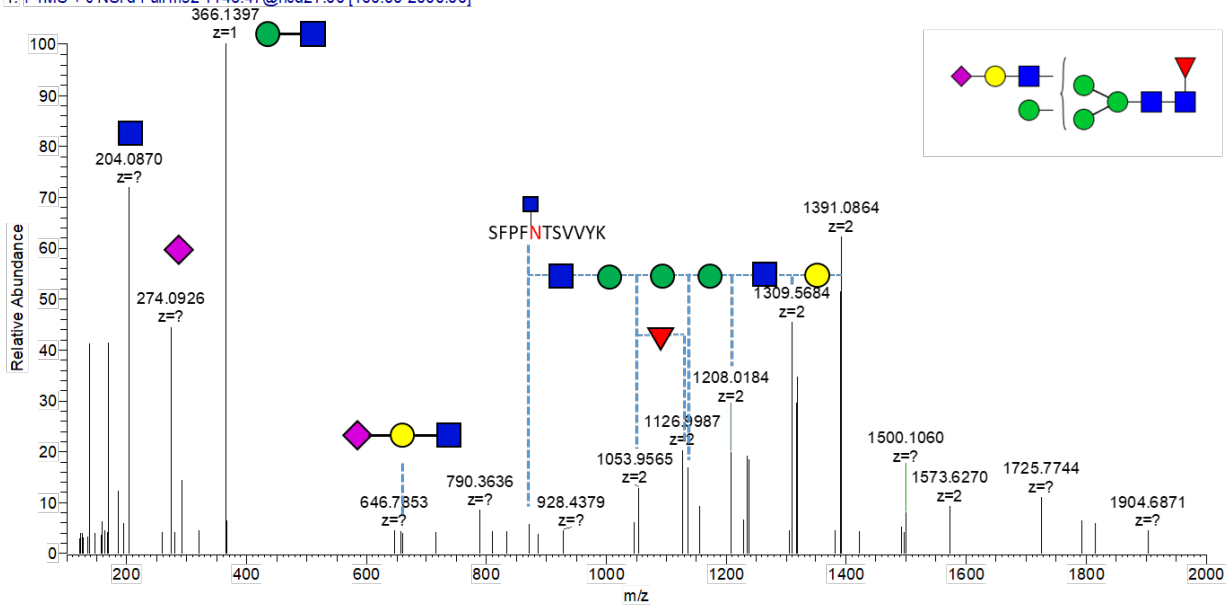
# 52-N

FVIII\_HILIC1 #1074 RT: 9.15 AV: 1 NL: 1.31E3  
 T: FTMS + c NSI d Full ms2 952.40@hcd27.00 [100.00-2000.00]  
 204.0872



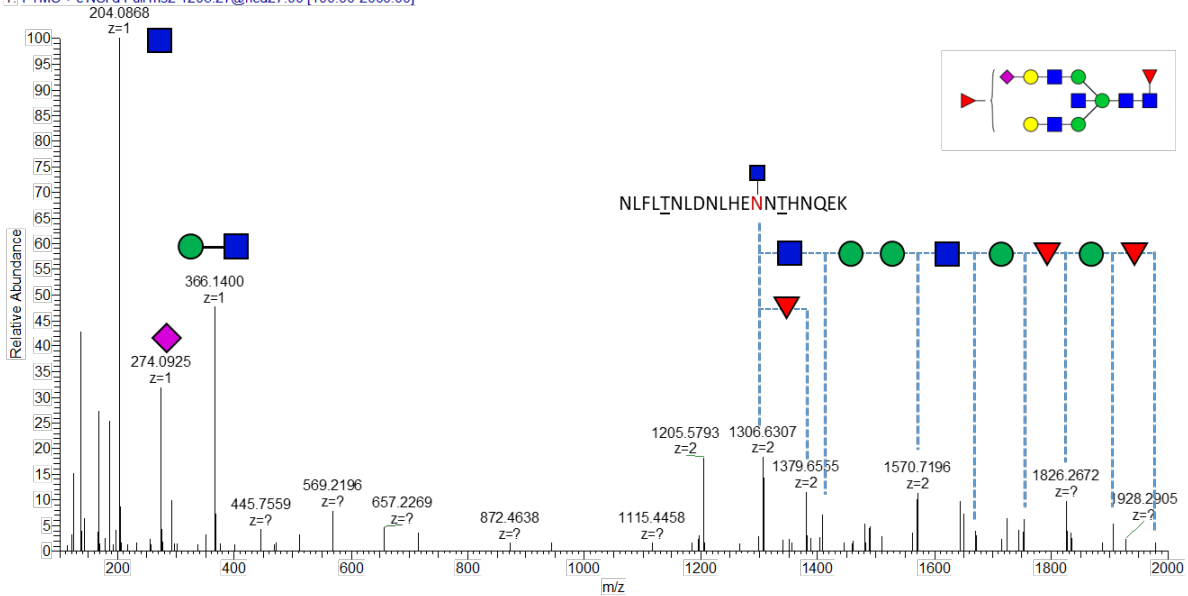
# 53-N

FVIII\_HILIC1#818 RT: 7.82 | AV: 1 | NL: 2.70E3  
 T: FTMS + c NSI d Full ms2 1146.47@hcd27.00 [100.00-2000.00]



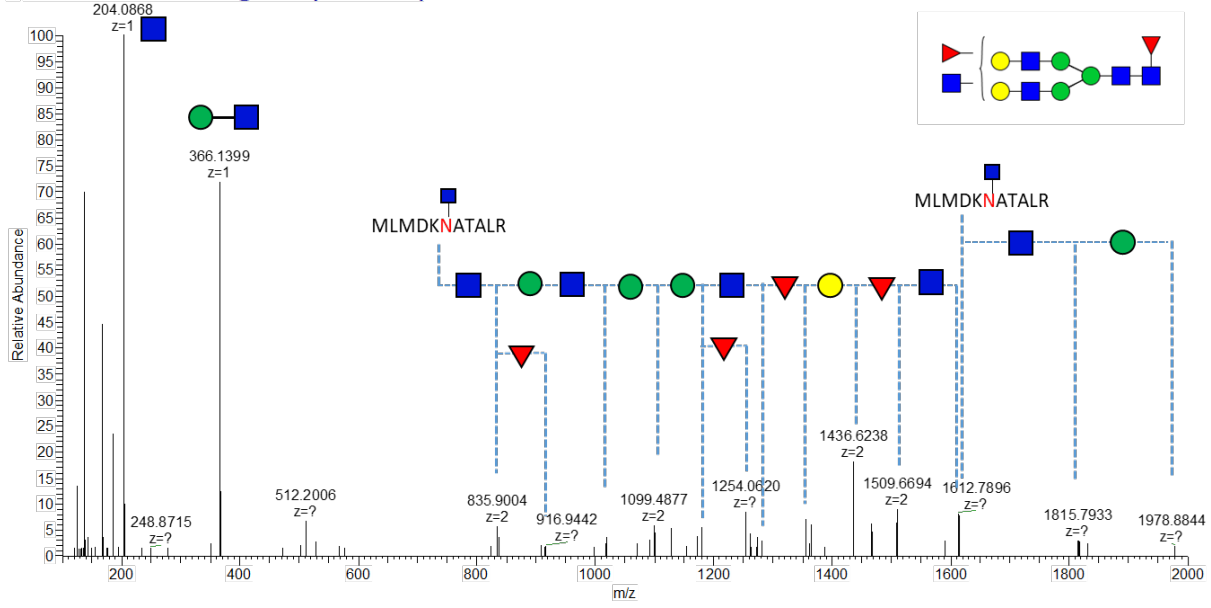
# 54-N

FVIII\_HILIC1#2838 RT: 16.79 | AV: 1 | NL: 1.38E4  
 T: FTMS + c NSI d Full ms2 1205.27@hcd27.00 [100.00-2000.00]



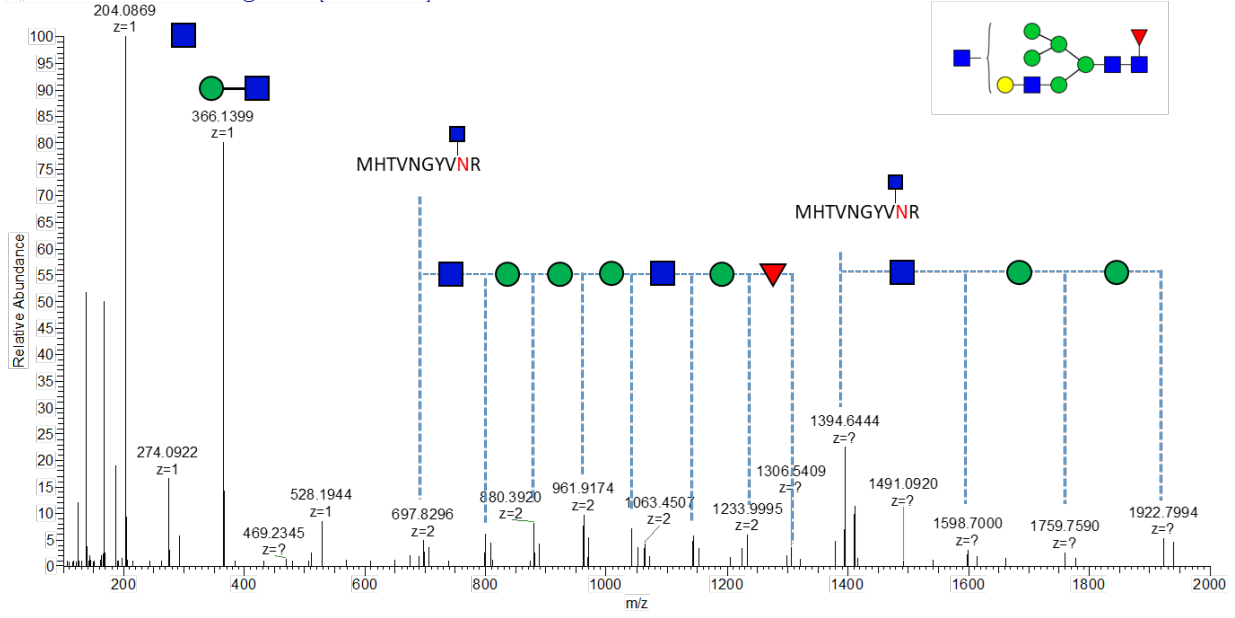
# 55-N

FVIII\_HILIC1 #1621 RT: 11.57 AV: 1 NL: 9.20E3  
 T: FTMS + c NSI d Full ms2 1128.49@hcd27.00 [100.00-2000.00]



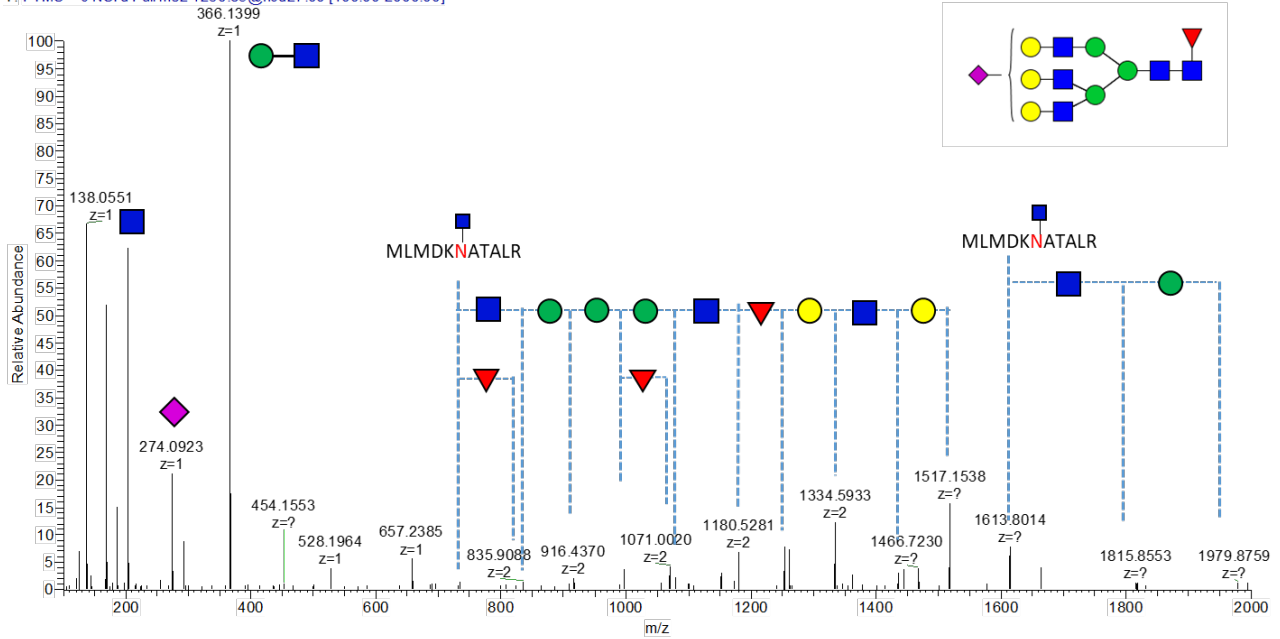
# 56-N

FVIII\_HILIC1 #1025 RT: 8.93 AV: 1 NL: 1.12E4  
 T: FTMS + c NSI d Full ms2 1041.76@hcd27.00 [100.00-2000.00]



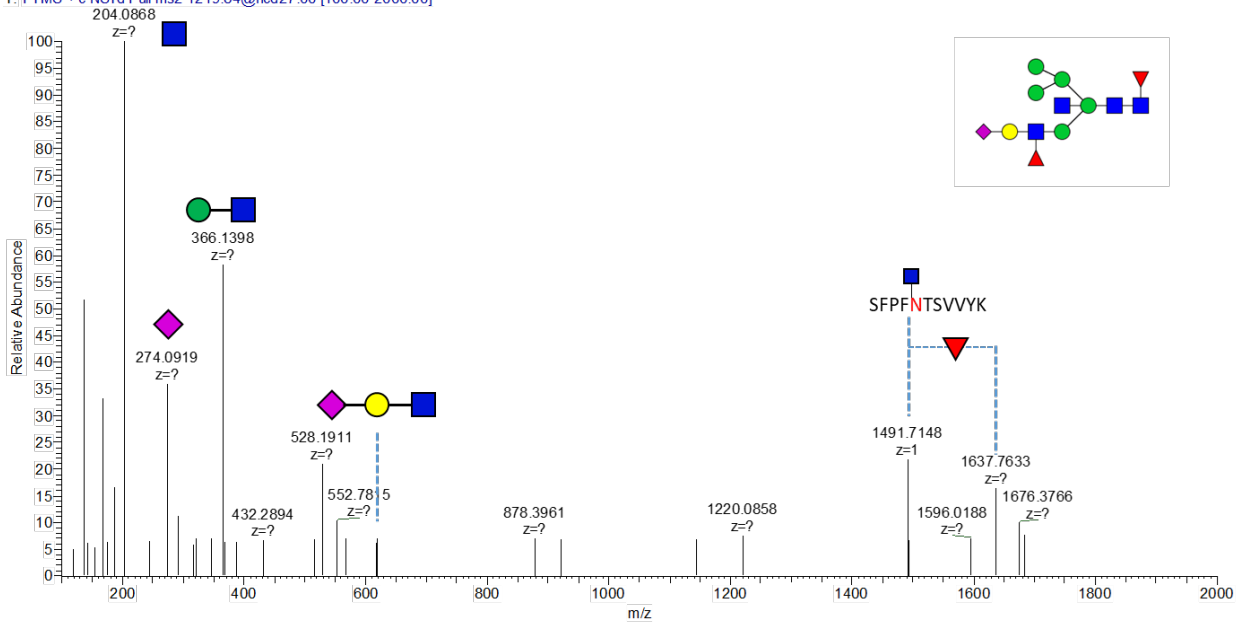
# 57-N

FVIII\_HILIC1 #1786 RT: 12.31 AV: 1 NL: 3.61E4  
 T: FTMS + c NSI d Full ms2 1230.85@hcd27.00 [100.00-2000.00]



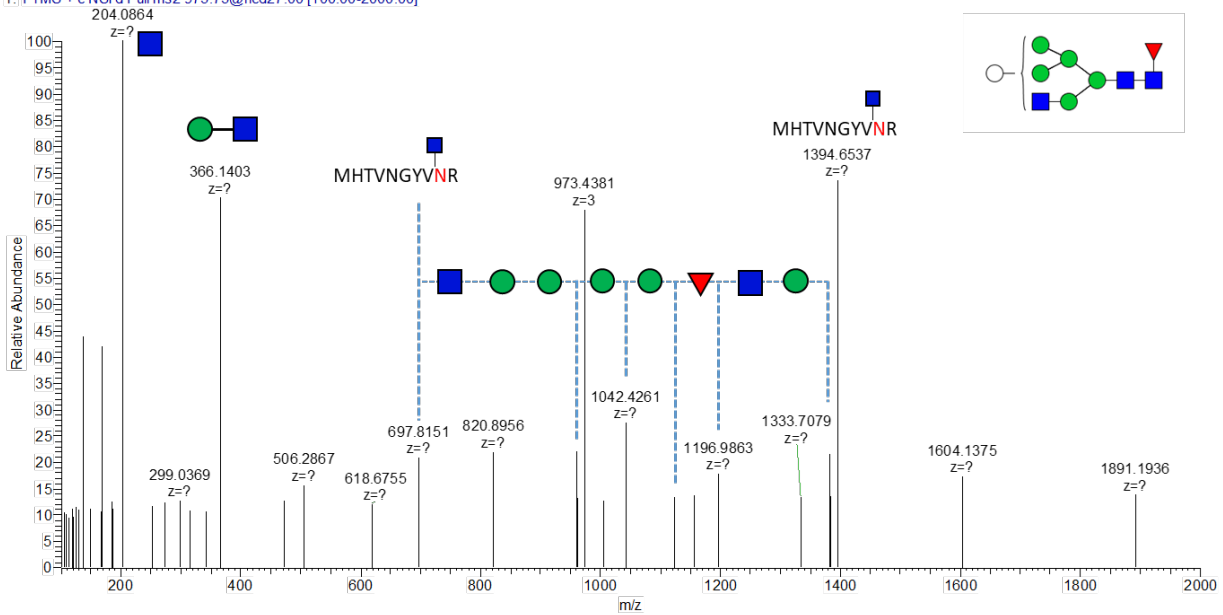
# 58-N

FVIII\_HILIC1 #3455 RT: 19.10 AV: 1 NL: 1.48E4  
 T: FTMS + c NSI d Full ms2 1219.84@hcd27.00 [100.00-2000.00]



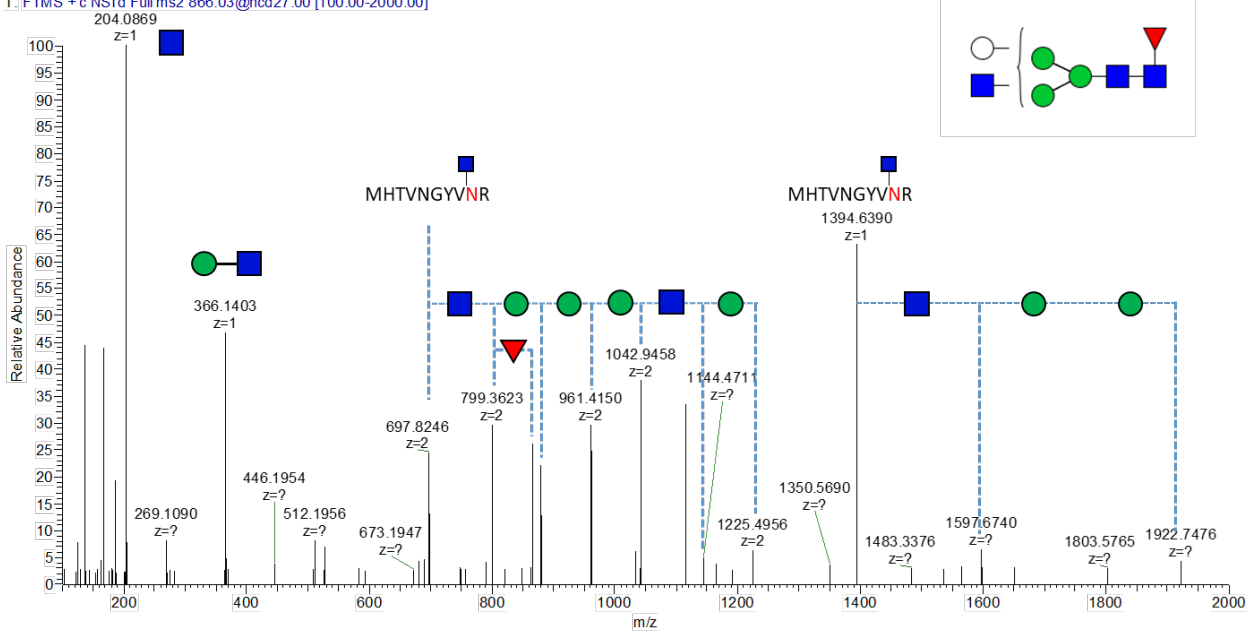
# 59-N

FVIII\_HILIC1 #1124 RT: 9.36 AV: 1 NL: 9.16E2  
 T: FTMS + c NSI d Full ms2 973.73@hcd27.00 [100.00-2000.00]



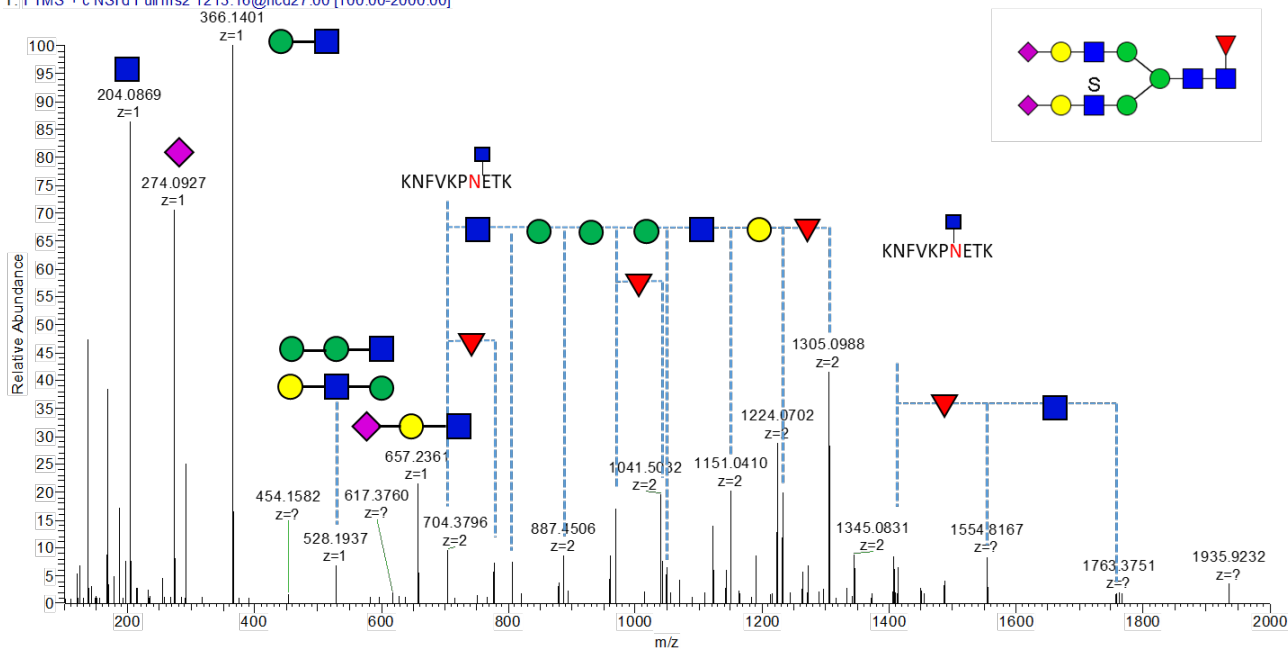
# 60-N

FVIII\_HILIC1 #1083 RT: 9.19 AV: 1 NL: 5.51E3  
 T: FTMS + c NSI d Full ms2 866.03@hcd27.00 [100.00-2000.00]



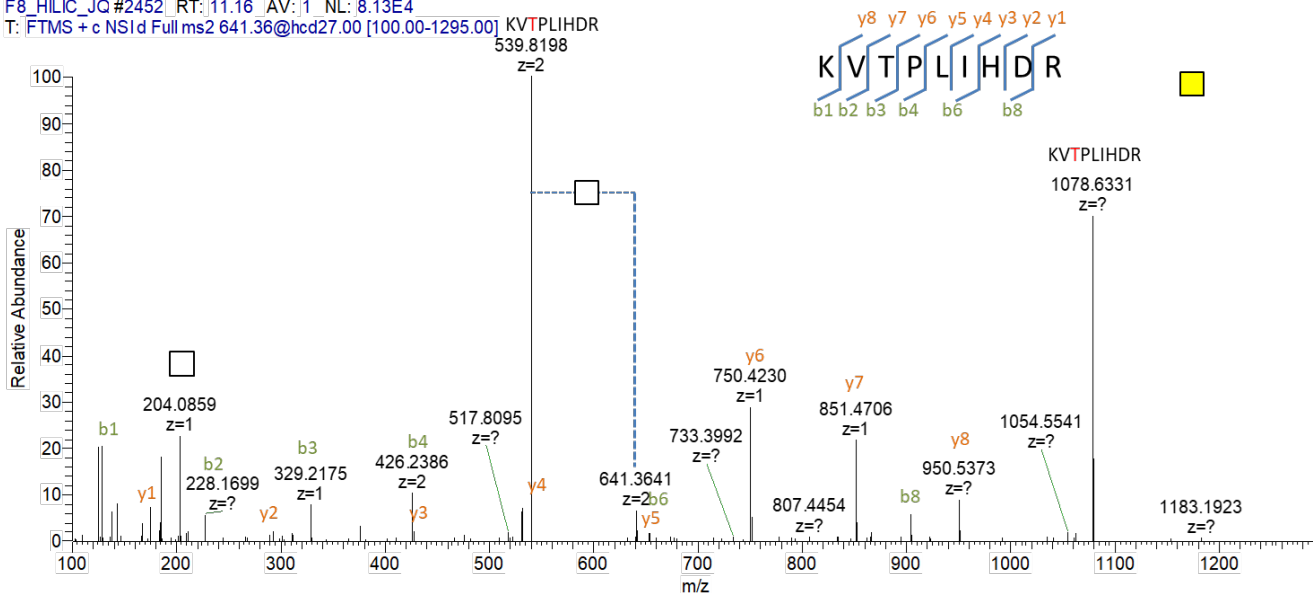
# 61-N

FVIII\_HILIC1 #946 RT: 8.51 AV: 1 NL: 1.37E4  
 T: FTMS + c NSI d Full ms2 1213.16@hcd27.00 [100.00-2000.00]



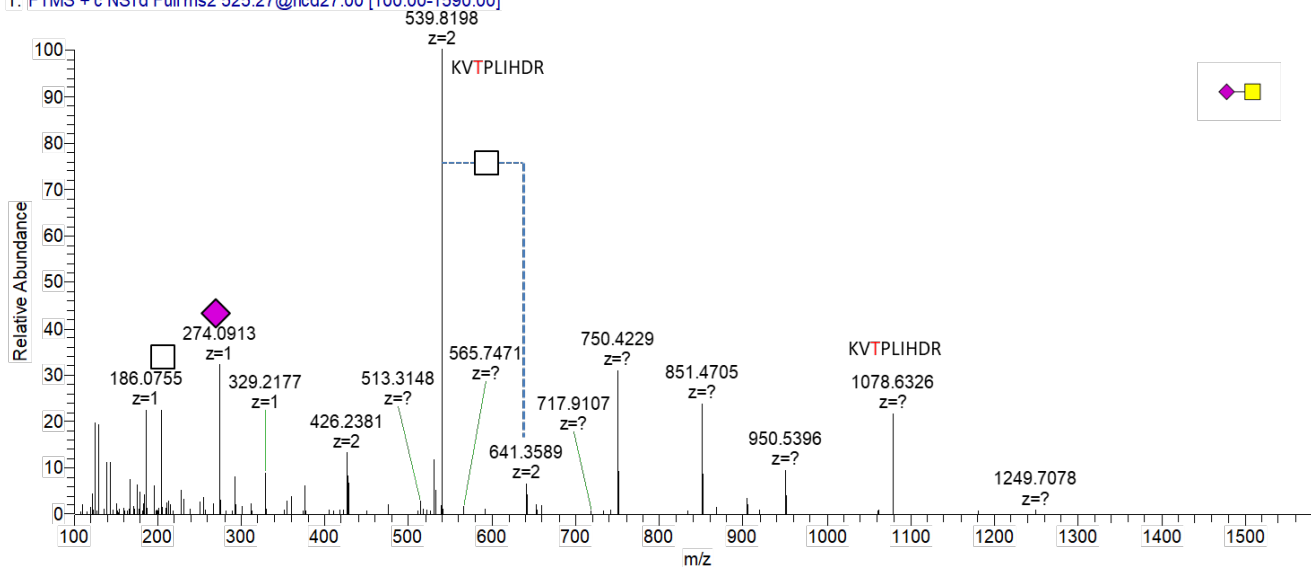
# 1-0

F8\_HILIC\_JQ #2452 RT: 11.16 AV: 1 NL: 8.13E4  
 T: FTMS + c NSI d Full ms2 641.36@hcd27.00 [100.00-1295.00]



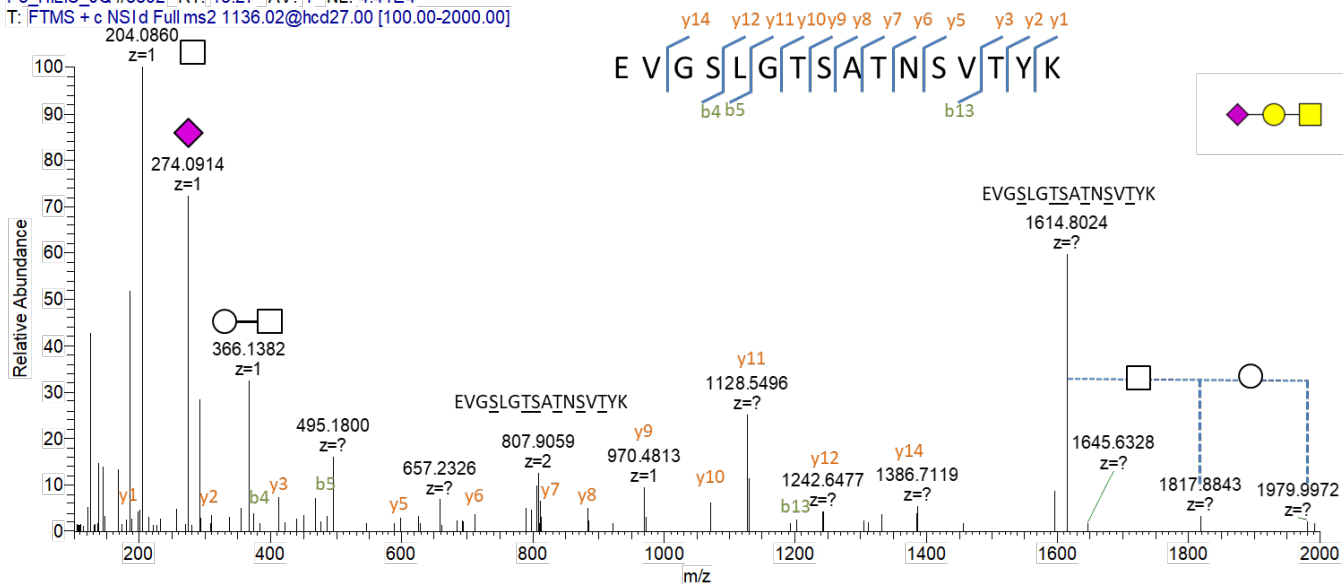
## 2-0

F8\_HILIC\_JQ#2426 RT: 11.08 AV: 1 NL: 1.33E5  
 T: FTMS + c NSI d Full ms2 525.27@hcd27.00 [100.00-1590.00]



## 3-0

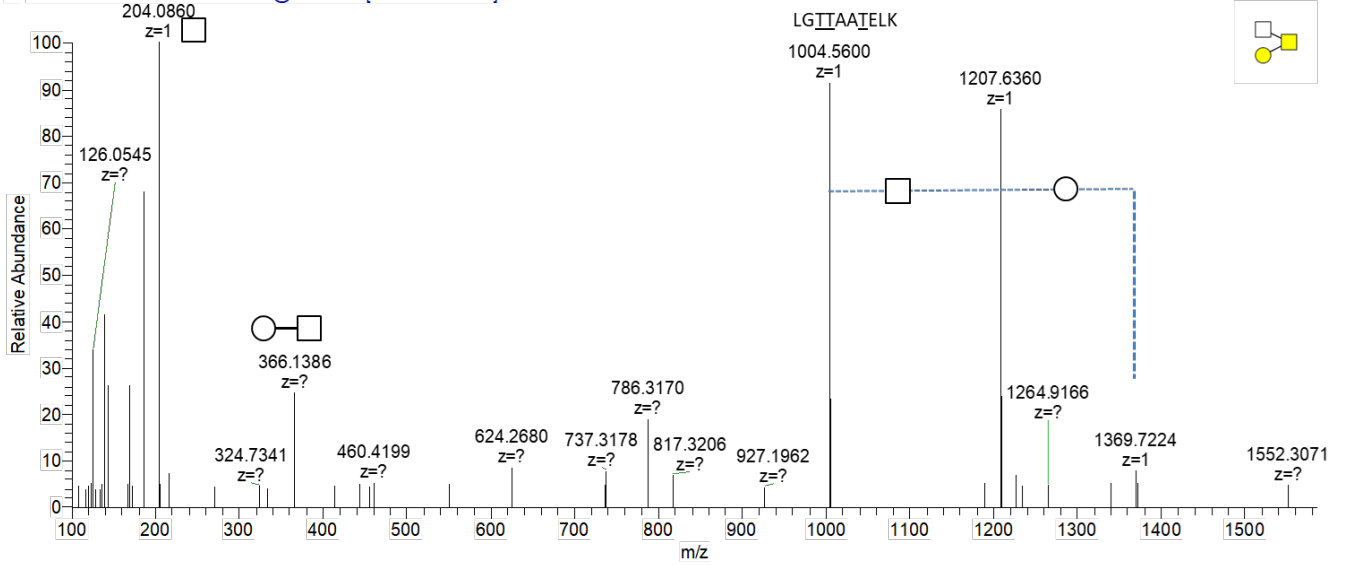
F8\_HILIC\_JQ#3892 RT: 15.27 AV: 1 NL: 4.41E4  
 T: FTMS + c NSI d Full ms2 1136.02@hcd27.00 [100.00-2000.00]





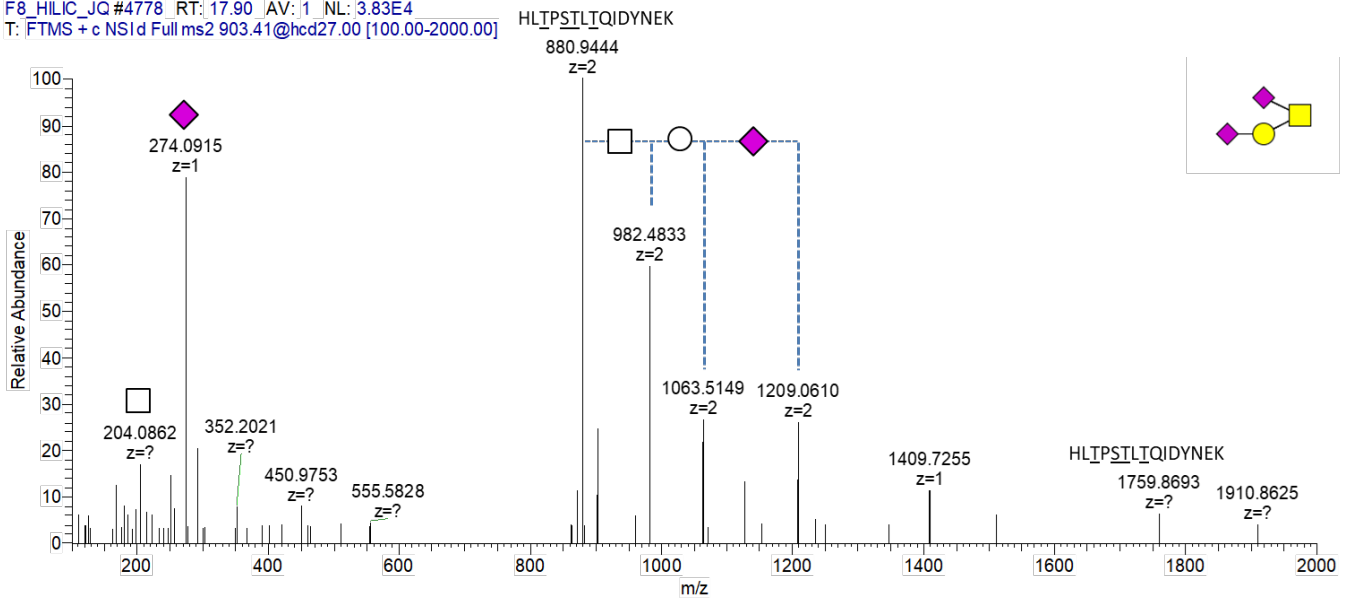
# 4-O

F8\_HILIC\_JQ#2265 RT: 10.55 AV: 1 NL: 9.09E3  
T: FTMS + c NSI d Full ms2 786.89@hcd27.00 [100.00-1585.00]



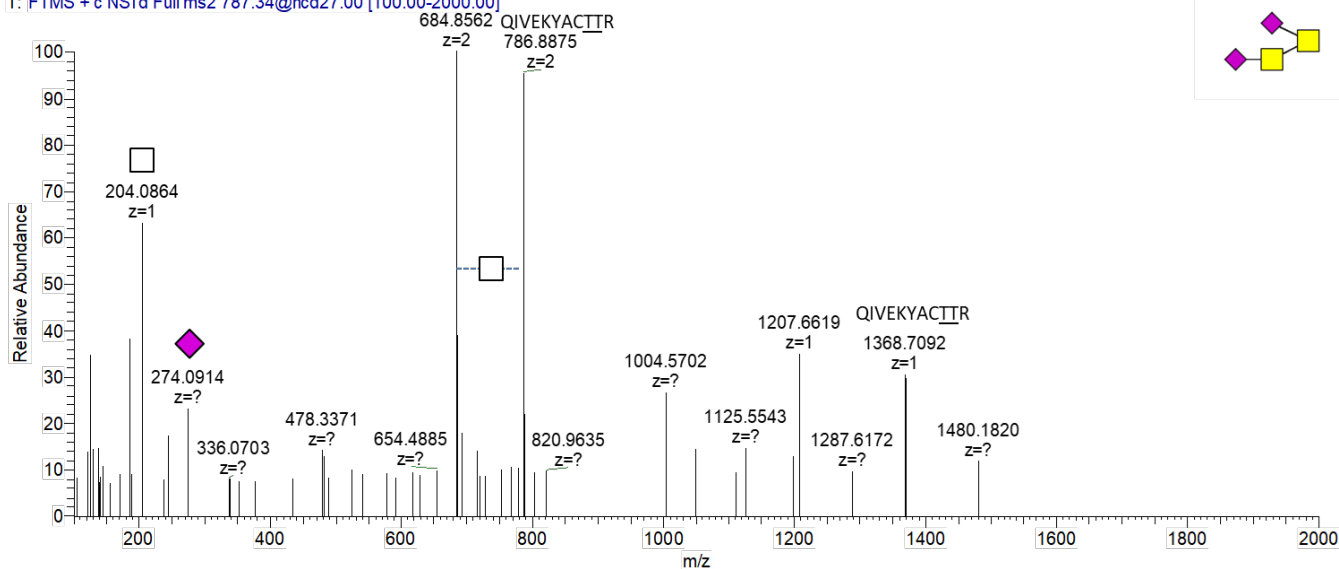
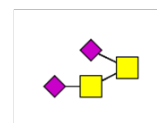
# 5-O

F8\_HILIC\_JQ#4778 RT: 17.90 AV: 1 NL: 3.83E4  
T: FTMS + c NSI d Full ms2 903.41@hcd27.00 [100.00-2000.00]



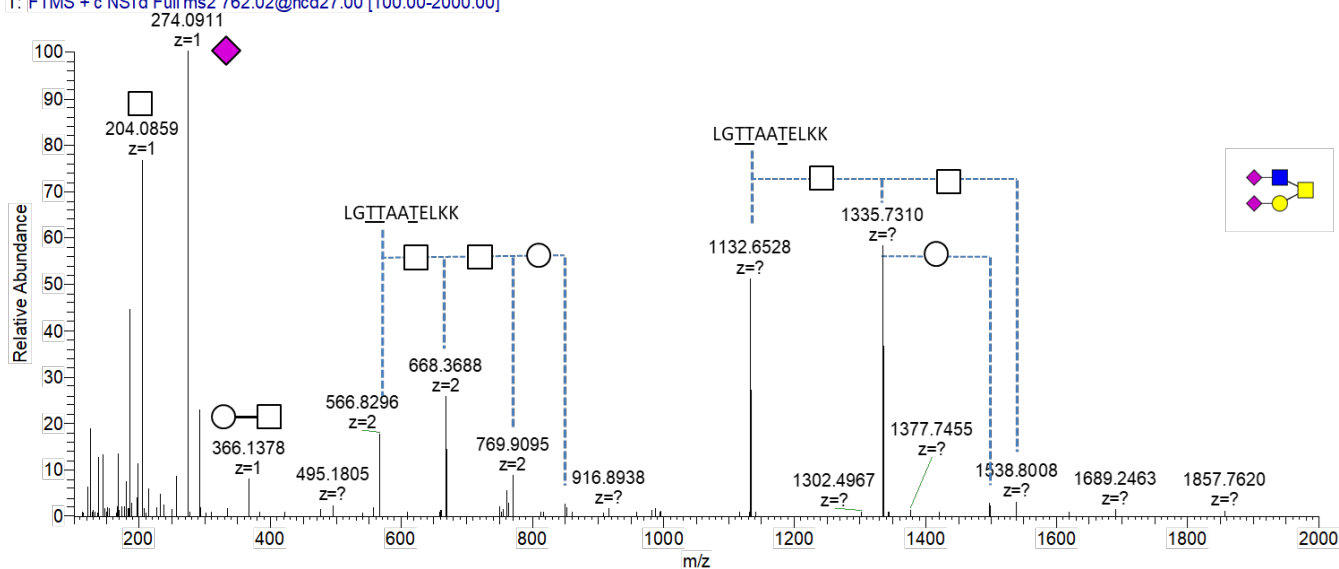
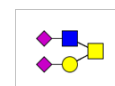
# 6-0

F8\_HILIC\_JQ#3452 RT: 13.97 | AV: 1 | NL: 4.07E3  
 T: FTMS + c NSI d Full ms2 787.34@hcd27.00 [100.00-2000.00]



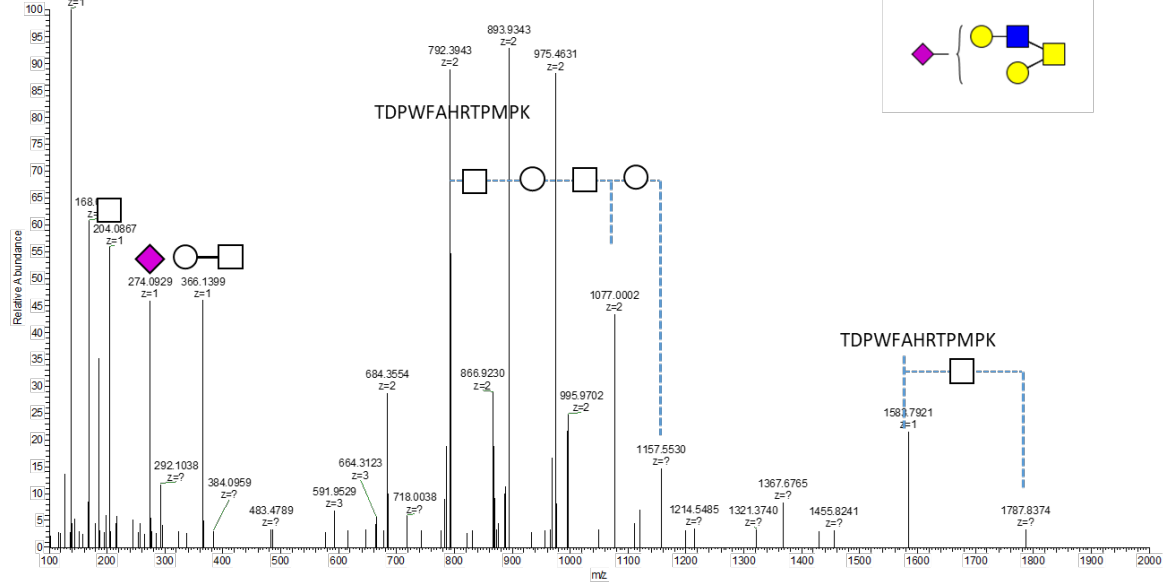
# 7-0

F8\_HILIC\_JQ#2408 RT: 11.02 | AV: 1 | NL: 4.31E4  
 T: FTMS + c NSI d Full ms2 762.02@hcd27.00 [100.00-2000.00]



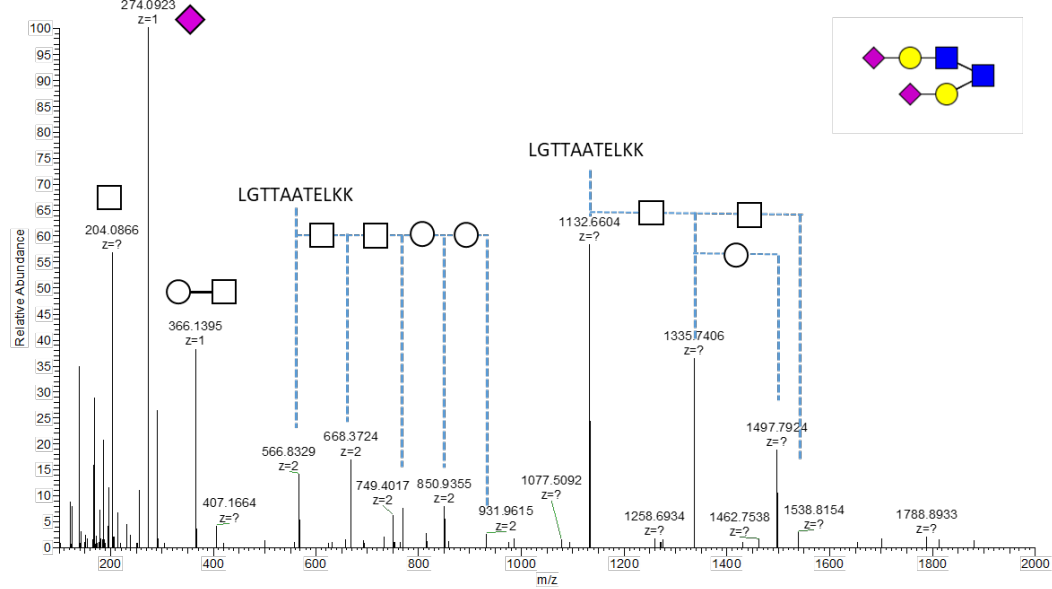
# 8-0

FVII\_HILIC1#1992 RT:13.24 AV:1 NL:8.38E3  
 T:FTMS +c NSId Fullms2 869.96@hcd27.00 [100.00-2000.00]  
 138.0551



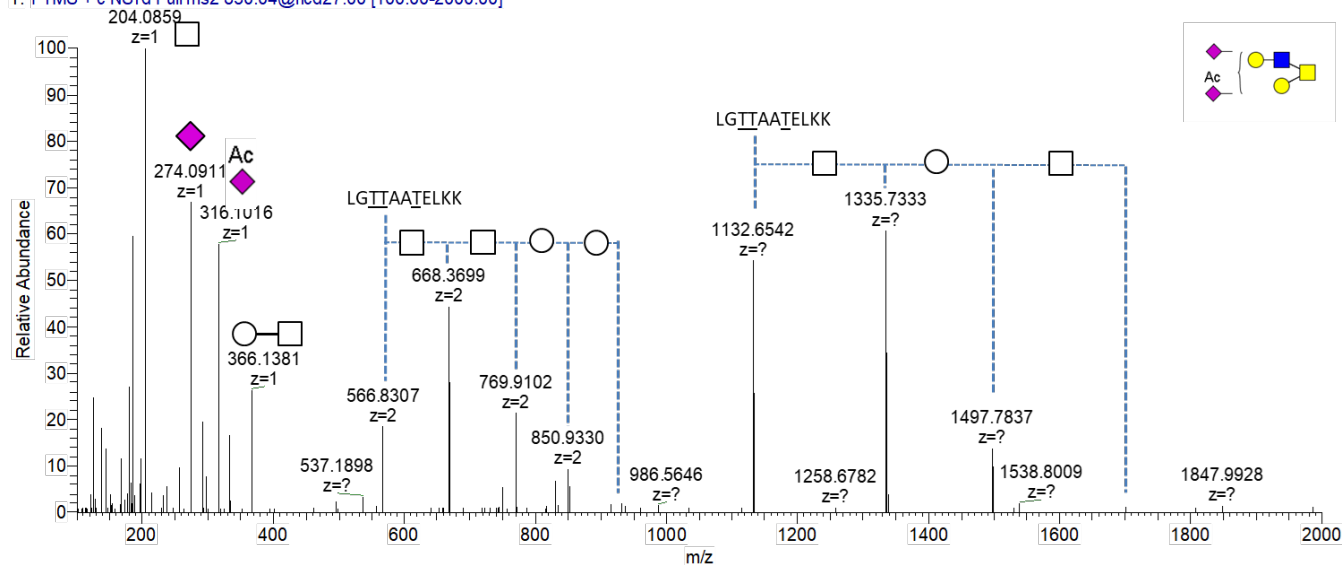
# 9-0

FVII\_HILIC1 #1345 RT:10.37 AV:1 NL:1.53E4  
 T:FTMS +c NSId Fullms2 816.05@hcd27.00 [100.00-2000.00]



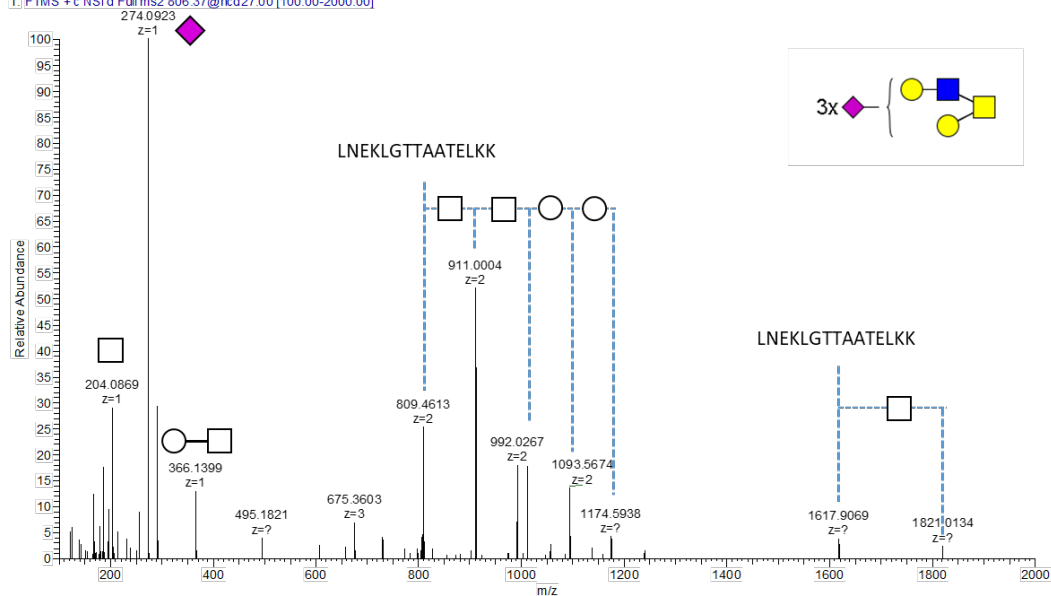
# 10-O

F8\_HILIC\_JQ#2320 RT: 10.74 | AV: 1 | NL: 3.45E4  
 T: FTMS + c NSI d Full ms2 830.04@hcd27.00 [100.00-2000.00]



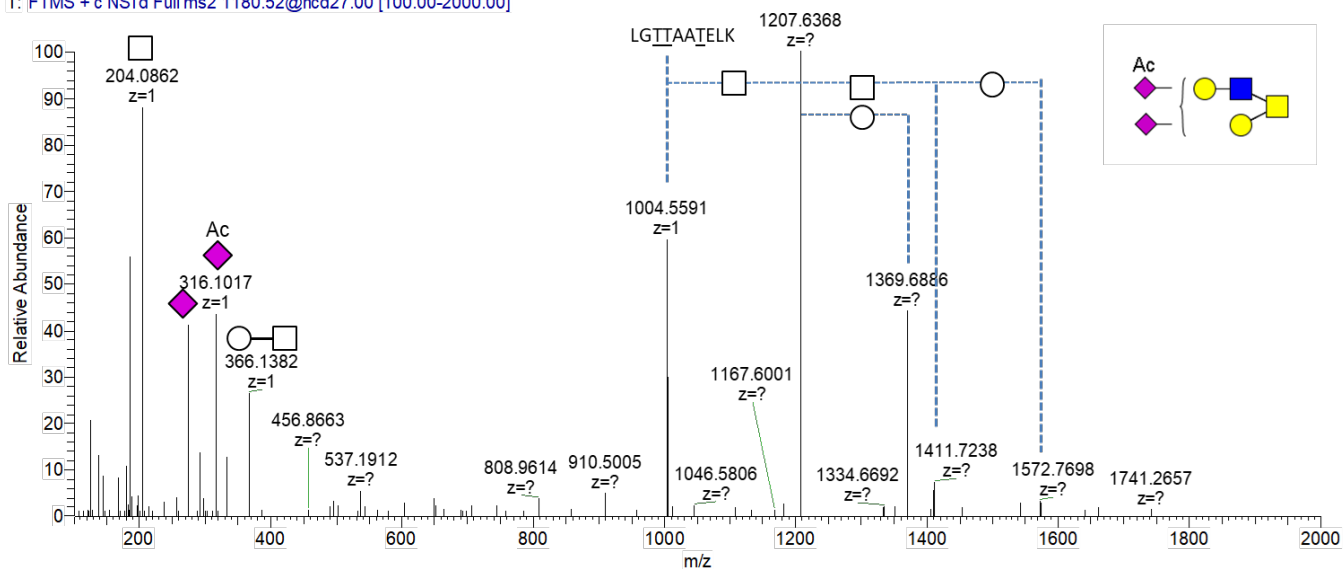
# 11-O

FVII\_HILIC1 #1348 RT: 10.39 | AV: 1 | NL: 3.83E4  
 T: FTMS + c NSI d Full ms2 806.37@hcd27.00 [100.00-2000.00]



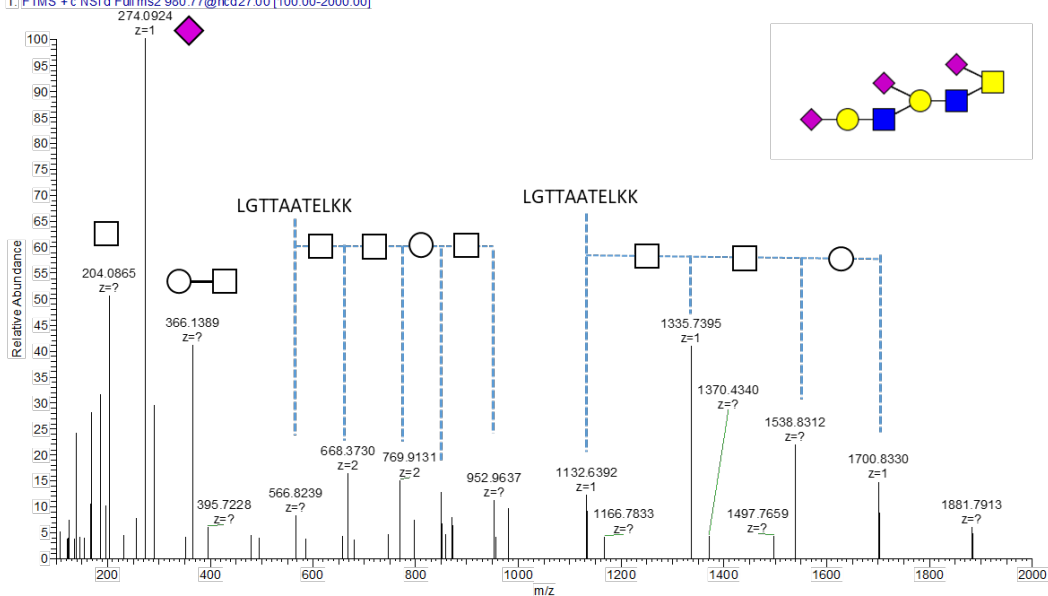
# 12-O

F8\_HILIC\_JQ#3473 RT: 14.03 AV: 1 NL: 2.08E4  
 T: FTMS + c NSI d Full ms2 1180.52@hcd27.00 [100.00-2000.00]



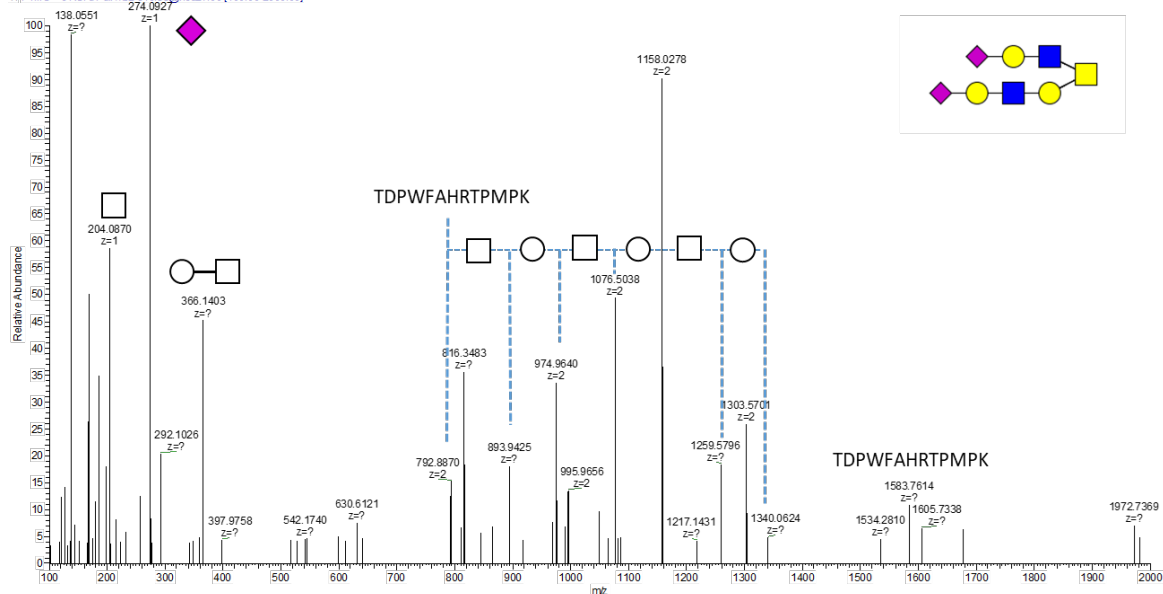
# 13-O

FVII\_HILIC1 #1133 RT: 9.41 AV: 1 NL: 3.00E3  
 T: FTMS + c NSI d Full ms2 980.77@hcd27.00 [100.00-2000.00]



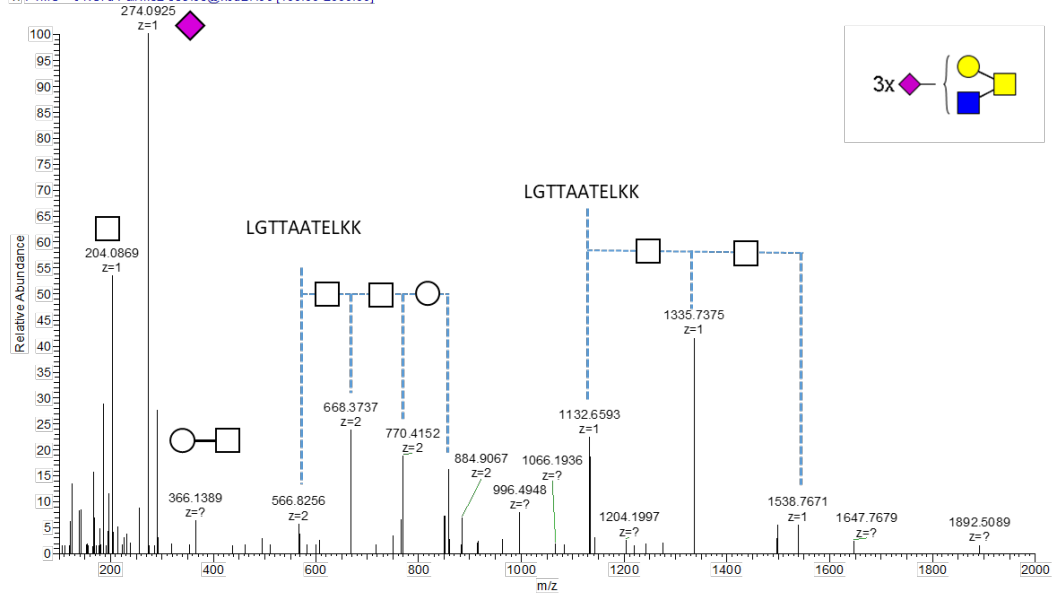
# 14-O

FVII\_HILIC1#2227 | RT: 14.24 | AV: 1 | NL: 4.34E3  
 T: FTMS + c NSI d Full ms2 816.35@hcd27.00 [100.00-2000.00]



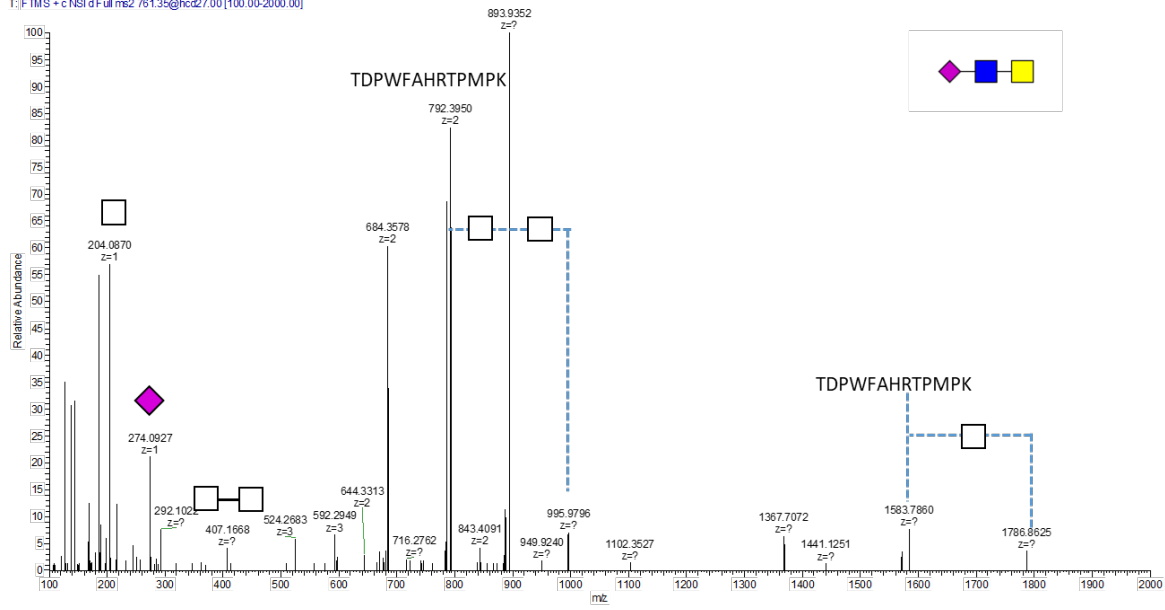
# 15-O

FVII\_HILIC1 #1200 | RT: 9.74 | AV: 1 | NL: 6.62E3  
 T: FTMS + c NSI d Full ms2 859.06@hcd27.00 [100.00-2000.00]



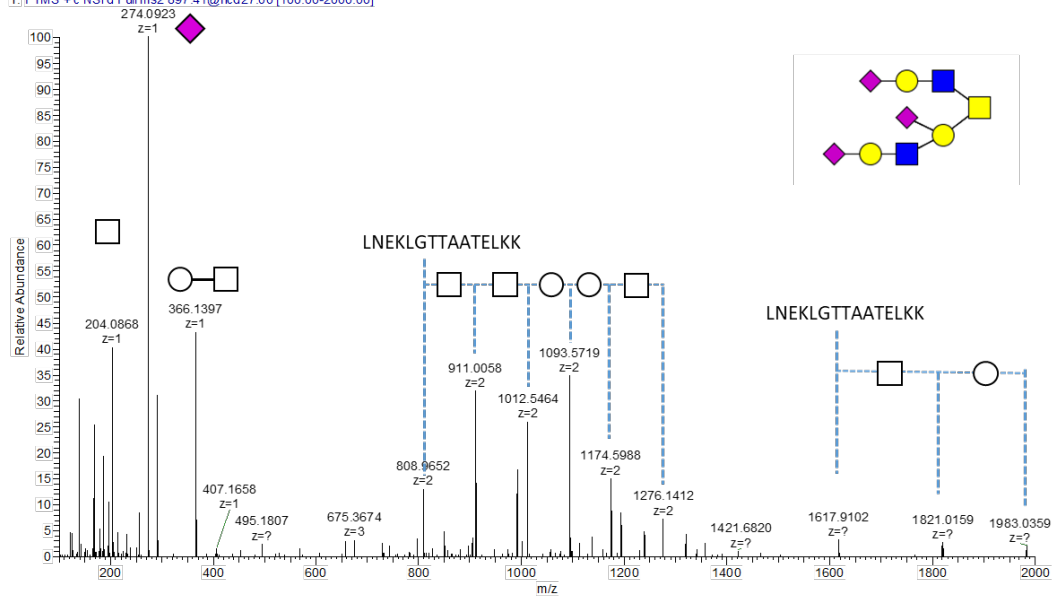
# 16-O

FVII\_HILIC1#2268 | RT: 14.41 | AV: 1 | NL: 2.27E4  
 T: FTMS + c NSI d Full ms2 761.35@hcd27.00 [100.00-2000.00]



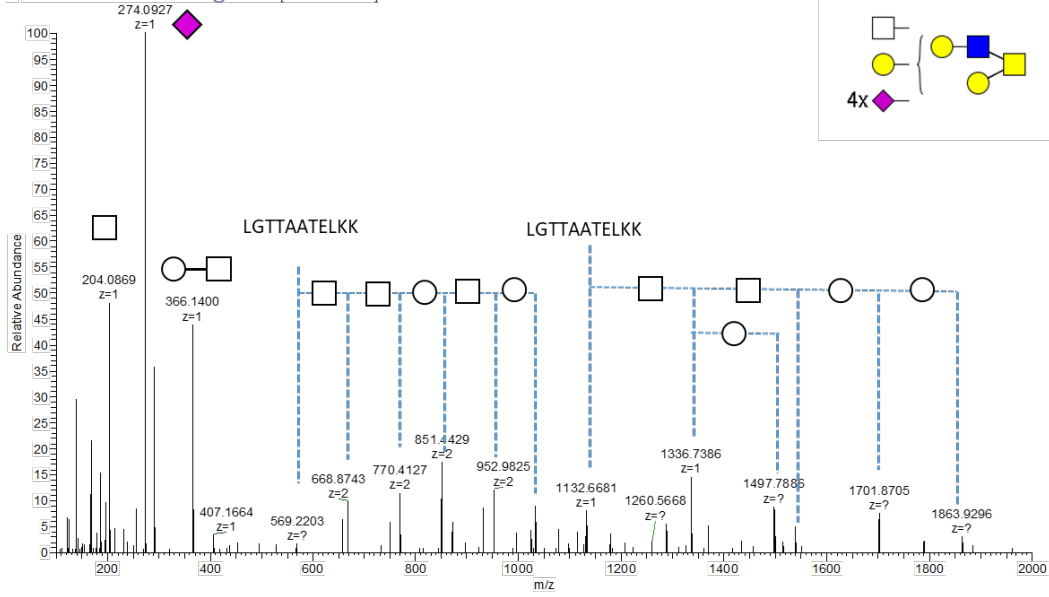
# 17-O

FVII\_HILIC1#1171 | RT: 9.60 | AV: 1 | NL: 2.74E4  
 T: FTMS + c NSI d Full ms2 897.41@hcd27.00 [100.00-2000.00]



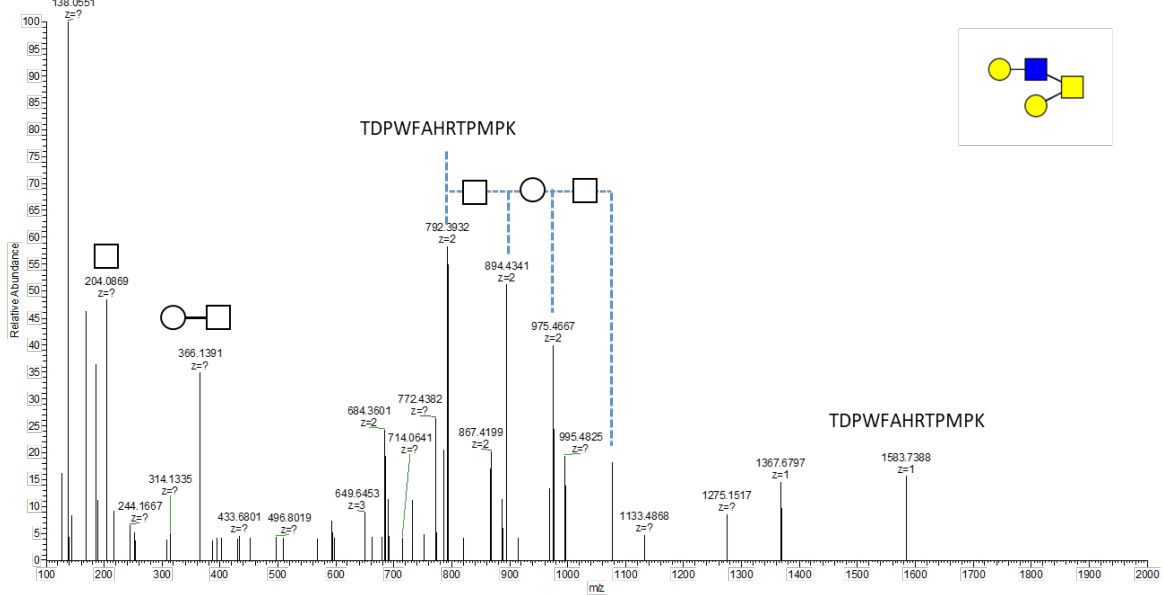
# 18-O

FVII\_HILIC1 #1204 RT: 9.76 AV: 1 NL: 1.37E4  
 T: FTMS + c NSI d Full ms2 1132.16@hcd27.00 [100.00-2000.00]



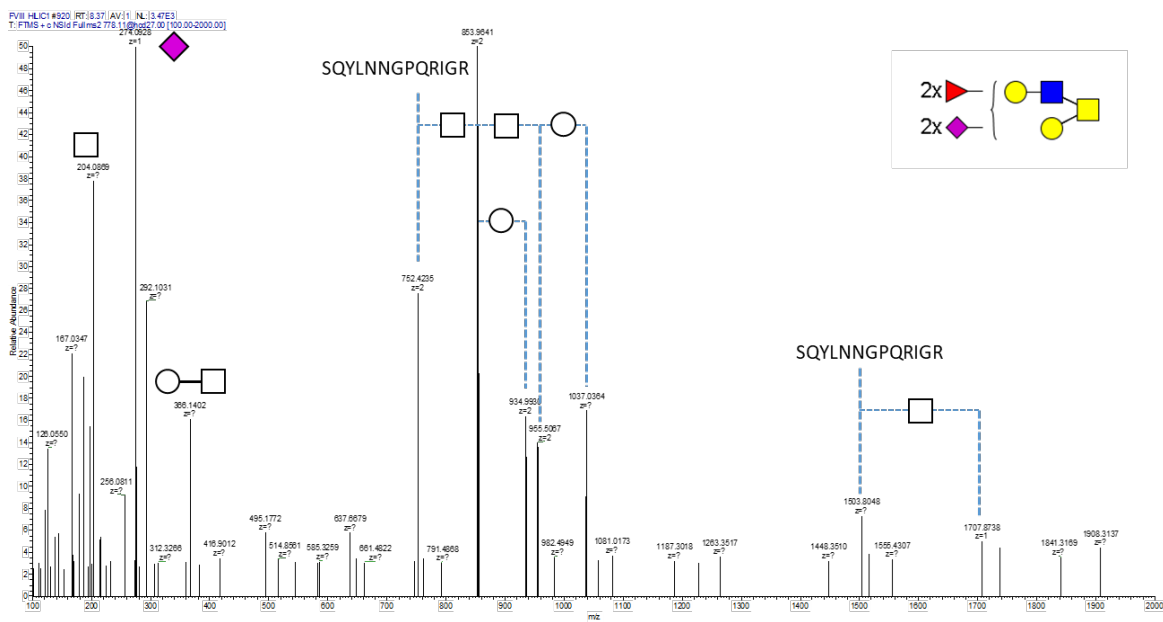
# 19-O

FVII\_HILIC1 #2016 RT: 13.34 AV: 1 NL: 2.54E3  
 T: FTMS + c NSI g Full ms2 772.36@hcd27.00 [100.00-2000.00]

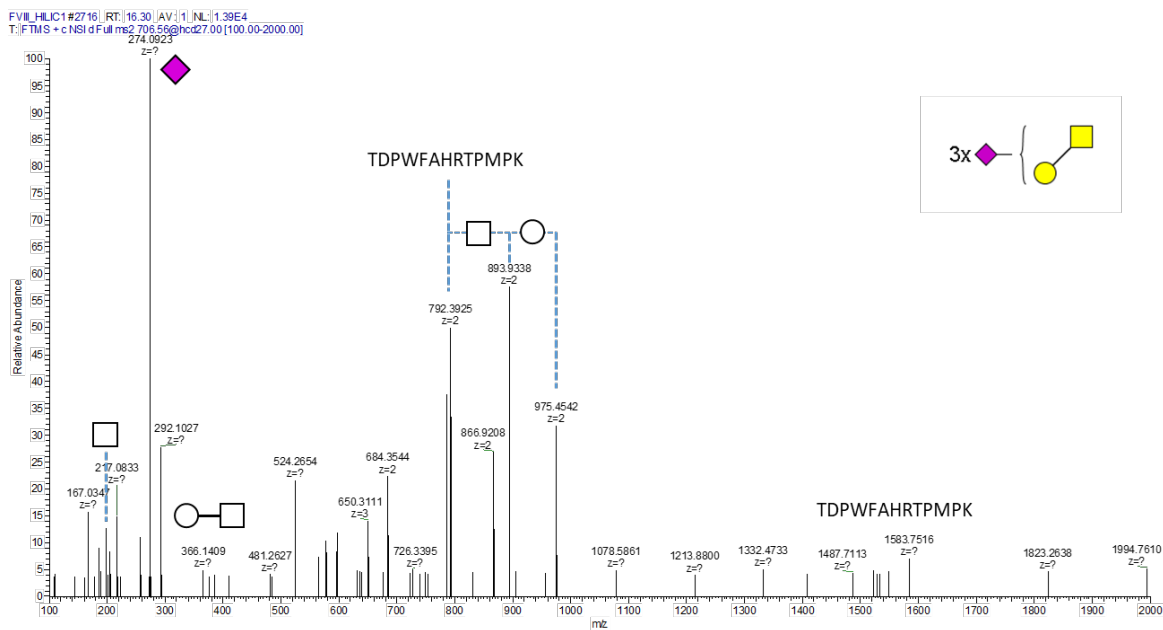




# 20-O

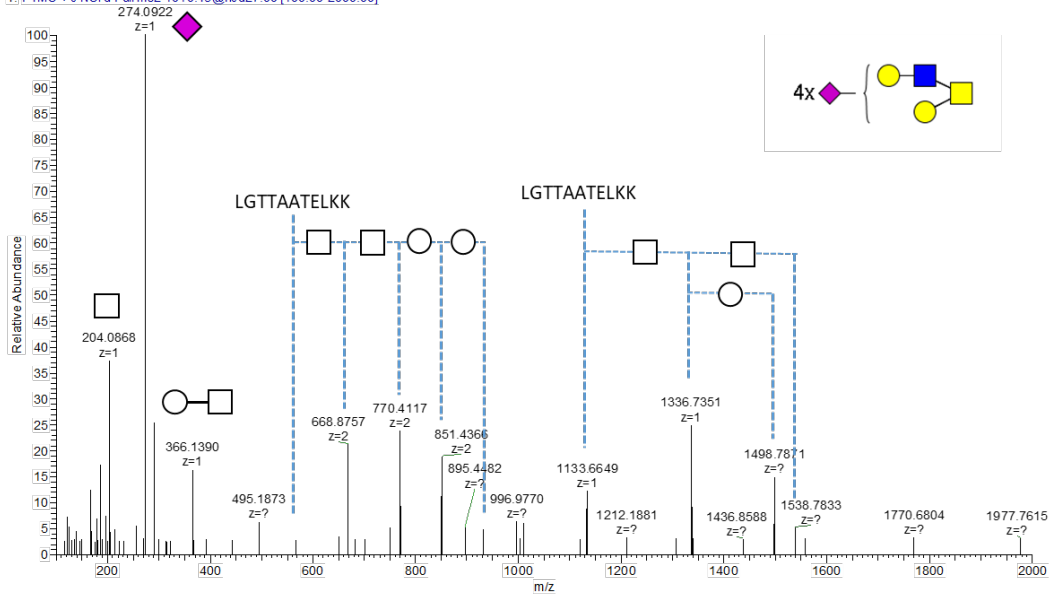


# 21-O



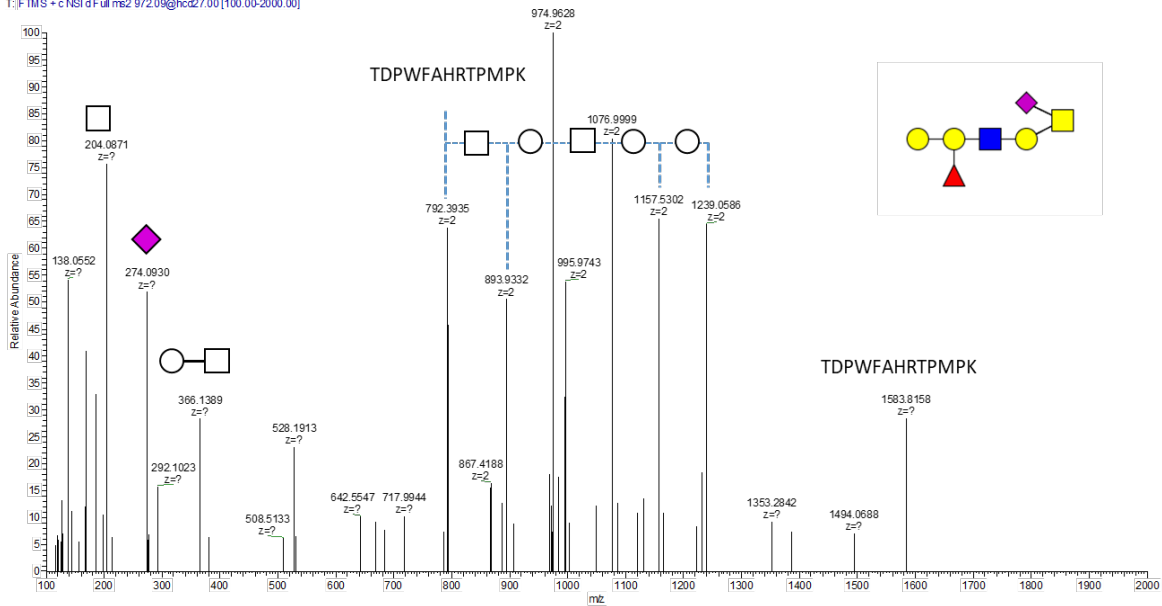
# 22-O

FVII\_HILIC1 #1287 RT: 10.12 AV: 1 NL: 6.82E3  
 T: FTMS + c NSI d Full ms2 1010.45@hcd27.00 [100.00-2000.00]



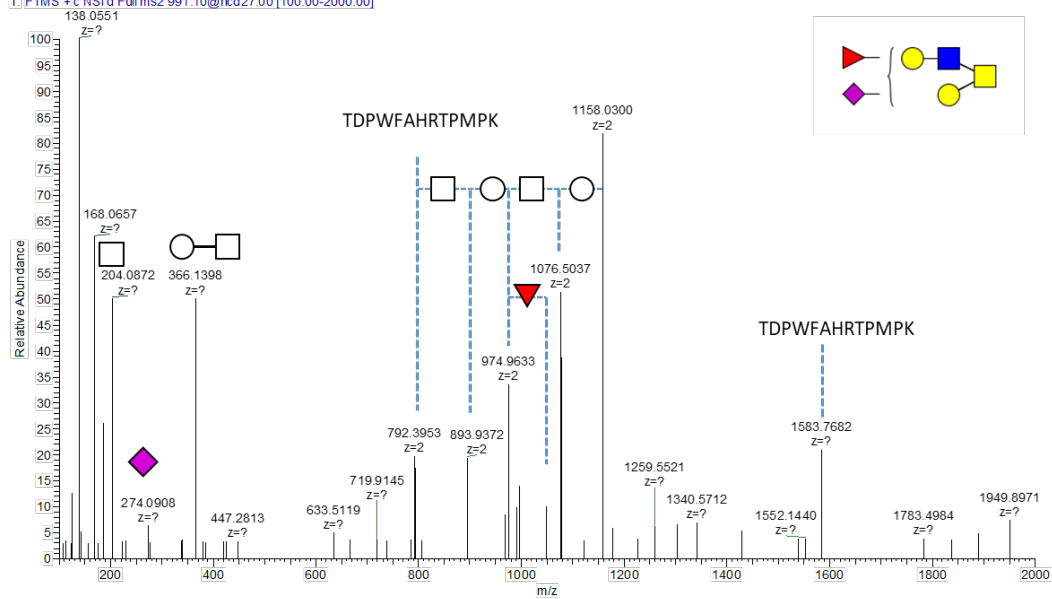
# 23-O

FVII\_HILIC1 #2003 RT: 13.28 AV: 1 NL: 2.79E3  
 T: FTMS + c NSI d Full ms2 972.05@hcd27.00 [100.00-2000.00]



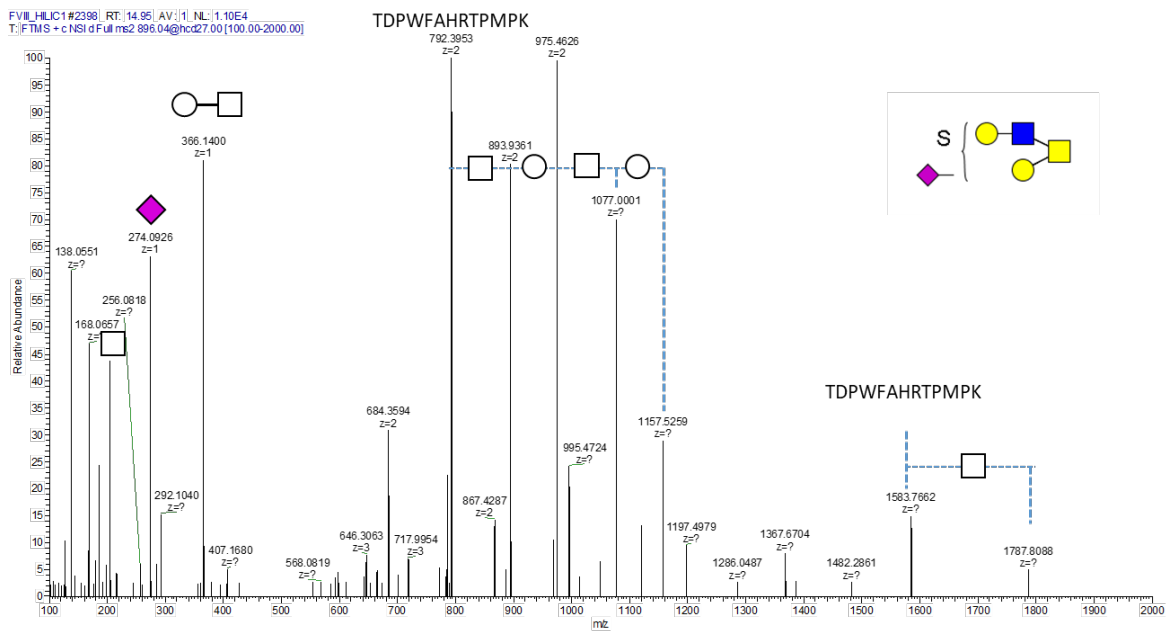
# 24-O

FVII\_HILIC1 #1976 RT: 13.17 AV: 1 NL: 3.31E3  
 T: FTMS + c NSI d Full ms2 991.10@hcd27.00 [100.00-2000.00]



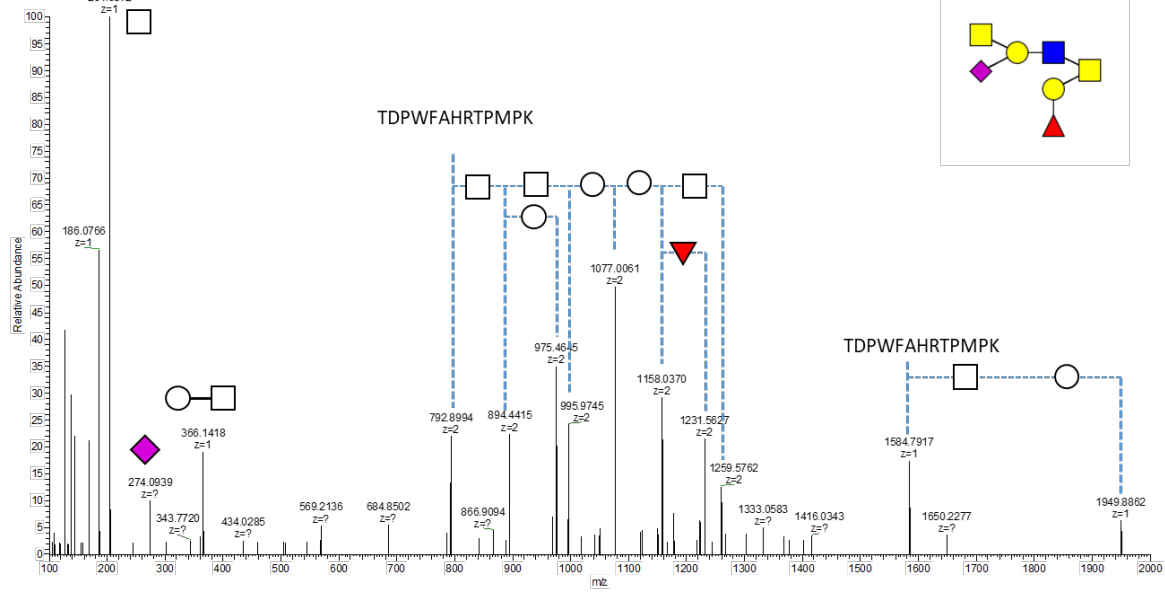
# 25-O

FVII\_HILIC1 #2398 RT: 14.95 AV: 1 NL: 1.10E4  
 T: FTMS + c NSI d Full ms2 896.04@hcd27.00 [100.00-2000.00]



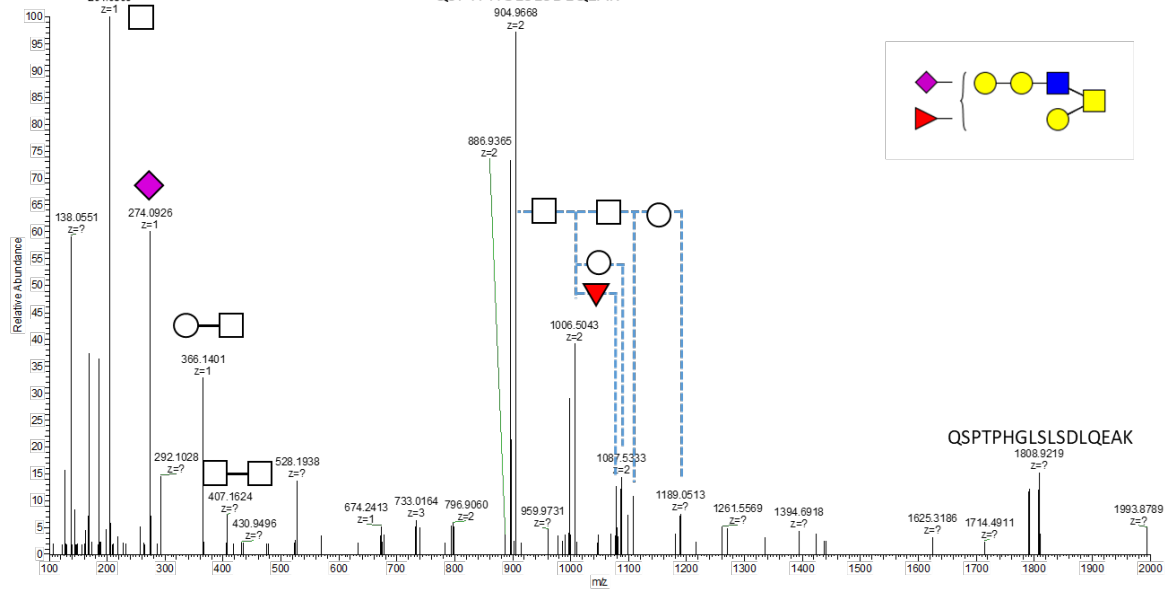
# 26-O

FVII\_HILIC1#1991 | RT: 13.23 | AV: 1 | NL: 1.56E4  
 T: FTMS + c NSI: Full ms2 985.10@hcd27.00[100.00-2000.00]

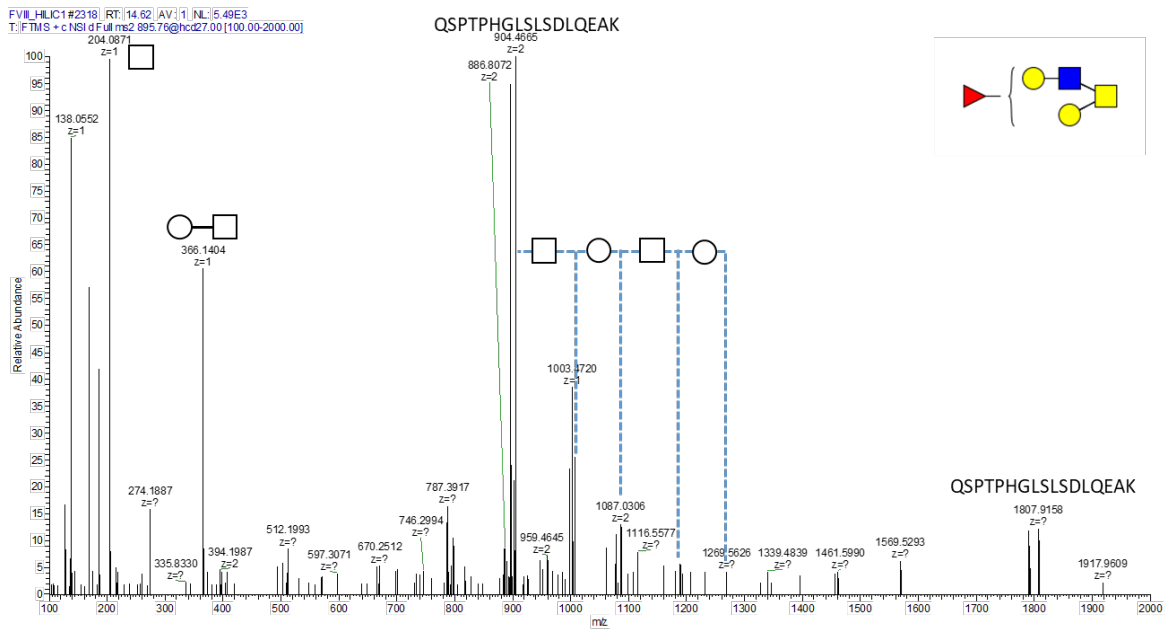


# 27-O

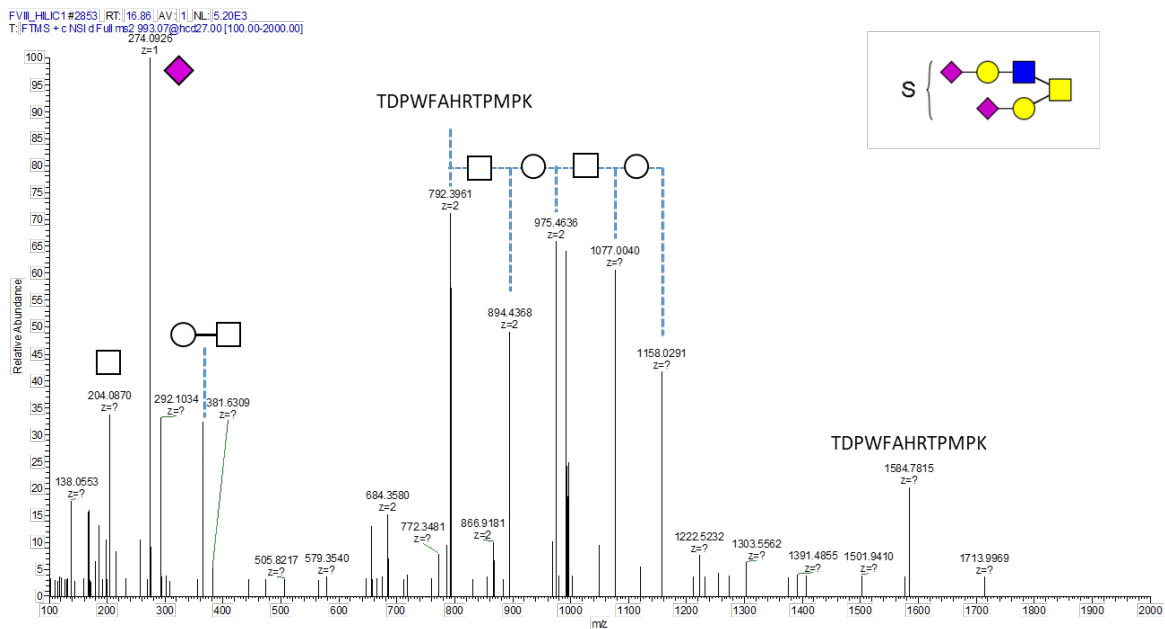
FVII\_HILIC1#2618 | RT: 15.88 | AV: 1 | NL: 1.17E4  
 T: FTMS + c NSI: Full ms2 1046.81@hcd27.00[100.00-2000.00]



# 28-O

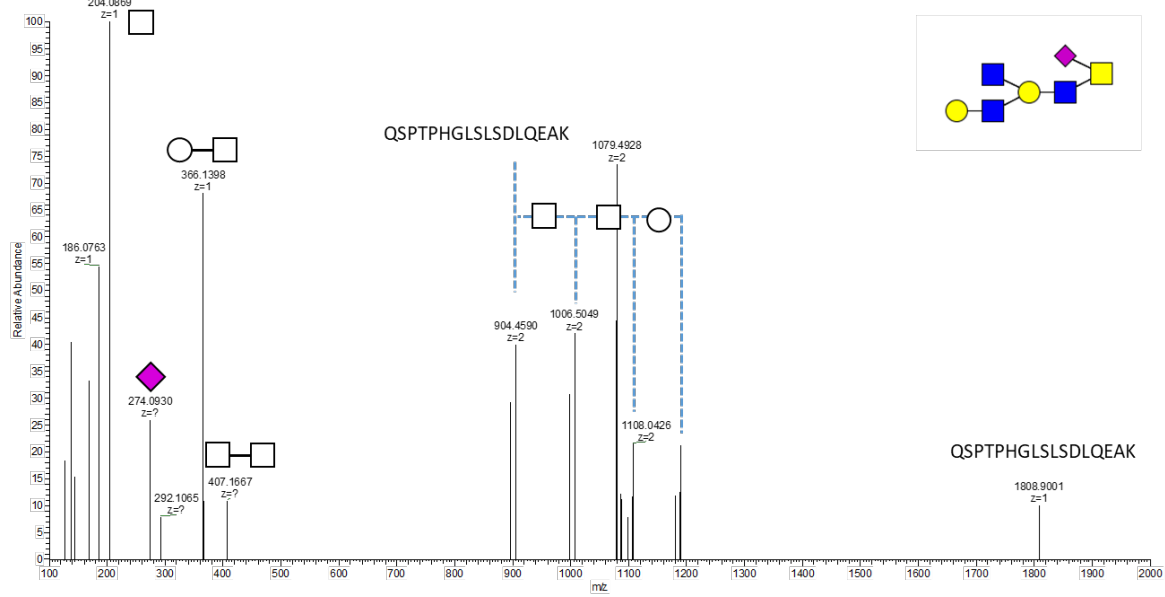


# 29-O



# 30-O

FVIL\_HILIC1#2589 | RT: 15.66 | AV: 1 | NL: 5.60E3  
 T: FTMS + c NSI of Full ms2 1079.62@hcd27.00[100.00-2000.00]



# 31-O

FVIL\_HILIC1#2651 | RT: 16.02 | AV: 1 | NL: 2.09E4  
 T: FTMS + c NSI of Full ms2 1050.48@hcd27.00[100.00-2000.00]

