

ADDITIONAL FILE 1

PACVr: Plastome Assembly Coverage Visualization in R

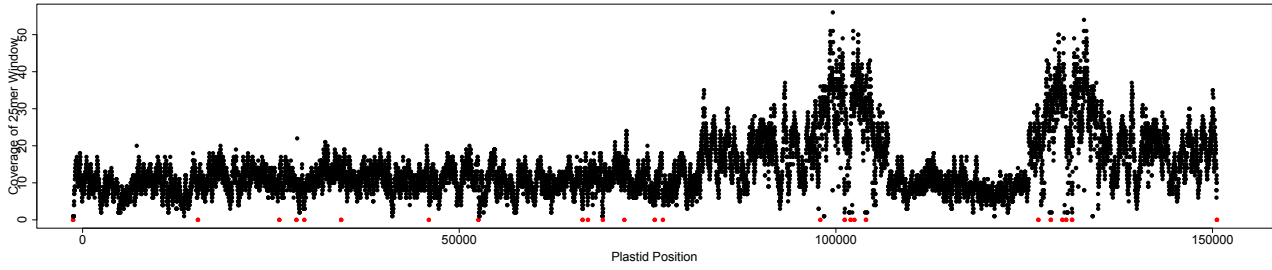
Michael Gruenstaeudl^{1*}Nils Jenke²

¹ Institut für Biologie, Freie Universität Berlin, 14195 Berlin, Germany ² Institut für Bioinformatik, Freie Universität Berlin, 14195 Berlin, Germany

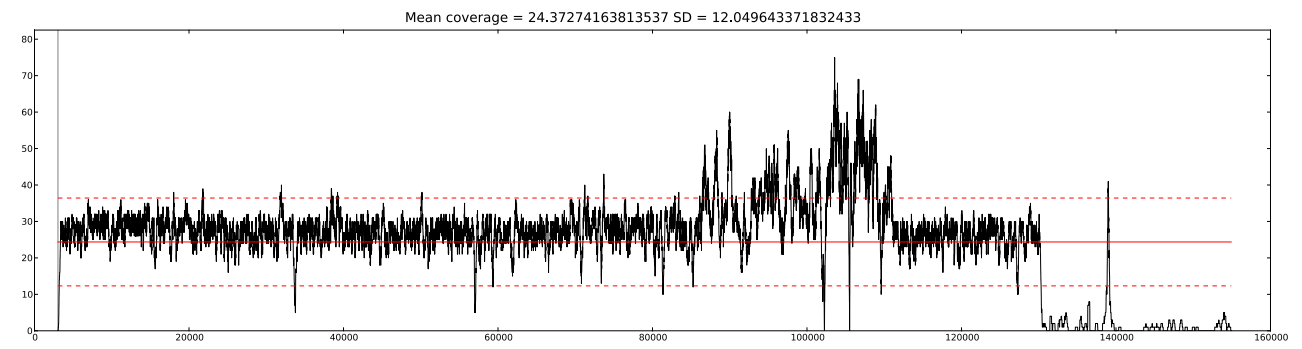
* m.gruenstaeudl@fu-berlin.de

Fig. S1 Visualizations of coverage depth of the plastid genome of *Archidasyphyllum excelsum* (GenBank accession MH899017) as generated by (a) FastPlast, (b) IOGA, and (c) Circleator. For easier viewing, the size of the individual data points was reduced in the visualization of FastPlast, and the tick mark at 160 kb was removed in the visualization of Circleator.

(a)



(b)



(c)

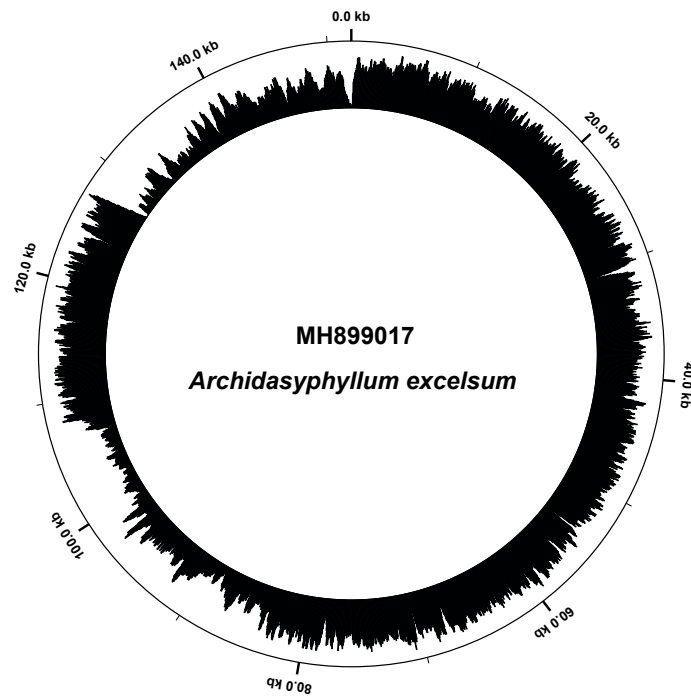


Fig. S2 Visualization of coverage depth and IR equality of the plastid genome of *Archidasyphyllum excelsum* (GenBank accession MH899017) as generated via PACVr.

