

Supplementary Figure 1A:

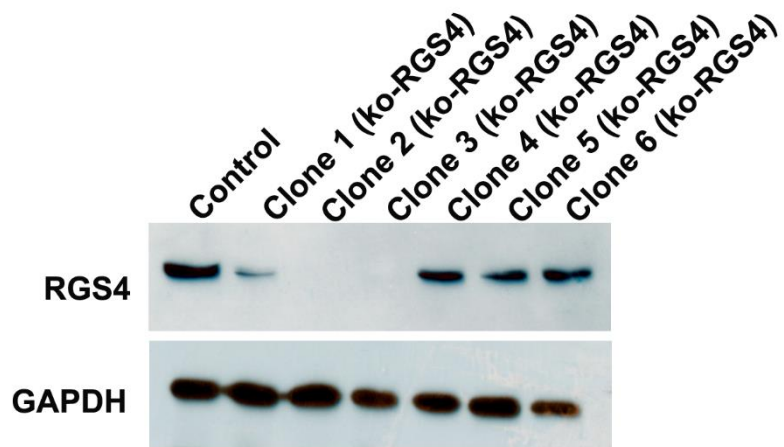


Figure S1. Clonal selection of RGS4 knockouts. GSC20 cells were transfected with all-in-one RGS4 plasmids obtained from Genecopoea. After 72h of transfection, the cells were selected using 1mg/ml of neomycin. Six neomycin selected single cell clones were expanded evaluated by using the immunoblot analysis to assess the knockout of RGS4. Colonies 2 and 3 showed a complete knockout of RGS4 when compared to other colonies. GAPDH was used as a loading control.