

Figure S1 The representative Chromatogram of CmR1-CmR12. The major terpenoids were labeled with 1-20. 1. α -pinene, 2. α -fenchene, 3. β -pinene, 4. para-cymene, 5. silphinene, 6. α -longipinene, 7. modephene, 8. α -isocomene, 9. β -elemene, 10. β -isocomene, 11. (E)- β -caryophyllene, 12. (E)- β -farnesene, 13. β -copaene, 14. δ -bisabolene, 15. neollocimene, 16. α -zingberene, 17. β -bisabolene, 18. β -sesquiphellandrene, 19. γ -Costol, 20. unidentified diterpene. N1-N7 represent the non-terpenoid compounds. N1. 3a,9b-Dimethyl-1,2,3a,4,5,9b-hexahydrocyclopenta[a]naphthalen-3-one, N2. 1,6-Dioxaspiro[4.4]non-3-ene, 2-(2,4-hexadiynylidene)- N3. (Z)-2-(Hexa-2,4-diyn-1-ylidene)-1,6-dioxaspiro[4.4]non-3-ene, N4. Azulen-2-ol, 1,4-dimethyl-7-(1-methylethyl)-, N5. Lovastatin, N6. (E)-2-(Hepta-2,4-diyn-1-ylidene)-1,6-dioxaspiro[4.4]non-3-ene, N7. 1-(4-(Isobutyryloxy)-3-methoxyphenyl)allyl 2-methylbutanoate

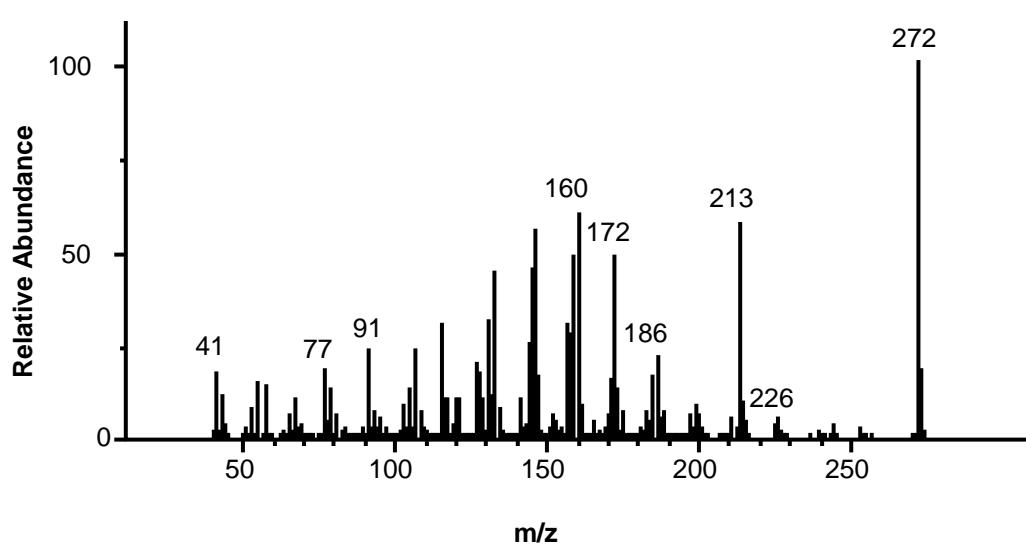


Figure S2 Mass spectrum of the unidentified diterpene from the root extract in CmR5.