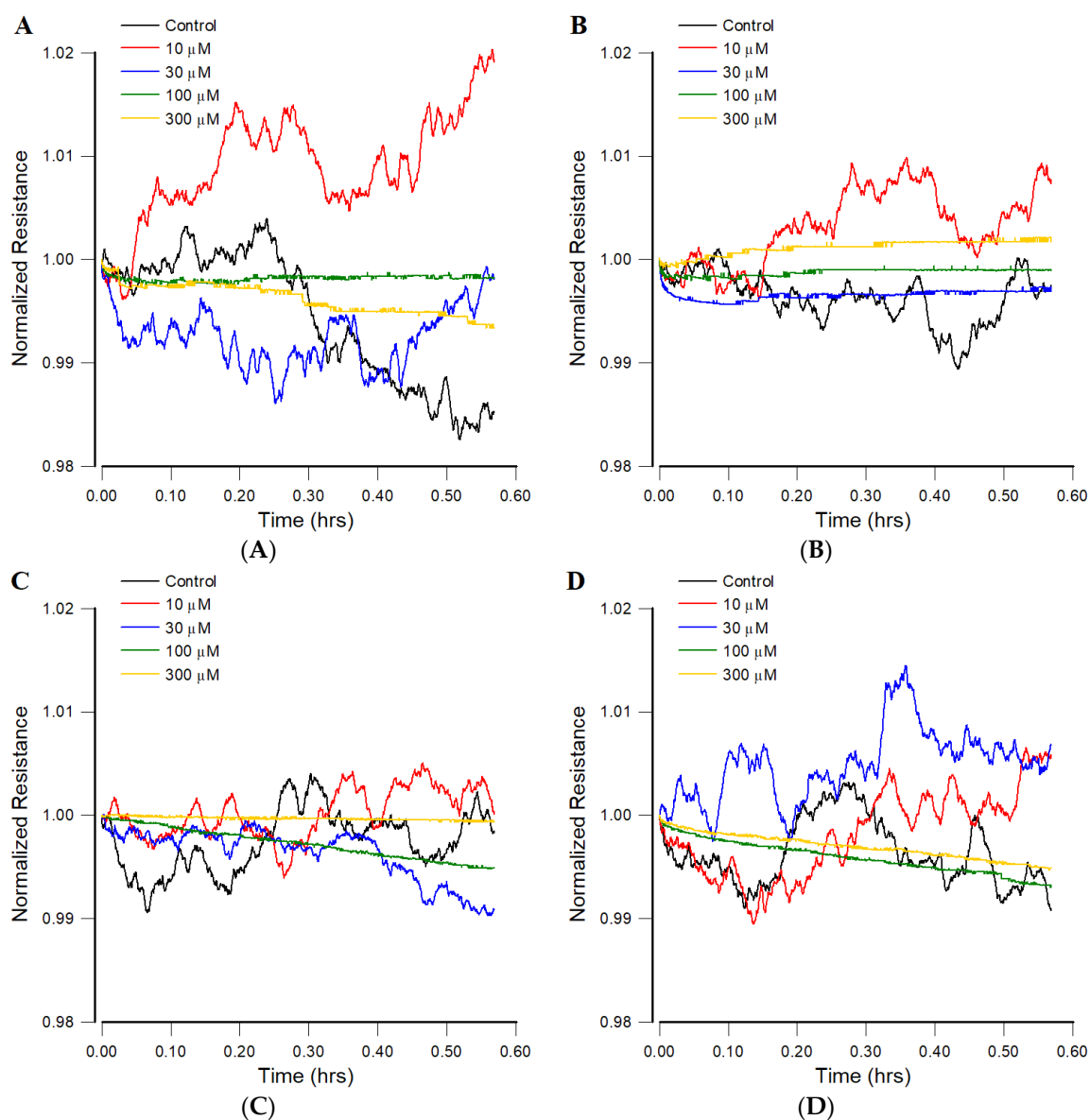


## Supplementary Materials

# Electrochemical Assessment of Anticancer Compounds on the Human Tongue Squamous Carcinoma Cells



**Figure S1.** Normalized resistance time course recorded 24 h after the addition of various concentrations of (A) andrographolide, (B) CBD, (C) 5-FU, and (D) cisplatin to confluent SCC-25 cells. The final concentrations of each compound were 10  $\mu\text{M}$  (red), 30  $\mu\text{M}$  (blue), 100  $\mu\text{M}$  (green), 300  $\mu\text{M}$  (yellow), and control (black). Each curve consists of 2048 data points taken at 1-s sampling time. Here the total 2048 data points in each curve were used to calculate its Var32 value.