

Figure S1: The age-standardised point prevalence of neck pain in 2017 for 21 Global Burden of Disease regions by sex. (Generated from data available from <http://ghdx.healthdata.org/gbd-results-tool>)

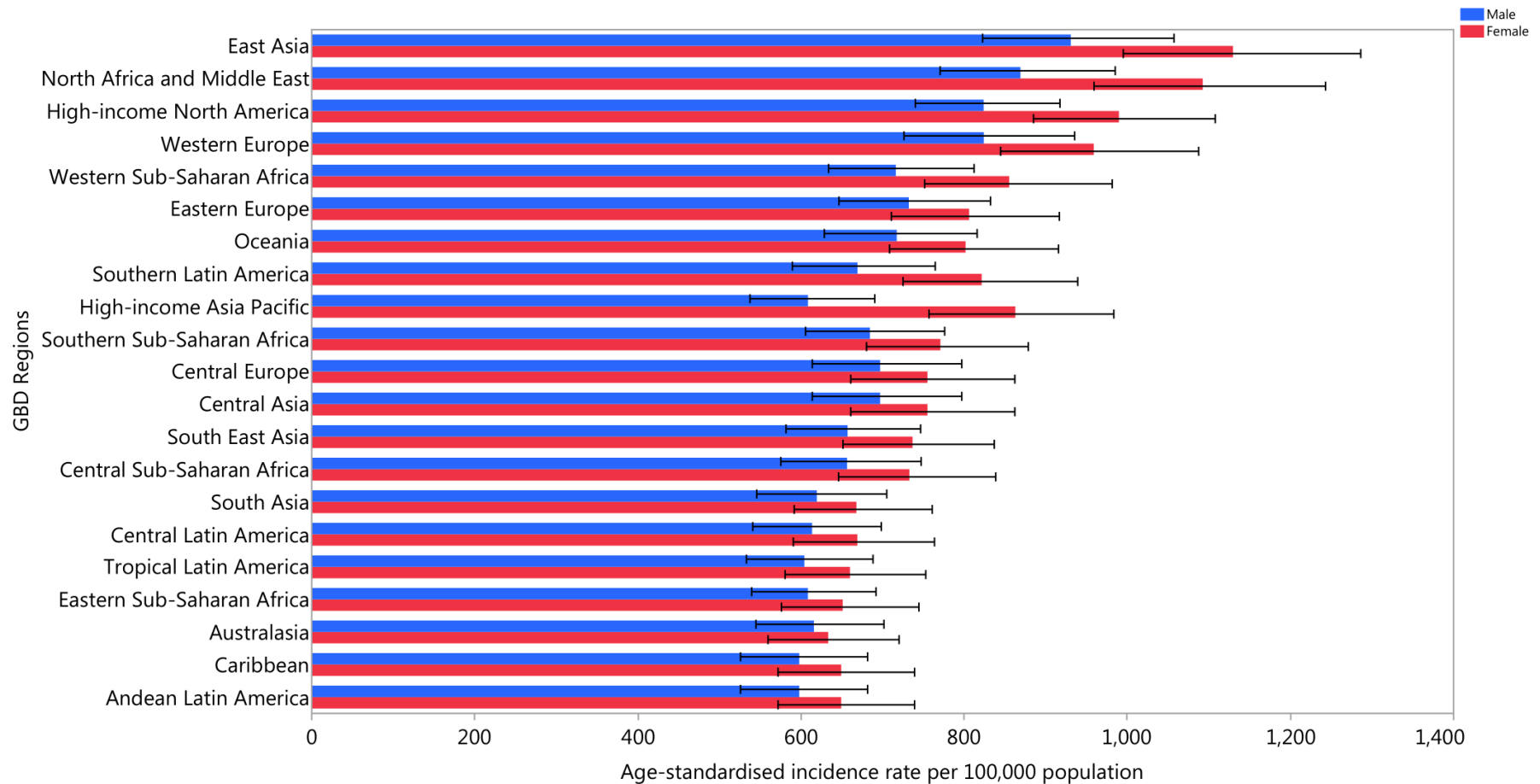


Figure S2: The age-standardised annual incidence rates of neck pain in 2017 for 21 Global Burden of Disease regions by sex. (Generated from data available from <http://ghdx.healthdata.org/gbd-results-tool>)

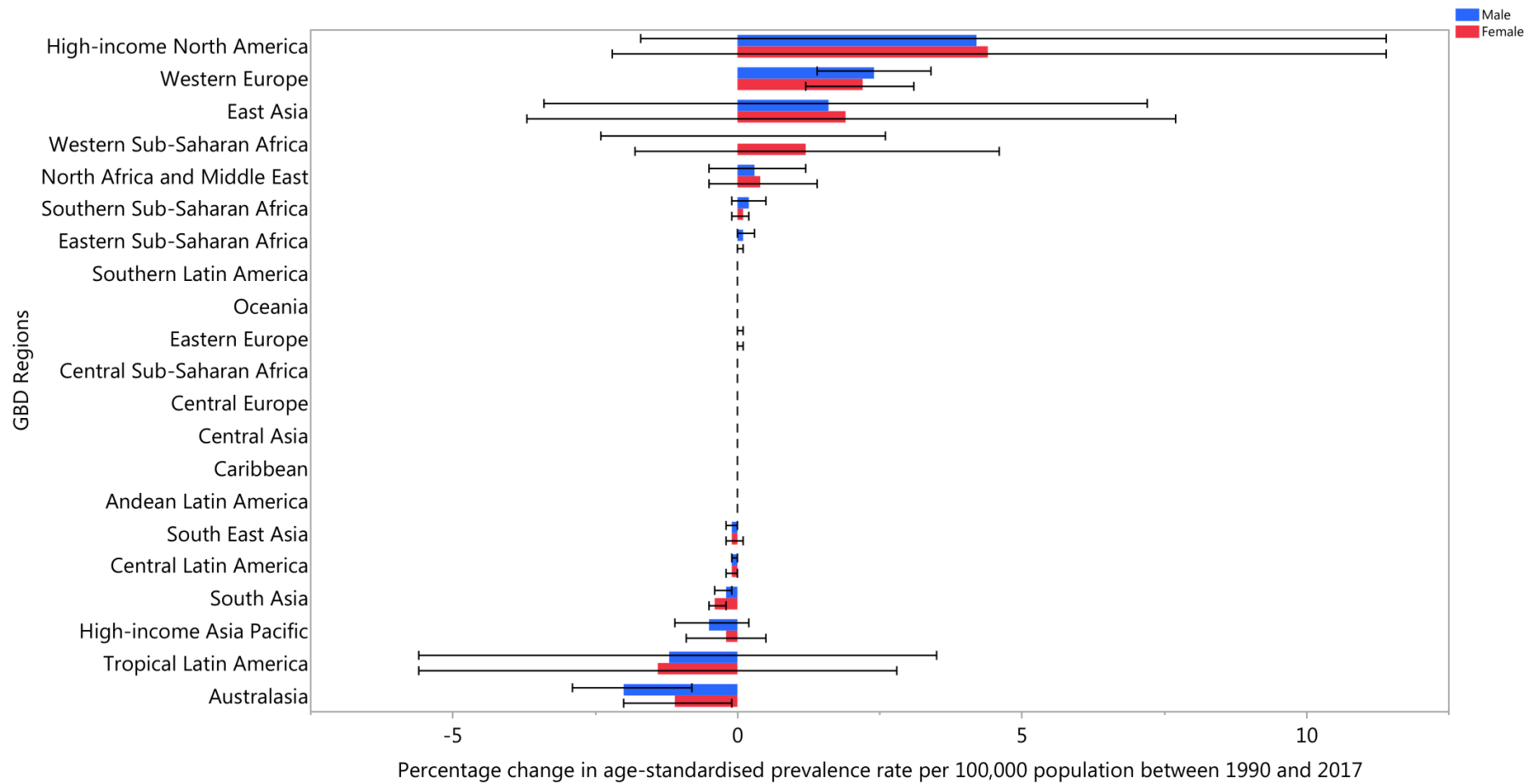


Figure S3: The percentage change in age-standardised point prevalence of neck pain from 1990 to 2017 for 21 Global Burden of Disease regions by sex. (Generated from data available from <http://ghdx.healthdata.org/gbd-results-tool>)

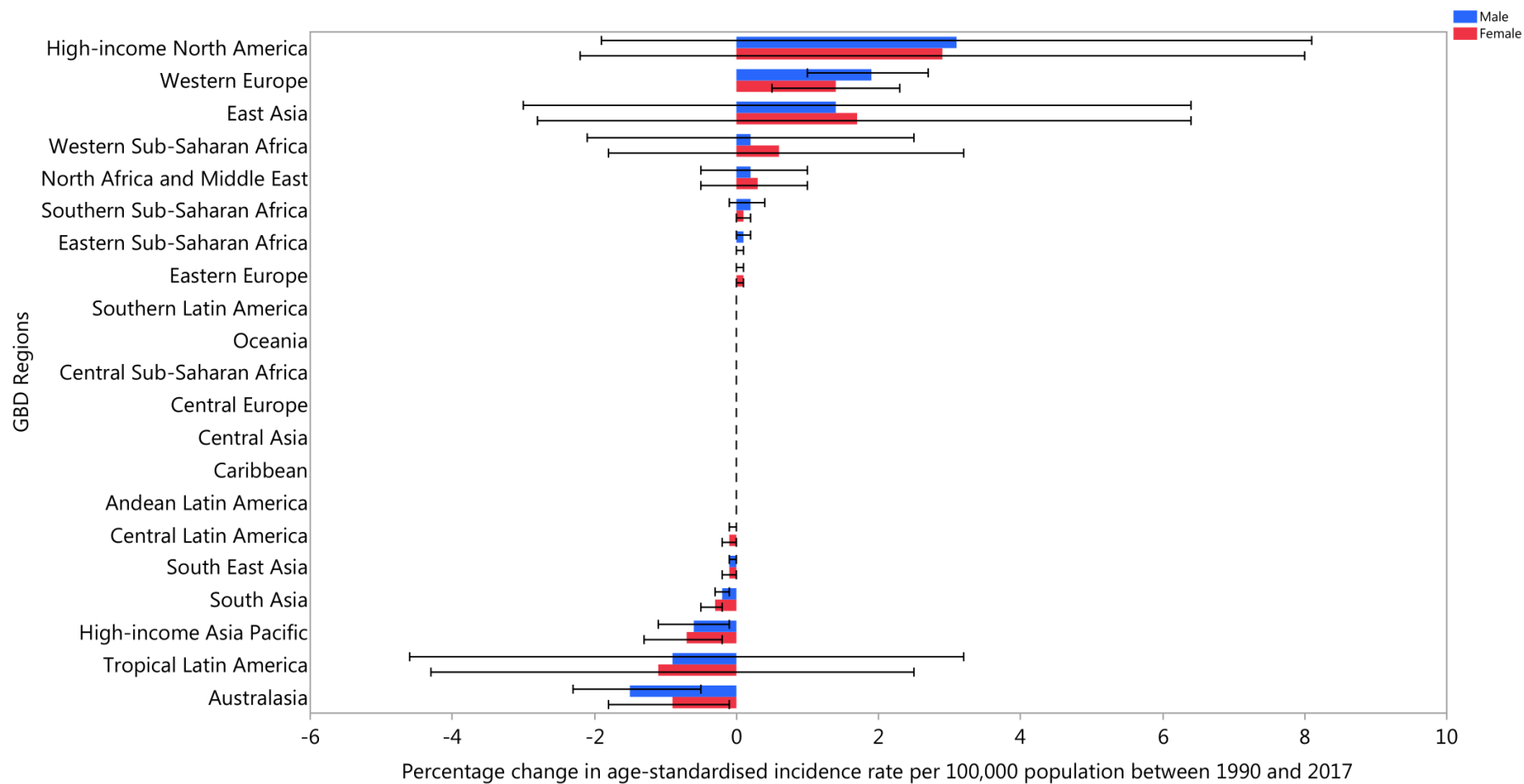


Figure S4: The percentage change in age-standardised annual incidence rates of neck pain from 1990 to 2017 for 21 Global Burden of Disease regions by sex. (Generated from data available from <http://ghdx.healthdata.org/gbd-results-tool>)

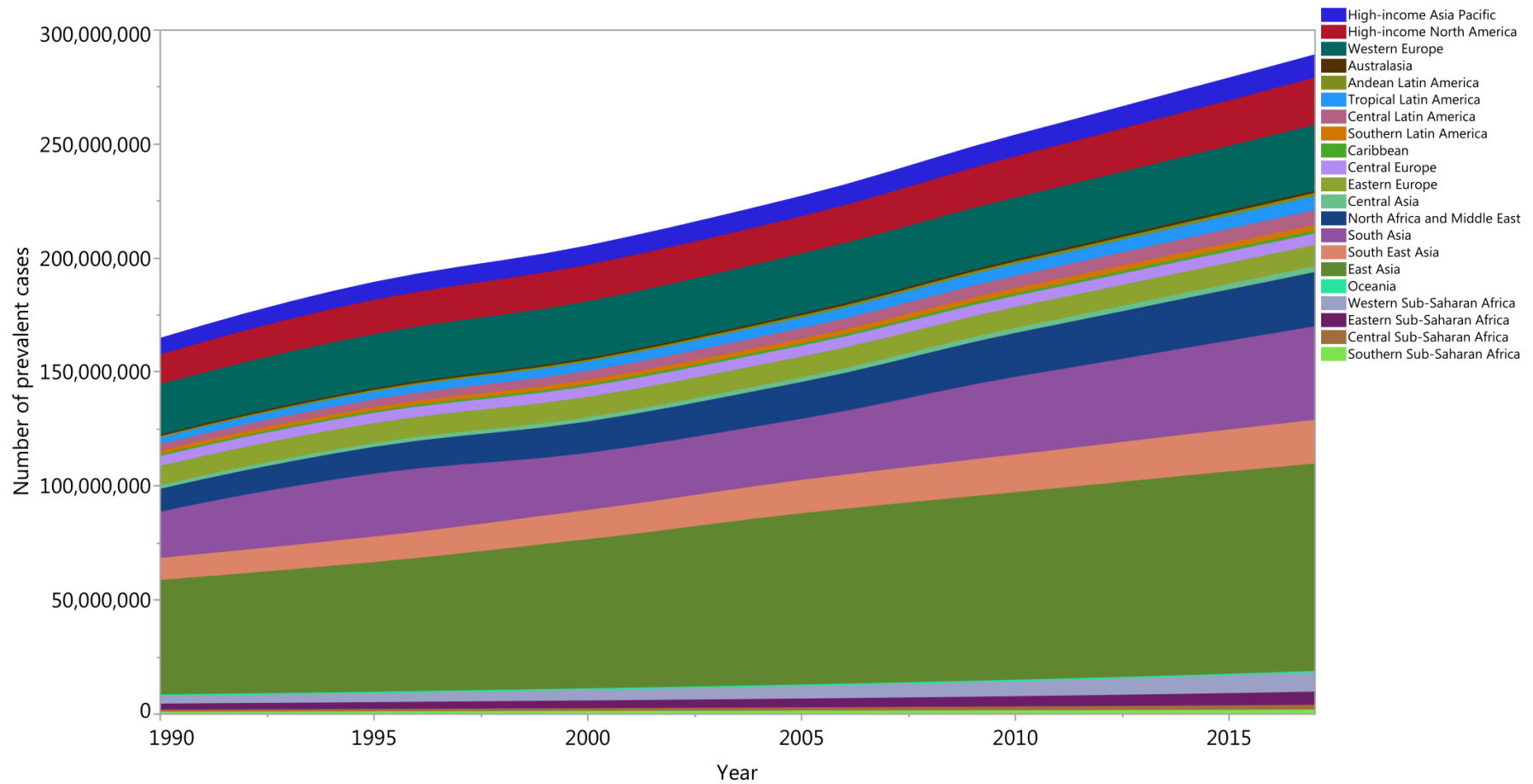


Figure S5: Number of prevalent cases of neck pain from 1990 to 2017 for 21 Global Burden of Disease regions. (Generated from data available from <http://ghdx.healthdata.org/gbd-results-tool>)

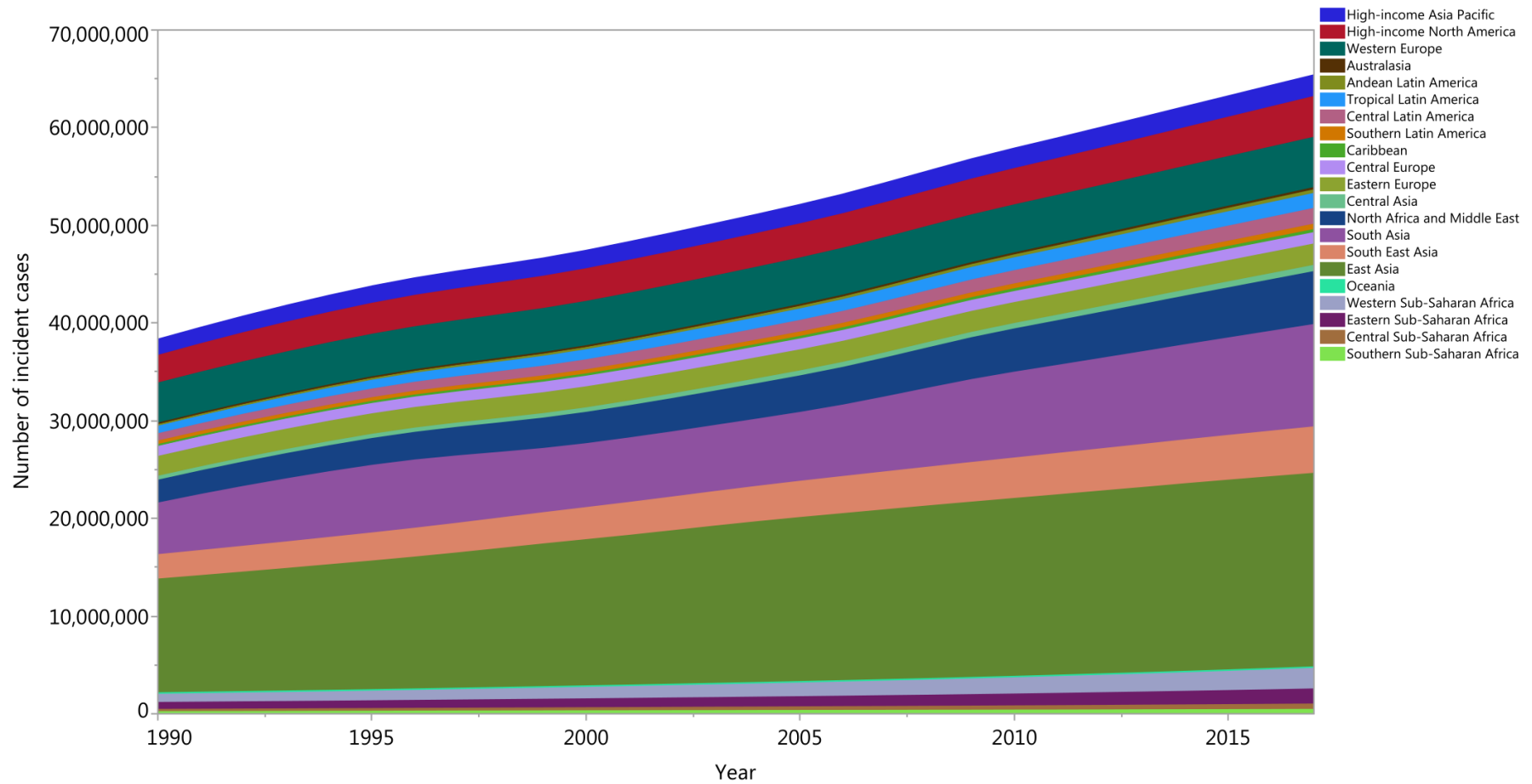


Figure S6: Number of incident cases of neck pain from 1990 to 2017 for 21 Global Burden of Disease regions. (Generated from data available from <http://ghdx.healthdata.org/gbd-results-tool>)

Age-standardised YLD rate (per 100,000), both sexes, 2017

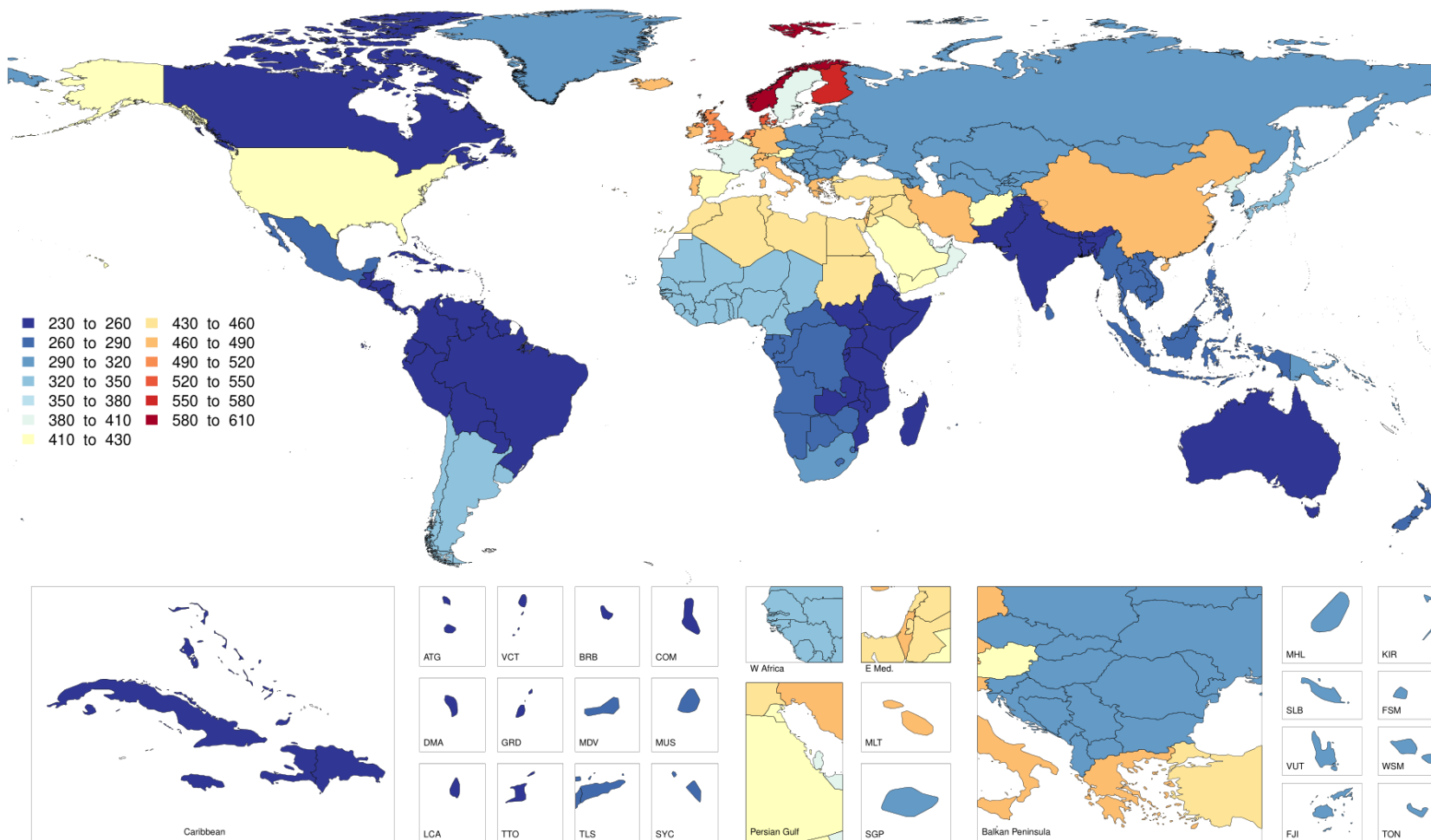


Figure S7: Age-standardised YLD rate of neck pain per 100,000 population in 2017, by country. ATG=Antigua and Barbuda, VCT=Saint Vincent and the Grenadines, BRB=Barbados, COM=Comoros, DMA=Dominica, GRD=Grenada, MDV=Maldives, MUS=Mauritius, LCA=Saint Lucia, TTO=Trinidad and Tobago, TLS=Timor-Leste, SYC=Seychelles, MLT=Malta, SGP=Singapore, MHL=Marshall Islands, KIR=Kiribati, SLB=Solomon Islands, FSM=Federated States of Micronesia, VUT=Vanuatu, WSM=Samoa, FJI=Fiji, TON=Tonga. YLD=years lived with disability. (Generated from data available from <http://ghdx.healthdata.org/gbd-results-tool>)

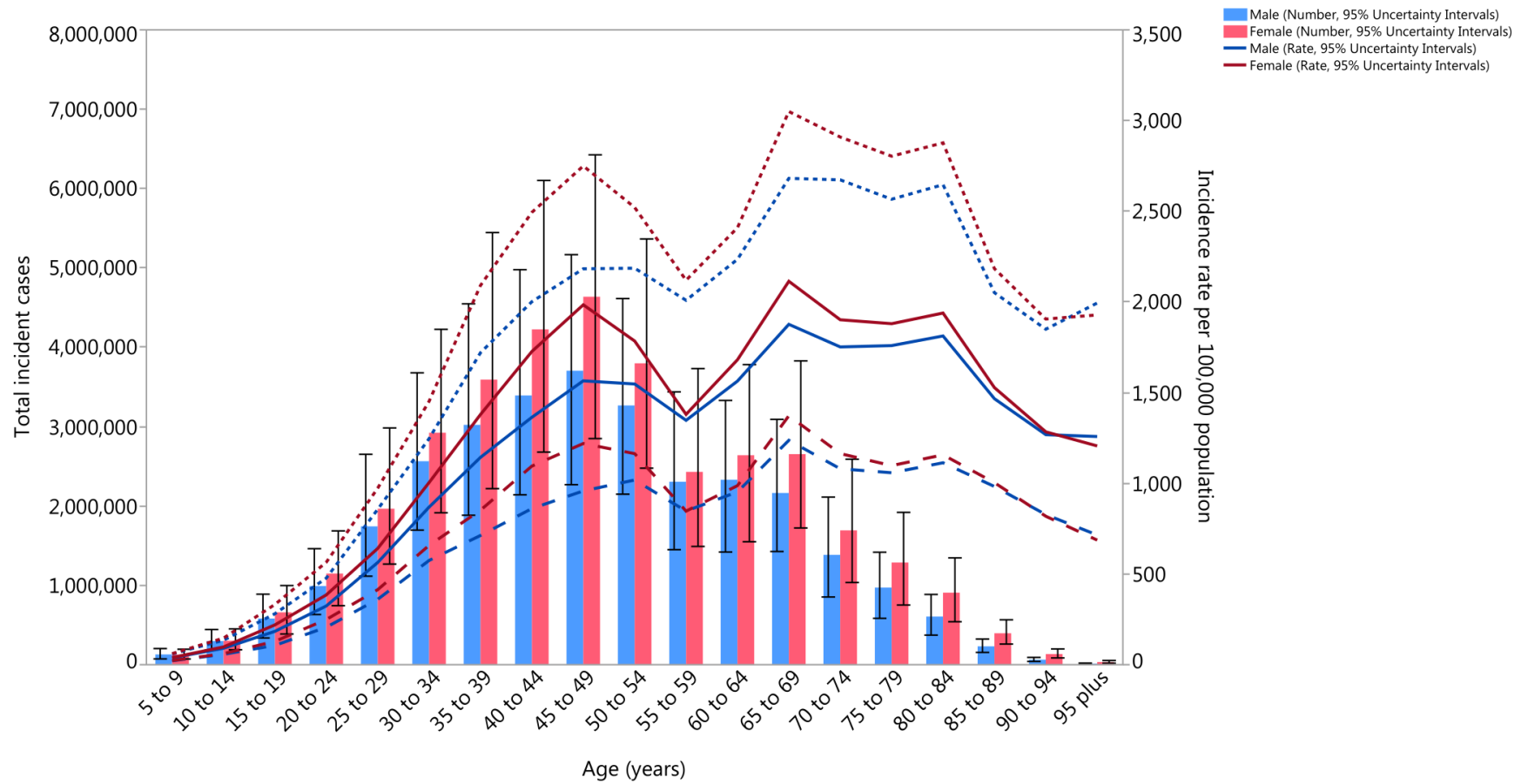


Figure S8: Global number of incident cases and age-standardised annual incidence rate of neck pain per 100,000 population by age and sex, 2017; Dotted and dashed lines indicate 95% upper and lower uncertainty intervals, respectively. (Generated from data available from <http://ghdx.healthdata.org/gbd-results-tool>)

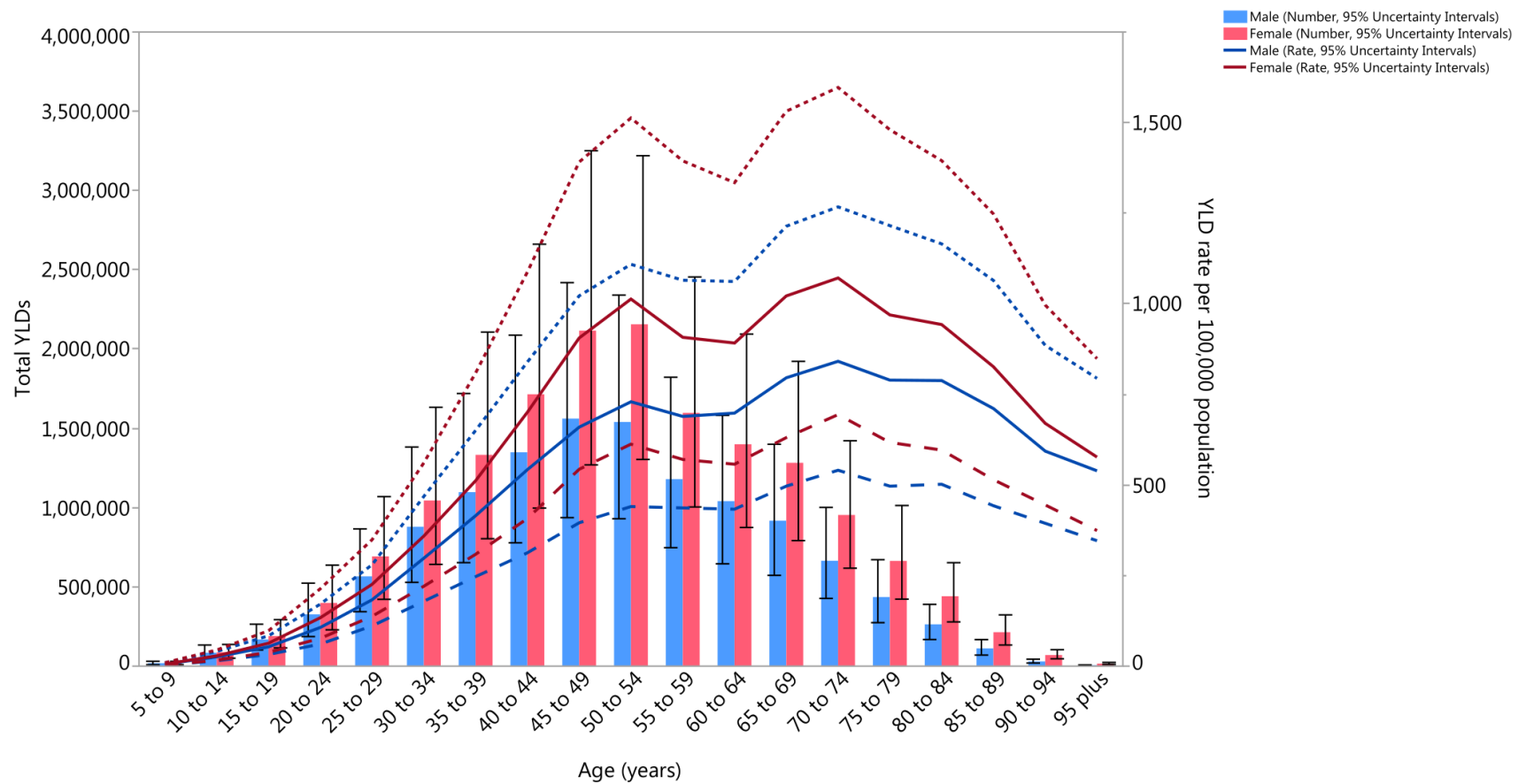


Figure S9: Global number of YLDs and age-standardised YLD rate of neck pain per 100,000 population by age and sex, 2017; Dotted and dashed lines indicate 95% upper and lower uncertainty intervals, respectively. YLD=years lived with disability. (Generated from data available from <http://ghdx.healthdata.org/gbd-results-tool>)