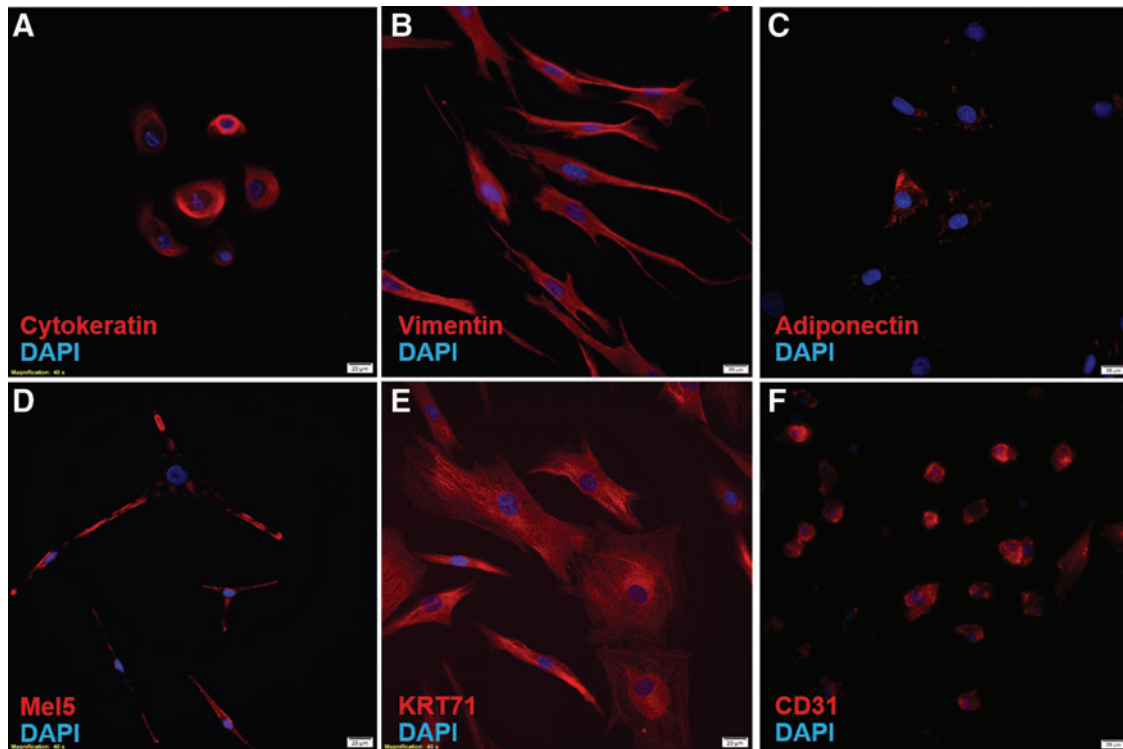


Supplementary Data



SUPPLEMENTARY FIG. S1. Representative immunocytochemistry image of cells before bioprinting. Immunofluorescent images of (A) keratinocytes (Pan-Cytokeratin; 40× magnification; scale bar 20 μm), (B) fibroblasts (Vimentin; 40× magnification; scale bar 20 μm), (C) adipocytes (Adiponectin; 40× magnification; scale bar 20 μm), (D) melanocytes (Mel5; 40× magnification; scale bar 20 μm), (E) follicular dermal papilla cells (KRT71; 40× magnification; scale bar 20 μm), and (F) human dermal microvascular endothelial cells (CD31; 40× magnification; scale bar 20 μm).