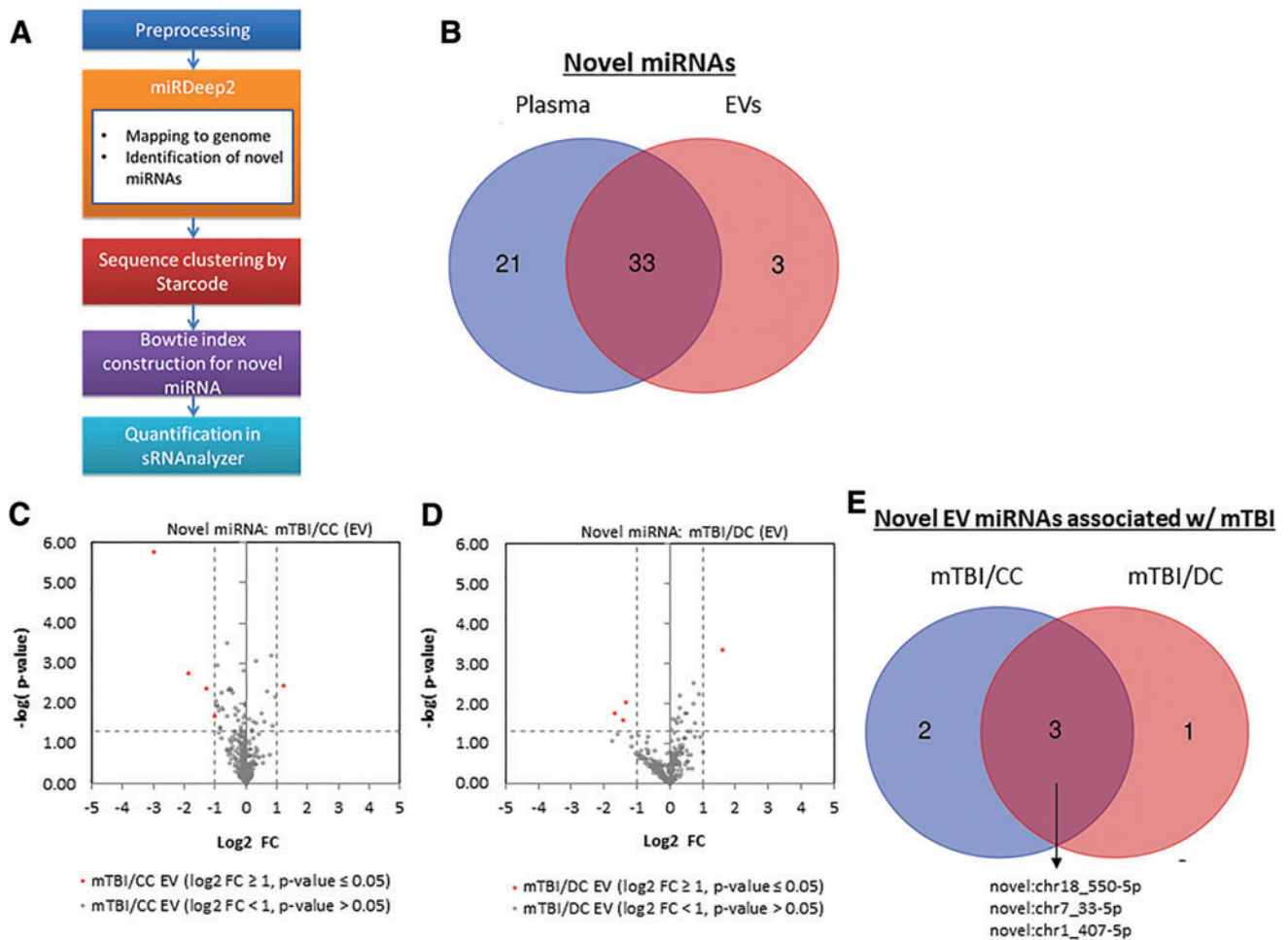


Supplementary Data



SUPPLEMENTARY FIG. S1. Novel microRNAs (miRNAs) associated with traumatic brain injury (TBI) in plasma and extracellular vesicles (EVs). **(A)** Overview of novel miRNA mapping procedure. **(B)** Venn diagram of number of novel miRNAs identified from whole plasma and plasma EVs. **(C, D)** Volcano plots showing novel plasma EV miRNA log₂ fold change (log₂FC) versus *p* value between **(C)** chronic mild TBI (mTBI) subjects and community controls (CC), and **(D)** chronic mTBI subjects and deployed controls (DC). **(E)** Overlap between novel plasma EV miRNAs that show concentration differences in **C** and **D**. For volcano plots, gray unfilled circles represent miRNAs with a *p* value >0.05, and red circles represent miRNAs with a *p* < 0.05, and a log₂FC > ±1 (fold change >2). CC, community controls; DC, deployed controls; MTBI, mild traumatic brain injury group.