

**Appendix**  
**Clinical Characteristics, Associated Factors, and Predicting COVID-19 Mortality Risk:**  
**A Retrospective Study in Wuhan, China**  
**Yu et al.**

**Appendix Table 1.** Associations (OR [95% CI]) of PCT and LY With COVID-19 Mortality

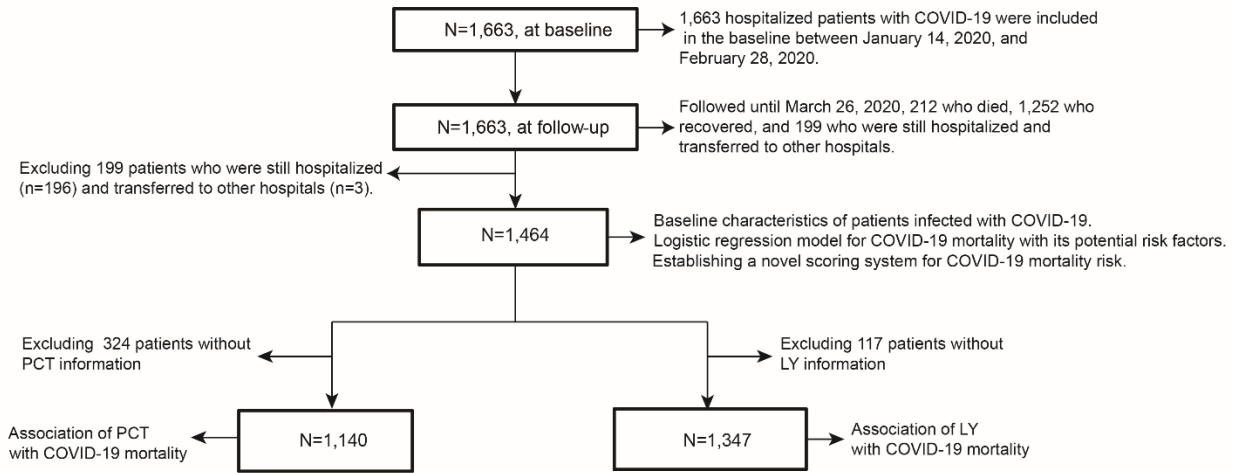
Variable	Tertile of PCT and LY			Per SD of PCT and LY	<i>p</i> for trend
	T1	T2	T3		
PCT, ng/ml	<0.04	0.04–0.07	≥0.07		
N case/n total	10/308 (3.3)	40/436 (9.2)	95/396 (24.0)	Per SD of PCT increase	
Unadjusted	ref	3.01 (1.48, 6.12)	9.41 (4.81, 18.40)	4.27 (2.56, 7.11)	<b>&lt;0.0001</b>
Model 1	ref	2.27 (1.11, 4.66)	6.90 (3.49, 13.65)	3.65 (2.25, 5.90)	<b>&lt;0.0001</b>
Model 2	ref	2.31 (1.12, 4.77)	6.30 (3.16, 12.56)	3.39 (2.10, 5.46)	<b>&lt;0.0001</b>
Model 3a	ref	2.94 (1.27, 6.80)	8.25 (3.64, 18.69)	3.91 (2.22, 6.91)	<b>&lt;0.0001</b>
LY, ×10 <sup>9</sup> /L	<0.88	0.88–1.32	≥1.32		
N case/n total	74/445 (16.6)	55/441 (12.5)	40/461 (8.7)	Per SD of LY decrease	
Unadjusted	2.10 (1.39, 3.16)	1.50 (0.98, 2.31)	ref	1.45 (1.21, 1.74)	<b>0.0003</b>
Model 1	1.75 (1.15, 2.67)	1.35 (0.87, 2.10)	ref	1.34 (1.11, 1.61)	<b>0.009</b>
Model 2	1.65 (1.08, 2.53)	1.29 (0.83, 2.02)	ref	1.31 (1.09, 1.58)	<b>0.02</b>
Model 3b	1.64 (0.95, 2.84)	1.39 (0.79, 2.43)	ref	1.31 (1.03, 1.67)	0.08

*Notes:* Boldface indicates statistical significance ( $p < 0.05$ ). Model 1: Adjusted for sex (female, male), age (<65, ≥65, years). Model 2: Additional adjustment for history of hypertension (yes/no) and diabetes (yes/no). Model 3a: Additional adjustment for lymphopenia (<1.1, ≥1.1, ×10<sup>9</sup>/L), increased alanine aminotransferase (<40, ≥41, U/L), increased lactate dehydrogenase (<214, ≥214, U/L), and increased D-dimer (<0.5, ≥0.5, mg/L). Model 3b: Additional adjustment for increased alanine aminotransferase (<40, ≥41, U/L), increased lactate dehydrogenase (<214, ≥214, U/L), increased D-dimer (<0.5, ≥0.5, mg/L), and increased procalcitonin (<0.05, ≥0.05, ng/ml).

PCT, procalcitonin; LY, lymphocyte count; COVID-19, coronavirus disease 2019.

**Appendix**  
**Clinical Characteristics, Associated Factors, and Predicting COVID-19 Mortality Risk:**  
**A Retrospective Study in Wuhan, China**  
**Yu et al.**

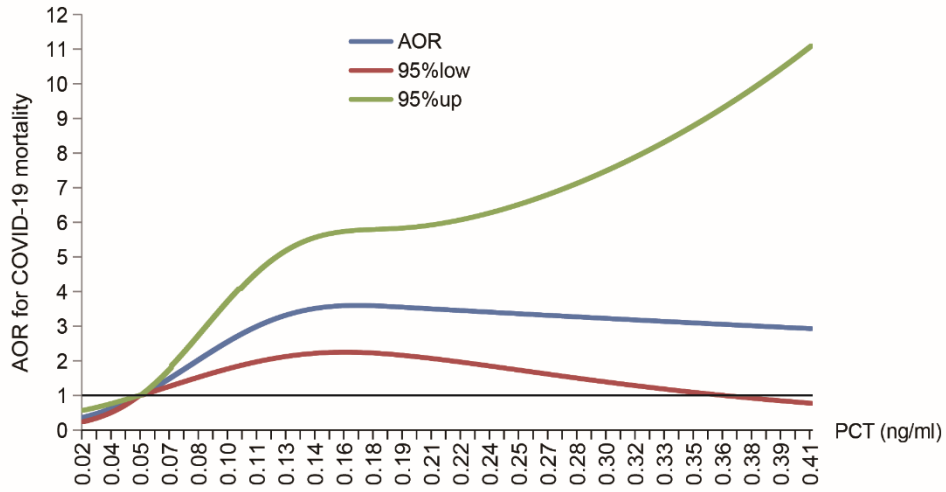
**Appendix Figure 1.** Flow chart of research idea and research object selection.



PCT, procalcitonin; LY, lymphocyte count

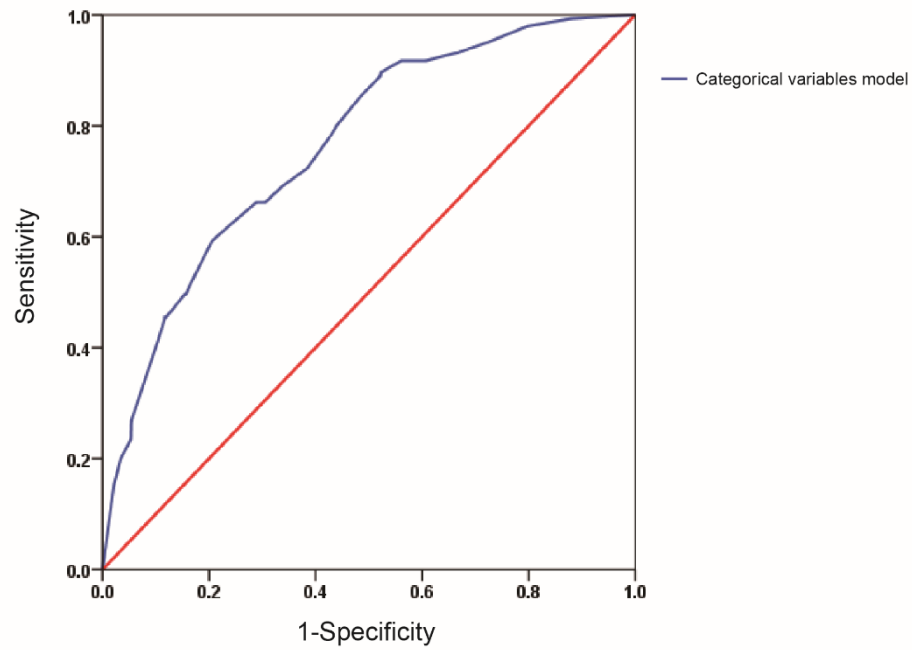
**Appendix**  
**Clinical Characteristics, Associated Factors, and Predicting COVID-19 Mortality Risk:**  
**A Retrospective Study in Wuhan, China**  
**Yu et al.**

**Appendix Figure 2.** AOR and 95% CI for COVID-19 mortality according to procalcitonin (PCT) concentrations.



**Appendix**  
**Clinical Characteristics, Associated Factors, and Predicting COVID-19 Mortality Risk:**  
**A Retrospective Study in Wuhan, China**  
**Yu et al.**

**Appendix Figure 3.** The receiver operating characteristic curves for the prediction of COVID-19 mortality risk.



*Notes:* The areas under the curves (AUC) were 0.765 (95% CI=0.725, 0.805) for categorical variables model.