

Journal of Pesticide Science

supplementary materials

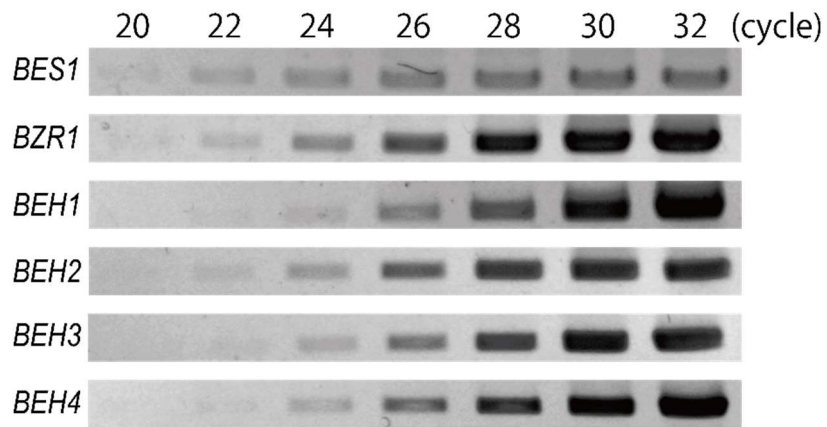
DOI:10.1584/jpestics.D20-001

Expression Profiles of Four *BES1/BZR1* Homologous Genes Encoding bHLH Transcription Factors in *Arabidopsis*

Yui OTANI, Yusuke TOMONAGA, Kenya TOKUSHIGE, Miyu KAMIMURA,
Azusa SASAKI, Yasushi NAKAMURA, Takako NAKAMURA,
Tomoaki MATSUO and Shigehisa OKAMOTO

Pesticide Science Society of Japan

<http://pssj2.jp/eng/>



Supplemental Fig. S1: Expression levels of *BES1/BZR1* family members at an early growth stage

Total RNAs prepared from 2-wk wild-type *Arabidopsis* seedlings were subjected to semi-RT-PCR with cycles of 20, 22, 24, 26, 28, 30, and 32 for rough comparison of mRNA levels between six *BES1/BZR1* family members. The PCR products were separated electrophoretically on 0.7% agarose gel and visualized using ethidium bromide. Similar results were obtained from biologically triplicated experiments, one of which is depicted in this figure.

Supplemental Table S1. BRRE, E-box and G-box elements for BR response found in *BEH1* and *BEH2* promoter

gene	element	location from TSS ^{a)}		sequence (5'-3')
		(start)	(end)	
<i>BEH1</i>	E-box L1	-1528	-1523	CAGATG
	E-box L2	-800	-795	CATCTG
	E-box L3	-738	-733	CAAATG
	E-box L4	-604	-599	CACATG
	E-box L5 / G-box L1	-427	-422	CACGTG
	BRRE L1 / G-box L2	-359	-352	caCGTGCG / CACGTGcg
	E-box L6 / G-box L2	-357	-352	CACGTG
	BRRE L2 / G-box L2	-357	-350	caCGTGTG / CACGTGtg
	E-box L7	-181	-176	CAAATG
E-box L8	-29	-24	CAGATG	
<i>BEH2</i>	BRRE L1	-1170	-1165	CGTGCG
	E-box L1 / G-box L1	-1060	-1055	CACGTG
	E-box L2	-887	-882	CATTTG
	E-box L3	-864	-859	CAAATG
	E-box L4	-739	-734	CAGCTG
	BRRE L2 / G-box L2	-692	-685	caCGTGCG / CACGTGcg
	E-box L5 / G-box L2	-690	-685	CACGTG
	BRRE L3	-135	-130	CGTGCG
	E-box L6 / G-box L3	-115	-110	CACGTG
	BRRE L4 / G-box L4	-82	-75	caCGTGTG / CACGTGtg
	E-box L7 / G-box L4	-80	-75	CACGTG
	BRRE L5 / G-box L5	-63	-56	caCGTGTG / CACGTGtg
	E-box L8 / G-box L5	-61	-56	CACGTG
	BRRE L6 / G-box L5	-61	-54	caCGTGTG / CACGTGtg
	E-box L9	-49	-44	CAAATG
BRRE L7	89	94	CGTGCG	

^{a)} TSS; transcription start site