

THE LANCET Oncology

Supplementary appendix

This appendix formed part of the original submission and has been peer reviewed. We post it as supplied by the authors.

This online publication has been corrected. The corrected version first appeared at thelancet.com/oncology on May 4, 2020.

Supplement to: Dinmohamed AG, Visser O, Verhoeven RHA, et al. Fewer cancer diagnoses during the COVID-19 epidemic in the Netherlands. *Lancet Oncol* 2020; published online April 30. [http://dx.doi.org/10.1016/S1470-2045\(20\)30265-5](http://dx.doi.org/10.1016/S1470-2045(20)30265-5).

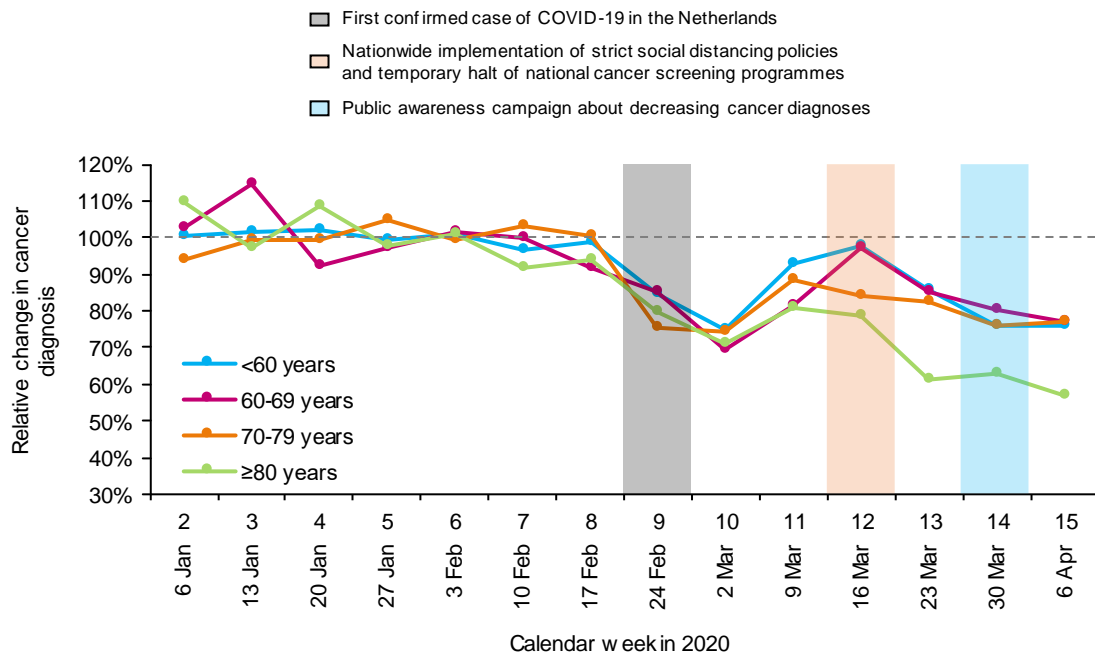
Supplemental figure legends

Supplemental Figure 1. Weekly cancer diagnoses in the Netherlands in the period between January 6, 2020 (calendar week 2) and April 12, 2020 (calendar week 15) according to age at diagnosis. Cancers of the skin are not included in the statistics. The point estimates for the relative change in cancer diagnoses per calendar week are based on the mean total number of cancer diagnoses in the calendar weeks from 2 to 8; that is, the period before the COVID-19 outbreak in the Netherlands. The x-axis shows the calendar week in 2020 that starts on Monday, along with the date for Monday per calendar week. The first calendar week of 2020 was not included in the estimates since this week only included two business days. Of note, the current figures do not, as yet, include cases diagnosed in one hospital that diagnoses and manages cancer patients.

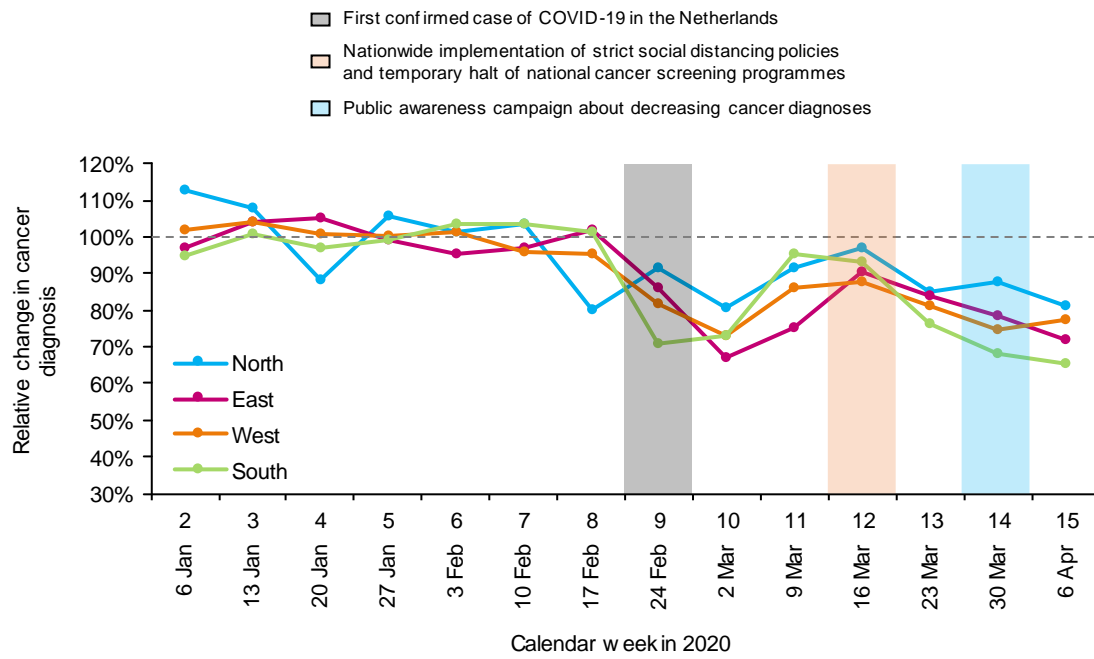
Supplemental Figure 2. Weekly cancer diagnoses in the Netherlands in the period between January 6, 2020 (calendar week 2) and April 12, 2020 (calendar week 15) according to the region of diagnosis. Cancers of the skin are not included in the statistics. The point estimates for the relative change in cancer diagnoses per calendar week are based on the mean total number of cancer diagnoses in the calendar weeks from 2 to 8; that is, the period before the COVID-19 outbreak in the Netherlands. The x-axis shows the calendar week in 2020 that starts on Monday, along with the date for Monday per calendar week. The first calendar week of 2020 was not included in the estimates since this week only included two business days. Of note, the current figures do not, as yet, include cases diagnosed in one hospital that diagnoses and manages cancer patients.

Supplemental Figure 3. Weekly cancer diagnoses in the Netherlands in the period between January 6, 2020 (calendar week 2) and April 12, 2020 (calendar week 15) according to the cancer site. The point estimates for the relative change in cancer diagnoses per calendar week are based on the mean total number of cancer diagnoses in the calendar weeks from 2 to 8; that is, the period before the COVID-19 outbreak in the Netherlands. The x-axis shows the calendar week in 2020 that starts on Monday, along with the date for Monday per calendar week. The first calendar week of 2020 was not included in the estimates since this week only included two business days. Of note, the current figures do not, as yet, include cases diagnosed in one hospital that diagnoses and manages cancer patients.

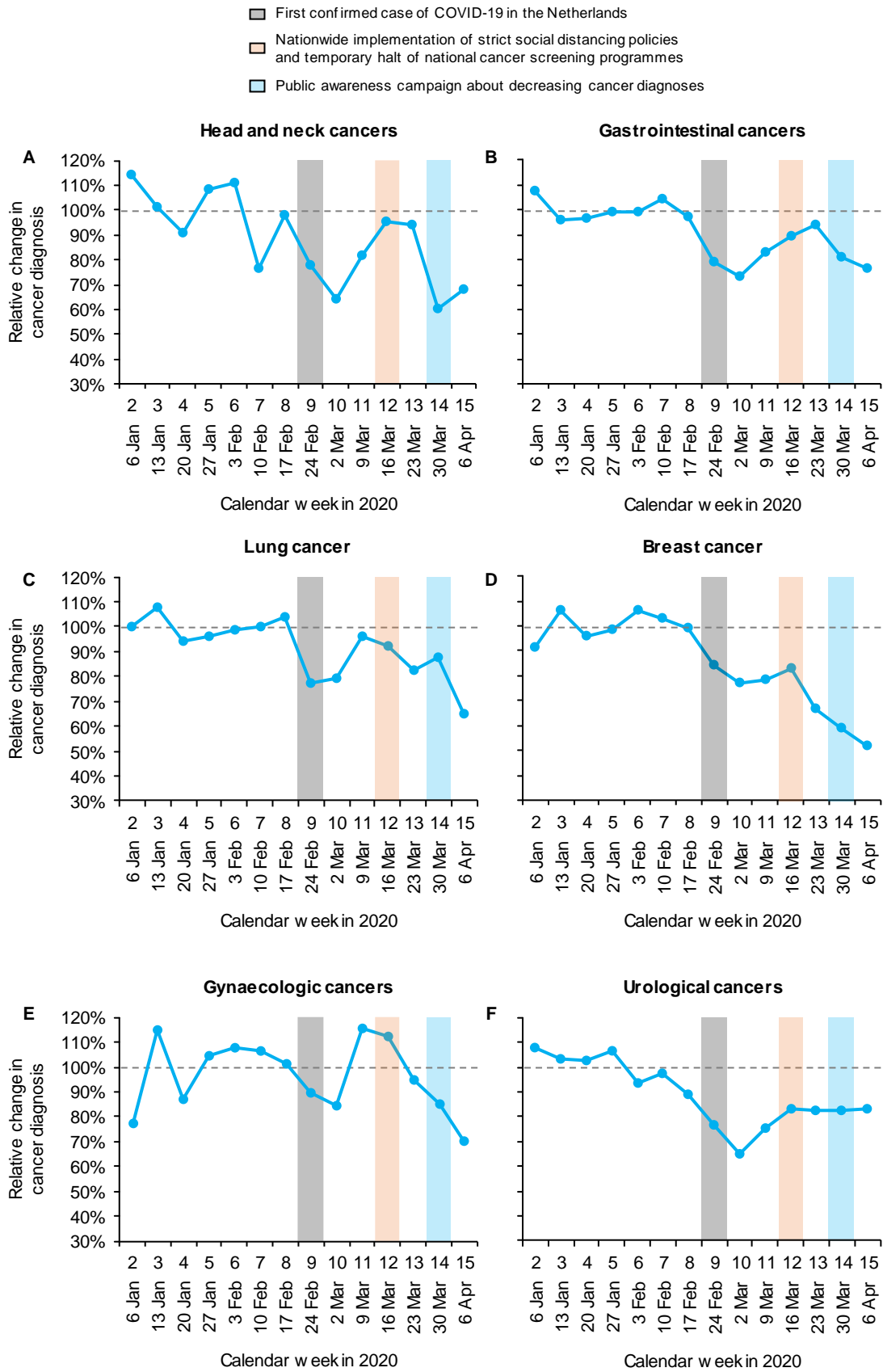
Supplemental Figure 1



Supplemental Figure 2



Supplemental Figure 3



Supplemental Figure 3 – continued

