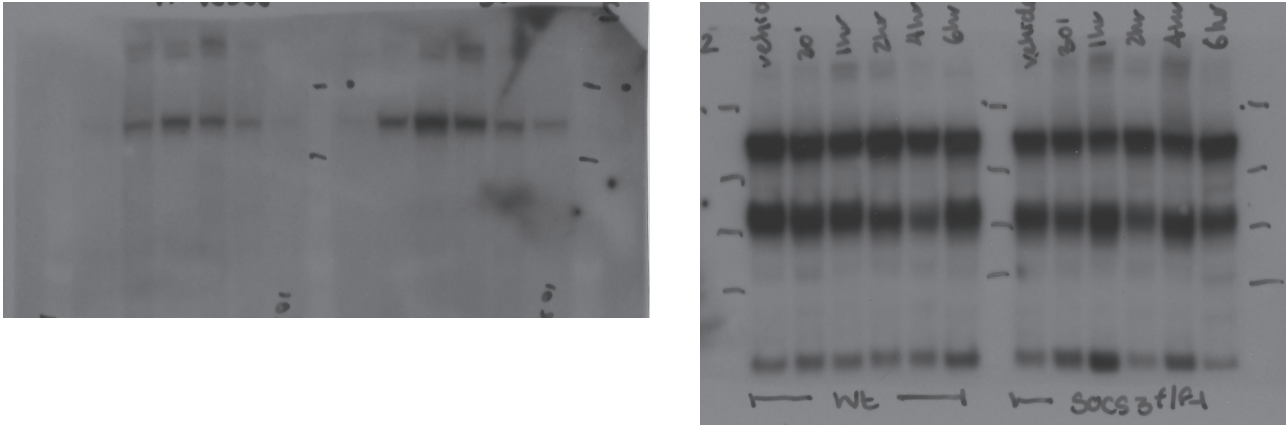


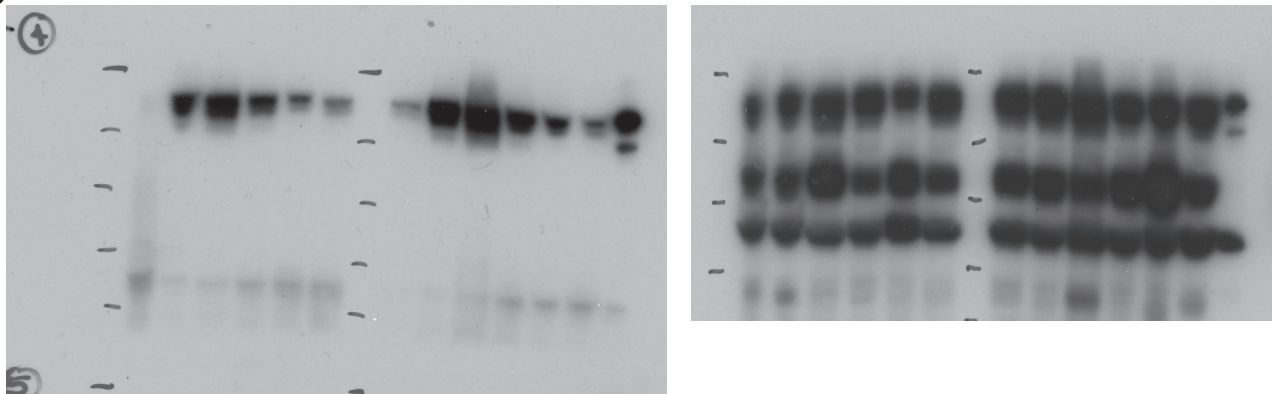
Source data: Figure 4

Uncropped gels for phospho-STAT3 (left panels) and total STAT3 / pan-actin (right panels) for calvarial samples from *Socs3^{ff}* and *Dmp1^{Cre}.Socs3^{ff}* mice treated with OSM (A), LIF (B) or IL-11 (C). Details of molecular weight markers and legends for the gels are in Figure 4.

A



B



C

